

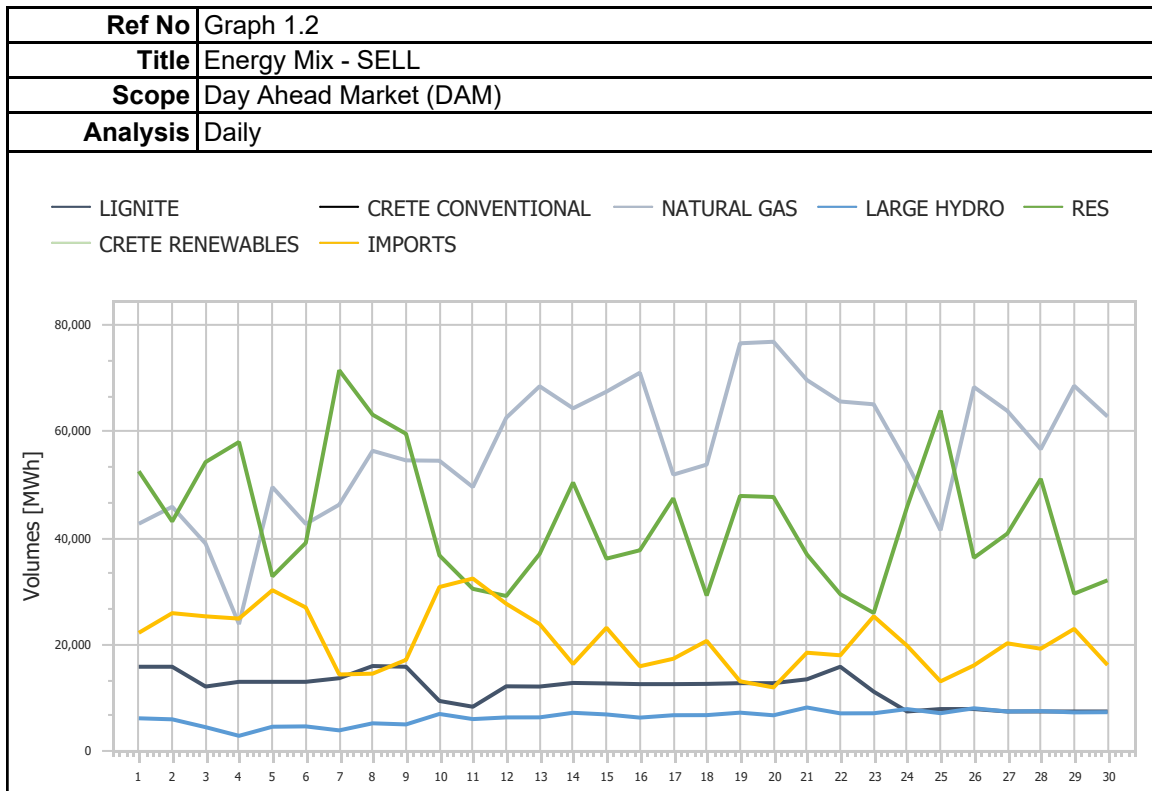
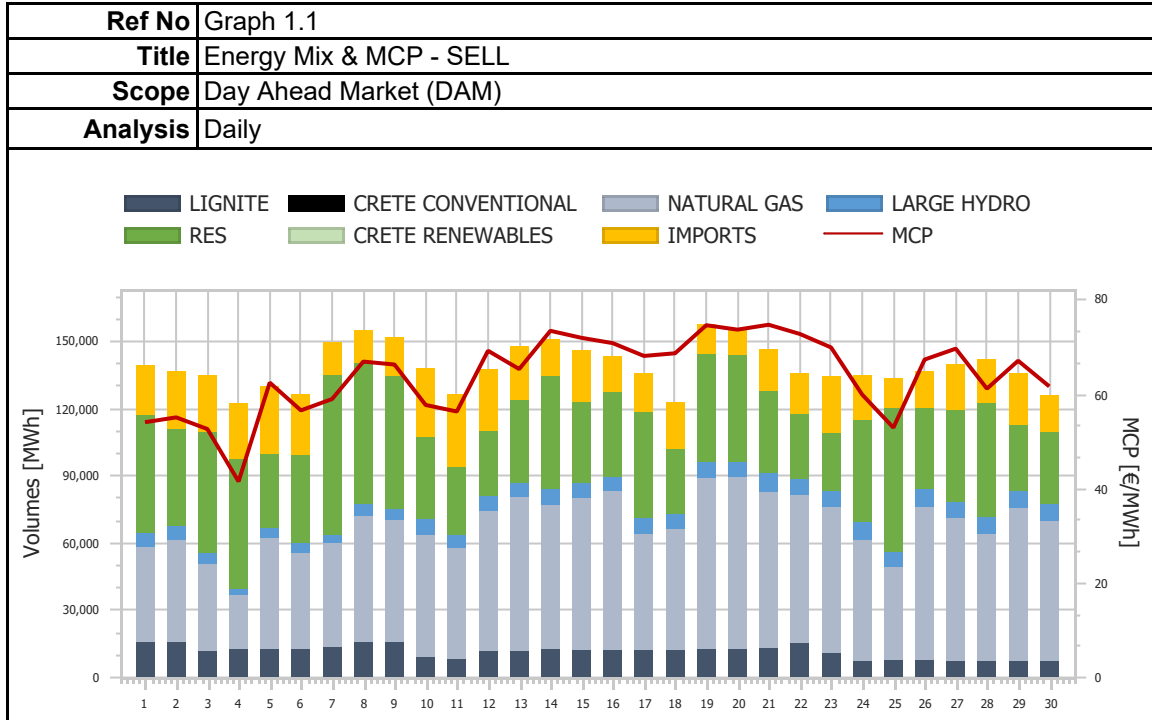
# Market Monitoring Report

Monthly - Public - 2

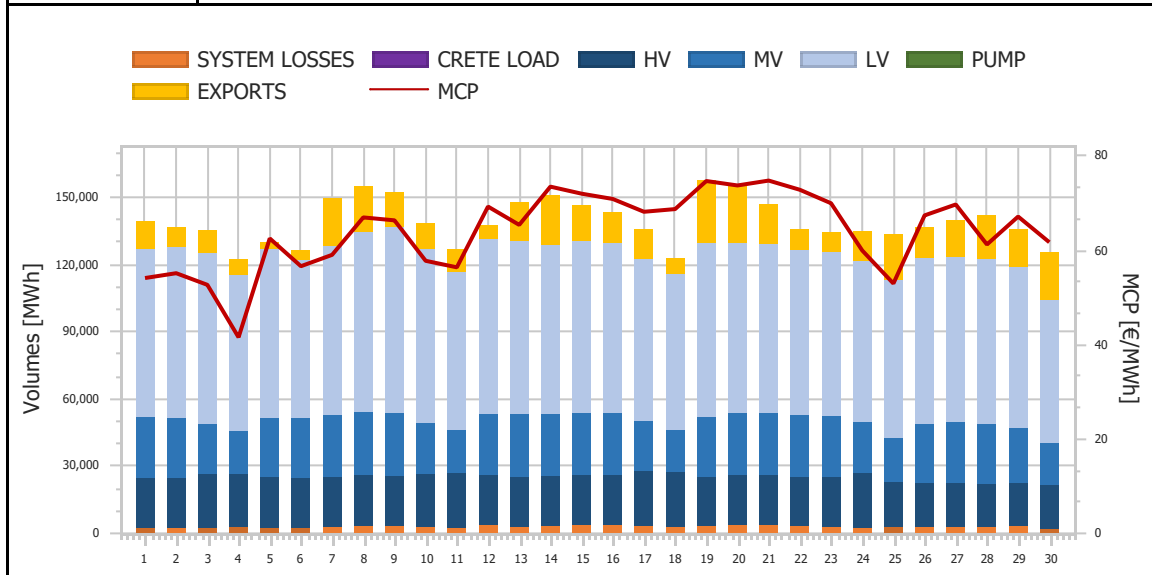
**04-2021**



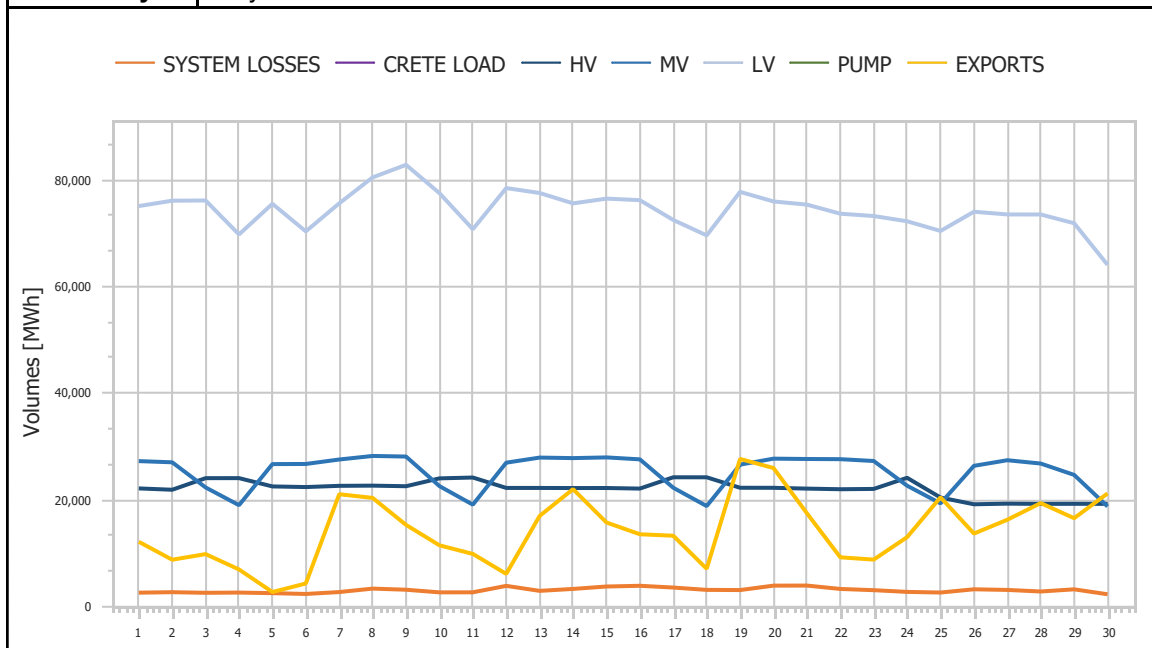
# 1. Day Ahead Market (DAM)



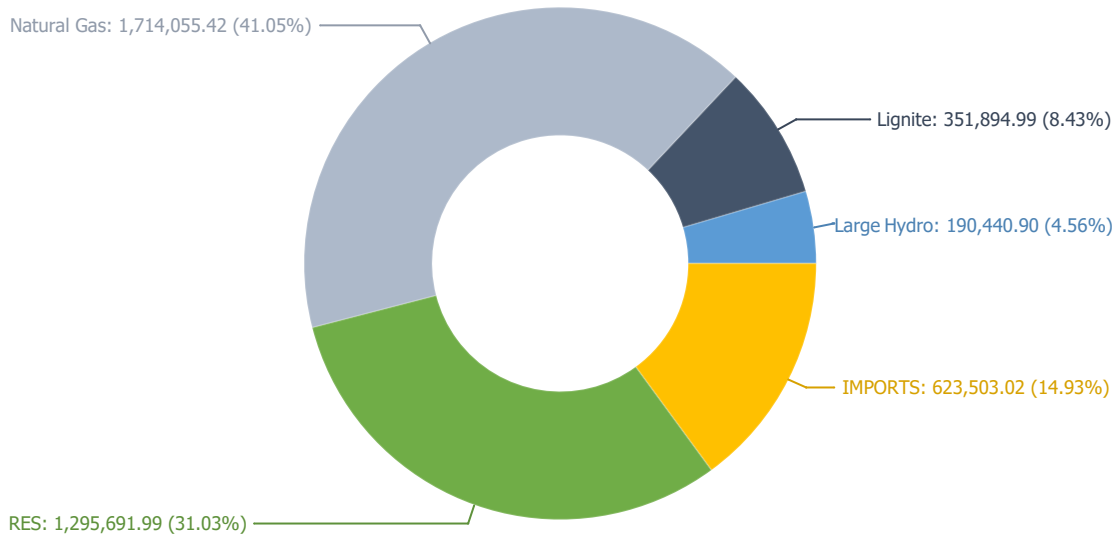
<b>Ref No</b>	Graph 1.3
<b>Title</b>	Energy Mix & MCP - BUY
<b>Scope</b>	Day Ahead Market (DAM)
<b>Analysis</b>	Daily



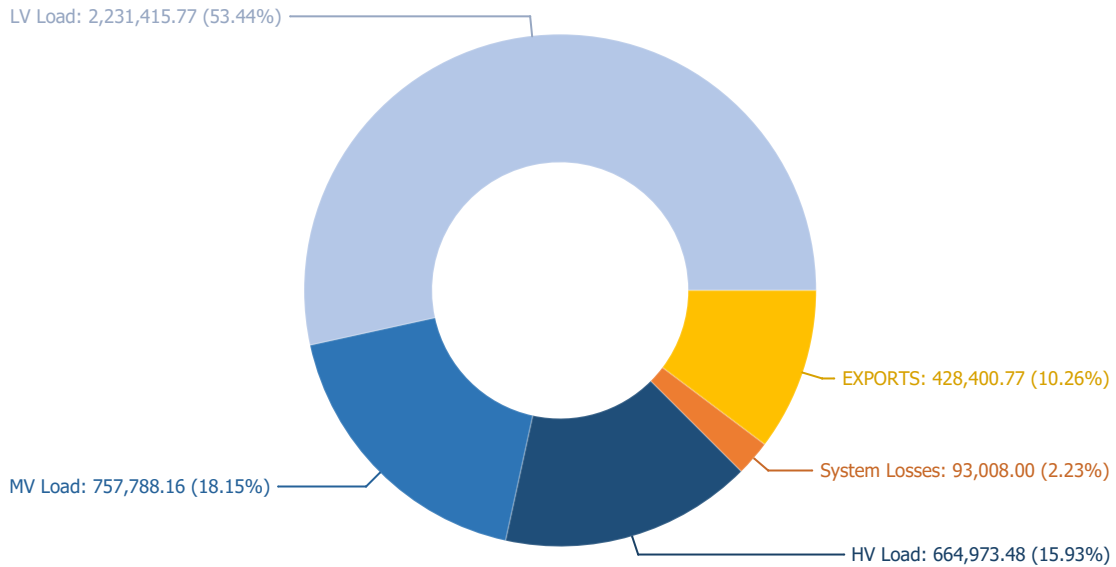
<b>Ref No</b>	Graph 1.4
<b>Title</b>	Energy Mix - BUY
<b>Scope</b>	Day Ahead Market (DAM)
<b>Analysis</b>	Daily



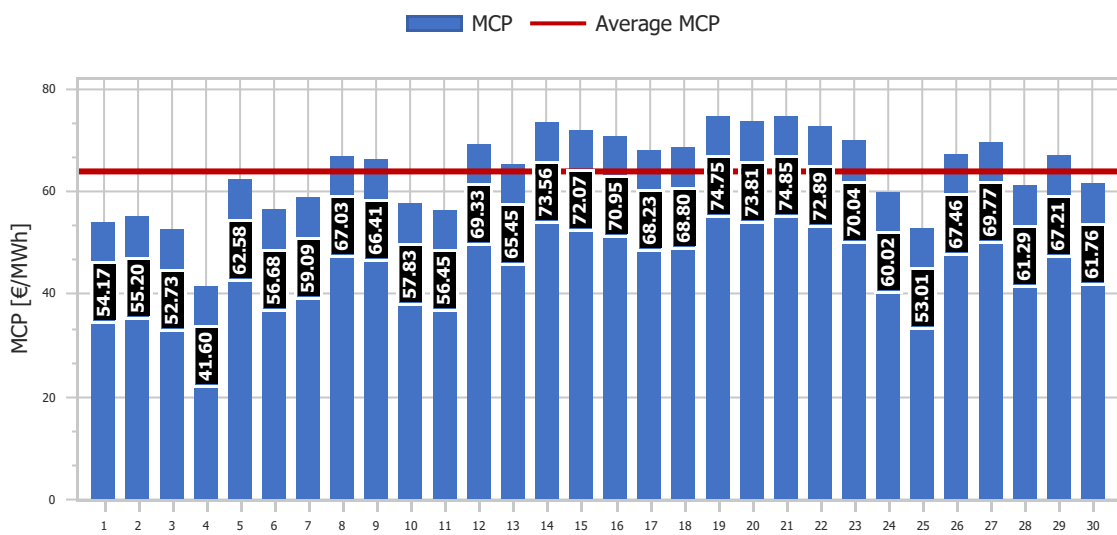
<b>Ref No</b>	Graph 1.5
<b>Title</b>	Energy Mix - SELL
<b>Scope</b>	Day Ahead Market (DAM)
<b>Analysis</b>	Daily



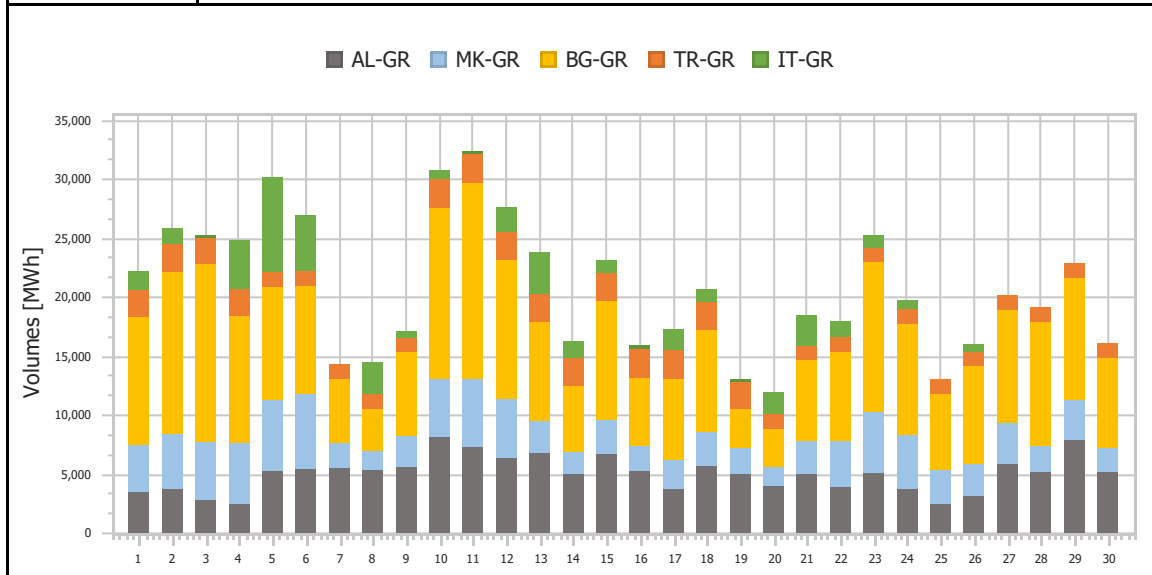
<b>Ref No</b>	Graph 1.6
<b>Title</b>	Energy Mix - BUY
<b>Scope</b>	Day Ahead Market (DAM)
<b>Analysis</b>	Daily



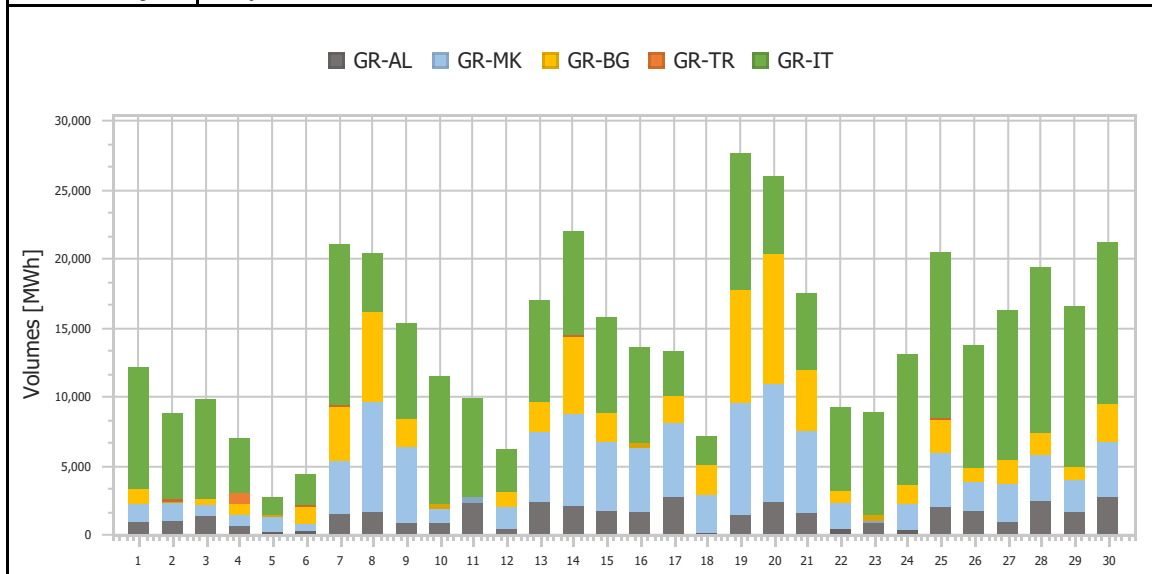
<b>Ref No</b>	Graph 1.7
<b>Title</b>	Market Clearing Price (MCP)
<b>Scope</b>	Day Ahead Market (DAM)
<b>Analysis</b>	Daily



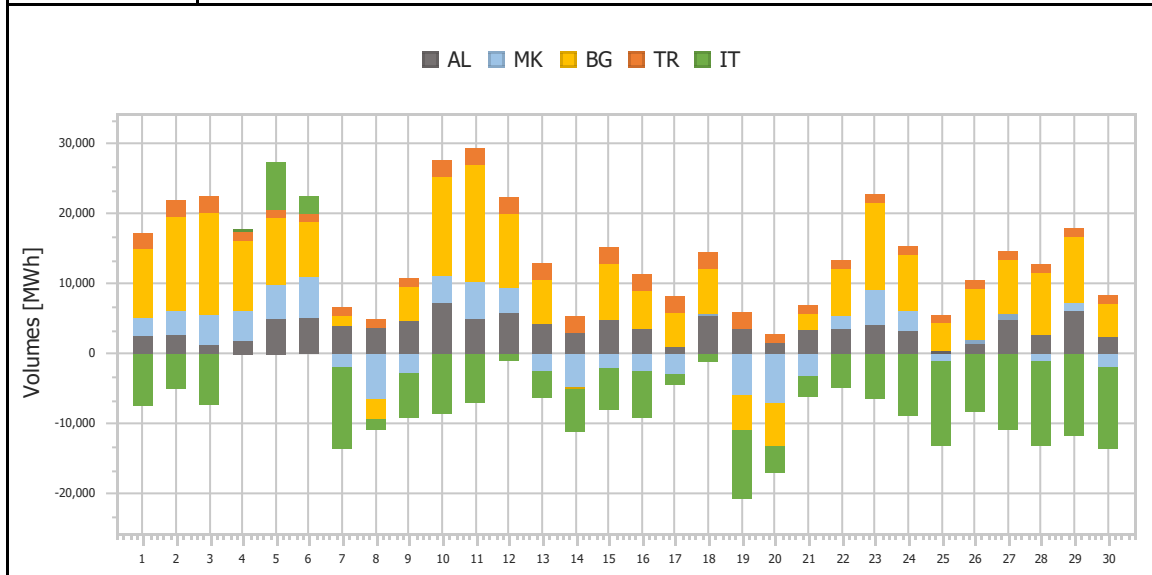
<b>Ref No</b>	Graph 1.8
<b>Title</b>	Imports per Border
<b>Scope</b>	Day Ahead Market (DAM)
<b>Analysis</b>	Daily



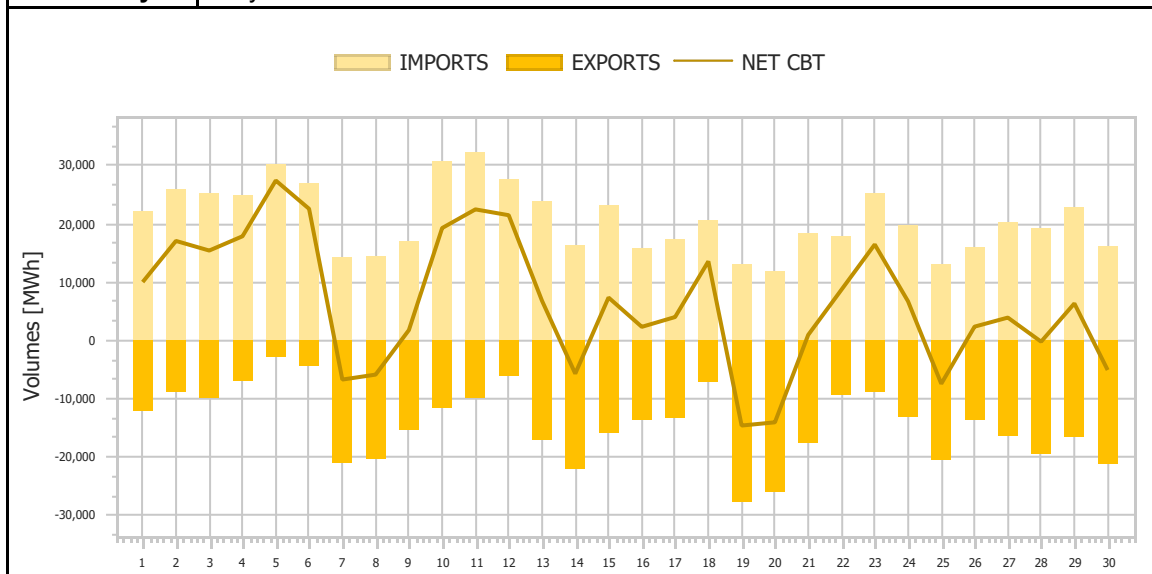
<b>Ref No</b>	Graph 1.9
<b>Title</b>	Exports per Border
<b>Scope</b>	Day Ahead Market (DAM)
<b>Analysis</b>	Daily



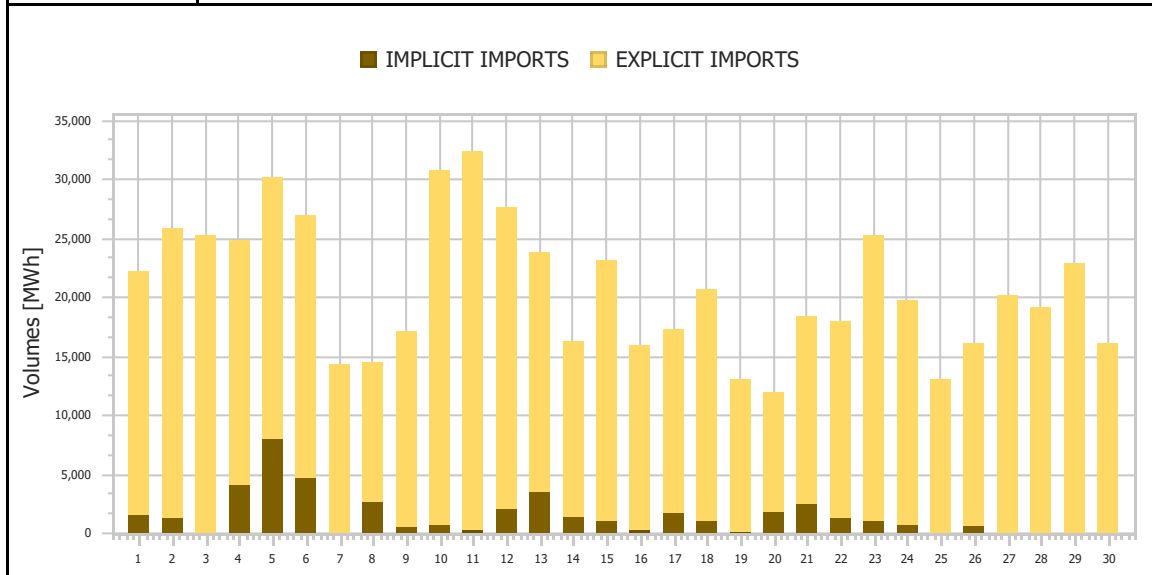
<b>Ref No</b>	Graph 1.10
<b>Title</b>	Net Imports per Border
<b>Scope</b>	Day Ahead Market (DAM)
<b>Analysis</b>	Daily



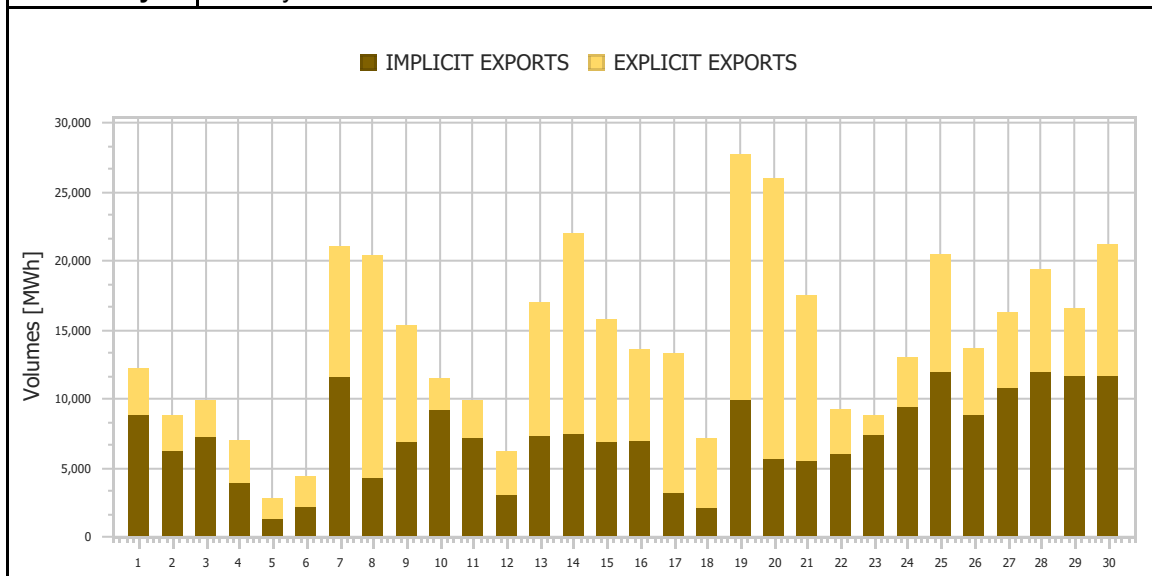
<b>Ref No</b>	Graph 1.11
<b>Title</b>	Total Imports & Exports
<b>Scope</b>	Day Ahead Market (DAM)
<b>Analysis</b>	Daily



<b>Ref No</b>	Graph 1.12
<b>Title</b>	Imports (Implicit/Explicit)
<b>Scope</b>	Day Ahead Market (DAM)
<b>Analysis</b>	Daily

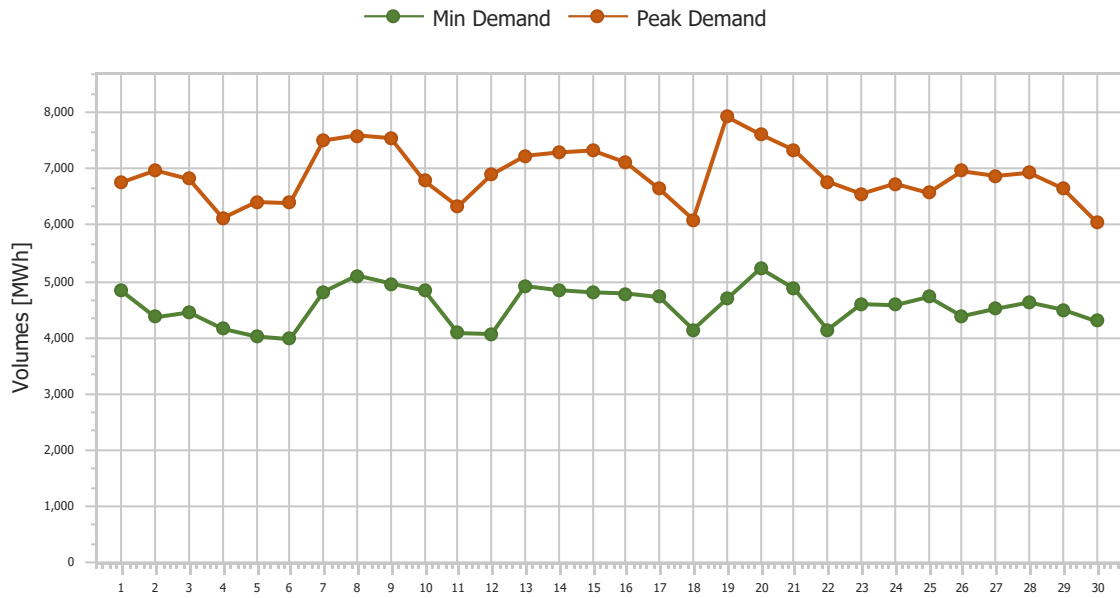


<b>Ref No</b>	Graph 1.13
<b>Title</b>	Exports (Implicit/Explicit)
<b>Scope</b>	Day Ahead Market (DAM)
<b>Analysis</b>	Monthly

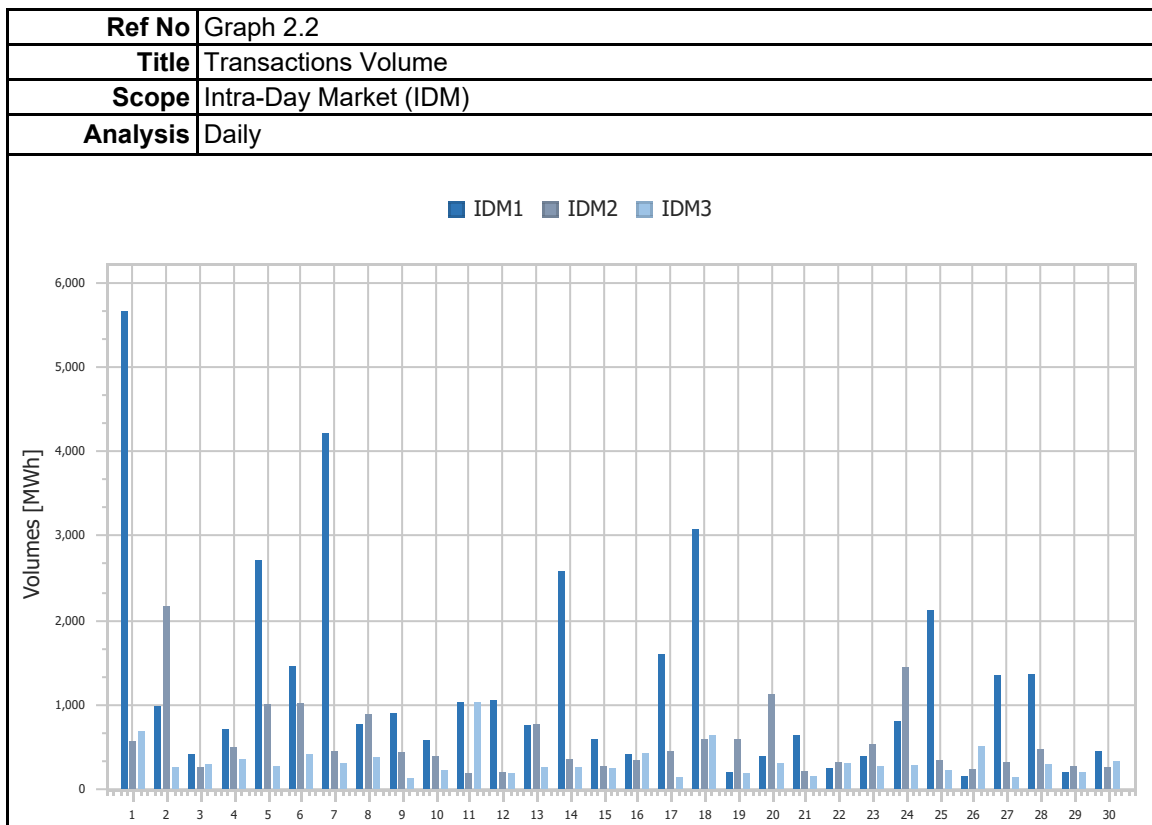
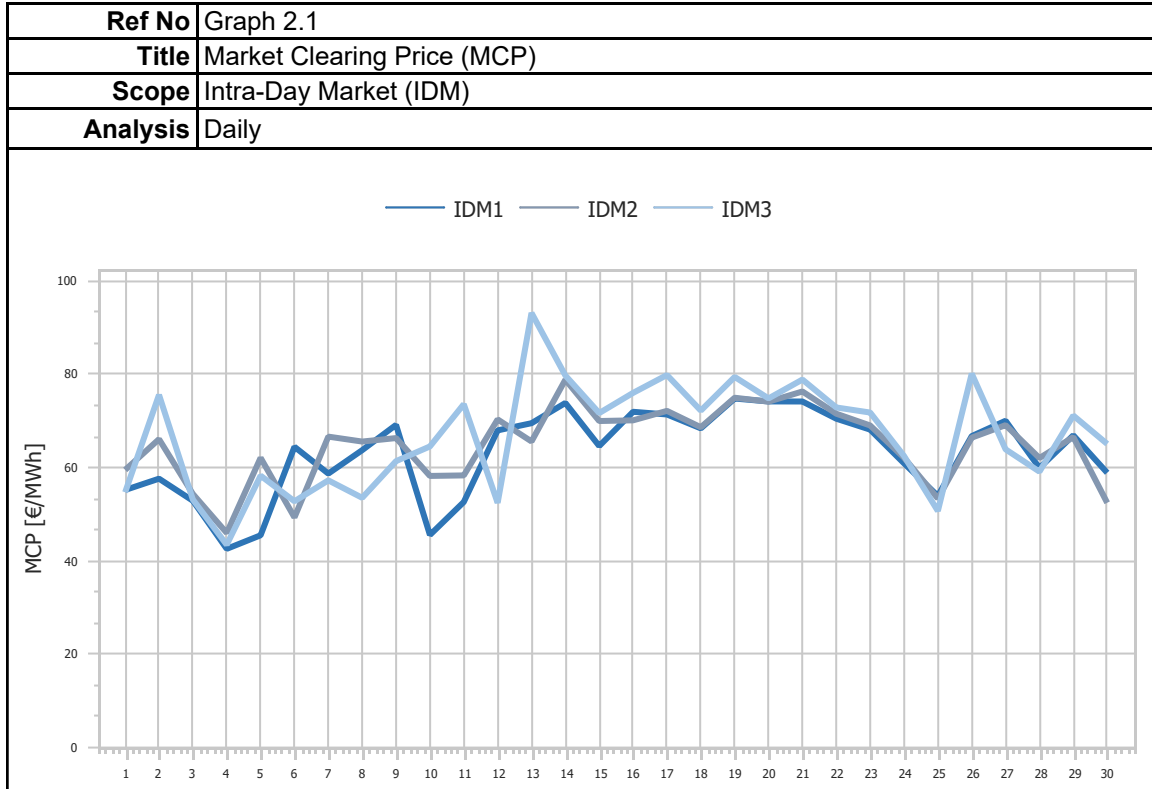


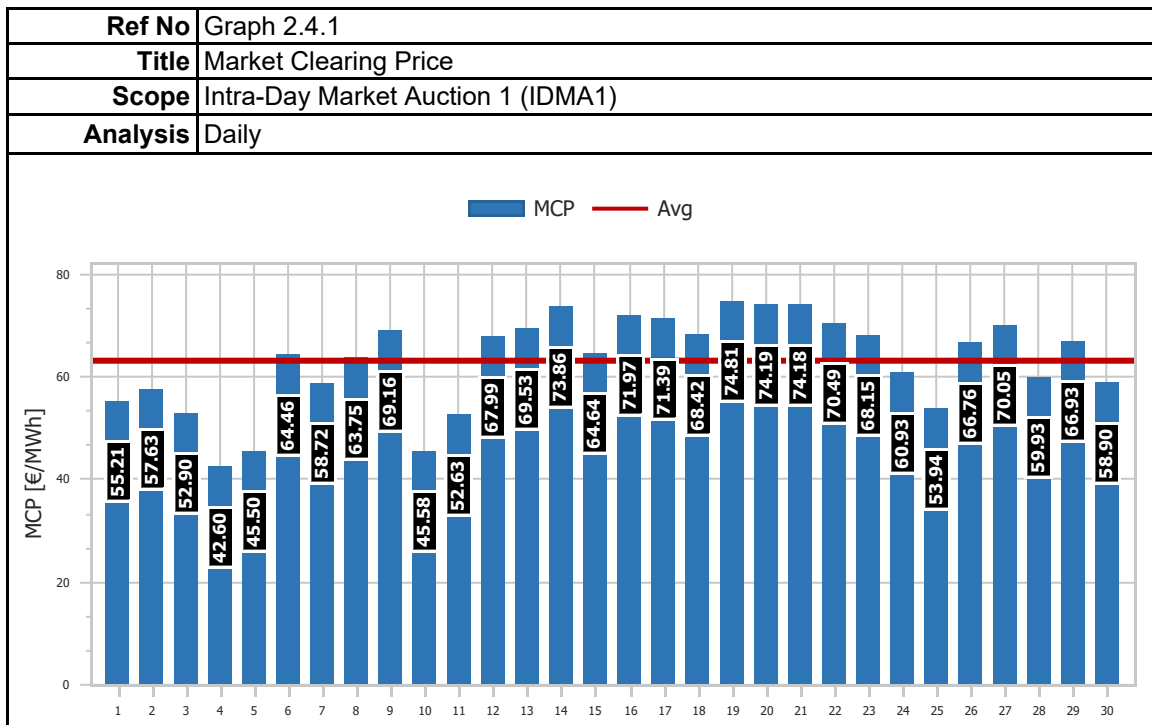
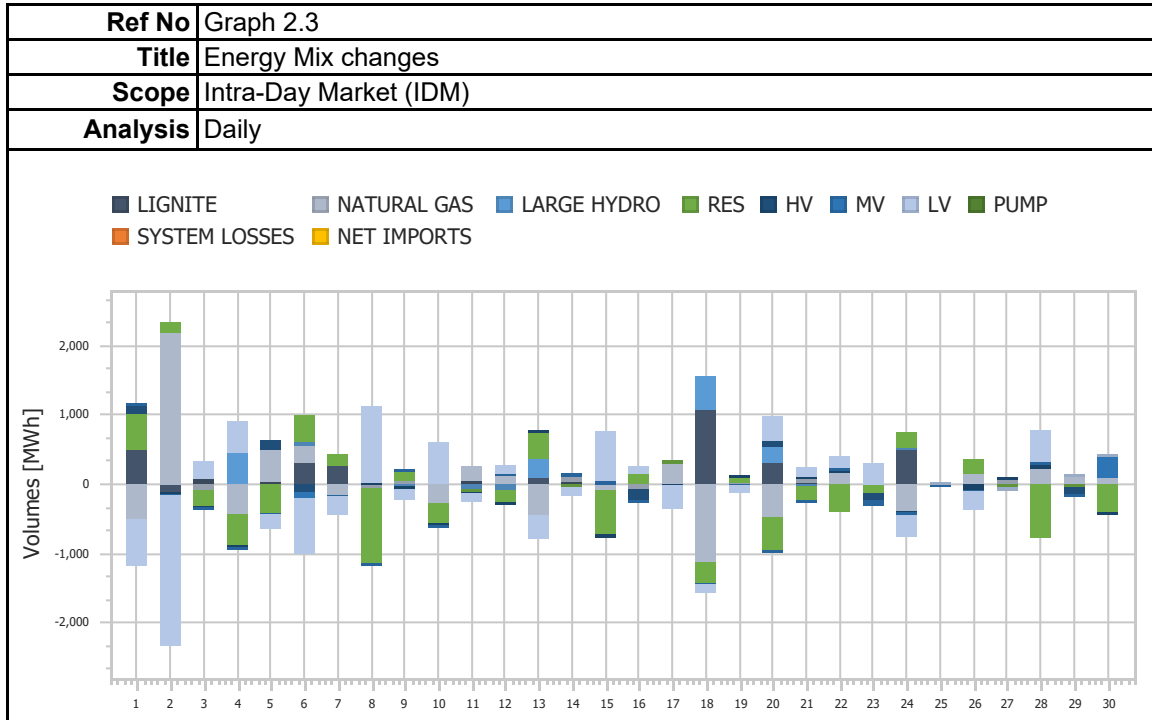


<b>Ref No</b>	Graph 1.14
<b>Title</b>	Min & Peak Demand
<b>Scope</b>	Day Ahead Market (DAM)
<b>Analysis</b>	Daily

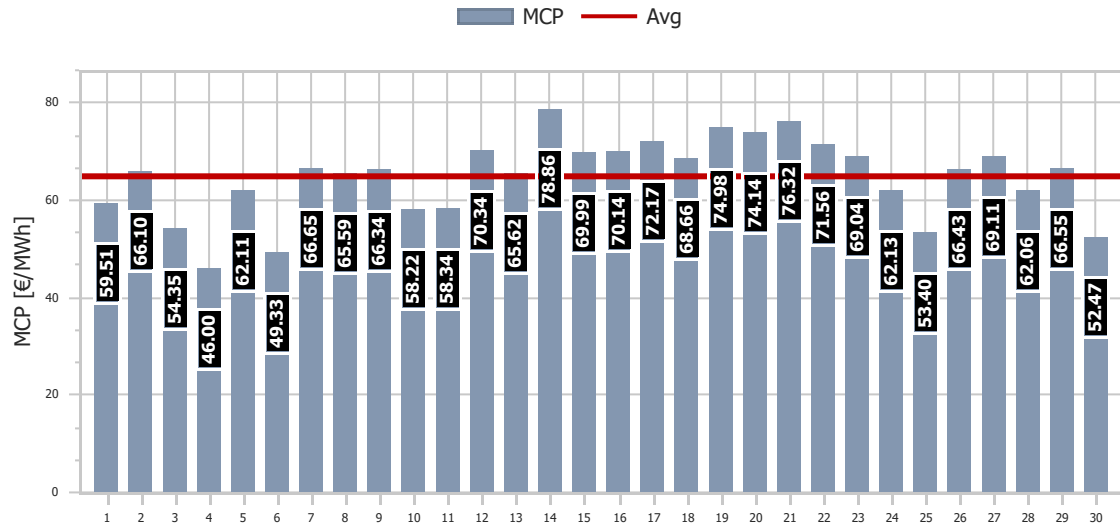


## 2. Intra-Day Market (IDM)

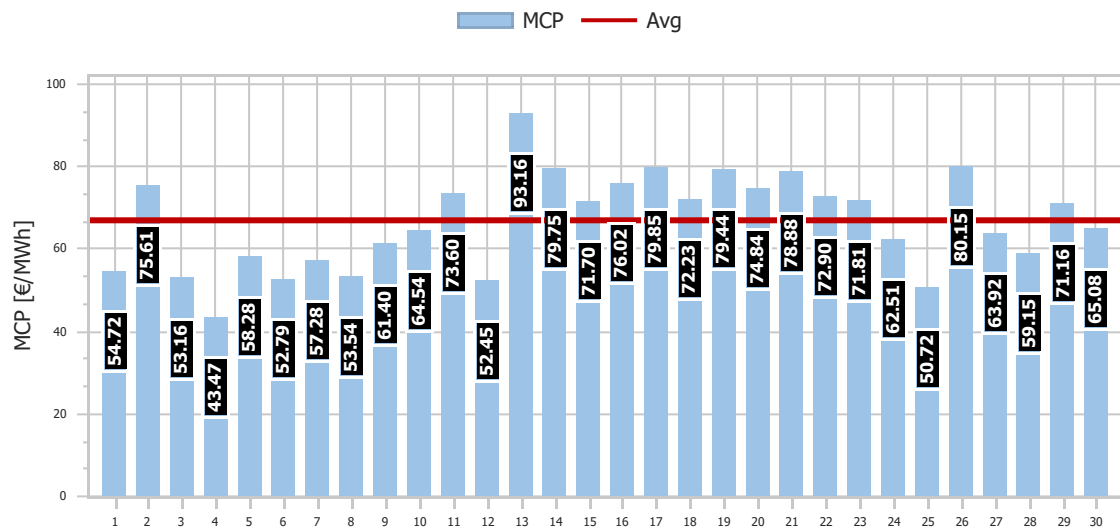




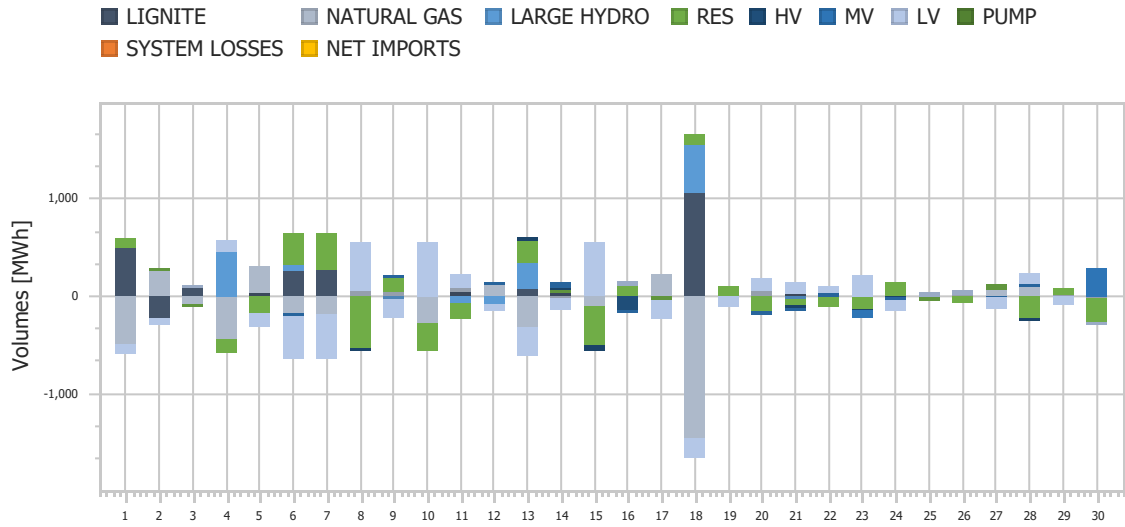
<b>Ref No</b>	Graph 2.4.2
<b>Title</b>	Market Clearing Price
<b>Scope</b>	Intra-Day Market Auction 2 (IDMA2)
<b>Analysis</b>	Daily



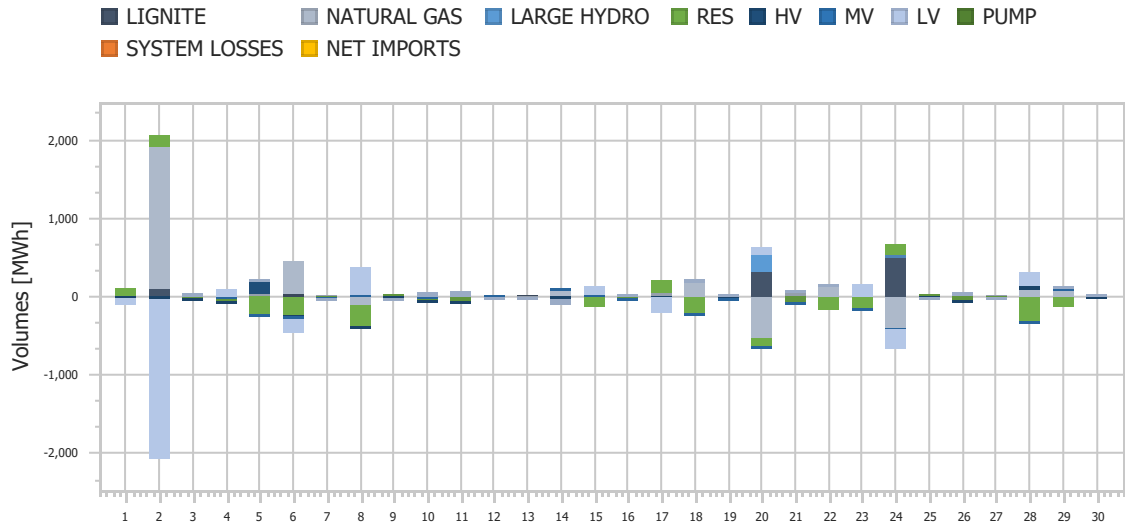
<b>Ref No</b>	Graph 2.4.3
<b>Title</b>	Market Clearing Price
<b>Scope</b>	Intra-Day Market Auction 3 (IDMA3)
<b>Analysis</b>	Daily

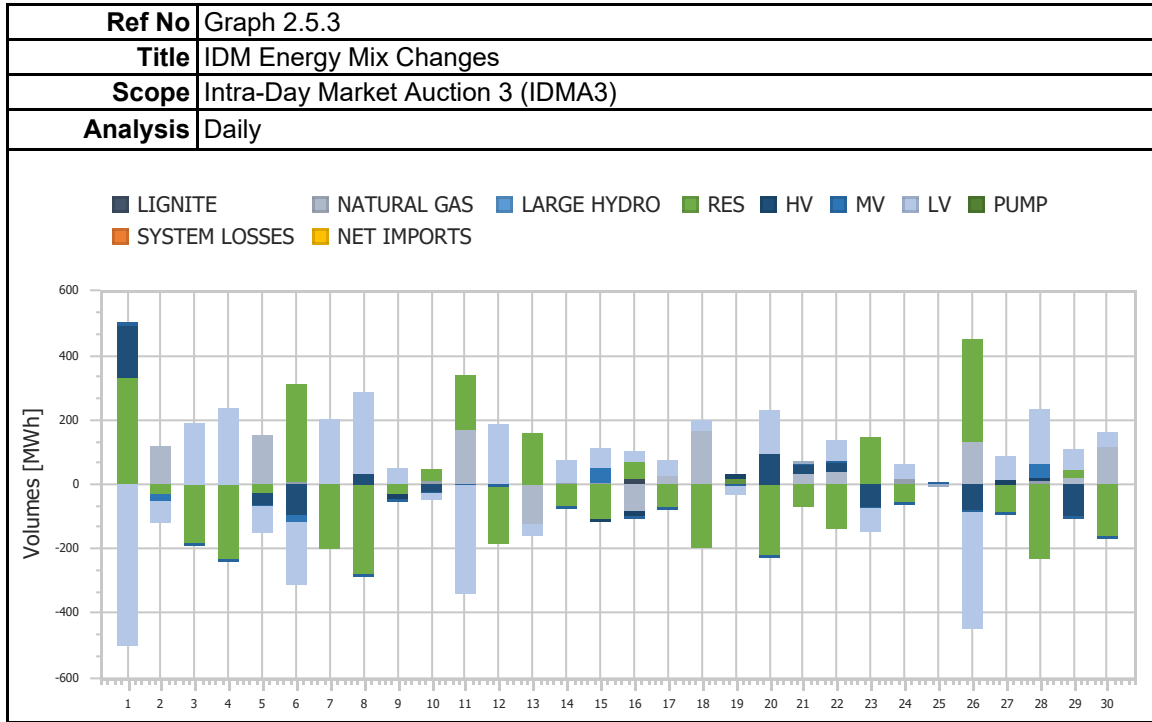


<b>Ref No</b>	Graph 2.5.1
<b>Title</b>	IDM Energy Mix Changes
<b>Scope</b>	Intra-Day Market Auction 1 (IDMA1)
<b>Analysis</b>	Daily

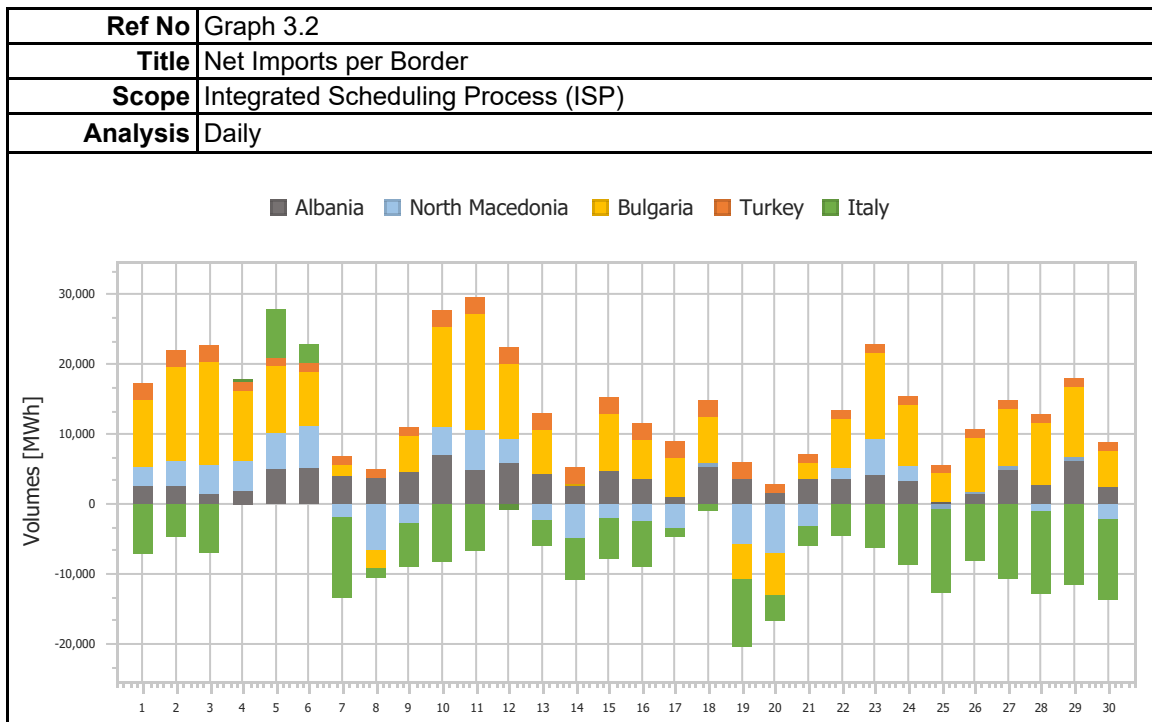
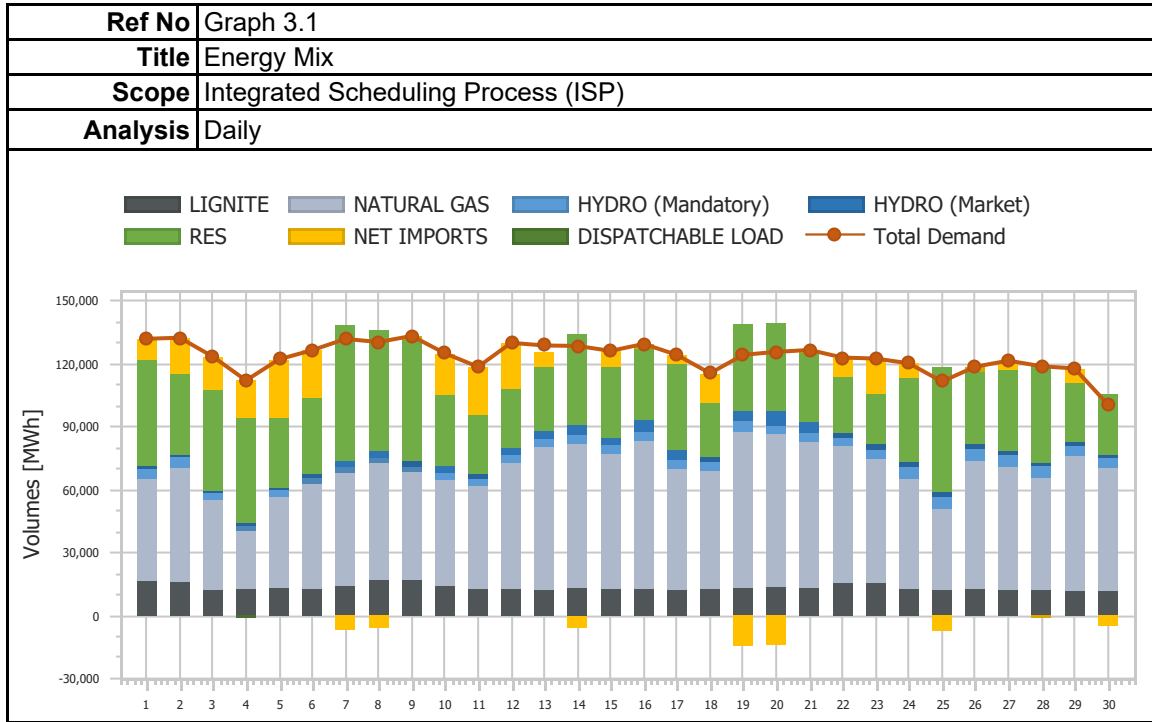


<b>Ref No</b>	Graph 2.5.2
<b>Title</b>	IDM Energy Mix Changes
<b>Scope</b>	Intra-Day Market Auction 2 (IDMA2)
<b>Analysis</b>	Daily

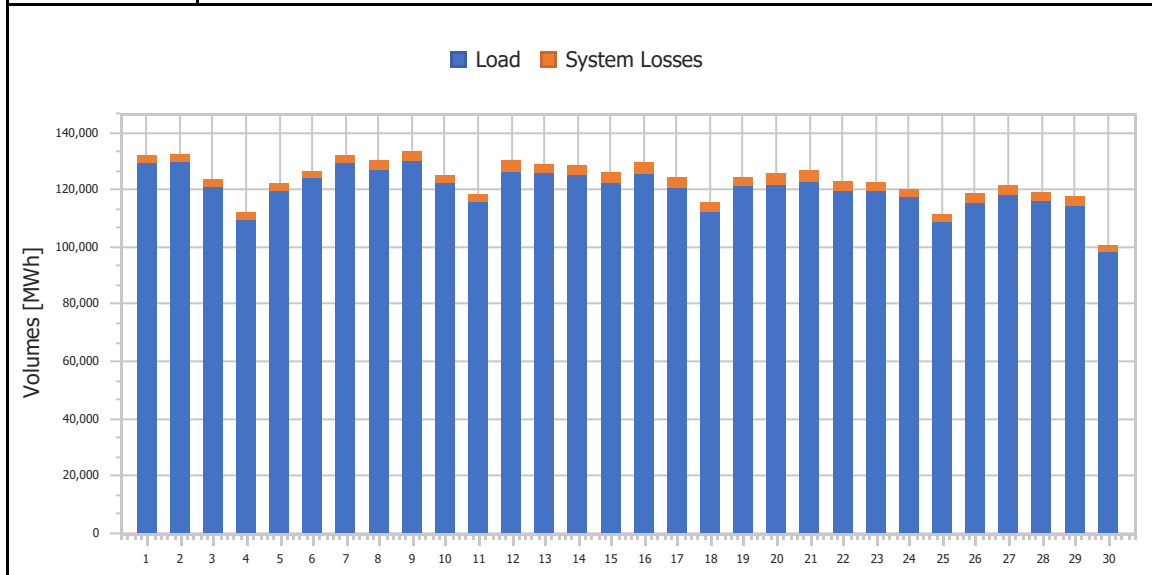




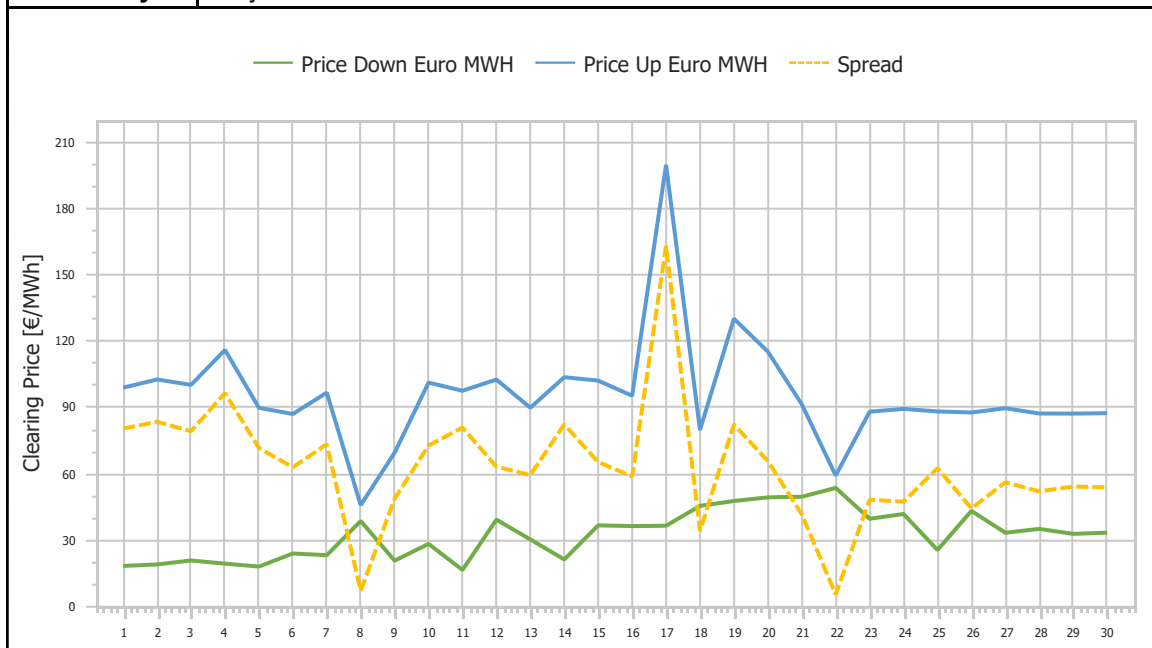
### 3. Integrated Scheduling Process (ISP)



<b>Ref No</b>	Graph 3.3
<b>Title</b>	Demand & System Losses
<b>Scope</b>	Integrated Scheduling Process (ISP)
<b>Analysis</b>	Daily

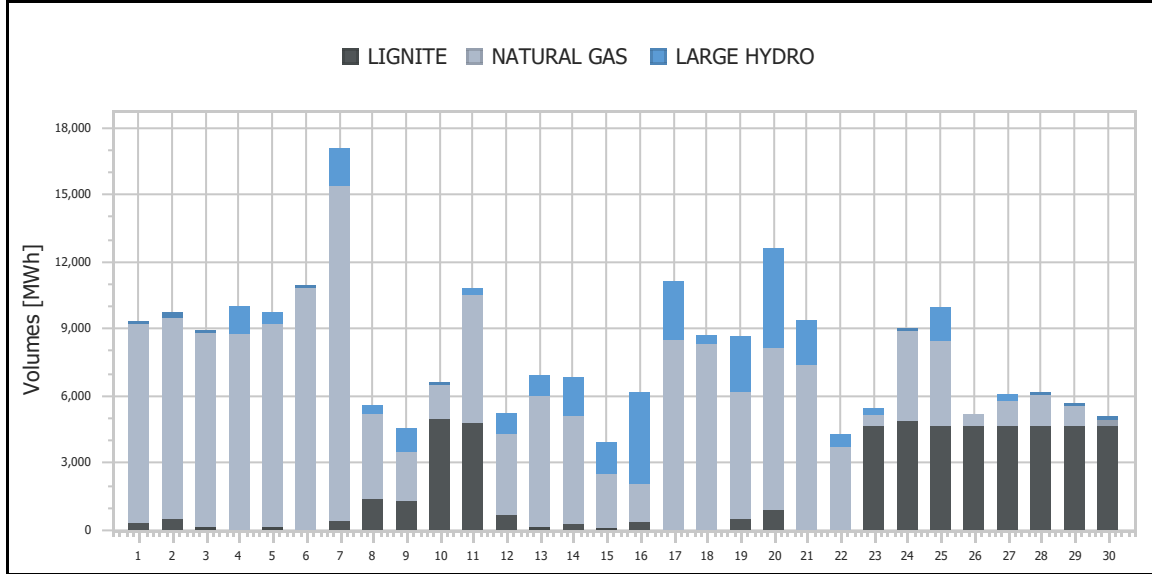


<b>Ref No</b>	Graph 3.4
<b>Title</b>	Clearing Prices
<b>Scope</b>	Integrated Scheduling Process (ISP)
<b>Analysis</b>	Daily

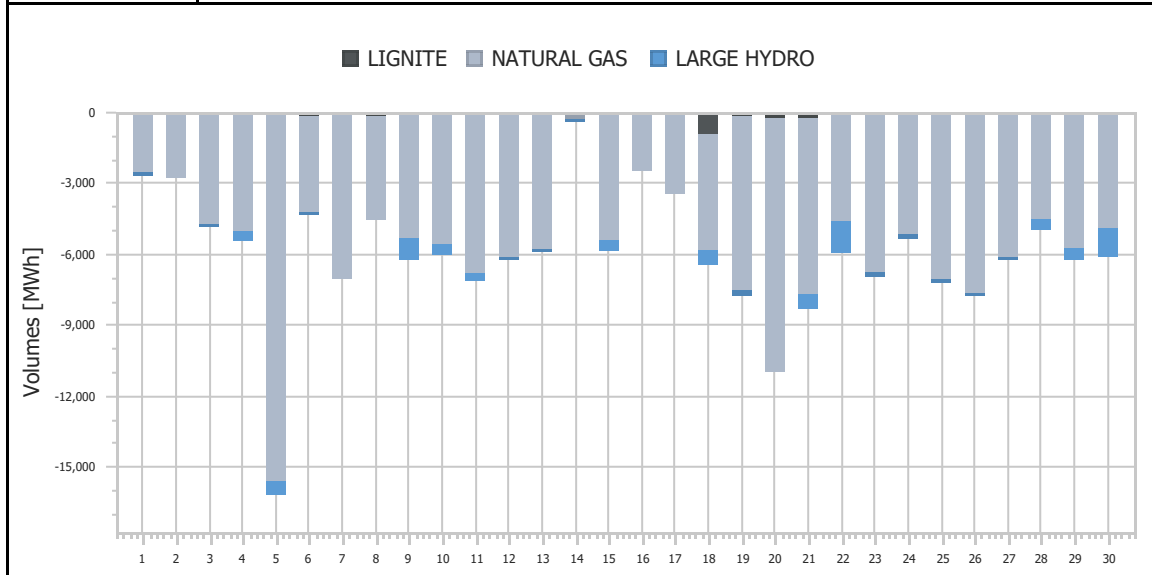




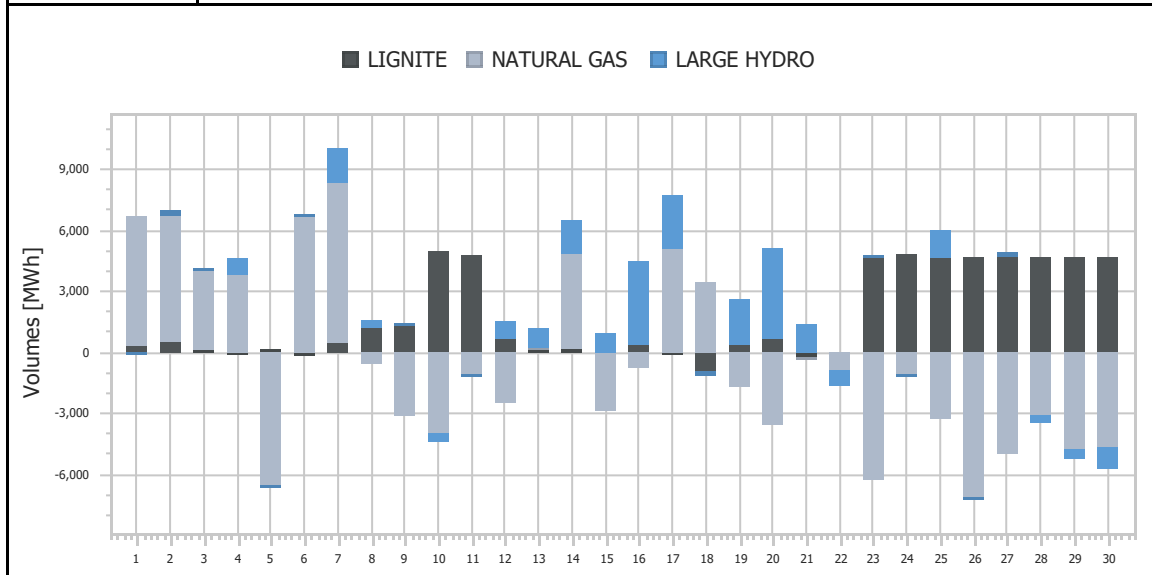
<b>Ref No</b>	Graph 3.5
<b>Title</b>	Upward Activated Balancing energy
<b>Scope</b>	Integrated Scheduling Process (ISP)
<b>Analysis</b>	Daily



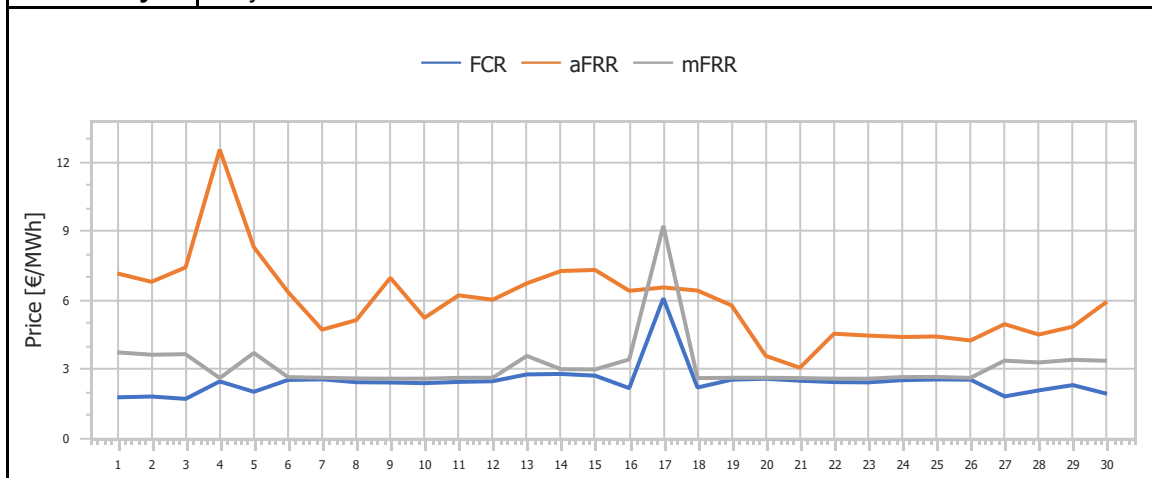
<b>Ref No</b>	Graph 3.6
<b>Title</b>	Downward Activated Balancing energy
<b>Scope</b>	Integrated Scheduling Process (ISP)
<b>Analysis</b>	Daily



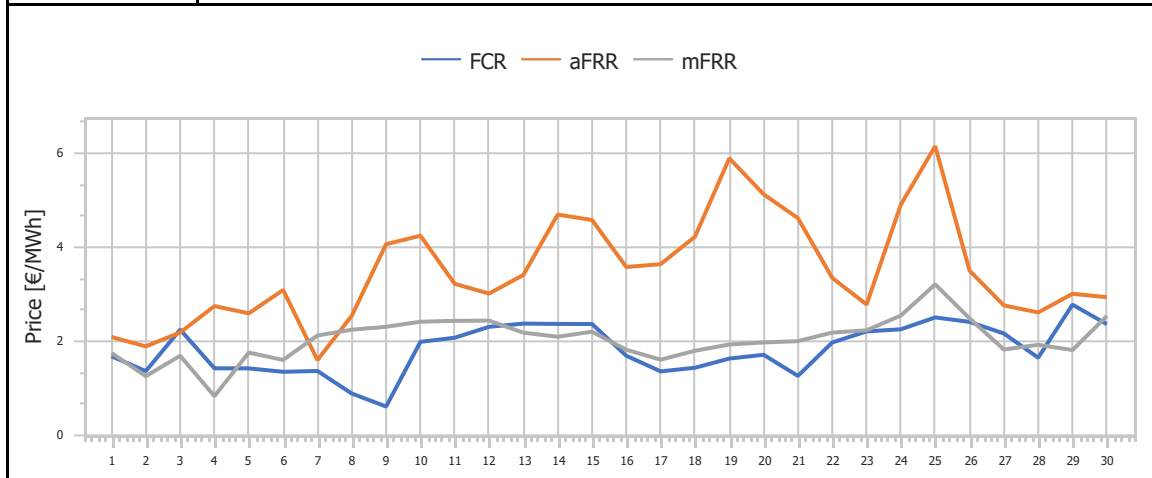
<b>Ref No</b>	Graph 3.7
<b>Title</b>	Net Activated Balancing energy
<b>Scope</b>	Integrated Scheduling Process (ISP)
<b>Analysis</b>	Daily



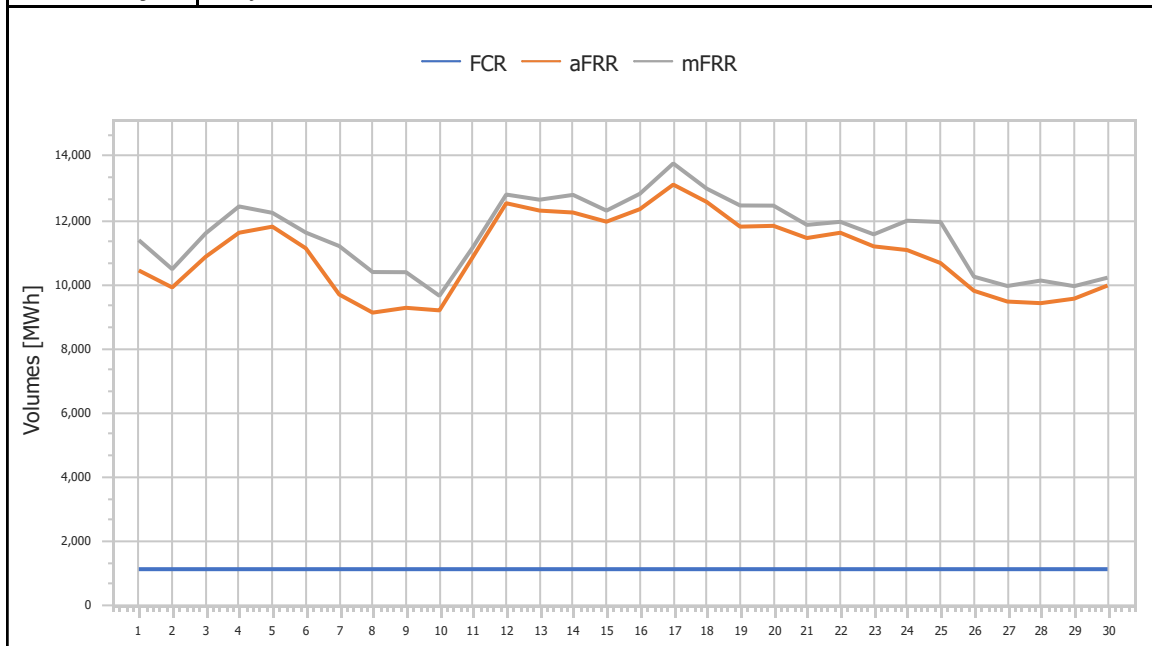
<b>Ref No</b>	Graph 3.8
<b>Title</b>	Upward Capacity Reserves Prices
<b>Scope</b>	Integrated Scheduling Process (ISP)
<b>Analysis</b>	Daily

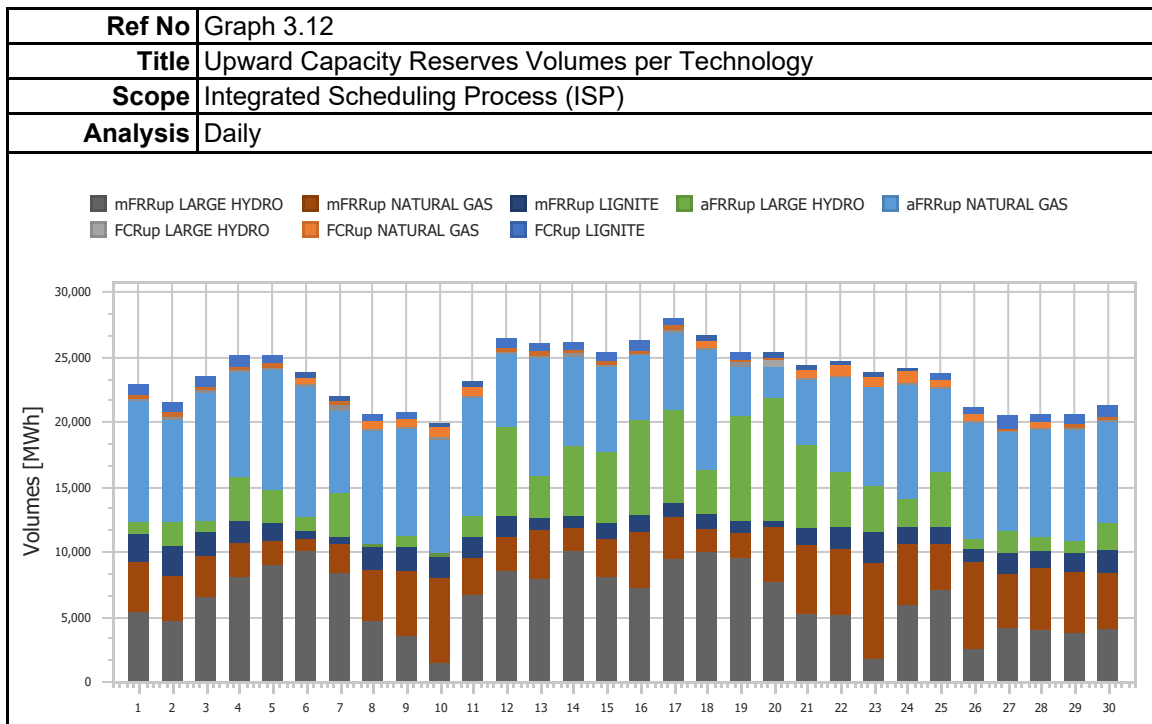
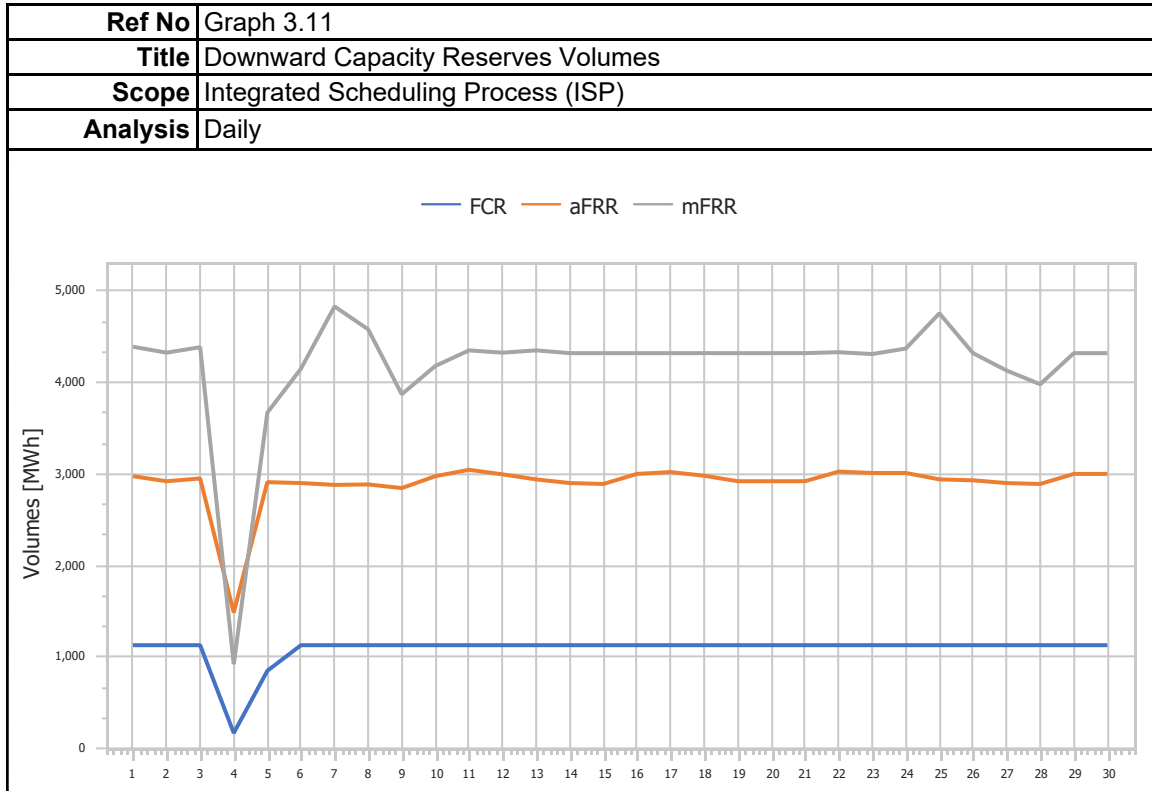


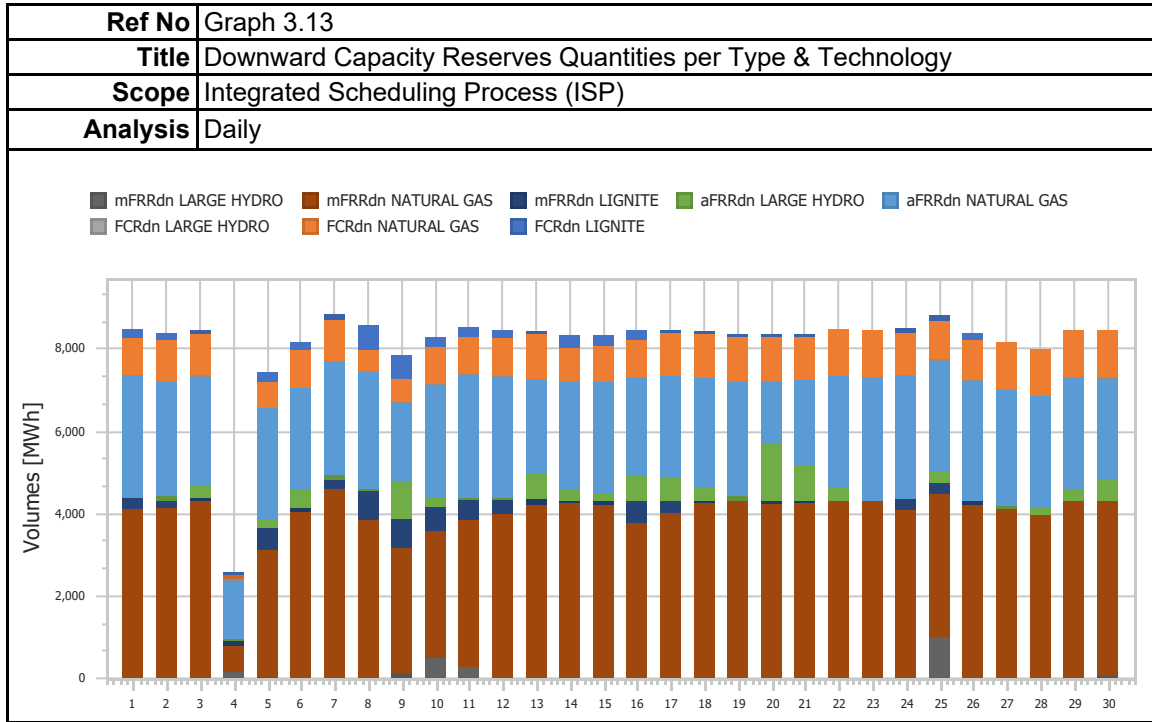
<b>Ref No</b>	Graph 3.9
<b>Title</b>	Downward Capacity Reserves Prices
<b>Scope</b>	Integrated Scheduling Process (ISP)
<b>Analysis</b>	Daily



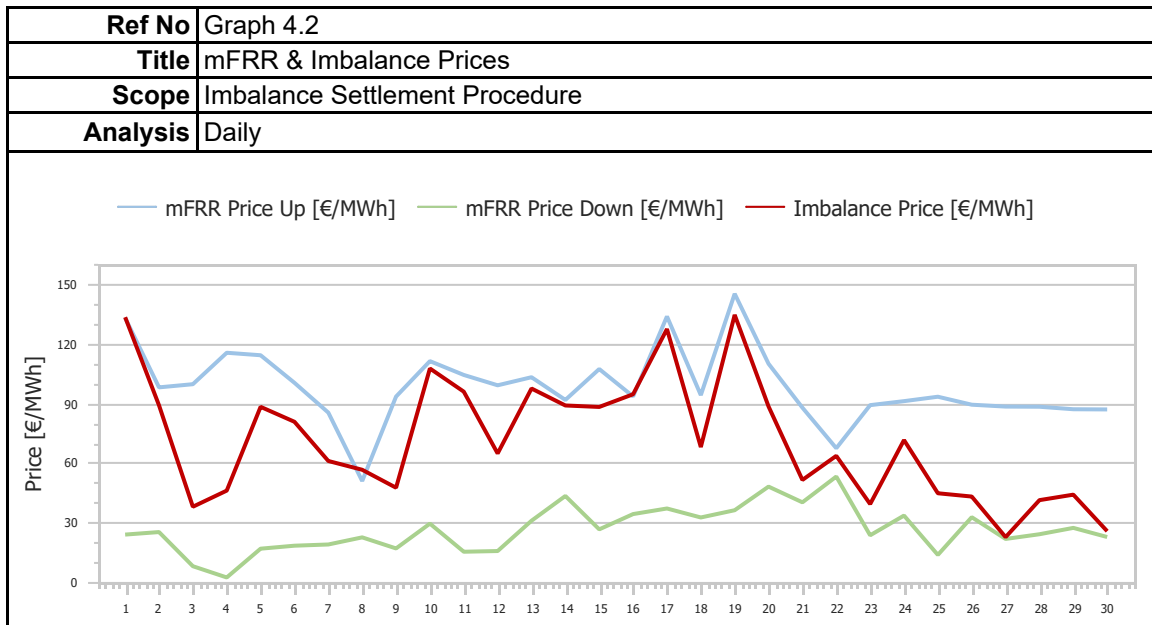
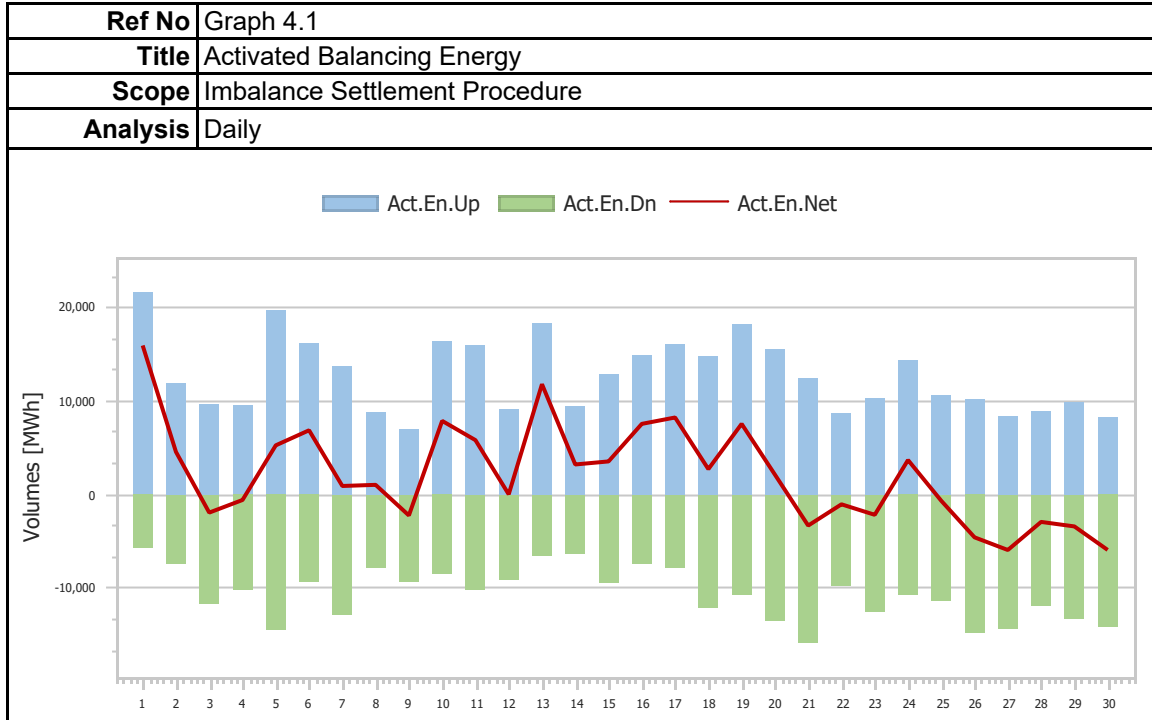
<b>Ref No</b>	Graph 3.10
<b>Title</b>	Upward Capacity Reserves Volumes
<b>Scope</b>	Integrated Scheduling Process (ISP)
<b>Analysis</b>	Daily



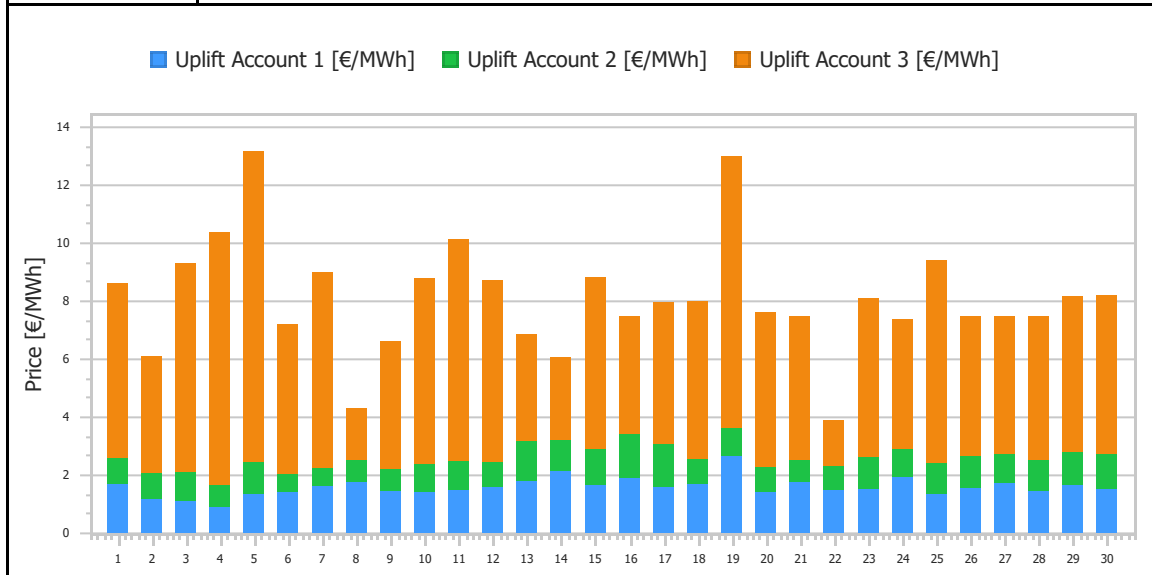




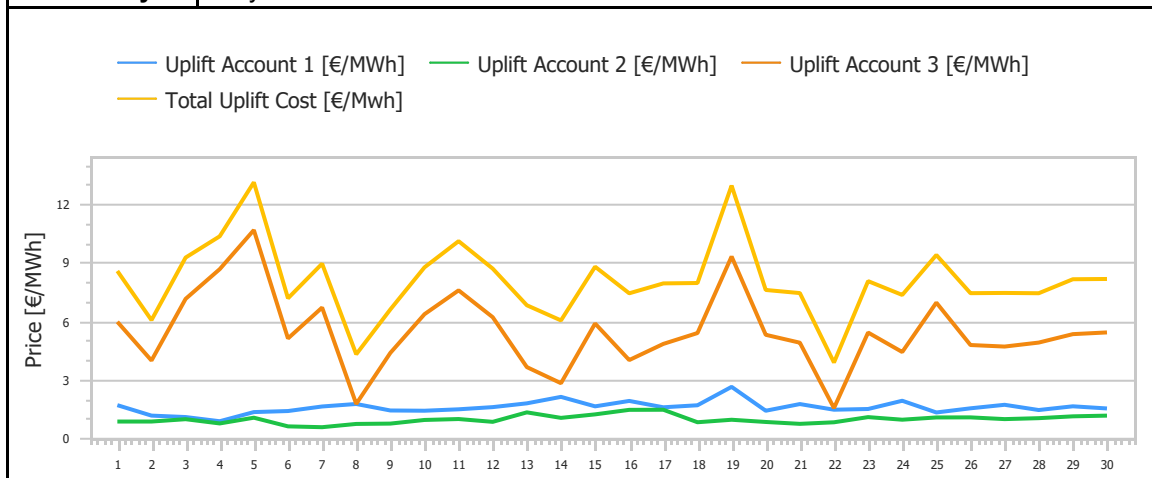
### 4. Imbalance Settlement Procedure



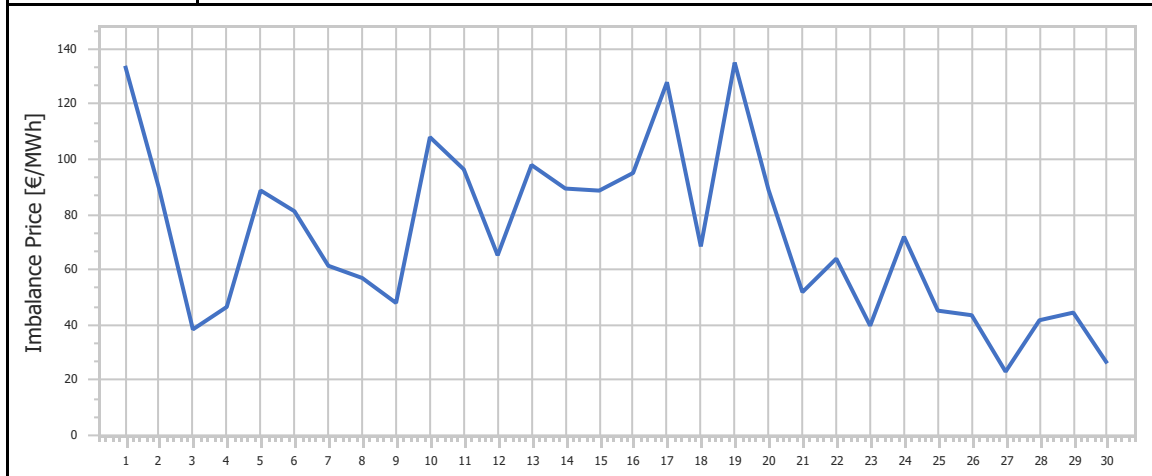
<b>Ref No</b>	Graph 4.3
<b>Title</b>	Uplift Accounts Cost
<b>Scope</b>	Imbalance Settlement Procedure
<b>Analysis</b>	Daily



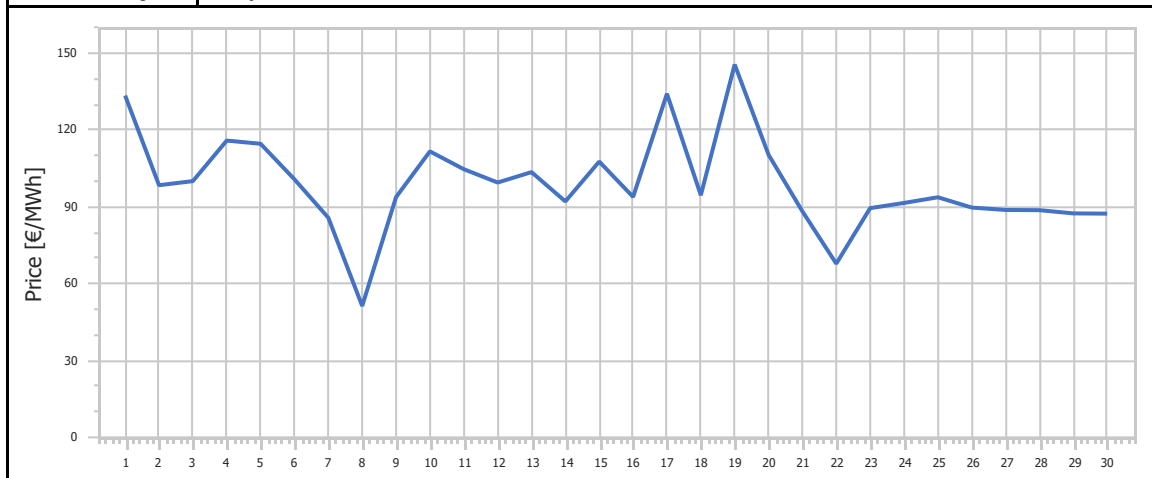
<b>Ref No</b>	Graph 4.4
<b>Title</b>	Uplift Accounts Cost
<b>Scope</b>	Imbalance Settlement Procedure
<b>Analysis</b>	Daily



<b>Ref No</b>	Graph 4.5
<b>Title</b>	Imbalance Price
<b>Scope</b>	Imbalance Settlement Procedure
<b>Analysis</b>	Daily

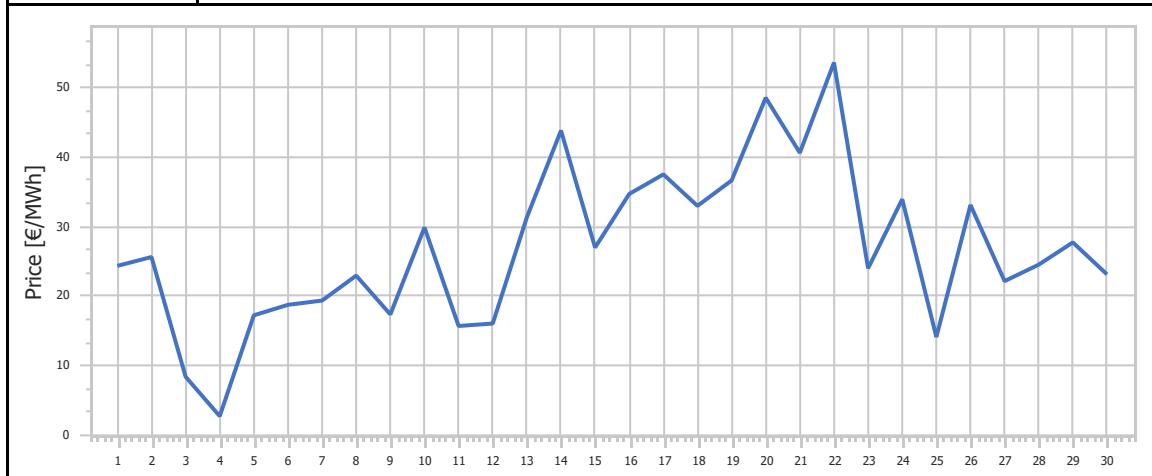


<b>Ref No</b>	Graph 4.6
<b>Title</b>	mFRR Up Price
<b>Scope</b>	Imbalance Settlement Procedure
<b>Analysis</b>	Daily

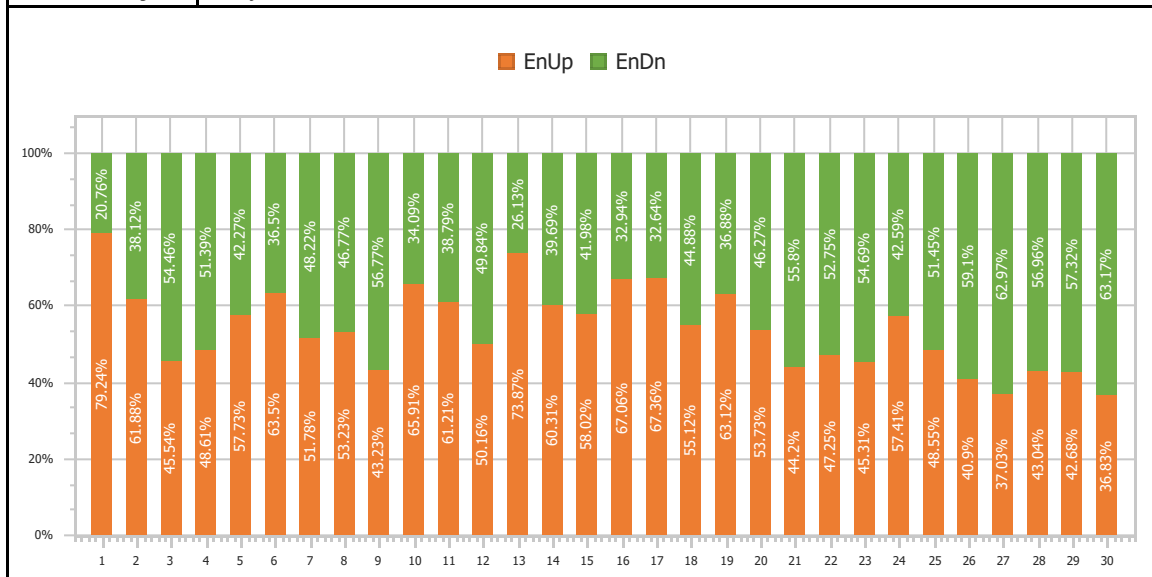




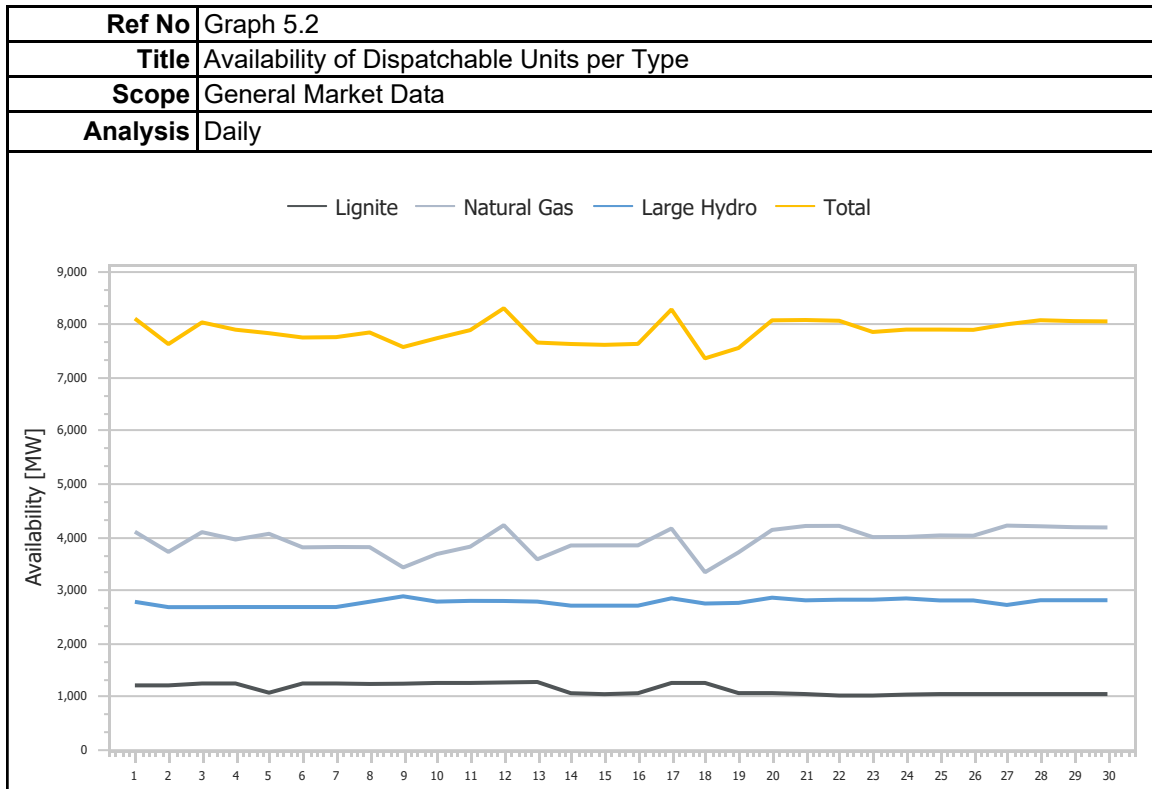
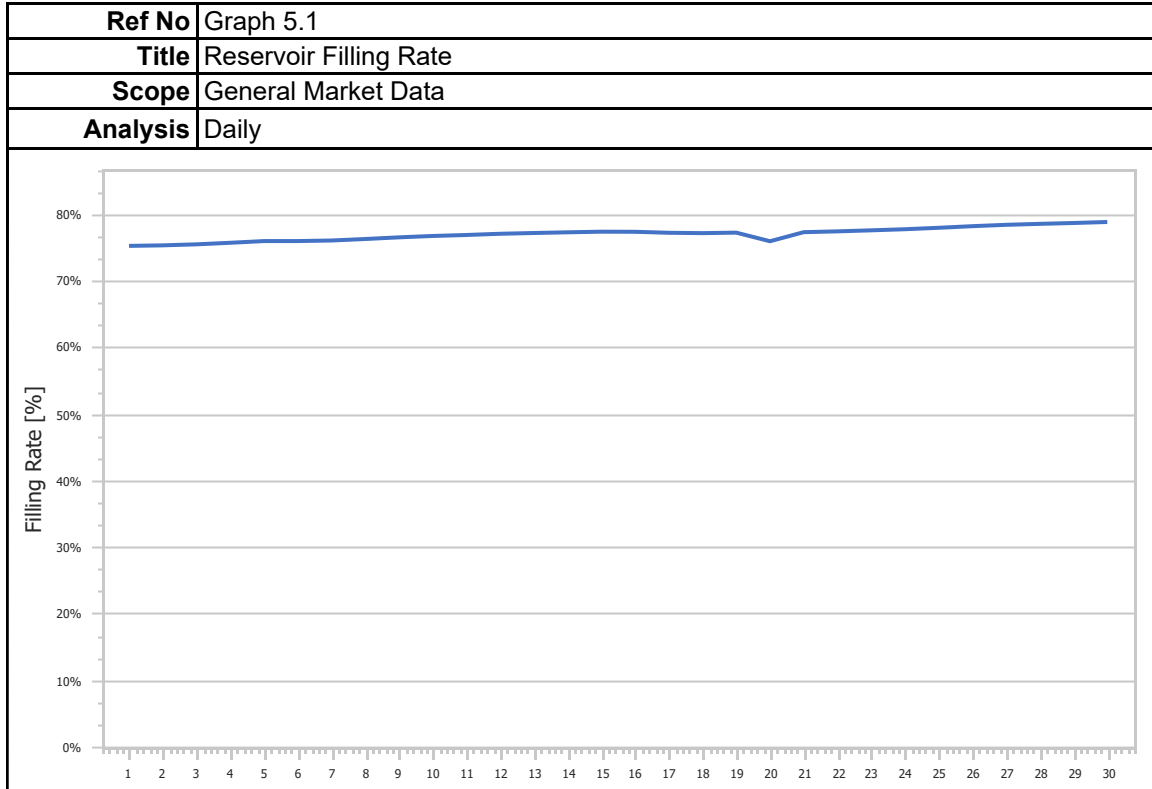
<b>Ref No</b>	Graph 4.7
<b>Title</b>	mFRR Down Price
<b>Scope</b>	Imbalance Settlement Procedure
<b>Analysis</b>	Daily



<b>Ref No</b>	Graph 4.8
<b>Title</b>	Balancing Energy Activation Direction
<b>Scope</b>	Imbalance Settlement Procedure
<b>Analysis</b>	Daily



### 5. General Market Data



## 1. Statistics

<b>Ref No</b>	Table 1.1			
<b>Title</b>	Market Shares per Aggregated Classification - SELL			
<b>Scope</b>	Day Ahead Market (DAM)			
<b>Analysis</b>	Monthly			
Classification	Quantity [MWh]	Share [%]	Value [EUR]	Share [%]
Lignite	351,894.986	8.43%	22,683,489.92€	8.37%
Crete Conventional	-	0.00%	- €	0.00%
Natural Gas	1,714,055.418	41.05%	114,820,582.98€	42.36%
Large Hydro	190,440.896	4.56%	13,813,018.18€	5.10%
RES	1,295,691.985	31.03%	80,086,012.62€	29.54%
Crete Renewables	-	0.00%	- €	0.00%
Imports	623,503.020	14.93%	39,664,946.04€	14.63%
<b>Total</b>	<b>4,175,586.307</b>	<b>100.00%</b>	<b>271,068,049.74€</b>	<b>100.00%</b>

<b>Ref No</b>	Table 1.2						
<b>Title</b>	Statistics per Aggregated Classification - SELL						
<b>Scope</b>	Day Ahead Market (DAM)						
<b>Analysis</b>	Monthly						
	MCP [€/MWh]	Total [MWh]	Lignite [MWh]	Natural Gas [MWh]	Hydro [MWh]	RES [MWh]	Imports [MWh]
<b>Total</b>	-	4,175,586.31	351,894.99	1,714,055.42	190,440.90	1,295,691.98	623,503.02
<b>Average</b>	64.17	139,186.21	11,729.83	57,135.18	6,348.03	43,189.73	20,783.43
<b>Min</b>	41.60	122,544.55	7,416.00	23,826.25	2,841.00	25,919.68	11,932.58
<b>Min day</b>	4	4	24	4	4	23	20
<b>Max</b>	74.85	157,471.90	15,951.00	76,856.81	8,165.24	71,509.39	32,383.38
<b>Max day</b>	21	19	8	20	21	7	11
<b>Spread</b>	33.25	34,927.34	8,535.00	53,030.56	5,324.24	45,589.70	20,450.79
<b>Standard Deviation</b>	8.00	9,589.89	2,845.91	12,157.37	1,268.36	11,895.12	5,540.00

<b>Ref No</b>	Table 1.3
<b>Title</b>	Market Shares per Aggregated Classification - BUY
<b>Scope</b>	Day Ahead Market (DAM)
<b>Analysis</b>	Monthly

Classification	Quantity [MWh]	Share [%]	Value [EUR]	Share [%]
System Losses	93,008.000	2.23%	6,098,501.59€	2.25%
Crete Load	-	0.00%	- €	0.00%
HV Load	664,973.479	15.93%	42,573,576.48€	15.71%
MV Load	757,788.157	18.15%	49,381,593.75€	18.22%
LV Load	2,231,415.767	53.44%	145,429,825.41€	53.65%
PUMP	-	0.00%	- €	0.00%
Exports	428,400.770	10.26%	27,584,532.92€	10.18%
<b>Total</b>	<b>4,175,586.172</b>	<b>100.00%</b>	<b>271,068,030.16€</b>	<b>100.00%</b>

<b>Ref No</b>	Table 1.4
<b>Title</b>	Statistics per Aggregated Classification - BUY
<b>Scope</b>	Day Ahead Market (DAM)
<b>Analysis</b>	Monthly

	MCP [€/MWh]	Total [MWh]	Sys Losses [MWh]	HV [MWh]	MV [MWh]	LV [MWh]	Exports [MWh]
<b>Total</b>	-	4,175,586.17	93,008.00	664,973.48	757,788.16	2,231,415.77	428,400.77
<b>Average</b>	64.17	139,186.21	3,100.27	22,165.78	25,259.61	74,380.53	14,280.03
<b>Min</b>	41.60	122,544.59	2,345.50	19,200.55	18,793.47	64,060.19	2,762.00
<b>Min day</b>	4	4	30	26	30	30	5
<b>Max</b>	74.85	157,471.82	3,976.00	24,259.76	28,254.69	82,788.98	27,693.60
<b>Max day</b>	21	19	21	17	8	9	19
<b>Spread</b>	33.25	34,927.23	1,630.50	5,059.20	9,461.22	18,728.79	24,931.60
<b>Standard Deviation</b>	8.00	9,589.87	476.04	1,568.23	3,275.31	3,609.72	6,178.96

## 2. Market Shares

<b>Ref No</b>	Table 2.1.1			
<b>Title</b>	Market Shares - Upward Capacity Reserves Volumes per Type			
<b>Scope</b>	Balancing Market (BM)			
<b>Analysis</b>	Monthly			
Type	Quantity [MW]	Share [%]	Value [EUR]	Share [%]
aFRR	1,278,910.190	59.44%	1,759,357.20€	61.32%
FCR	116,037.710	5.39%	110,265.84€	3.84%
mFRR	756,631.220	35.17%	999,612.76€	34.84%
<b>Total</b>	<b>2,151,579.130</b>	<b>100.00%</b>	<b>2,869,235.80€</b>	<b>100.00%</b>

<b>Ref No</b>	Table 2.1.2			
<b>Title</b>	Market Shares - Downward Capacity Reserves per Type			
<b>Scope</b>	Balancing Market(BM)			
<b>Analysis</b>	Monthly			
Type	Quantity [MW]	Share [%]	Value [EUR]	Share [%]
aFRR	341,456.640	35.74%	442,326.46€	49.65%
FCR	128,090.440	13.41%	72,704.48€	8.16%
mFRR	485,760.970	50.85%	375,876.68€	42.19%
<b>Total</b>	<b>955,308.050</b>	<b>100.00%</b>	<b>890,907.63€</b>	<b>100.00%</b>

<b>Ref No</b>	Table 2.1.3
<b>Title</b>	Market Shares - Upward Activated Balancing Energy per Type
<b>Scope</b>	Balancing Market (BM)
<b>Analysis</b>	Monthly

Type	Quantity [MWh]	Share [%]	Value [EUR]	Share [%]
aFRR	103,468.850	27.06%	11,388,308.55€	27.40%
mFRR	278,965.300	72.94%	30,176,556.44€	72.60%
<b>Total</b>	<b>382,434.150</b>	<b>100.00%</b>	<b>41,564,864.98€</b>	<b>100.00%</b>

<b>Ref No</b>	Table 2.1.4
<b>Title</b>	Market Shares - Downward Activated Balancing Energy per Type
<b>Scope</b>	Balancing Market (BM)
<b>Analysis</b>	Monthly

Type	Quantity [MWh]	Share [%]	Value [EUR]	Share [%]
aFRR	95,486.630	30.08%	2,422,881.17€	30.43%
mFRR	221,990.920	69.92%	5,538,349.13€	69.57%
<b>Total</b>	<b>317,477.550</b>	<b>100.00%</b>	<b>7,961,230.30€</b>	<b>100.00%</b>

### 3. Market Overview

<b>Ref No</b>	Table 3.1
<b>Title</b>	Total Transactions Quantity per Market
<b>Scope</b>	DAM, IDM, Balancing Energy Market
<b>Analysis</b>	Monthly

Market	Quantity [MWh]	Share [%]
DAM	4,175,586.31	96.99%
IDMA1	37,802.93	0.88%
IDMA2	16,966.20	0.39%
IDMA3	9,712.30	0.23%
IDM (Total)	64,481.43	1.50%
Balancing Energy (Up)	382,434.15	8.88%
Balancing Energy (Dn)	317,477.55	7.37%
Balancing Energy (Total)	64,956.60	1.51%
<b>Total</b>	<b>4,305,024.34</b>	<b>100.00%</b>

<b>Ref No</b>	Table 3.2
<b>Title</b>	Total Transactions Value per Market
<b>Scope</b>	DAM, IDM, Balancing Energy Market
<b>Analysis</b>	Monthly

Market	Value [EUR]	Share [%]
DAM	271,068,049.74€	86.76%
IDMA1	2,282,138.57€	0.73%
IDMA2	1,078,837.10€	0.35%
IDMA3	640,663.79€	0.21%
IDM (Total)	4,001,639.46€	1.28%
Balancing Capacity (Up)	2,869,235.80€	0.92%
Balancing Capacity (Dn)	890,907.63€	0.29%
Balancing Capacity (Total)	3,760,143.43€	1.20%
Balancing Energy (Up)	41,564,864.98€	13.30%
Balancing Energy (Dn)	7,961,230.30€	2.55%
Balancing Energy (Total)	33,603,634.68€	10.76%
Balancing Market (Total)	37,363,778.11€	11.96%
<b>Total</b>	<b>312,433,467.31€</b>	<b>100.00%</b>