

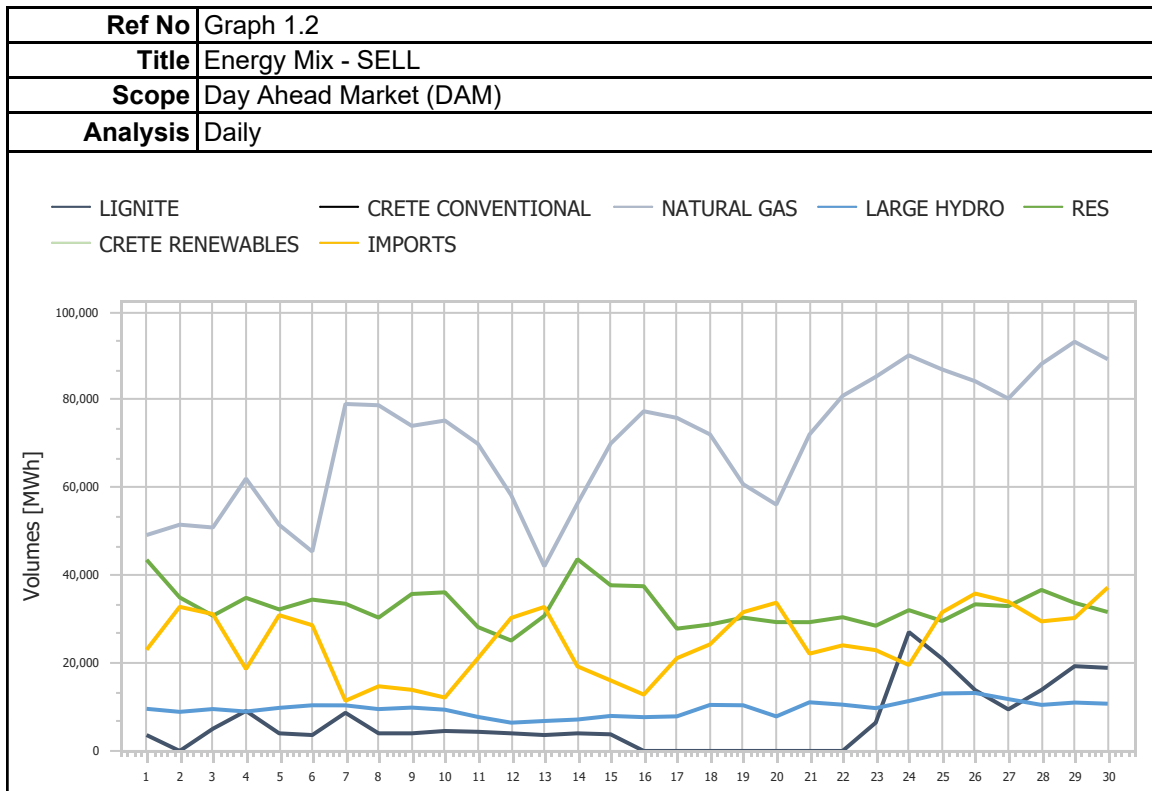
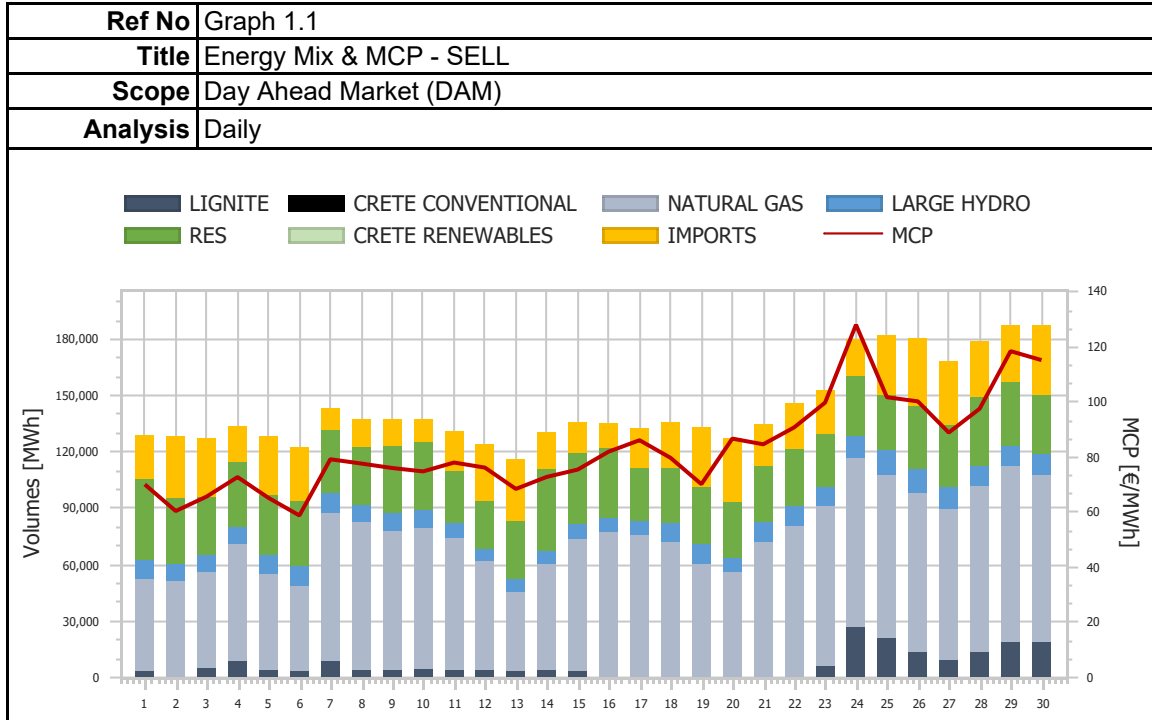
# Market Monitoring Report

Monthly - Public - 2

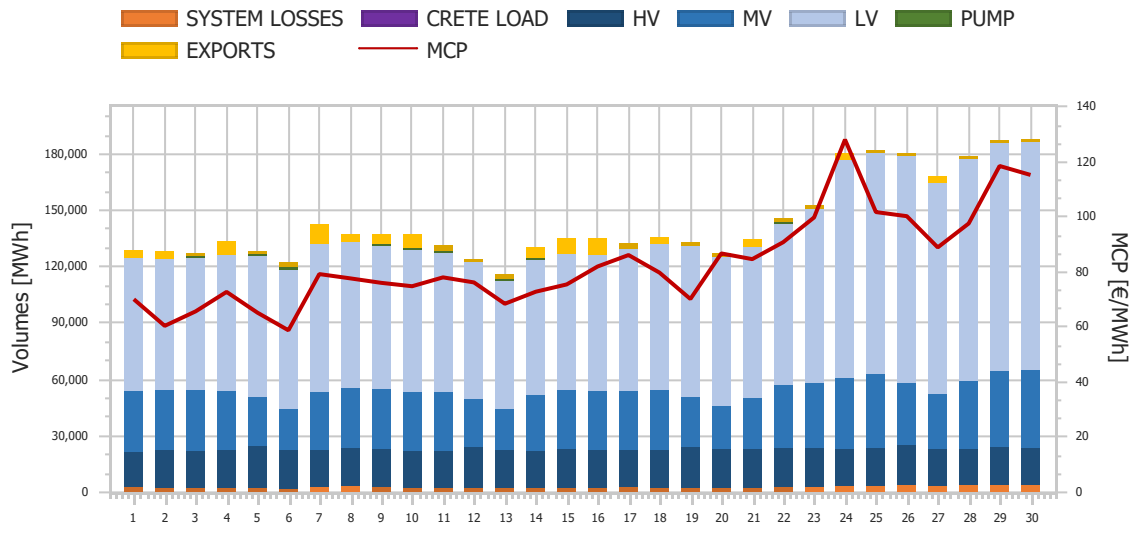
**06-2021**



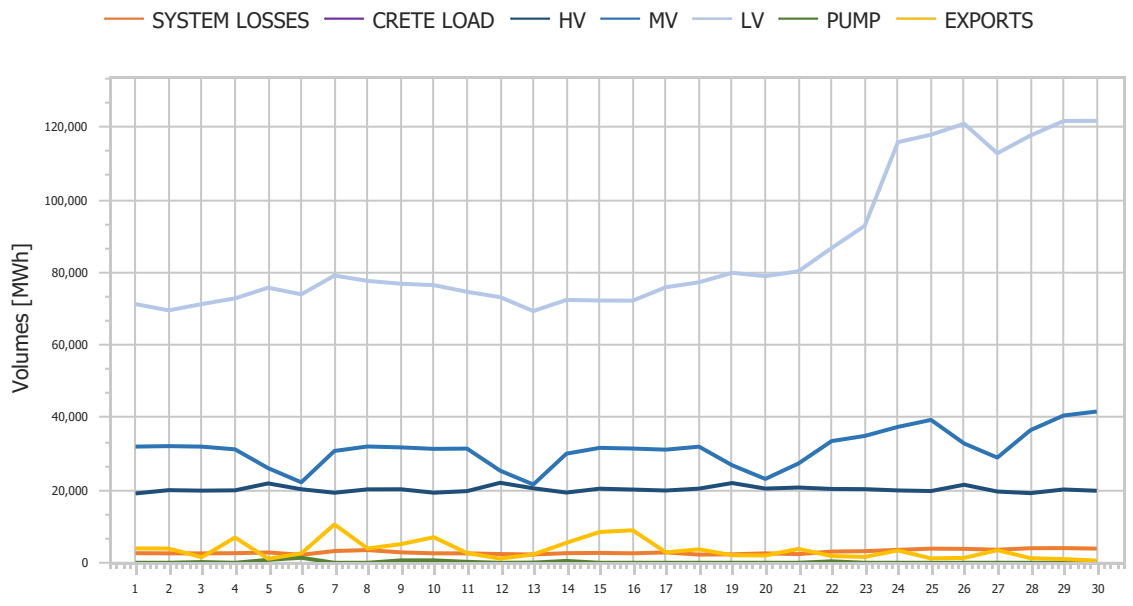
# 1. Day Ahead Market (DAM)



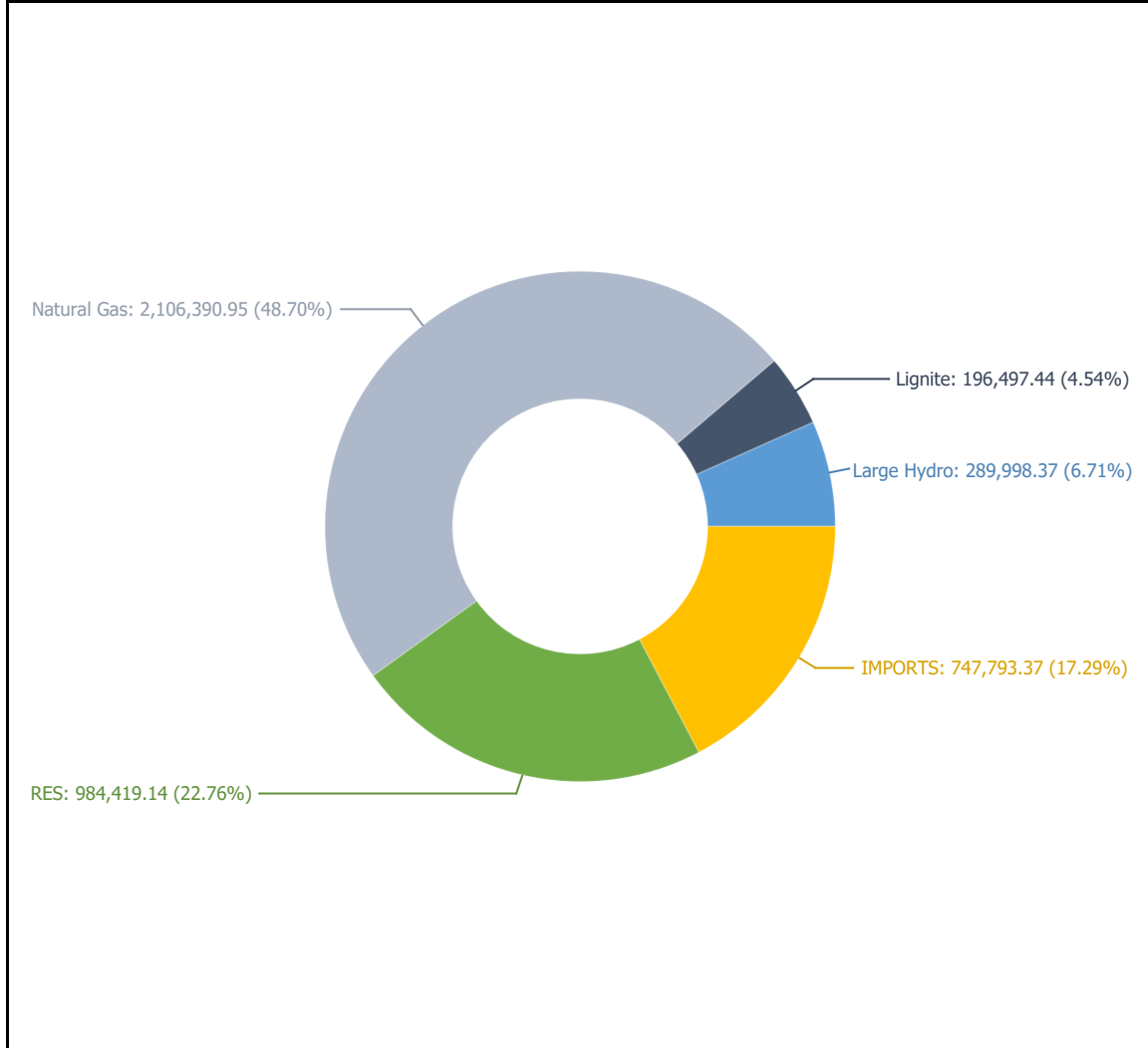
<b>Ref No</b>	Graph 1.3
<b>Title</b>	Energy Mix & MCP - BUY
<b>Scope</b>	Day Ahead Market (DAM)
<b>Analysis</b>	Daily



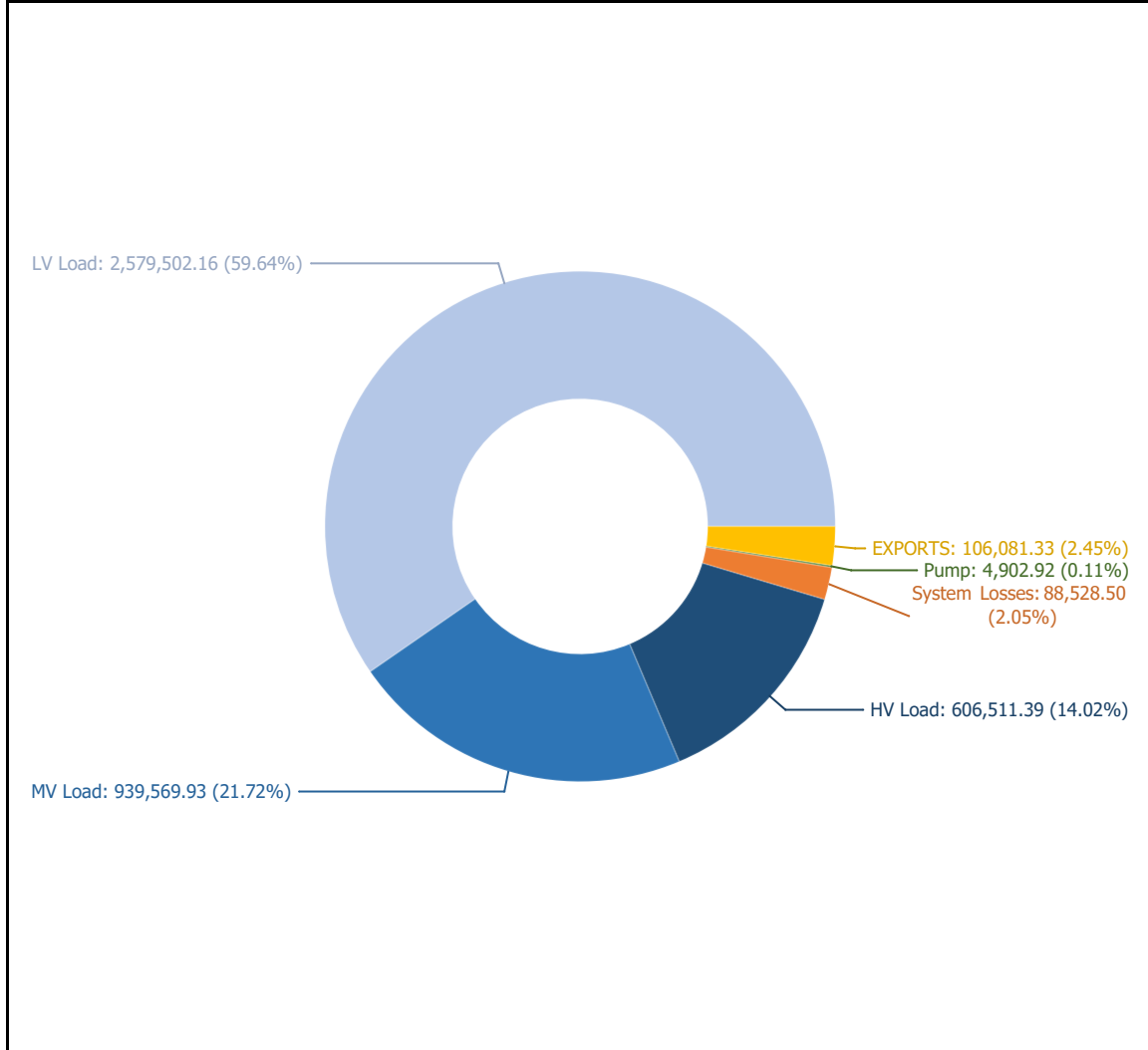
<b>Ref No</b>	Graph 1.4
<b>Title</b>	Energy Mix - BUY
<b>Scope</b>	Day Ahead Market (DAM)
<b>Analysis</b>	Daily



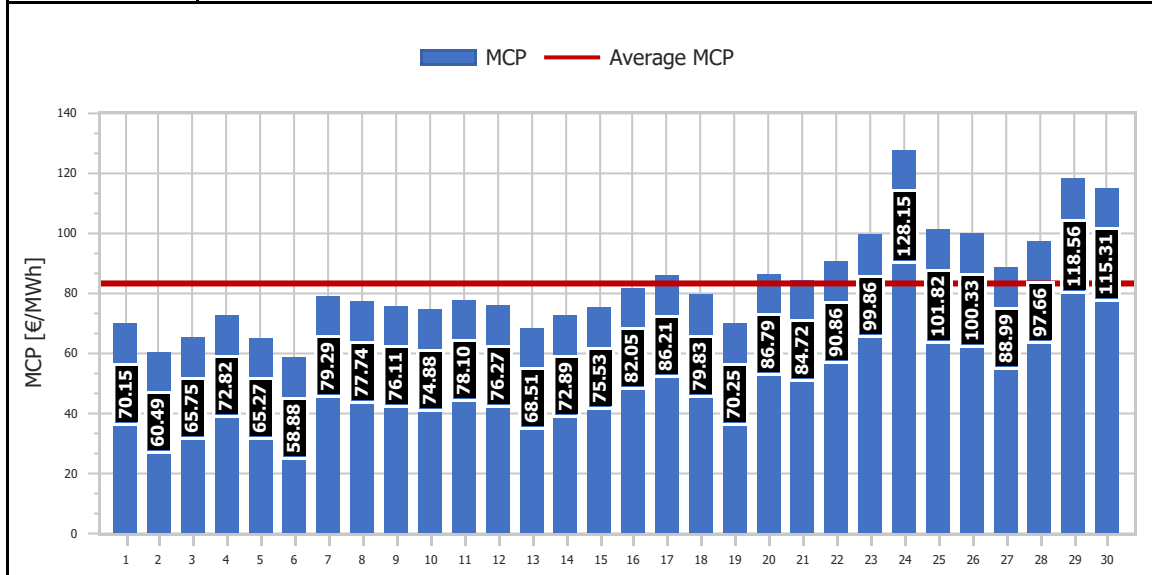
<b>Ref No</b>	Graph 1.5
<b>Title</b>	Energy Mix - SELL
<b>Scope</b>	Day Ahead Market (DAM)
<b>Analysis</b>	Daily



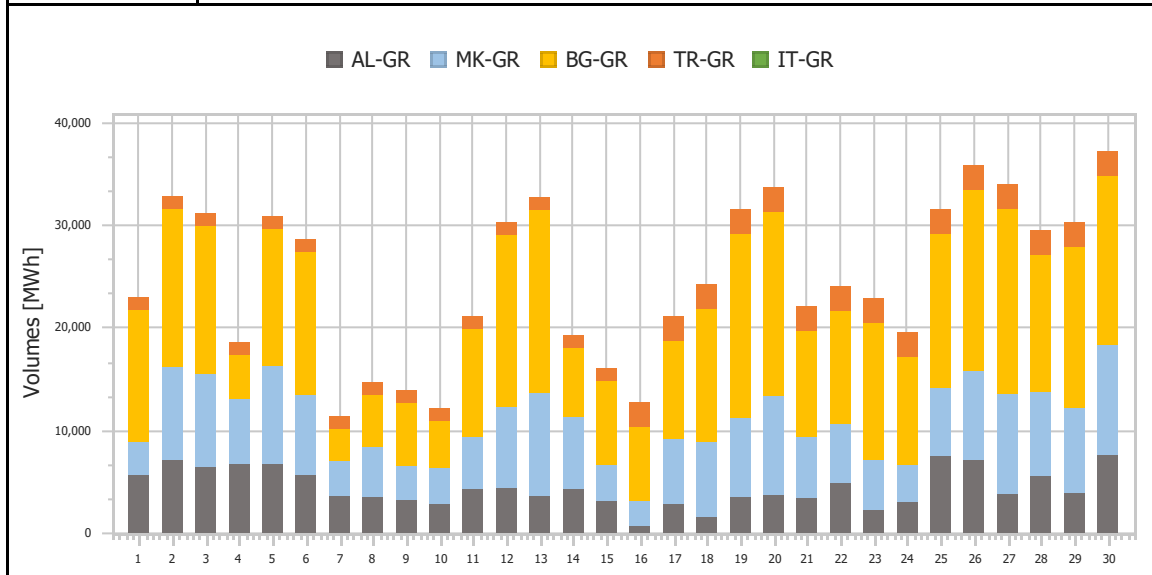
<b>Ref No</b>	Graph 1.6
<b>Title</b>	Energy Mix - BUY
<b>Scope</b>	Day Ahead Market (DAM)
<b>Analysis</b>	Daily



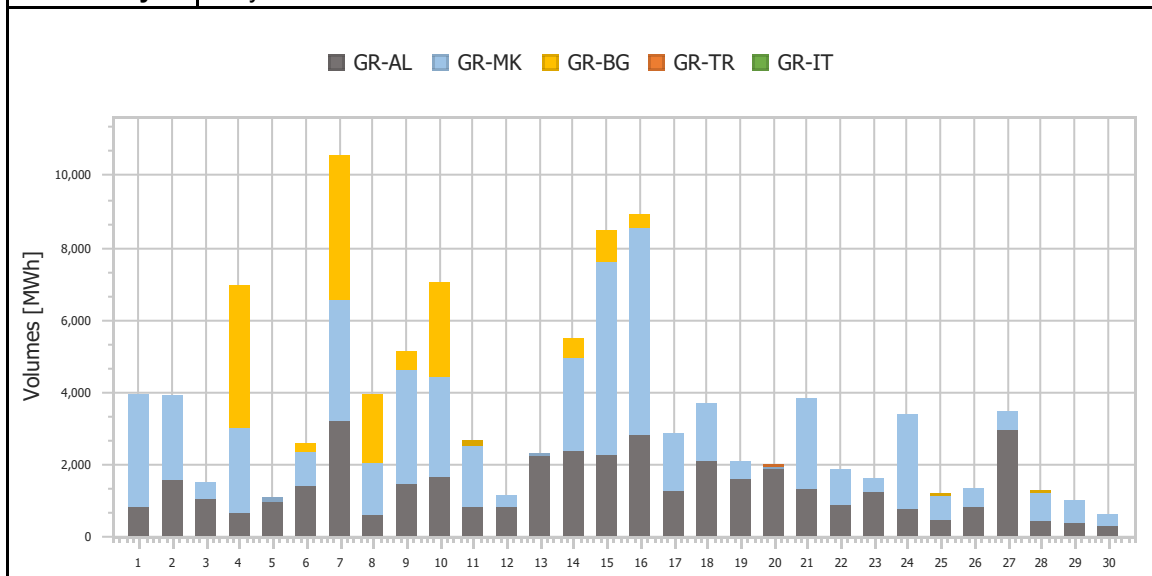
<b>Ref No</b>	Graph 1.7
<b>Title</b>	Market Clearing Price (MCP)
<b>Scope</b>	Day Ahead Market (DAM)
<b>Analysis</b>	Daily



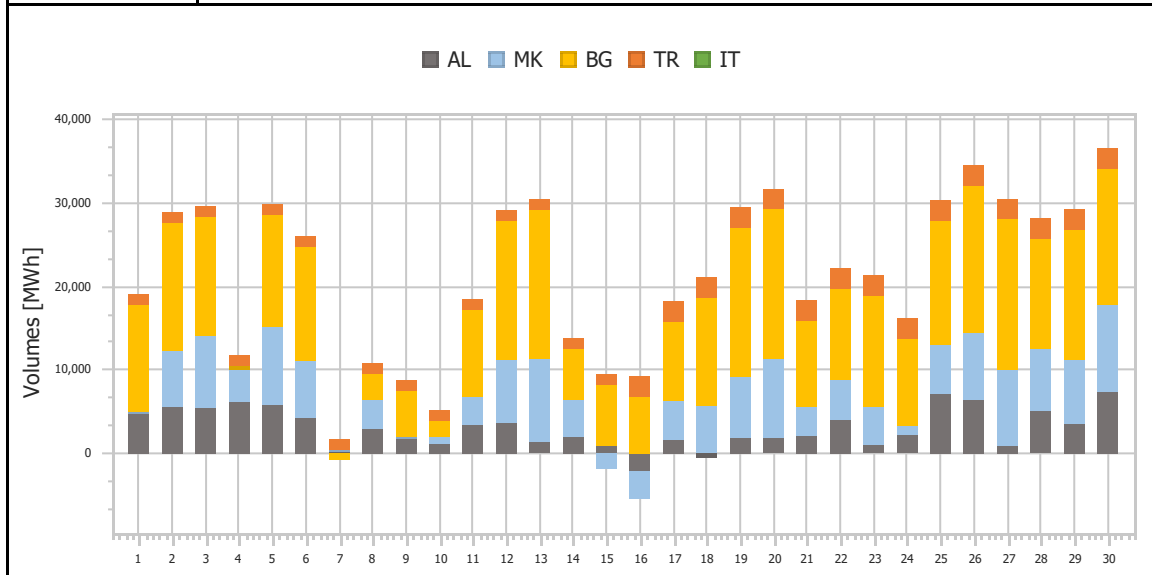
<b>Ref No</b>	Graph 1.8
<b>Title</b>	Imports per Border
<b>Scope</b>	Day Ahead Market (DAM)
<b>Analysis</b>	Daily



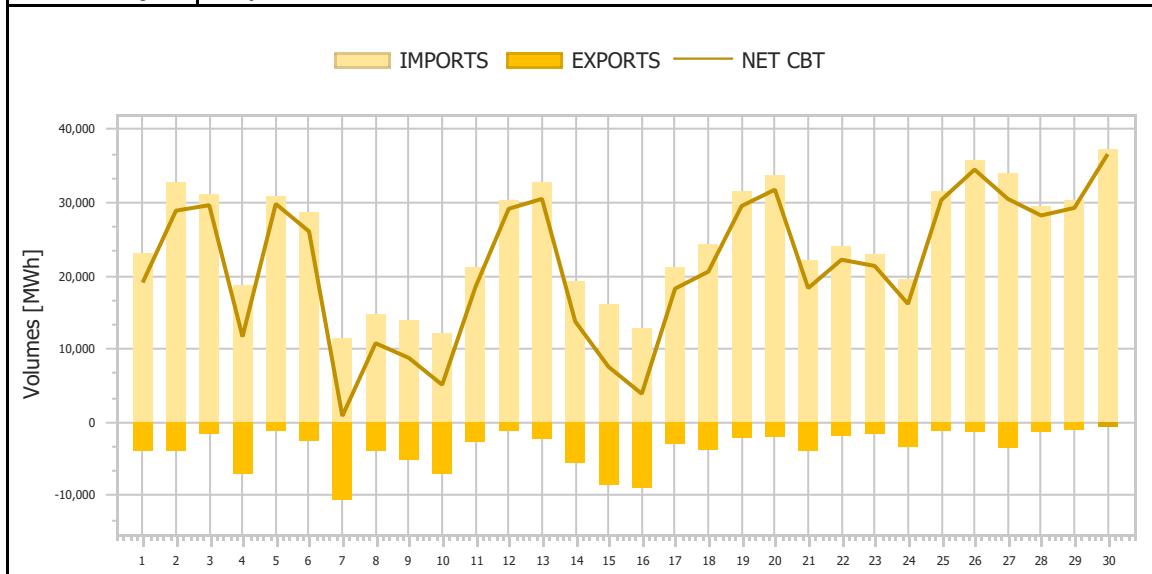
<b>Ref No</b>	Graph 1.9
<b>Title</b>	Exports per Border
<b>Scope</b>	Day Ahead Market (DAM)
<b>Analysis</b>	Daily



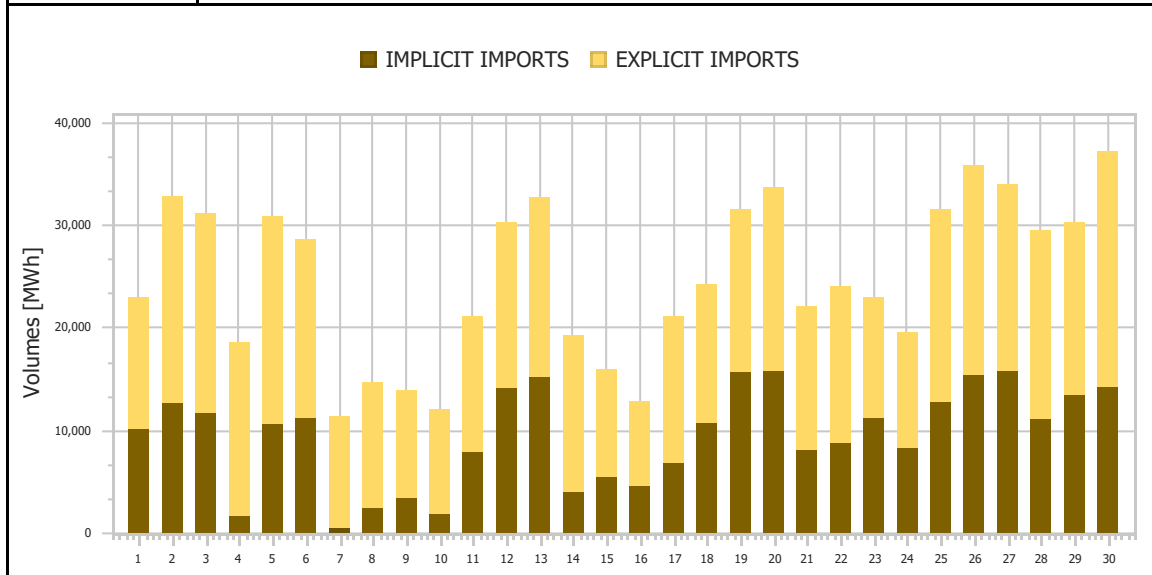
<b>Ref No</b>	Graph 1.10
<b>Title</b>	Net Imports per Border
<b>Scope</b>	Day Ahead Market (DAM)
<b>Analysis</b>	Daily



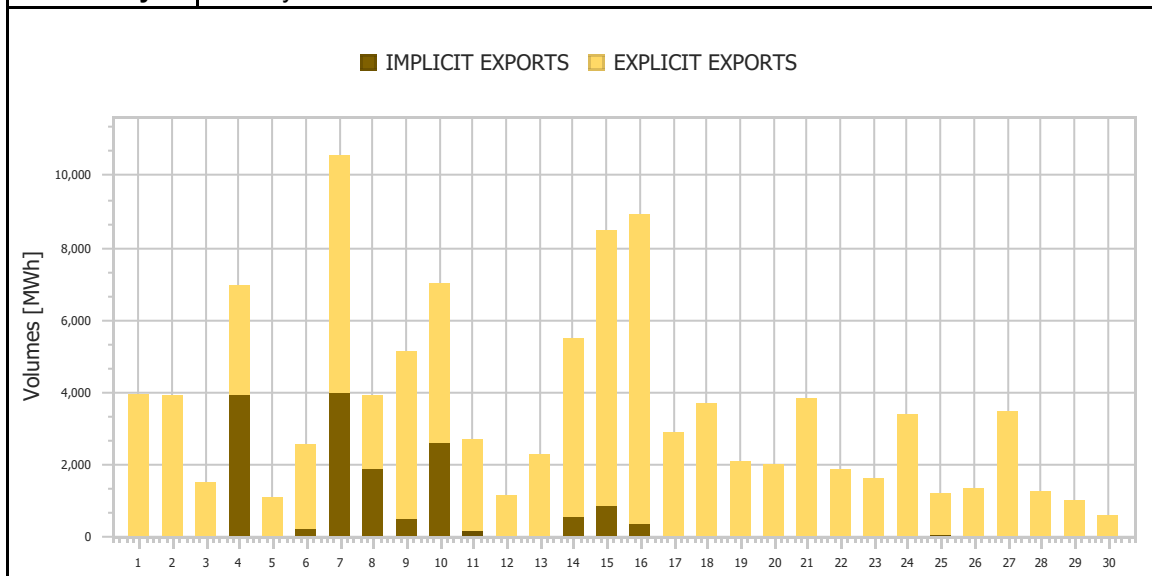
<b>Ref No</b>	Graph 1.11
<b>Title</b>	Total Imports & Exports
<b>Scope</b>	Day Ahead Market (DAM)
<b>Analysis</b>	Daily



<b>Ref No</b>	Graph 1.12
<b>Title</b>	Imports (Implicit/Explicit)
<b>Scope</b>	Day Ahead Market (DAM)
<b>Analysis</b>	Daily

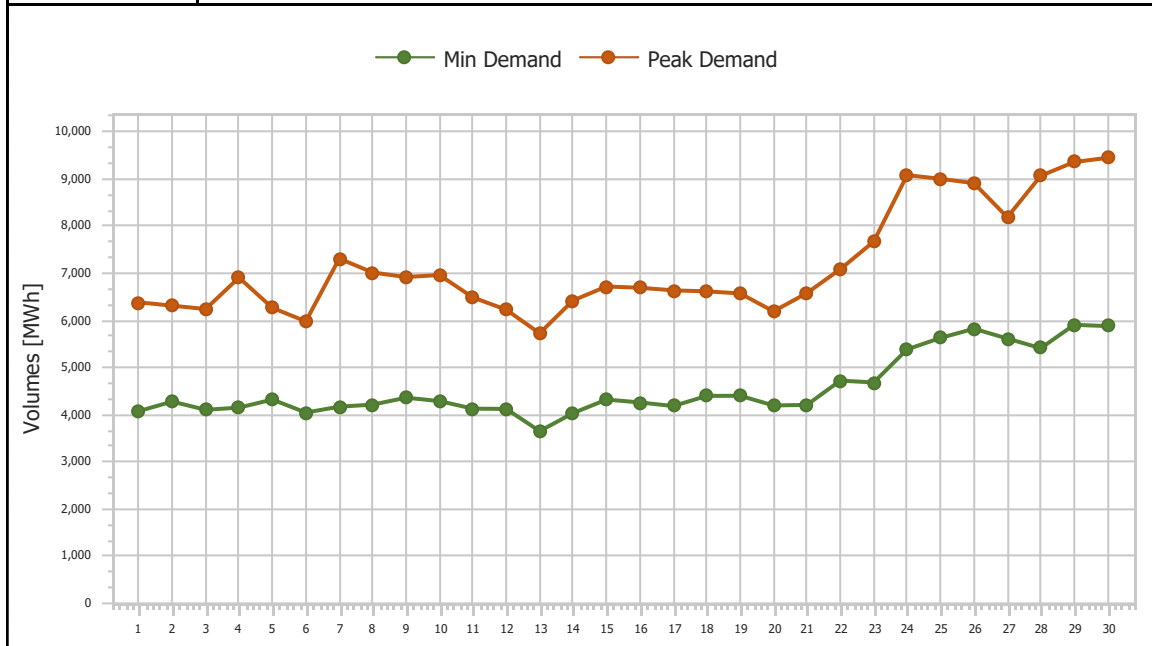


<b>Ref No</b>	Graph 1.13
<b>Title</b>	Exports (Implicit/Explicit)
<b>Scope</b>	Day Ahead Market (DAM)
<b>Analysis</b>	Monthly

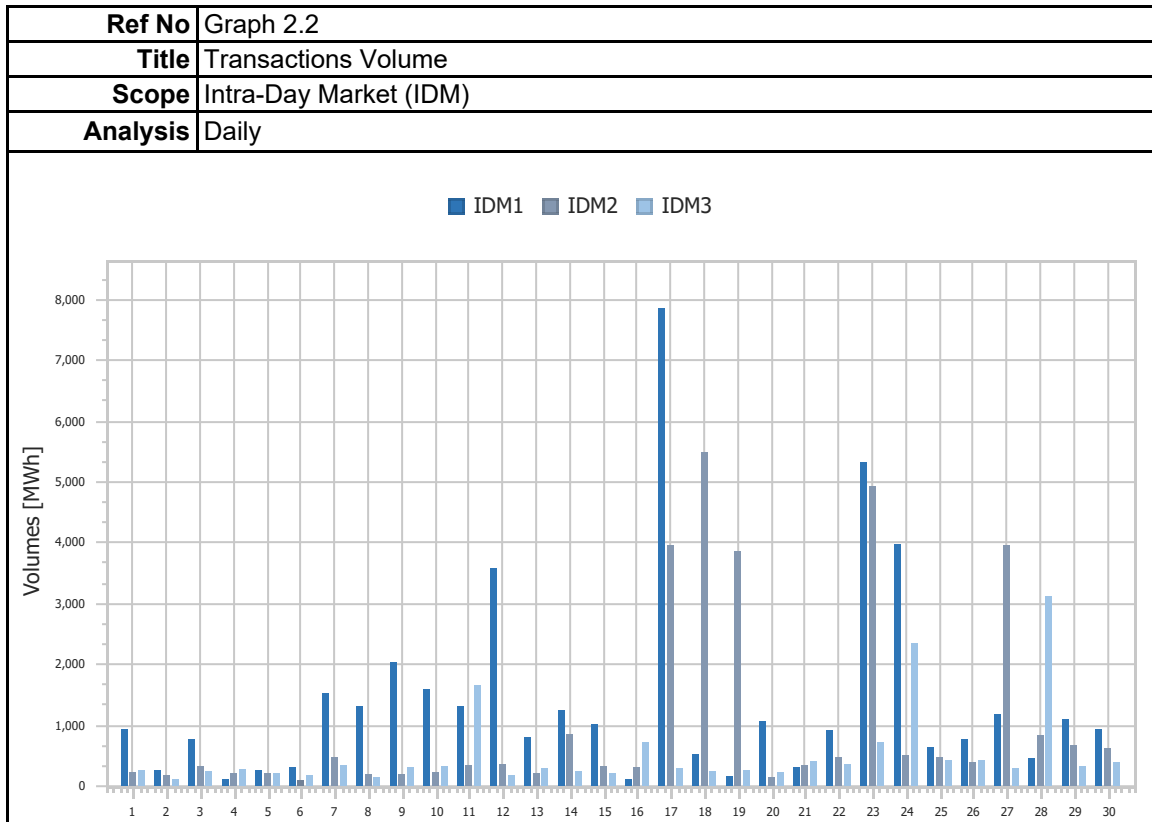
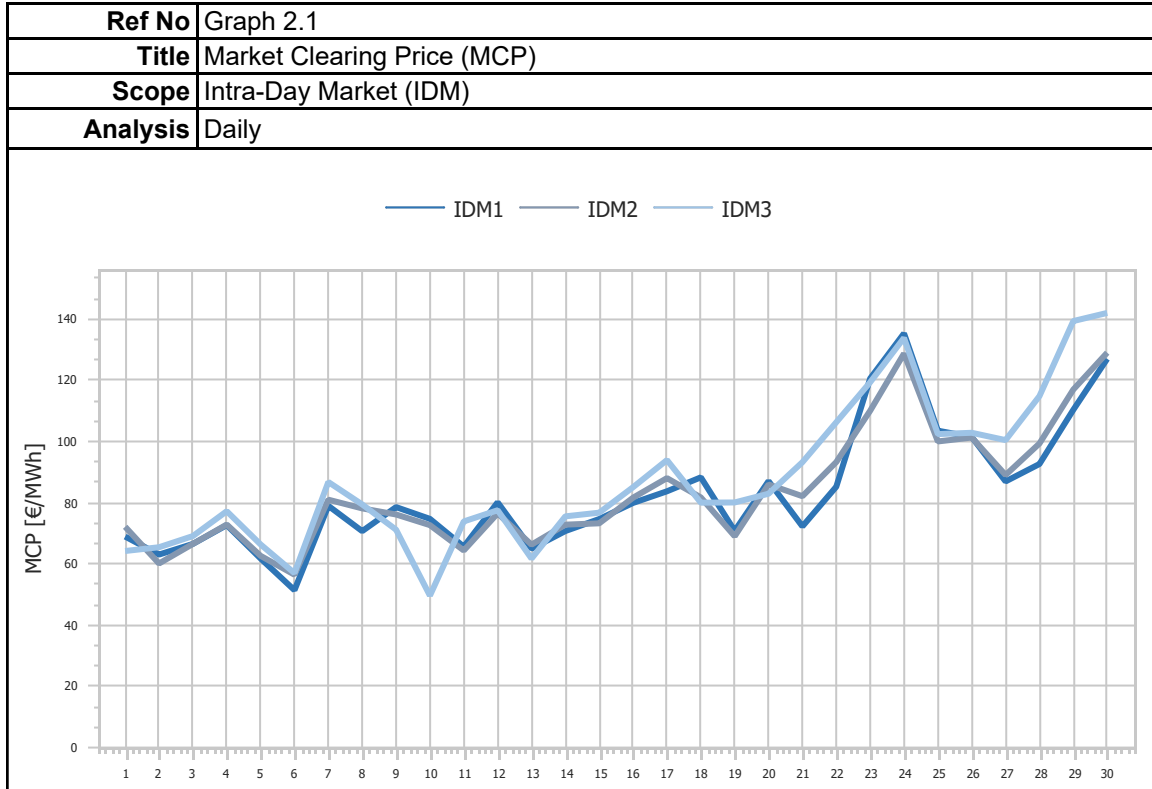


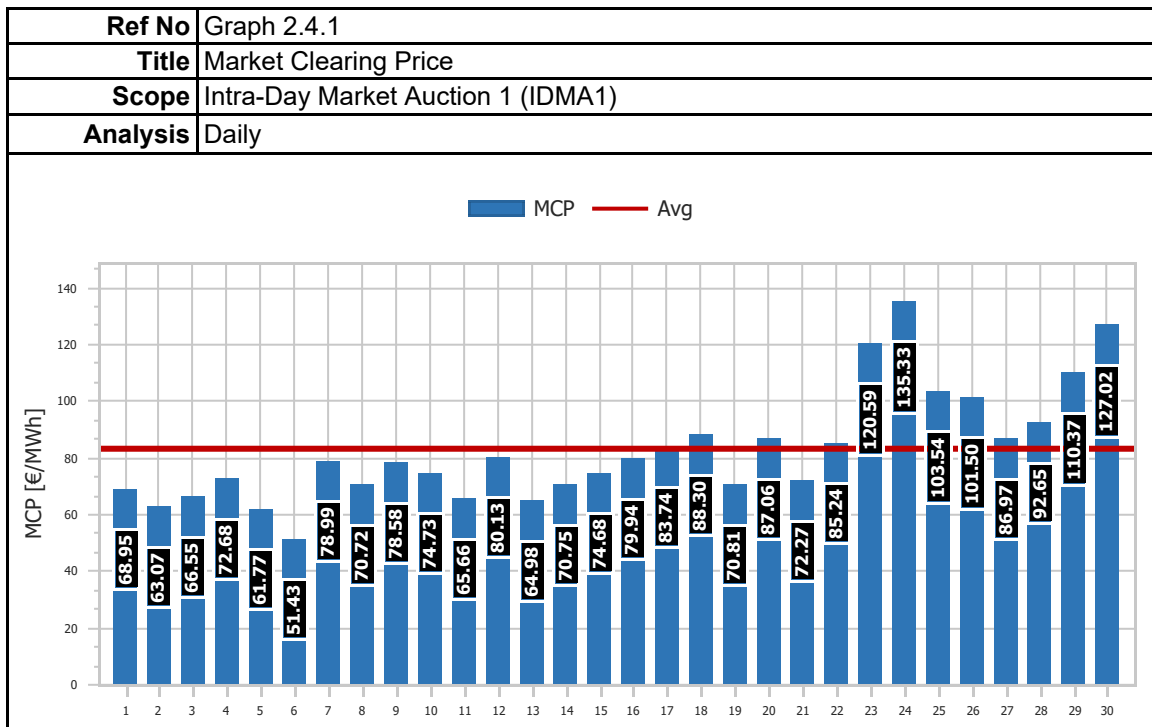
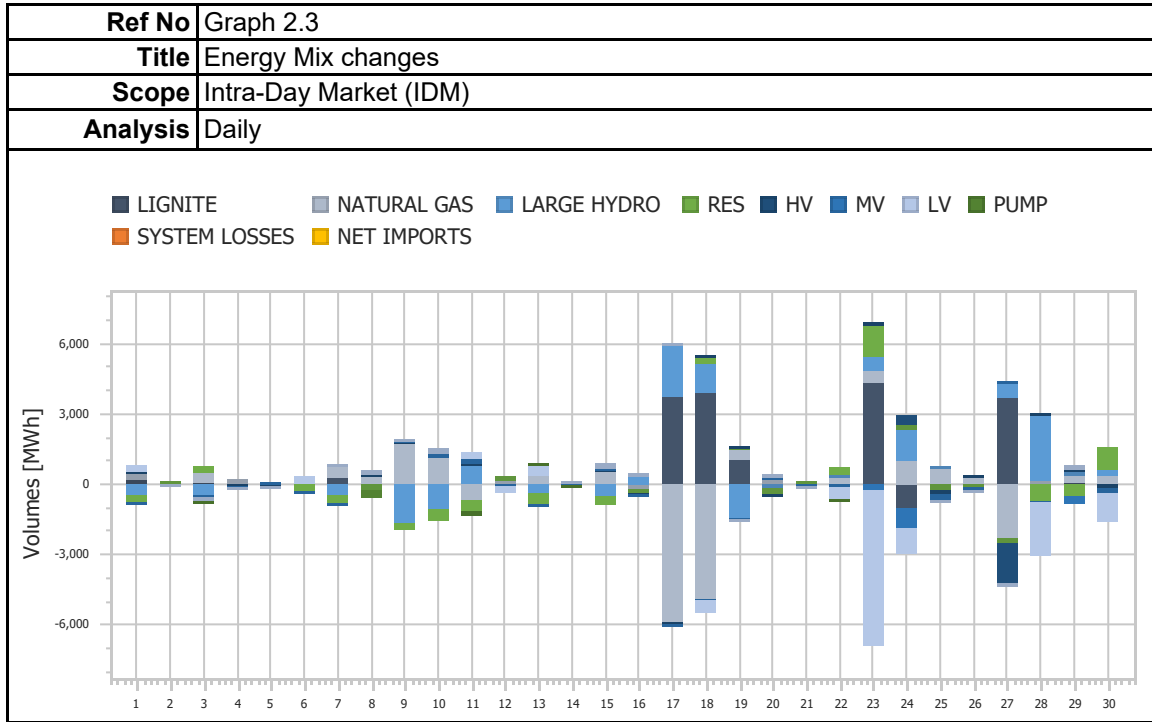


<b>Ref No</b>	Graph 1.14
<b>Title</b>	Min & Peak Demand
<b>Scope</b>	Day Ahead Market (DAM)
<b>Analysis</b>	Daily

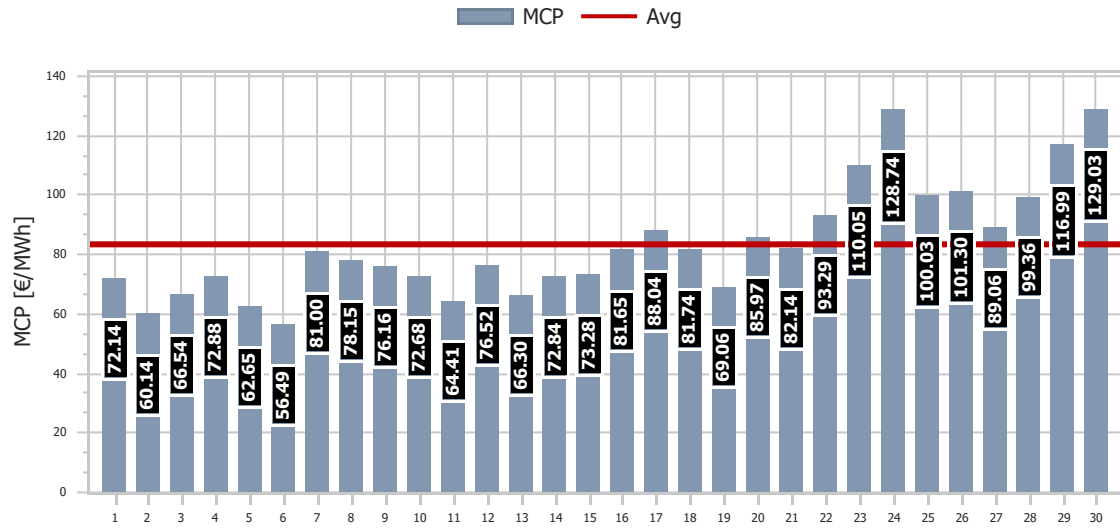


## 2. Intra-Day Market (IDM)

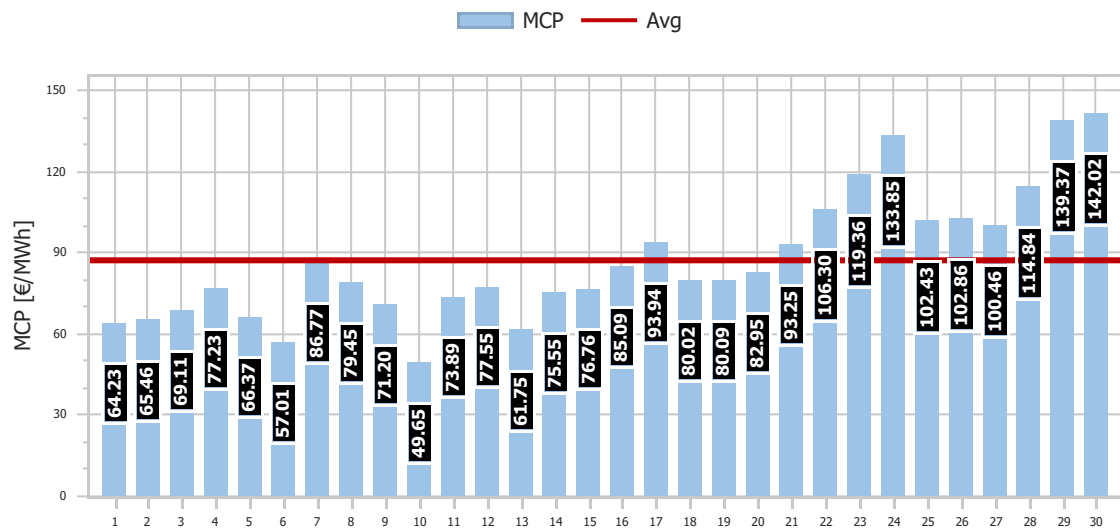




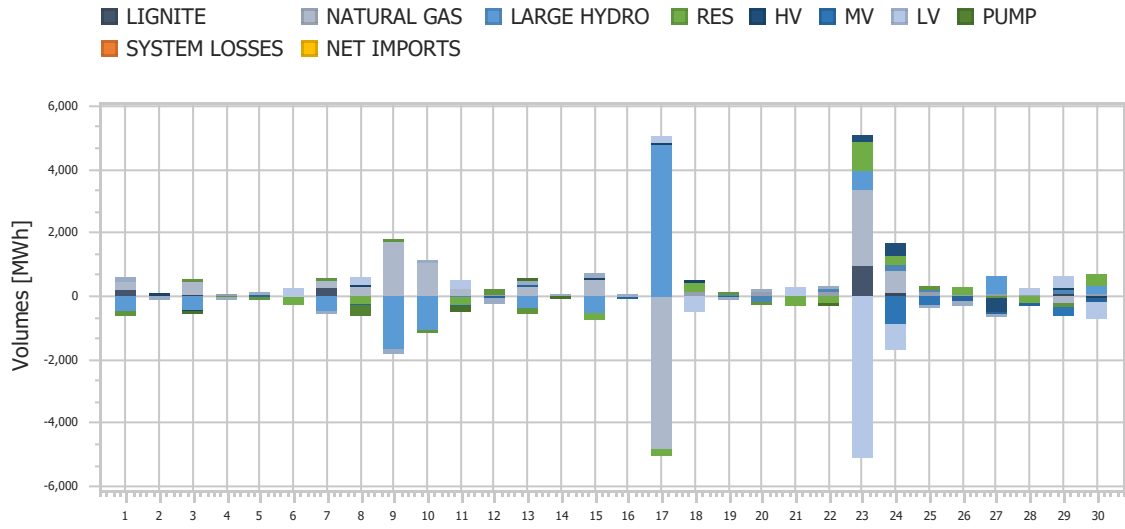
<b>Ref No</b>	Graph 2.4.2
<b>Title</b>	Market Clearing Price
<b>Scope</b>	Intra-Day Market Auction 2 (IDMA2)
<b>Analysis</b>	Daily



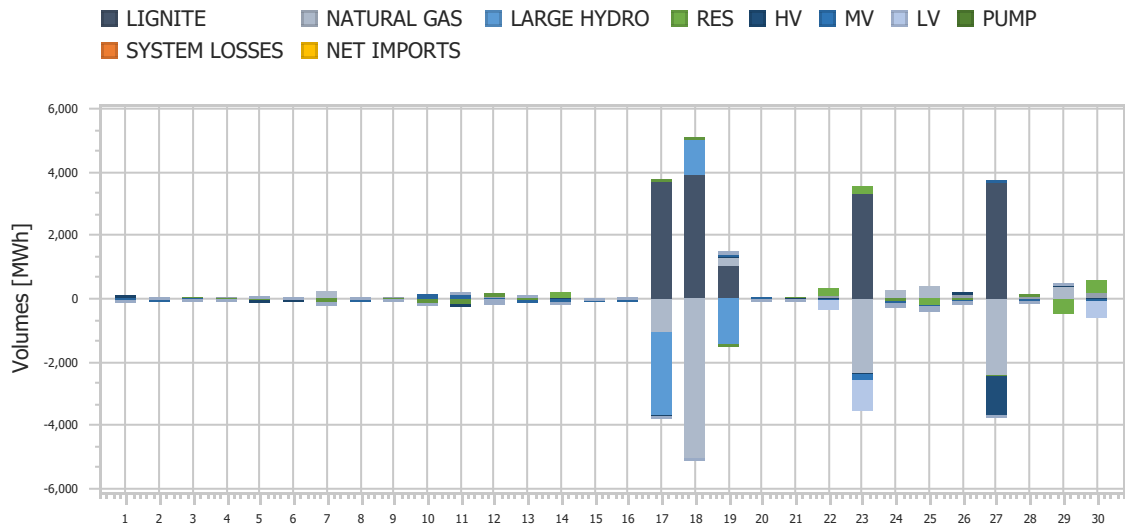
<b>Ref No</b>	Graph 2.4.3
<b>Title</b>	Market Clearing Price
<b>Scope</b>	Intra-Day Market Auction 3 (IDMA3)
<b>Analysis</b>	Daily

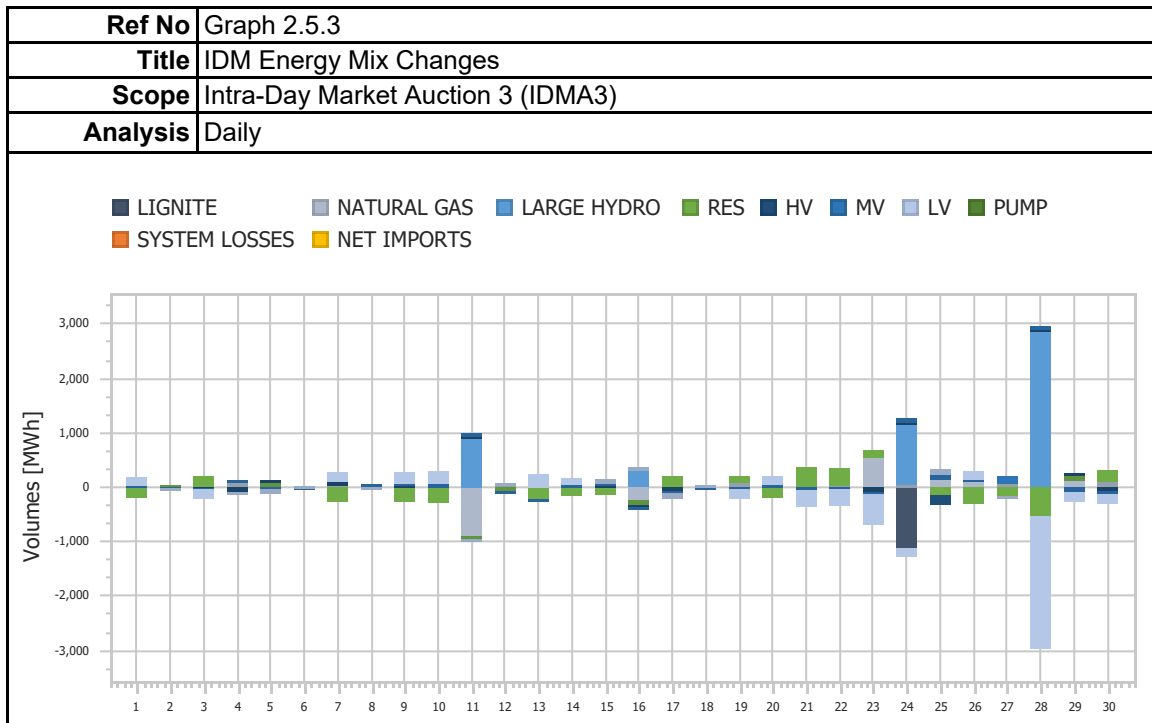


<b>Ref No</b>	Graph 2.5.1
<b>Title</b>	IDM Energy Mix Changes
<b>Scope</b>	Intra-Day Market Auction 1 (IDMA1)
<b>Analysis</b>	Daily

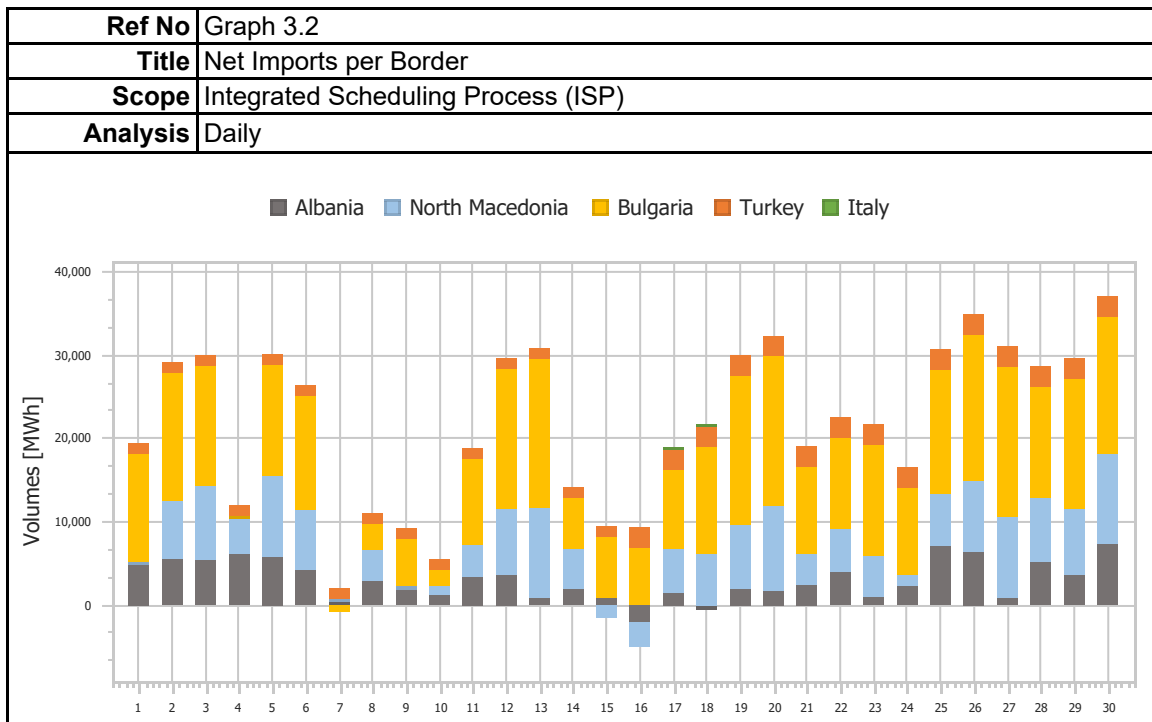
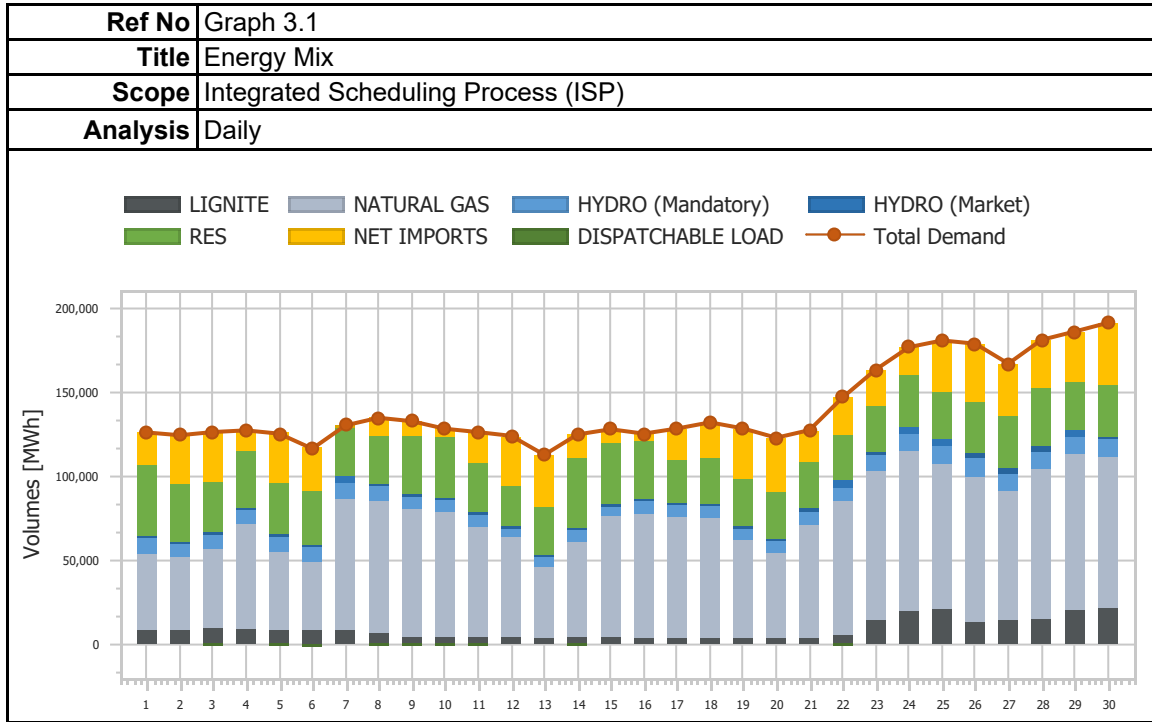


<b>Ref No</b>	Graph 2.5.2
<b>Title</b>	IDM Energy Mix Changes
<b>Scope</b>	Intra-Day Market Auction 2 (IDMA2)
<b>Analysis</b>	Daily

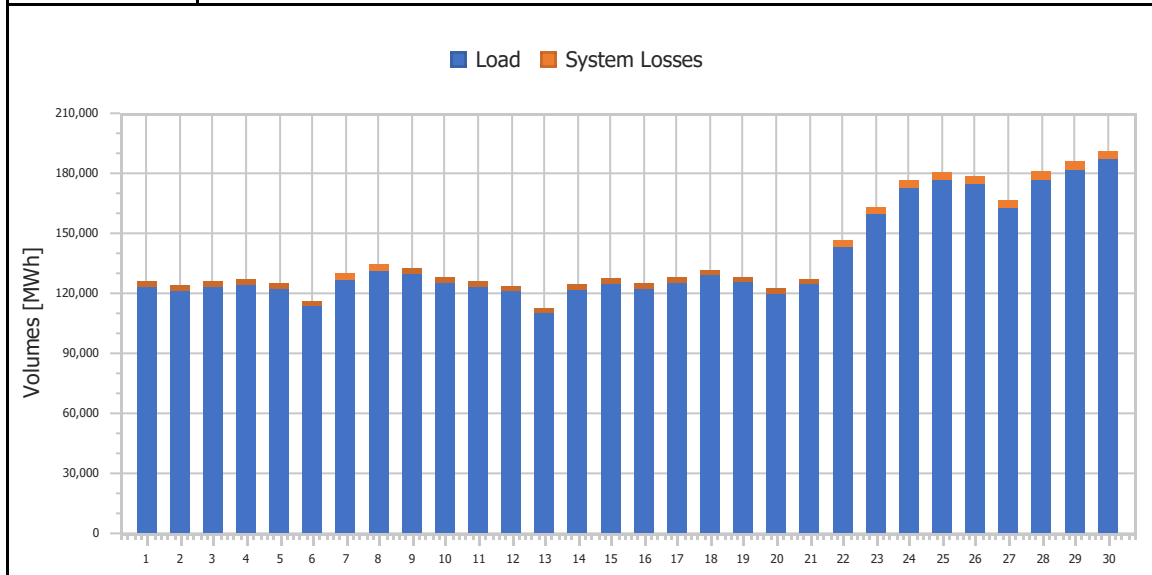




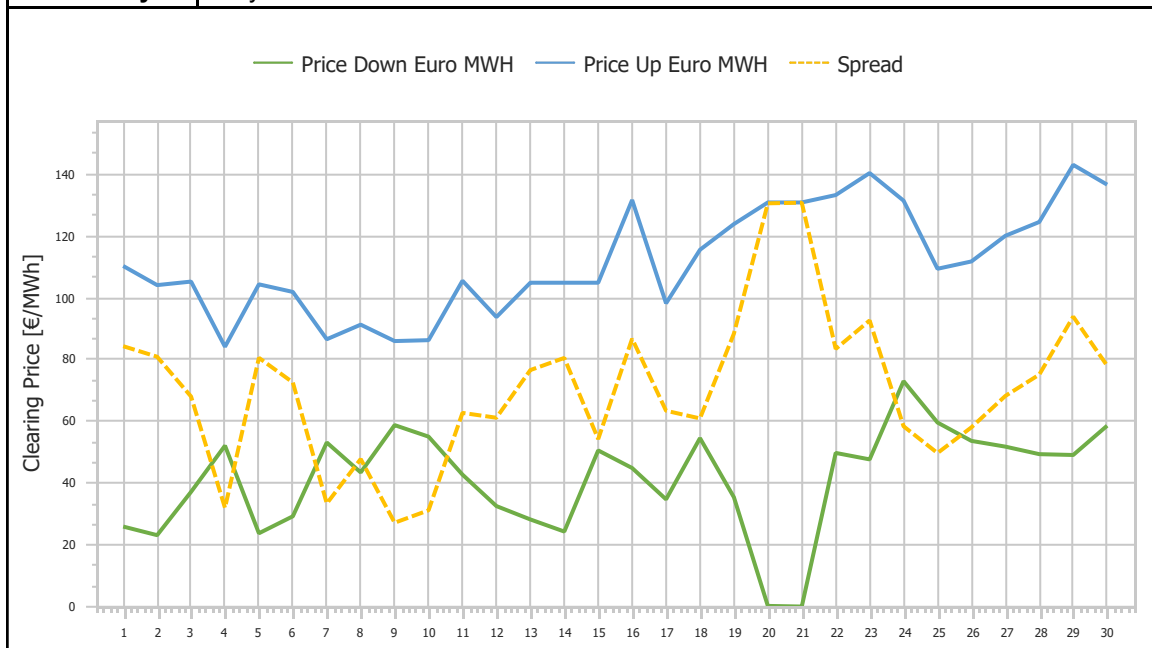
### 3. Integrated Scheduling Process (ISP)



<b>Ref No</b>	Graph 3.3
<b>Title</b>	Demand & System Losses
<b>Scope</b>	Integrated Scheduling Process (ISP)
<b>Analysis</b>	Daily

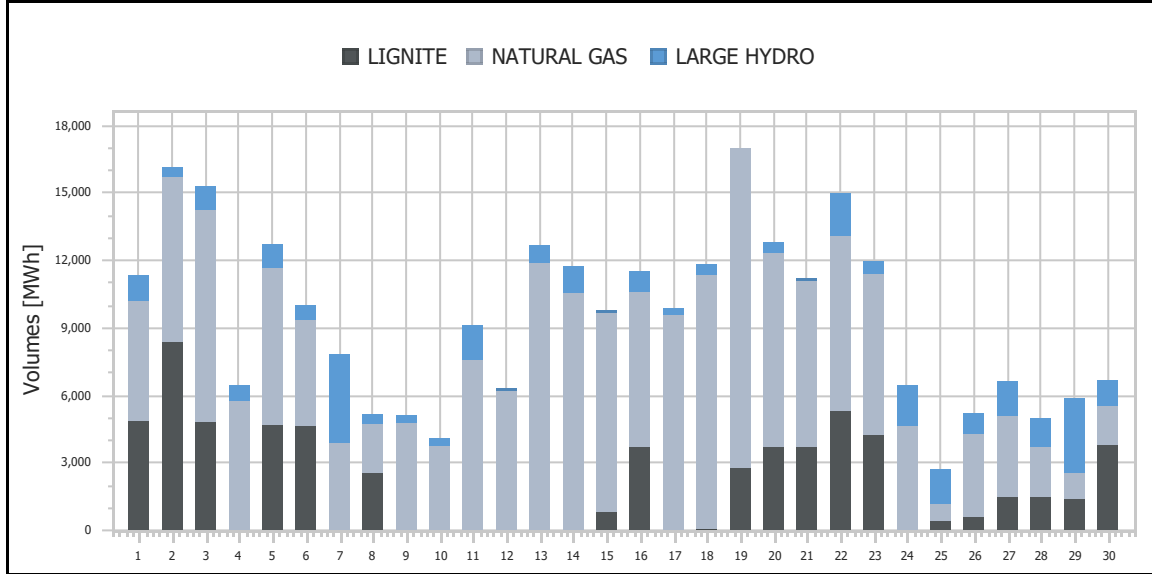


<b>Ref No</b>	Graph 3.4
<b>Title</b>	Clearing Prices
<b>Scope</b>	Integrated Scheduling Process (ISP)
<b>Analysis</b>	Daily

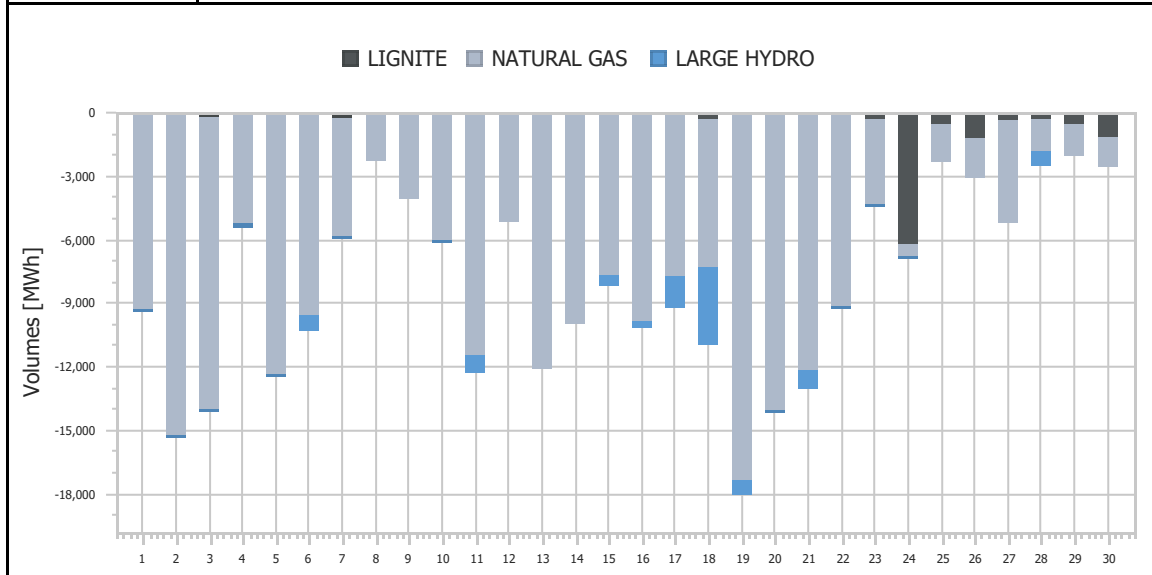




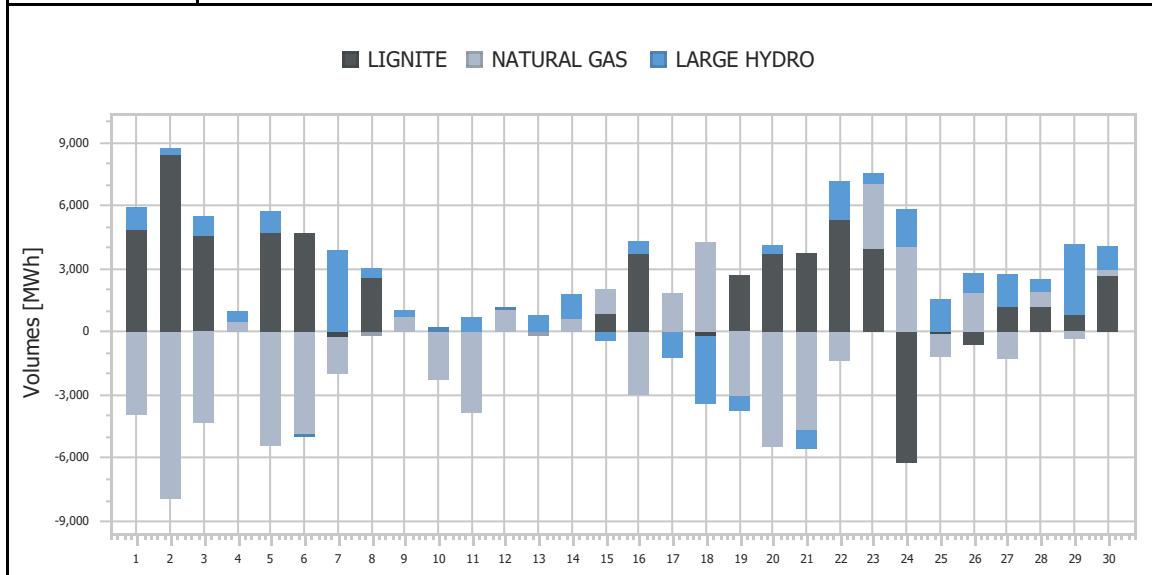
<b>Ref No</b>	Graph 3.5
<b>Title</b>	Upward Activated Balancing energy
<b>Scope</b>	Integrated Scheduling Process (ISP)
<b>Analysis</b>	Daily



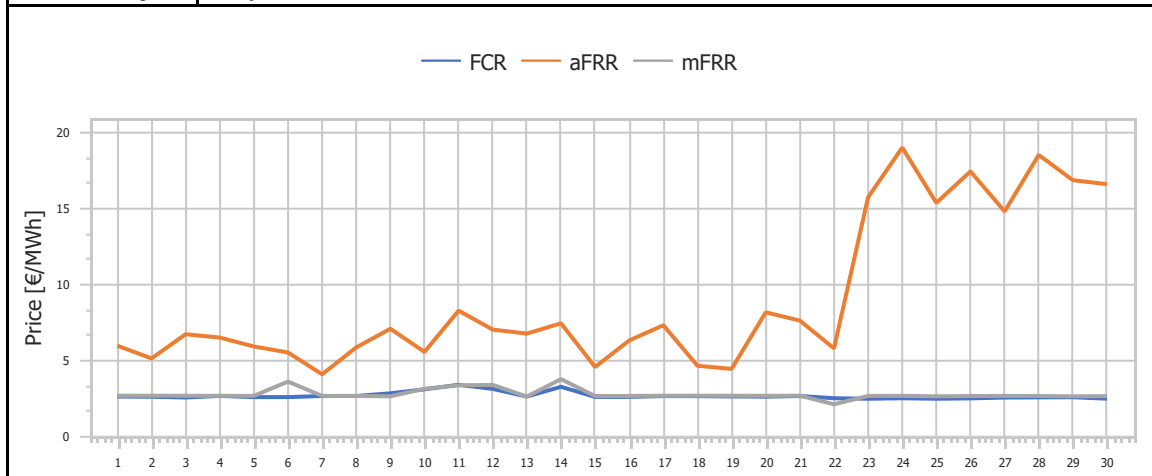
<b>Ref No</b>	Graph 3.6
<b>Title</b>	Downward Activated Balancing energy
<b>Scope</b>	Integrated Scheduling Process (ISP)
<b>Analysis</b>	Daily



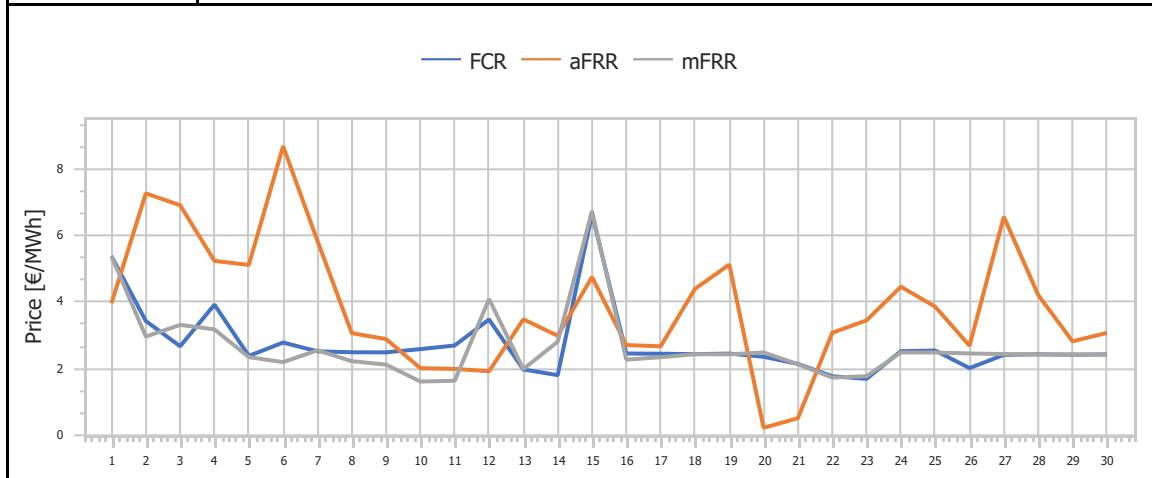
<b>Ref No</b>	Graph 3.7
<b>Title</b>	Net Activated Balancing energy
<b>Scope</b>	Integrated Scheduling Process (ISP)
<b>Analysis</b>	Daily



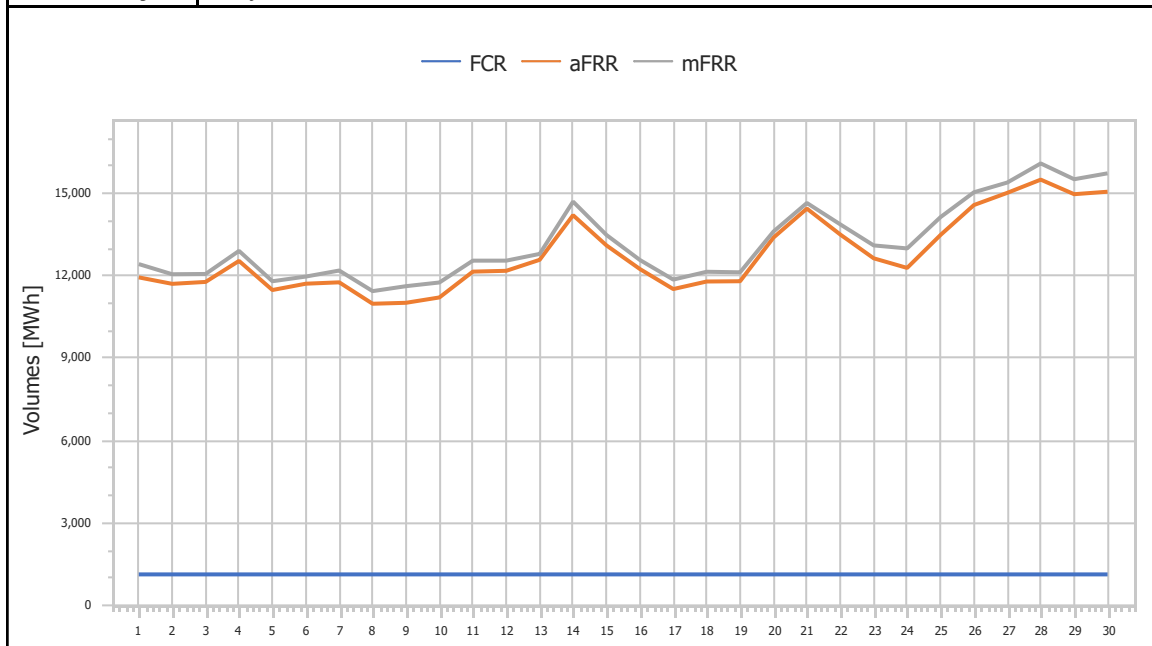
<b>Ref No</b>	Graph 3.8
<b>Title</b>	Upward Capacity Reserves Prices
<b>Scope</b>	Integrated Scheduling Process (ISP)
<b>Analysis</b>	Daily

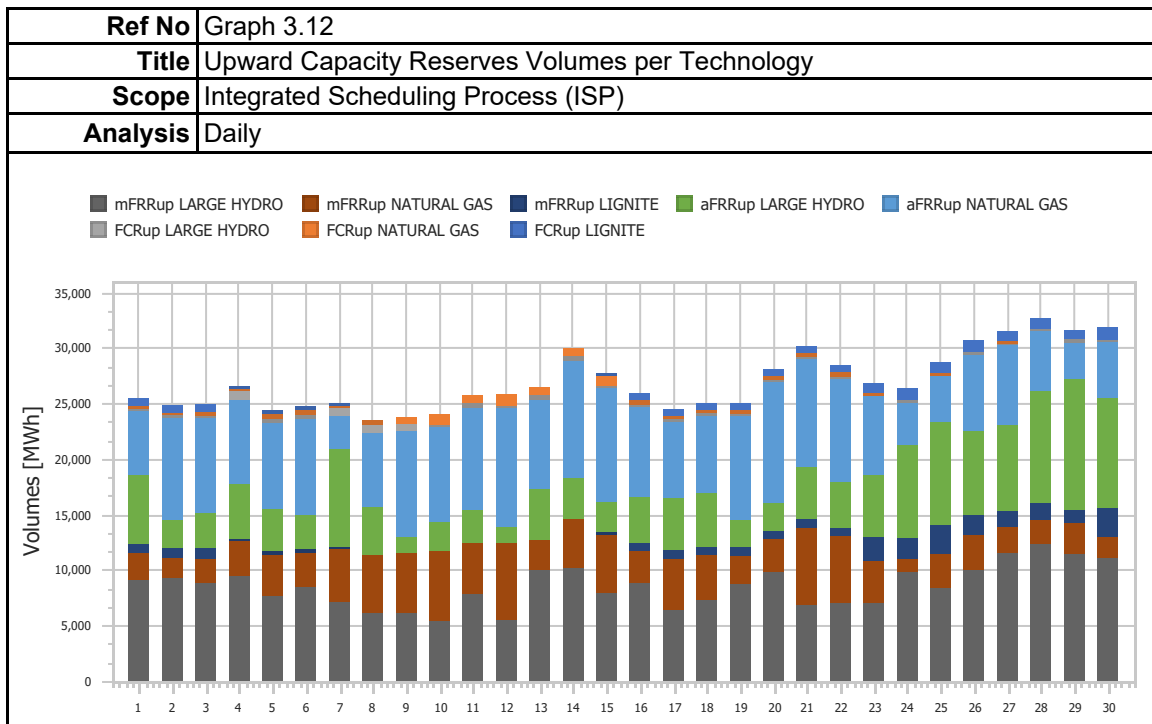
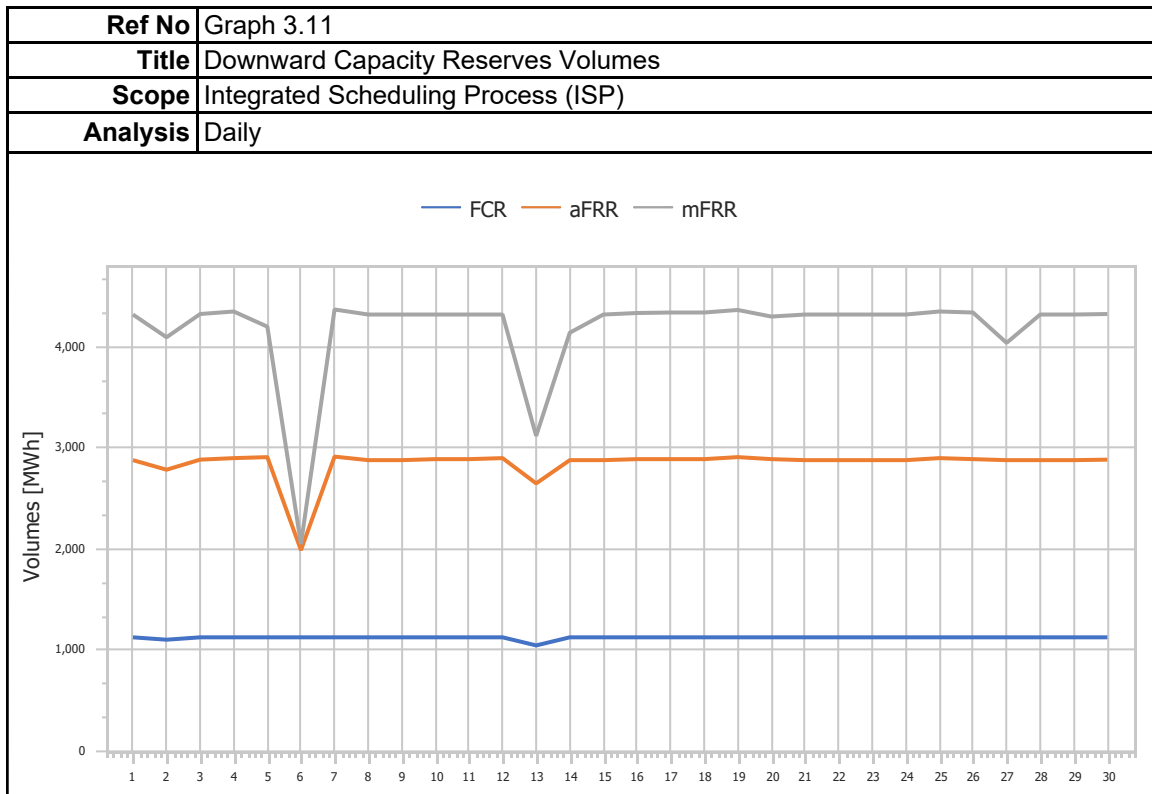


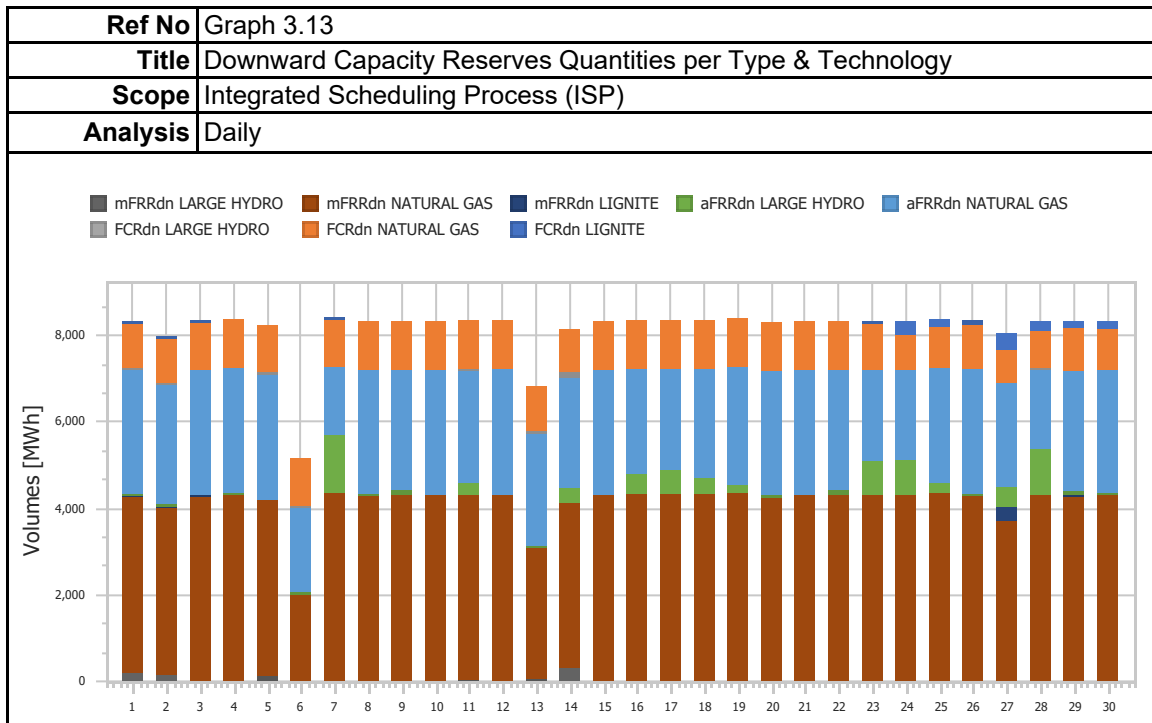
<b>Ref No</b>	Graph 3.9
<b>Title</b>	Downward Capacity Reserves Prices
<b>Scope</b>	Integrated Scheduling Process (ISP)
<b>Analysis</b>	Daily



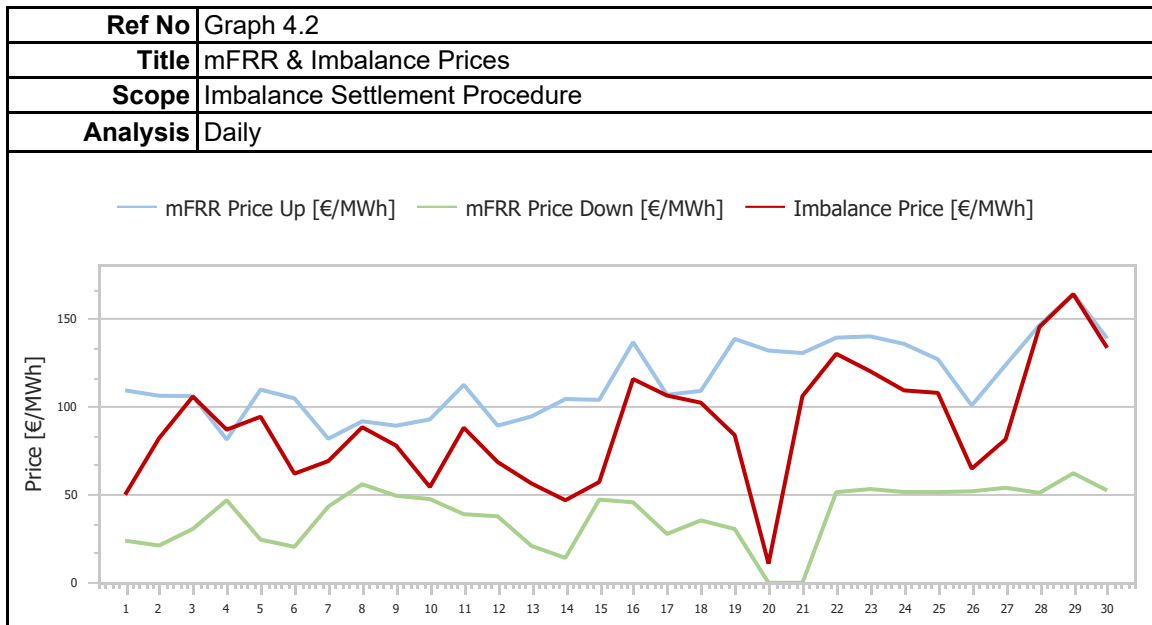
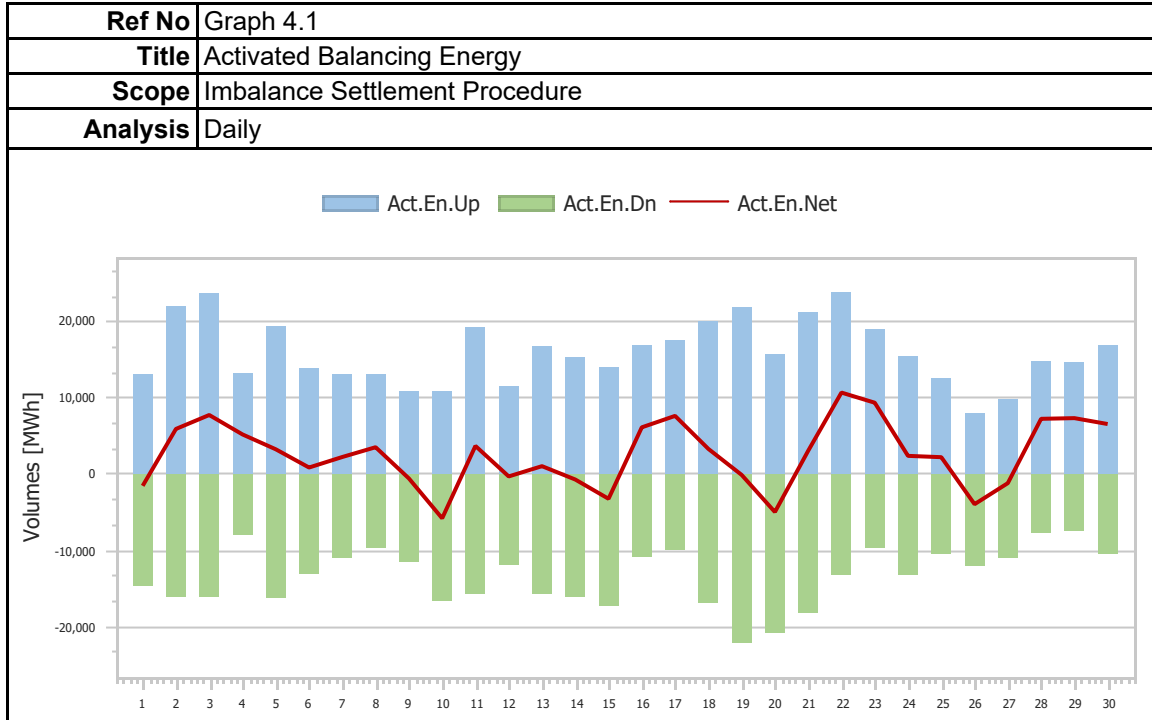
<b>Ref No</b>	Graph 3.10
<b>Title</b>	Upward Capacity Reserves Volumes
<b>Scope</b>	Integrated Scheduling Process (ISP)
<b>Analysis</b>	Daily



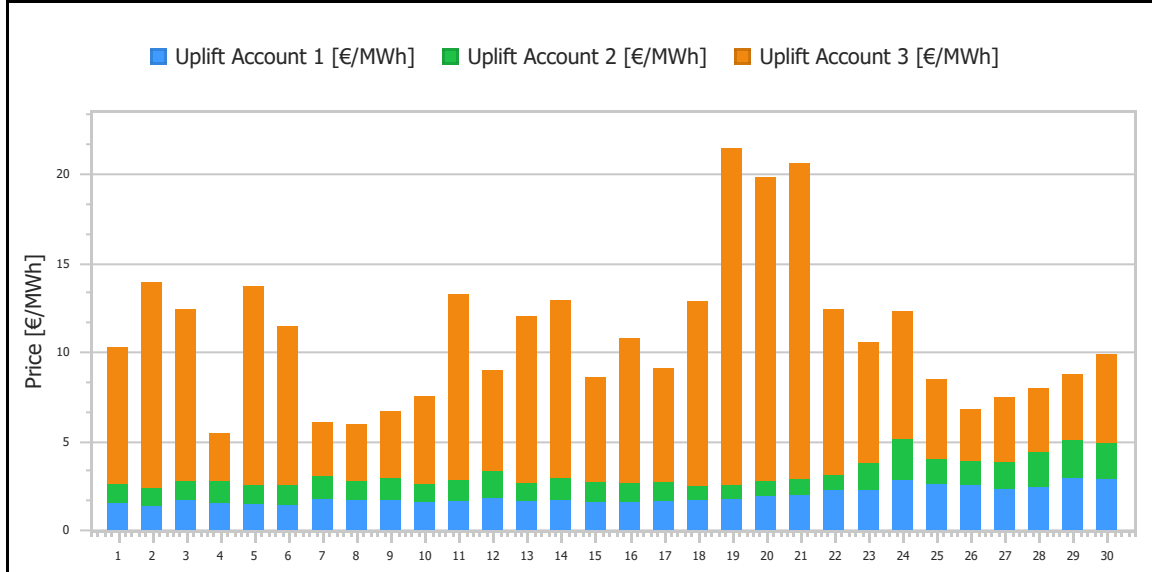




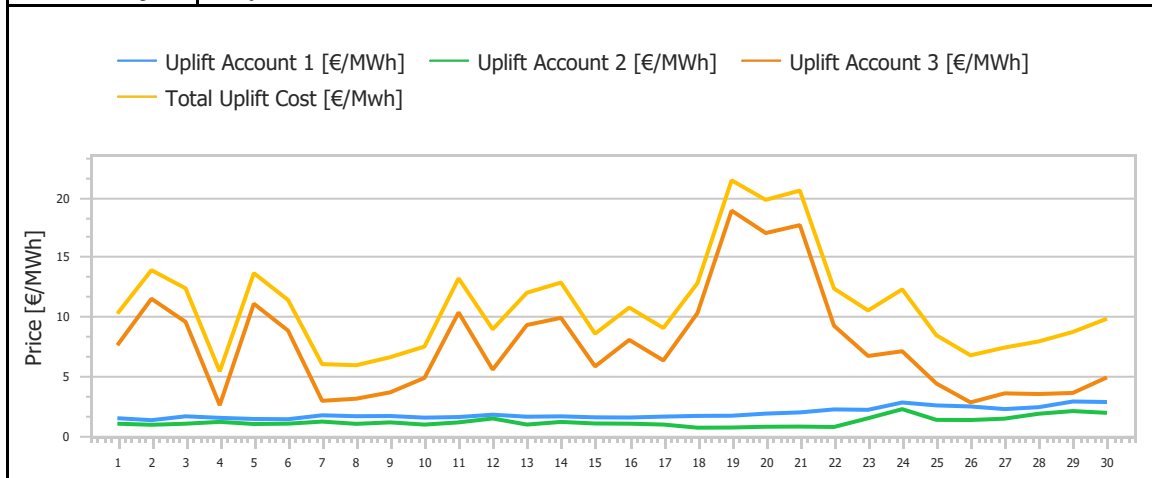
### 4. Imbalance Settlement Procedure



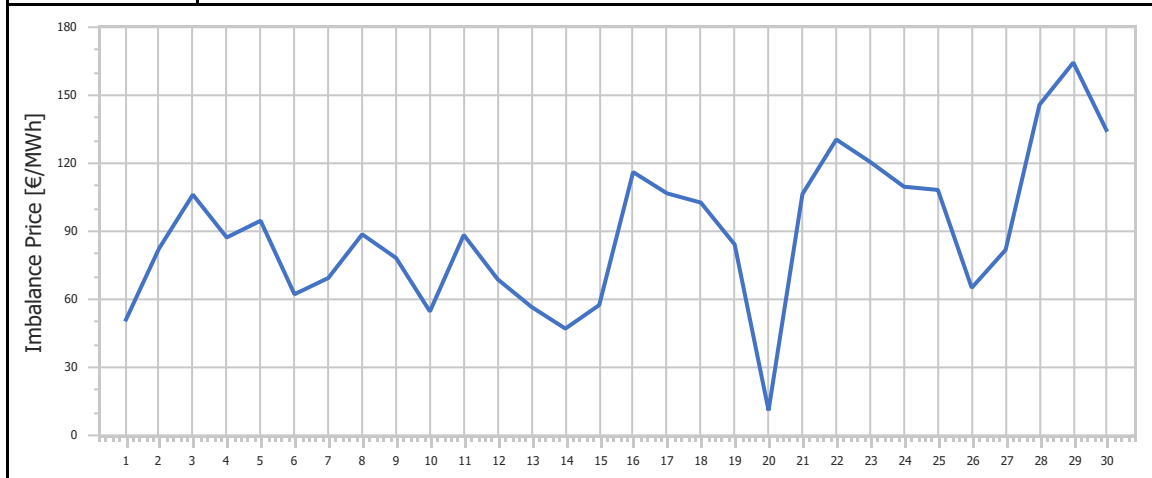
<b>Ref No</b>	Graph 4.3
<b>Title</b>	Uplift Accounts Cost
<b>Scope</b>	Imbalance Settlement Procedure
<b>Analysis</b>	Daily



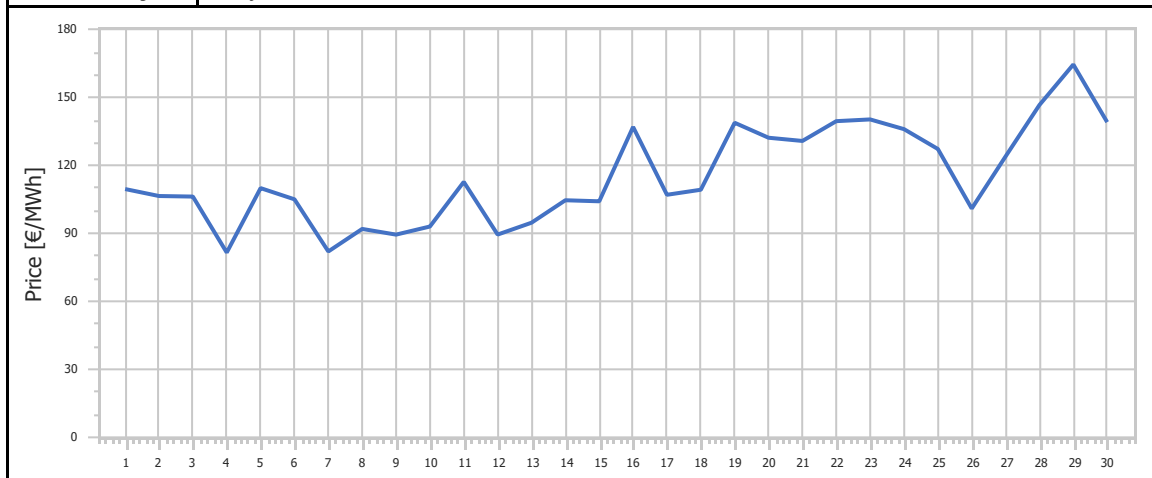
<b>Ref No</b>	Graph 4.4
<b>Title</b>	Uplift Accounts Cost
<b>Scope</b>	Imbalance Settlement Procedure
<b>Analysis</b>	Daily



<b>Ref No</b>	Graph 4.5
<b>Title</b>	Imbalance Price
<b>Scope</b>	Imbalance Settlement Procedure
<b>Analysis</b>	Daily

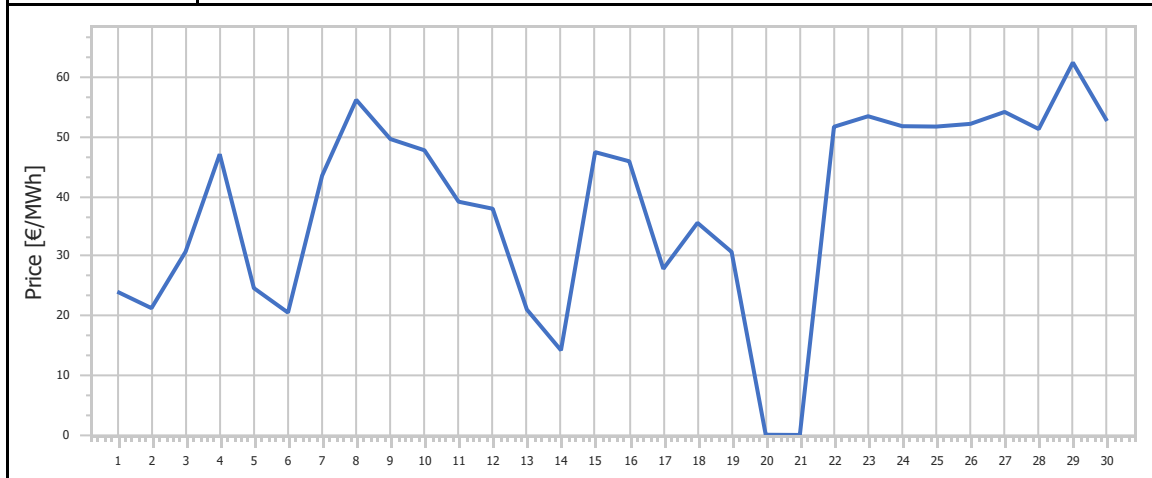


<b>Ref No</b>	Graph 4.6
<b>Title</b>	mFRR Up Price
<b>Scope</b>	Imbalance Settlement Procedure
<b>Analysis</b>	Daily

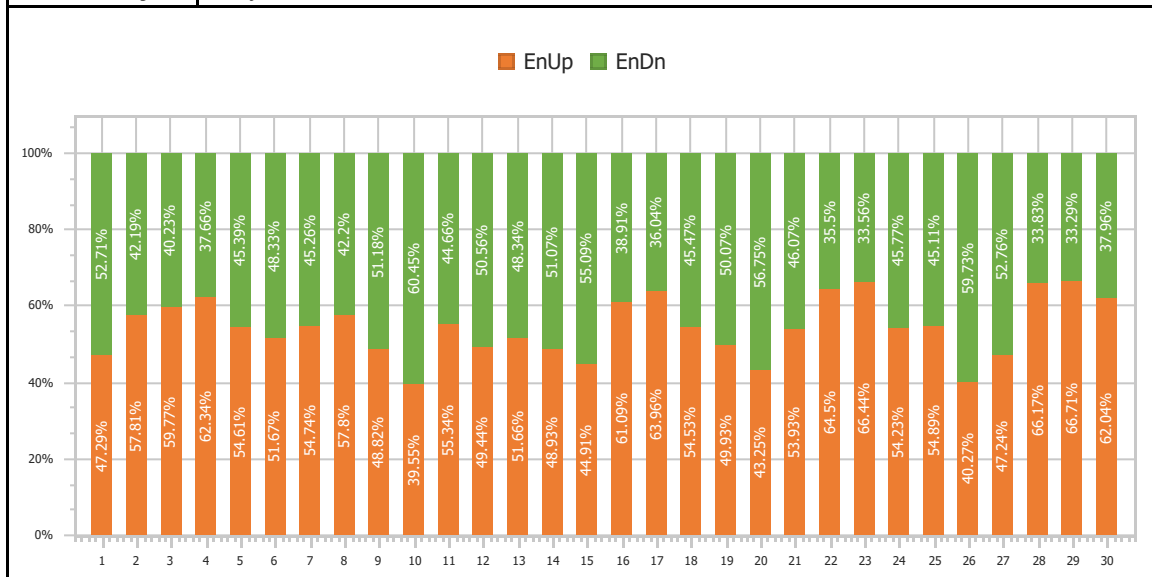




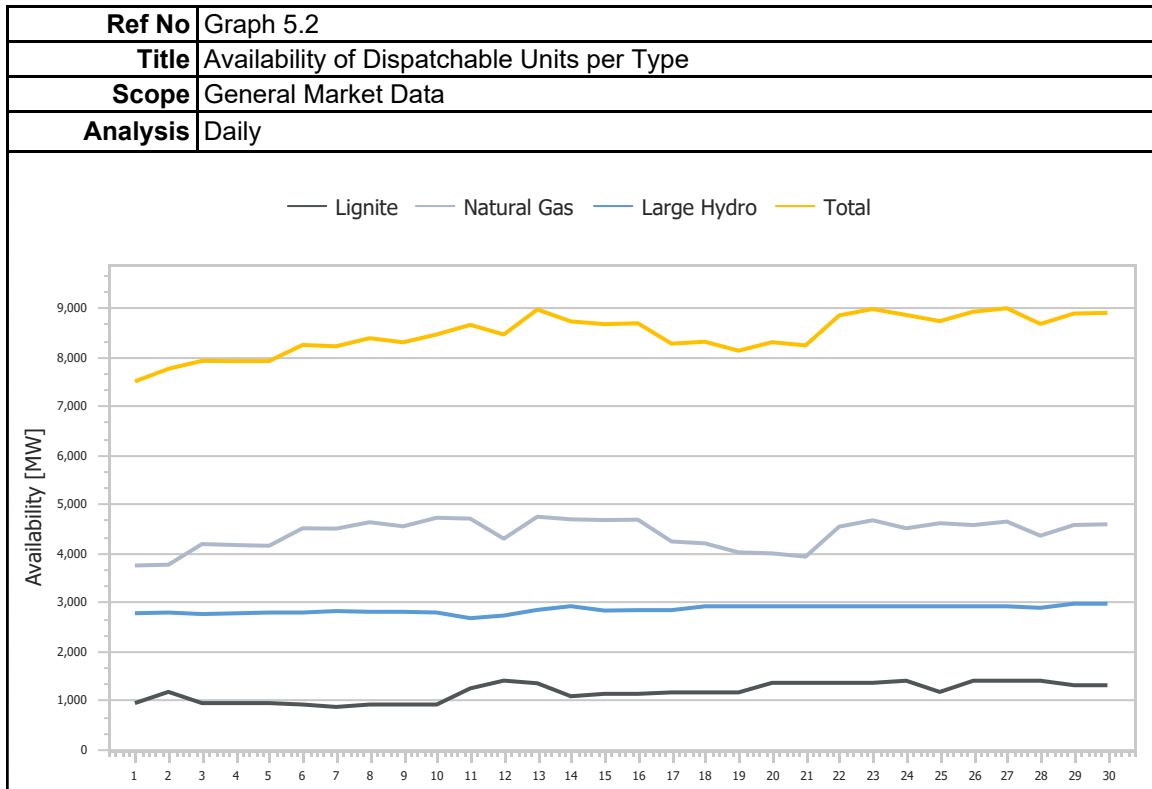
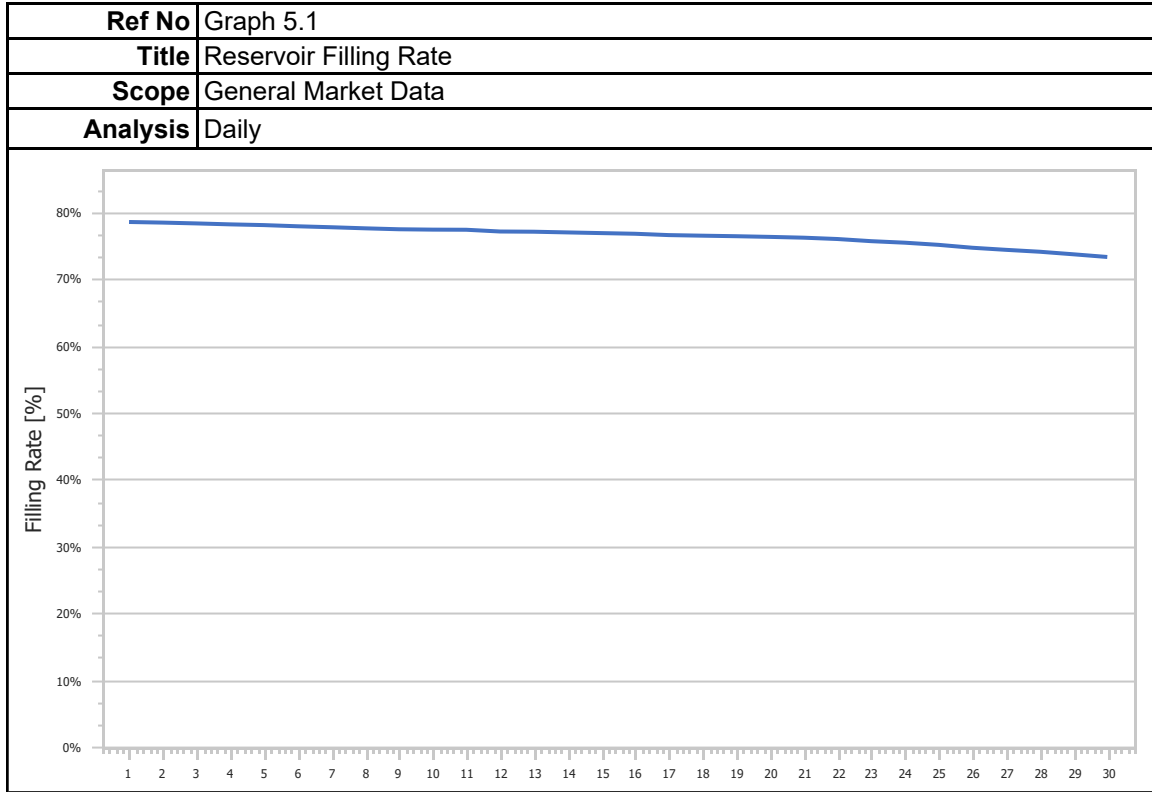
<b>Ref No</b>	Graph 4.7
<b>Title</b>	mFRR Down Price
<b>Scope</b>	Imbalance Settlement Procedure
<b>Analysis</b>	Daily



<b>Ref No</b>	Graph 4.8
<b>Title</b>	Balancing Energy Activation Direction
<b>Scope</b>	Imbalance Settlement Procedure
<b>Analysis</b>	Daily



### 5. General Market Data



## 1. Statistics

<b>Ref No</b>	Table 1.1			
<b>Title</b>	Market Shares per Aggregated Classification - SELL			
<b>Scope</b>	Day Ahead Market (DAM)			
<b>Analysis</b>	Monthly			
Classification	Quantity [MWh]	Share [%]	Value [EUR]	Share [%]
Lignite	196,497.436	4.54%	19,445,589.08€	5.19%
Crete Conventional	-	0.00%	- €	0.00%
Natural Gas	2,106,390.947	48.70%	184,678,882.20€	49.31%
Large Hydro	289,998.369	6.71%	26,181,036.84€	6.99%
RES	984,419.144	22.76%	81,759,735.50€	21.83%
Crete Renewables	-	0.00%	- €	0.00%
Imports	747,793.370	17.29%	62,443,913.92€	16.67%
<b>Total</b>	<b>4,325,099.262</b>	<b>100.00%</b>	<b>374,509,157.55€</b>	<b>100.00%</b>

<b>Ref No</b>	Table 1.2						
<b>Title</b>	Statistics per Aggregated Classification - SELL						
<b>Scope</b>	Day Ahead Market (DAM)						
<b>Analysis</b>	Monthly						
	MCP [€/MWh]	Total [MWh]	Lignite [MWh]	Natural Gas [MWh]	Hydro [MWh]	RES [MWh]	Imports [MWh]
<b>Total</b>	-	4,325,099.26	196,497.44	2,106,390.95	289,998.37	984,419.14	747,793.37
<b>Average</b>	83.47	144,169.98	8,931.70	70,213.03	9,666.61	32,813.97	24,926.45
<b>Min</b>	58.88	116,062.85	3,624.00	42,051.78	6,439.00	25,144.54	11,432.30
<b>Min day</b>	6	13	1	13	12	12	7
<b>Max</b>	128.15	187,759.61	27,078.33	93,188.29	13,198.84	43,681.76	37,221.16
<b>Max day</b>	24	30	24	29	26	14	30
<b>Spread</b>	69.27	71,696.76	23,454.33	51,136.51	6,759.84	18,537.22	25,788.86
<b>Standard Deviation</b>	16.69	21,472.51	6,827.78	14,621.23	1,666.94	4,199.95	7,639.42

<b>Ref No</b>	Table 1.3
<b>Title</b>	Market Shares per Aggregated Classification - BUY
<b>Scope</b>	Day Ahead Market (DAM)
<b>Analysis</b>	Monthly

Classification	Quantity [MWh]	Share [%]	Value [EUR]	Share [%]
System Losses	88,528.500	2.05%	7,686,078.50€	2.05%
Crete Load	-	0.00%	- €	0.00%
HV Load	606,511.389	14.02%	50,362,062.55€	13.45%
MV Load	939,569.927	21.72%	80,704,010.11€	21.55%
LV Load	2,579,502.164	59.64%	226,751,227.00€	60.55%
PUMP	4,902.922	0.11%	279,133.13€	0.07%
Exports	106,081.330	2.45%	8,726,408.33€	2.33%
<b>Total</b>	<b>4,325,096.228</b>	<b>100.00%</b>	<b>374,508,919.62€</b>	<b>100.00%</b>

<b>Ref No</b>	Table 1.4
<b>Title</b>	Statistics per Aggregated Classification - BUY
<b>Scope</b>	Day Ahead Market (DAM)
<b>Analysis</b>	Monthly

	MCP [€/MWh]	Total [MWh]	Sys Losses [MWh]	HV [MWh]	MV [MWh]	LV [MWh]	PUMP [MWh]	Exports [MWh]
<b>Total</b>	-	4,325,096.23	88,528.50	606,511.39	939,569.93	2,579,502.16	4,902.92	106,081.33
<b>Average</b>	83.47	144,169.87	2,950.95	20,217.05	31,319.00	85,983.41	544.77	3,536.04
<b>Min</b>	58.88	116,062.85	2,191.50	19,104.38	21,558.53	69,351.96	46.90	606.69
<b>Min day</b>	6	13	6	1	13	13	13	30
<b>Max</b>	128.15	187,759.64	4,043.50	22,036.25	41,665.98	121,746.96	1,380.00	10,574.93
<b>Max day</b>	24	30	29	12	30	30	6	7
<b>Spread</b>	69.27	71,696.79	1,852.00	2,931.86	20,107.46	52,394.99	1,333.10	9,968.24
<b>Standard Deviation</b>	16.69	21,472.52	569.43	760.17	4,822.59	18,537.44	376.74	2,549.30

## 2. Market Shares

<b>Ref No</b>	Table 2.1.1			
<b>Title</b>	Market Shares - Upward Capacity Reserves Volumes per Type			
<b>Scope</b>	Balancing Market (BM)			
<b>Analysis</b>	Monthly			
Type	Quantity [MW]	Share [%]	Value [EUR]	Share [%]
aFRR	1,503,186.880	62.29%	3,408,724.22€	74.92%
FCR	97,963.650	4.06%	119,905.71€	2.64%
mFRR	812,108.870	33.65%	1,021,244.47€	22.45%
<b>Total</b>	<b>2,413,259.400</b>	<b>100.00%</b>	<b>4,549,874.40€</b>	<b>100.00%</b>

<b>Ref No</b>	Table 2.1.2			
<b>Title</b>	Market Shares - Downward Capacity Reserves per Type			
<b>Scope</b>	Balancing Market(BM)			
<b>Analysis</b>	Monthly			
Type	Quantity [MW]	Share [%]	Value [EUR]	Share [%]
aFRR	336,244.310	35.43%	447,324.57€	43.71%
FCR	131,257.960	13.83%	131,519.13€	12.85%
mFRR	481,604.320	50.74%	444,544.52€	43.44%
<b>Total</b>	<b>949,106.580</b>	<b>100.00%</b>	<b>1,023,388.21€</b>	<b>100.00%</b>

<b>Ref No</b>	Table 2.1.3			
<b>Title</b>	Market Shares - Upward Activated Balancing Energy per Type			
<b>Scope</b>	Balancing Market (BM)			
<b>Analysis</b>	Monthly			
Type	Quantity [MWh]	Share [%]	Value [EUR]	Share [%]
aFRR	130,008.600	27.04%	16,212,430.30€	27.83%
mFRR	350,850.380	72.96%	42,040,236.36€	72.17%
<b>Total</b>	<b>480,858.990</b>	<b>100.00%</b>	<b>58,252,666.66€</b>	<b>100.00%</b>

<b>Ref No</b>	Table 2.1.4			
<b>Title</b>	Market Shares - Downward Activated Balancing Energy per Type			
<b>Scope</b>	Balancing Market (BM)			
<b>Analysis</b>	Monthly			
Type	Quantity [MWh]	Share [%]	Value [EUR]	Share [%]
aFRR	108,255.120	26.89%	3,566,093.04€	27.96%
mFRR	294,330.620	73.11%	9,187,482.13€	72.04%
<b>Total</b>	<b>402,585.740</b>	<b>100.00%</b>	<b>12,753,575.17€</b>	<b>100.00%</b>

### 3. Market Overview

<b>Ref No</b>	Table 3.1
<b>Title</b>	Total Transactions Quantity per Market
<b>Scope</b>	DAM, IDM, Balancing Energy Market
<b>Analysis</b>	Monthly

Market	Quantity [MWh]	Share [%]
DAM	4,325,099.26	96.26%
IDMA1	42,449.13	0.94%
IDMA2	31,510.55	0.70%
IDMA3	15,578.41	0.35%
IDM (Total)	89,538.10	1.99%
Balancing Energy (Up)	480,858.99	10.70%
Balancing Energy (Dn)	402,585.74	8.96%
Balancing Energy (Total)	78,273.25	1.74%
<b>Total</b>	<b>4,492,910.60</b>	<b>100.00%</b>

<b>Ref No</b>	Table 3.2
<b>Title</b>	Total Transactions Value per Market
<b>Scope</b>	DAM, IDM, Balancing Energy Market
<b>Analysis</b>	Monthly

Market	Value [EUR]	Share [%]
DAM	374,509,157.55€	86.32%
IDMA1	3,963,074.14€	0.91%
IDMA2	2,773,418.76€	0.64%
IDMA3	1,553,020.98€	0.36%
IDM (Total)	8,289,513.88€	1.91%
Balancing Capacity (Up)	4,549,874.40€	1.05%
Balancing Capacity (Dn)	1,023,388.21€	0.24%
Balancing Capacity (Total)	5,573,262.61€	1.28%
Balancing Energy (Up)	58,252,666.66€	13.43%
Balancing Energy (Dn)	12,753,575.17€	2.94%
Balancing Energy (Total)	45,499,091.49€	10.49%
Balancing Market (Total)	51,072,354.10€	11.77%
<b>Total</b>	<b>433,871,025.53€</b>	<b>100.00%</b>