

# Market Monitoring Report

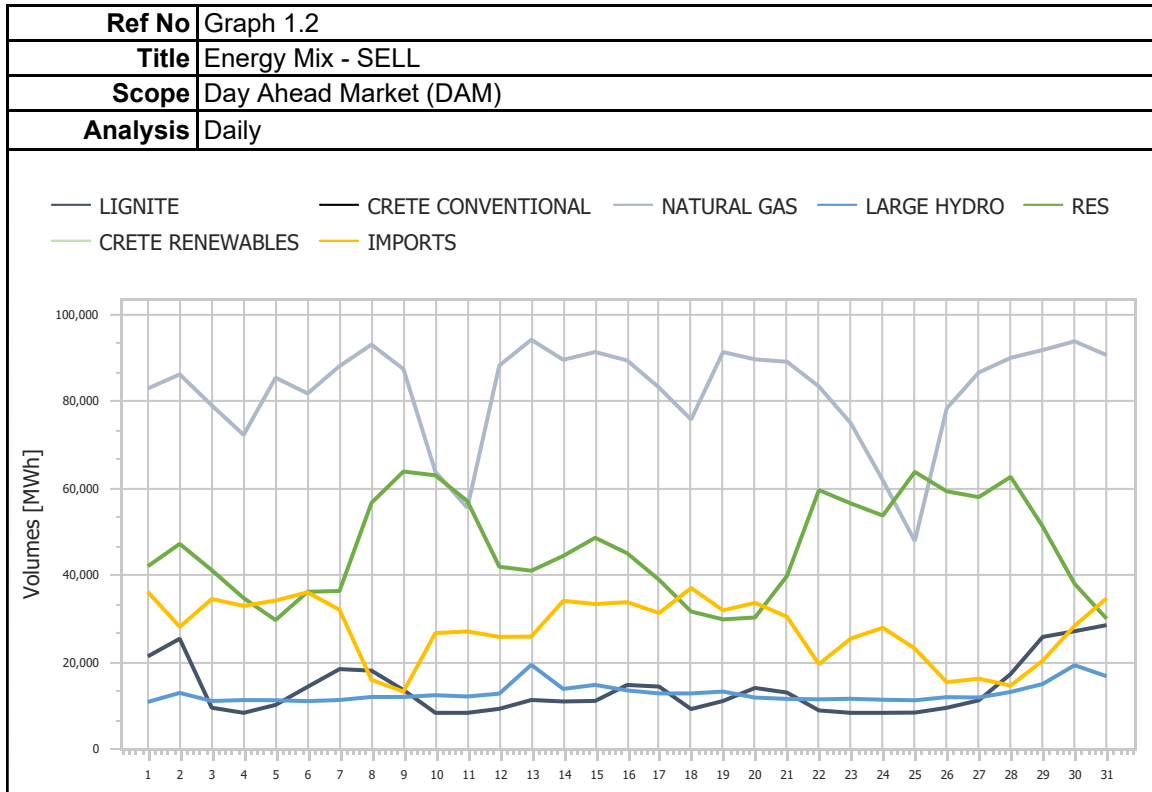
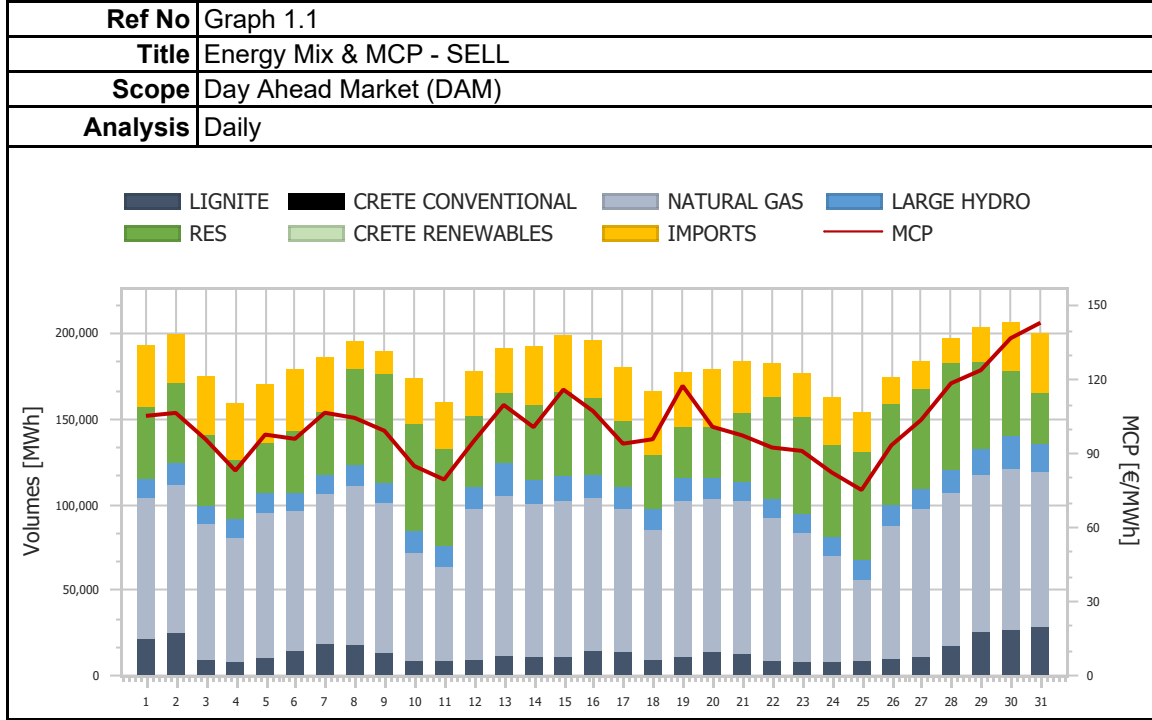
Monthly - Public - 2

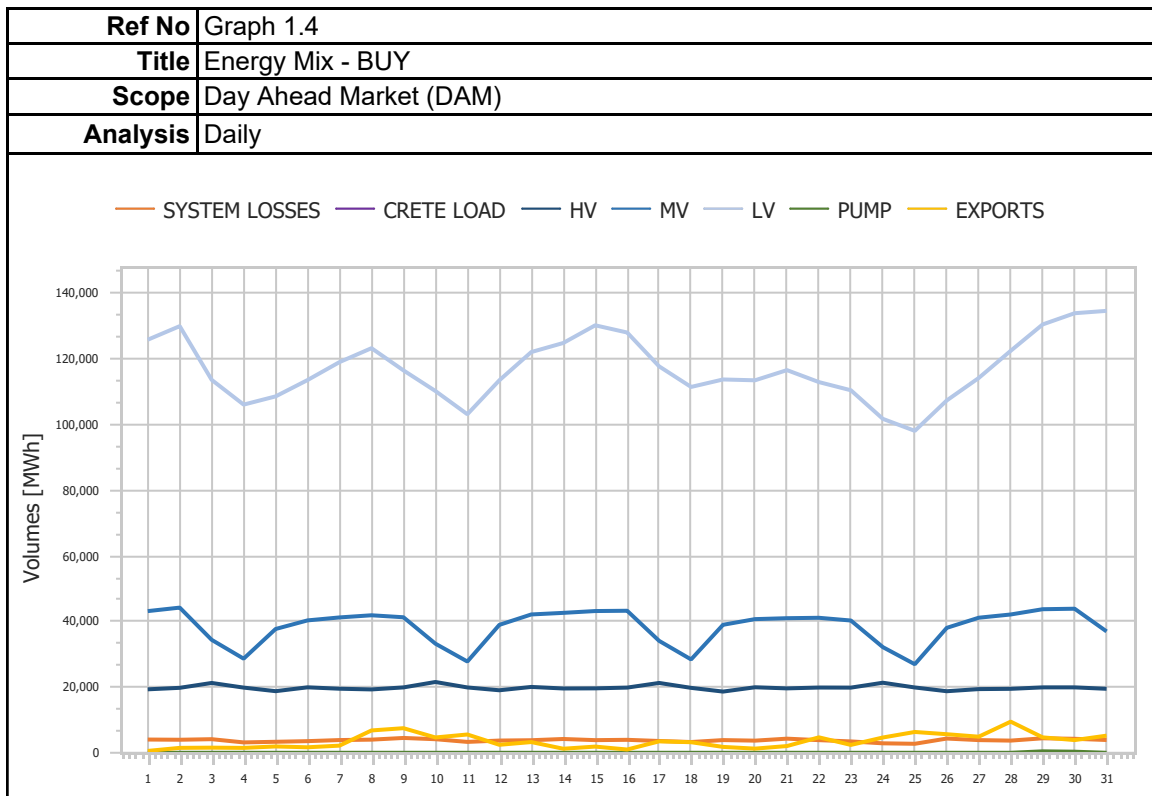
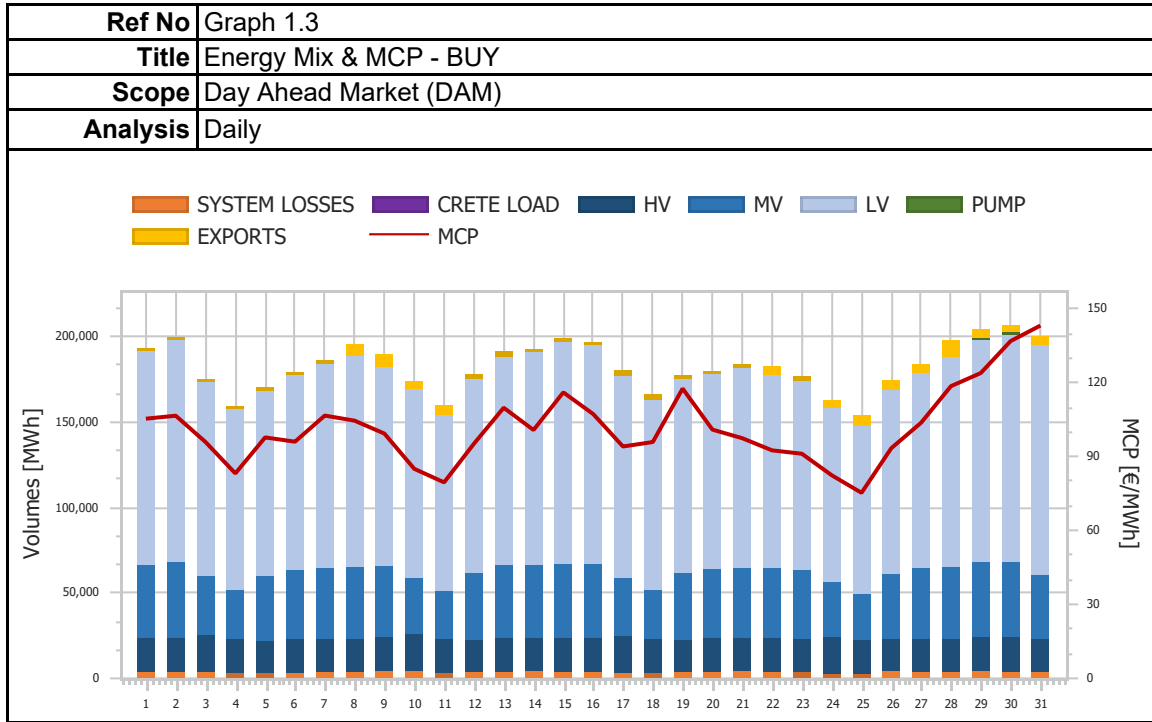
*07-2021*



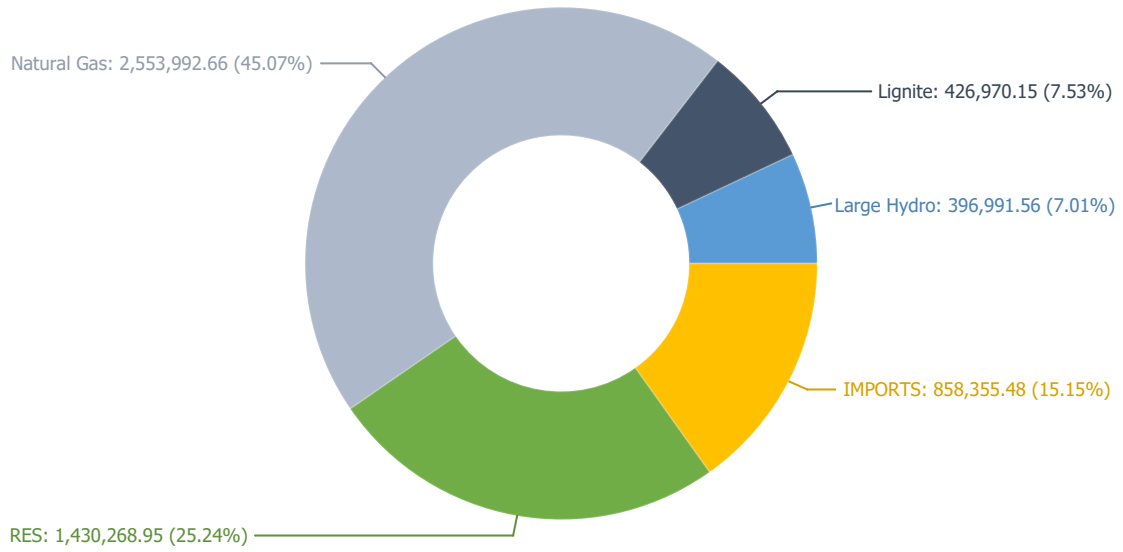
ΡΥΘΜΙΣΤΙΚΗ ΑΡΧΗ ΕΝΕΡΓΕΙΑΣ  
REGULATORY AUTHORITY FOR ENERGY

# 1. Day Ahead Market (DAM)

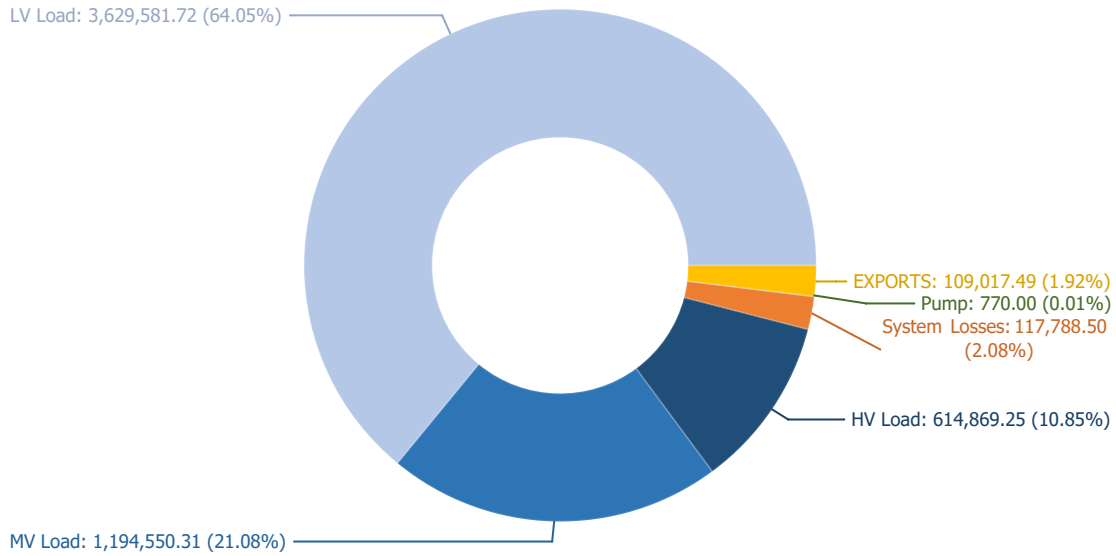




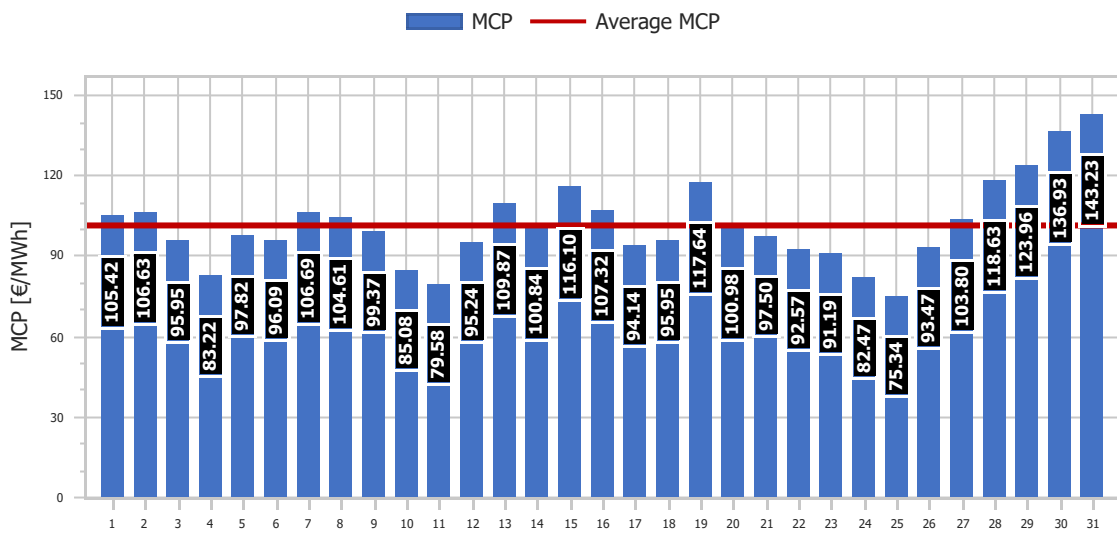
<b>Ref No</b>	Graph 1.5
<b>Title</b>	Energy Mix - SELL
<b>Scope</b>	Day Ahead Market (DAM)
<b>Analysis</b>	Daily



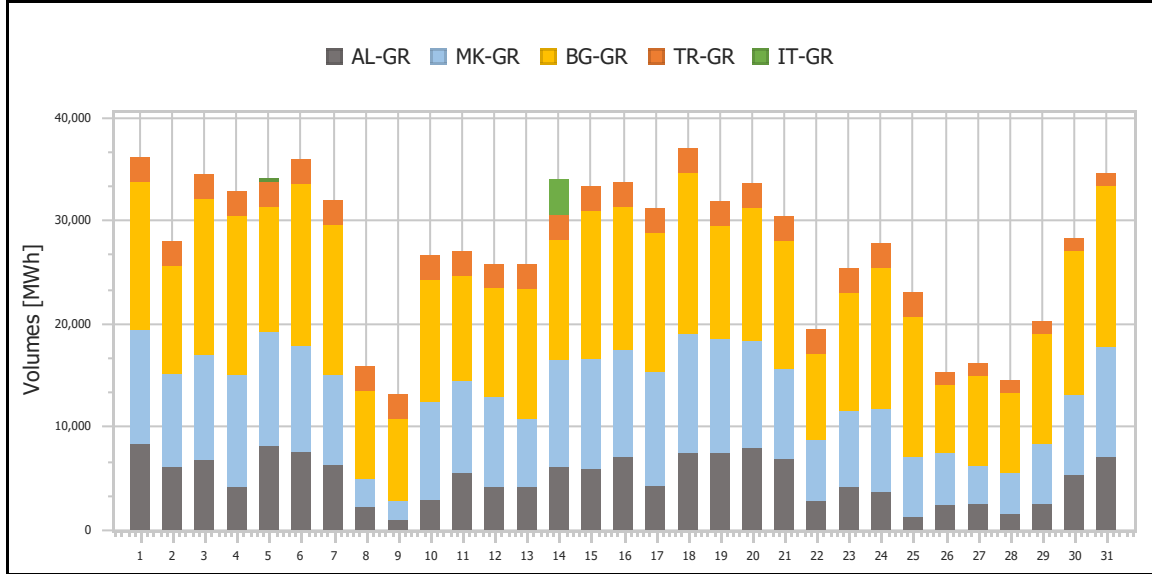
<b>Ref No</b>	Graph 1.6
<b>Title</b>	Energy Mix - BUY
<b>Scope</b>	Day Ahead Market (DAM)
<b>Analysis</b>	Daily



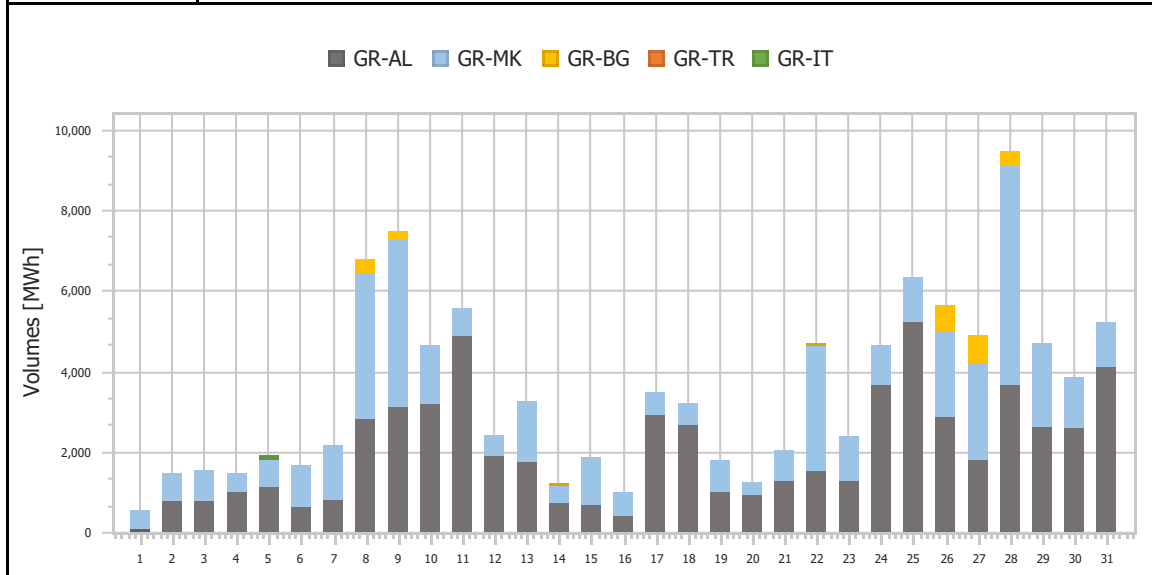
<b>Ref No</b>	Graph 1.7
<b>Title</b>	Market Clearing Price (MCP)
<b>Scope</b>	Day Ahead Market (DAM)
<b>Analysis</b>	Daily



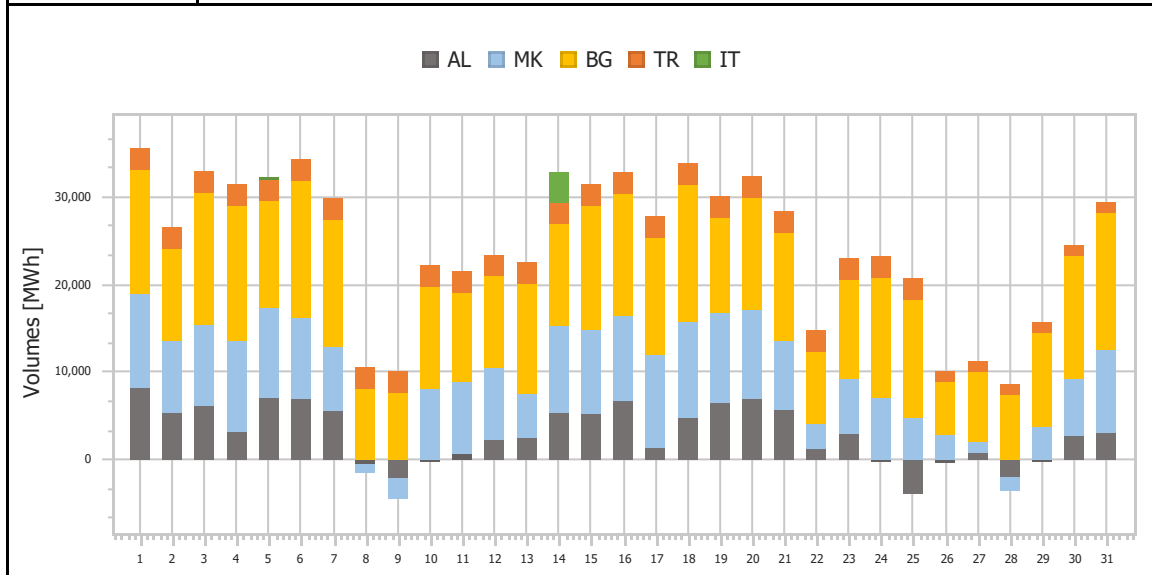
<b>Ref No</b>	Graph 1.8
<b>Title</b>	Imports per Border
<b>Scope</b>	Day Ahead Market (DAM)
<b>Analysis</b>	Daily



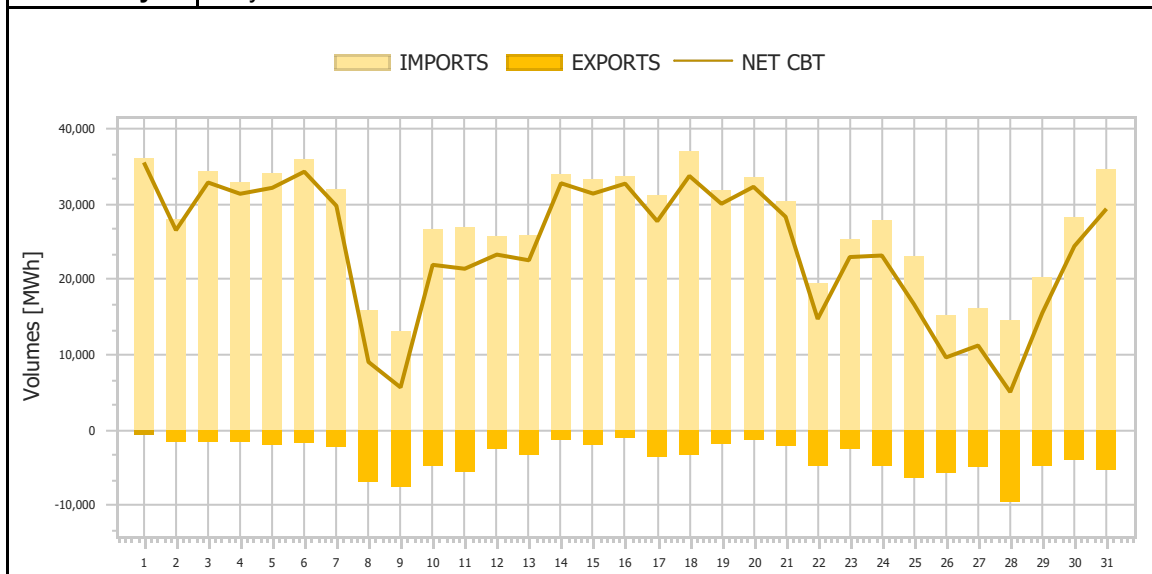
<b>Ref No</b>	Graph 1.9
<b>Title</b>	Exports per Border
<b>Scope</b>	Day Ahead Market (DAM)
<b>Analysis</b>	Daily



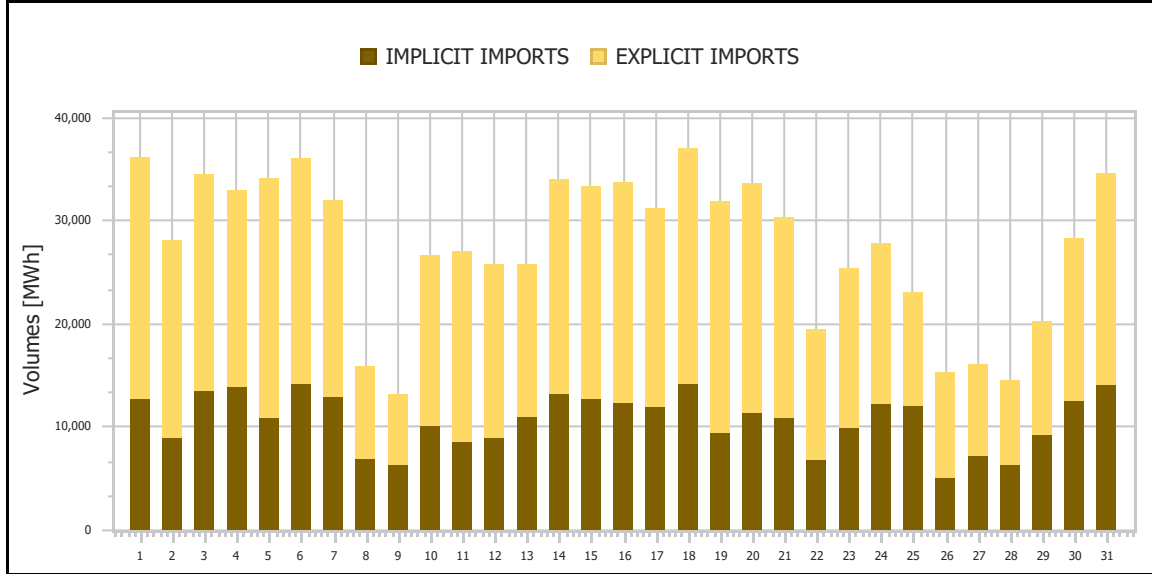
<b>Ref No</b>	Graph 1.10
<b>Title</b>	Net Imports per Border
<b>Scope</b>	Day Ahead Market (DAM)
<b>Analysis</b>	Daily



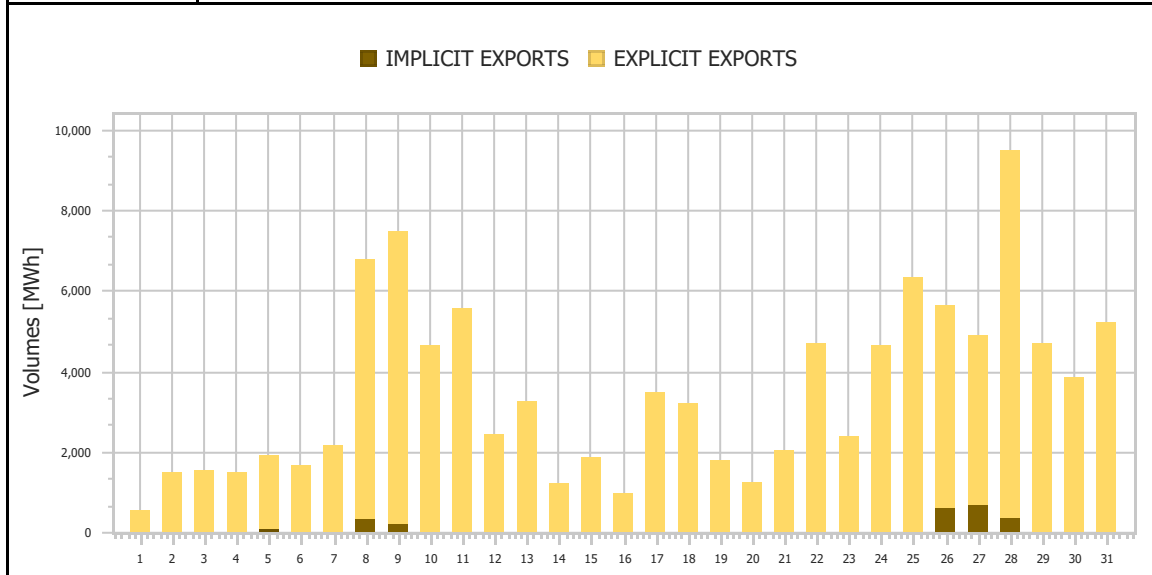
<b>Ref No</b>	Graph 1.11
<b>Title</b>	Total Imports & Exports
<b>Scope</b>	Day Ahead Market (DAM)
<b>Analysis</b>	Daily



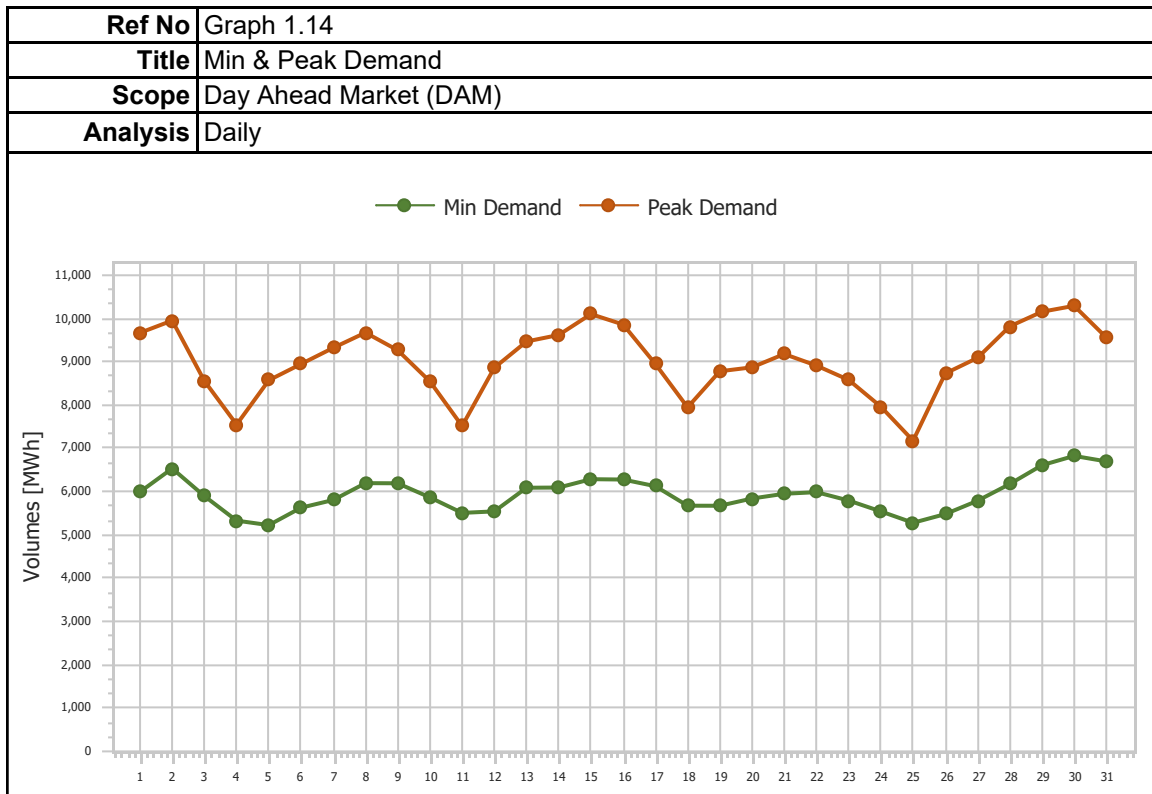
<b>Ref No</b>	Graph 1.12
<b>Title</b>	Imports (Implicit/Explicit)
<b>Scope</b>	Day Ahead Market (DAM)
<b>Analysis</b>	Daily



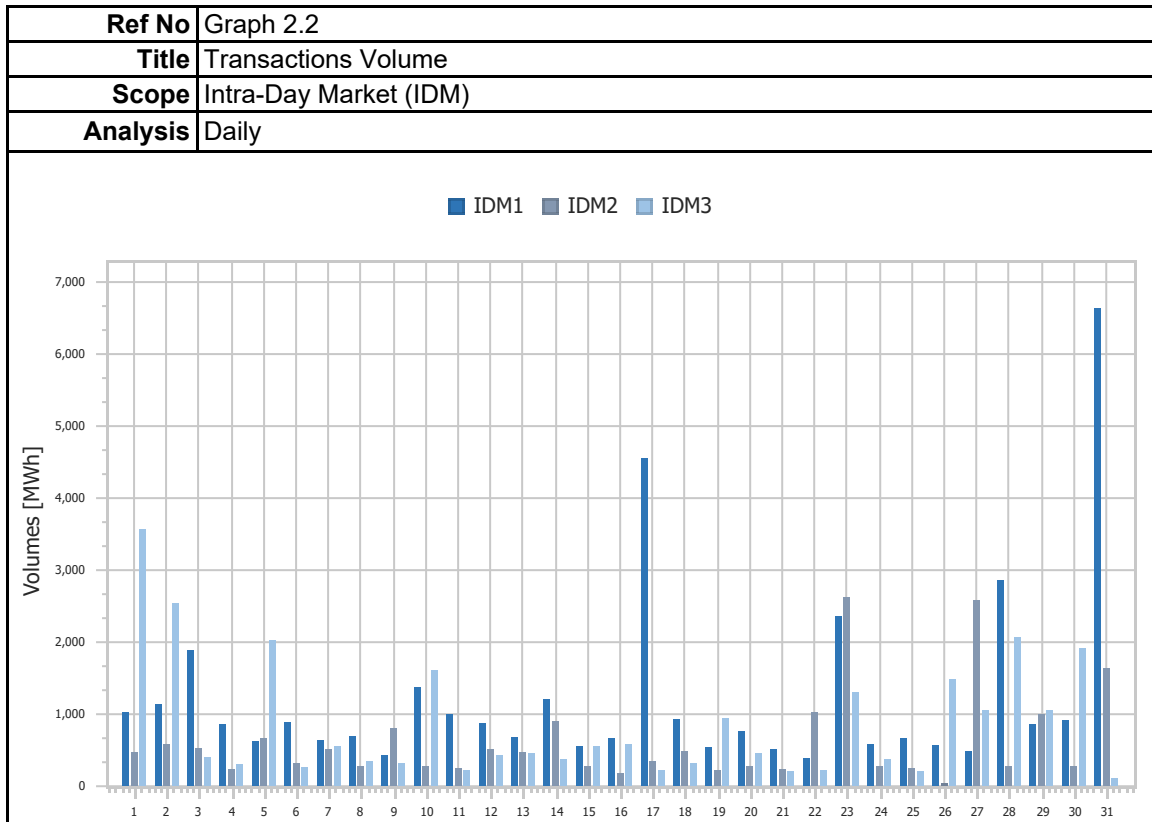
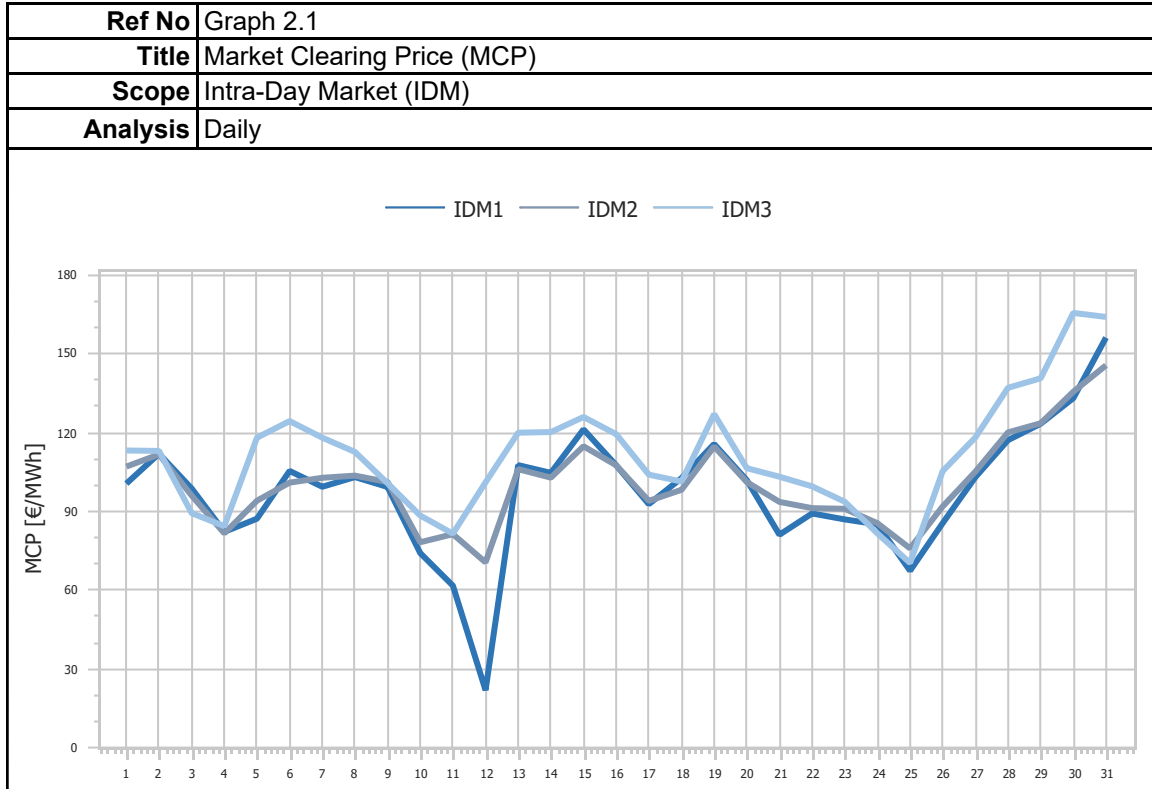
<b>Ref No</b>	Graph 1.13
<b>Title</b>	Exports (Implicit/Explicit)
<b>Scope</b>	Day Ahead Market (DAM)
<b>Analysis</b>	Monthly

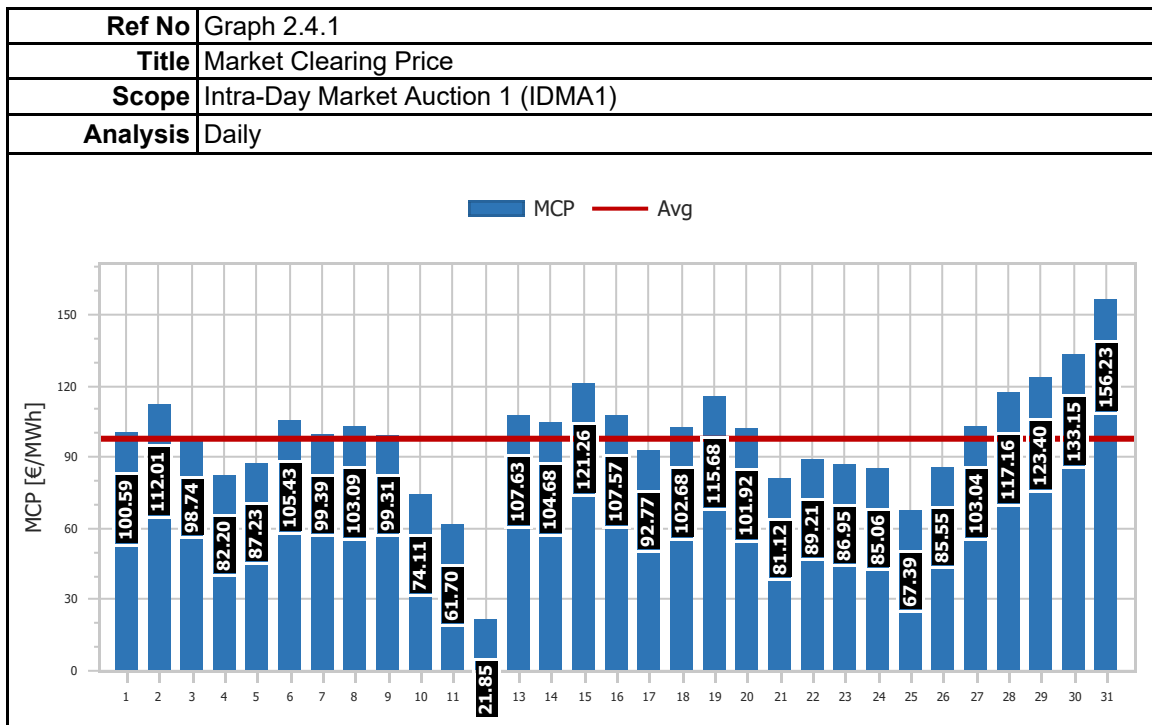
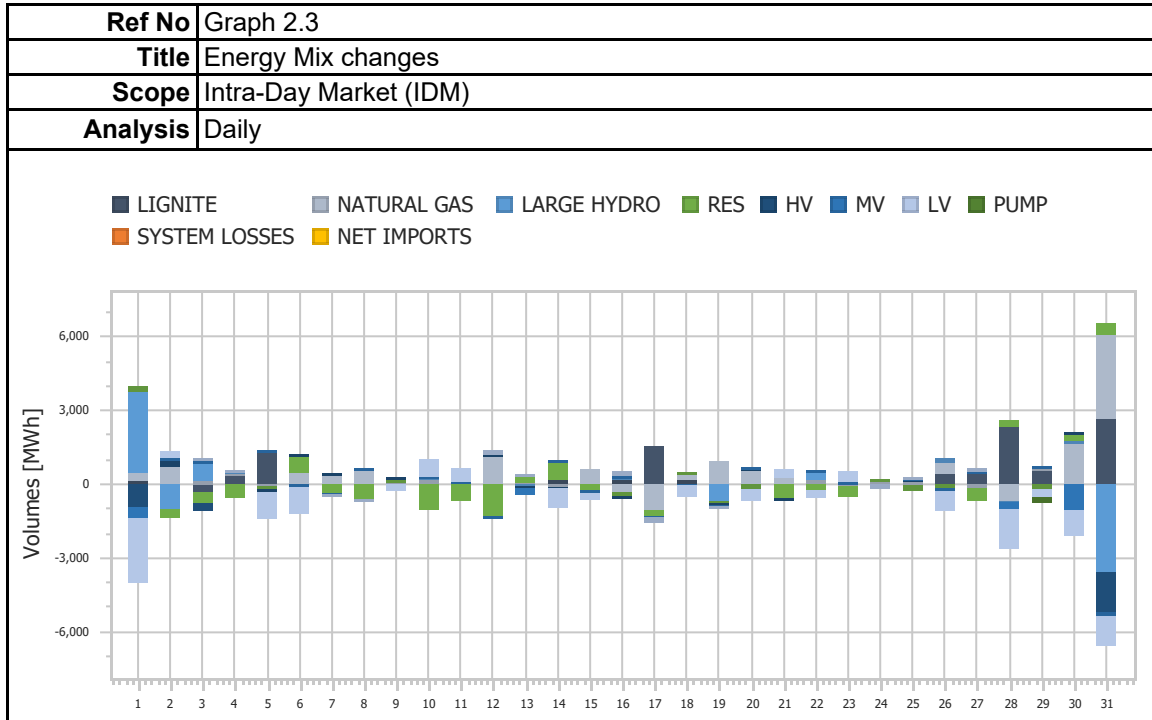




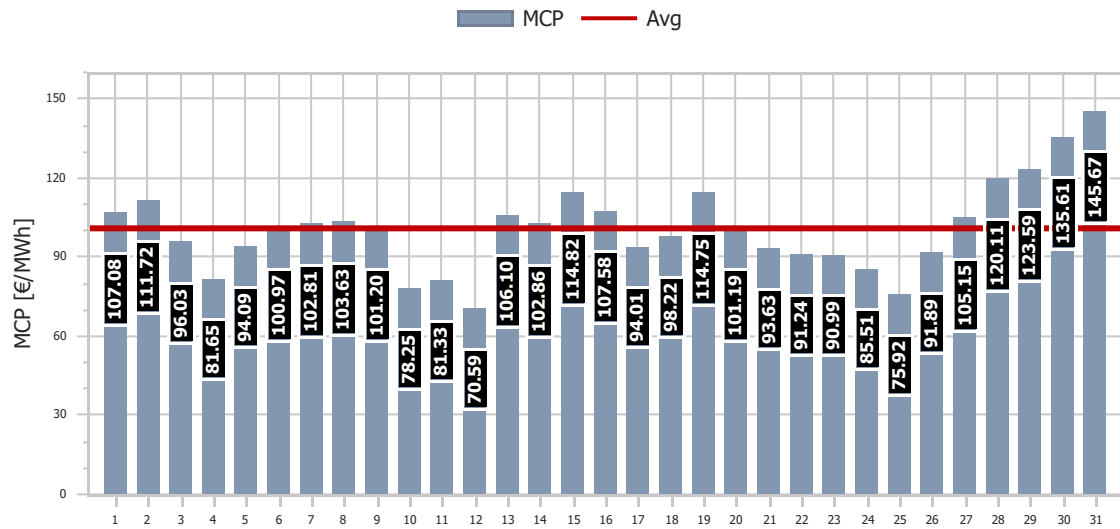


## 2. Intra-Day Market (IDM)

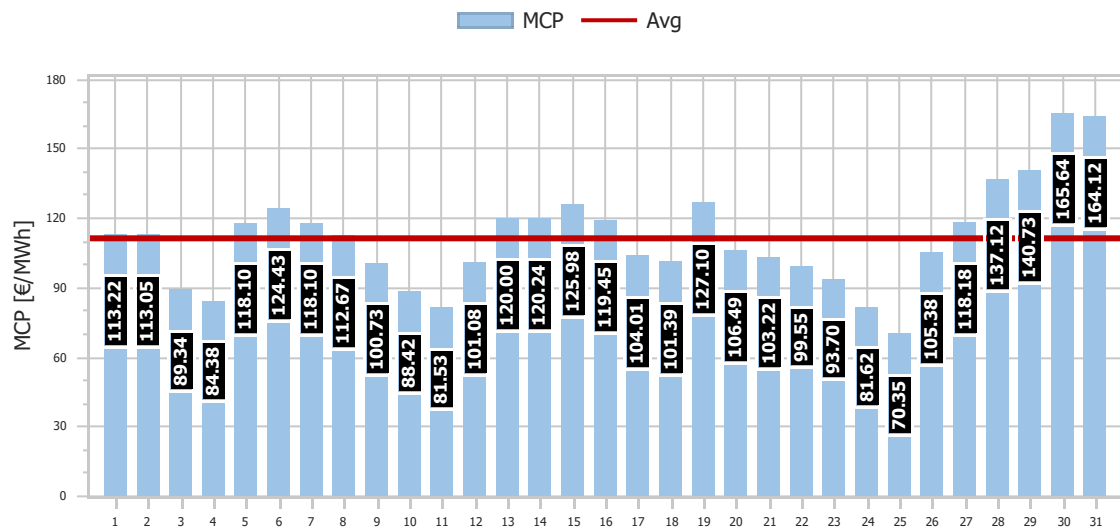




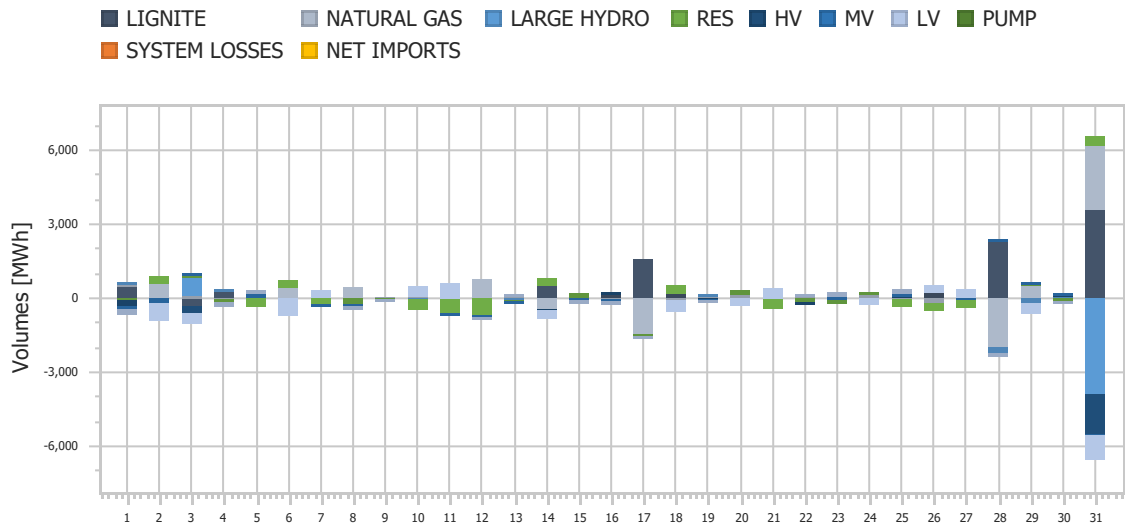
<b>Ref No</b>	Graph 2.4.2
<b>Title</b>	Market Clearing Price
<b>Scope</b>	Intra-Day Market Auction 2 (IDMA2)
<b>Analysis</b>	Daily



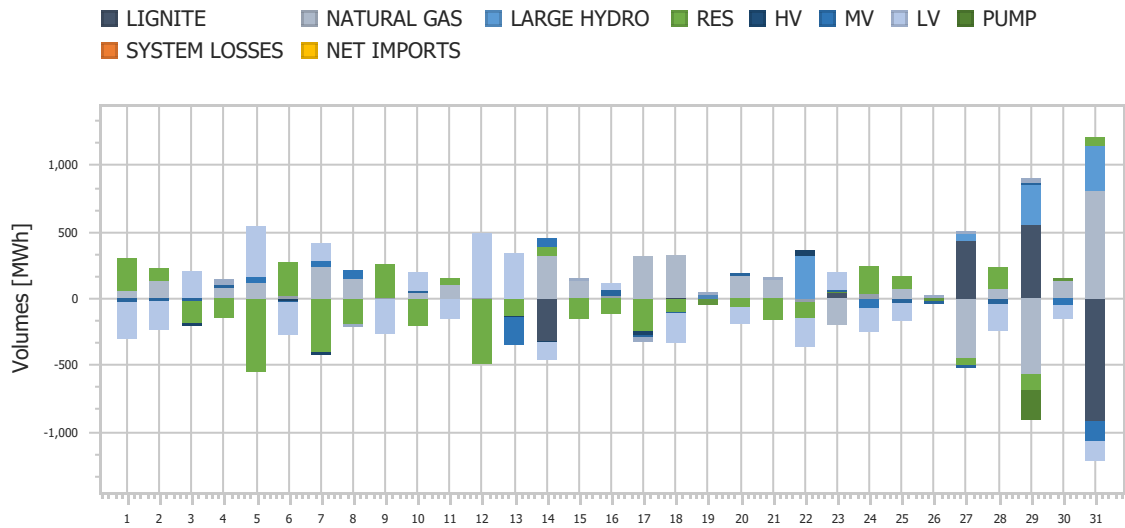
<b>Ref No</b>	Graph 2.4.3
<b>Title</b>	Market Clearing Price
<b>Scope</b>	Intra-Day Market Auction 3 (IDMA3)
<b>Analysis</b>	Daily



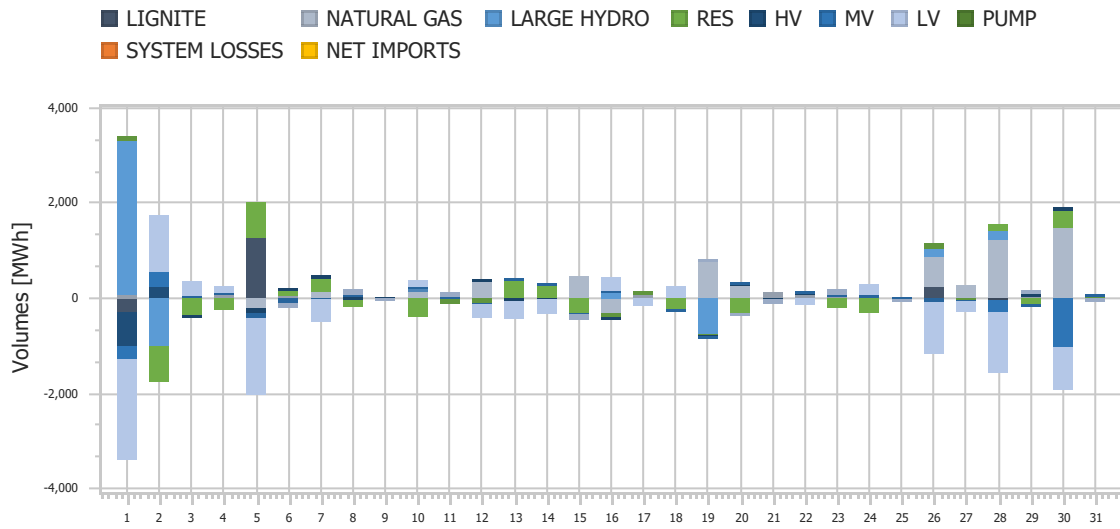
<b>Ref No</b>	Graph 2.5.1
<b>Title</b>	IDM Energy Mix Changes
<b>Scope</b>	Intra-Day Market Auction 1 (IDMA1)
<b>Analysis</b>	Daily



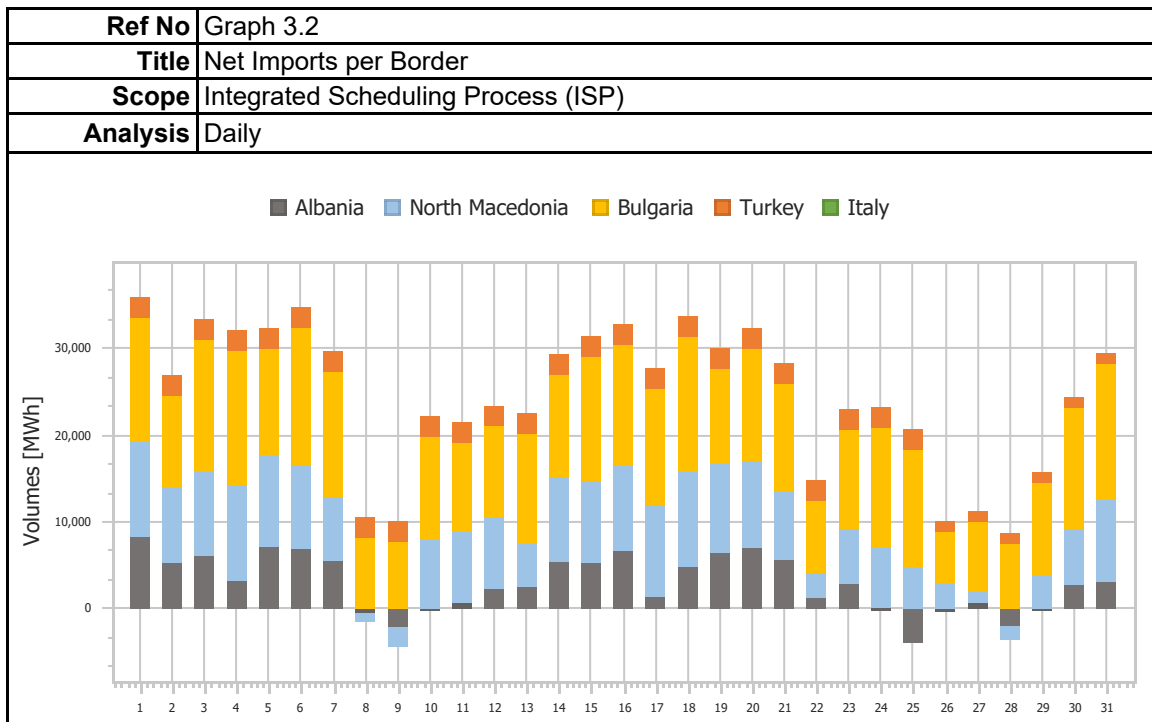
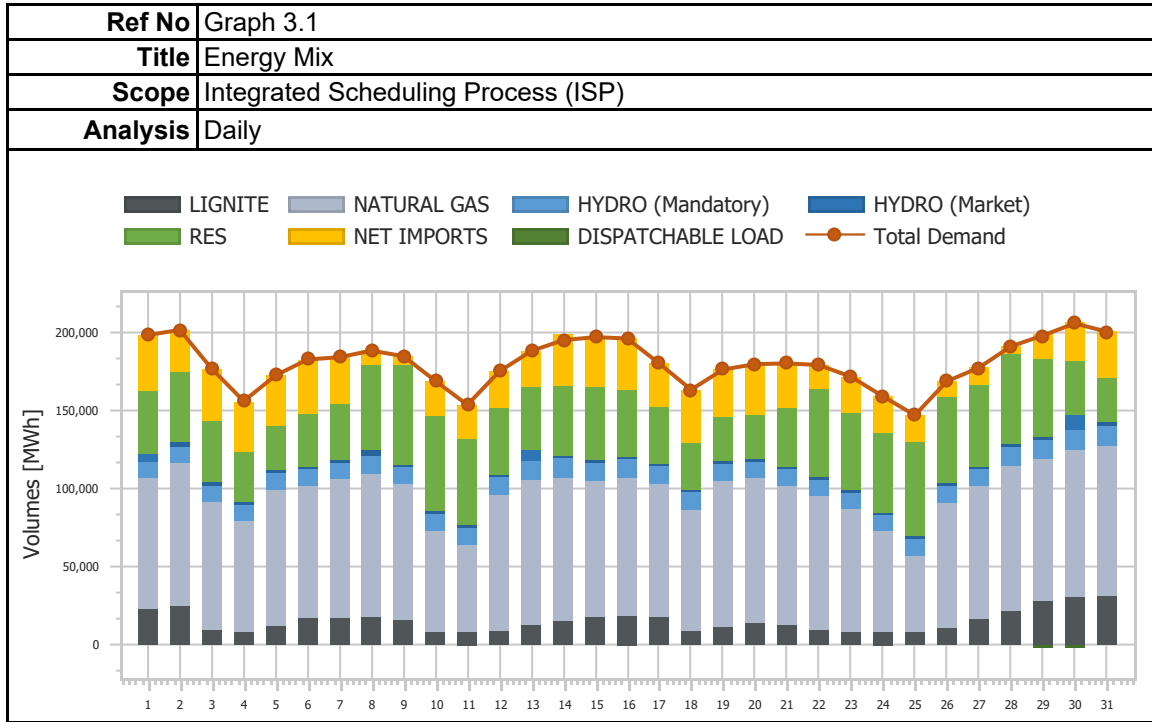
<b>Ref No</b>	Graph 2.5.2
<b>Title</b>	IDM Energy Mix Changes
<b>Scope</b>	Intra-Day Market Auction 2 (IDMA2)
<b>Analysis</b>	Daily



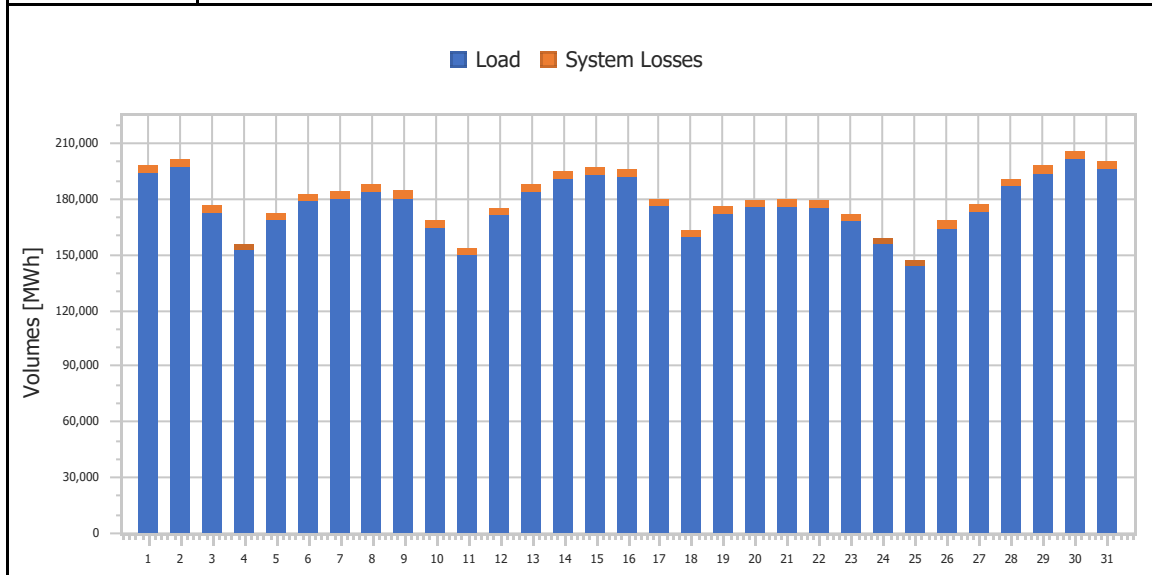
<b>Ref No</b>	Graph 2.5.3
<b>Title</b>	IDM Energy Mix Changes
<b>Scope</b>	Intra-Day Market Auction 3 (IDMA3)
<b>Analysis</b>	Daily



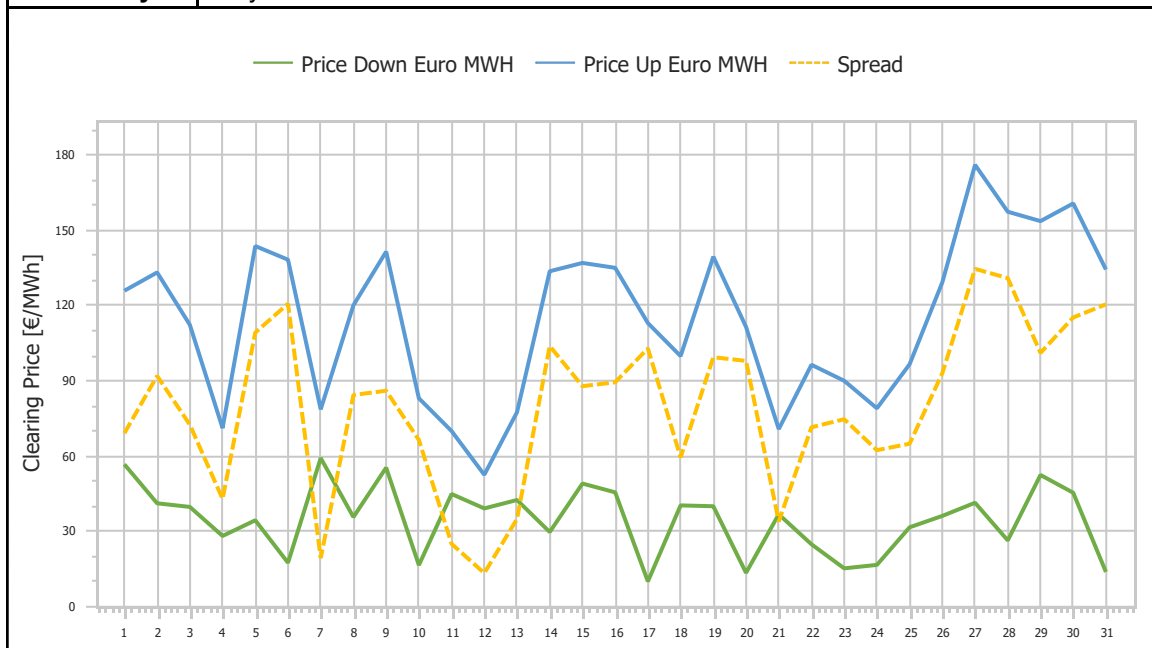
### 3. Integrated Scheduling Process (ISP)



<b>Ref No</b>	Graph 3.3
<b>Title</b>	Demand & System Losses
<b>Scope</b>	Integrated Scheduling Process (ISP)
<b>Analysis</b>	Daily

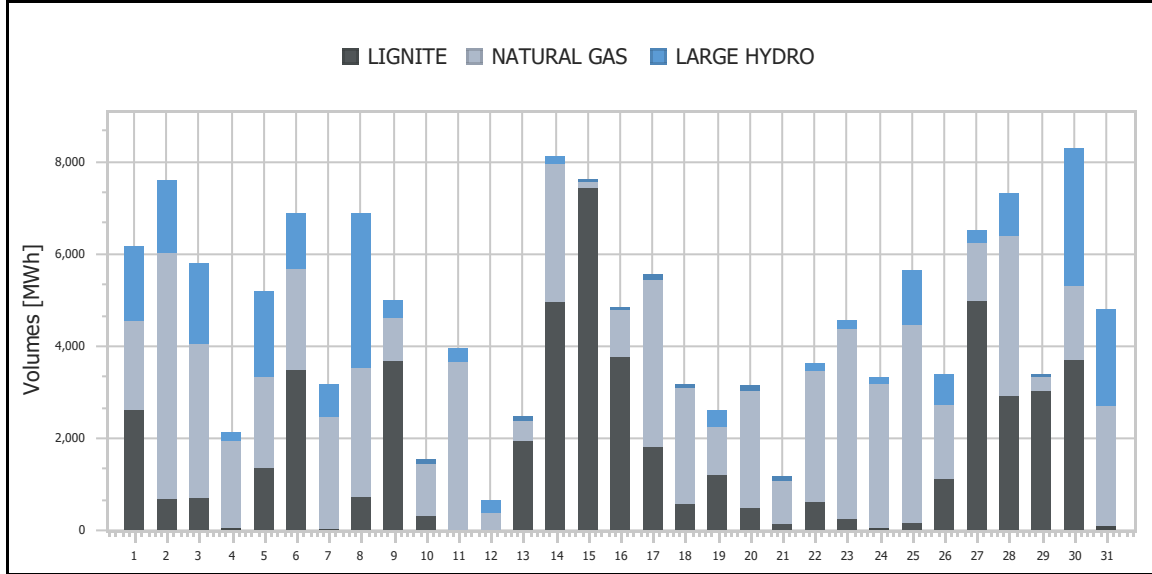


<b>Ref No</b>	Graph 3.4
<b>Title</b>	Clearing Prices
<b>Scope</b>	Integrated Scheduling Process (ISP)
<b>Analysis</b>	Daily

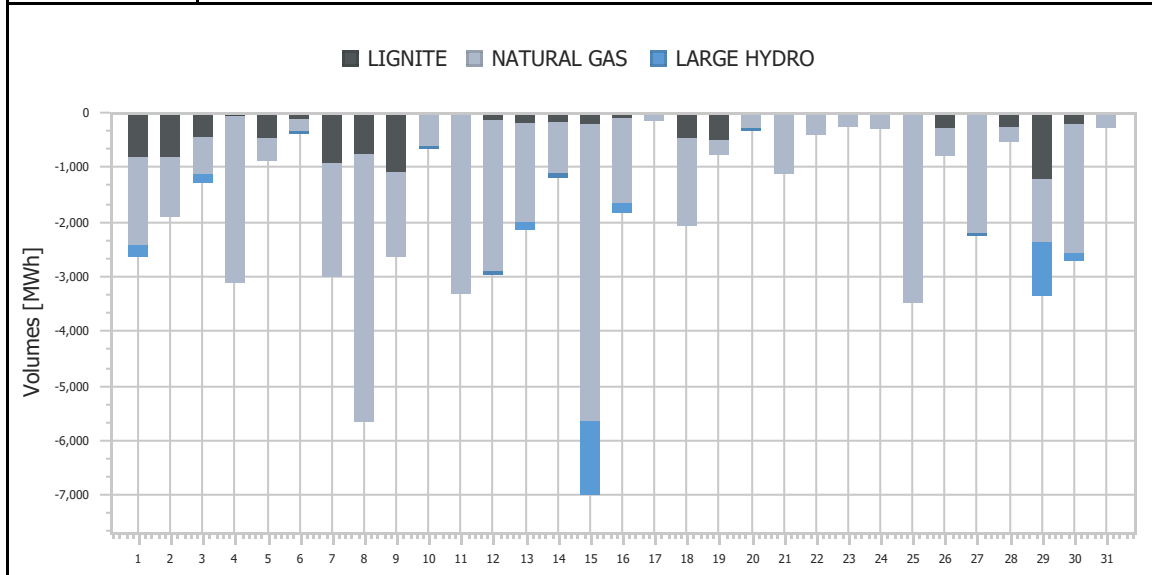




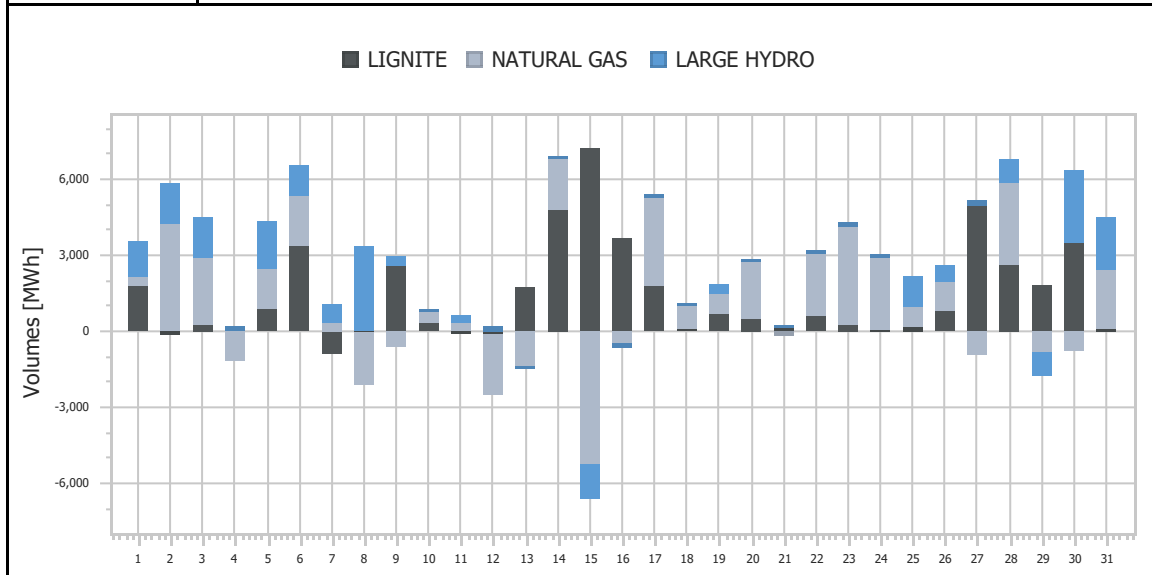
<b>Ref No</b>	Graph 3.5
<b>Title</b>	Upward Activated Balancing energy
<b>Scope</b>	Integrated Scheduling Process (ISP)
<b>Analysis</b>	Daily



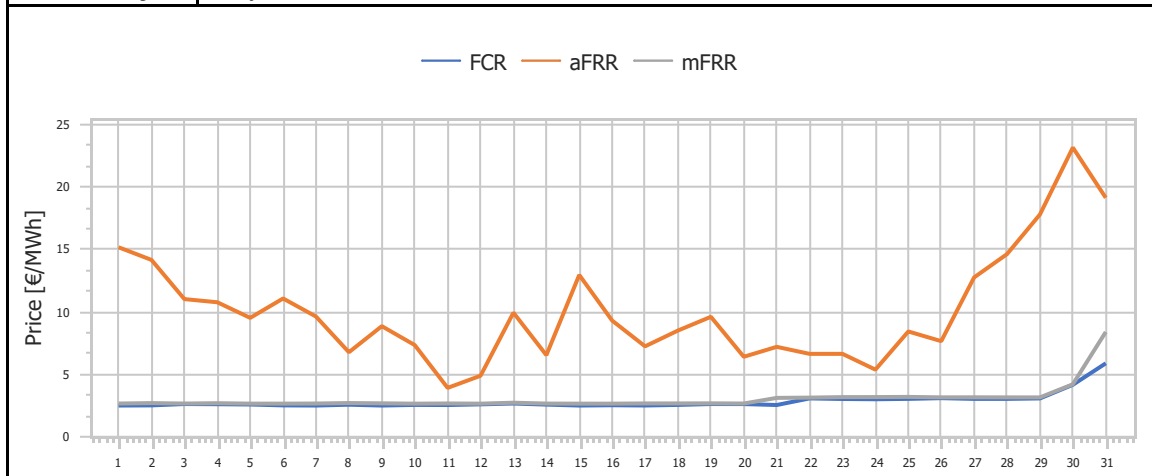
<b>Ref No</b>	Graph 3.6
<b>Title</b>	Downward Activated Balancing energy
<b>Scope</b>	Integrated Scheduling Process (ISP)
<b>Analysis</b>	Daily



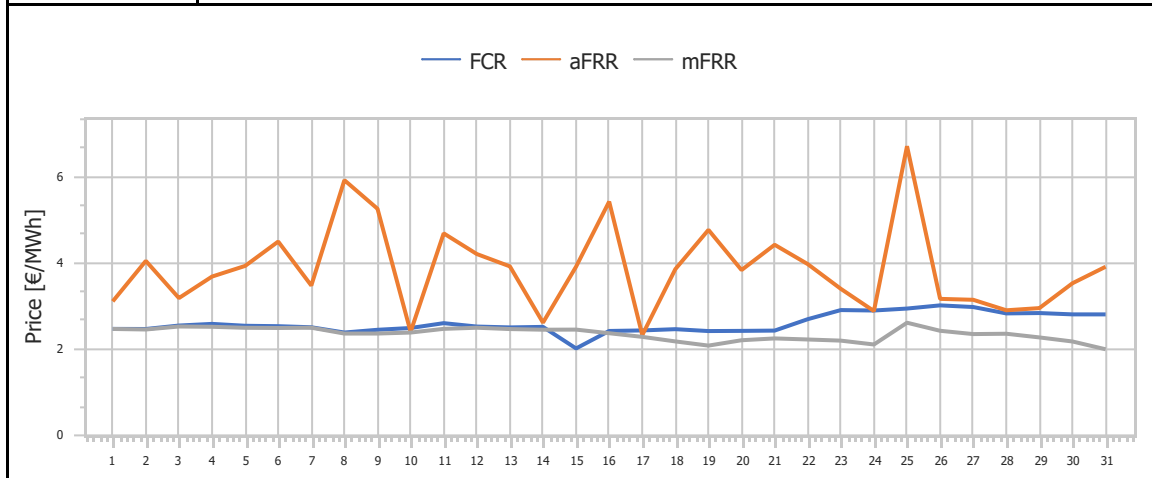
<b>Ref No</b>	Graph 3.7
<b>Title</b>	Net Activated Balancing energy
<b>Scope</b>	Integrated Scheduling Process (ISP)
<b>Analysis</b>	Daily



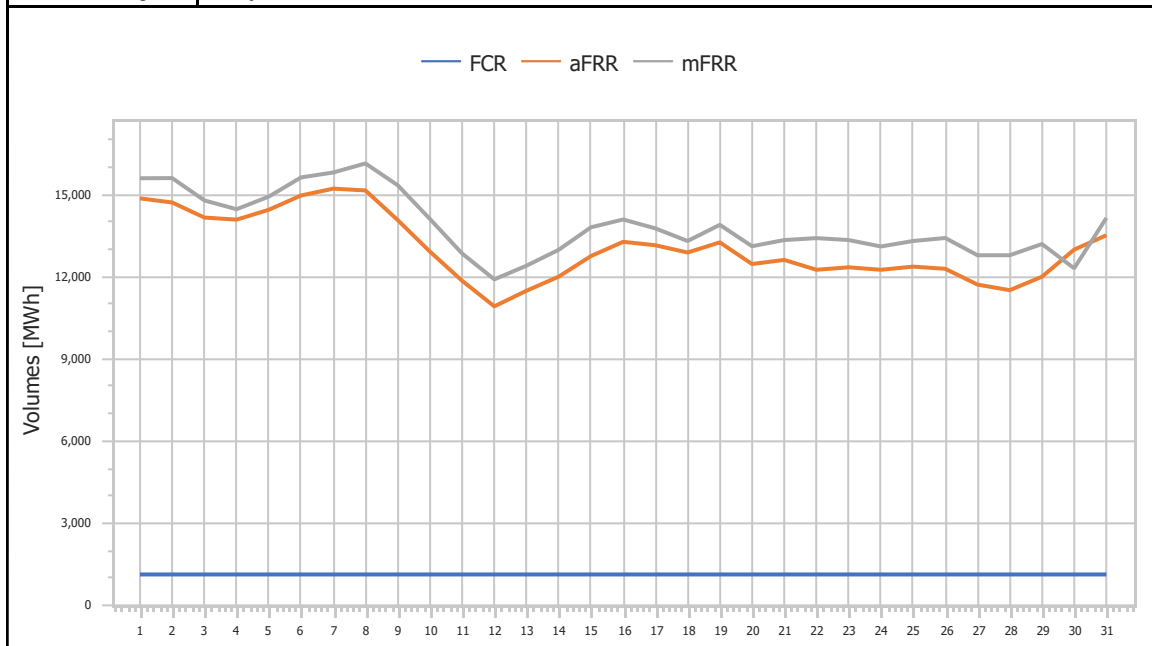
<b>Ref No</b>	Graph 3.8
<b>Title</b>	Upward Capacity Reserves Prices
<b>Scope</b>	Integrated Scheduling Process (ISP)
<b>Analysis</b>	Daily

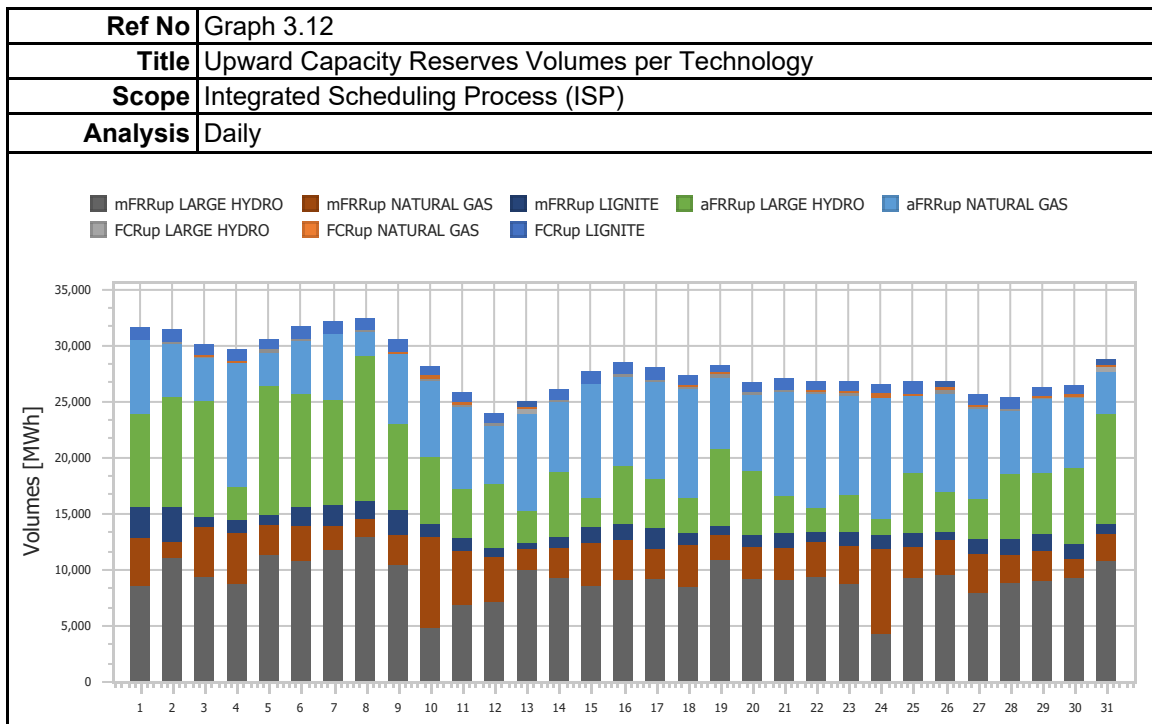
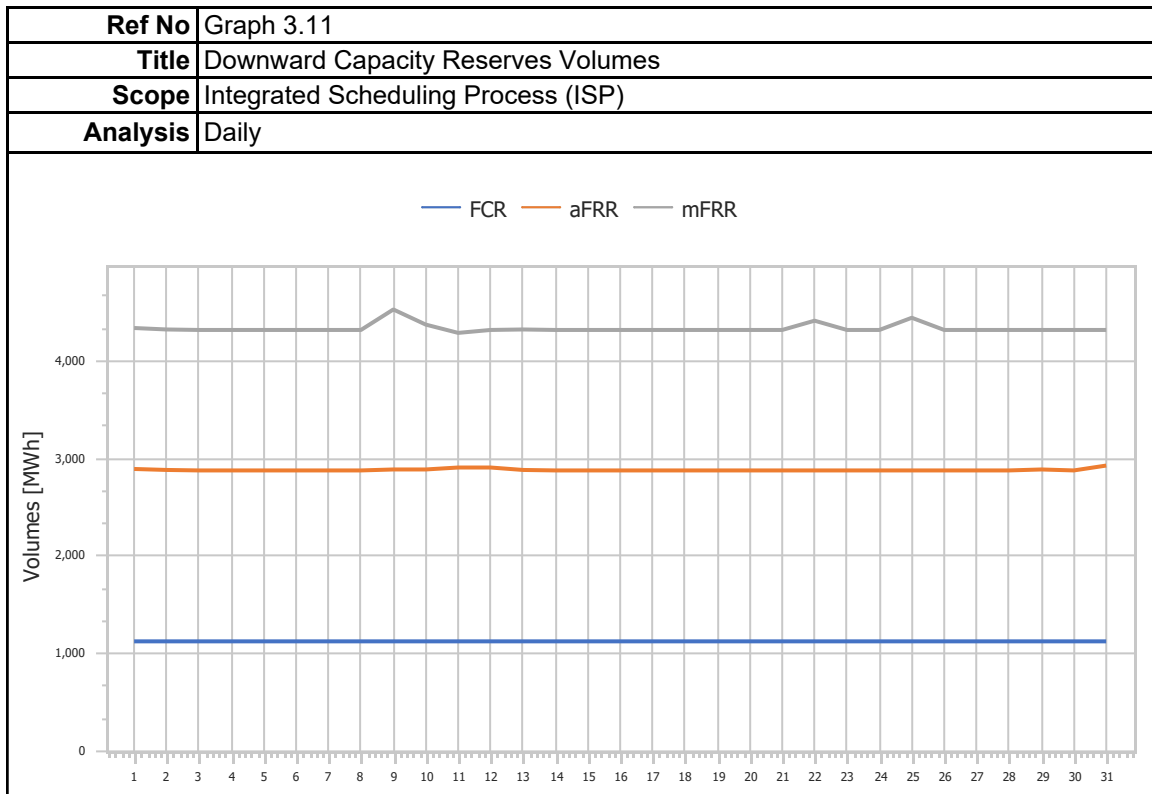


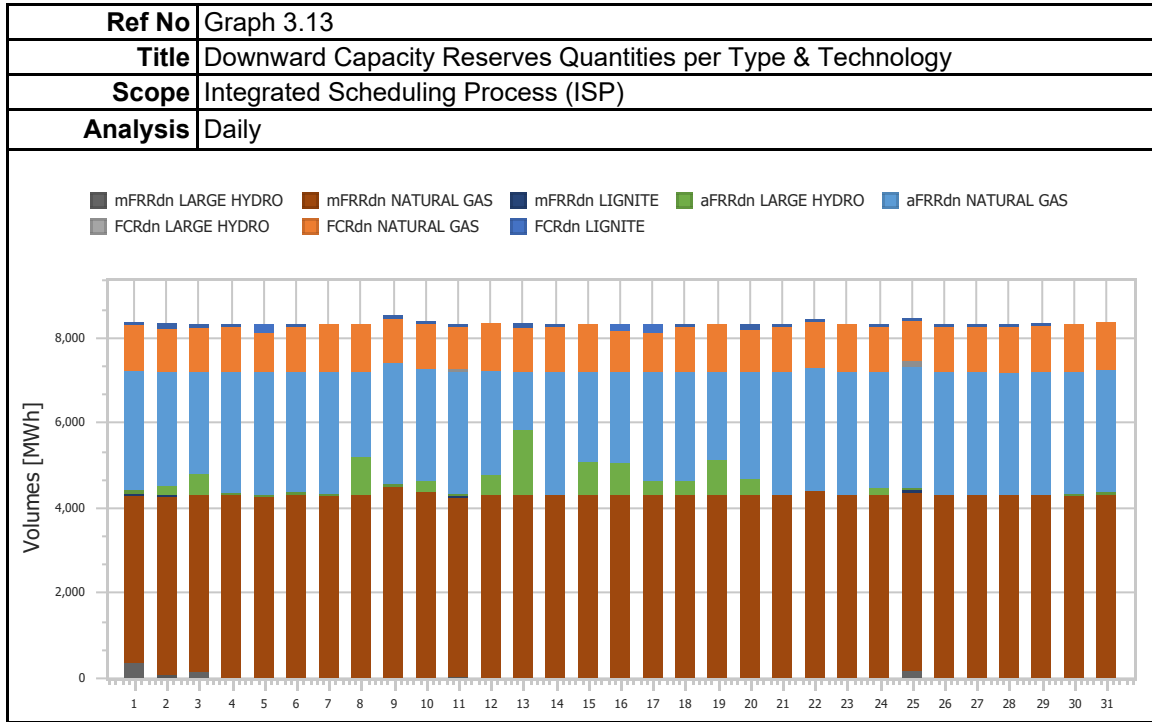
<b>Ref No</b>	Graph 3.9
<b>Title</b>	Downward Capacity Reserves Prices
<b>Scope</b>	Integrated Scheduling Process (ISP)
<b>Analysis</b>	Daily



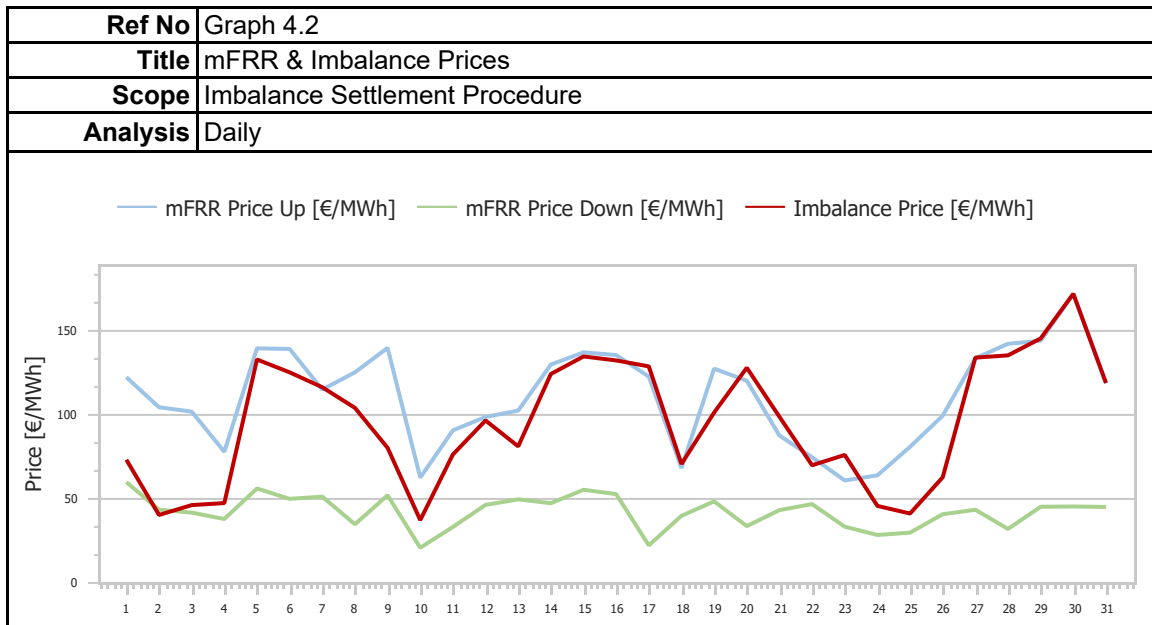
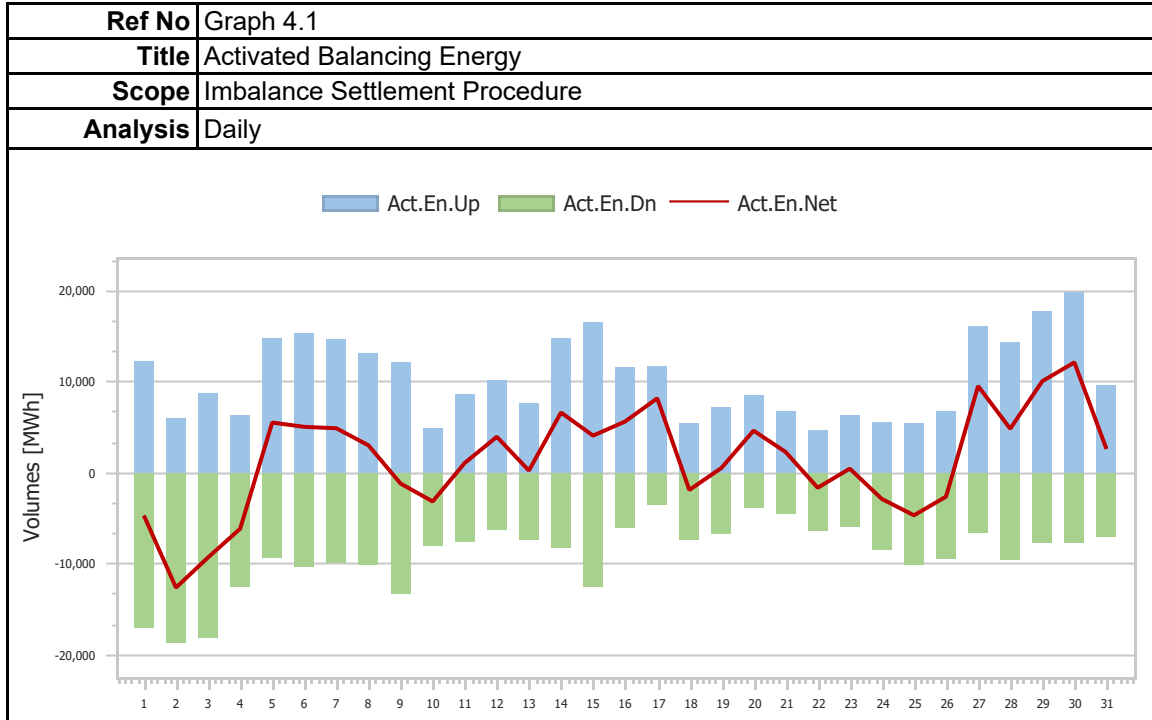
<b>Ref No</b>	Graph 3.10
<b>Title</b>	Upward Capacity Reserves Volumes
<b>Scope</b>	Integrated Scheduling Process (ISP)
<b>Analysis</b>	Daily



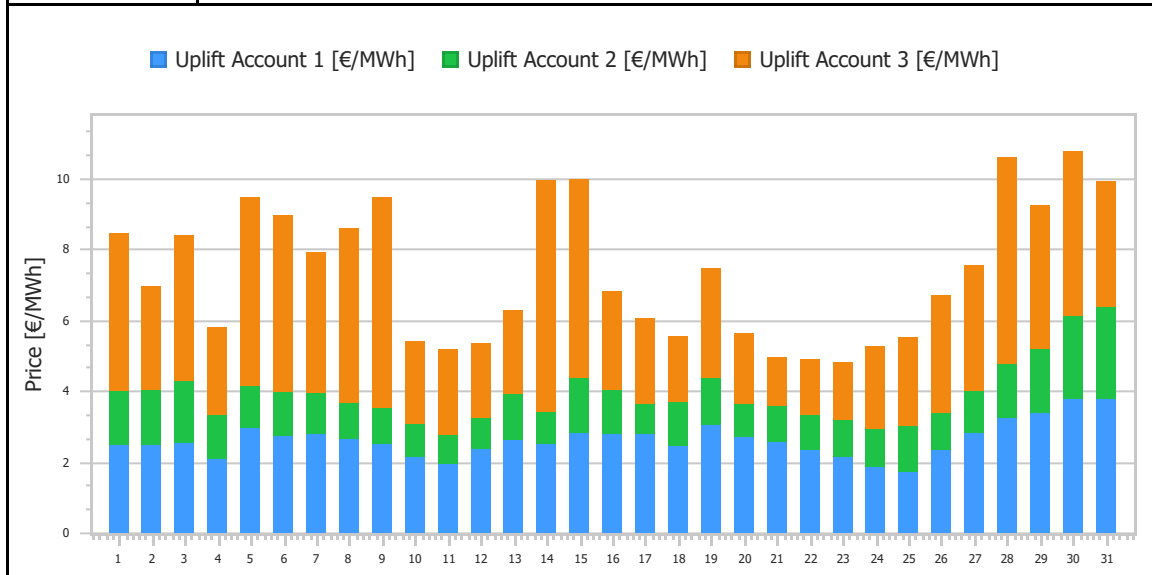




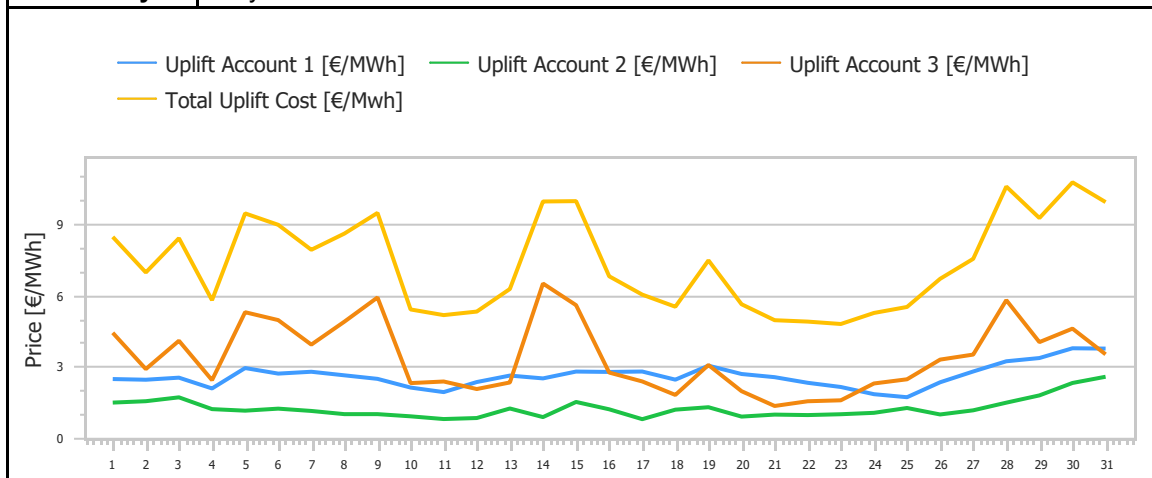
### 4. Imbalance Settlement Procedure



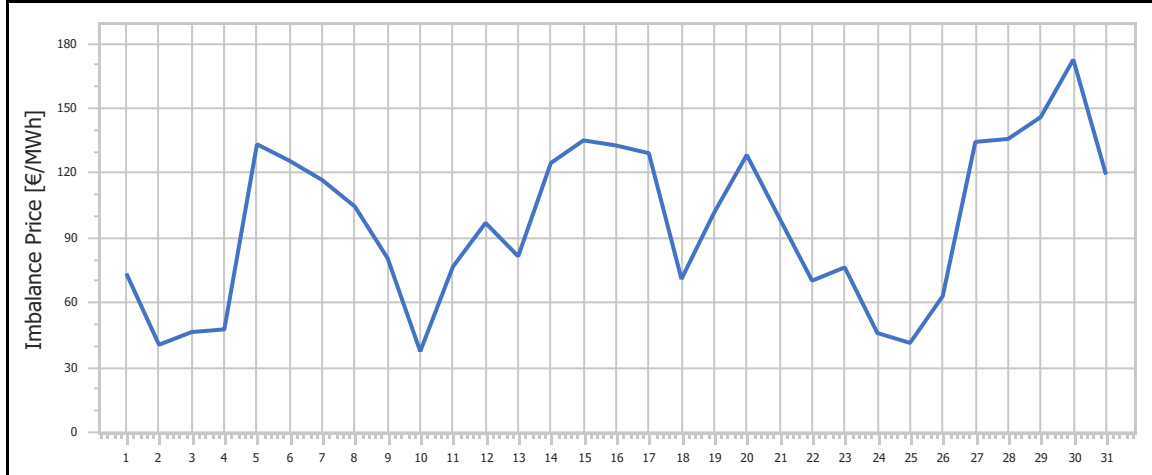
<b>Ref No</b>	Graph 4.3
<b>Title</b>	Uplift Accounts Cost
<b>Scope</b>	Imbalance Settlement Procedure
<b>Analysis</b>	Daily



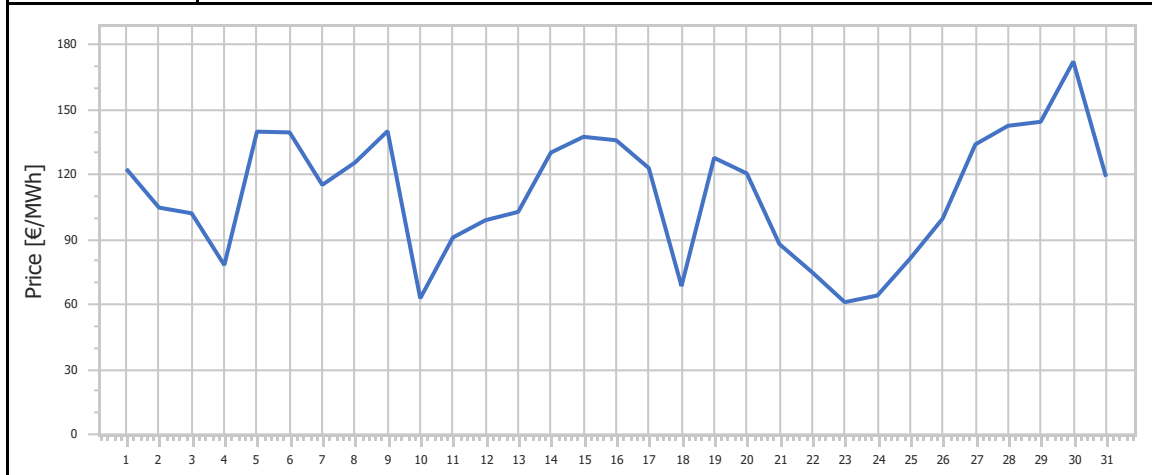
<b>Ref No</b>	Graph 4.4
<b>Title</b>	Uplift Accounts Cost
<b>Scope</b>	Imbalance Settlement Procedure
<b>Analysis</b>	Daily



<b>Ref No</b>	Graph 4.5
<b>Title</b>	Imbalance Price
<b>Scope</b>	Imbalance Settlement Procedure
<b>Analysis</b>	Daily

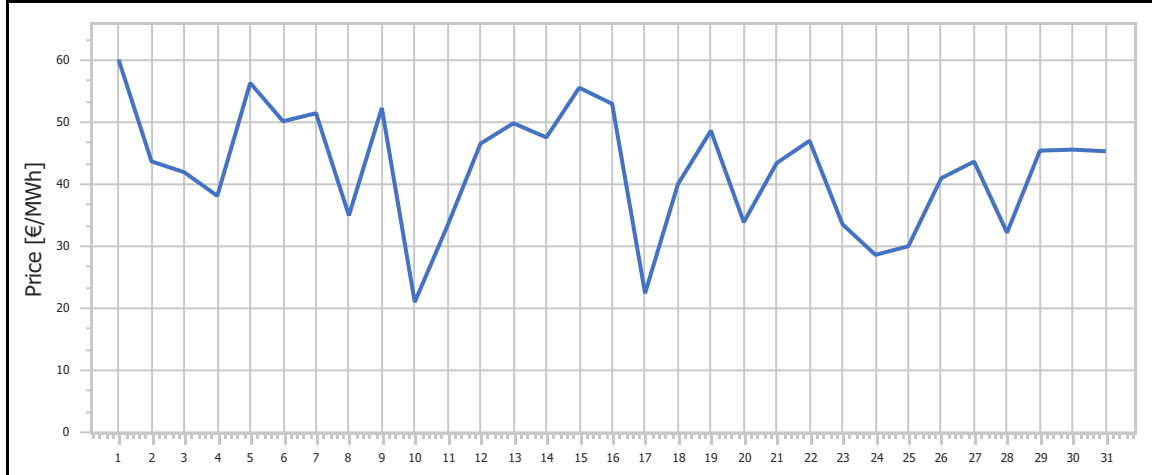


<b>Ref No</b>	Graph 4.6
<b>Title</b>	mFRR Up Price
<b>Scope</b>	Imbalance Settlement Procedure
<b>Analysis</b>	Daily

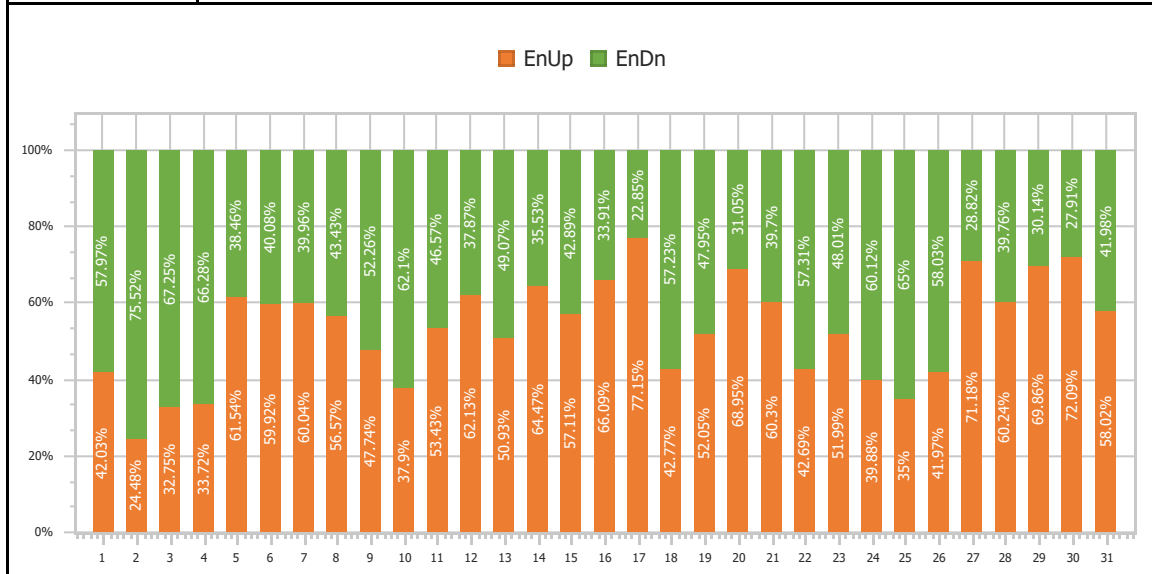




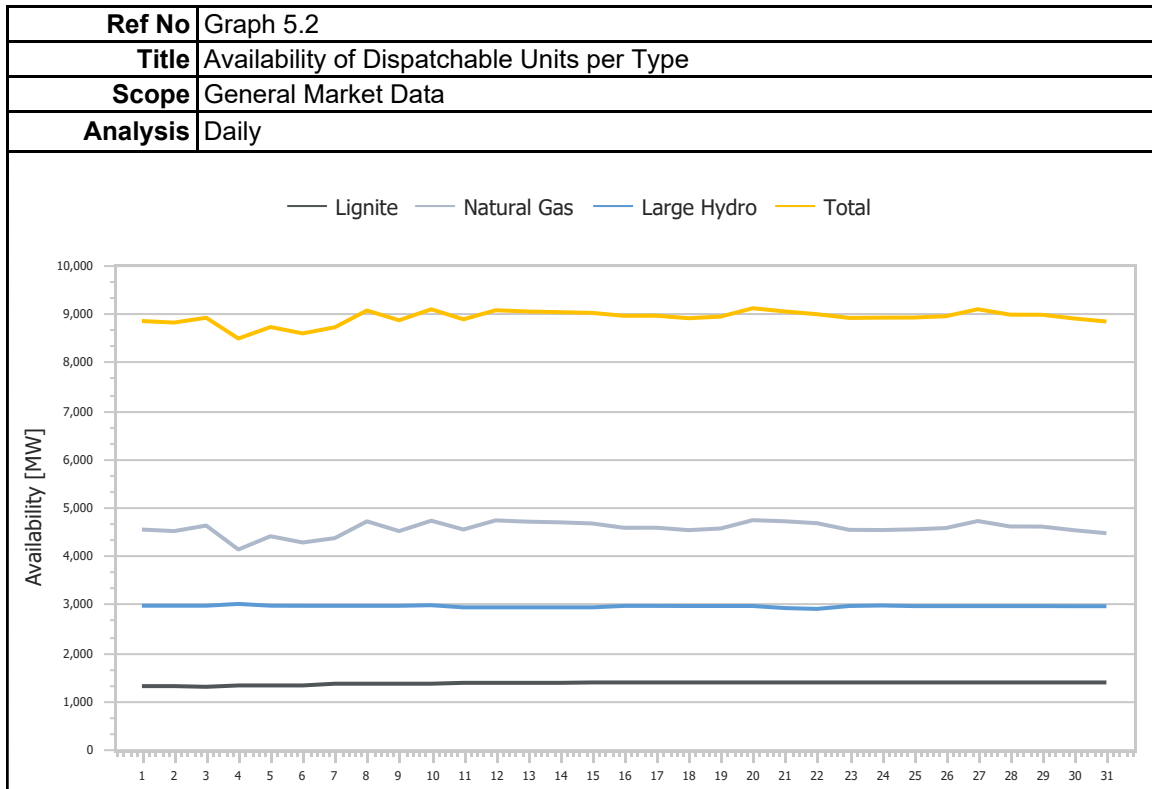
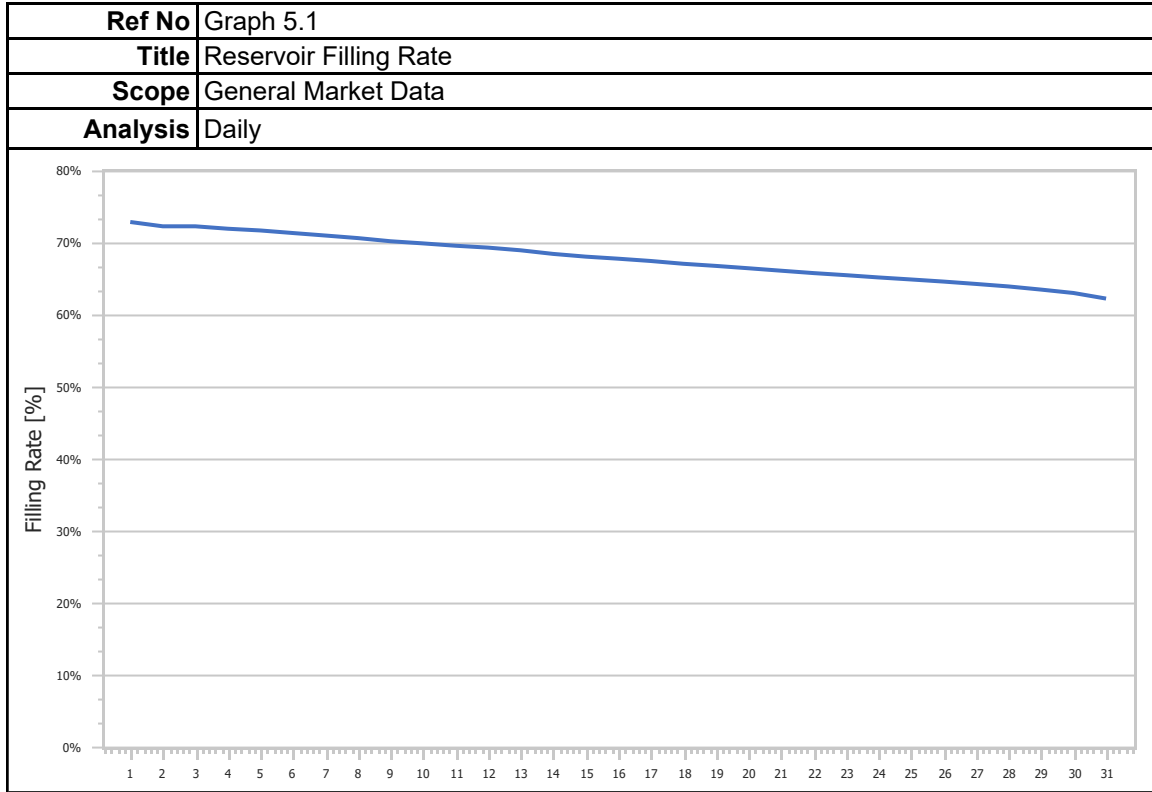
<b>Ref No</b>	Graph 4.7
<b>Title</b>	mFRR Down Price
<b>Scope</b>	Imbalance Settlement Procedure
<b>Analysis</b>	Daily



<b>Ref No</b>	Graph 4.8
<b>Title</b>	Balancing Energy Activation Direction
<b>Scope</b>	Imbalance Settlement Procedure
<b>Analysis</b>	Daily



### 5. General Market Data



## 1. Statistics

<b>Ref No</b>	Table 1.1			
<b>Title</b>	Market Shares per Aggregated Classification - SELL			
<b>Scope</b>	Day Ahead Market (DAM)			
<b>Analysis</b>	Monthly			
Classification	Quantity [MWh]	Share [%]	Value [EUR]	Share [%]
Lignite	426,970.145	7.53%	46,370,290.18€	7.86%
Crete Conventional	-	0.00%	- €	0.00%
Natural Gas	2,553,992.660	45.07%	267,152,377.74€	45.29%
Large Hydro	396,991.563	7.01%	43,375,199.21€	7.35%
RES	1,430,268.945	25.24%	145,062,073.48€	24.59%
Crete Renewables	-	0.00%	- €	0.00%
Imports	858,355.480	15.15%	87,894,010.65€	14.90%
<b>Total</b>	<b>5,666,578.794</b>	<b>100.00%</b>	<b>589,853,951.25€</b>	<b>100.00%</b>

<b>Ref No</b>	Table 1.2						
<b>Title</b>	Statistics per Aggregated Classification - SELL						
<b>Scope</b>	Day Ahead Market (DAM)						
<b>Analysis</b>	Monthly						
	MCP [€/MWh]	Total [MWh]	Lignite [MWh]	Natural Gas [MWh]	Hydro [MWh]	RES [MWh]	Imports [MWh]
<b>Total</b>	-	5,666,578.79	426,970.14	2,553,992.66	396,991.56	1,430,268.94	858,355.48
<b>Average</b>	101.86	182,792.86	13,773.23	82,386.86	12,806.18	46,137.71	27,688.89
<b>Min</b>	75.34	154,111.01	8,304.00	47,786.80	10,806.36	29,631.99	13,189.23
<b>Min day</b>	25	25	10	25	1	5	9
<b>Max</b>	143.23	206,298.20	28,467.02	94,066.45	19,344.93	63,777.35	36,996.56
<b>Max day</b>	31	30	31	13	13	9	18
<b>Spread</b>	67.89	52,187.19	20,163.02	46,279.65	8,538.57	34,145.37	23,807.33
<b>Standard Deviation</b>	15.08	13,671.18	5,985.77	11,356.53	2,142.58	11,251.30	7,081.21

<b>Ref No</b>	Table 1.3
<b>Title</b>	Market Shares per Aggregated Classification - BUY
<b>Scope</b>	Day Ahead Market (DAM)
<b>Analysis</b>	Monthly

Classification	Quantity [MWh]	Share [%]	Value [EUR]	Share [%]
System Losses	117,788.500	2.08%	12,235,566.58€	2.07%
Crete Load	-	0.00%	- €	0.00%
HV Load	614,869.254	10.85%	62,054,890.38€	10.52%
MV Load	1,194,550.312	21.08%	124,296,396.27€	21.07%
LV Load	3,629,581.721	64.05%	380,285,118.20€	64.47%
PUMP	770.000	0.01%	70,411.00€	0.01%
Exports	109,017.480	1.92%	10,911,424.54€	1.85%
<b>Total</b>	<b>5,666,577.272</b>	<b>100.00%</b>	<b>589,853,806.96€</b>	<b>100.00%</b>

<b>Ref No</b>	Table 1.4
<b>Title</b>	Statistics per Aggregated Classification - BUY
<b>Scope</b>	Day Ahead Market (DAM)
<b>Analysis</b>	Monthly

	MCP [€/MWh]	Total [MWh]	Sys Losses [MWh]	HV [MWh]	MV [MWh]	LV [MWh]	PUMP [MWh]	Exports [MWh]
<b>Total</b>	-	5,666,577.27	117,788.50	614,869.25	1,194,550.31	3,629,581.72	770.00	109,017.48
<b>Average</b>	101.86	182,792.82	3,799.63	19,834.49	38,533.88	117,083.28	385.00	3,516.69
<b>Min</b>	75.34	154,111.00	2,741.50	18,653.83	26,990.45	98,129.21	330.00	566.81
<b>Min day</b>	25	25	25	19	25	25	30	1
<b>Max</b>	143.23	206,298.17	4,518.00	21,575.55	44,247.90	134,708.84	440.00	9,490.34
<b>Max day</b>	31	30	9	10	2	31	29	28
<b>Spread</b>	67.89	52,187.16	1,776.50	2,921.72	17,257.45	36,579.64	110.00	8,923.53
<b>Standard Deviation</b>	15.08	13,671.19	423.14	698.09	5,114.23	9,430.73	55.00	2,162.47

## 2. Market Shares

<b>Ref No</b>	Table 2.1.1			
<b>Title</b>	Market Shares - Upward Capacity Reserves Volumes per Type			
<b>Scope</b>	Balancing Market (BM)			
<b>Analysis</b>	Monthly			
Type	Quantity [MW]	Share [%]	Value [EUR]	Share [%]
aFRR	1,602,050.060	59.75%	4,450,466.58€	74.51%
FCR	98,253.610	3.66%	138,218.07€	2.31%
mFRR	981,053.380	36.59%	1,384,386.80€	23.18%
<b>Total</b>	<b>2,681,357.060</b>	<b>100.00%</b>	<b>5,973,071.45€</b>	<b>100.00%</b>

<b>Ref No</b>	Table 2.1.2			
<b>Title</b>	Market Shares - Downward Capacity Reserves per Type			
<b>Scope</b>	Balancing Market(BM)			
<b>Analysis</b>	Monthly			
Type	Quantity [MW]	Share [%]	Value [EUR]	Share [%]
aFRR	352,754.430	34.69%	558,903.32€	42.73%
FCR	137,088.910	13.48%	166,482.42€	12.73%
mFRR	527,137.200	51.83%	582,754.10€	44.55%
<b>Total</b>	<b>1,016,980.540</b>	<b>100.00%</b>	<b>1,308,139.84€</b>	<b>100.00%</b>

<b>Ref No</b>	Table 2.1.3				
<b>Title</b>	Market Shares - Upward Activated Balancing Energy per Type				
<b>Scope</b>	Balancing Market (BM)				
<b>Analysis</b>	Monthly				
Type	Quantity [MWh]	Share [%]	Value [EUR]	Share [%]	
aFRR	153,733.470	47.38%	20,823,595.85€	47.45%	
mFRR	170,734.620	52.62%	23,062,199.71€	52.55%	
<b>Total</b>	<b>324,468.100</b>	<b>100.00%</b>	<b>43,885,795.56€</b>	<b>100.00%</b>	

<b>Ref No</b>	Table 2.1.4				
<b>Title</b>	Market Shares - Downward Activated Balancing Energy per Type				
<b>Scope</b>	Balancing Market (BM)				
<b>Analysis</b>	Monthly				
Type	Quantity [MWh]	Share [%]	Value [EUR]	Share [%]	
aFRR	107,598.800	38.56%	3,962,870.69€	34.06%	
mFRR	171,421.500	61.44%	7,672,407.16€	65.94%	
<b>Total</b>	<b>279,020.300</b>	<b>100.00%</b>	<b>11,635,277.85€</b>	<b>100.00%</b>	

### 3. Market Overview

<b>Ref No</b>	Table 3.1
<b>Title</b>	Total Transactions Quantity per Market
<b>Scope</b>	DAM, IDM, Balancing Energy Market
<b>Analysis</b>	Monthly

Market	Quantity [MWh]	Share [%]
DAM	5,666,578.79	97.77%
IDMA1	38,215.46	0.66%
IDMA2	18,831.50	0.32%
IDMA3	26,525.89	0.46%
IDM (Total)	83,572.86	1.44%
Balancing Energy (Up)	324,468.10	5.60%
Balancing Energy (Dn)	279,020.30	4.81%
Balancing Energy (Total)	45,447.80	0.78%
<b>Total</b>	<b>5,795,599.45</b>	<b>100.00%</b>

<b>Ref No</b>	Table 3.2
<b>Title</b>	Total Transactions Value per Market
<b>Scope</b>	DAM, IDM, Balancing Energy Market
<b>Analysis</b>	Monthly

Market	Value [EUR]	Share [%]
DAM	589,853,951.25€	92.36%
IDMA1	4,226,016.56€	0.66%
IDMA2	1,914,239.41€	0.30%
IDMA3	3,103,931.73€	0.49%
IDM (Total)	9,244,187.70€	1.45%
Balancing Capacity (Up)	5,973,071.45€	0.94%
Balancing Capacity (Dn)	1,308,139.84€	0.20%
Balancing Capacity (Total)	7,281,211.28€	1.14%
Balancing Energy (Up)	43,885,795.56€	6.87%
Balancing Energy (Dn)	11,635,277.85€	1.82%
Balancing Energy (Total)	32,250,517.71€	5.05%
Balancing Market (Total)	39,531,728.99€	6.19%
<b>Total</b>	<b>638,629,867.94€</b>	<b>100.00%</b>