

# Market Monitoring Report

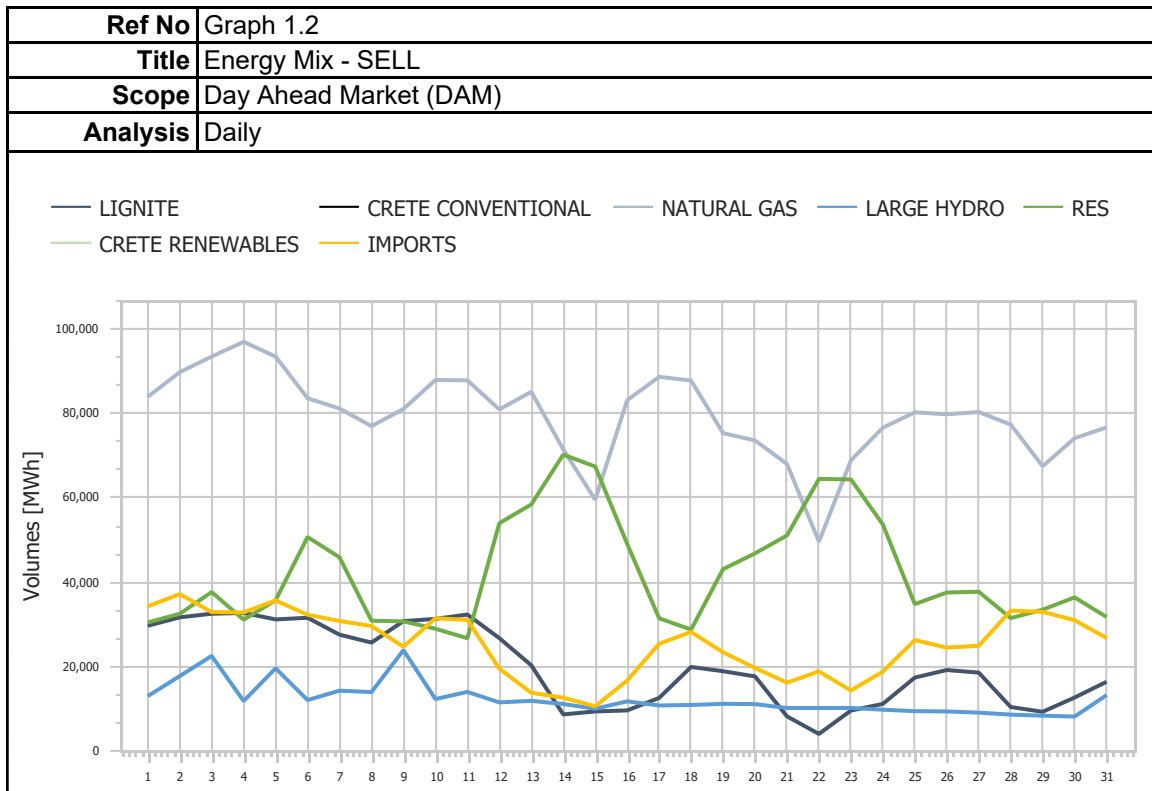
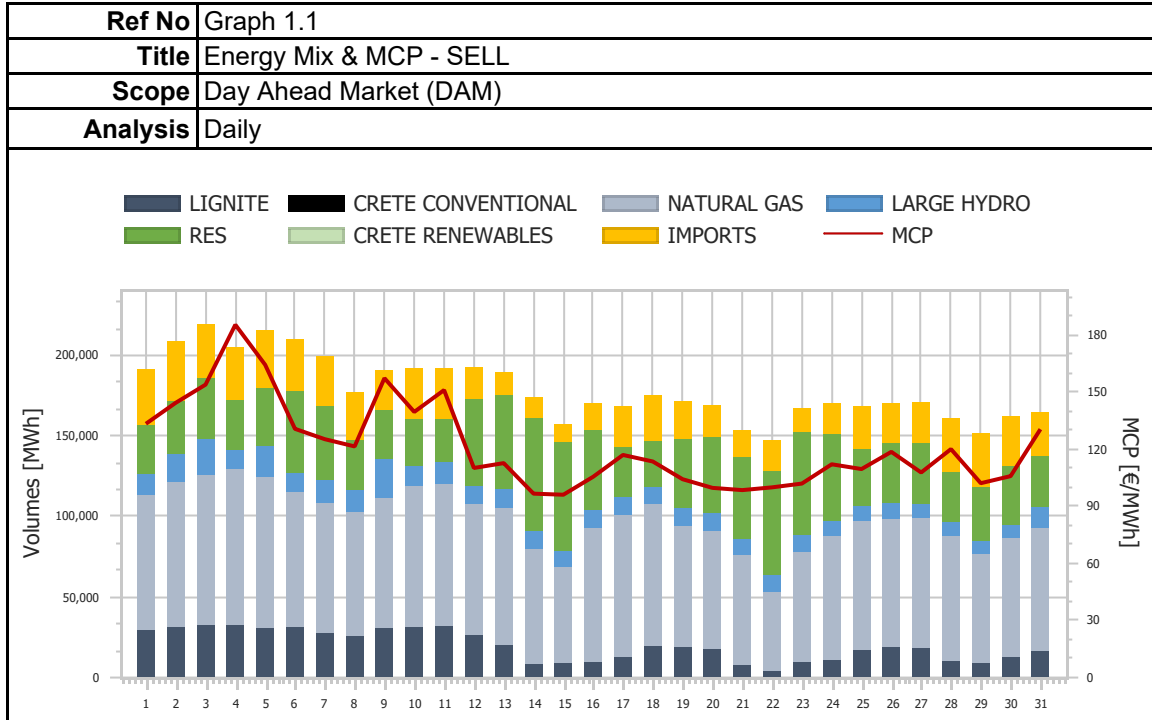
Monthly - Public - 2

**08-2021**

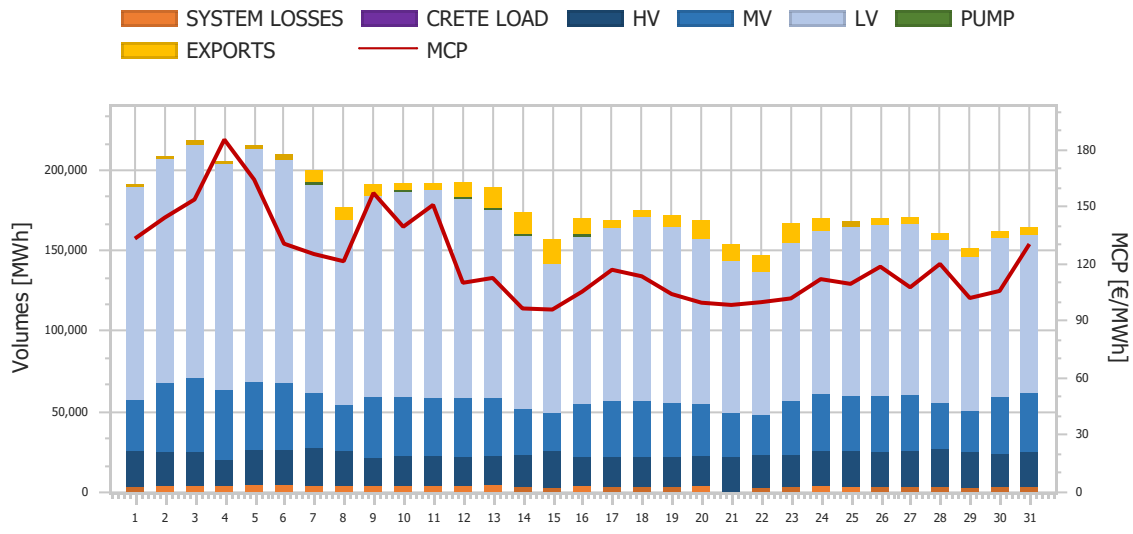


ΡΥΘΜΙΣΤΙΚΗ ΑΡΧΗ ΕΝΕΡΓΕΙΑΣ  
REGULATORY AUTHORITY FOR ENERGY

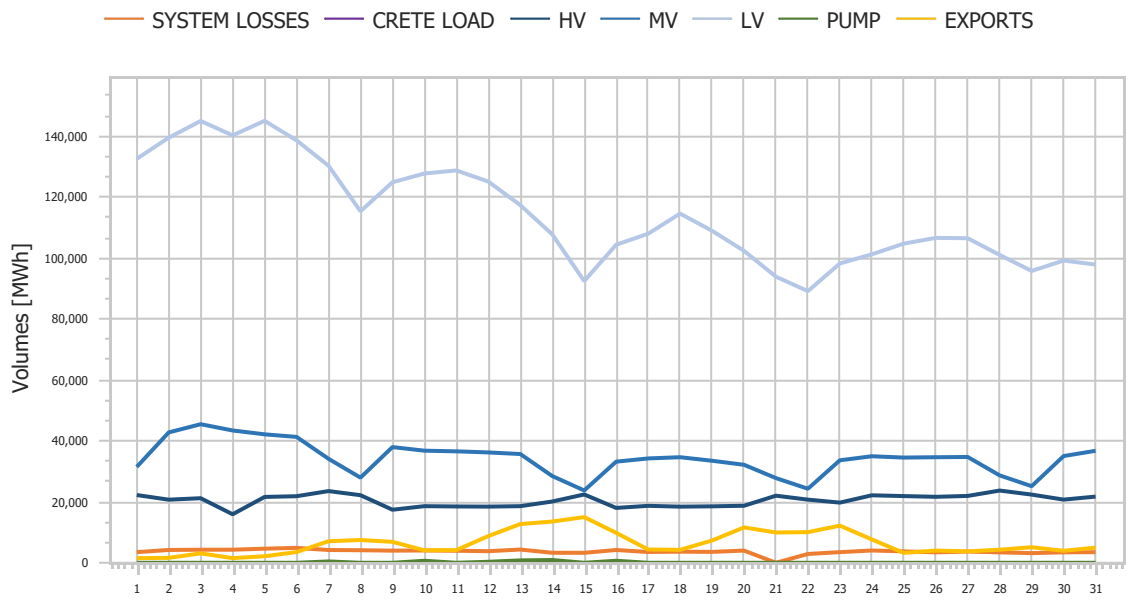
# 1. Day Ahead Market (DAM)



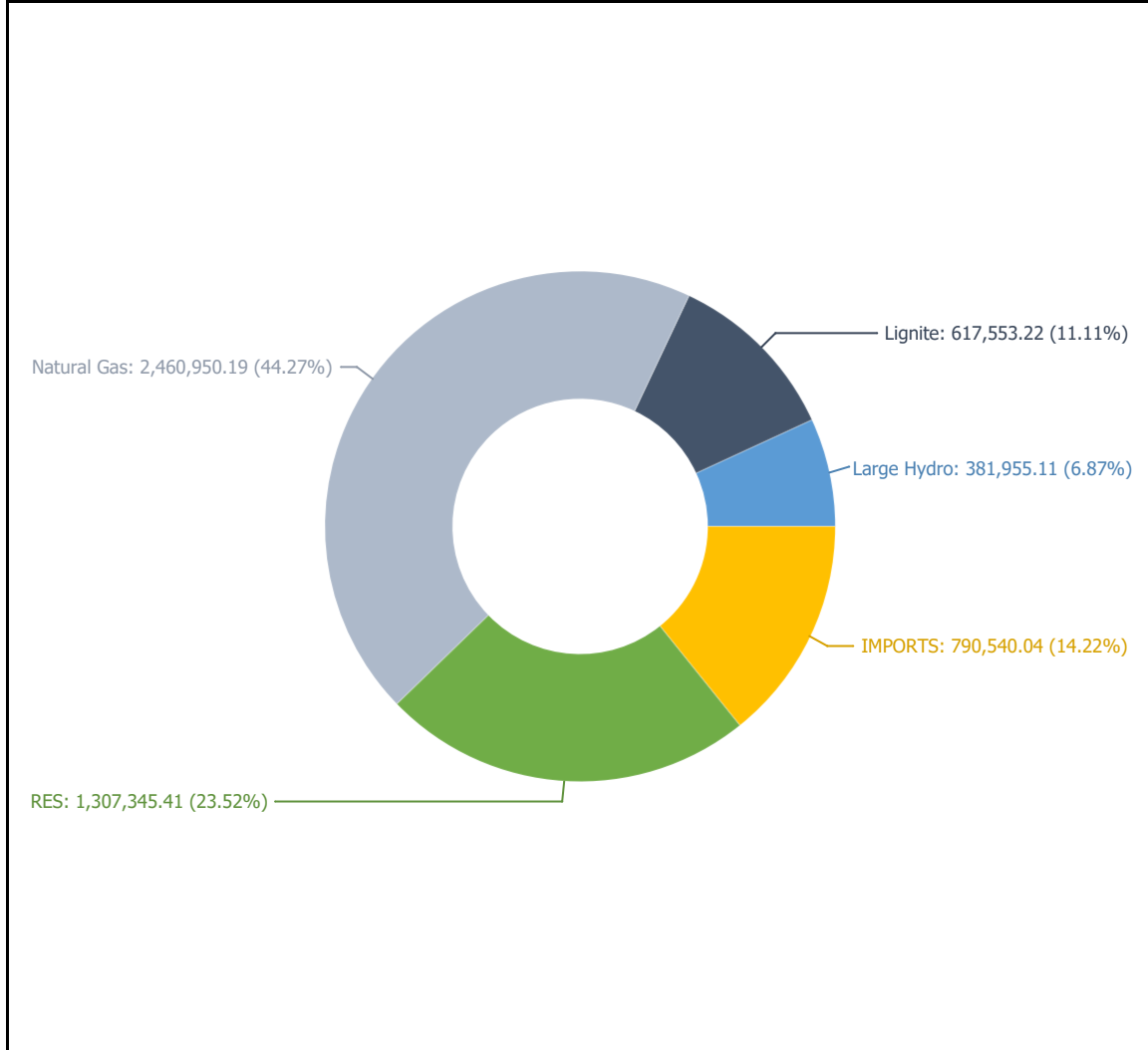
<b>Ref No</b>	Graph 1.3
<b>Title</b>	Energy Mix & MCP - BUY
<b>Scope</b>	Day Ahead Market (DAM)
<b>Analysis</b>	Daily



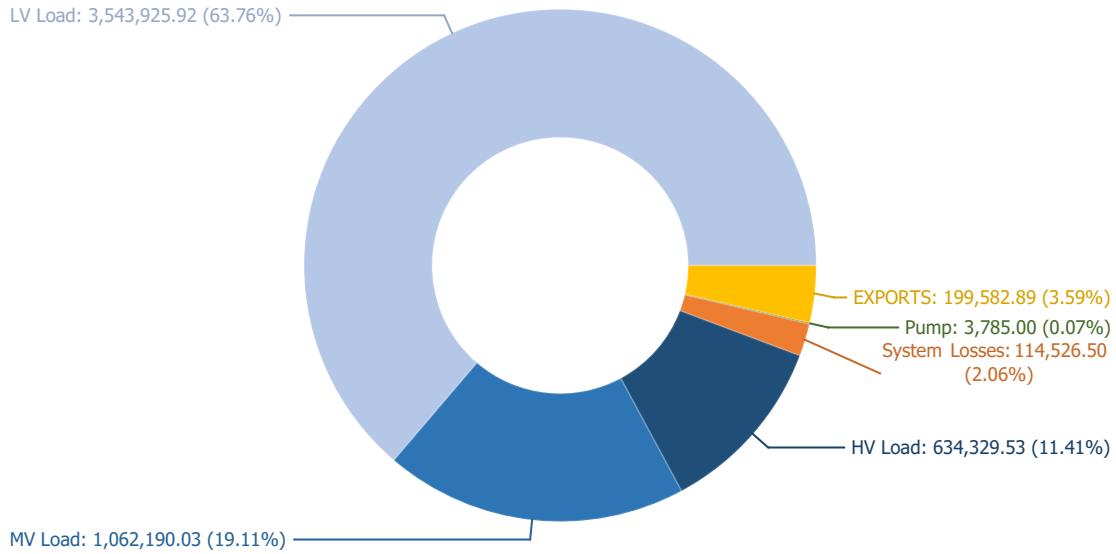
<b>Ref No</b>	Graph 1.4
<b>Title</b>	Energy Mix - BUY
<b>Scope</b>	Day Ahead Market (DAM)
<b>Analysis</b>	Daily



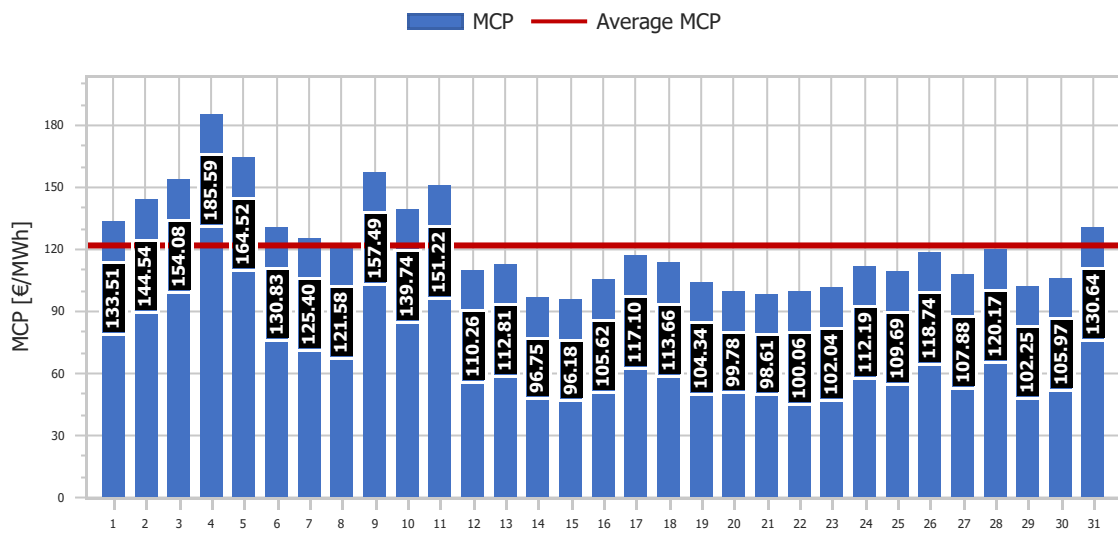
<b>Ref No</b>	Graph 1.5
<b>Title</b>	Energy Mix - SELL
<b>Scope</b>	Day Ahead Market (DAM)
<b>Analysis</b>	Daily



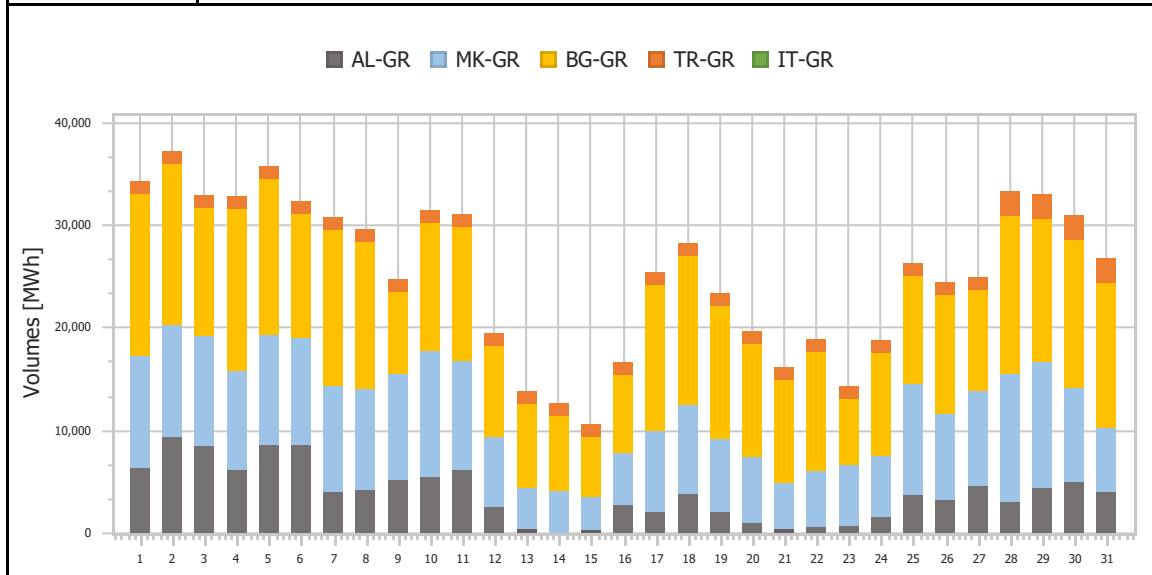
<b>Ref No</b>	Graph 1.6
<b>Title</b>	Energy Mix - BUY
<b>Scope</b>	Day Ahead Market (DAM)
<b>Analysis</b>	Daily



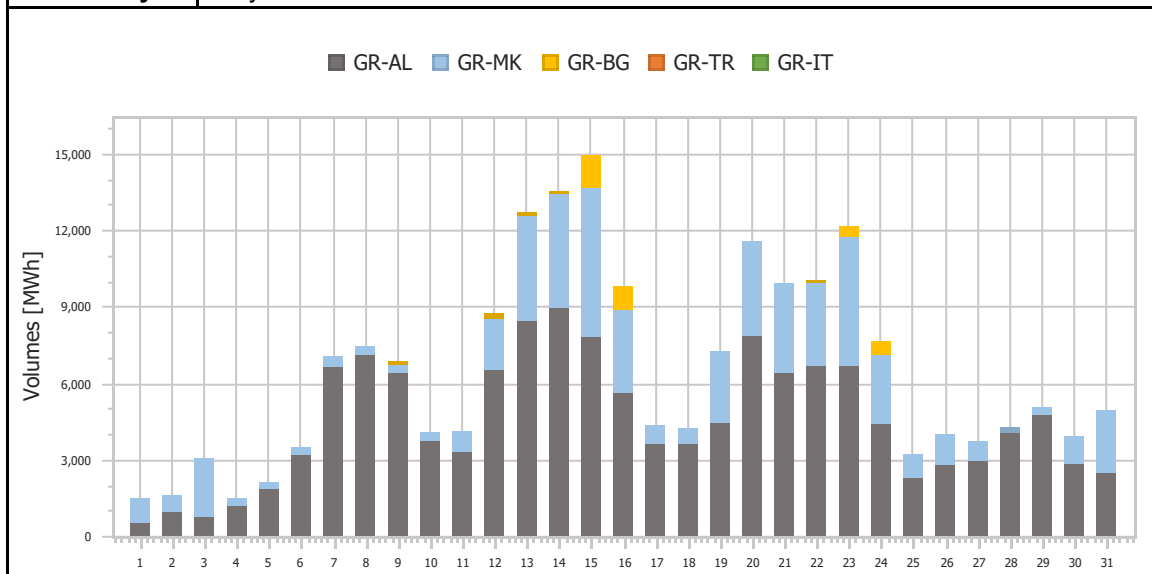
<b>Ref No</b>	Graph 1.7
<b>Title</b>	Market Clearing Price (MCP)
<b>Scope</b>	Day Ahead Market (DAM)
<b>Analysis</b>	Daily



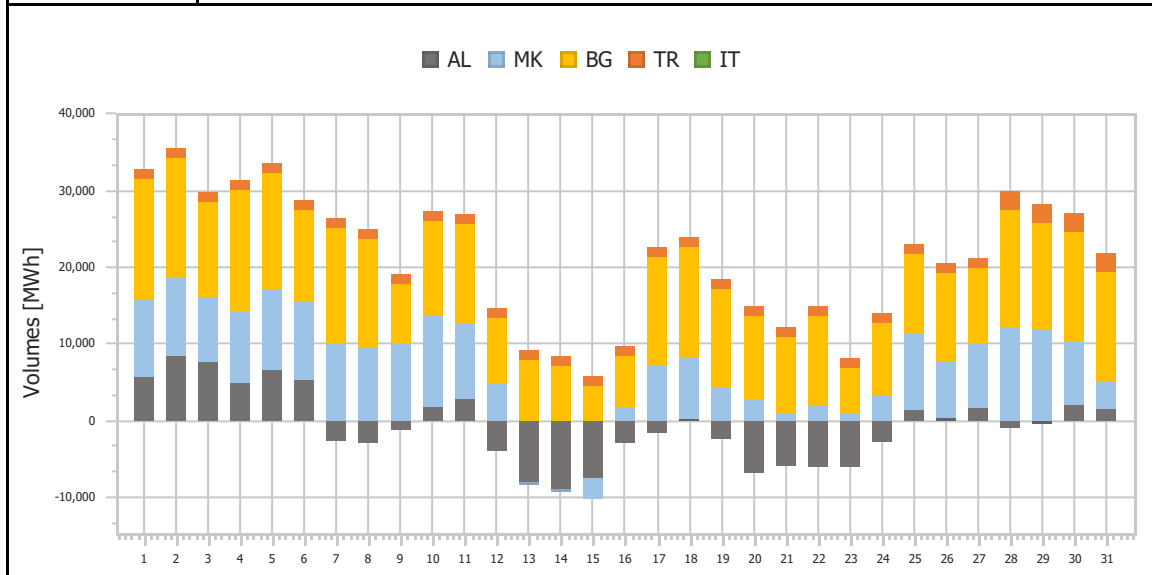
<b>Ref No</b>	Graph 1.8
<b>Title</b>	Imports per Border
<b>Scope</b>	Day Ahead Market (DAM)
<b>Analysis</b>	Daily



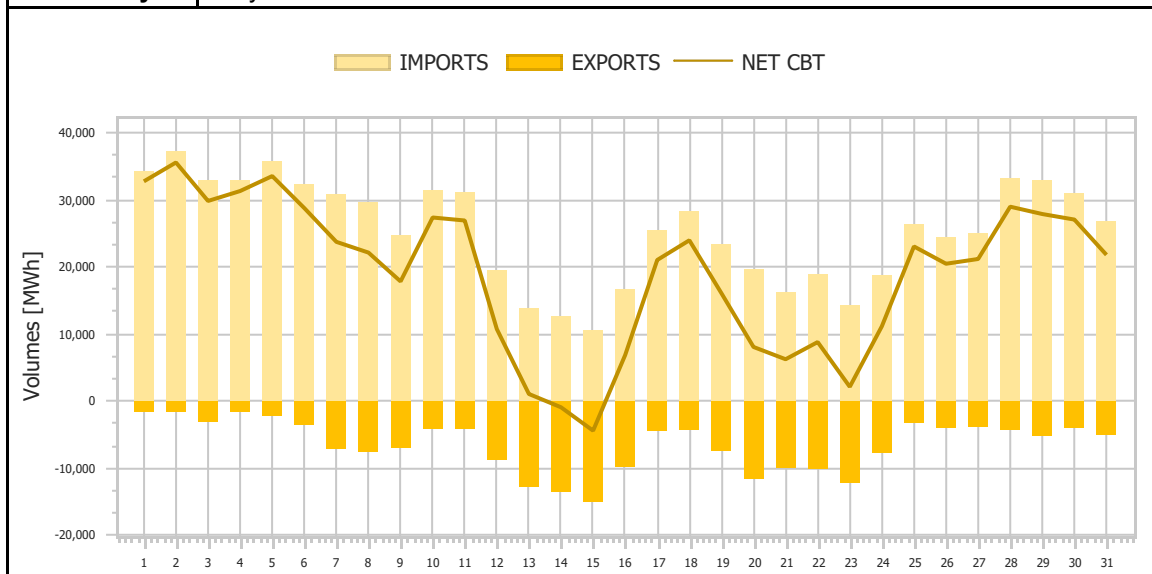
<b>Ref No</b>	Graph 1.9
<b>Title</b>	Exports per Border
<b>Scope</b>	Day Ahead Market (DAM)
<b>Analysis</b>	Daily



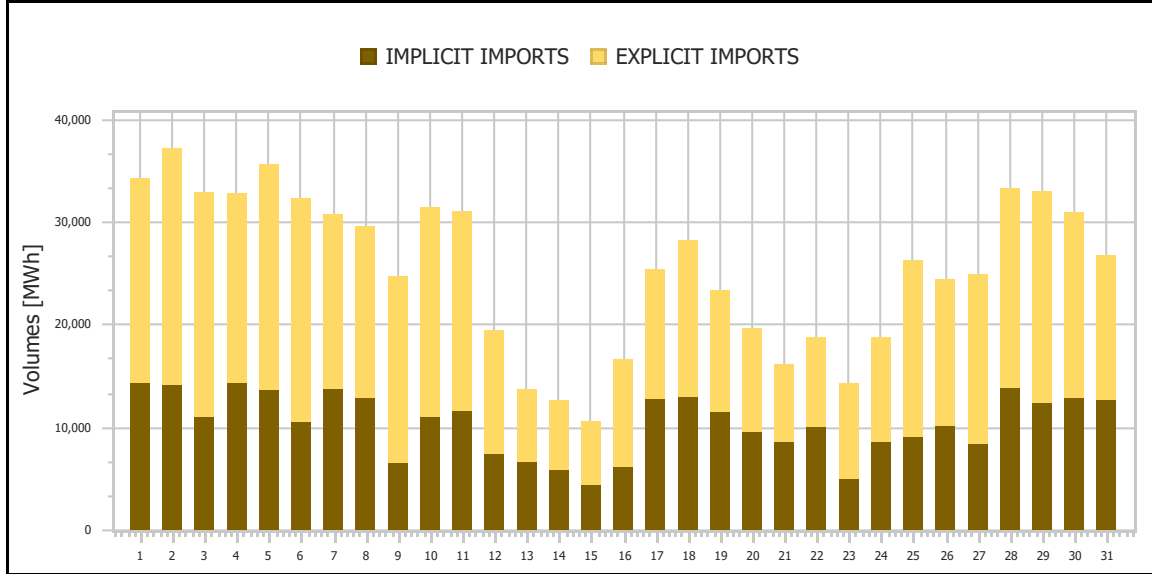
<b>Ref No</b>	Graph 1.10
<b>Title</b>	Net Imports per Border
<b>Scope</b>	Day Ahead Market (DAM)
<b>Analysis</b>	Daily



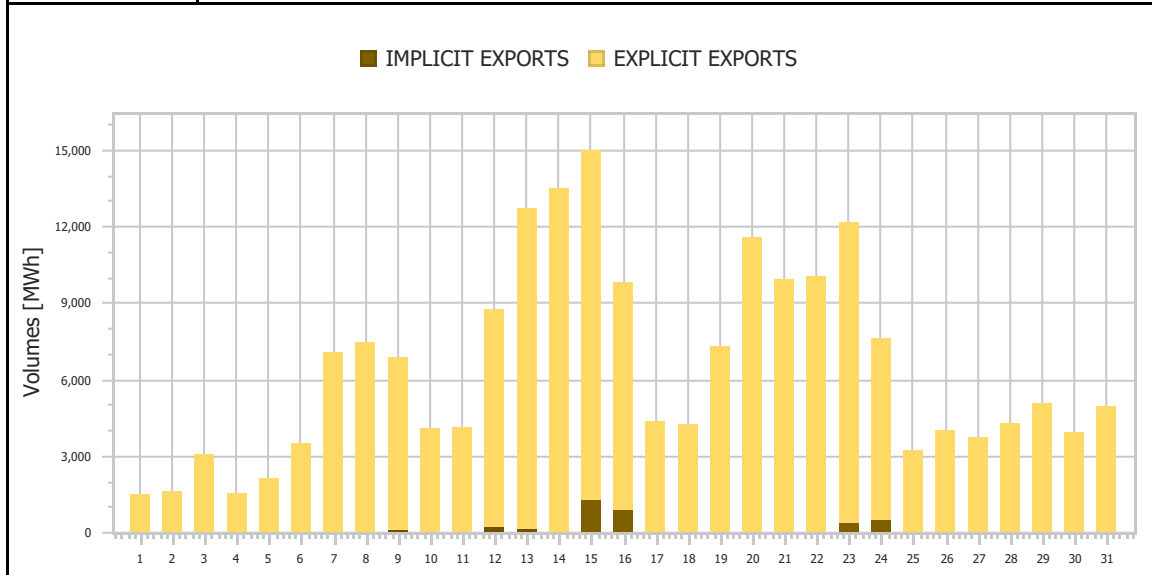
<b>Ref No</b>	Graph 1.11
<b>Title</b>	Total Imports & Exports
<b>Scope</b>	Day Ahead Market (DAM)
<b>Analysis</b>	Daily



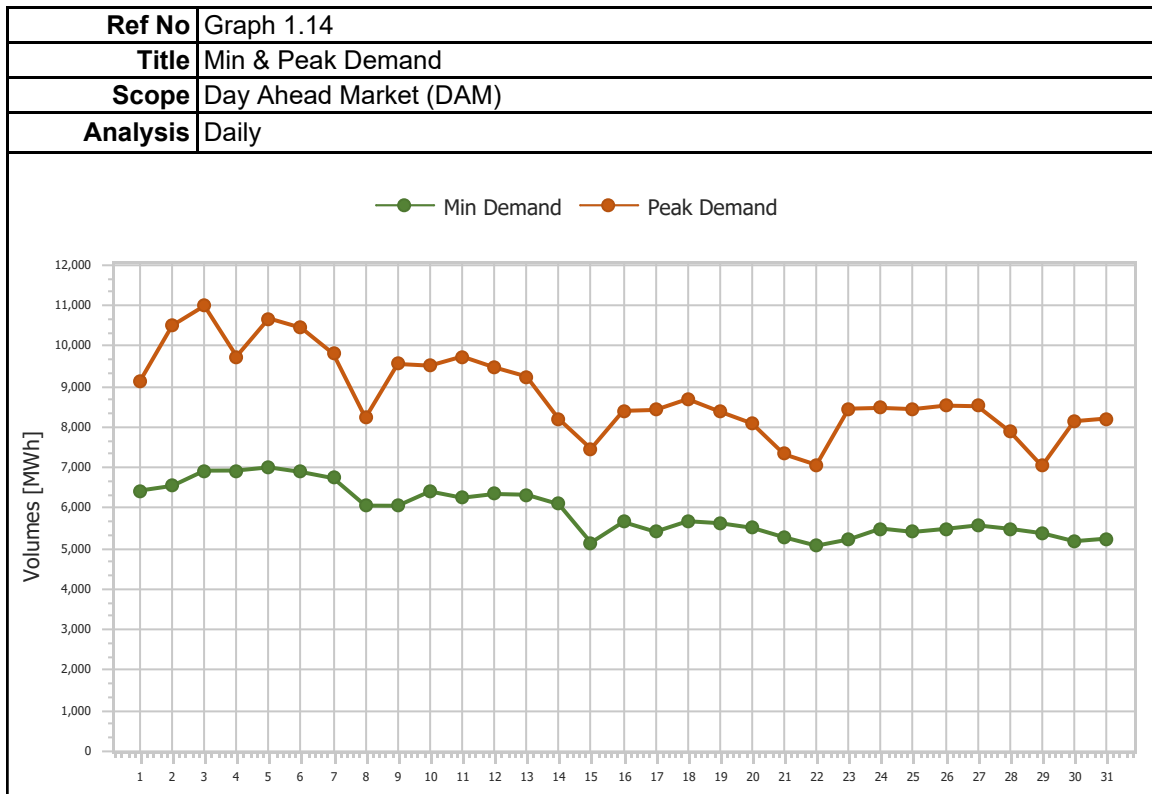
<b>Ref No</b>	Graph 1.12
<b>Title</b>	Imports (Implicit/Explicit)
<b>Scope</b>	Day Ahead Market (DAM)
<b>Analysis</b>	Daily



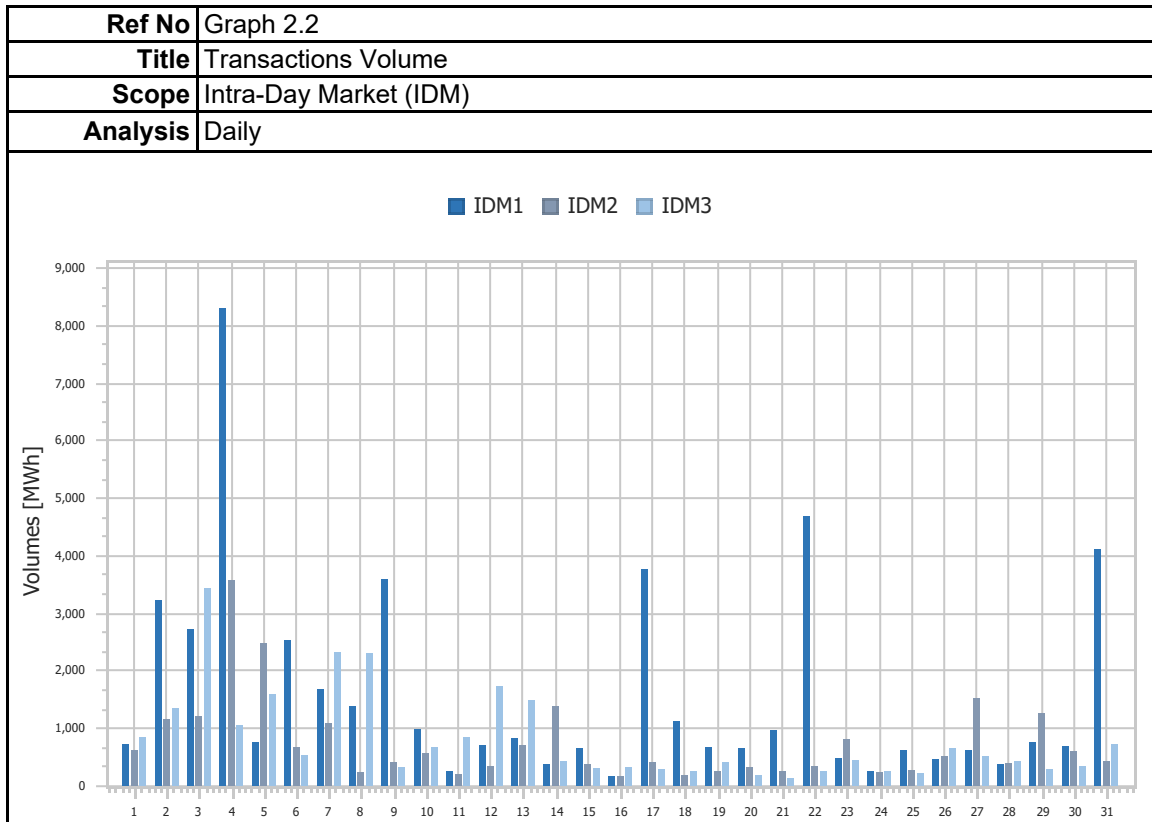
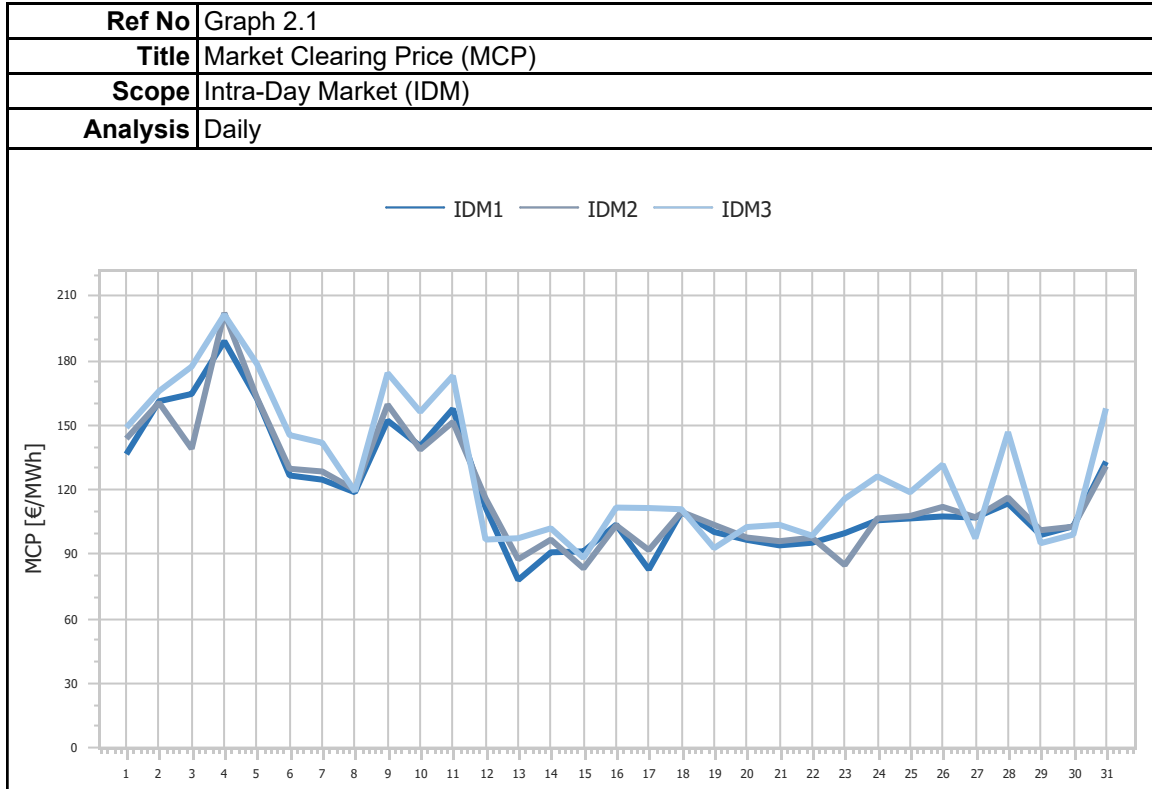
<b>Ref No</b>	Graph 1.13
<b>Title</b>	Exports (Implicit/Explicit)
<b>Scope</b>	Day Ahead Market (DAM)
<b>Analysis</b>	Monthly

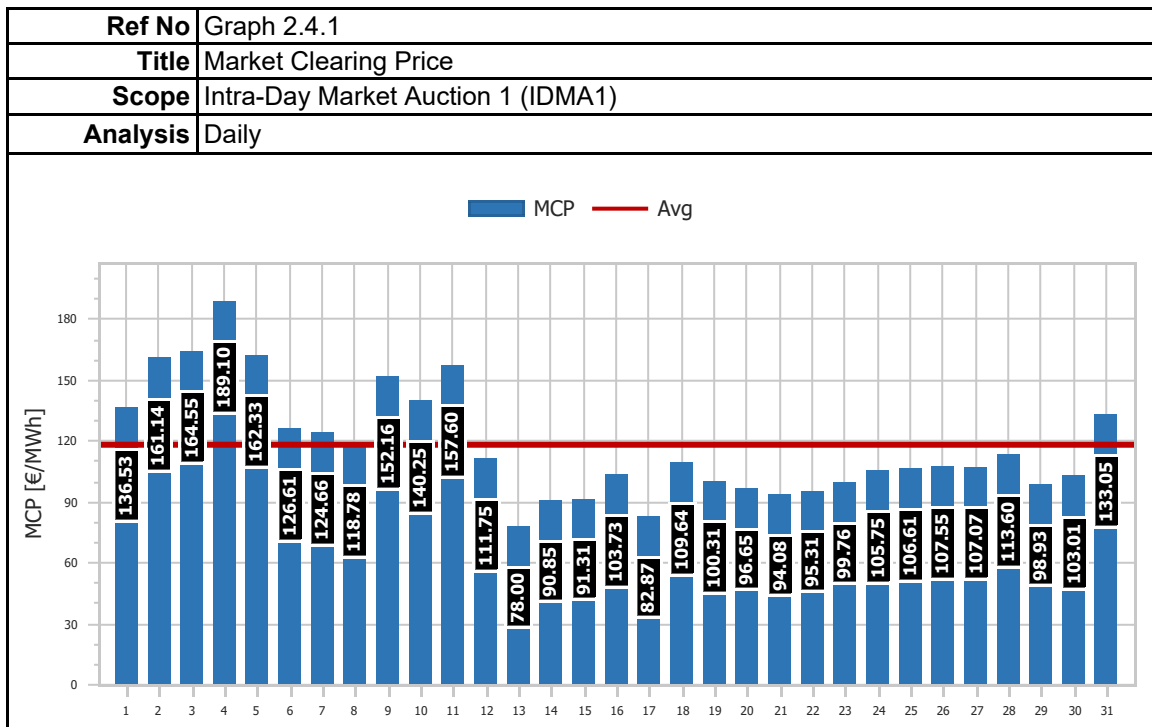
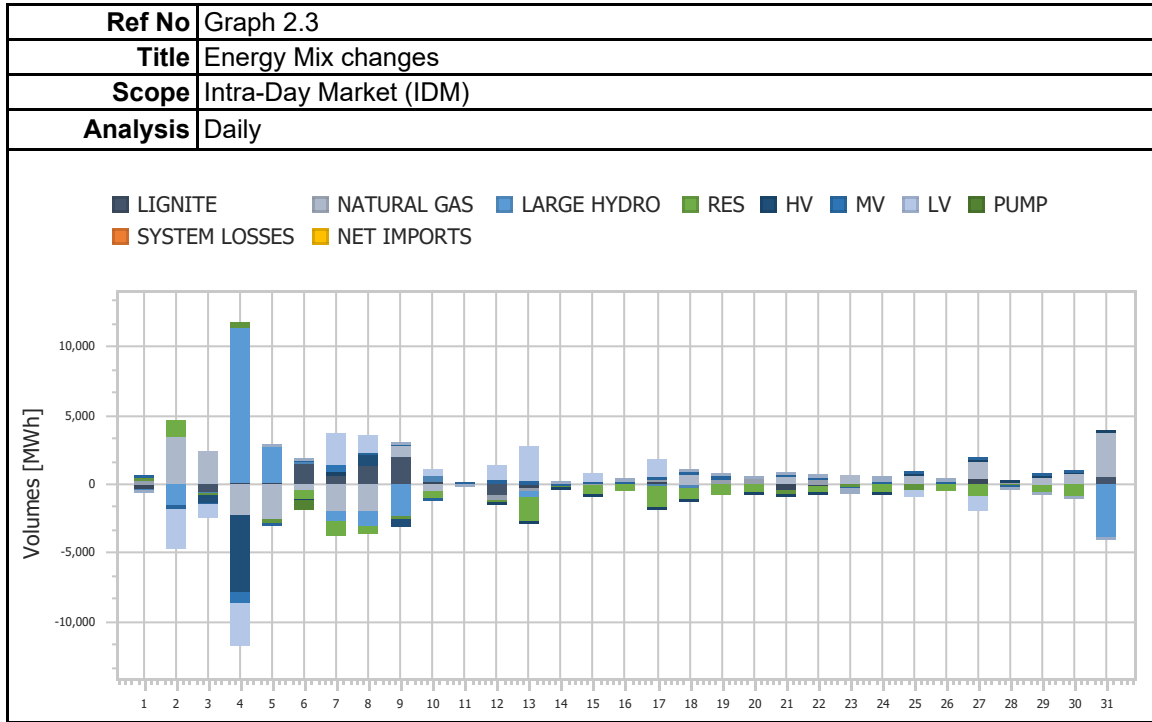




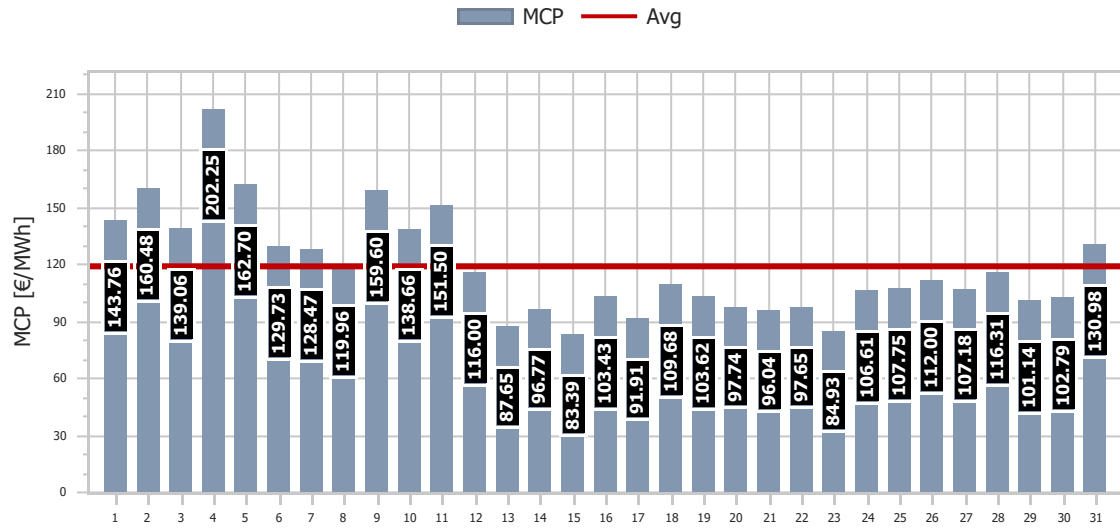


## 2. Intra-Day Market (IDM)

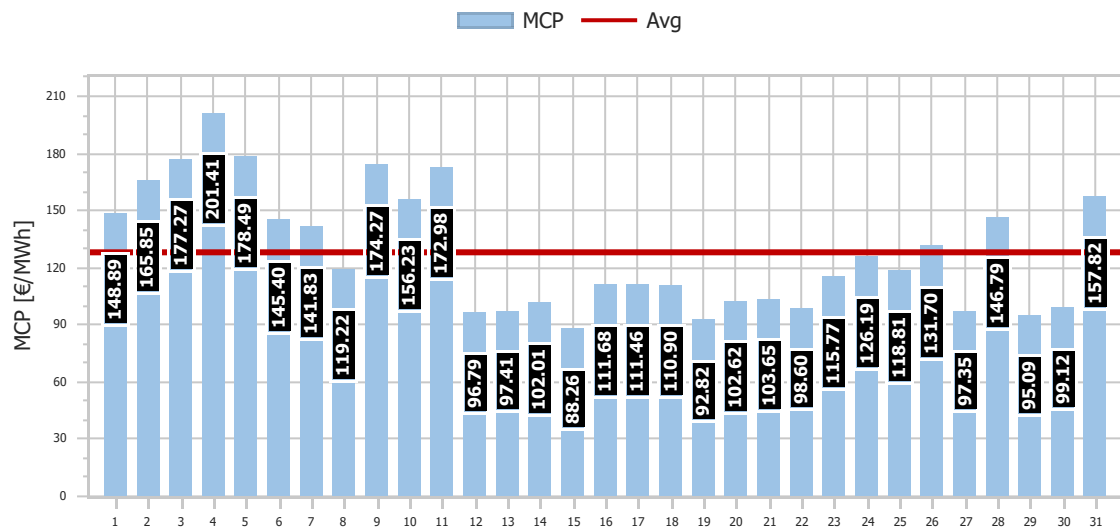




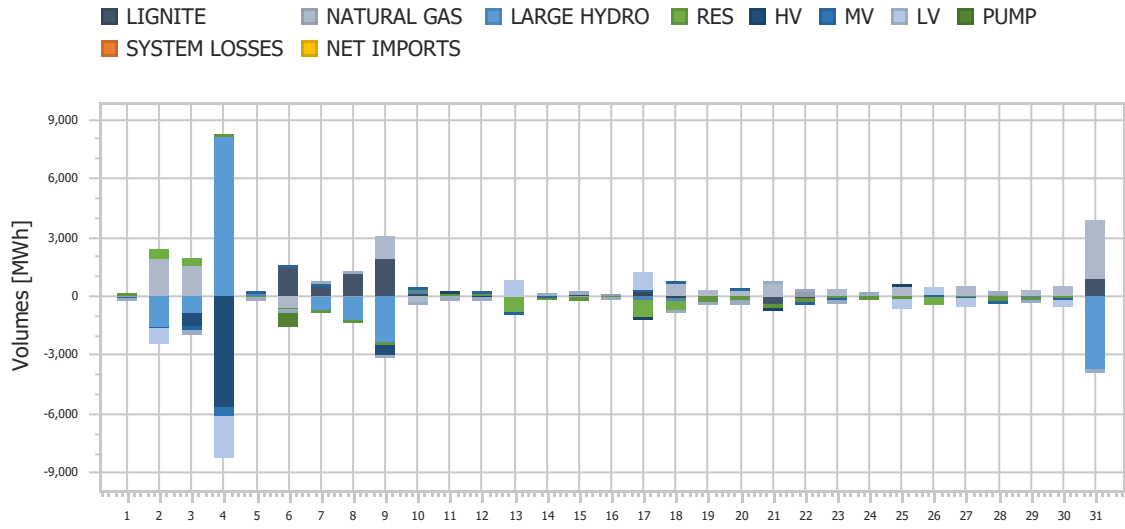
<b>Ref No</b>	Graph 2.4.2
<b>Title</b>	Market Clearing Price
<b>Scope</b>	Intra-Day Market Auction 2 (IDMA2)
<b>Analysis</b>	Daily



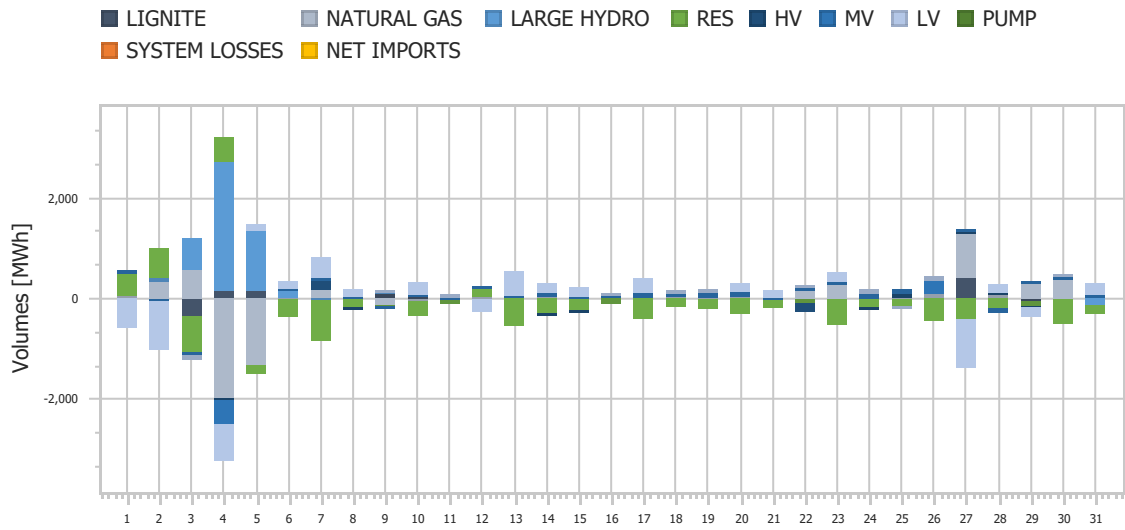
<b>Ref No</b>	Graph 2.4.3
<b>Title</b>	Market Clearing Price
<b>Scope</b>	Intra-Day Market Auction 3 (IDMA3)
<b>Analysis</b>	Daily



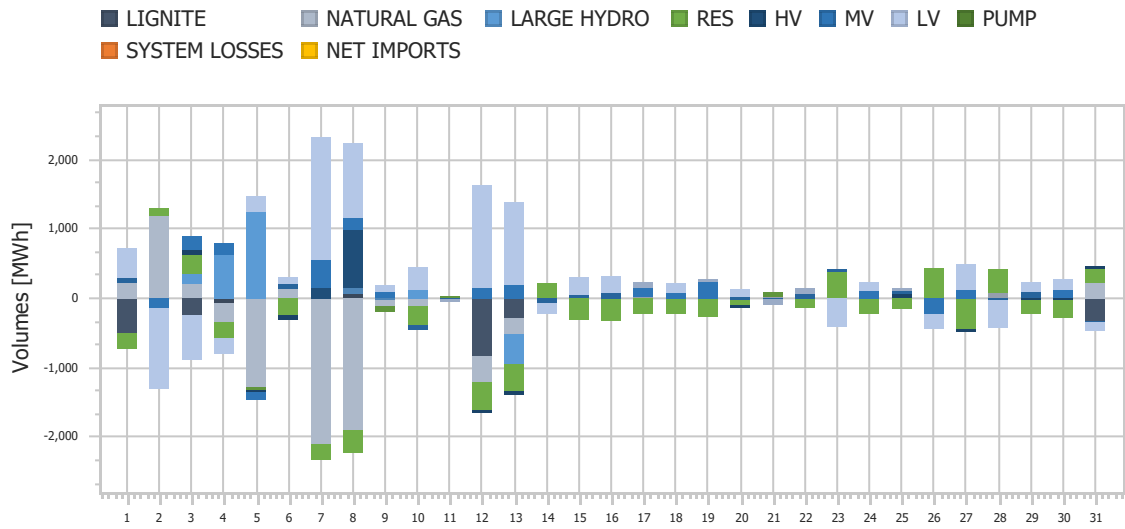
<b>Ref No</b>	Graph 2.5.1
<b>Title</b>	IDM Energy Mix Changes
<b>Scope</b>	Intra-Day Market Auction 1 (IDMA1)
<b>Analysis</b>	Daily



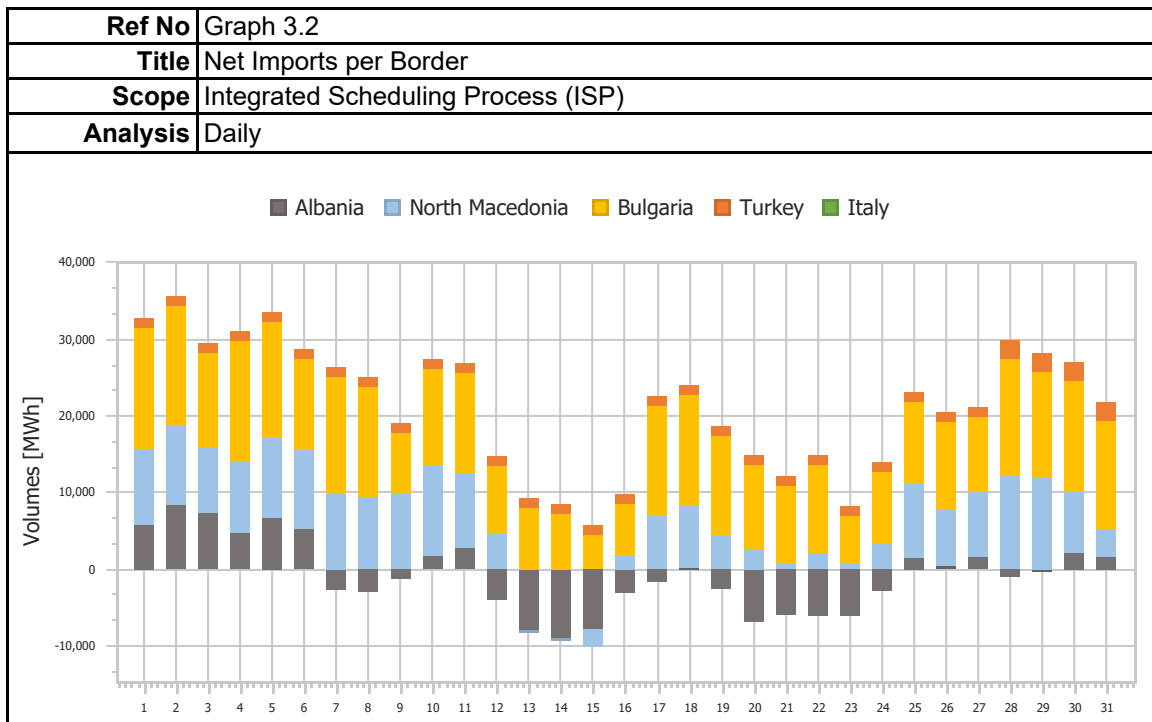
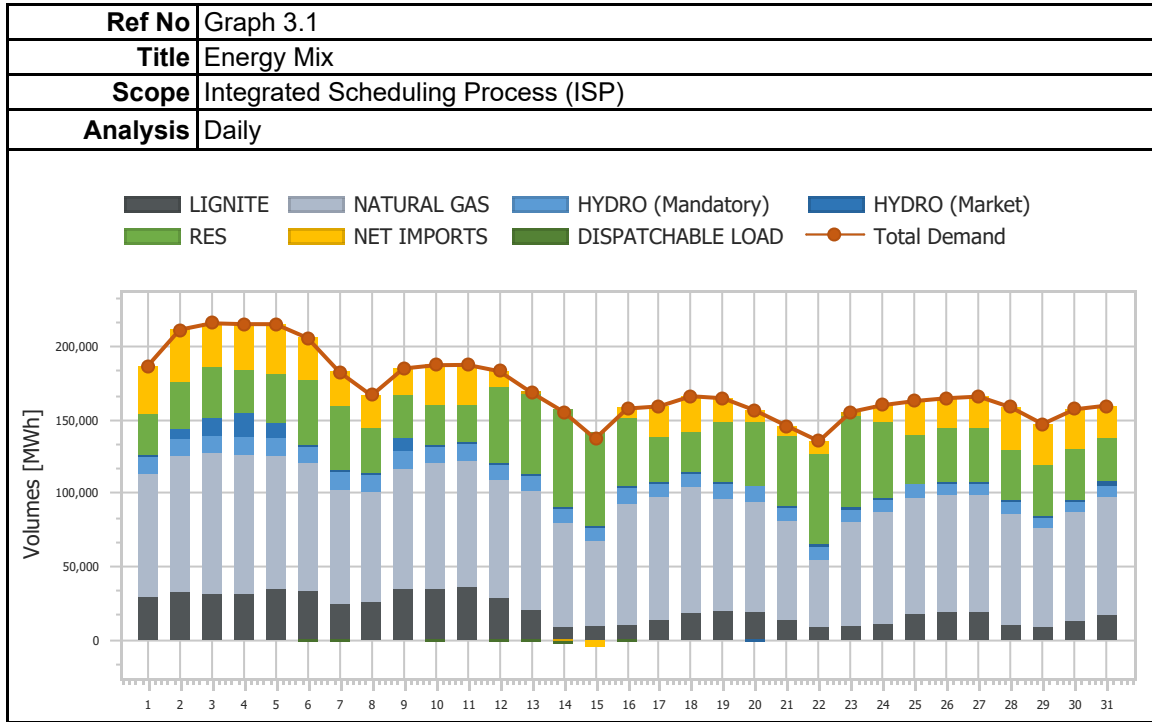
<b>Ref No</b>	Graph 2.5.2
<b>Title</b>	IDM Energy Mix Changes
<b>Scope</b>	Intra-Day Market Auction 2 (IDMA2)
<b>Analysis</b>	Daily



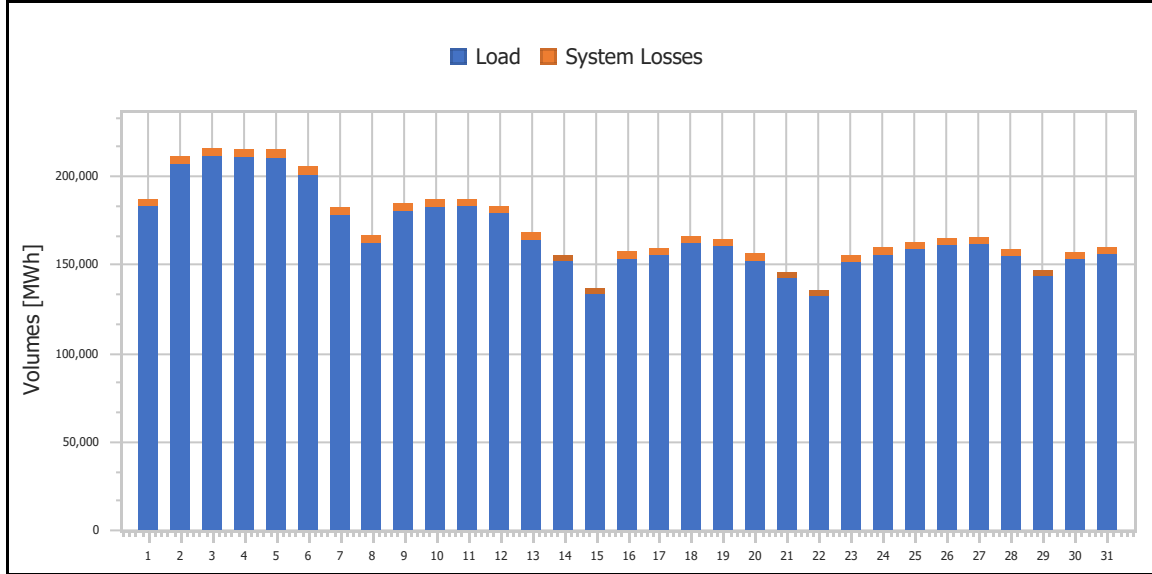
<b>Ref No</b>	Graph 2.5.3
<b>Title</b>	IDM Energy Mix Changes
<b>Scope</b>	Intra-Day Market Auction 3 (IDMA3)
<b>Analysis</b>	Daily



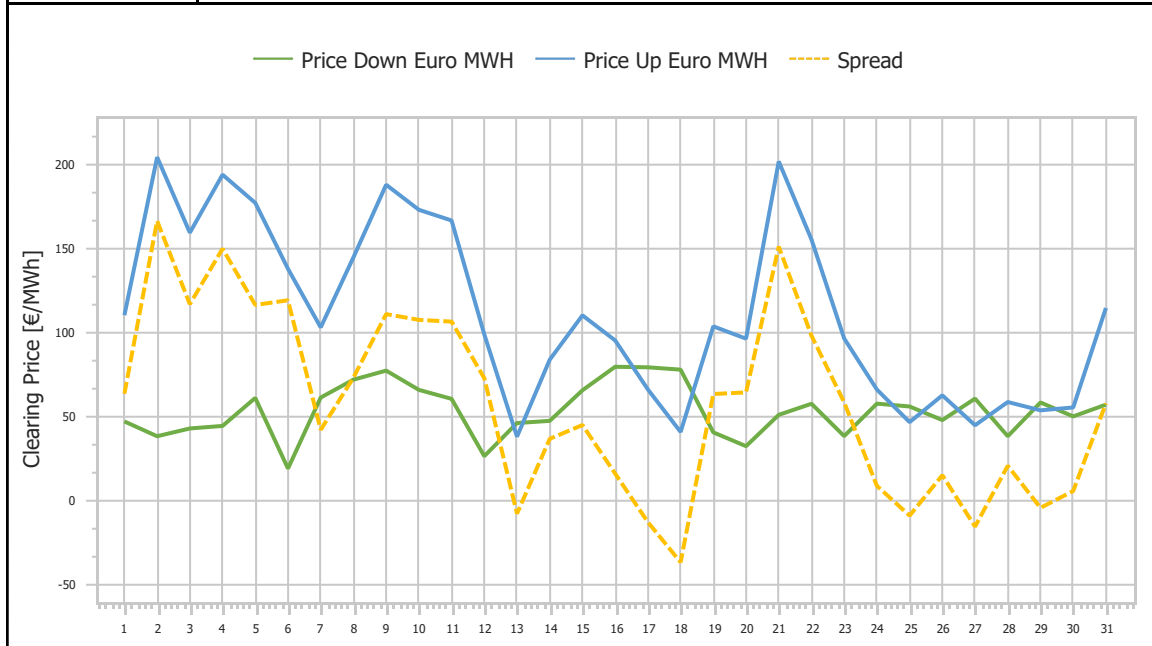
### 3. Integrated Scheduling Process (ISP)



<b>Ref No</b>	Graph 3.3
<b>Title</b>	Demand & System Losses
<b>Scope</b>	Integrated Scheduling Process (ISP)
<b>Analysis</b>	Daily

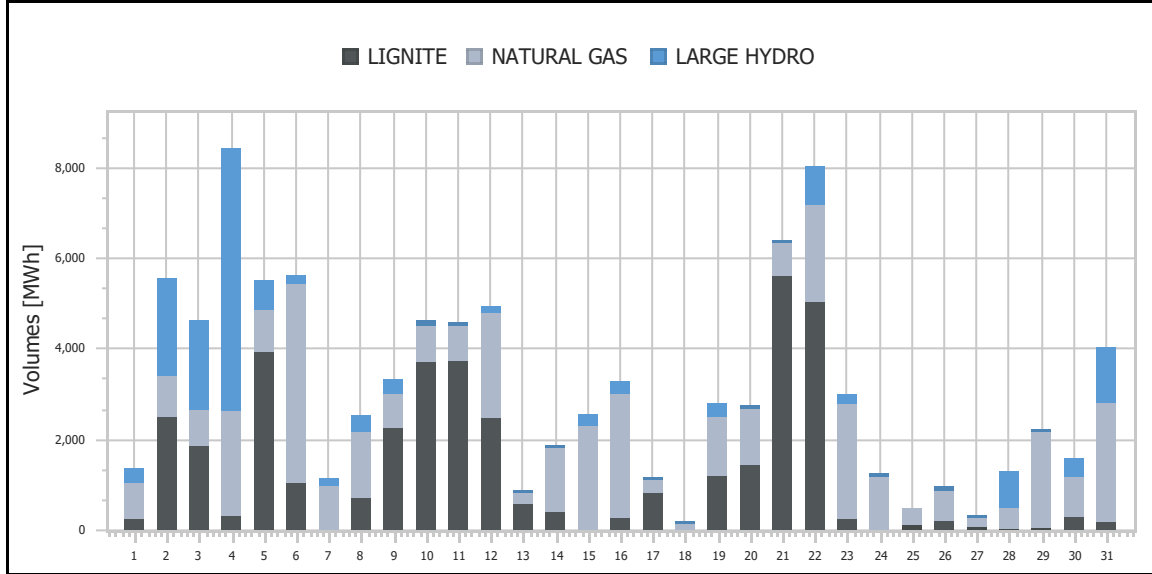


<b>Ref No</b>	Graph 3.4
<b>Title</b>	Clearing Prices
<b>Scope</b>	Integrated Scheduling Process (ISP)
<b>Analysis</b>	Daily

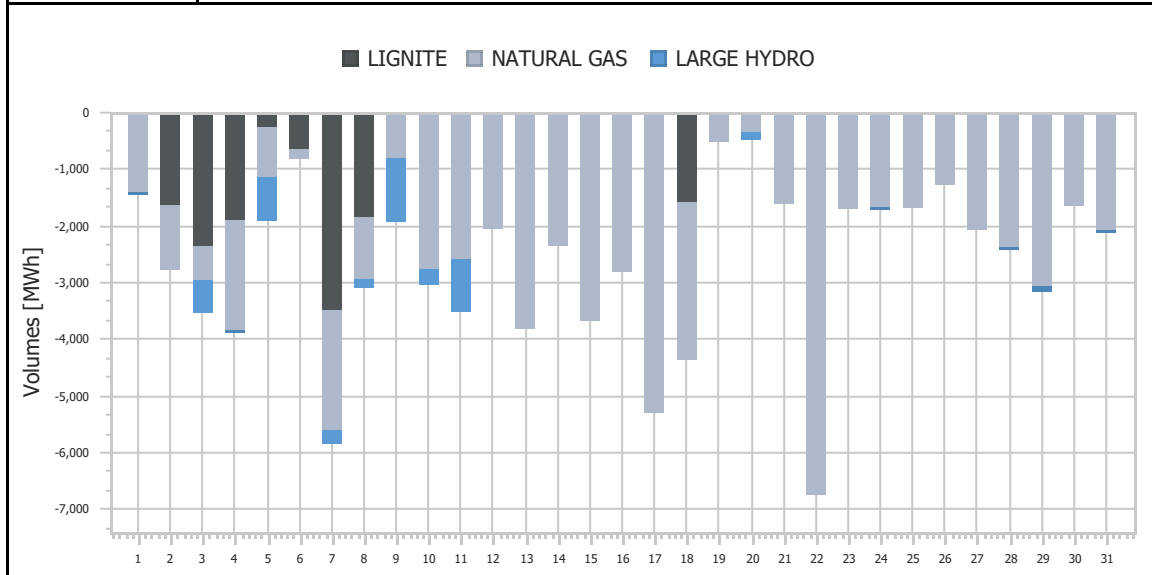




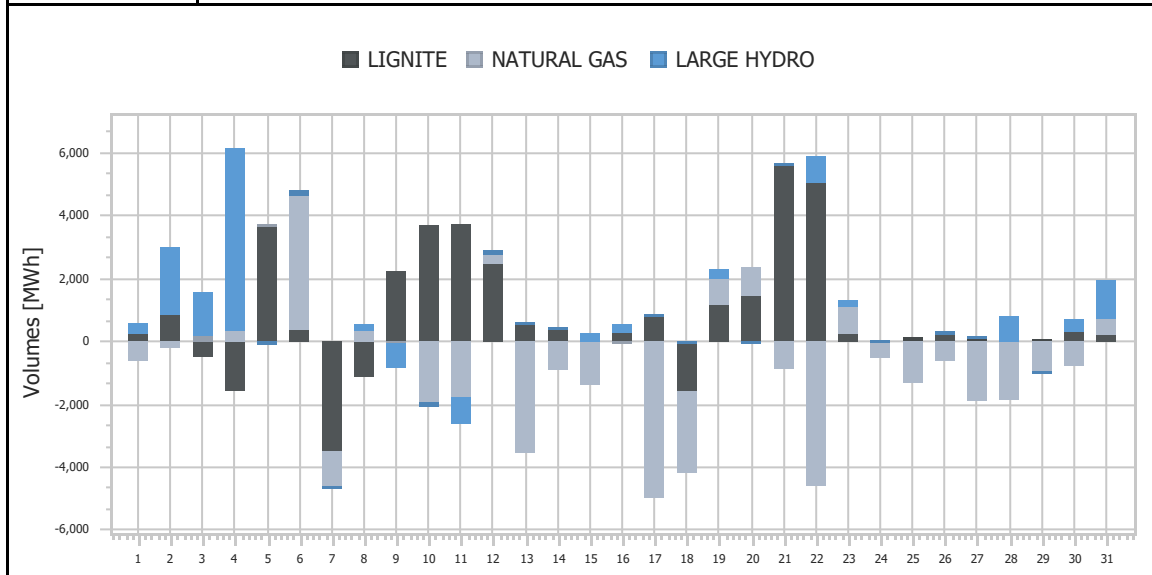
<b>Ref No</b>	Graph 3.5
<b>Title</b>	Upward Activated Balancing energy
<b>Scope</b>	Integrated Scheduling Process (ISP)
<b>Analysis</b>	Daily



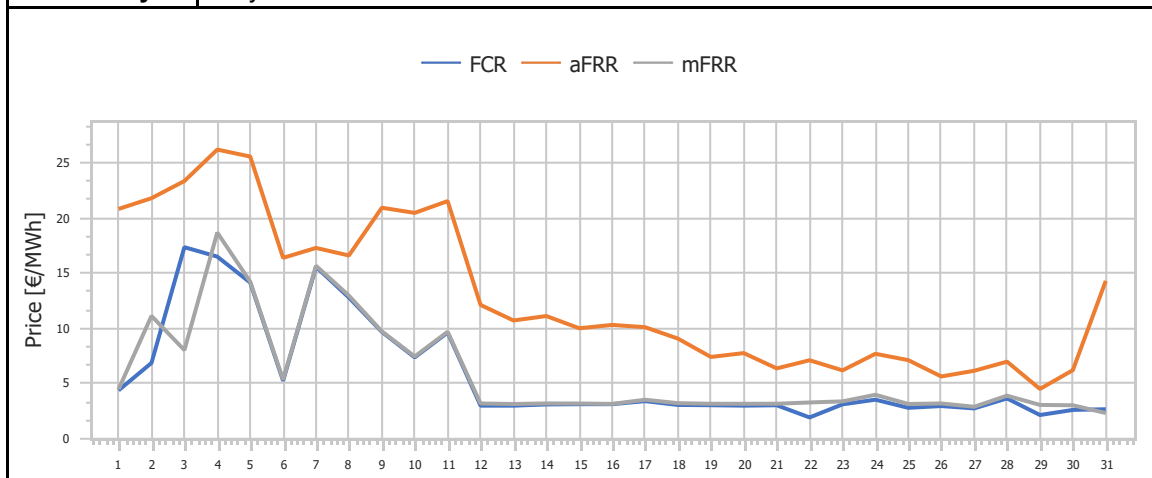
<b>Ref No</b>	Graph 3.6
<b>Title</b>	Downward Activated Balancing energy
<b>Scope</b>	Integrated Scheduling Process (ISP)
<b>Analysis</b>	Daily



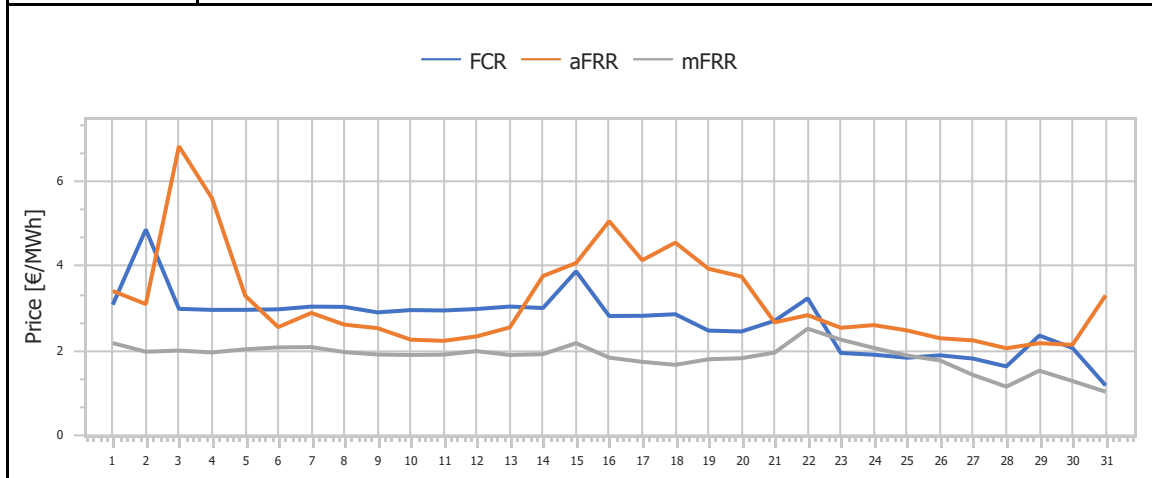
<b>Ref No</b>	Graph 3.7
<b>Title</b>	Net Activated Balancing energy
<b>Scope</b>	Integrated Scheduling Process (ISP)
<b>Analysis</b>	Daily



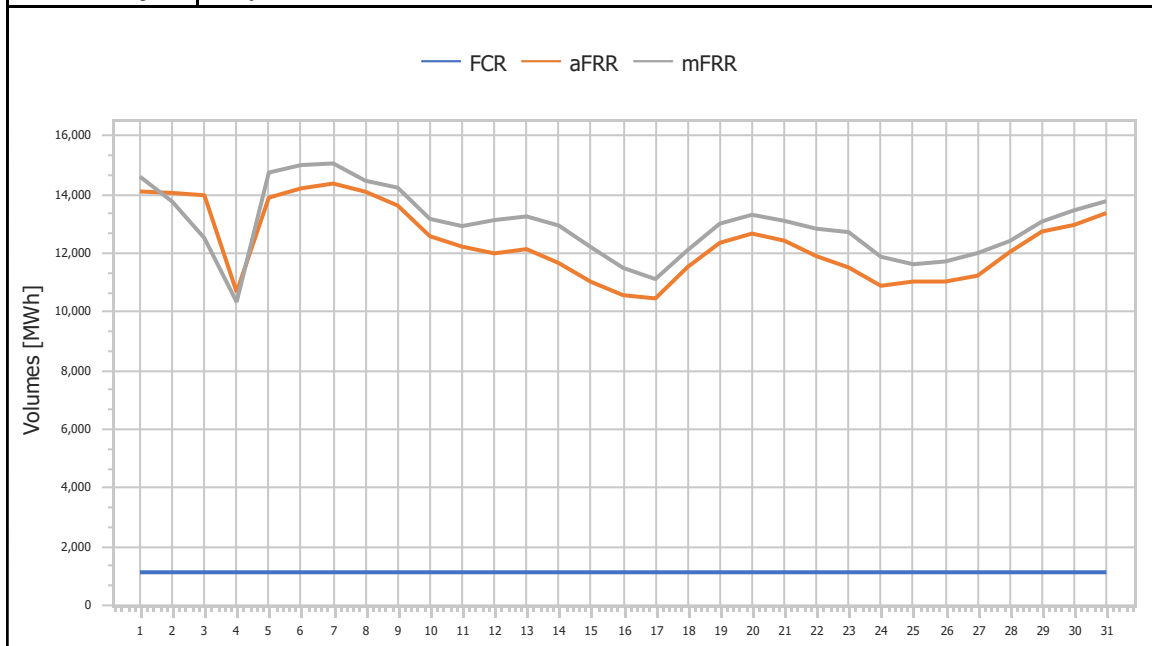
<b>Ref No</b>	Graph 3.8
<b>Title</b>	Upward Capacity Reserves Prices
<b>Scope</b>	Integrated Scheduling Process (ISP)
<b>Analysis</b>	Daily

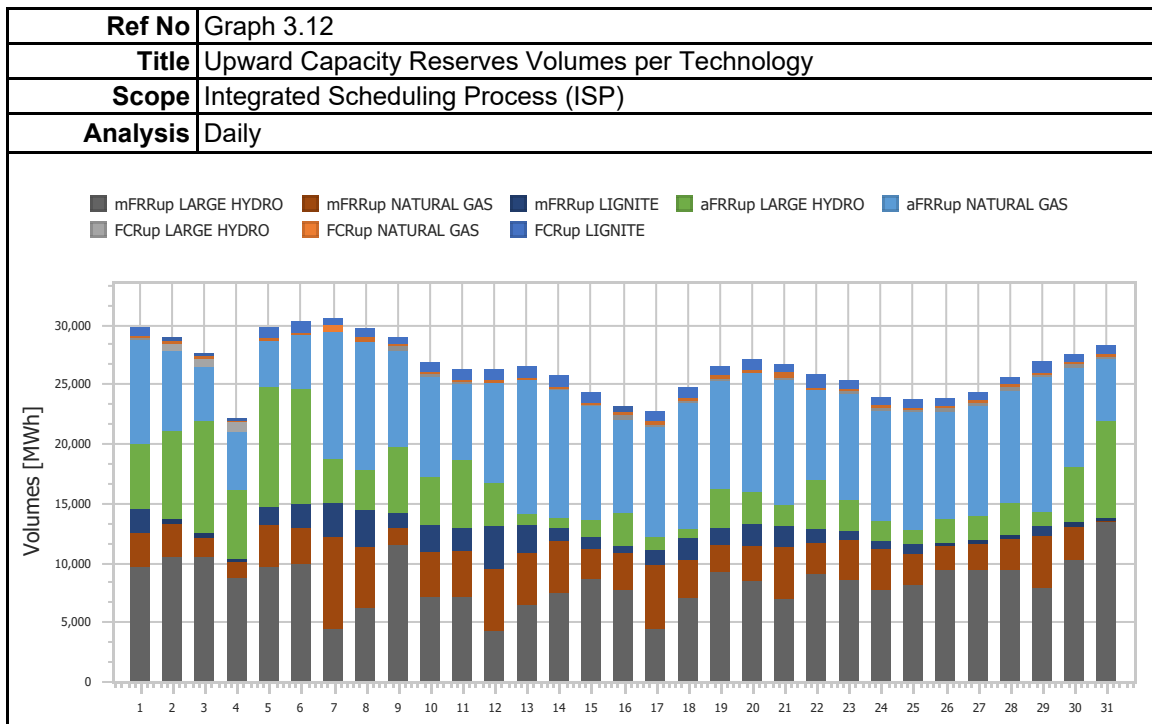
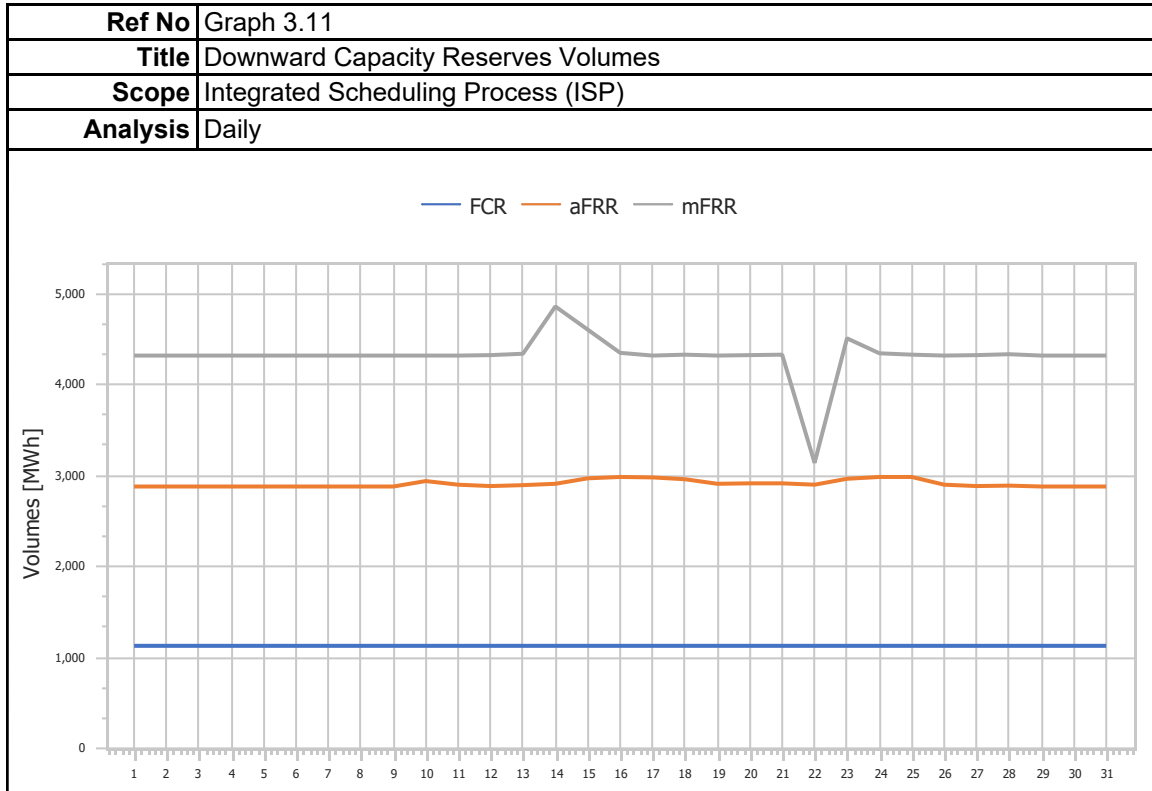


<b>Ref No</b>	Graph 3.9
<b>Title</b>	Downward Capacity Reserves Prices
<b>Scope</b>	Integrated Scheduling Process (ISP)
<b>Analysis</b>	Daily

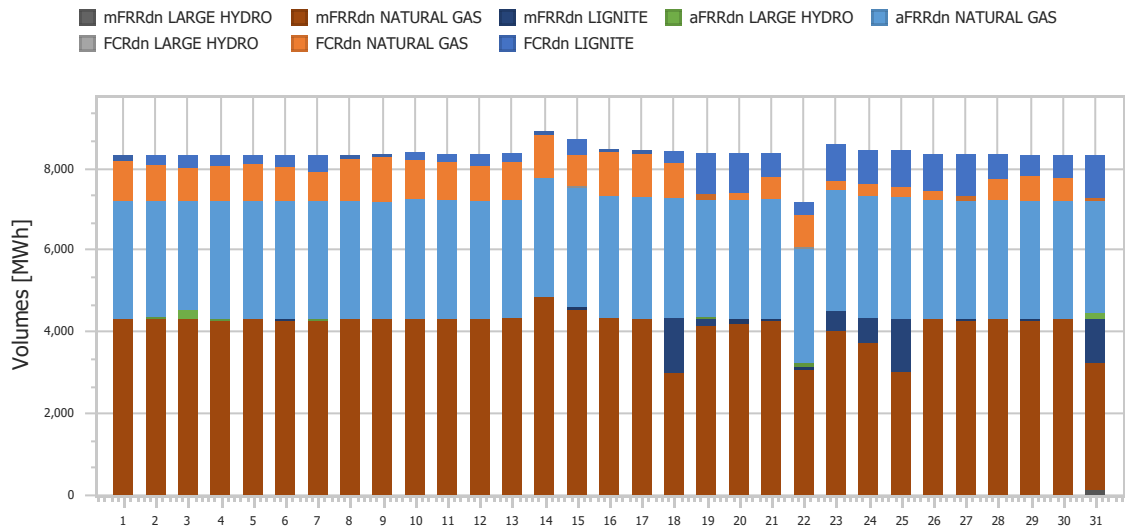


<b>Ref No</b>	Graph 3.10
<b>Title</b>	Upward Capacity Reserves Volumes
<b>Scope</b>	Integrated Scheduling Process (ISP)
<b>Analysis</b>	Daily

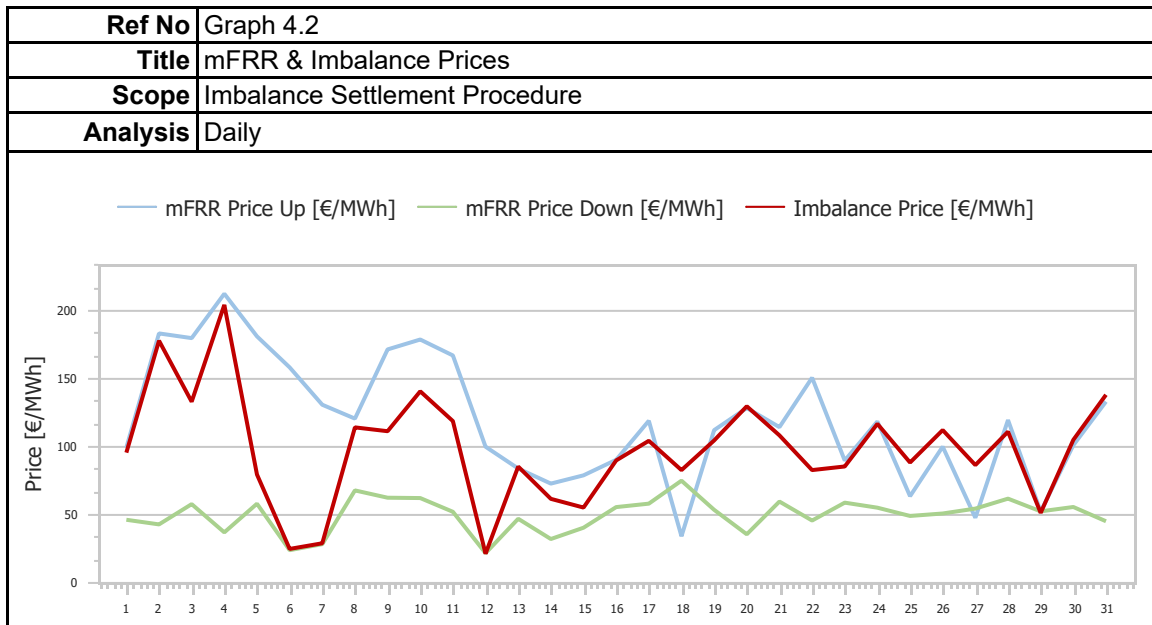
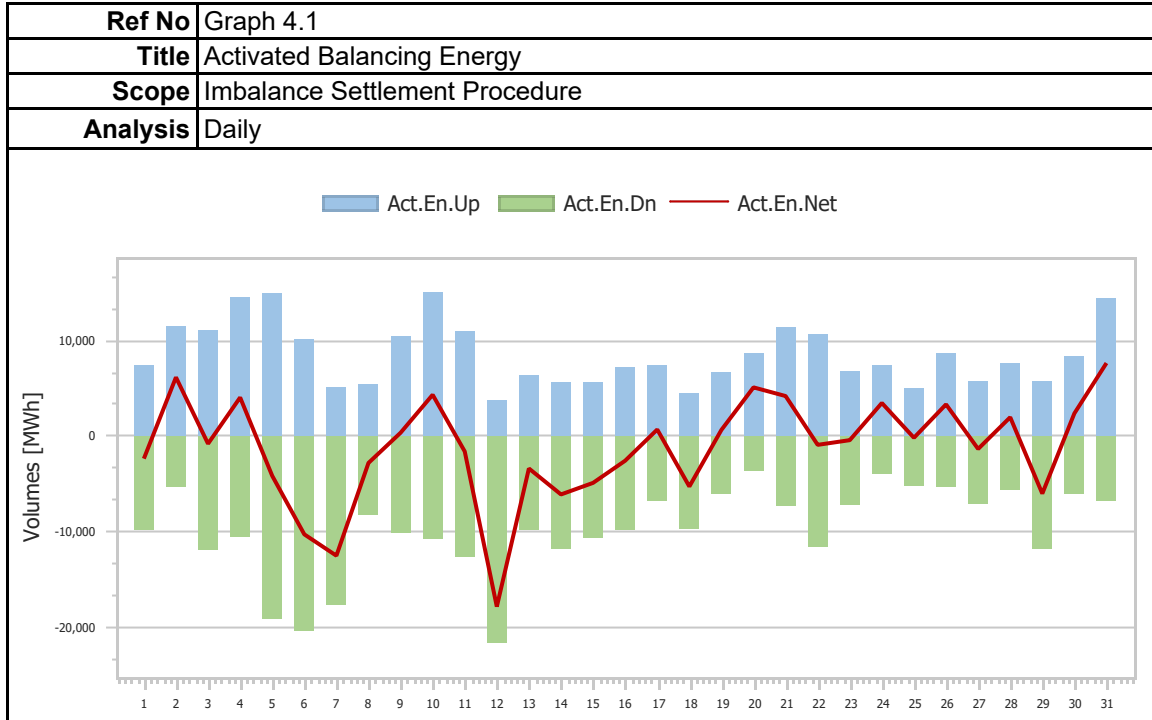




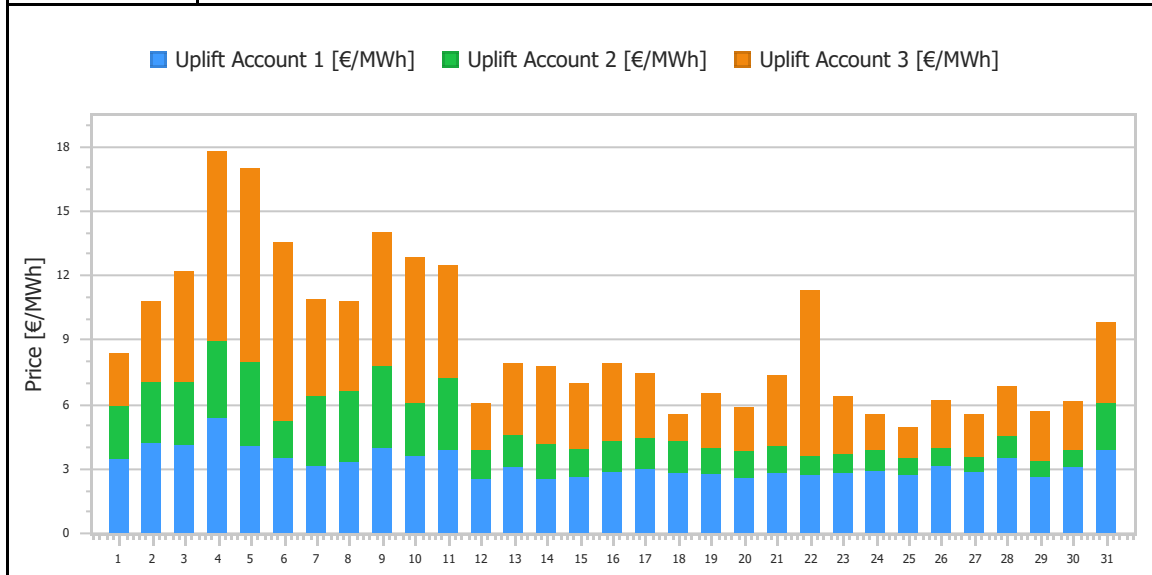
<b>Ref No</b>	Graph 3.13
<b>Title</b>	Downward Capacity Reserves Quantities per Type & Technology
<b>Scope</b>	Integrated Scheduling Process (ISP)
<b>Analysis</b>	Daily



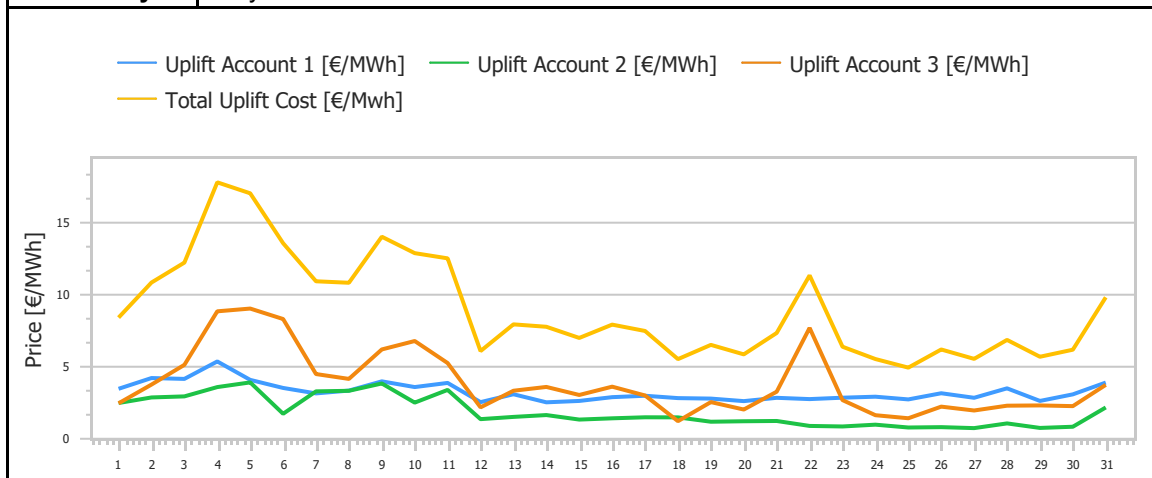
### 4. Imbalance Settlement Procedure



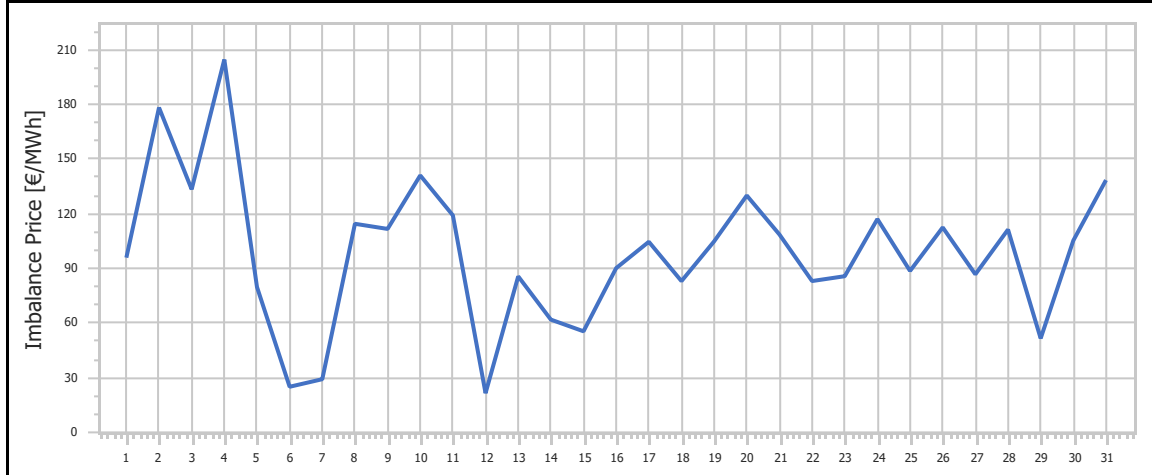
<b>Ref No</b>	Graph 4.3
<b>Title</b>	Uplift Accounts Cost
<b>Scope</b>	Imbalance Settlement Procedure
<b>Analysis</b>	Daily



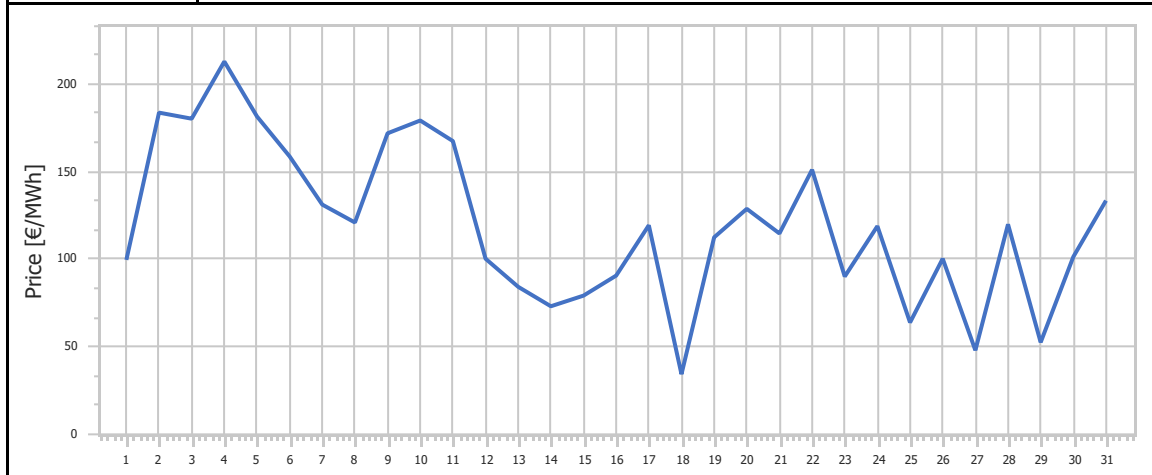
<b>Ref No</b>	Graph 4.4
<b>Title</b>	Uplift Accounts Cost
<b>Scope</b>	Imbalance Settlement Procedure
<b>Analysis</b>	Daily



<b>Ref No</b>	Graph 4.5
<b>Title</b>	Imbalance Price
<b>Scope</b>	Imbalance Settlement Procedure
<b>Analysis</b>	Daily

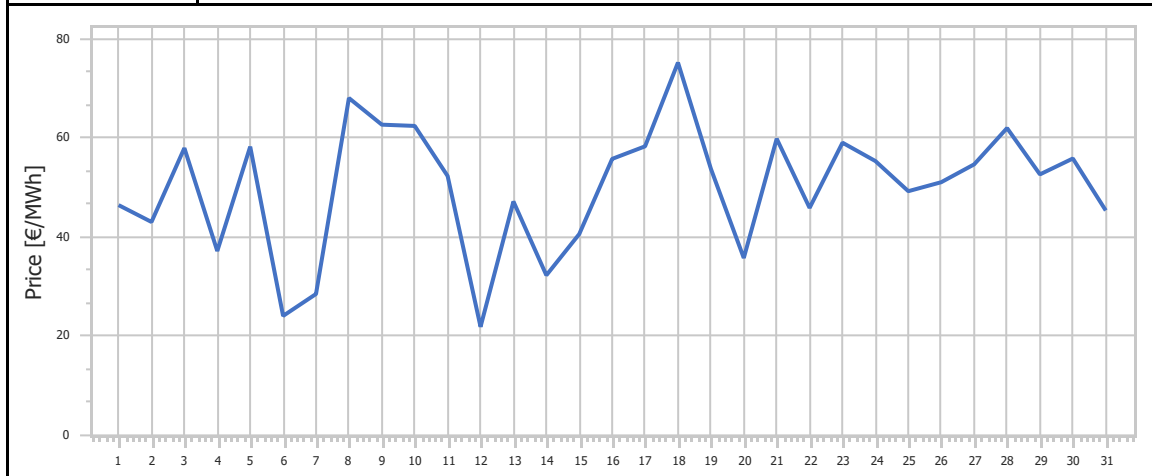


<b>Ref No</b>	Graph 4.6
<b>Title</b>	mFRR Up Price
<b>Scope</b>	Imbalance Settlement Procedure
<b>Analysis</b>	Daily

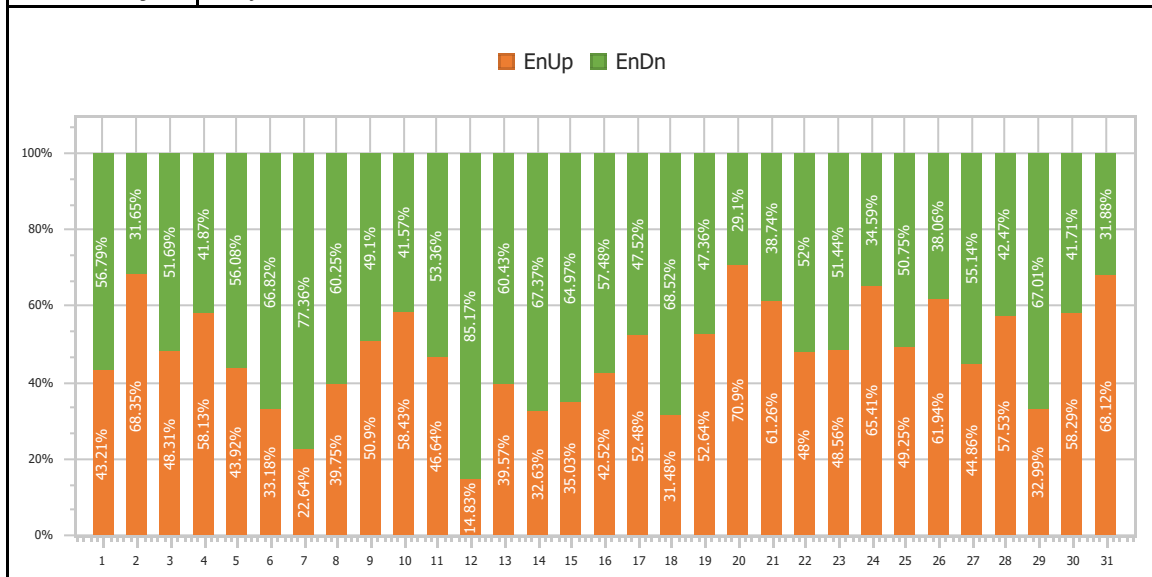




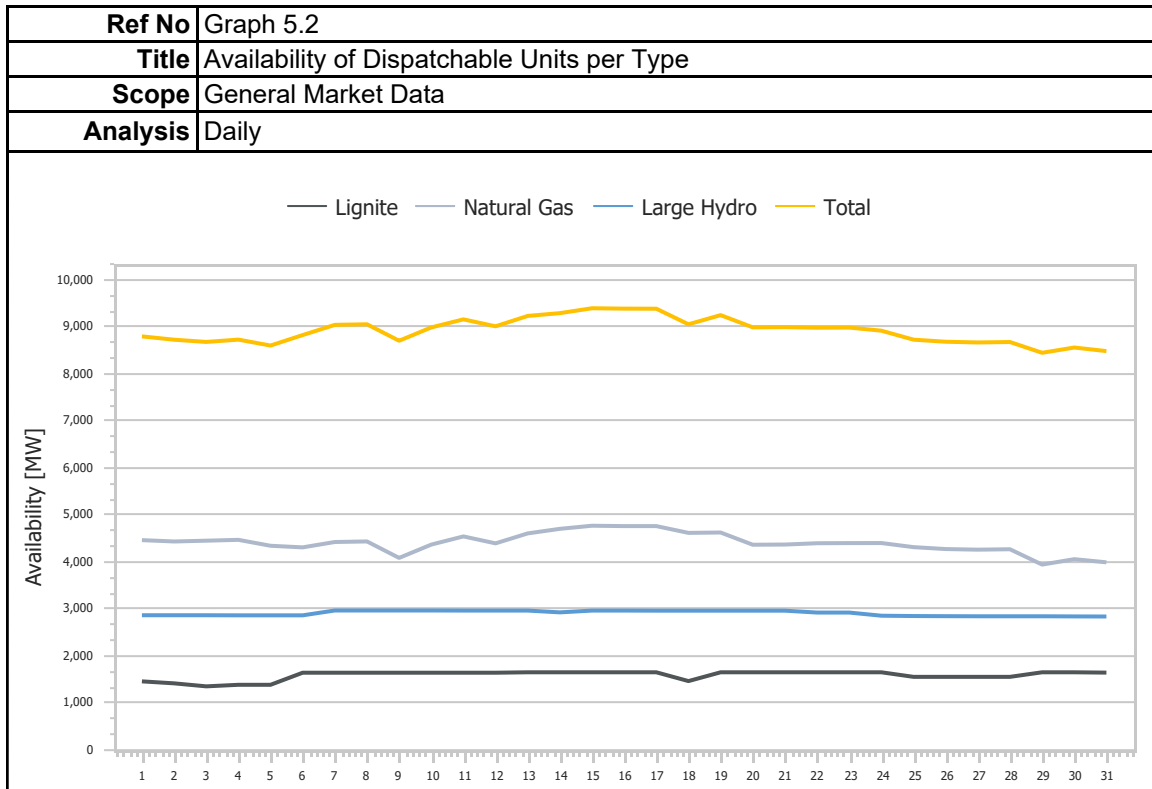
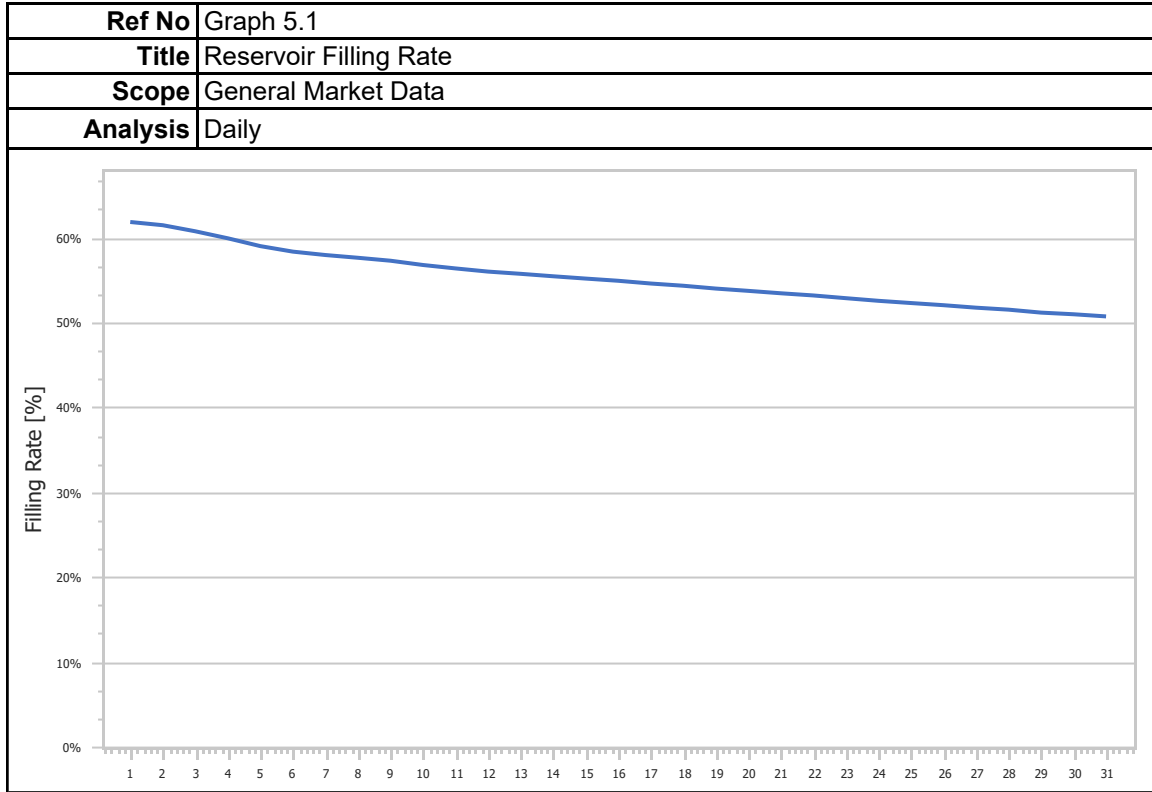
<b>Ref No</b>	Graph 4.7
<b>Title</b>	mFRR Down Price
<b>Scope</b>	Imbalance Settlement Procedure
<b>Analysis</b>	Daily



<b>Ref No</b>	Graph 4.8
<b>Title</b>	Balancing Energy Activation Direction
<b>Scope</b>	Imbalance Settlement Procedure
<b>Analysis</b>	Daily



### 5. General Market Data



## 1. Statistics

<b>Ref No</b>	Table 1.1			
<b>Title</b>	Market Shares per Aggregated Classification - SELL			
<b>Scope</b>	Day Ahead Market (DAM)			
<b>Analysis</b>	Monthly			
Classification	Quantity [MWh]	Share [%]	Value [EUR]	Share [%]
Lignite	617,553.218	11.11%	81,458,765.30€	11.70%
Crete Conventional	-	0.00%	- €	0.00%
Natural Gas	2,460,950.188	44.27%	308,251,948.79€	44.26%
Large Hydro	381,955.113	6.87%	52,986,541.09€	7.61%
RES	1,307,345.412	23.52%	154,417,596.77€	22.17%
Crete Renewables	-	0.00%	- €	0.00%
Imports	790,540.040	14.22%	99,349,100.45€	14.26%
<b>Total</b>	<b>5,558,343.967</b>	<b>100.00%</b>	<b>696,463,952.40€</b>	<b>100.00%</b>

<b>Ref No</b>	Table 1.2						
<b>Title</b>	Statistics per Aggregated Classification - SELL						
<b>Scope</b>	Day Ahead Market (DAM)						
<b>Analysis</b>	Monthly						
	MCP [€/MWh]	Total [MWh]	Lignite [MWh]	Natural Gas [MWh]	Hydro [MWh]	RES [MWh]	Imports [MWh]
<b>Total</b>	-	5,558,343.97	617,553.22	2,460,950.19	381,955.11	1,307,345.41	790,540.04
<b>Average</b>	121.72	179,301.42	19,921.07	79,385.49	12,321.13	42,172.43	25,501.29
<b>Min</b>	96.18	147,131.41	4,036.08	49,592.20	8,156.00	26,714.72	10,592.21
<b>Min day</b>	15	22	22	22	30	11	15
<b>Max</b>	185.59	219,076.50	32,715.78	96,982.74	23,887.12	70,235.09	37,167.80
<b>Max day</b>	4	3	4	4	9	14	2
<b>Spread</b>	89.42	71,945.09	28,679.70	47,390.55	15,731.12	43,520.37	26,575.59
<b>Standard Deviation</b>	22.25	19,190.76	9,181.52	9,901.90	3,769.85	12,694.55	7,444.11

<b>Ref No</b>	Table 1.3			
<b>Title</b>	Market Shares per Aggregated Classification - BUY			
<b>Scope</b>	Day Ahead Market (DAM)			
<b>Analysis</b>	Monthly			
Classification	Quantity [MWh]	Share [%]	Value [EUR]	Share [%]
System Losses	114,526.500	2.06%	14,449,383.70€	2.07%
Crete Load	-	0.00%	- €	0.00%
HV Load	634,329.534	11.41%	75,991,188.61€	10.91%
MV Load	1,062,190.027	19.11%	133,410,668.93€	19.16%
LV Load	3,543,925.921	63.76%	449,757,831.24€	64.58%
PUMP	3,785.000	0.07%	339,307.35€	0.05%
Exports	199,582.890	3.59%	22,515,141.55€	3.23%
<b>Total</b>	<b>5,558,339.876</b>	<b>100.00%</b>	<b>696,463,521.37€</b>	<b>100.00%</b>

<b>Ref No</b>	Table 1.4							
<b>Title</b>	Statistics per Aggregated Classification - BUY							
<b>Scope</b>	Day Ahead Market (DAM)							
<b>Analysis</b>	Monthly							
	MCP [€/MWh]	Total [MWh]	Sys Losses [MWh]	HV [MWh]	MV [MWh]	LV [MWh]	PUMP [MWh]	Exports [MWh]
<b>Total</b>	-	5,558,339.88	114,526.50	634,329.53	1,062,190.03	3,543,925.92	3,785.00	199,582.89
<b>Average</b>	121.72	179,301.29	3,817.55	20,462.24	34,264.19	114,320.19	630.83	6,438.16
<b>Min</b>	96.18	147,131.30	2,891.00	15,925.14	23,738.54	89,170.52	330.00	1,527.00
<b>Min day</b>	15	22	22	4	15	22	12	1
<b>Max</b>	185.59	219,076.48	4,894.50	23,710.40	45,481.79	145,058.35	910.00	14,986.73
<b>Max day</b>	4	3	6	28	3	5	14	15
<b>Spread</b>	89.42	71,945.17	2,003.50	7,785.26	21,743.26	55,887.84	580.00	13,459.73
<b>Standard Deviation</b>	22.25	19,190.80	448.92	1,933.52	5,352.99	16,604.59	195.93	3,752.84

## 2. Market Shares

<b>Ref No</b>	Table 2.1.1			
<b>Title</b>	Market Shares - Upward Capacity Reserves Volumes per Type			
<b>Scope</b>	Balancing Market (BM)			
<b>Analysis</b>	Monthly			
<b>Type</b>	<b>Quantity [MW]</b>	<b>Share [%]</b>	<b>Value [EUR]</b>	<b>Share [%]</b>
aFRR	1,498,530.240	57.81%	6,333,604.77€	67.53%
FCR	123,839.220	4.78%	302,569.21€	3.23%
mFRR	969,747.730	37.41%	2,742,925.57€	29.25%
<b>Total</b>	<b>2,592,117.200</b>	<b>100.00%</b>	<b>9,379,099.55€</b>	<b>100.00%</b>

<b>Ref No</b>	Table 2.1.2			
<b>Title</b>	Market Shares - Downward Capacity Reserves per Type			
<b>Scope</b>	Balancing Market(BM)			
<b>Analysis</b>	Monthly			
<b>Type</b>	<b>Quantity [MW]</b>	<b>Share [%]</b>	<b>Value [EUR]</b>	<b>Share [%]</b>
aFRR	356,041.740	35.13%	445,133.04€	42.80%
FCR	132,761.350	13.10%	157,164.55€	15.11%
mFRR	524,616.850	51.77%	437,841.43€	42.09%
<b>Total</b>	<b>1,013,419.940</b>	<b>100.00%</b>	<b>1,040,139.01€</b>	<b>100.00%</b>

<b>Ref No</b>	Table 2.1.3				
<b>Title</b>	Market Shares - Upward Activated Balancing Energy per Type				
<b>Scope</b>	Balancing Market (BM)				
<b>Analysis</b>	Monthly				
Type	Quantity [MWh]	Share [%]	Value [EUR]	Share [%]	
aFRR	150,132.730	56.63%	24,167,092.62€	56.11%	
mFRR	114,961.180	43.37%	18,906,224.28€	43.89%	
<b>Total</b>	<b>265,093.910</b>	<b>100.00%</b>	<b>43,073,316.90€</b>	<b>100.00%</b>	

<b>Ref No</b>	Table 2.1.4				
<b>Title</b>	Market Shares - Downward Activated Balancing Energy per Type				
<b>Scope</b>	Balancing Market (BM)				
<b>Analysis</b>	Monthly				
Type	Quantity [MWh]	Share [%]	Value [EUR]	Share [%]	
aFRR	108,713.890	35.80%	4,684,340.50€	34.50%	
mFRR	194,953.910	64.20%	8,894,885.35€	65.50%	
<b>Total</b>	<b>303,667.800</b>	<b>100.00%</b>	<b>13,579,225.85€</b>	<b>100.00%</b>	

### 3. Market Overview

<b>Ref No</b>	Table 3.1
<b>Title</b>	Total Transactions Quantity per Market
<b>Scope</b>	DAM, IDM, Balancing Energy Market
<b>Analysis</b>	Monthly

Market	Quantity [MWh]	Share [%]
DAM	5,558,343.97	98.95%
IDMA1	49,305.41	0.88%
IDMA2	23,234.28	0.41%
IDMA3	25,096.62	0.45%
IDM (Total)	97,636.32	1.74%
Balancing Energy (Up)	265,093.91	4.72%
Balancing Energy (Dn)	303,667.80	5.41%
Balancing Energy (Total)	-38,573.89	-0.69%
<b>Total</b>	<b>5,617,406.40</b>	<b>100.00%</b>

<b>Ref No</b>	Table 3.2
<b>Title</b>	Total Transactions Value per Market
<b>Scope</b>	DAM, IDM, Balancing Energy Market
<b>Analysis</b>	Monthly

Market	Value [EUR]	Share [%]
DAM	696,463,952.40€	92.86%
IDMA1	7,033,899.44€	0.94%
IDMA2	3,061,605.77€	0.41%
IDMA3	3,512,638.97€	0.47%
IDM (Total)	13,608,144.18€	1.81%
Balancing Capacity (Up)	9,379,099.55€	1.25%
Balancing Capacity (Dn)	1,040,139.01€	0.14%
Balancing Capacity (Total)	10,419,238.57€	1.39%
Balancing Energy (Up)	43,073,316.90€	5.74%
Balancing Energy (Dn)	13,579,225.85€	1.81%
Balancing Energy (Total)	29,494,091.05€	3.93%
Balancing Market (Total)	39,913,329.62€	5.32%
<b>Total</b>	<b>749,985,426.20€</b>	<b>100.00%</b>