

# Market Monitoring Report

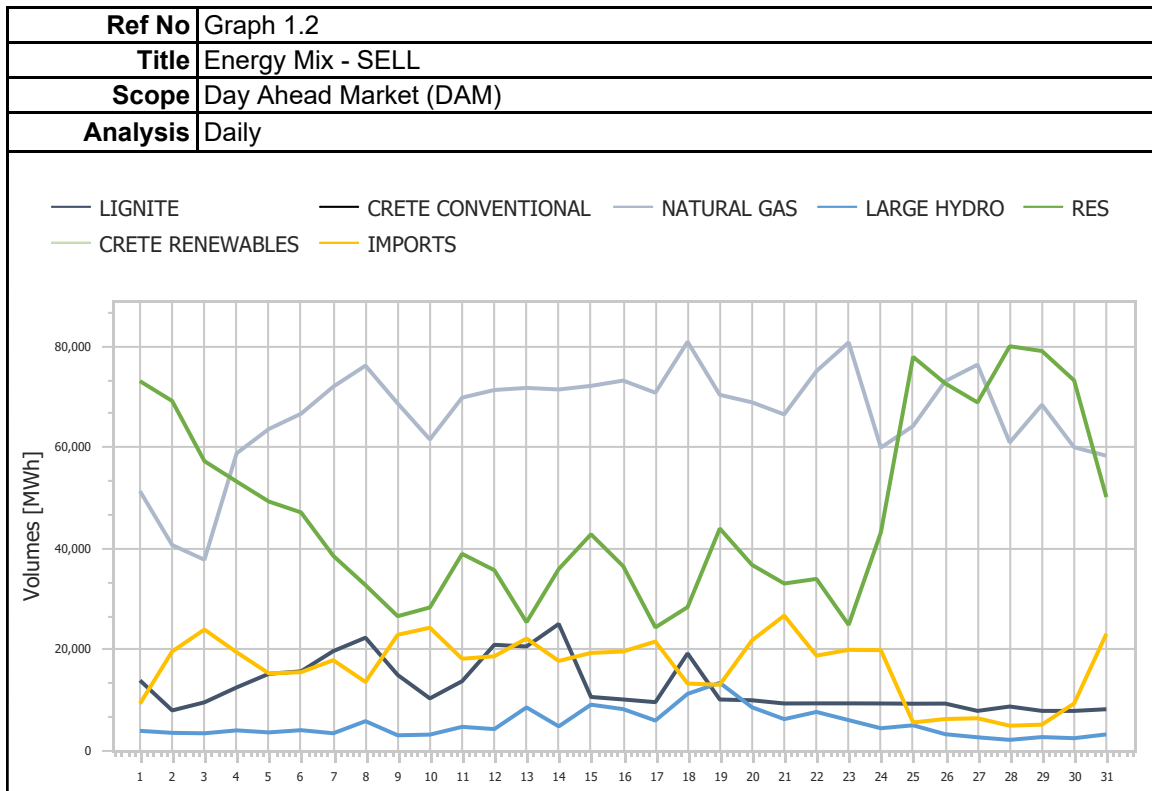
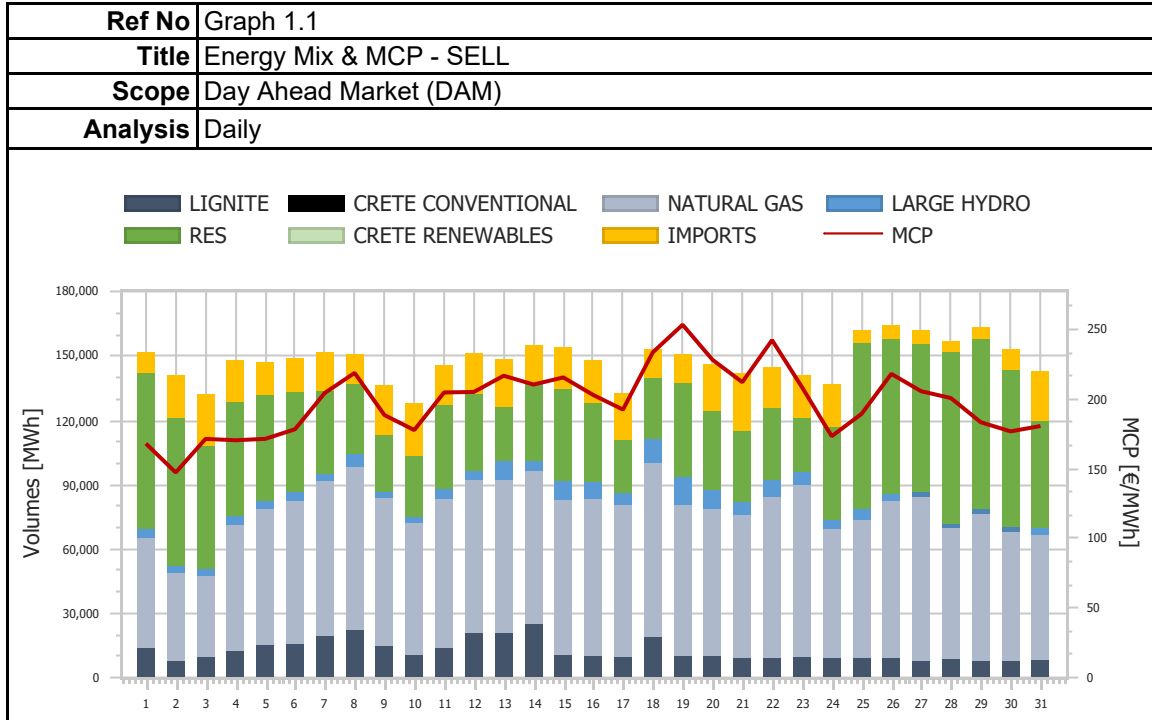
Monthly - Public - 2

**10-2021**

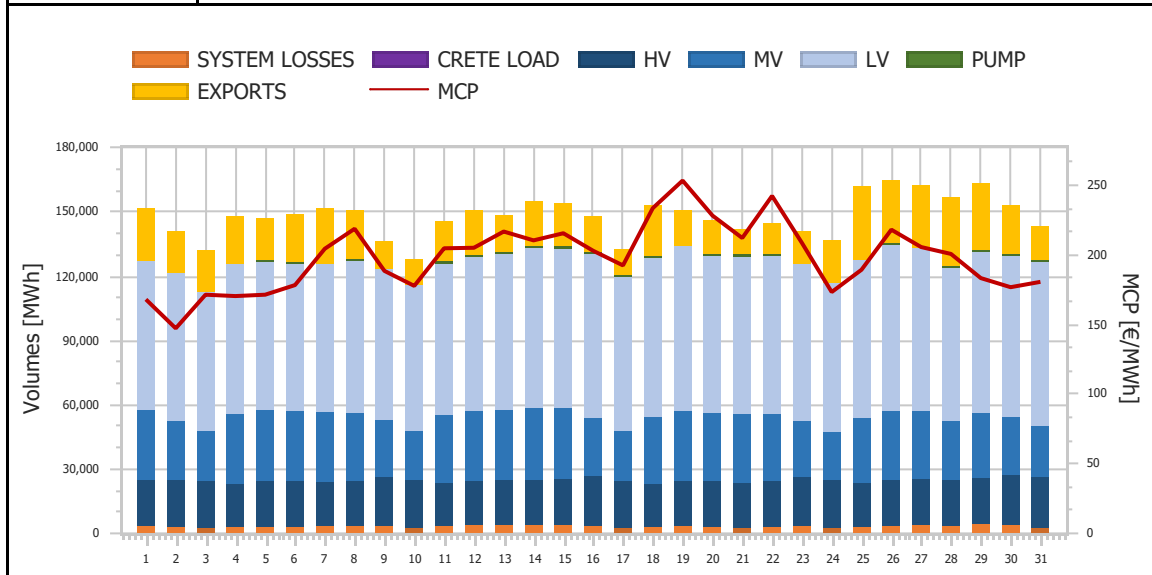


ΡΥΘΜΙΣΤΙΚΗ ΑΡΧΗ ΕΝΕΡΓΕΙΑΣ  
REGULATORY AUTHORITY FOR ENERGY

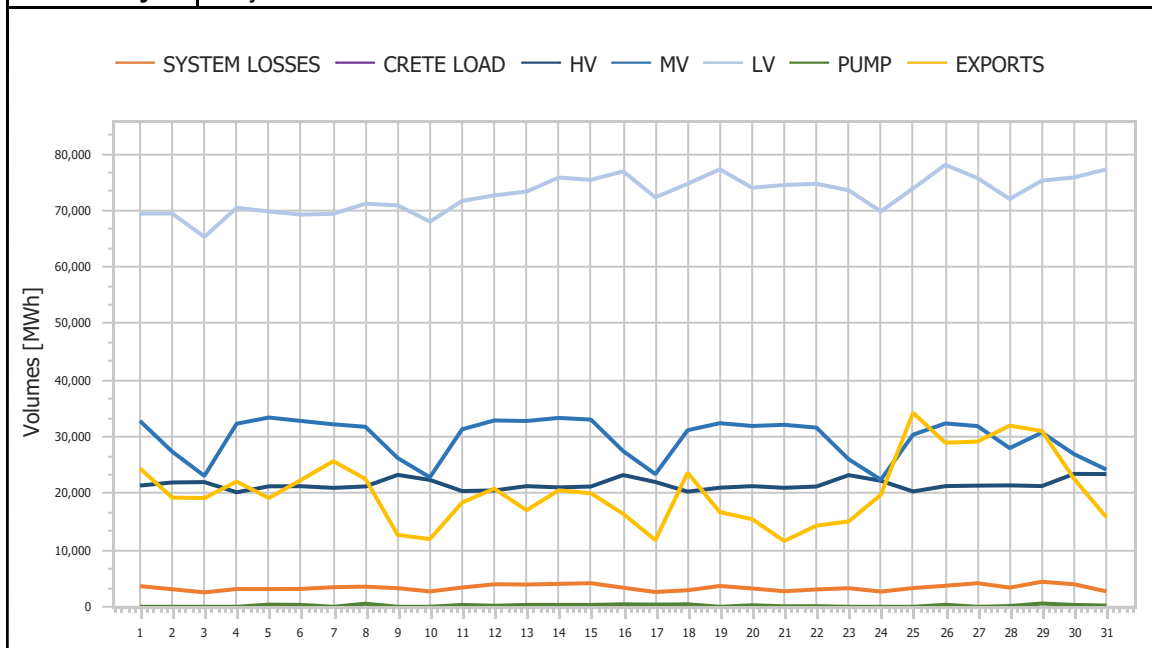
# 1. Day Ahead Market (DAM)



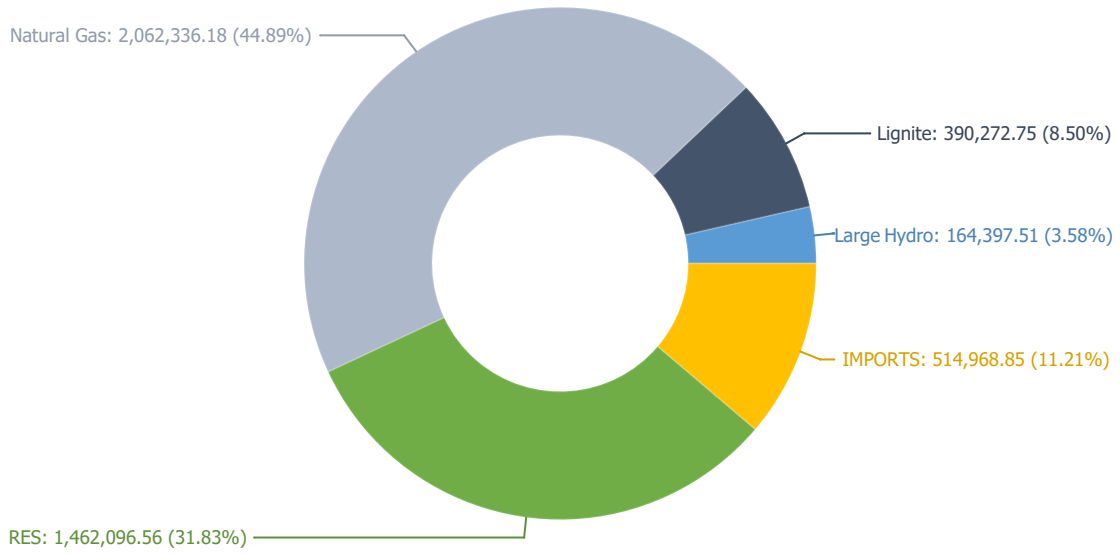
<b>Ref No</b>	Graph 1.3
<b>Title</b>	Energy Mix & MCP - BUY
<b>Scope</b>	Day Ahead Market (DAM)
<b>Analysis</b>	Daily



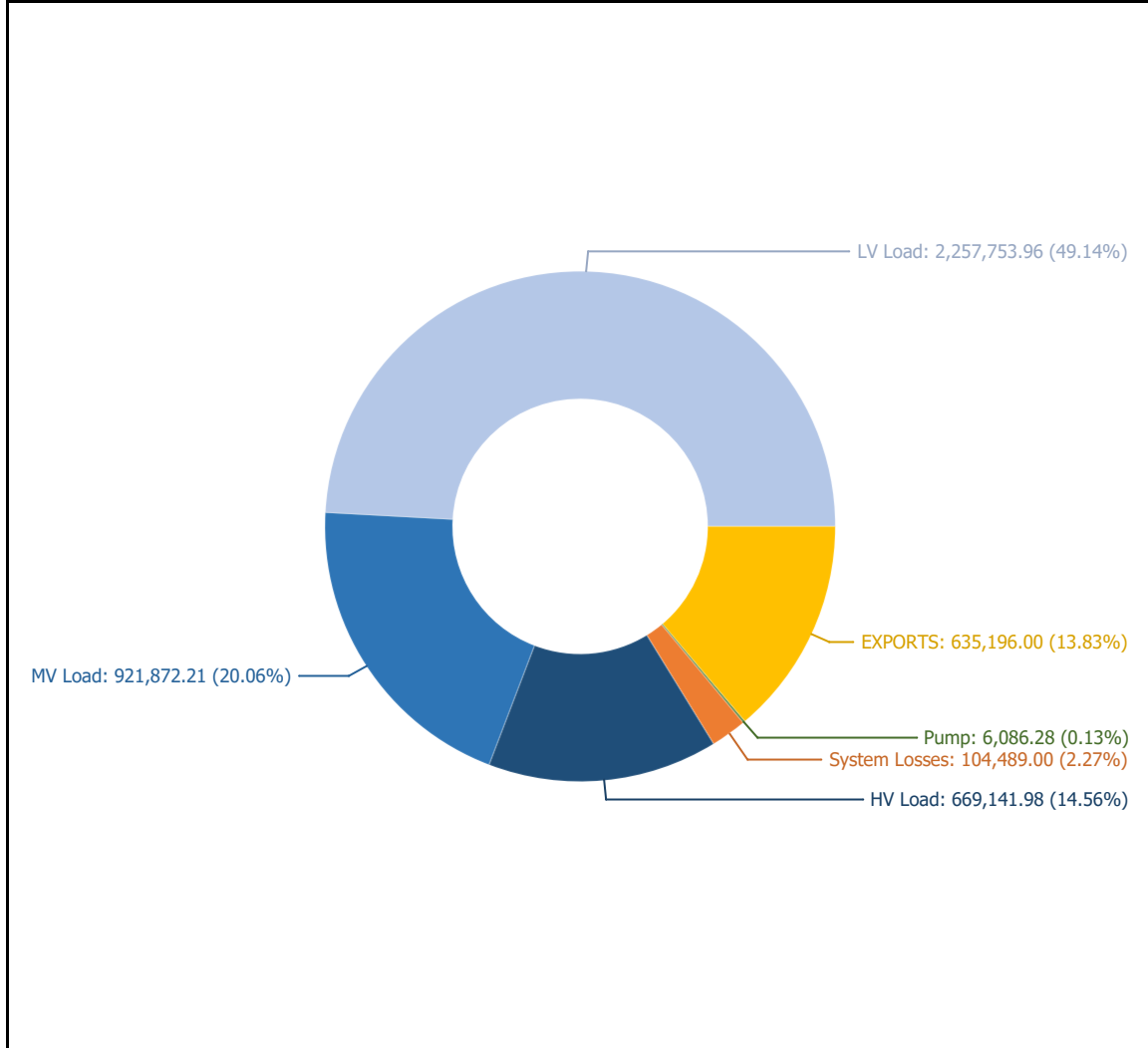
<b>Ref No</b>	Graph 1.4
<b>Title</b>	Energy Mix - BUY
<b>Scope</b>	Day Ahead Market (DAM)
<b>Analysis</b>	Daily



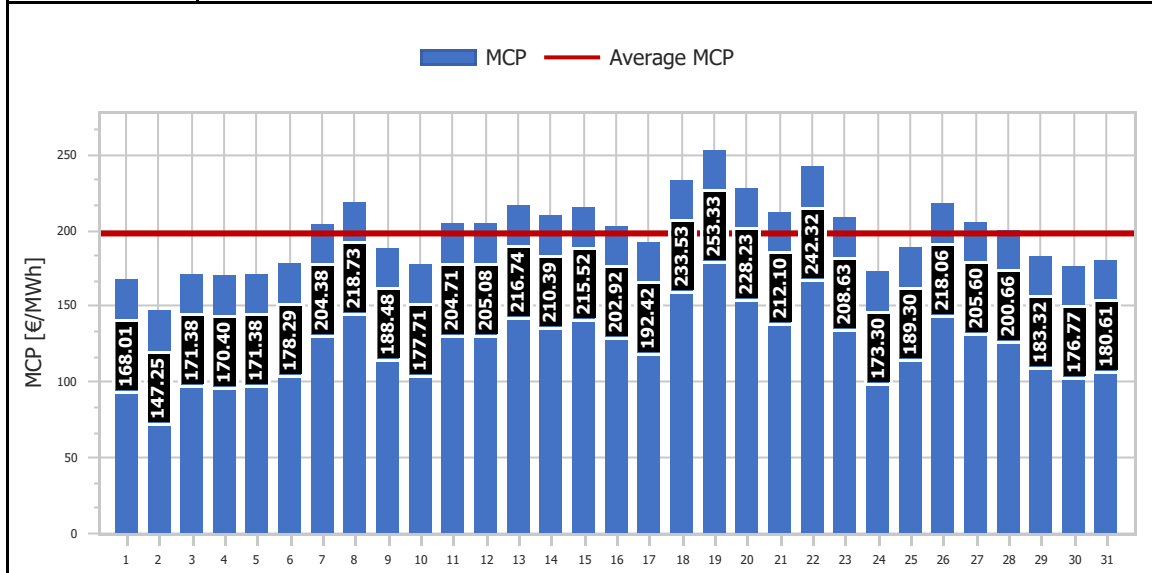
<b>Ref No</b>	Graph 1.5
<b>Title</b>	Energy Mix - SELL
<b>Scope</b>	Day Ahead Market (DAM)
<b>Analysis</b>	Daily



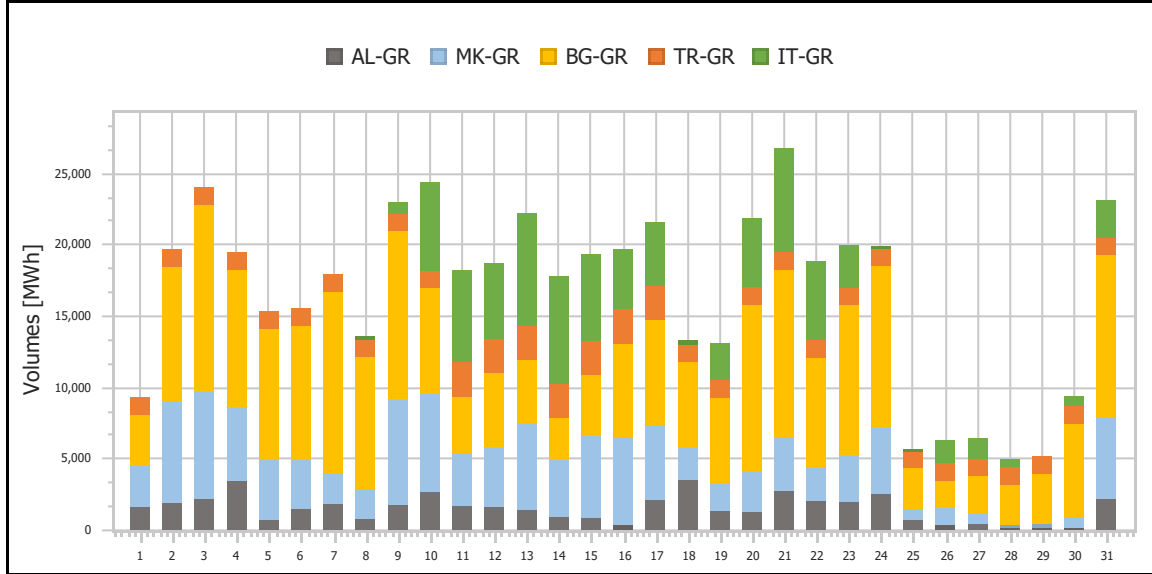
<b>Ref No</b>	Graph 1.6
<b>Title</b>	Energy Mix - BUY
<b>Scope</b>	Day Ahead Market (DAM)
<b>Analysis</b>	Daily



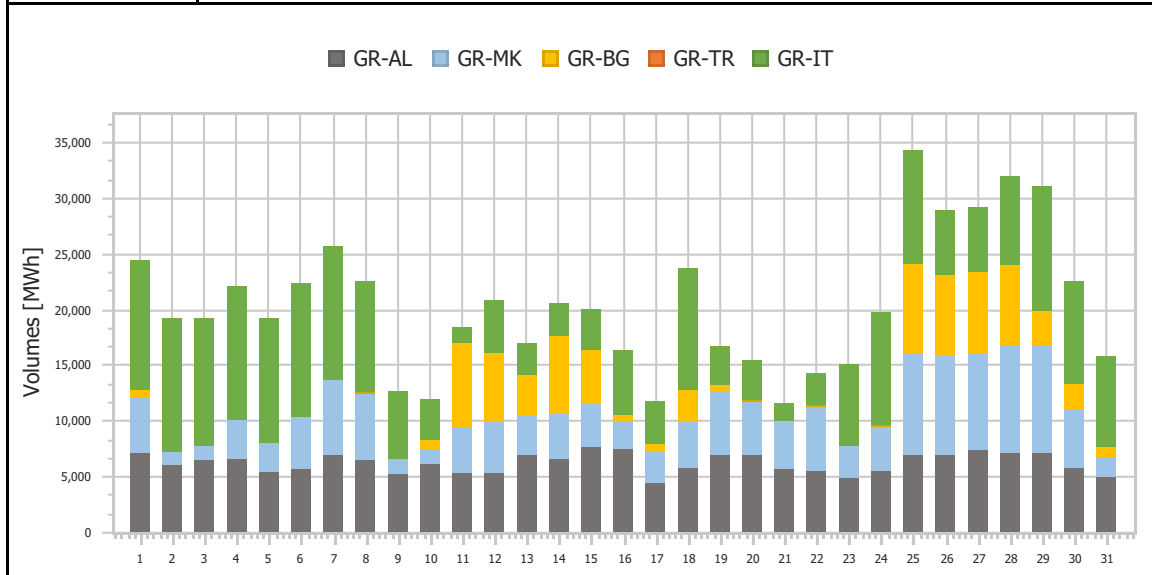
<b>Ref No</b>	Graph 1.7
<b>Title</b>	Market Clearing Price (MCP)
<b>Scope</b>	Day Ahead Market (DAM)
<b>Analysis</b>	Daily



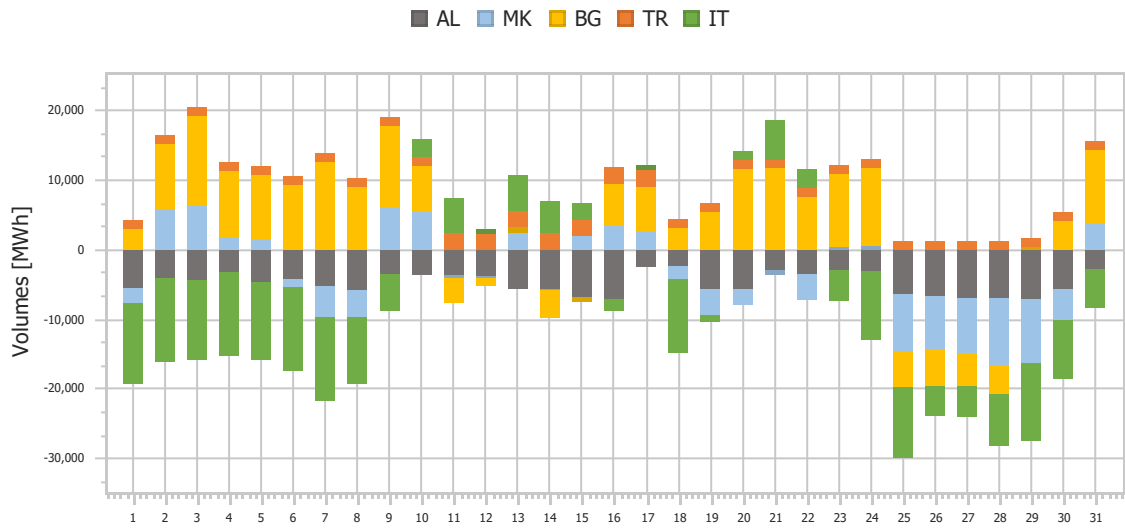
<b>Ref No</b>	Graph 1.8
<b>Title</b>	Imports per Border
<b>Scope</b>	Day Ahead Market (DAM)
<b>Analysis</b>	Daily



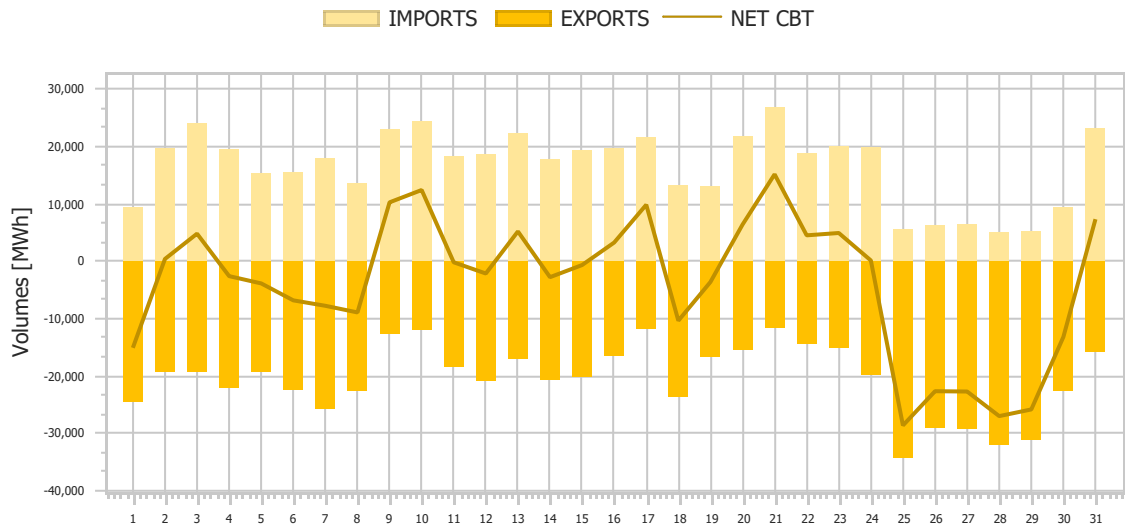
<b>Ref No</b>	Graph 1.9
<b>Title</b>	Exports per Border
<b>Scope</b>	Day Ahead Market (DAM)
<b>Analysis</b>	Daily



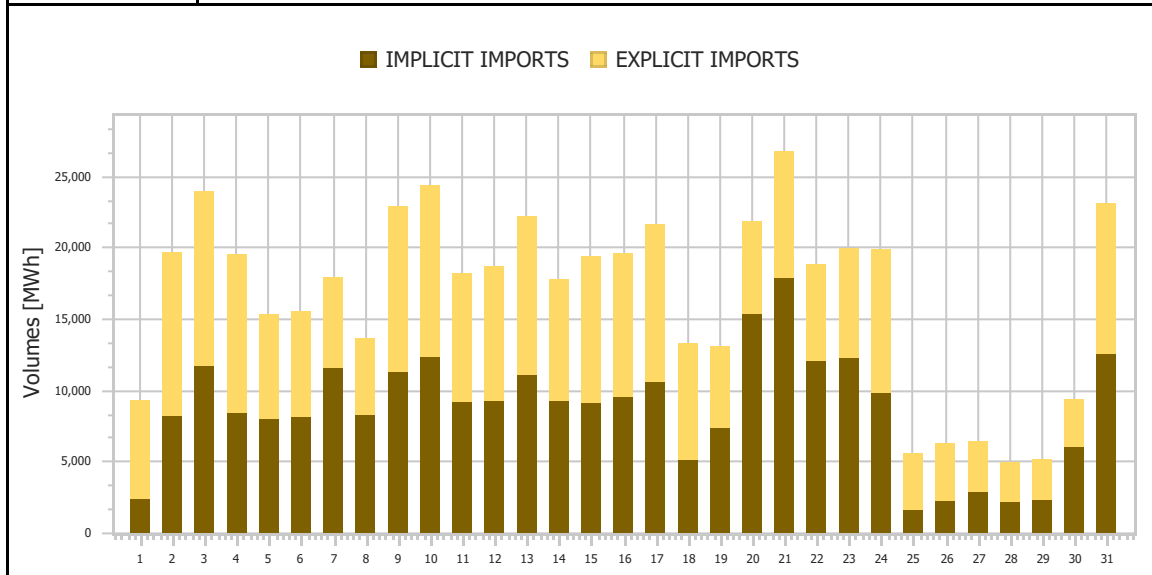
<b>Ref No</b>	Graph 1.10
<b>Title</b>	Net Imports per Border
<b>Scope</b>	Day Ahead Market (DAM)
<b>Analysis</b>	Daily



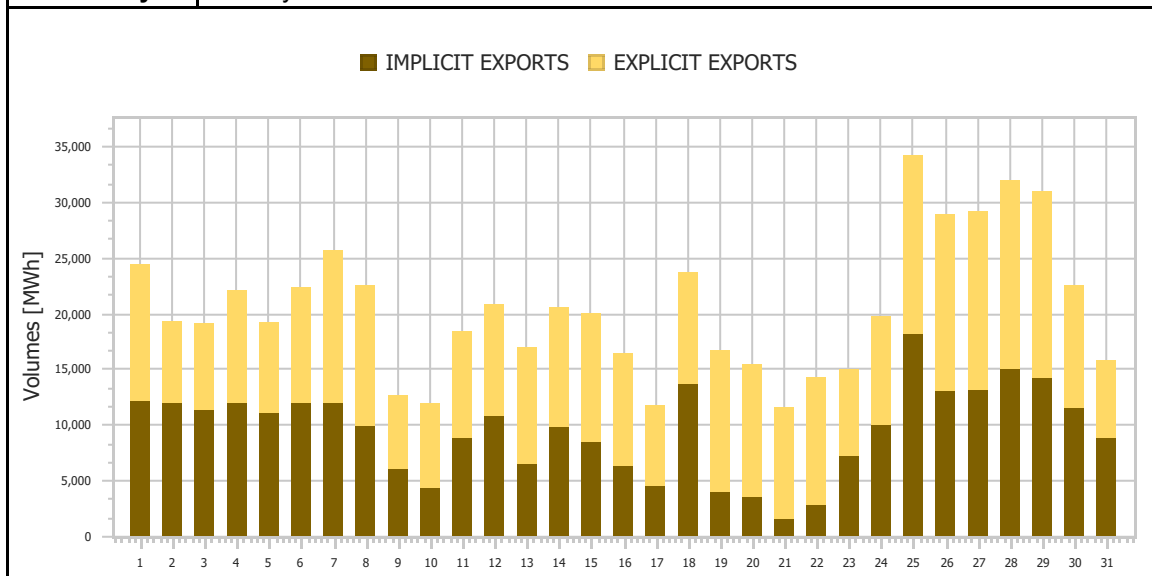
<b>Ref No</b>	Graph 1.11
<b>Title</b>	Total Imports & Exports
<b>Scope</b>	Day Ahead Market (DAM)
<b>Analysis</b>	Daily



<b>Ref No</b>	Graph 1.12
<b>Title</b>	Imports (Implicit/Explicit)
<b>Scope</b>	Day Ahead Market (DAM)
<b>Analysis</b>	Daily

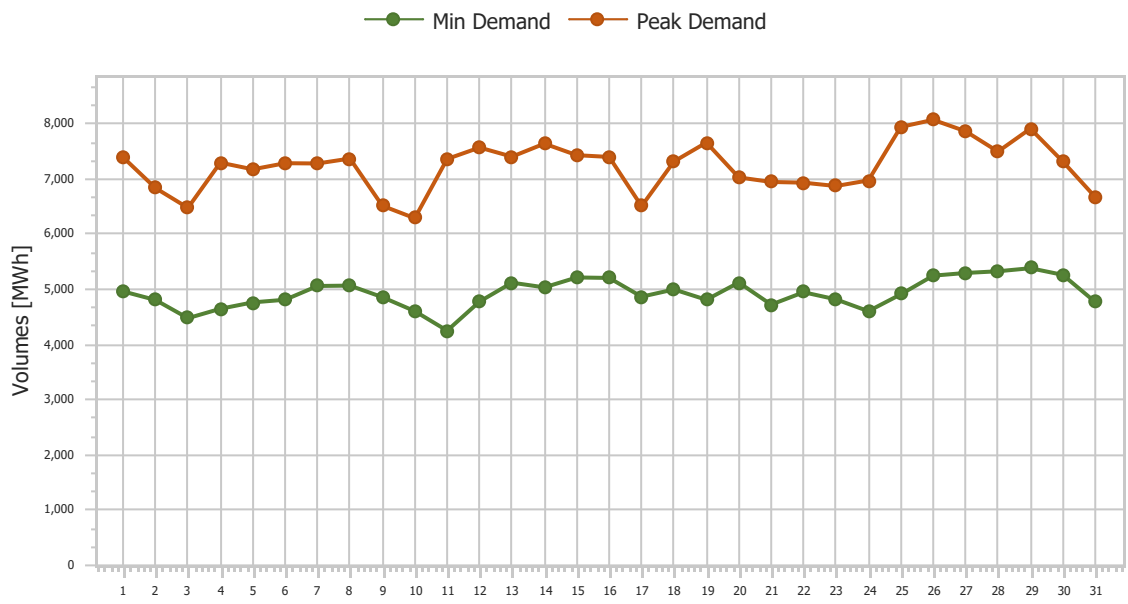


<b>Ref No</b>	Graph 1.13
<b>Title</b>	Exports (Implicit/Explicit)
<b>Scope</b>	Day Ahead Market (DAM)
<b>Analysis</b>	Monthly

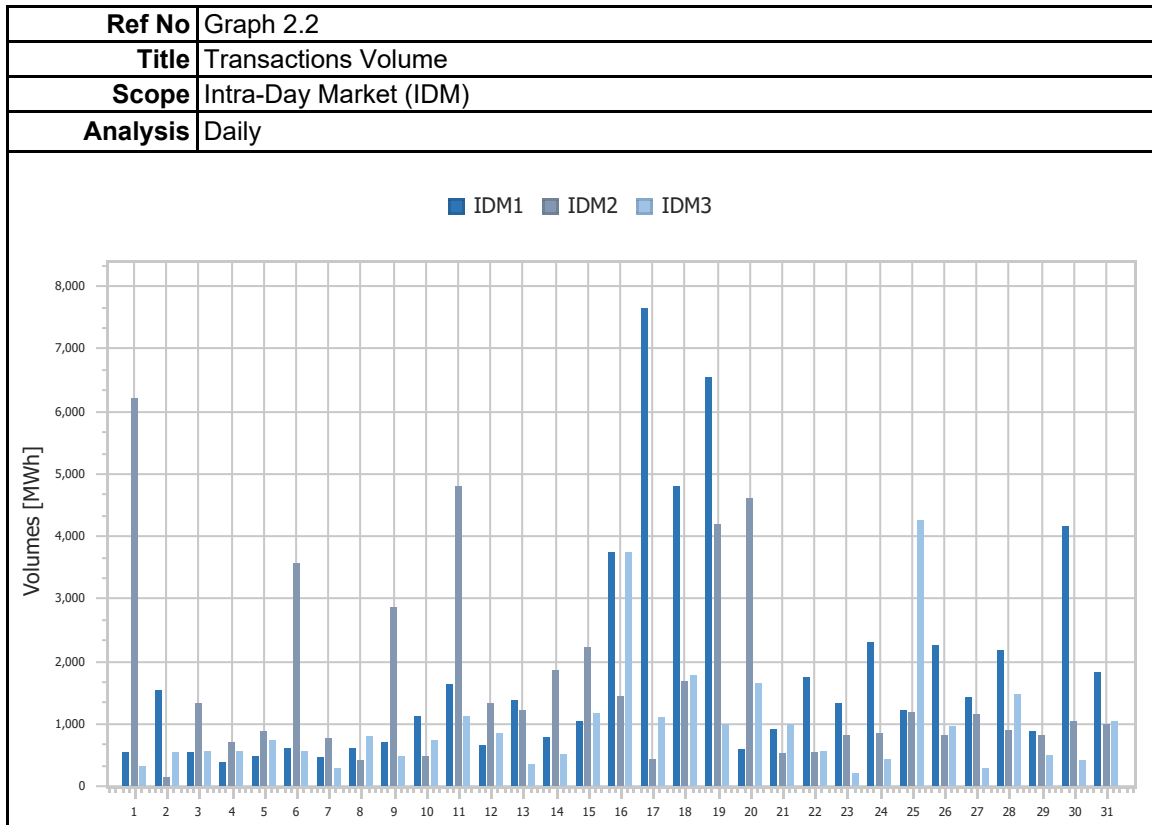
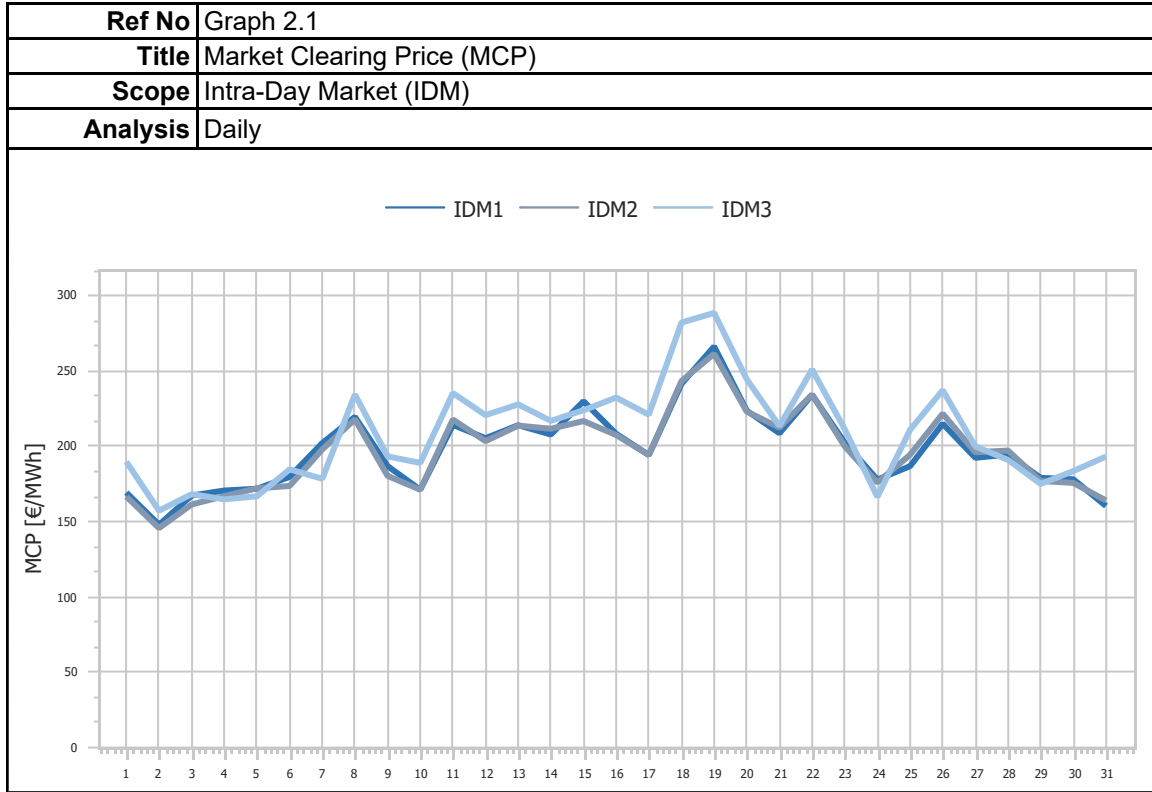


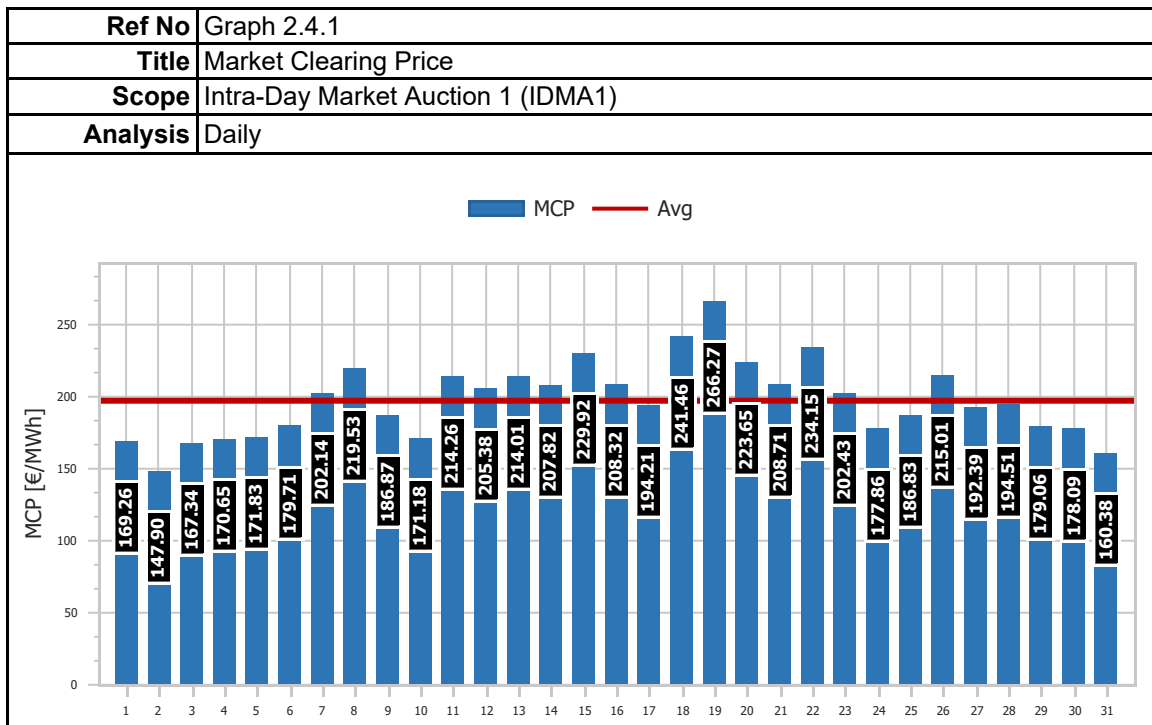
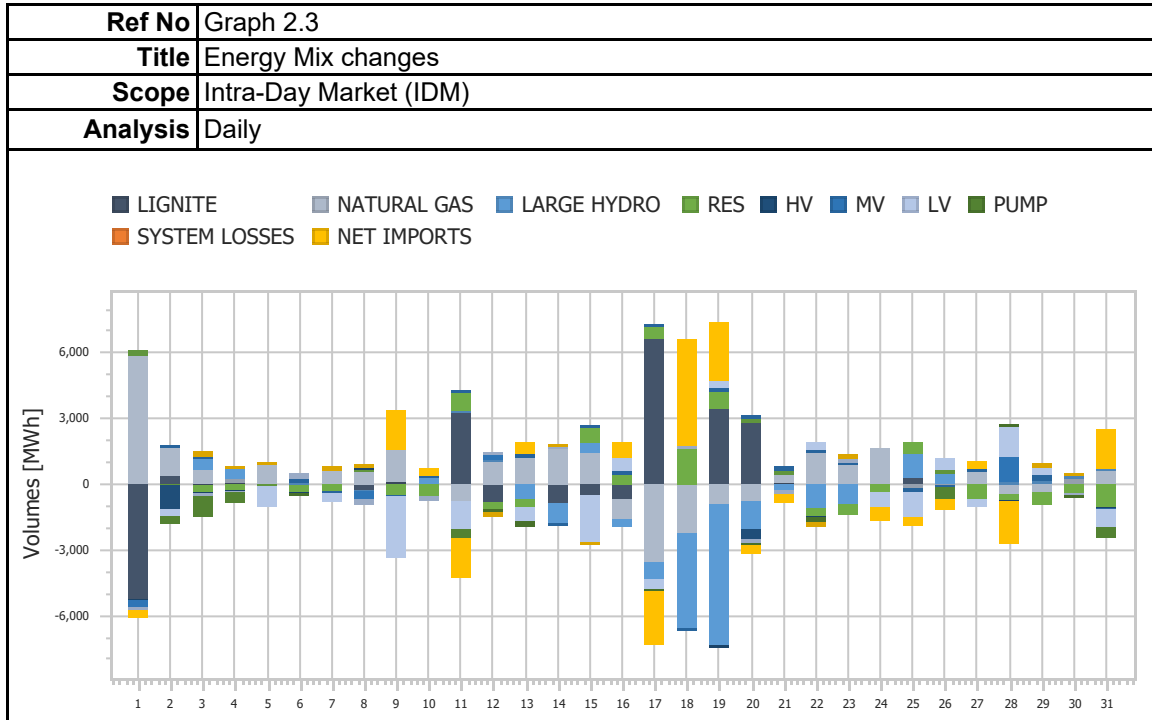


<b>Ref No</b>	Graph 1.14
<b>Title</b>	Min & Peak Demand
<b>Scope</b>	Day Ahead Market (DAM)
<b>Analysis</b>	Daily

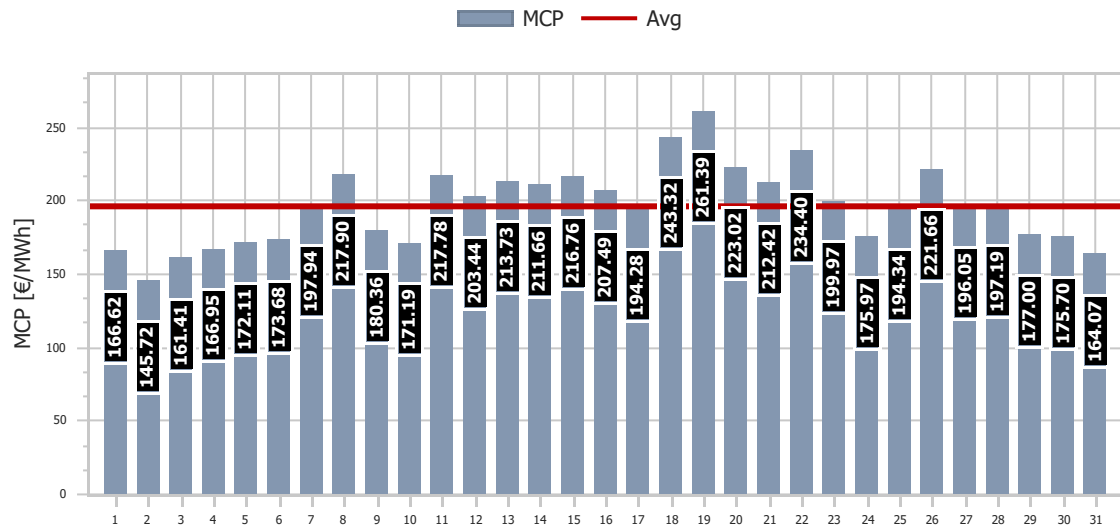


## 2. Intra-Day Market (IDM)

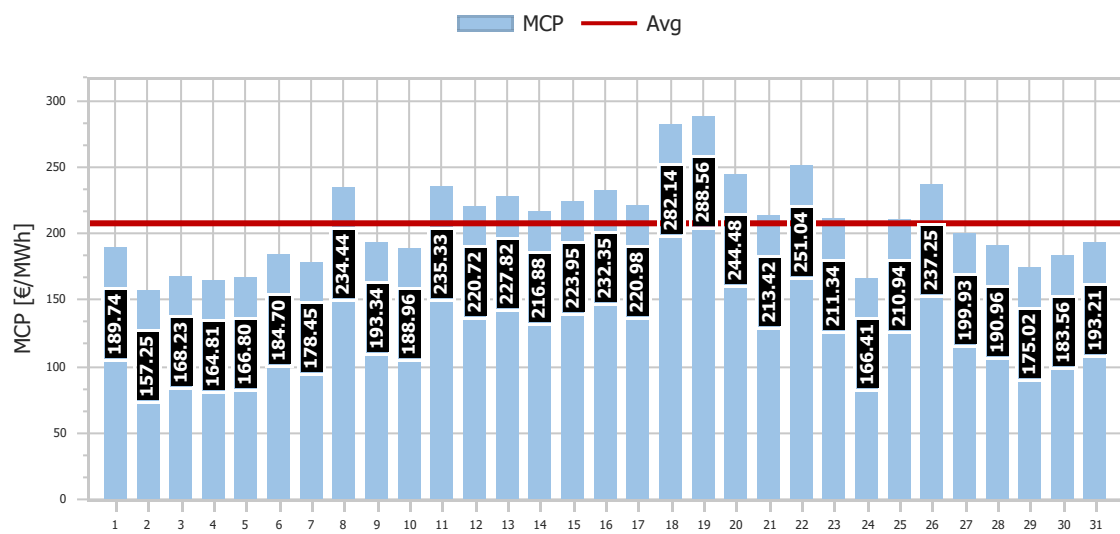


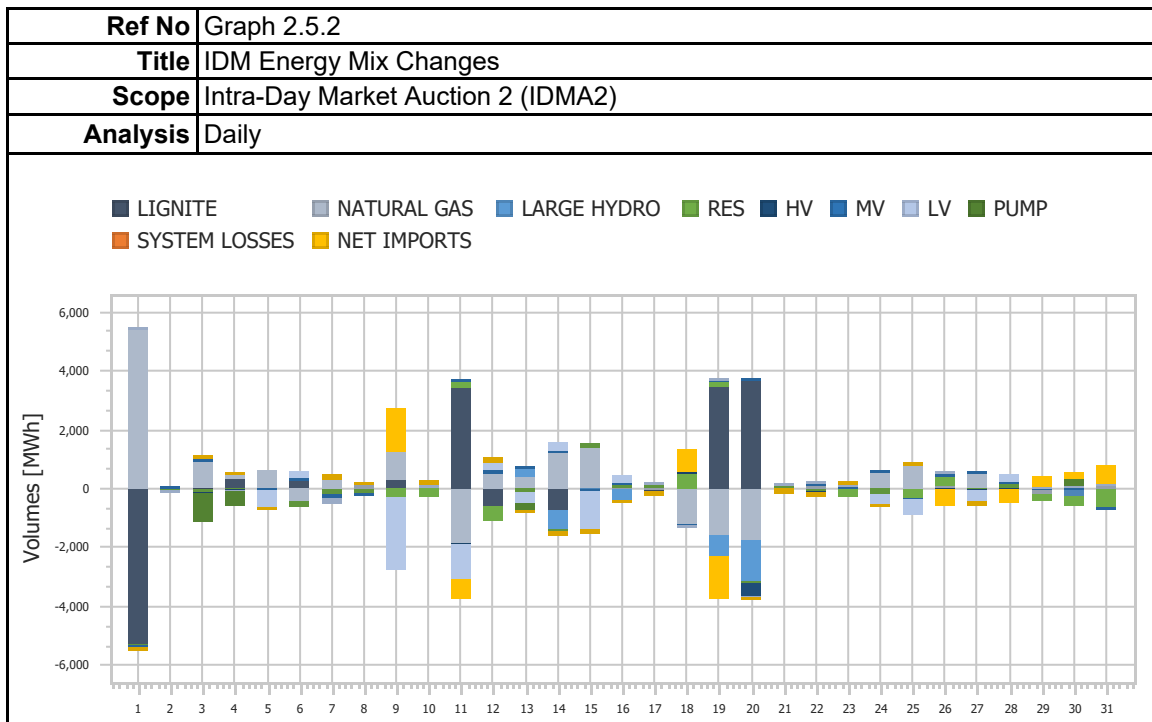
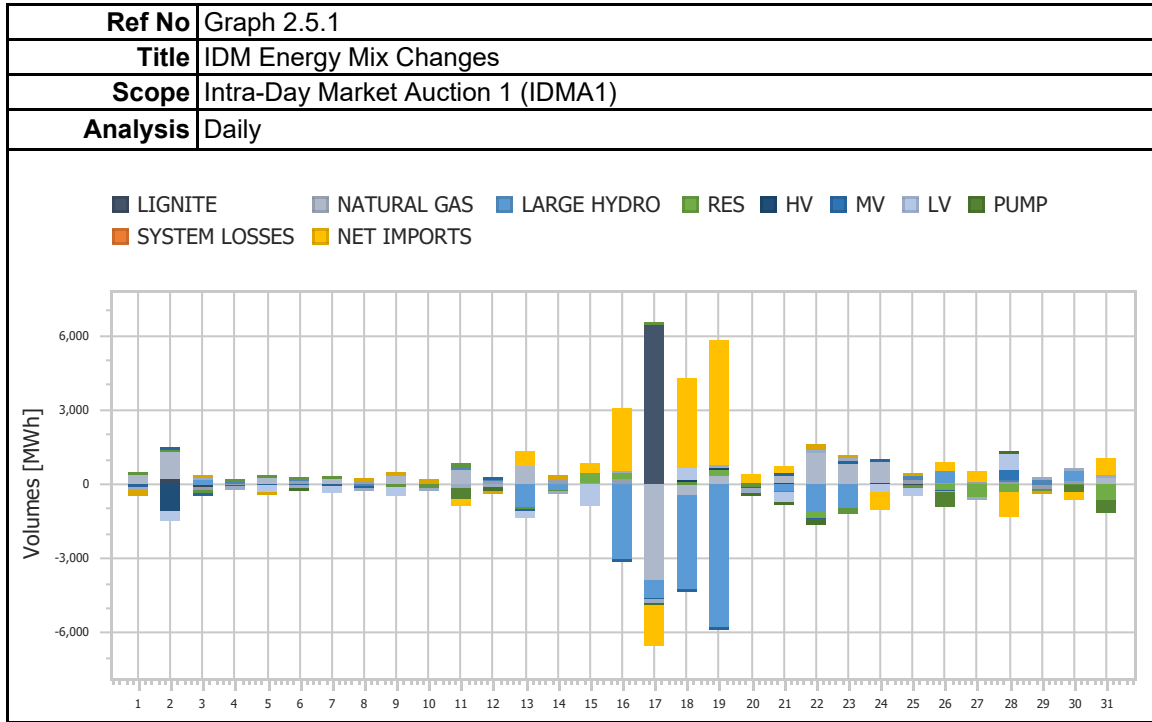


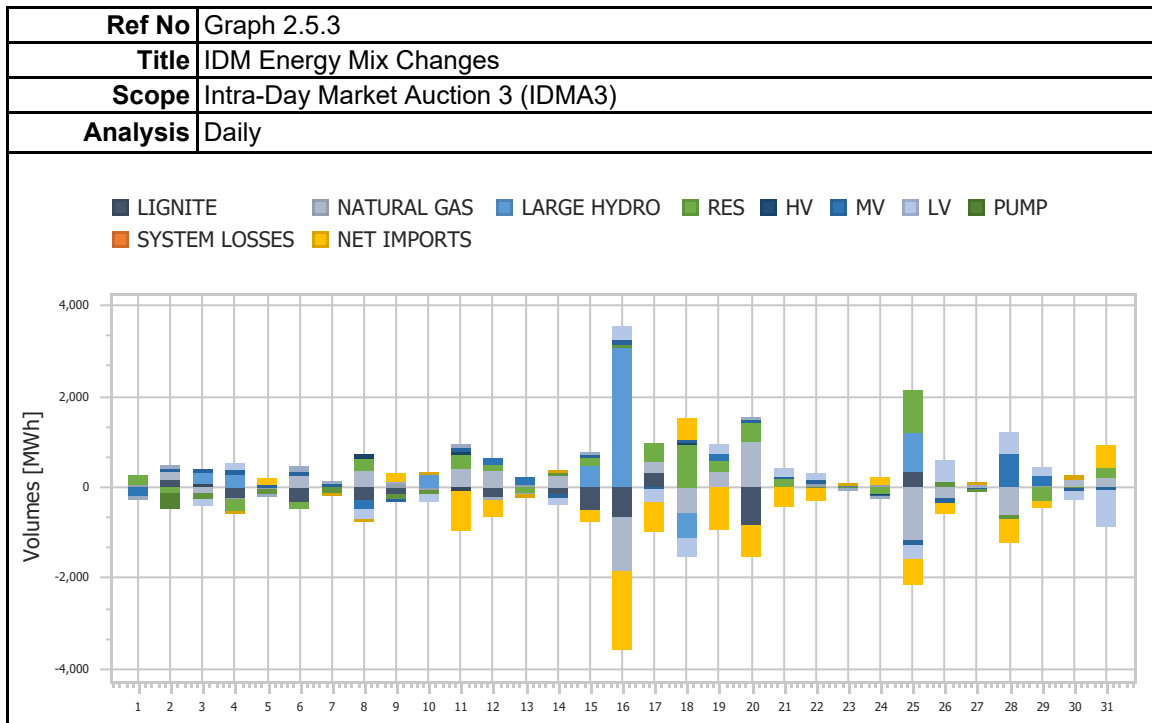
<b>Ref No</b>	Graph 2.4.2
<b>Title</b>	Market Clearing Price
<b>Scope</b>	Intra-Day Market Auction 2 (IDMA2)
<b>Analysis</b>	Daily



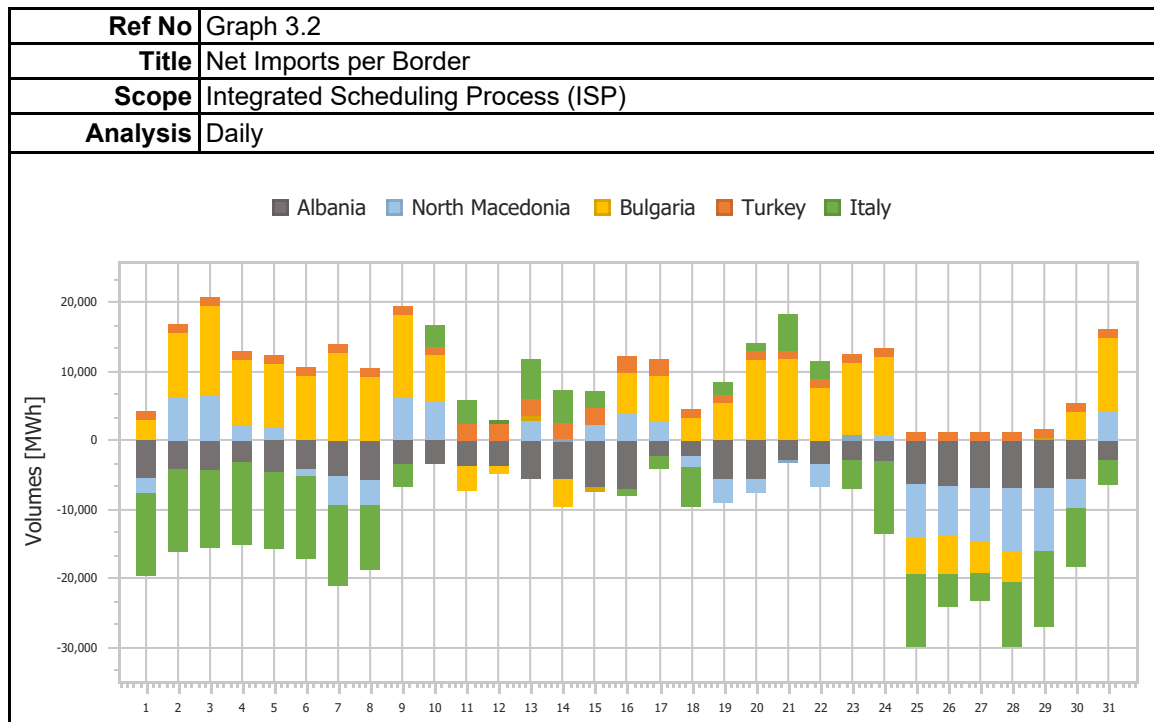
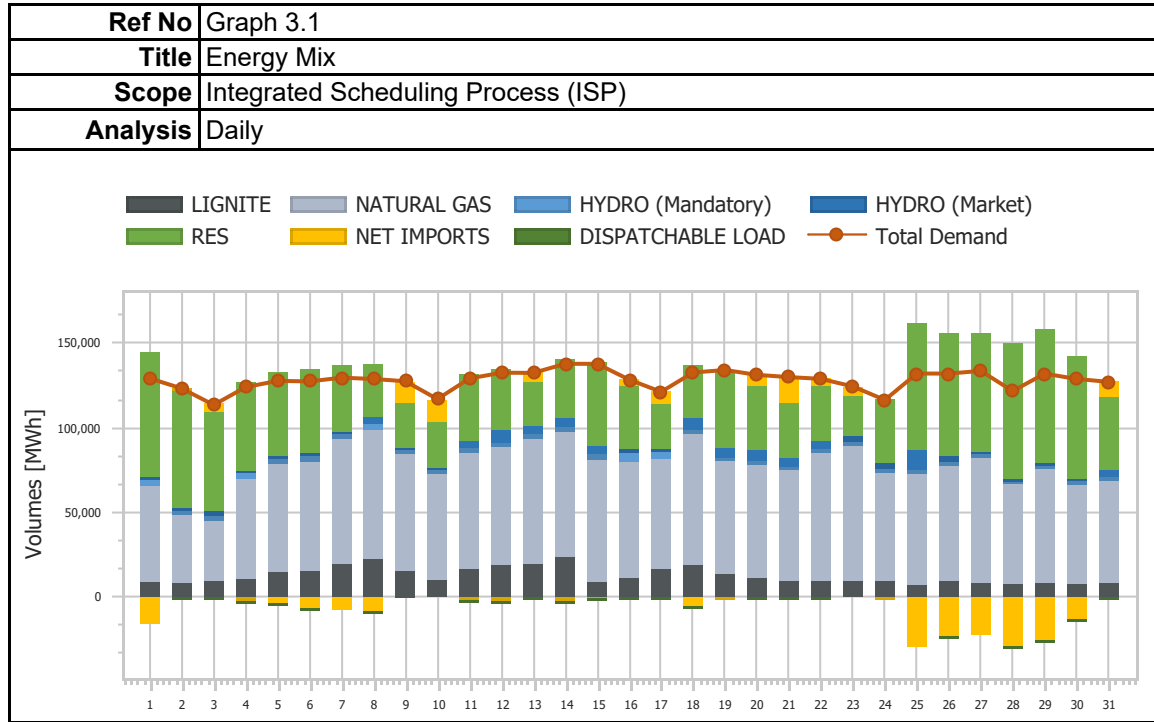
<b>Ref No</b>	Graph 2.4.3
<b>Title</b>	Market Clearing Price
<b>Scope</b>	Intra-Day Market Auction 3 (IDMA3)
<b>Analysis</b>	Daily



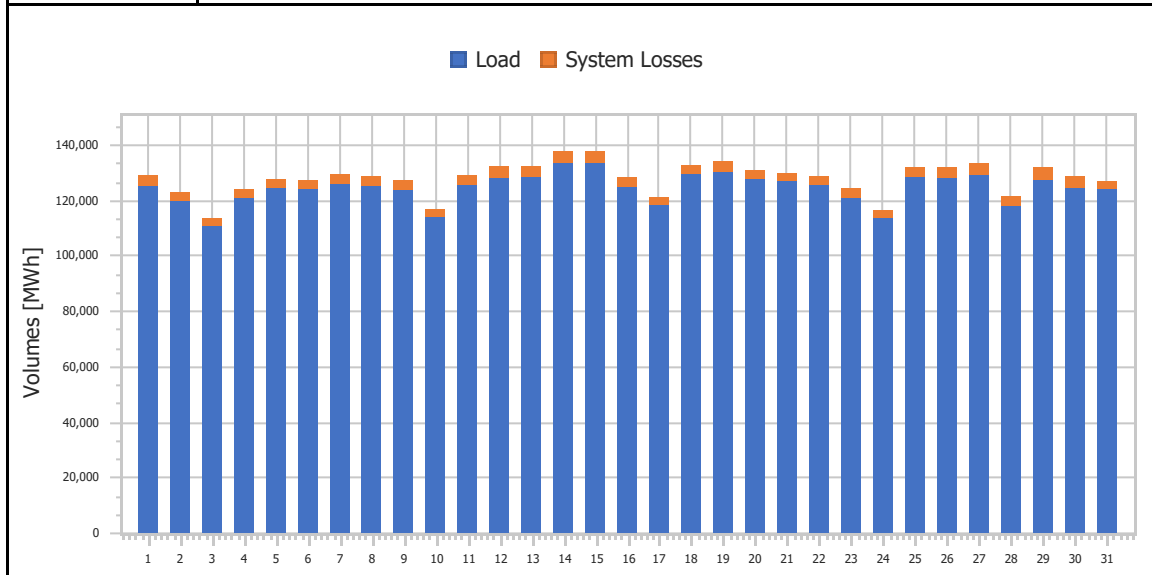




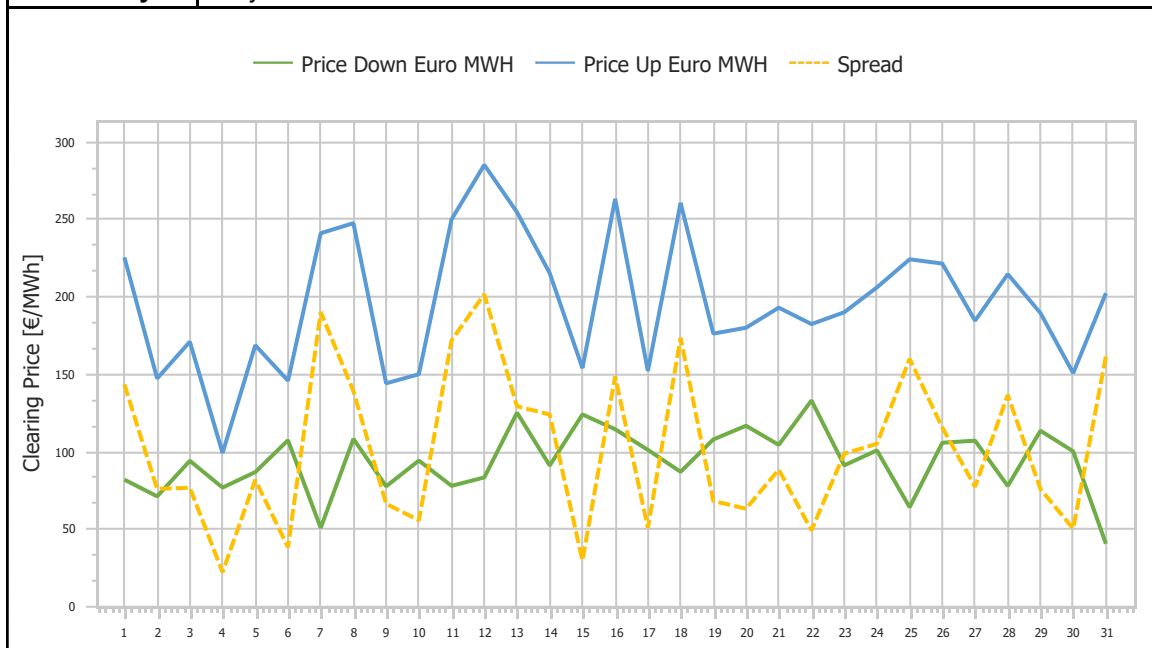
### 3. Integrated Scheduling Process (ISP)



<b>Ref No</b>	Graph 3.3
<b>Title</b>	Demand & System Losses
<b>Scope</b>	Integrated Scheduling Process (ISP)
<b>Analysis</b>	Daily

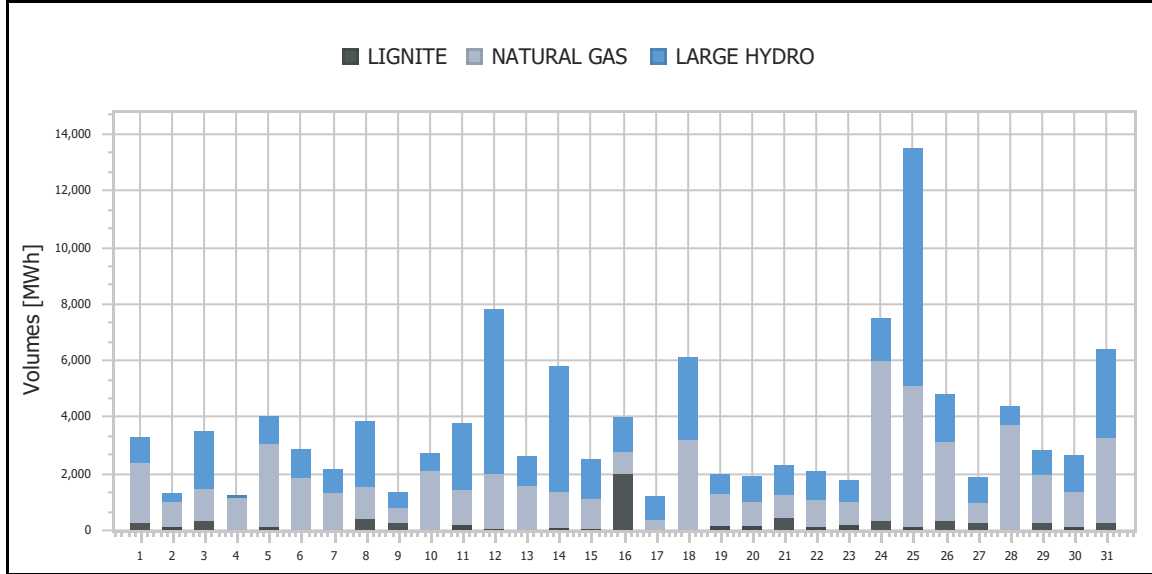


<b>Ref No</b>	Graph 3.4
<b>Title</b>	Clearing Prices
<b>Scope</b>	Integrated Scheduling Process (ISP)
<b>Analysis</b>	Daily

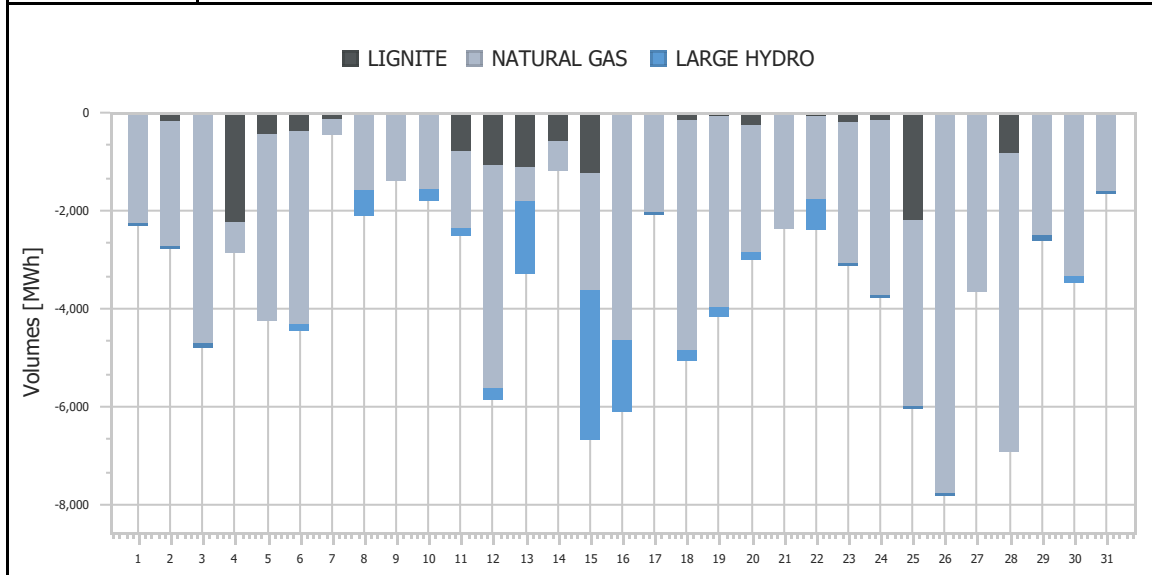




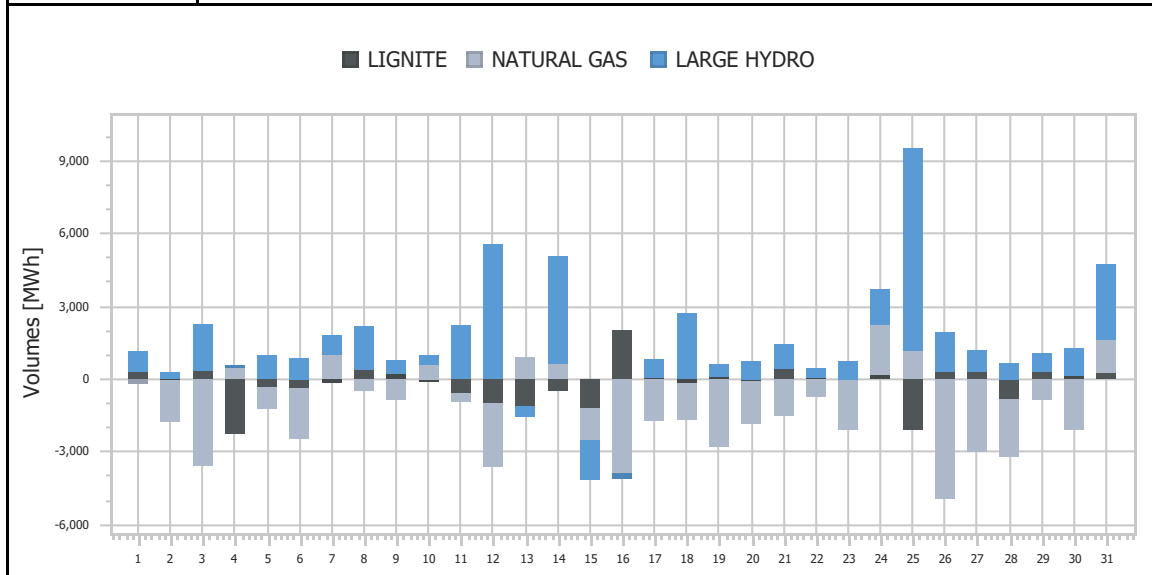
<b>Ref No</b>	Graph 3.5
<b>Title</b>	Upward Activated Balancing energy
<b>Scope</b>	Integrated Scheduling Process (ISP)
<b>Analysis</b>	Daily



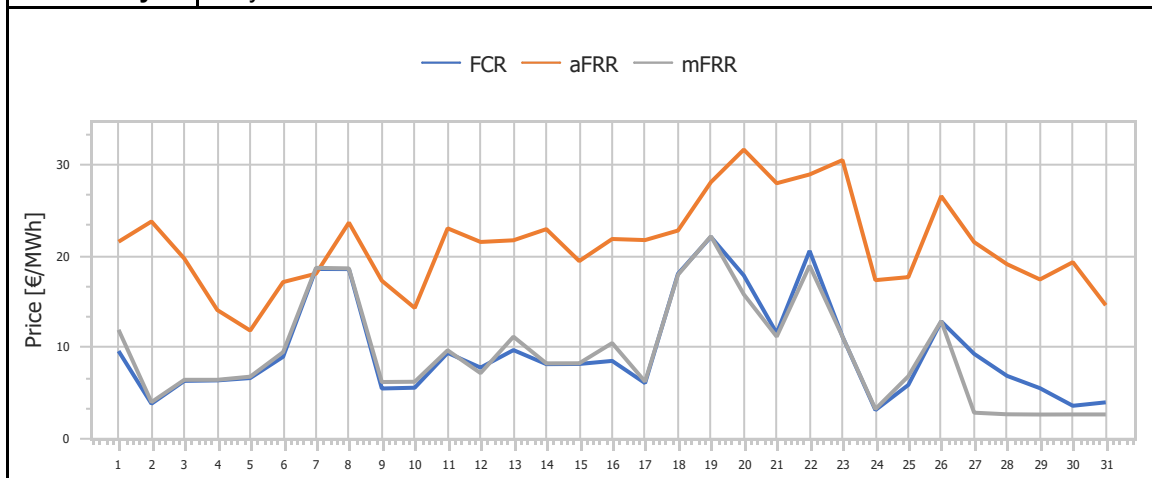
<b>Ref No</b>	Graph 3.6
<b>Title</b>	Downward Activated Balancing energy
<b>Scope</b>	Integrated Scheduling Process (ISP)
<b>Analysis</b>	Daily



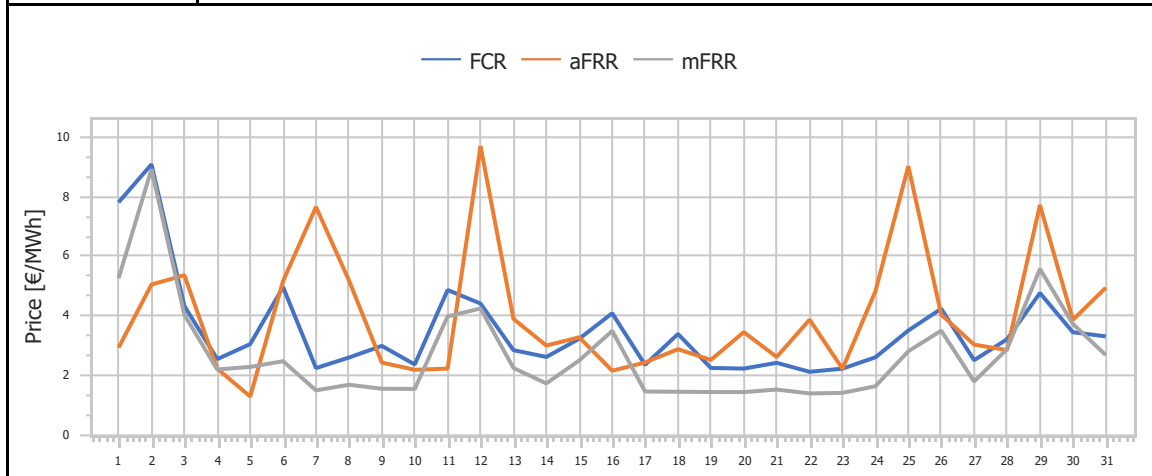
<b>Ref No</b>	Graph 3.7
<b>Title</b>	Net Activated Balancing energy
<b>Scope</b>	Integrated Scheduling Process (ISP)
<b>Analysis</b>	Daily



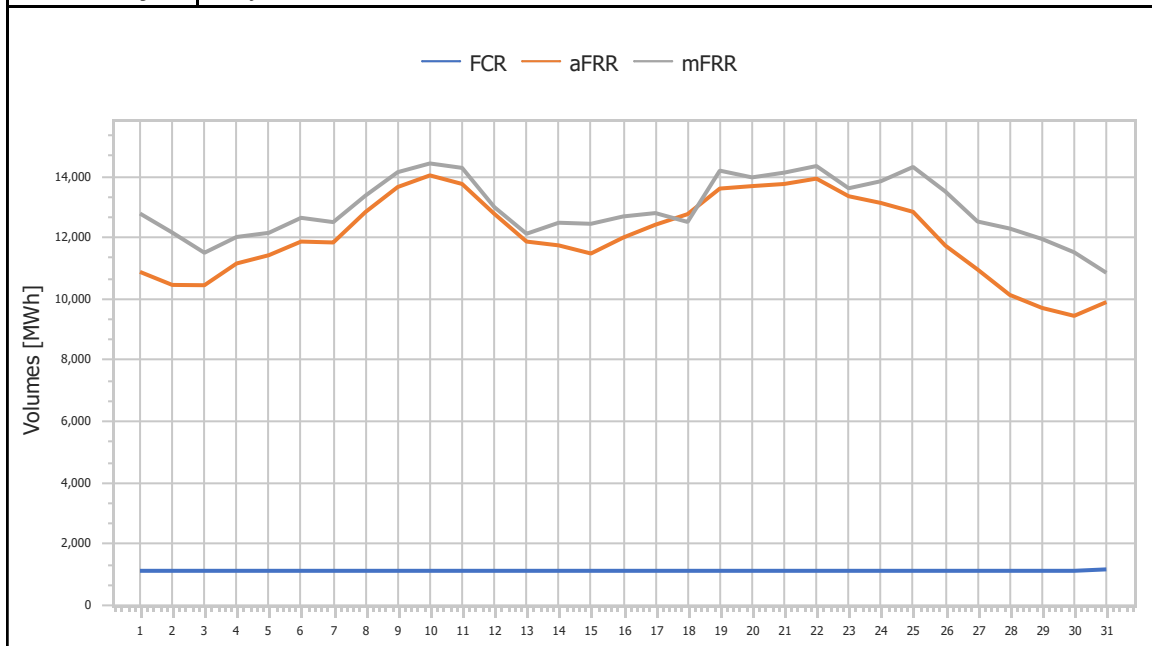
<b>Ref No</b>	Graph 3.8
<b>Title</b>	Upward Capacity Reserves Prices
<b>Scope</b>	Integrated Scheduling Process (ISP)
<b>Analysis</b>	Daily



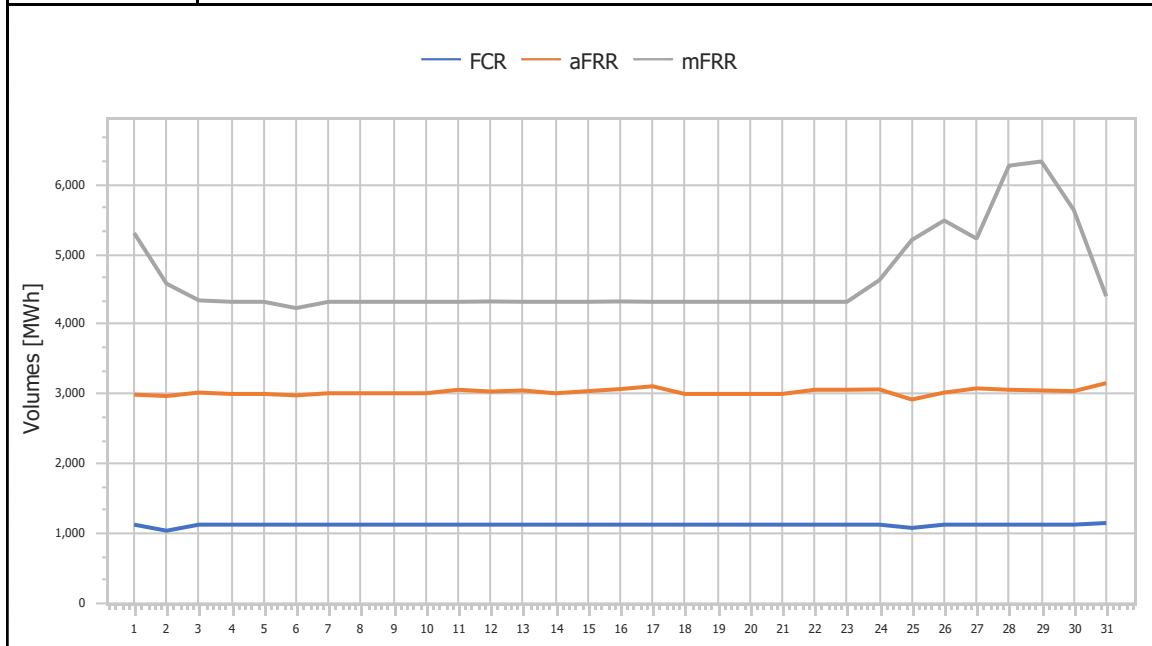
<b>Ref No</b>	Graph 3.9
<b>Title</b>	Downward Capacity Reserves Prices
<b>Scope</b>	Integrated Scheduling Process (ISP)
<b>Analysis</b>	Daily



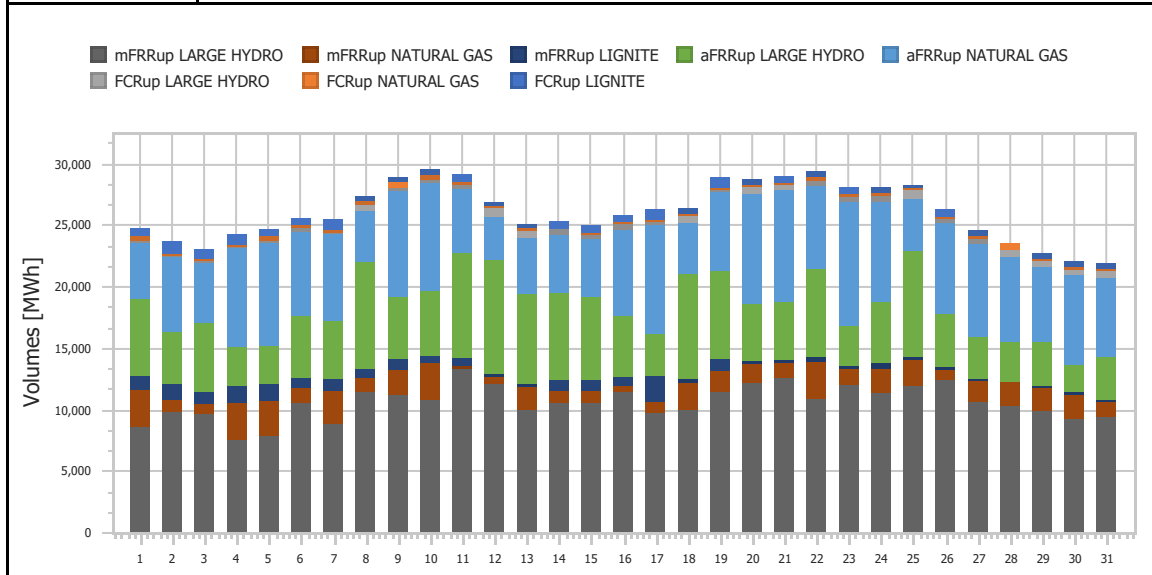
<b>Ref No</b>	Graph 3.10
<b>Title</b>	Upward Capacity Reserves Volumes
<b>Scope</b>	Integrated Scheduling Process (ISP)
<b>Analysis</b>	Daily

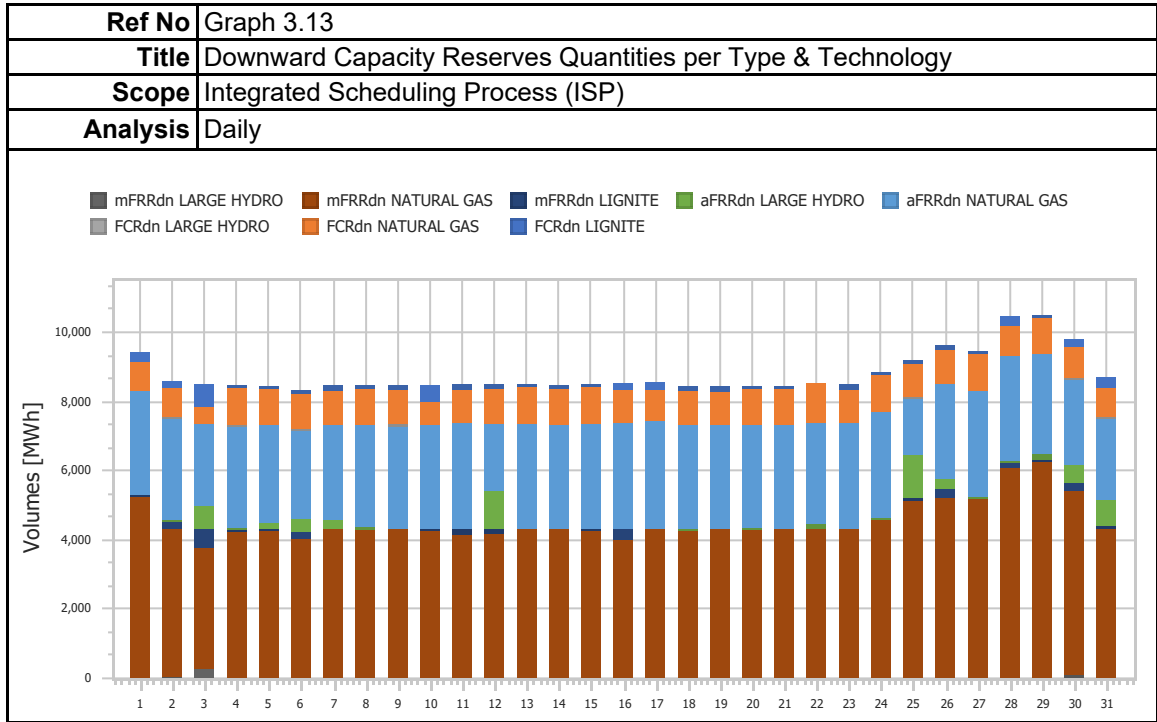


<b>Ref No</b>	Graph 3.11
<b>Title</b>	Downward Capacity Reserves Volumes
<b>Scope</b>	Integrated Scheduling Process (ISP)
<b>Analysis</b>	Daily

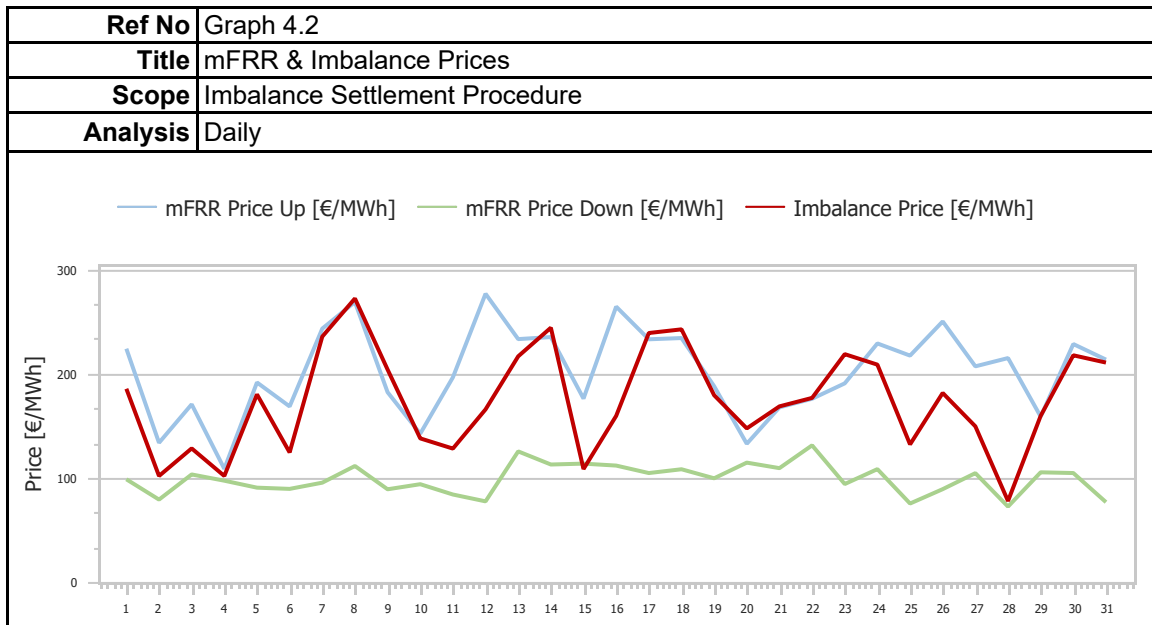
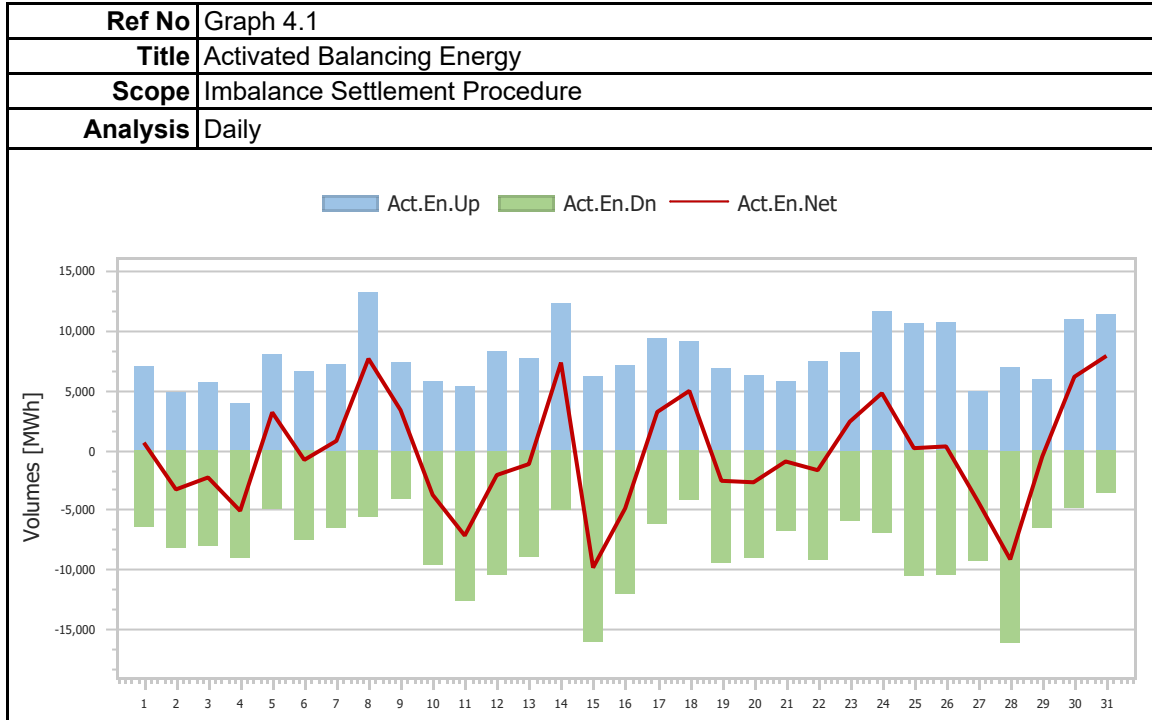


<b>Ref No</b>	Graph 3.12
<b>Title</b>	Upward Capacity Reserves Volumes per Technology
<b>Scope</b>	Integrated Scheduling Process (ISP)
<b>Analysis</b>	Daily

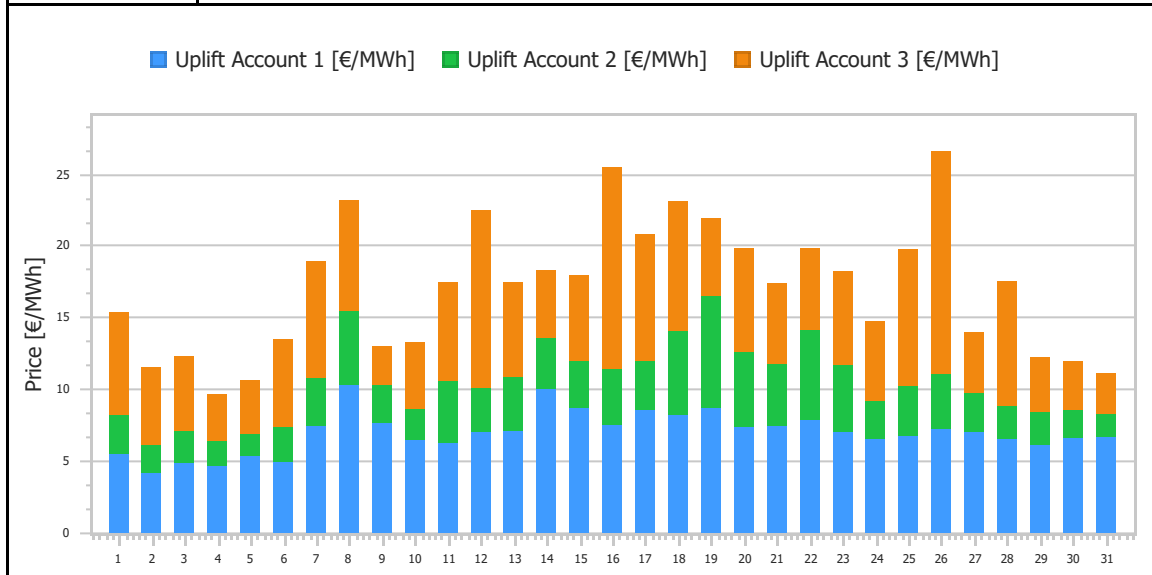




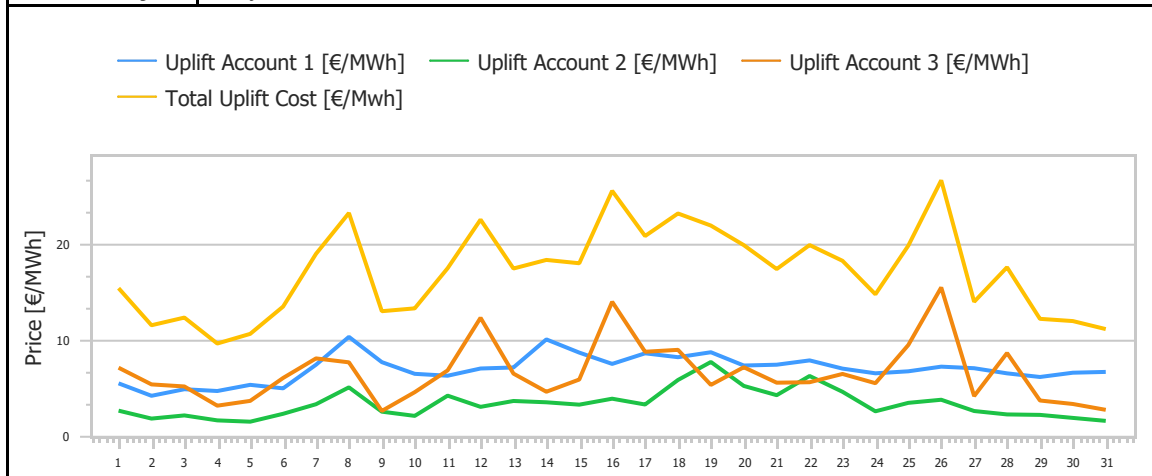
### 4. Imbalance Settlement Procedure



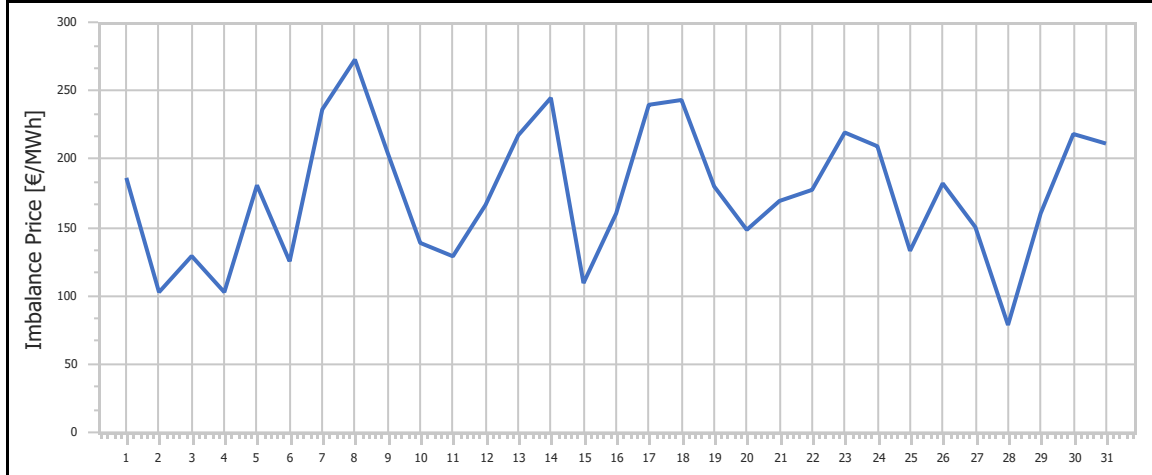
<b>Ref No</b>	Graph 4.3
<b>Title</b>	Uplift Accounts Cost
<b>Scope</b>	Imbalance Settlement Procedure
<b>Analysis</b>	Daily



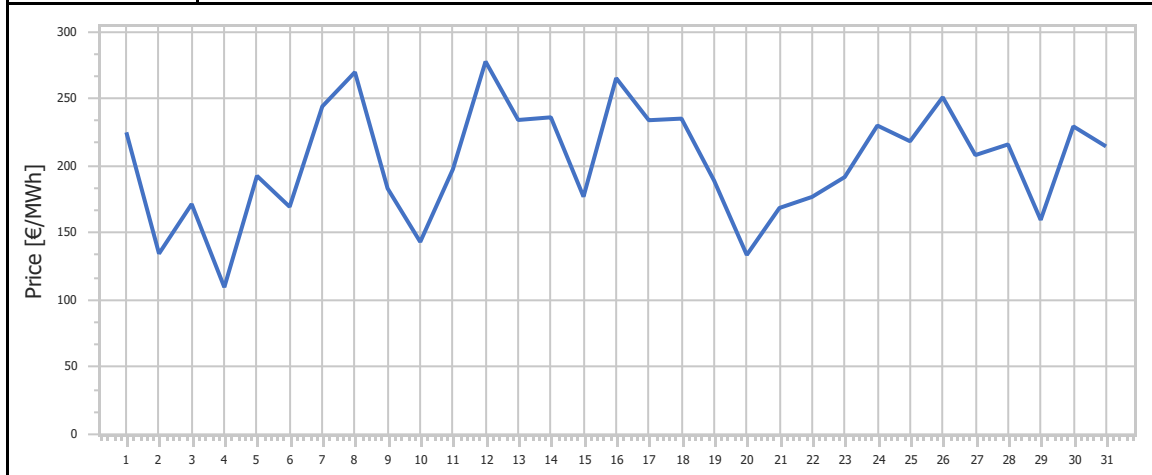
<b>Ref No</b>	Graph 4.4
<b>Title</b>	Uplift Accounts Cost
<b>Scope</b>	Imbalance Settlement Procedure
<b>Analysis</b>	Daily



<b>Ref No</b>	Graph 4.5
<b>Title</b>	Imbalance Price
<b>Scope</b>	Imbalance Settlement Procedure
<b>Analysis</b>	Daily

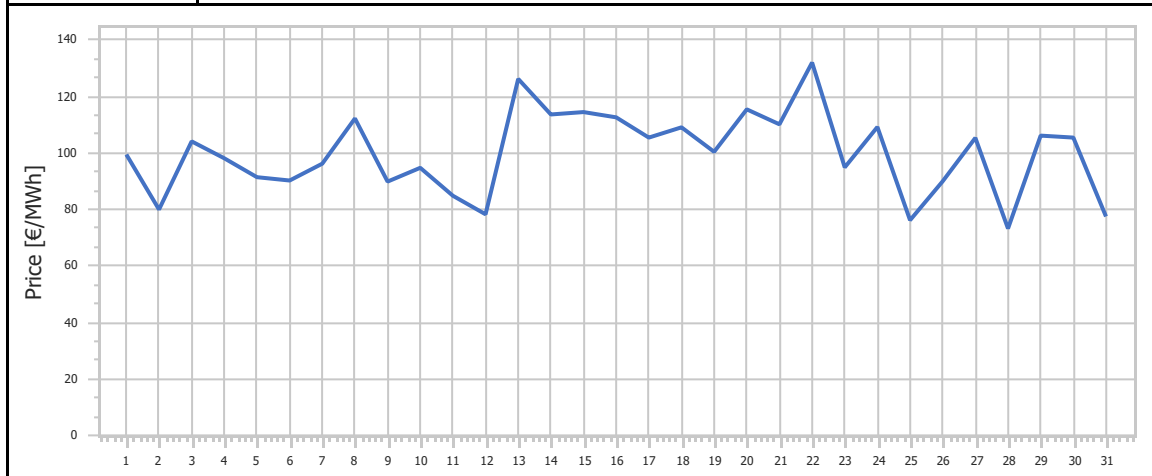


<b>Ref No</b>	Graph 4.6
<b>Title</b>	mFRR Up Price
<b>Scope</b>	Imbalance Settlement Procedure
<b>Analysis</b>	Daily

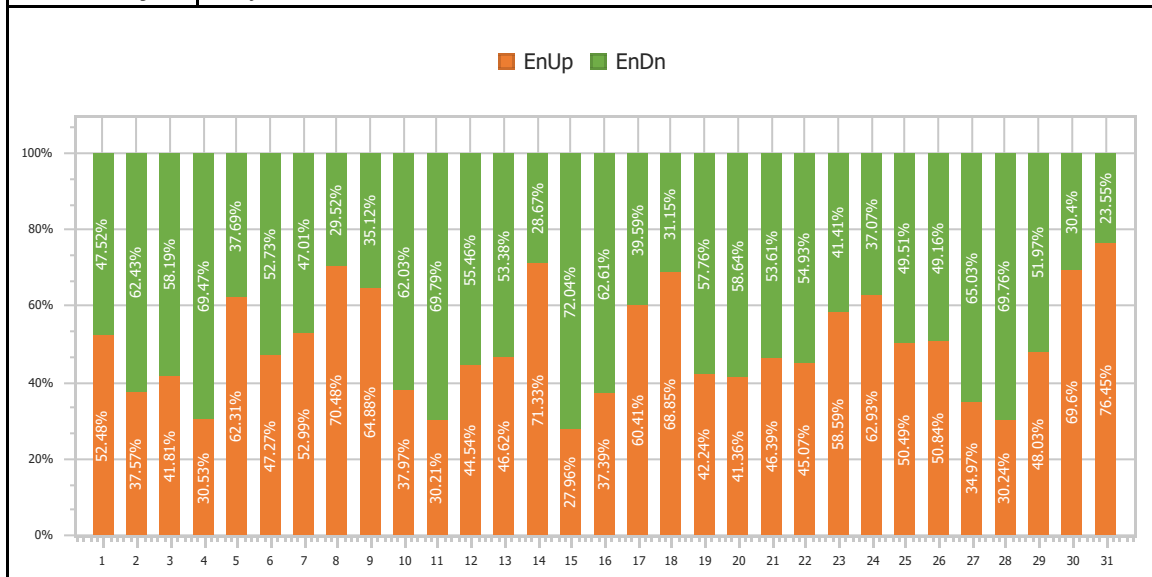




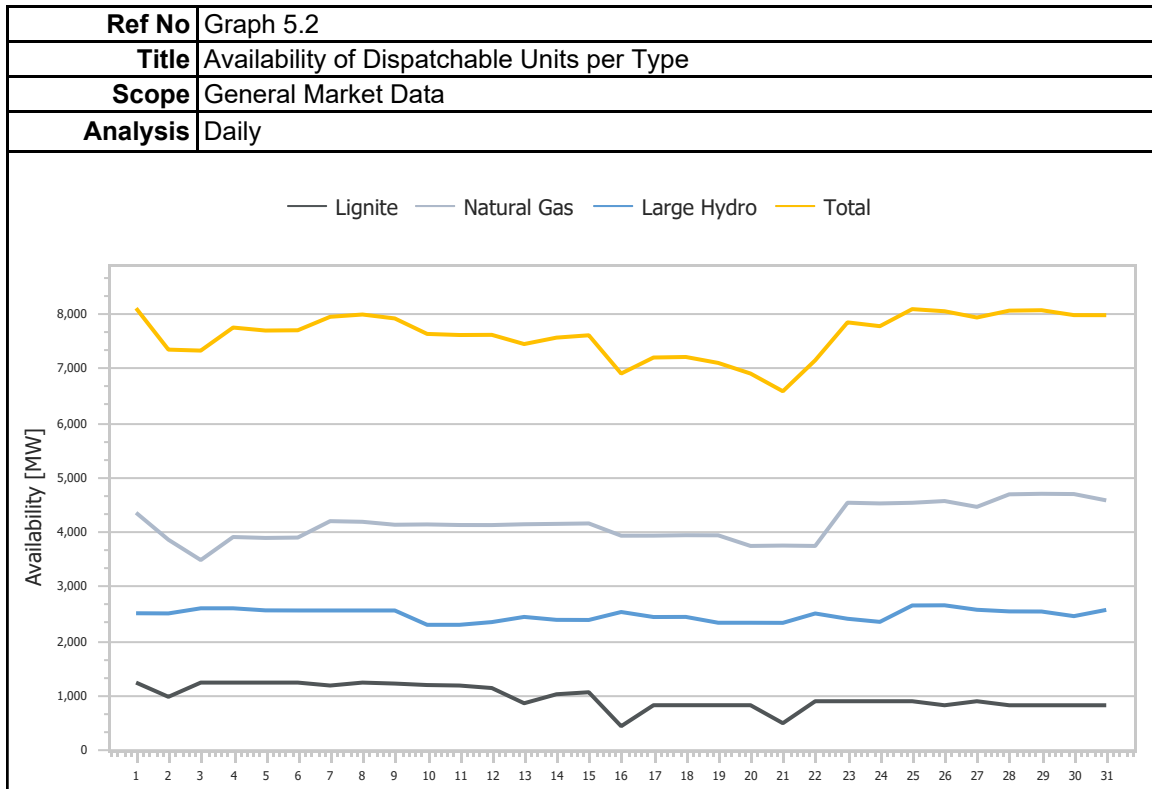
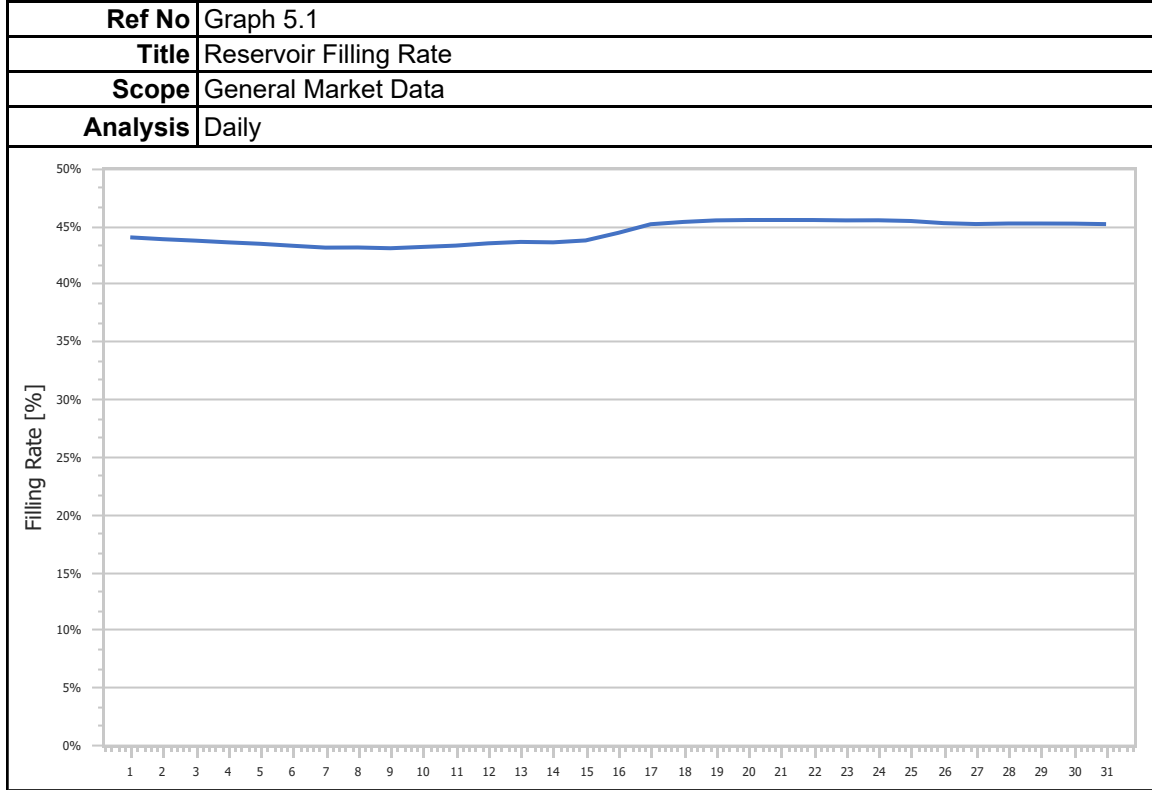
<b>Ref No</b>	Graph 4.7
<b>Title</b>	mFRR Down Price
<b>Scope</b>	Imbalance Settlement Procedure
<b>Analysis</b>	Daily



<b>Ref No</b>	Graph 4.8
<b>Title</b>	Balancing Energy Activation Direction
<b>Scope</b>	Imbalance Settlement Procedure
<b>Analysis</b>	Daily



### 5. General Market Data



## 1. Statistics

<b>Ref No</b>	Table 1.1			
<b>Title</b>	Market Shares per Aggregated Classification - SELL			
<b>Scope</b>	Day Ahead Market (DAM)			
<b>Analysis</b>	Monthly			
Classification	Quantity [MWh]	Share [%]	Value [EUR]	Share [%]
Lignite	390,272.748	8.50%	78,631,649.12€	8.47%
Crete Conventional	-	0.00%	- €	0.00%
Natural Gas	2,062,336.184	44.89%	428,734,611.38€	46.16%
Large Hydro	164,397.506	3.58%	40,332,400.29€	4.34%
RES	1,462,096.562	31.83%	281,831,573.65€	30.35%
Crete Renewables	-	0.00%	- €	0.00%
Imports	514,968.850	11.21%	99,184,226.75€	10.68%
<b>Total</b>	<b>4,594,071.849</b>	<b>100.00%</b>	<b>928,714,461.19€</b>	<b>100.00%</b>

<b>Ref No</b>	Table 1.2						
<b>Title</b>	Statistics per Aggregated Classification - SELL						
<b>Scope</b>	Day Ahead Market (DAM)						
<b>Analysis</b>	Monthly						
	MCP [€/MWh]	Total [MWh]	Lignite [MWh]	Natural Gas [MWh]	Hydro [MWh]	RES [MWh]	Imports [MWh]
<b>Total</b>	-	4,594,071.85	390,272.75	2,062,336.18	164,397.51	1,462,096.56	514,968.85
<b>Average</b>	198.37	148,195.87	12,589.44	66,526.97	5,303.15	47,164.41	16,611.90
<b>Min</b>	147.25	127,939.02	7,920.00	37,799.78	2,192.00	24,423.83	4,990.10
<b>Min day</b>	2	10	29	3	28	17	28
<b>Max</b>	253.33	164,764.16	25,105.14	80,897.18	13,466.24	80,007.03	26,765.30
<b>Max day</b>	19	26	14	18	19	28	21
<b>Spread</b>	106.08	36,825.14	17,185.14	43,097.40	11,274.24	55,583.20	21,775.20
<b>Standard Deviation</b>	23.83	9,019.01	4,872.88	9,768.78	2,684.54	17,964.25	6,200.62

<b>Ref No</b>	Table 1.3			
<b>Title</b>	Market Shares per Aggregated Classification - BUY			
<b>Scope</b>	Day Ahead Market (DAM)			
<b>Analysis</b>	Monthly			
Classification	Quantity [MWh]	Share [%]	Value [EUR]	Share [%]
System Losses	104,489.000	2.27%	21,191,219.78€	2.28%
Crete Load	-	0.00%	- €	0.00%
HV Load	669,141.979	14.56%	131,832,335.57€	14.19%
MV Load	921,872.215	20.06%	186,922,488.35€	20.13%
LV Load	2,257,753.965	49.14%	462,267,487.84€	49.77%
PUMP	6,086.280	0.13%	906,152.23€	0.10%
Exports	635,196.000	13.83%	125,677,129.05€	13.53%
<b>Total</b>	<b>4,594,539.439</b>	<b>100.00%</b>	<b>928,796,812.82€</b>	<b>100.00%</b>

<b>Ref No</b>	Table 1.4							
<b>Title</b>	Statistics per Aggregated Classification - BUY							
<b>Scope</b>	Day Ahead Market (DAM)							
<b>Analysis</b>	Monthly							
	MCP [€/MWh]	Total [MWh]	Sys Losses [MWh]	HV [MWh]	MV [MWh]	LV [MWh]	PUMP [MWh]	Exports [MWh]
<b>Total</b>	-	4,594,539.44	104,489.00	669,141.98	921,872.22	2,257,753.96	6,086.28	635,196.00
<b>Average</b>	198.37	148,210.95	3,370.61	21,585.23	29,737.81	72,830.77	320.33	20,490.19
<b>Min</b>	147.25	127,939.07	2,548.00	20,221.57	22,443.54	65,324.52	89.63	11,612.80
<b>Min day</b>	2	10	3	4	24	3	21	21
<b>Max</b>	253.33	164,763.82	4,418.50	23,469.06	33,420.98	78,043.30	580.00	34,255.60
<b>Max day</b>	19	26	29	30	5	26	29	25
<b>Spread</b>	106.08	36,824.75	1,870.50	3,247.49	10,977.44	12,718.78	490.37	22,642.80
<b>Standard Deviation</b>	23.83	9,010.98	498.92	926.53	3,563.85	3,081.55	130.17	5,965.98

## 2. Market Shares

<b>Ref No</b>	Table 2.1.1			
<b>Title</b>	Market Shares - Upward Capacity Reserves Volumes per Type			
<b>Scope</b>	Balancing Market (BM)			
<b>Analysis</b>	Monthly			
<b>Type</b>	<b>Quantity [MW]</b>	<b>Share [%]</b>	<b>Value [EUR]</b>	<b>Share [%]</b>
aFRR	1,452,358.330	72.42%	9,633,567.33€	75.12%
FCR	115,849.830	5.78%	519,788.10€	4.05%
mFRR	437,336.760	21.81%	2,671,399.55€	20.83%
<b>Total</b>	<b>2,005,544.910</b>	<b>100.00%</b>	<b>12,824,754.98€</b>	<b>100.00%</b>

<b>Ref No</b>	Table 2.1.2			
<b>Title</b>	Market Shares - Downward Capacity Reserves per Type			
<b>Scope</b>	Balancing Market(BM)			
<b>Analysis</b>	Monthly			
<b>Type</b>	<b>Quantity [MW]</b>	<b>Share [%]</b>	<b>Value [EUR]</b>	<b>Share [%]</b>
aFRR	368,631.100	34.87%	487,396.84€	41.99%
FCR	134,982.470	12.77%	173,951.56€	14.99%
mFRR	553,572.630	52.36%	499,349.30€	43.02%
<b>Total</b>	<b>1,057,186.200</b>	<b>100.00%</b>	<b>1,160,697.71€</b>	<b>100.00%</b>

<b>Ref No</b>	Table 2.1.3
<b>Title</b>	Market Shares - Upward Activated Balancing Energy per Type
<b>Scope</b>	Balancing Market (BM)
<b>Analysis</b>	Monthly

Type	Quantity [MWh]	Share [%]	Value [EUR]	Share [%]
aFRR	126,830.150	51.82%	32,328,087.73€	50.81%
mFRR	117,897.840	48.18%	31,299,118.09€	49.19%
<b>Total</b>	<b>244,727.990</b>	<b>100.00%</b>	<b>63,627,205.83€</b>	<b>100.00%</b>

<b>Ref No</b>	Table 2.1.4
<b>Title</b>	Market Shares - Downward Activated Balancing Energy per Type
<b>Scope</b>	Balancing Market (BM)
<b>Analysis</b>	Monthly

Type	Quantity [MWh]	Share [%]	Value [EUR]	Share [%]
aFRR	85,357.960	33.77%	7,308,783.18€	31.29%
mFRR	167,406.020	66.23%	16,047,862.33€	68.71%
<b>Total</b>	<b>252,763.980</b>	<b>100.00%</b>	<b>23,356,645.51€</b>	<b>100.00%</b>

### 3. Market Overview

<b>Ref No</b>	Table 3.1
<b>Title</b>	Total Transactions Quantity per Market
<b>Scope</b>	DAM, IDM, Balancing Energy Market
<b>Analysis</b>	Monthly

Market	Quantity [MWh]	Share [%]
DAM	4,594,071.85	97.27%
IDMA1	55,938.38	1.18%
IDMA2	50,961.66	1.08%
IDMA3	30,020.50	0.64%
IDM (Total)	136,920.55	2.90%
Balancing Energy (Up)	244,727.99	5.18%
Balancing Energy (Dn)	252,763.98	5.35%
Balancing Energy (Total)	-8,035.99	-0.17%
<b>Total</b>	<b>4,722,956.41</b>	<b>100.00%</b>

<b>Ref No</b>	Table 3.2
<b>Title</b>	Total Transactions Value per Market
<b>Scope</b>	DAM, IDM, Balancing Energy Market
<b>Analysis</b>	Monthly

Market	Value [EUR]	Share [%]
DAM	928,714,461.19€	91.70%
IDMA1	12,580,595.80€	1.24%
IDMA2	10,565,918.04€	1.04%
IDMA3	6,627,656.85€	0.65%
IDM (Total)	29,774,170.69€	2.94%
Balancing Capacity (Up)	12,824,754.98€	1.27%
Balancing Capacity (Dn)	1,160,697.71€	0.11%
Balancing Capacity (Total)	13,985,452.69€	1.38%
Balancing Energy (Up)	63,627,205.83€	6.28%
Balancing Energy (Dn)	23,356,645.51€	2.31%
Balancing Energy (Total)	40,270,560.32€	3.98%
Balancing Market (Total)	54,256,013.01€	5.36%
<b>Total</b>	<b>1,012,744,644.89€</b>	<b>100.00%</b>