

# Market Monitoring Report

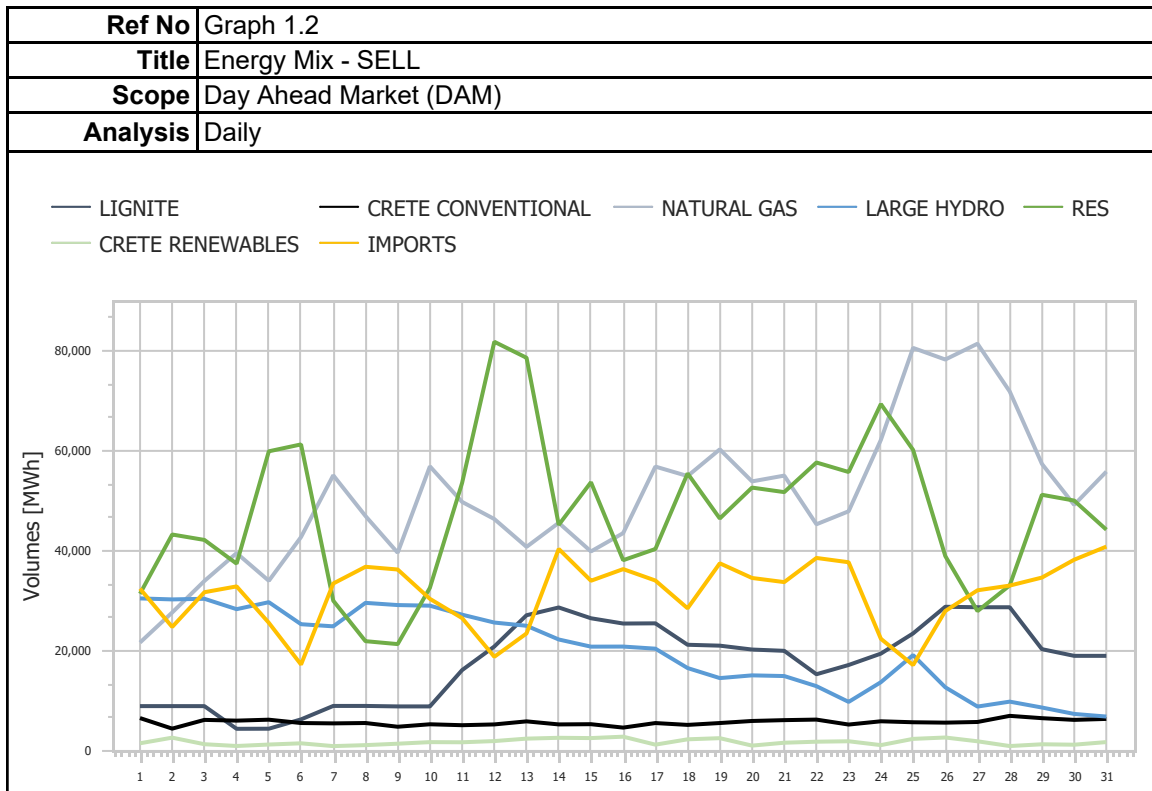
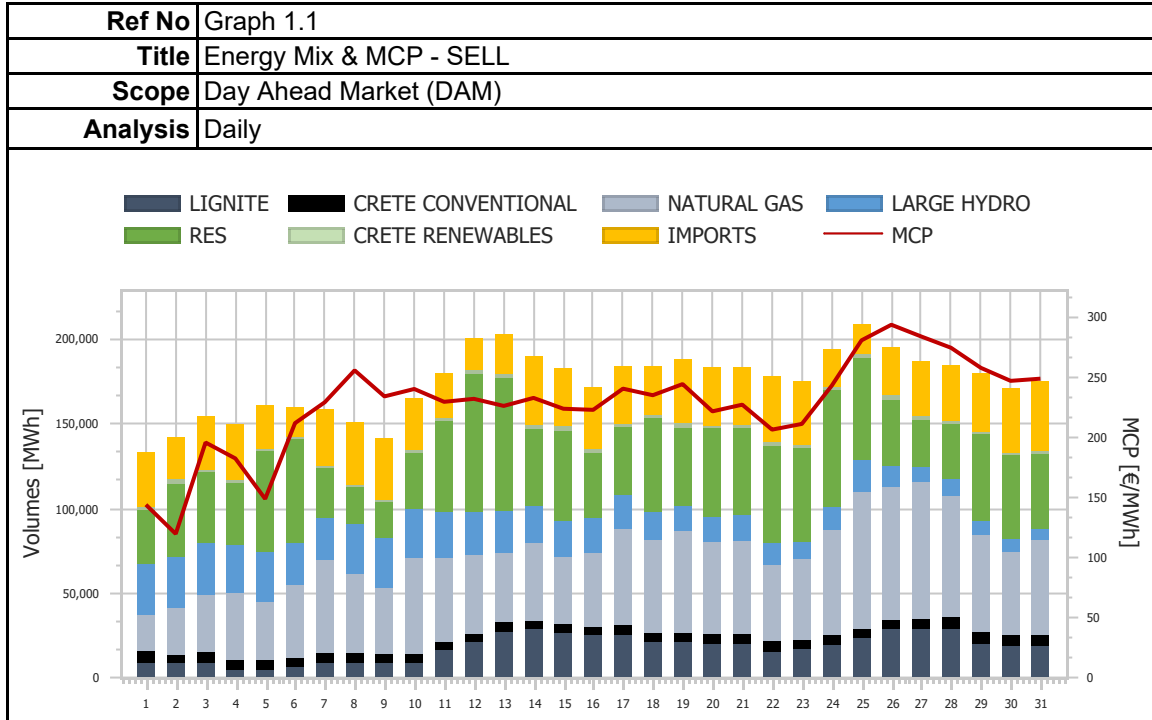
Monthly - Public - 2

**01-2022**

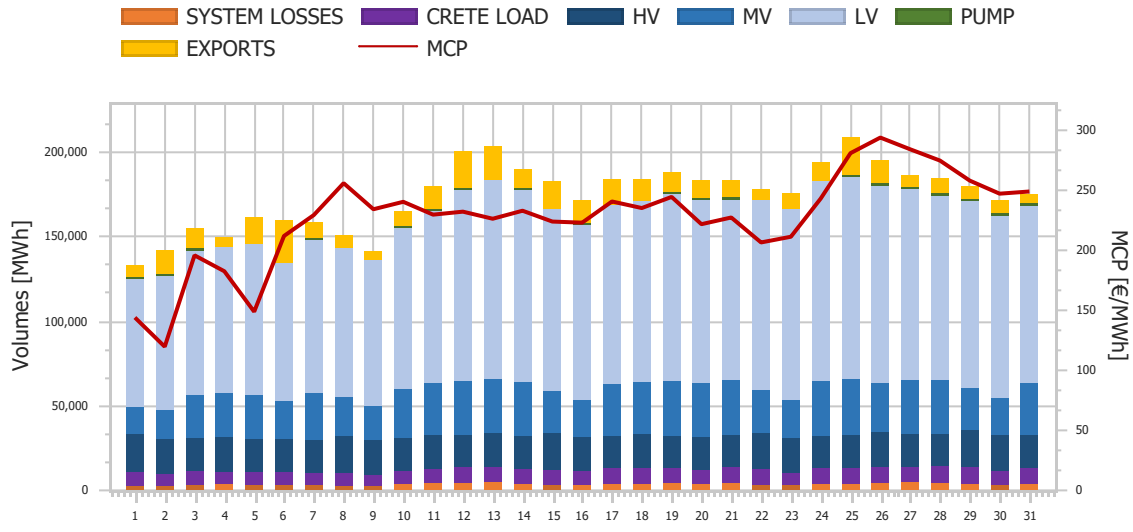


ΡΥΘΜΙΣΤΙΚΗ ΑΡΧΗ ΕΝΕΡΓΕΙΑΣ  
REGULATORY AUTHORITY FOR ENERGY

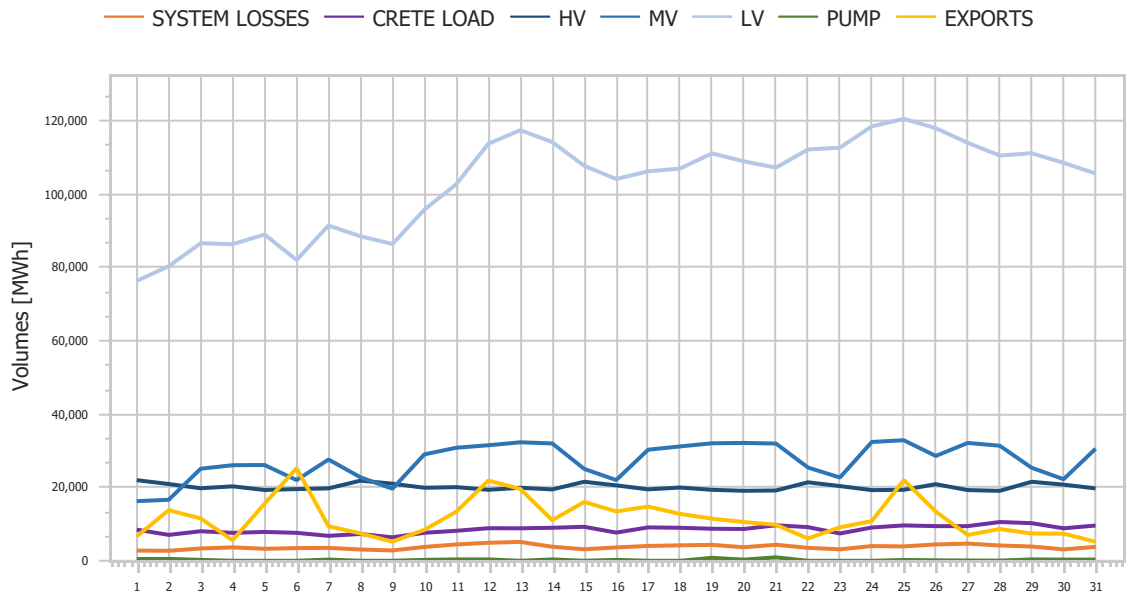
# 1. Day Ahead Market (DAM)



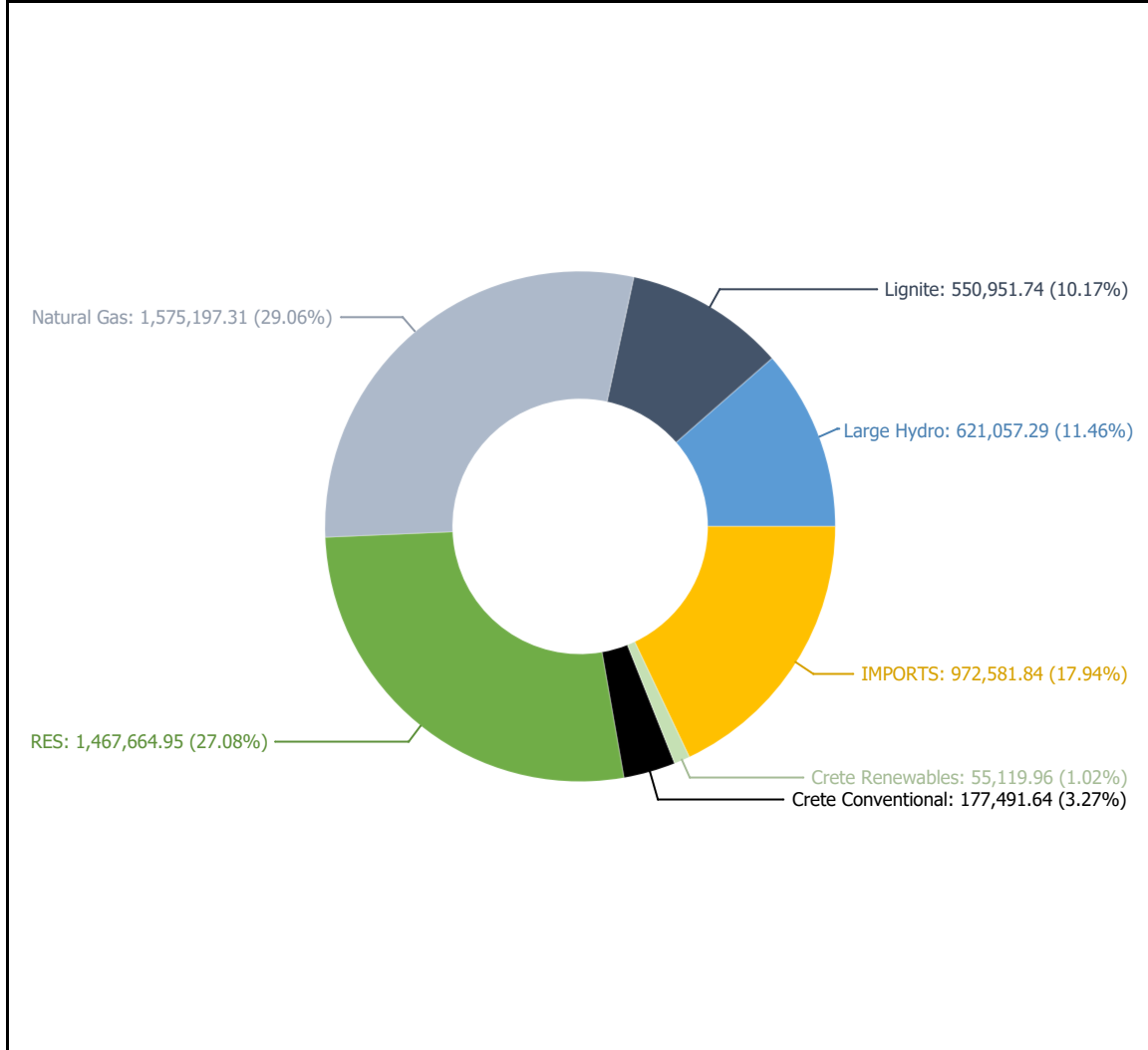
<b>Ref No</b>	Graph 1.3
<b>Title</b>	Energy Mix & MCP - BUY
<b>Scope</b>	Day Ahead Market (DAM)
<b>Analysis</b>	Daily



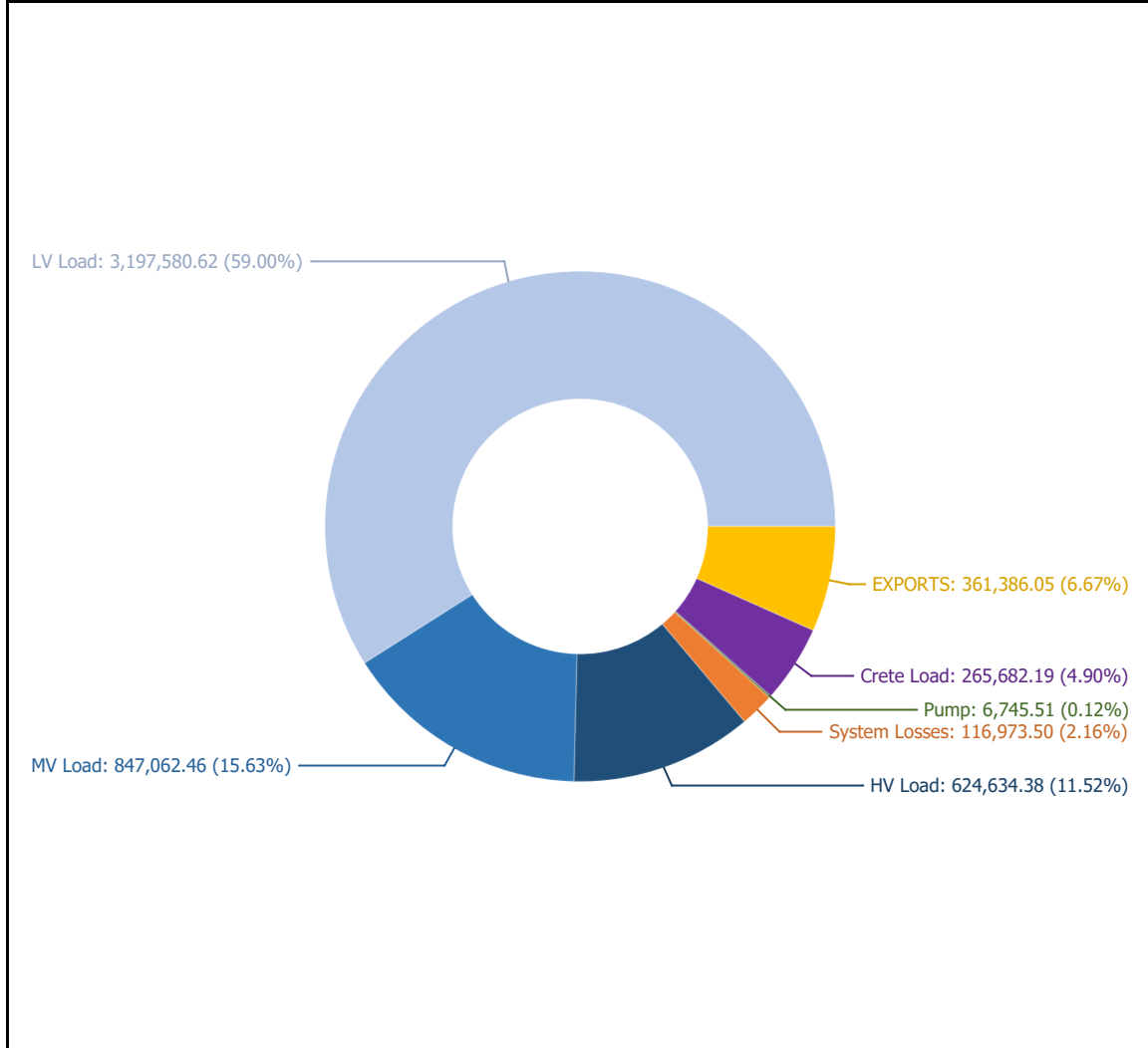
<b>Ref No</b>	Graph 1.4
<b>Title</b>	Energy Mix - BUY
<b>Scope</b>	Day Ahead Market (DAM)
<b>Analysis</b>	Daily

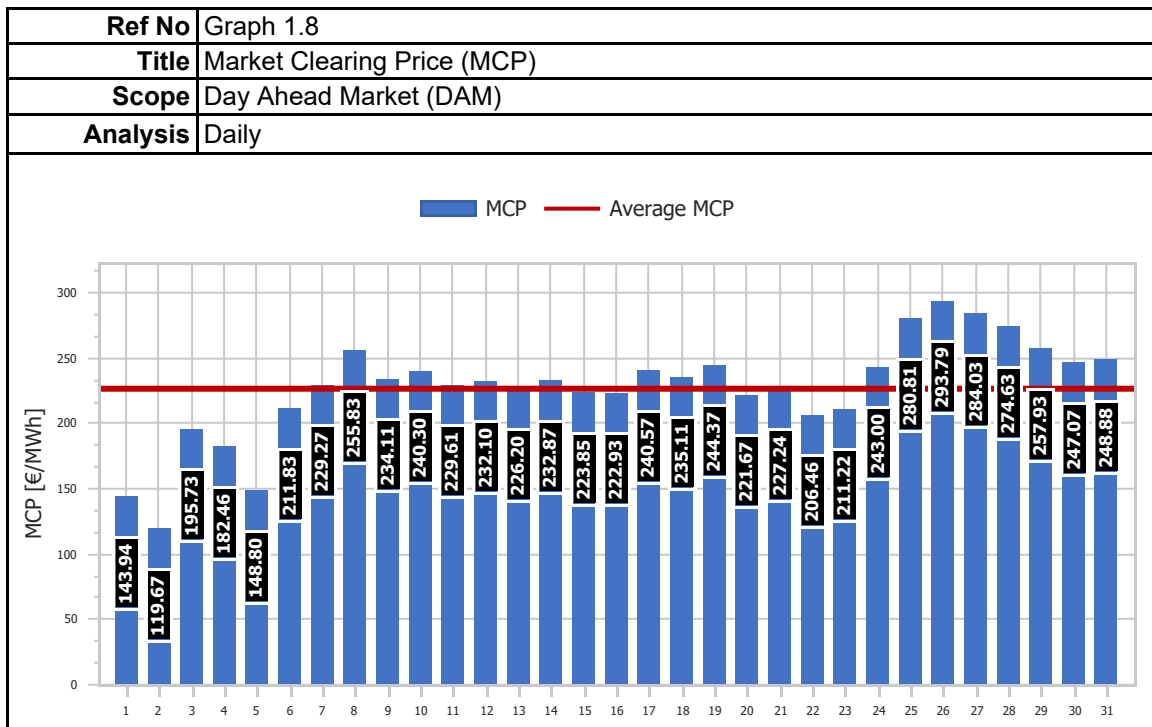
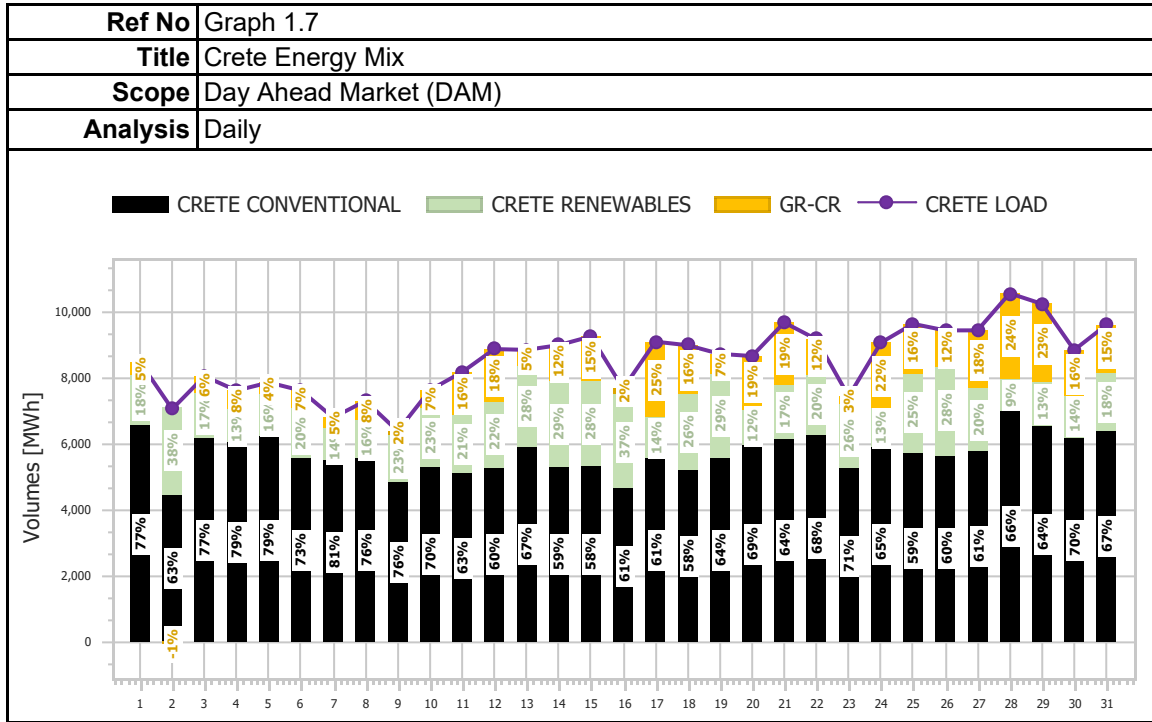


<b>Ref No</b>	Graph 1.5
<b>Title</b>	Energy Mix - SELL
<b>Scope</b>	Day Ahead Market (DAM)
<b>Analysis</b>	Daily

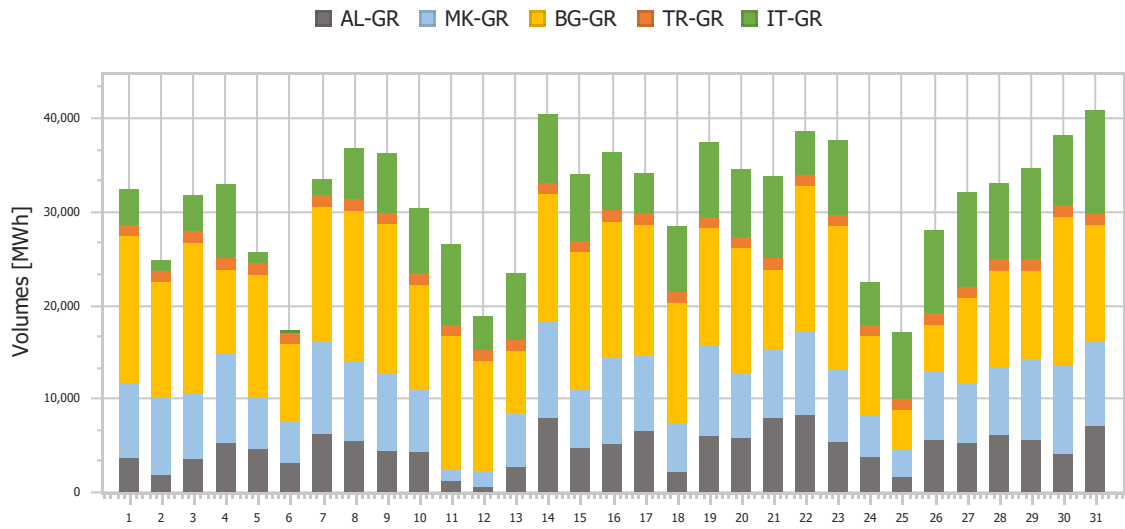


<b>Ref No</b>	Graph 1.6
<b>Title</b>	Energy Mix - BUY
<b>Scope</b>	Day Ahead Market (DAM)
<b>Analysis</b>	Daily

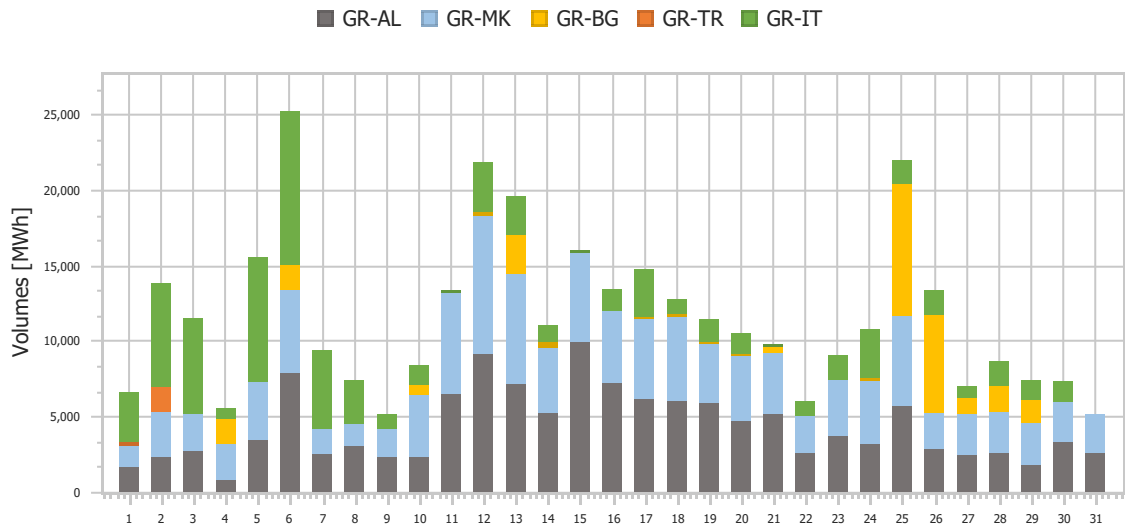




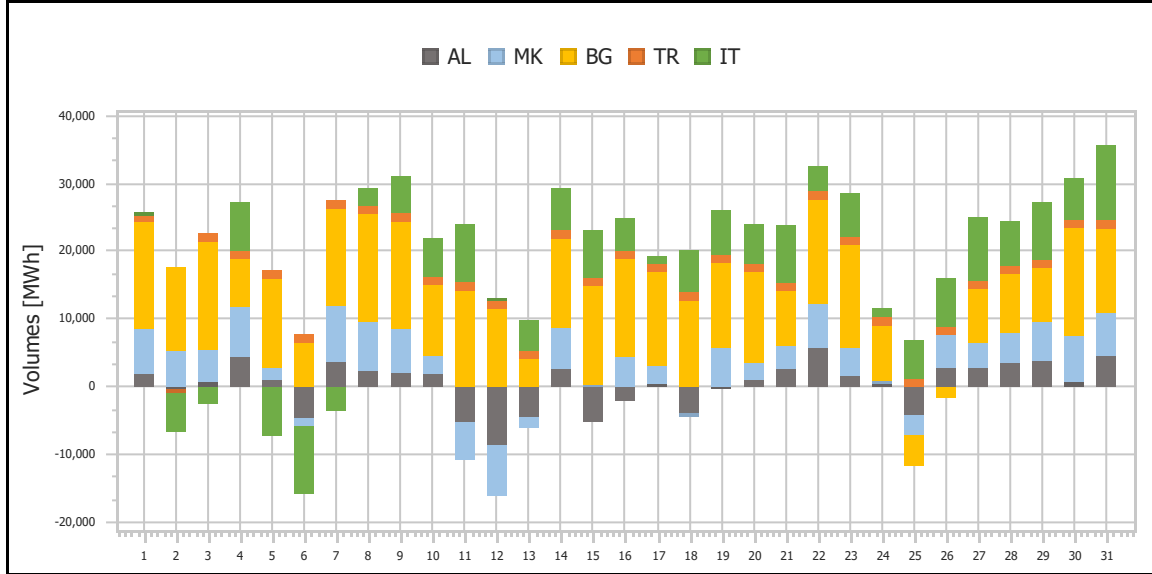
<b>Ref No</b>	Graph 1.9
<b>Title</b>	Imports per Border
<b>Scope</b>	Day Ahead Market (DAM)
<b>Analysis</b>	Daily



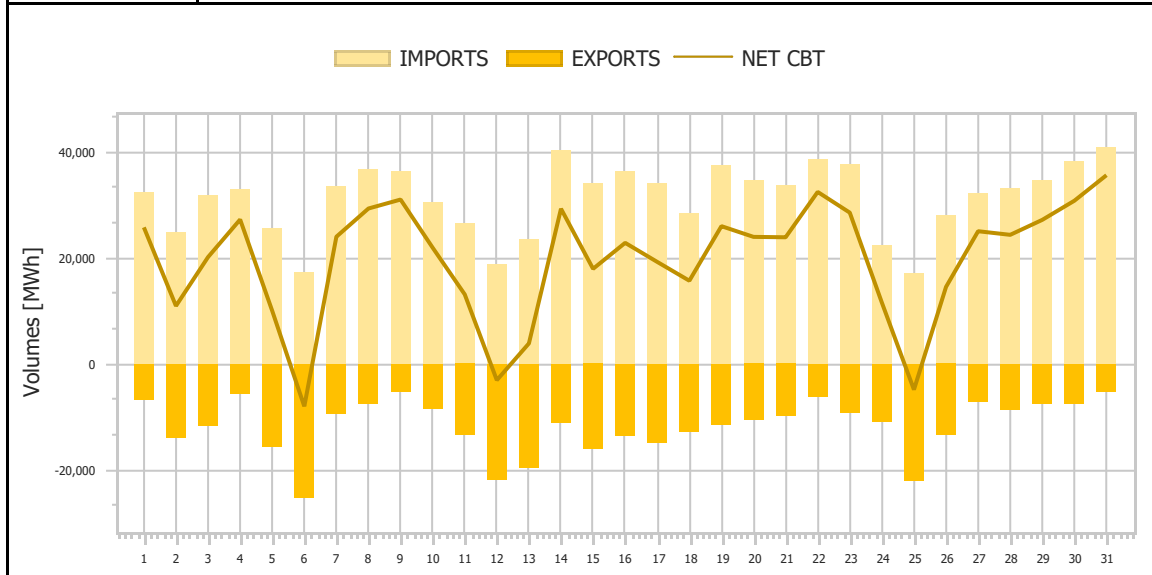
<b>Ref No</b>	Graph 1.10
<b>Title</b>	Exports per Border
<b>Scope</b>	Day Ahead Market (DAM)
<b>Analysis</b>	Daily



<b>Ref No</b>	Graph 1.11
<b>Title</b>	Net Imports per Border
<b>Scope</b>	Day Ahead Market (DAM)
<b>Analysis</b>	Daily

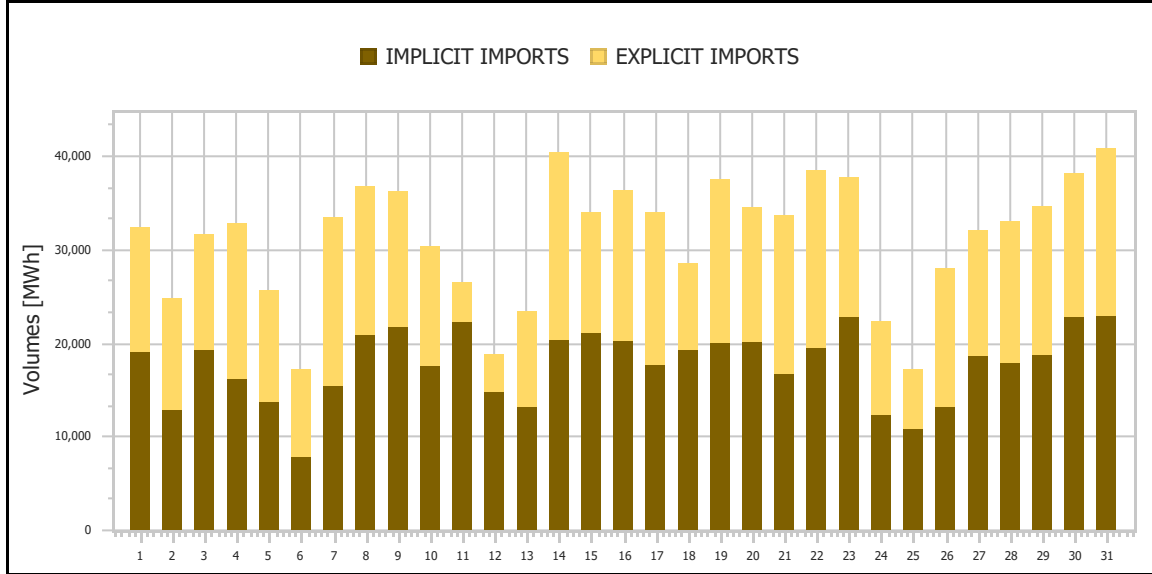


<b>Ref No</b>	Graph 1.12
<b>Title</b>	Total Imports & Exports
<b>Scope</b>	Day Ahead Market (DAM)
<b>Analysis</b>	Daily

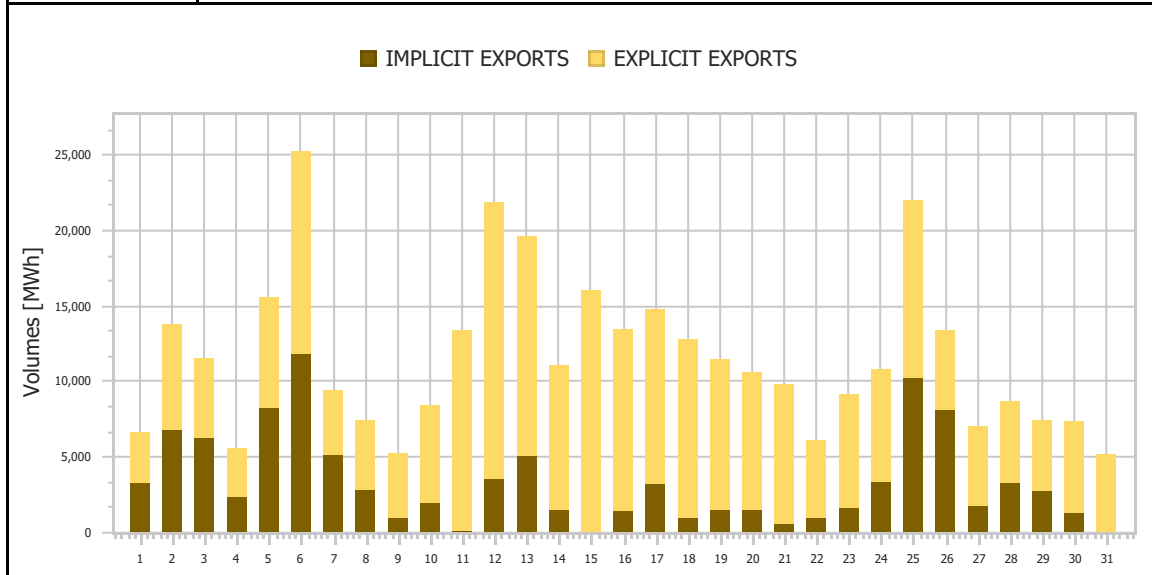


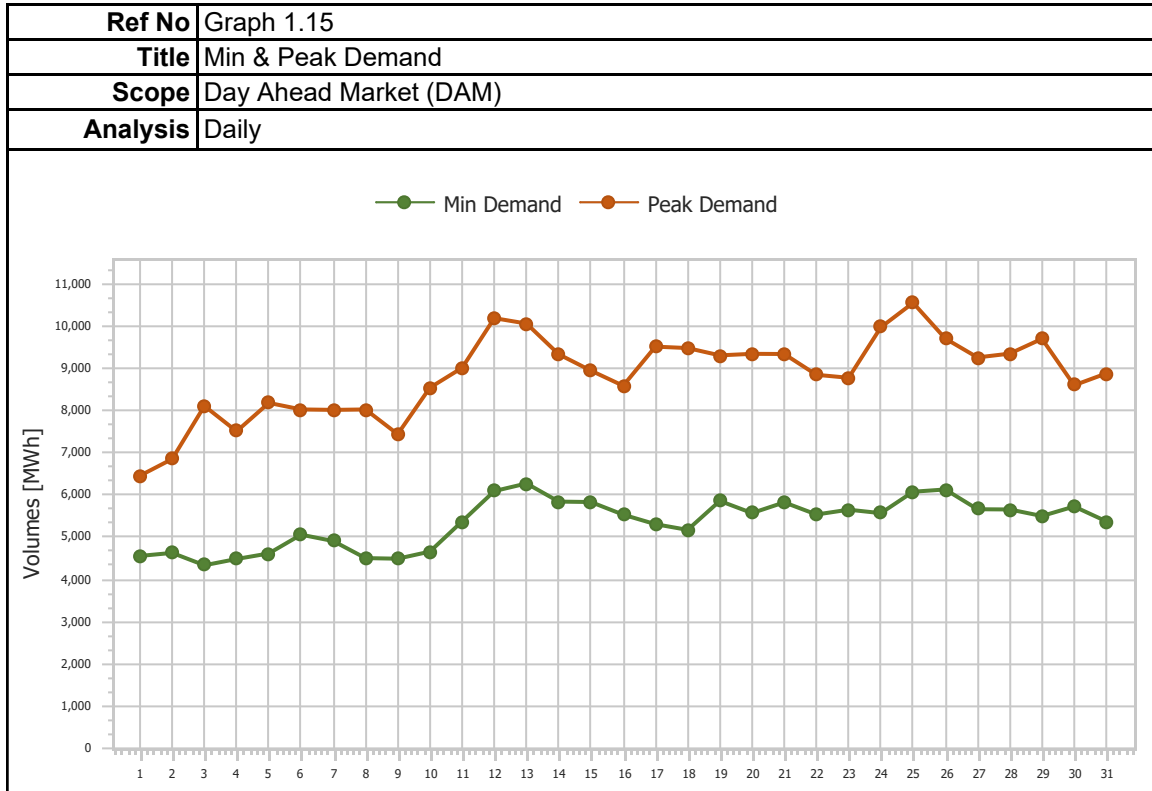


<b>Ref No</b>	Graph 1.13
<b>Title</b>	Imports (Implicit/Explicit)
<b>Scope</b>	Day Ahead Market (DAM)
<b>Analysis</b>	Daily

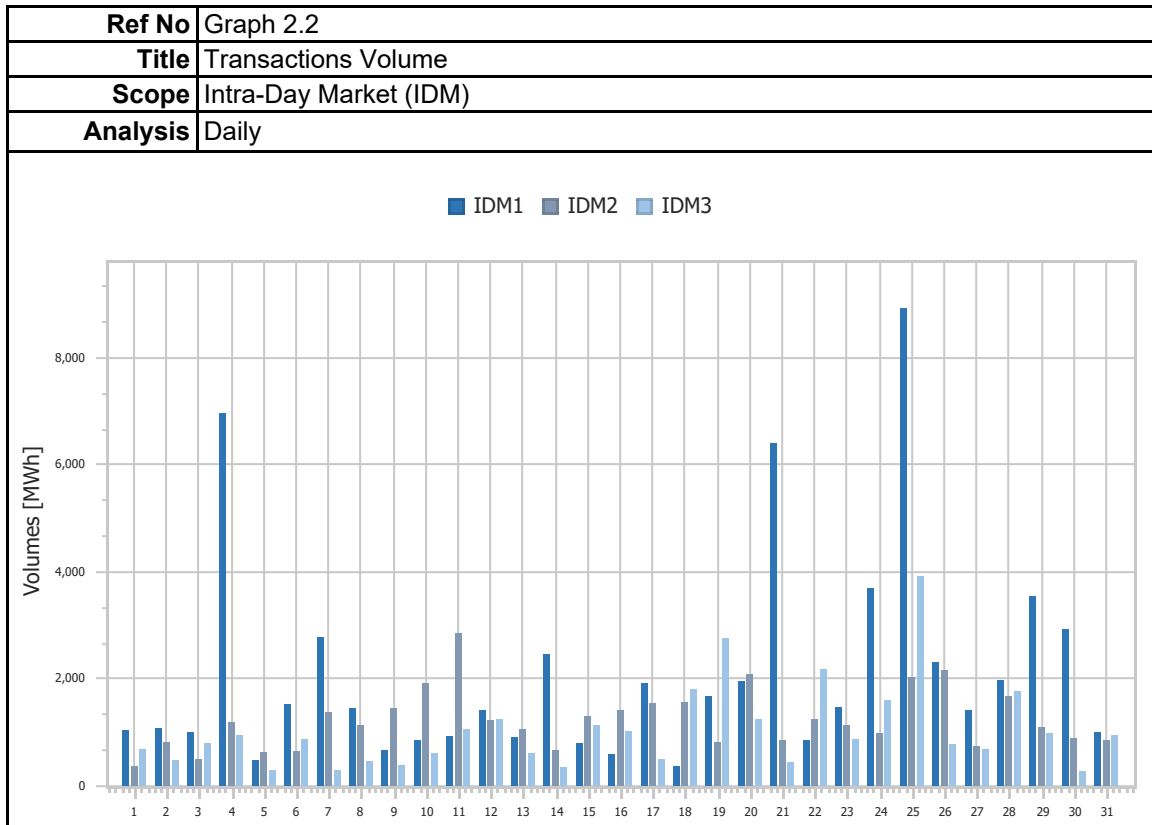
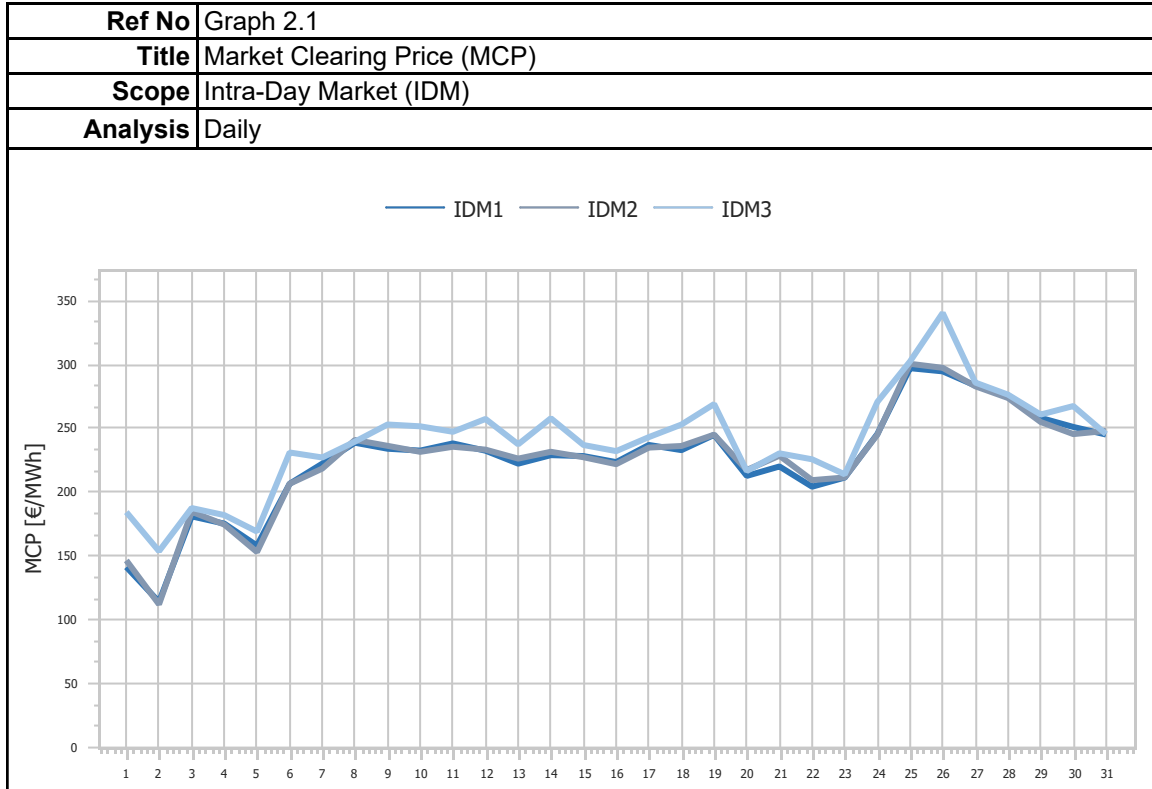


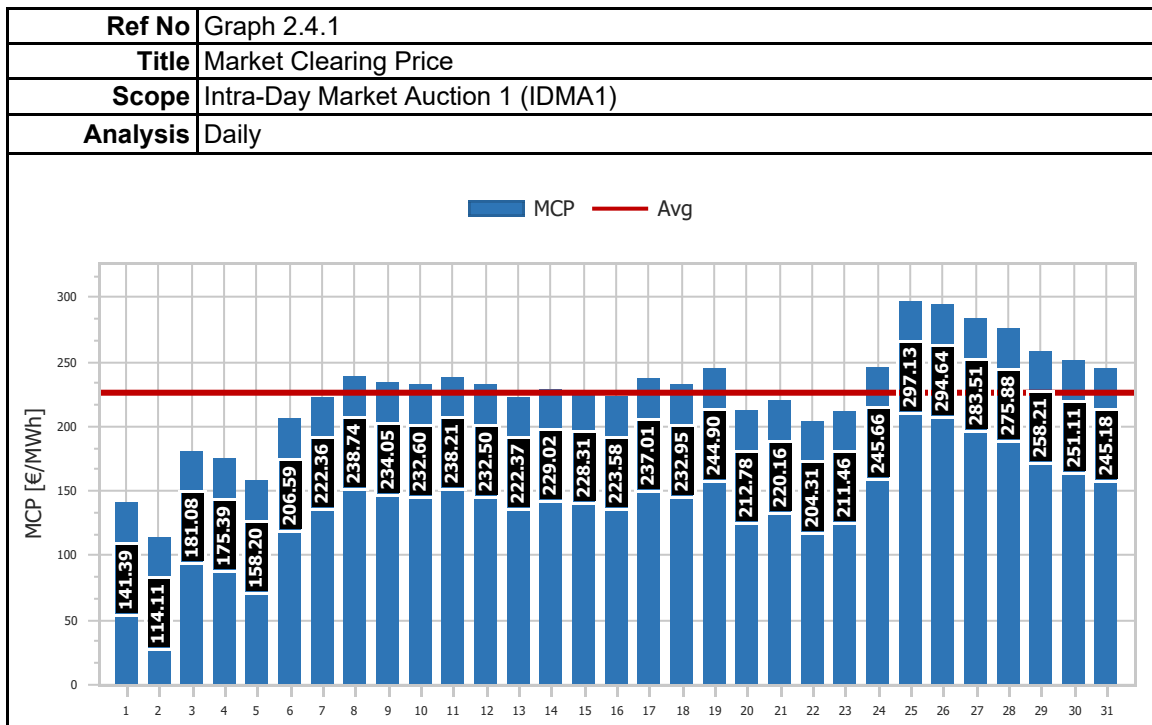
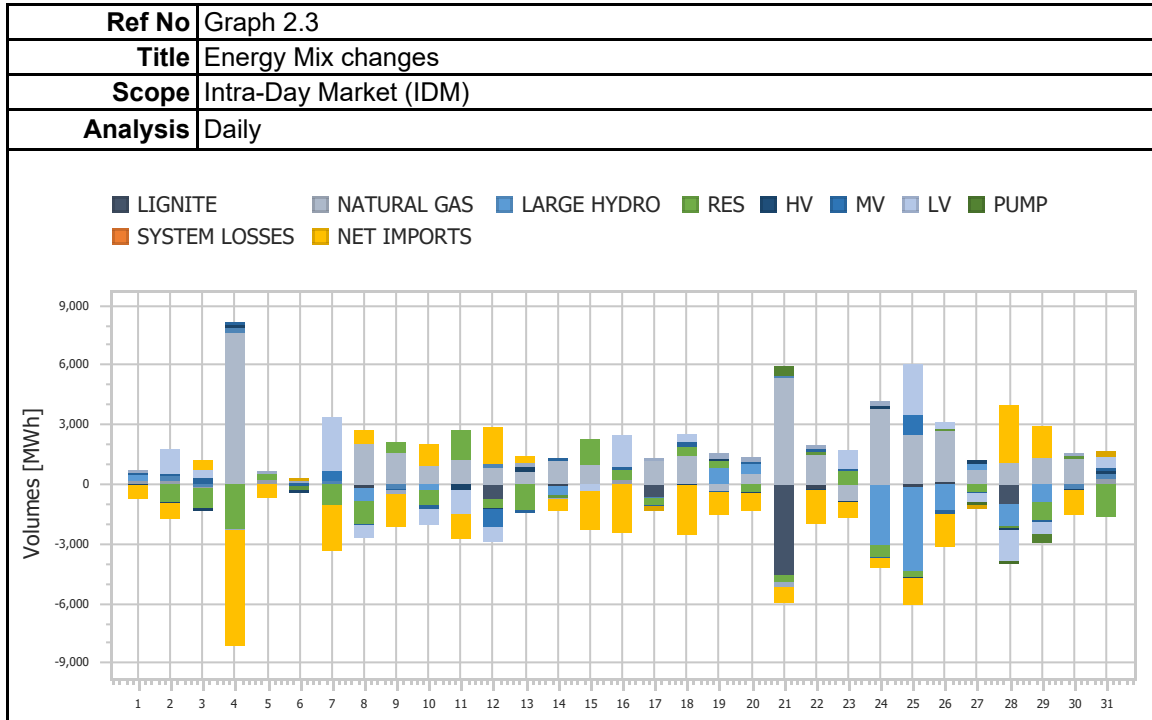
<b>Ref No</b>	Graph 1.14
<b>Title</b>	Exports (Implicit/Explicit)
<b>Scope</b>	Day Ahead Market (DAM)
<b>Analysis</b>	Monthly



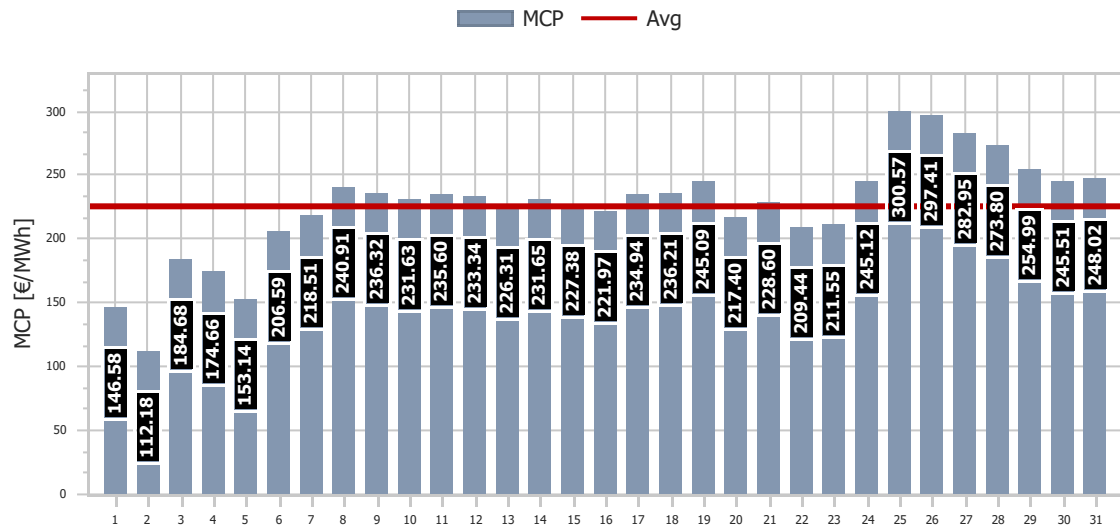


## 2. Intra-Day Market (IDM)

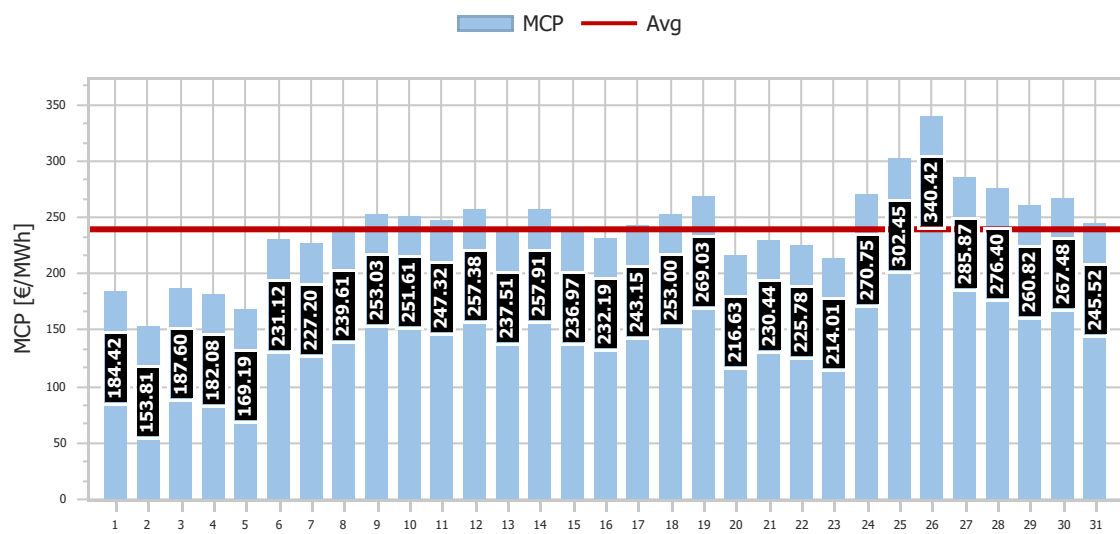




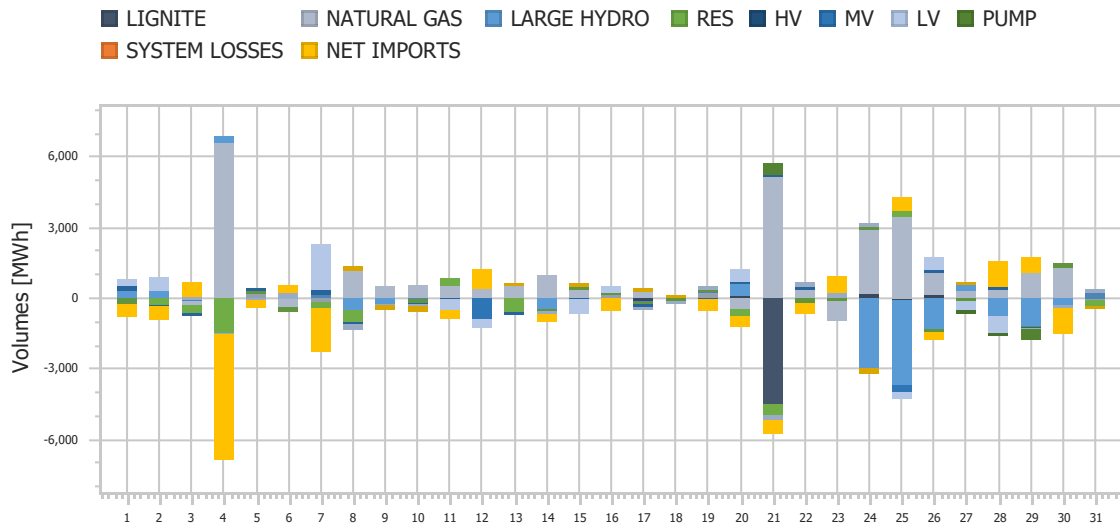
<b>Ref No</b>	Graph 2.4.2
<b>Title</b>	Market Clearing Price
<b>Scope</b>	Intra-Day Market Auction 2 (IDMA2)
<b>Analysis</b>	Daily



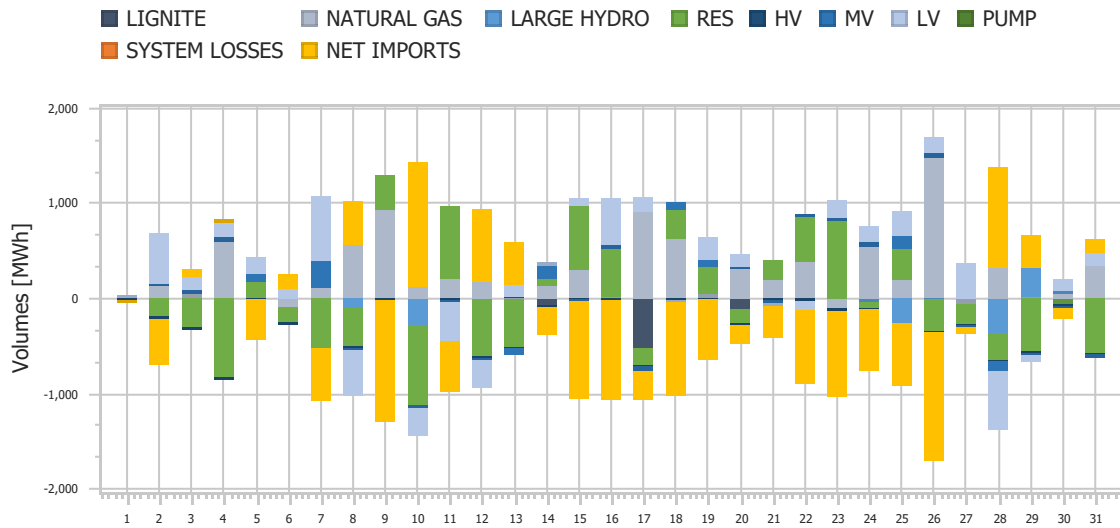
<b>Ref No</b>	Graph 2.4.3
<b>Title</b>	Market Clearing Price
<b>Scope</b>	Intra-Day Market Auction 3 (IDMA3)
<b>Analysis</b>	Daily



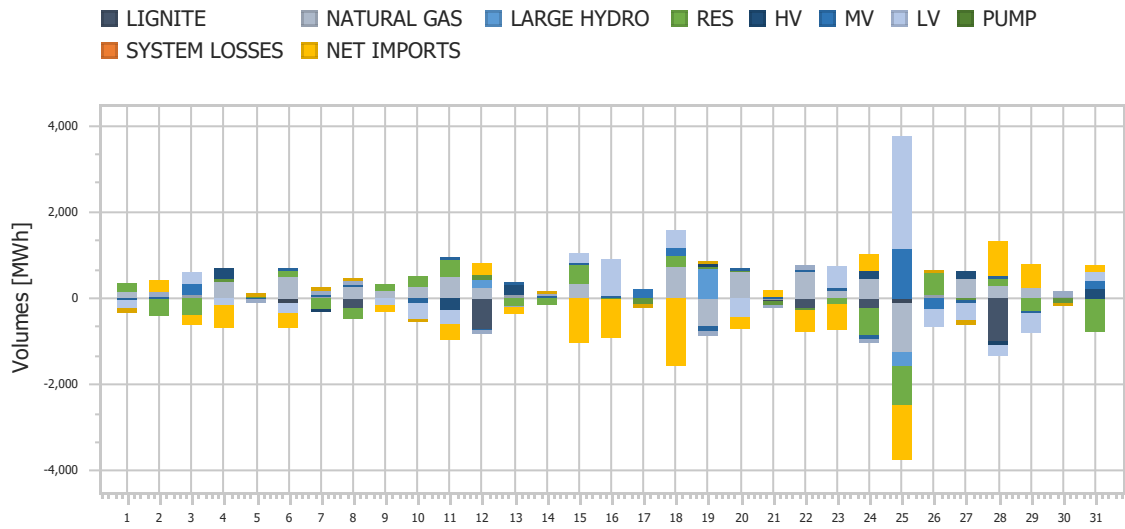
<b>Ref No</b>	Graph 2.5.1
<b>Title</b>	IDM Energy Mix Changes
<b>Scope</b>	Intra-Day Market Auction 1 (IDMA1)
<b>Analysis</b>	Daily



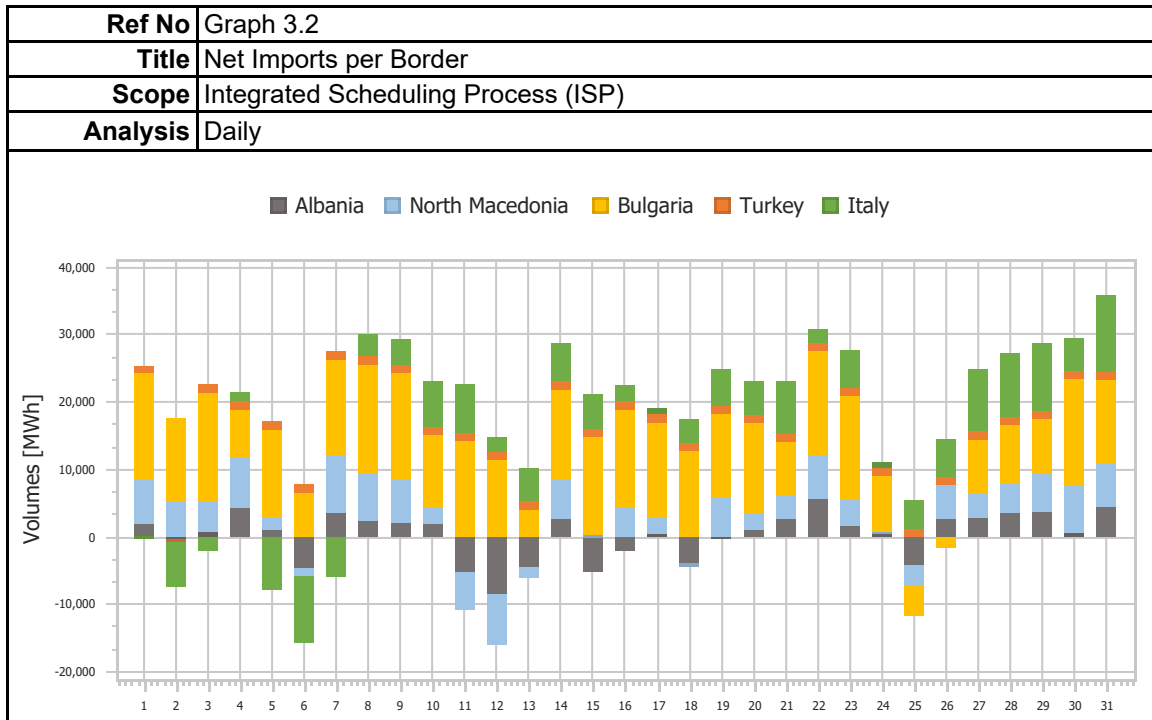
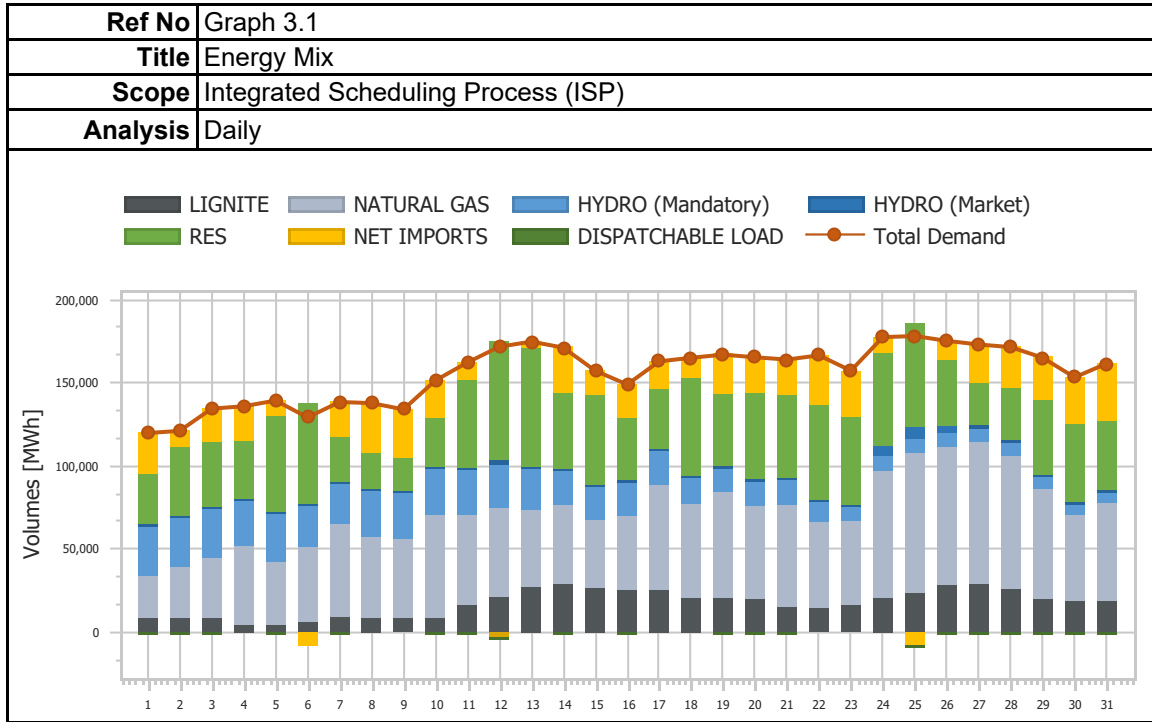
<b>Ref No</b>	Graph 2.5.2
<b>Title</b>	IDM Energy Mix Changes
<b>Scope</b>	Intra-Day Market Auction 2 (IDMA2)
<b>Analysis</b>	Daily



<b>Ref No</b>	Graph 2.5.3
<b>Title</b>	IDM Energy Mix Changes
<b>Scope</b>	Intra-Day Market Auction 3 (IDMA3)
<b>Analysis</b>	Daily

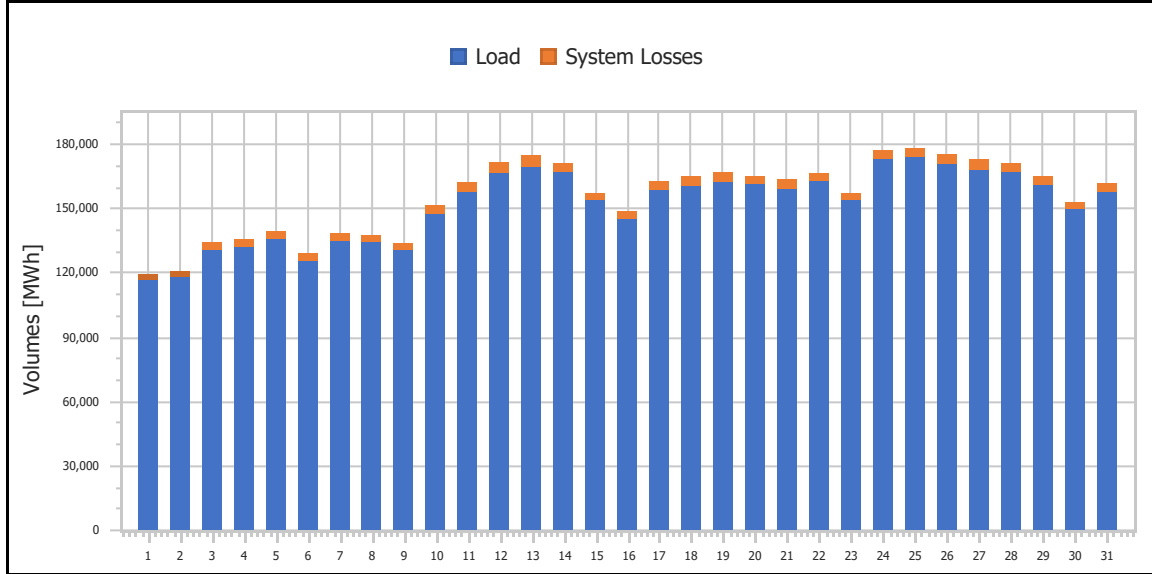


### 3. Integrated Scheduling Process (ISP)

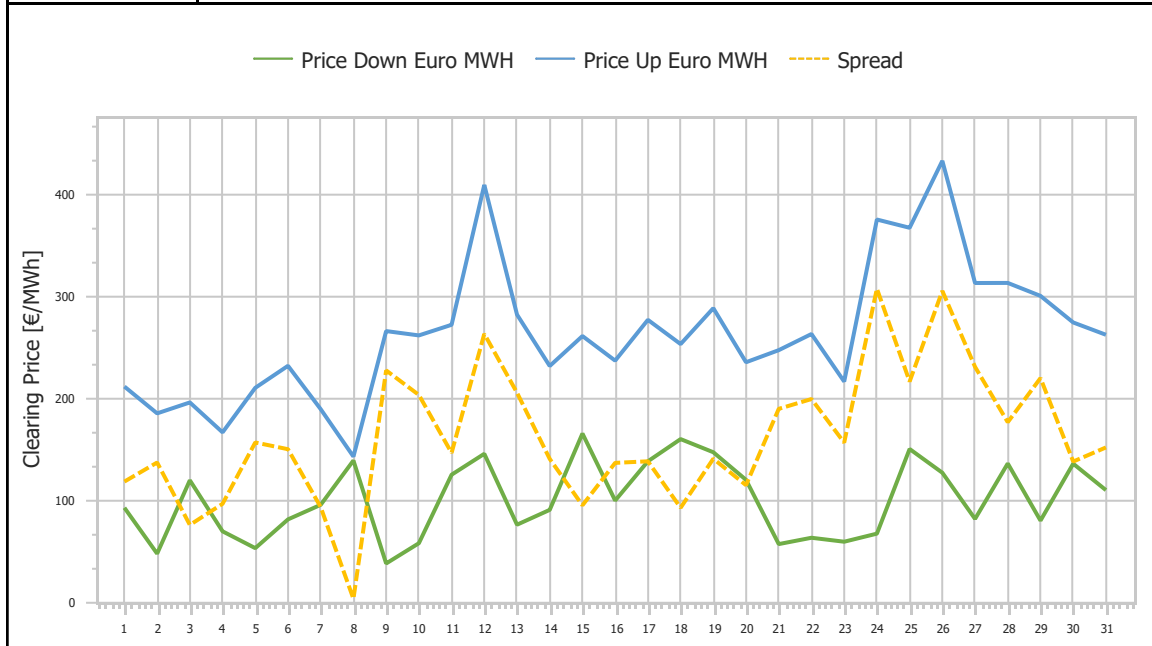




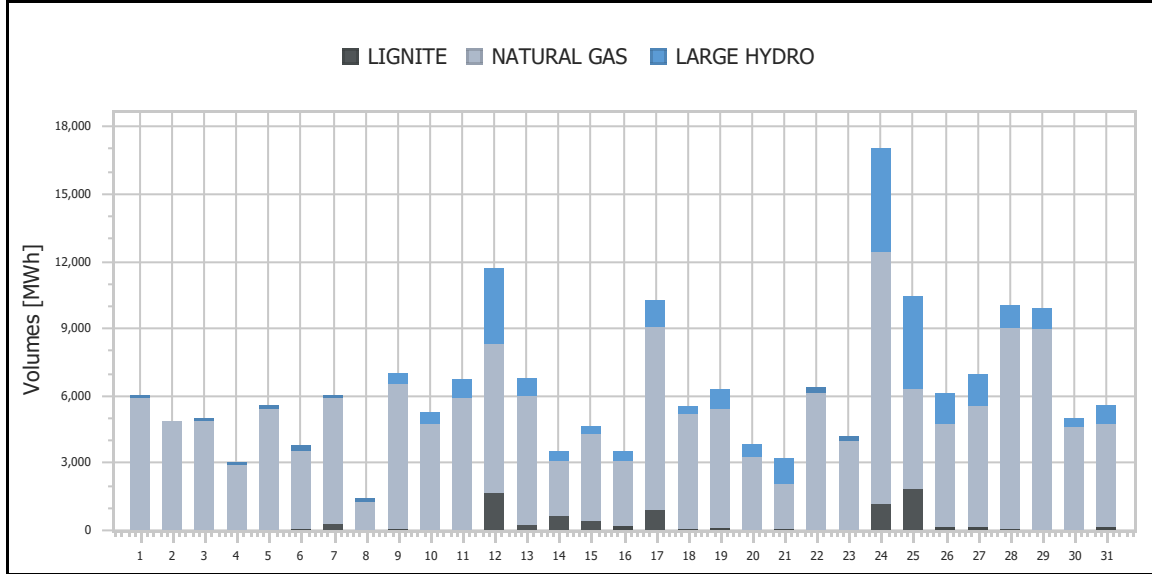
<b>Ref No</b>	Graph 3.3
<b>Title</b>	Demand & System Losses
<b>Scope</b>	Integrated Scheduling Process (ISP)
<b>Analysis</b>	Daily



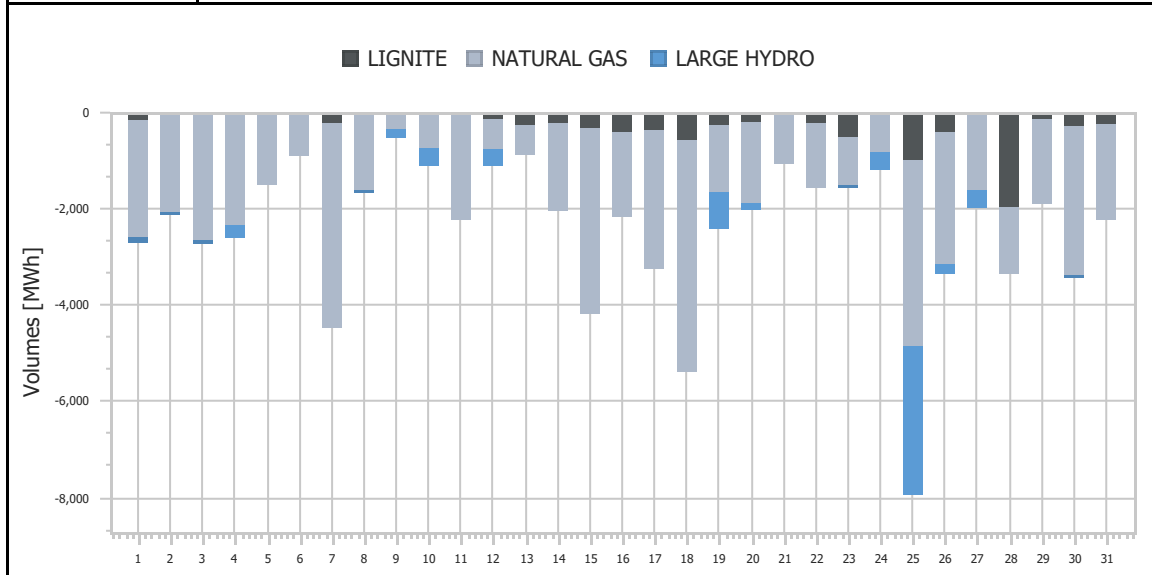
<b>Ref No</b>	Graph 3.4
<b>Title</b>	Clearing Prices
<b>Scope</b>	Integrated Scheduling Process (ISP)
<b>Analysis</b>	Daily



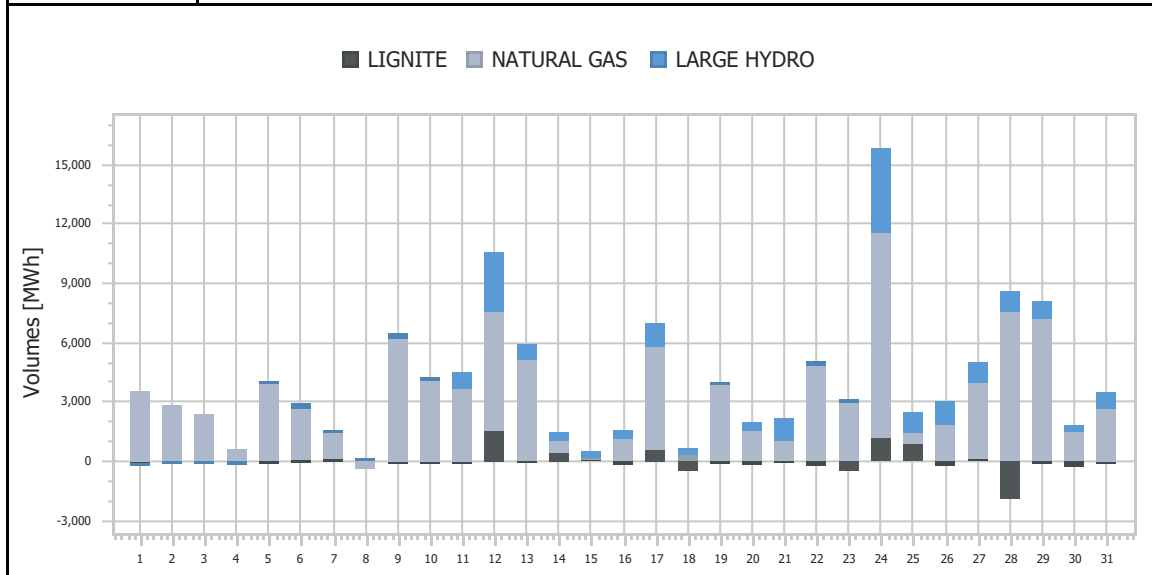
<b>Ref No</b>	Graph 3.5
<b>Title</b>	Upward Activated Balancing energy
<b>Scope</b>	Integrated Scheduling Process (ISP)
<b>Analysis</b>	Daily



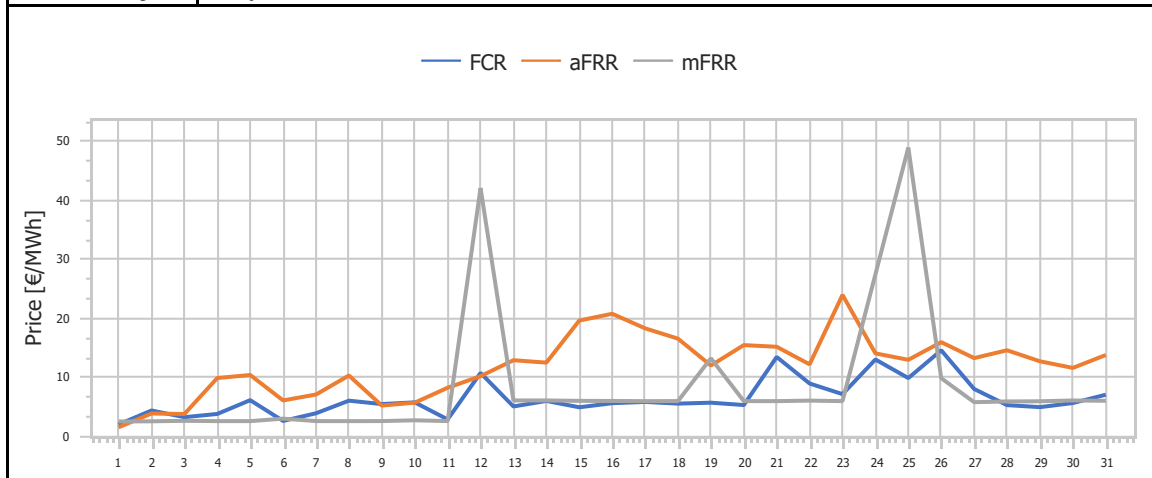
<b>Ref No</b>	Graph 3.6
<b>Title</b>	Downward Activated Balancing energy
<b>Scope</b>	Integrated Scheduling Process (ISP)
<b>Analysis</b>	Daily



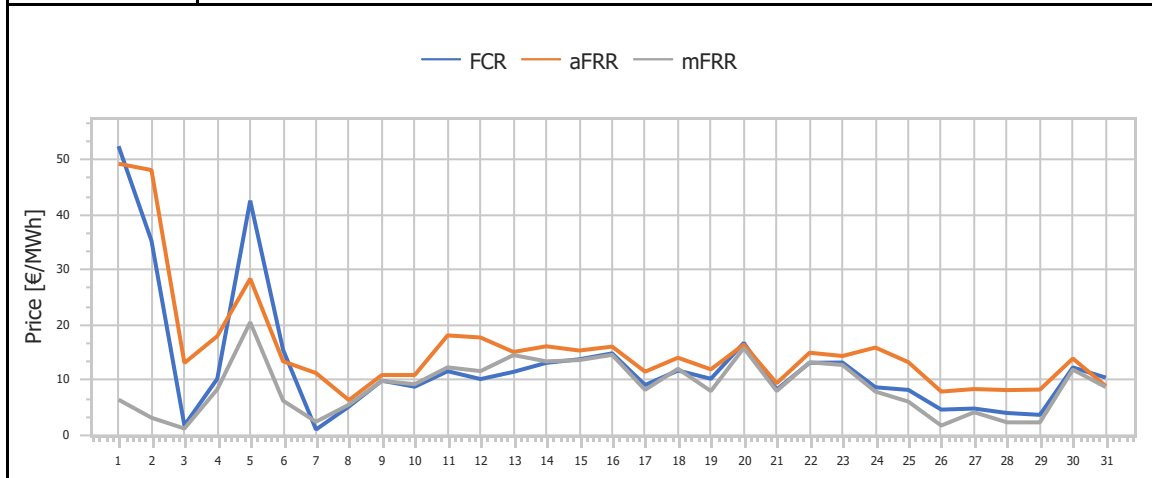
<b>Ref No</b>	Graph 3.7
<b>Title</b>	Net Activated Balancing energy
<b>Scope</b>	Integrated Scheduling Process (ISP)
<b>Analysis</b>	Daily



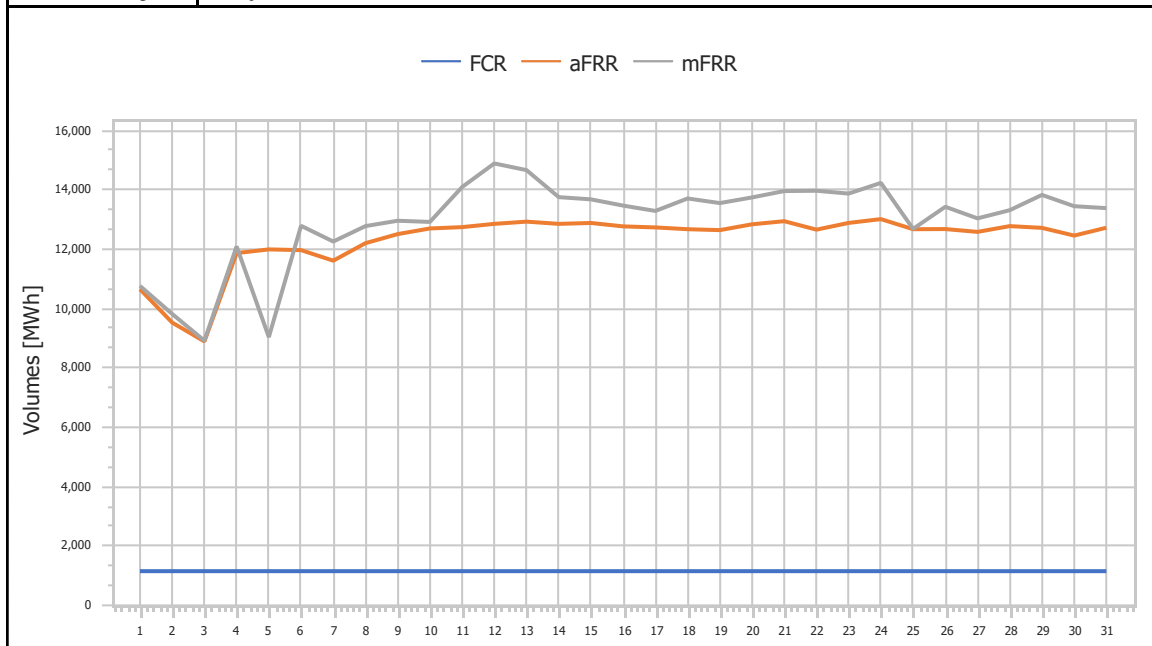
<b>Ref No</b>	Graph 3.8
<b>Title</b>	Upward Capacity Reserves Prices
<b>Scope</b>	Integrated Scheduling Process (ISP)
<b>Analysis</b>	Daily



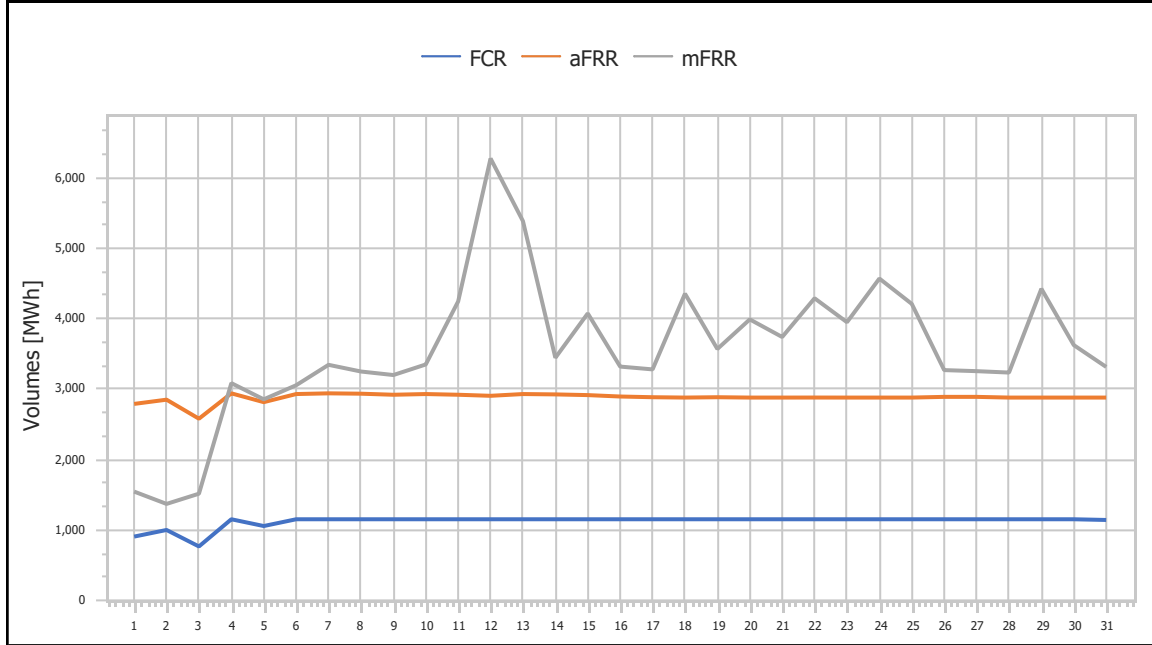
<b>Ref No</b>	Graph 3.9
<b>Title</b>	Downward Capacity Reserves Prices
<b>Scope</b>	Integrated Scheduling Process (ISP)
<b>Analysis</b>	Daily



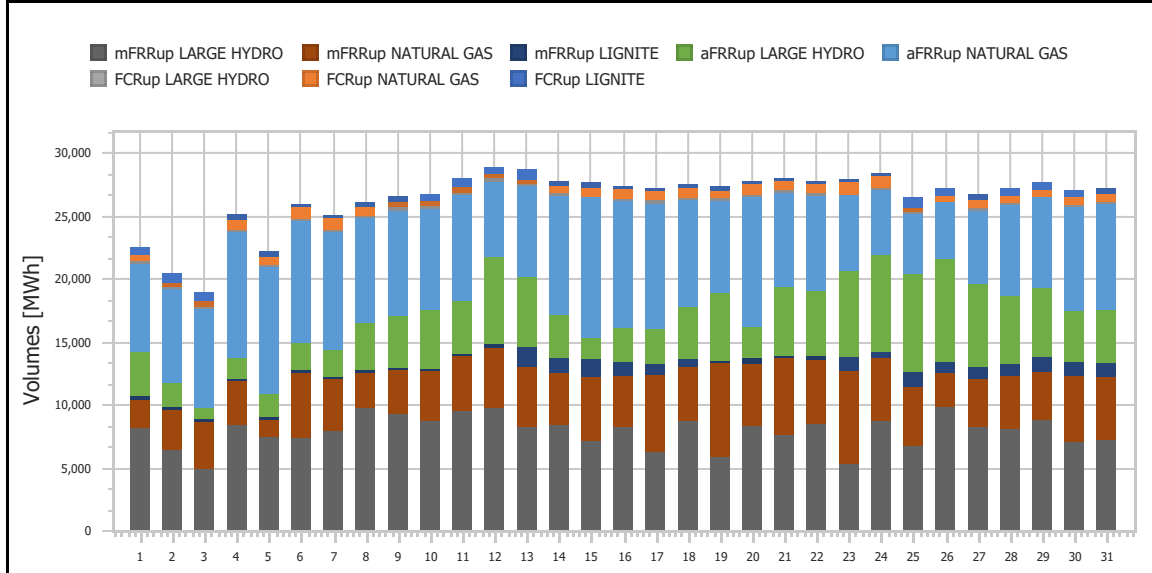
<b>Ref No</b>	Graph 3.10
<b>Title</b>	Upward Capacity Reserves Volumes
<b>Scope</b>	Integrated Scheduling Process (ISP)
<b>Analysis</b>	Daily

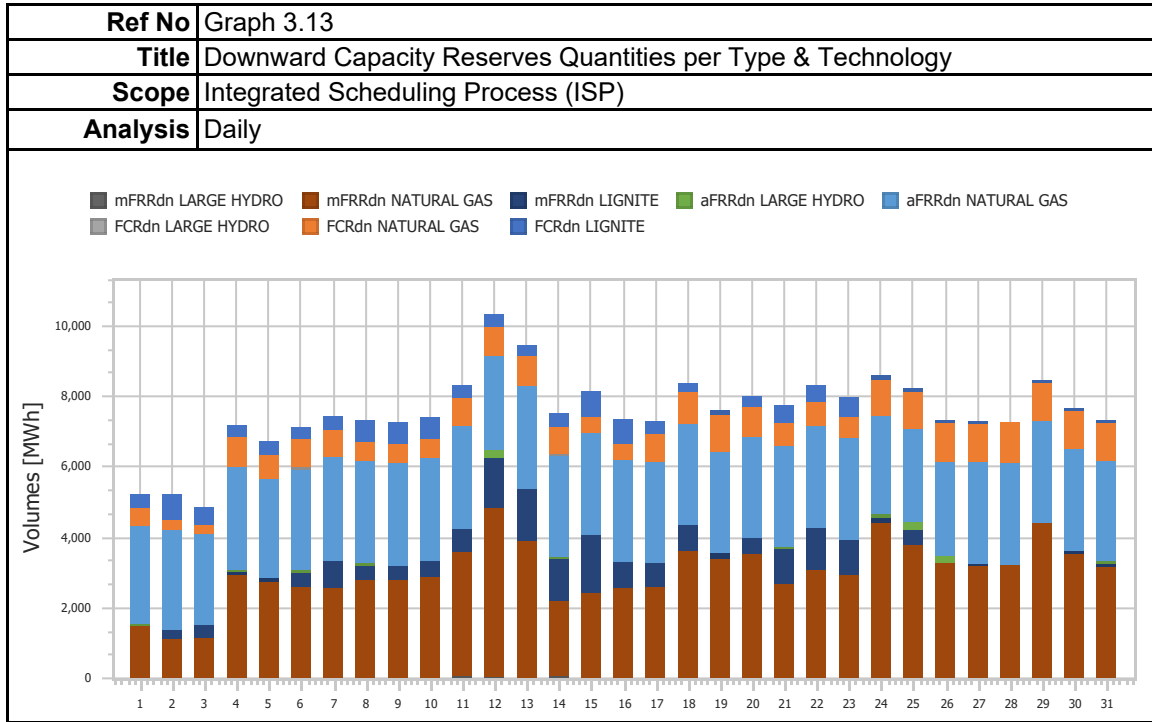


<b>Ref No</b>	Graph 3.11
<b>Title</b>	Downward Capacity Reserves Volumes
<b>Scope</b>	Integrated Scheduling Process (ISP)
<b>Analysis</b>	Daily

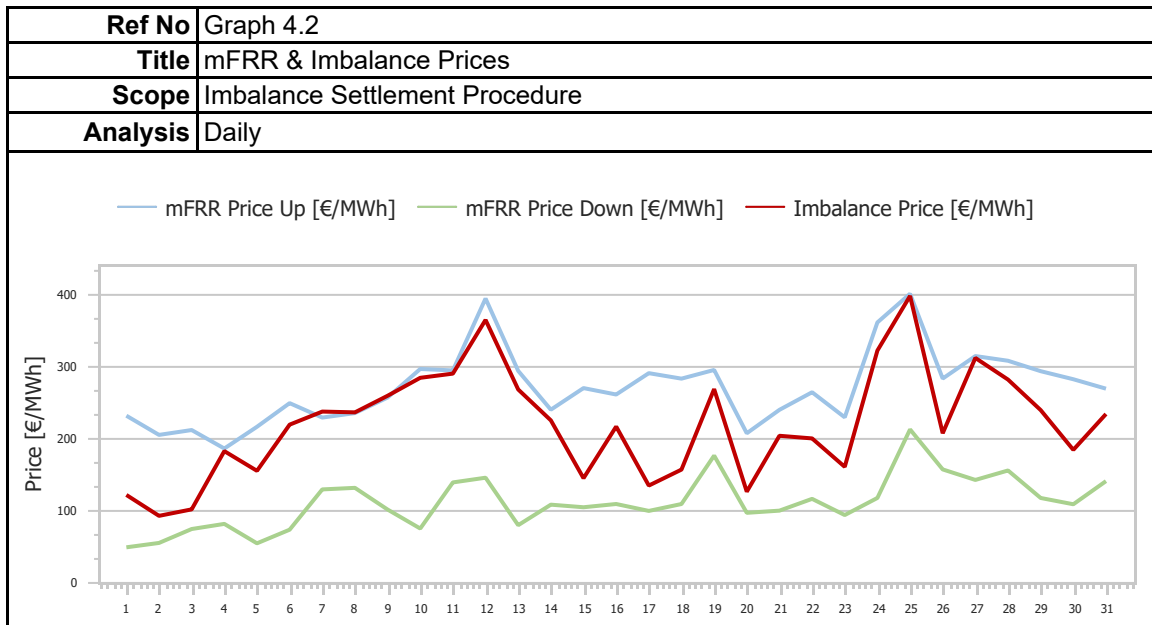
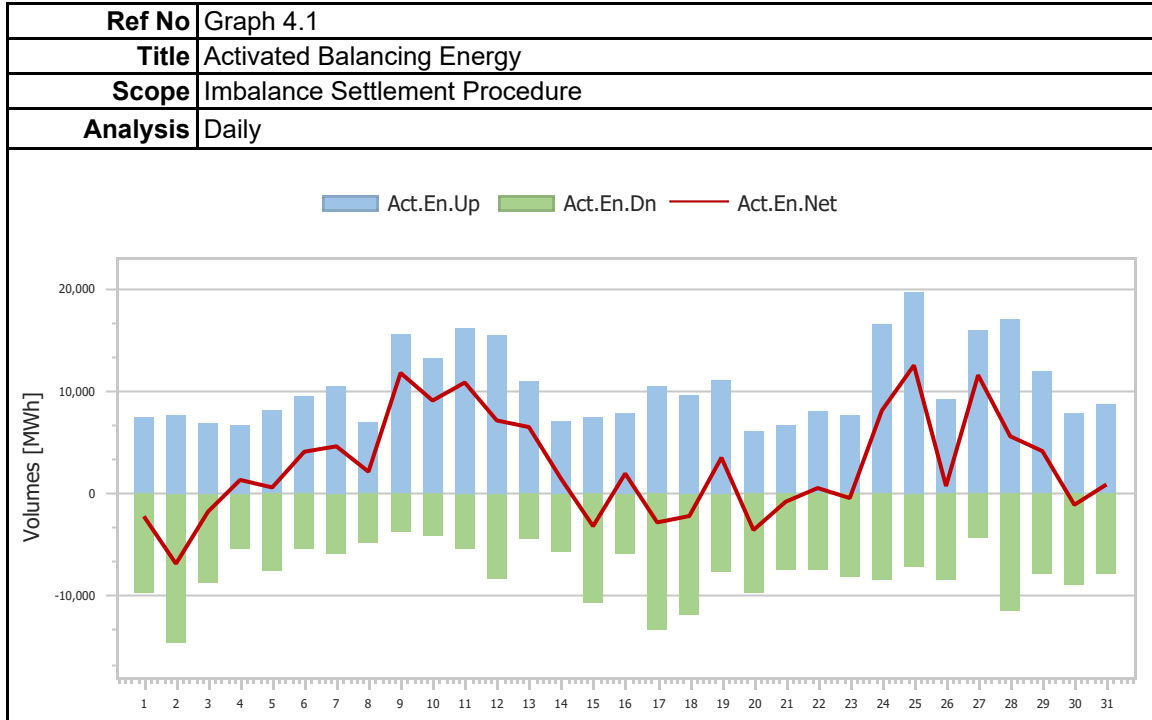


<b>Ref No</b>	Graph 3.12
<b>Title</b>	Upward Capacity Reserves Volumes per Technology
<b>Scope</b>	Integrated Scheduling Process (ISP)
<b>Analysis</b>	Daily

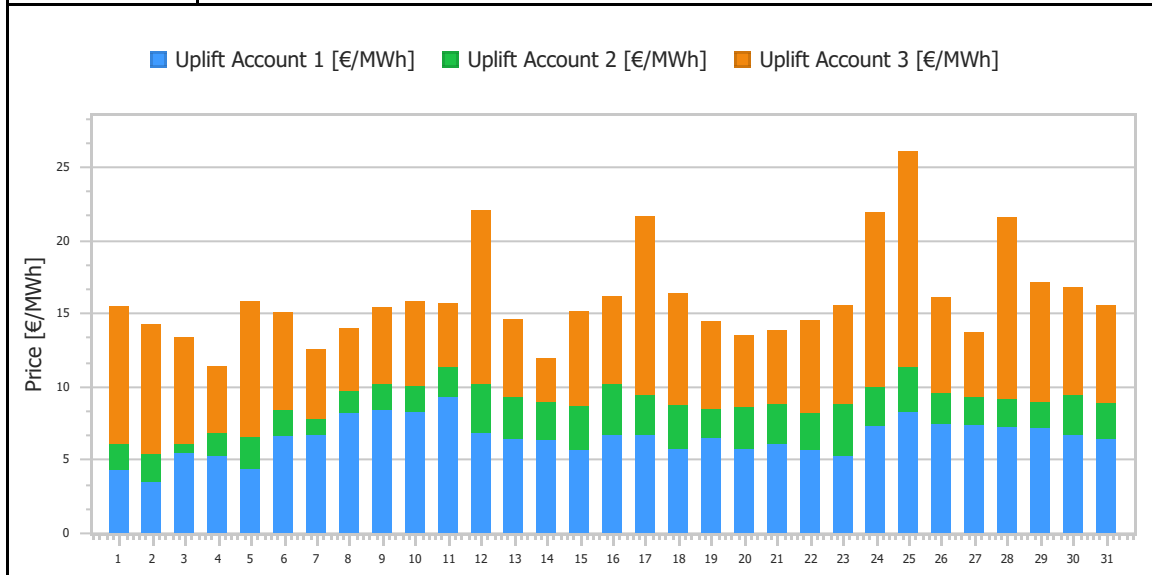




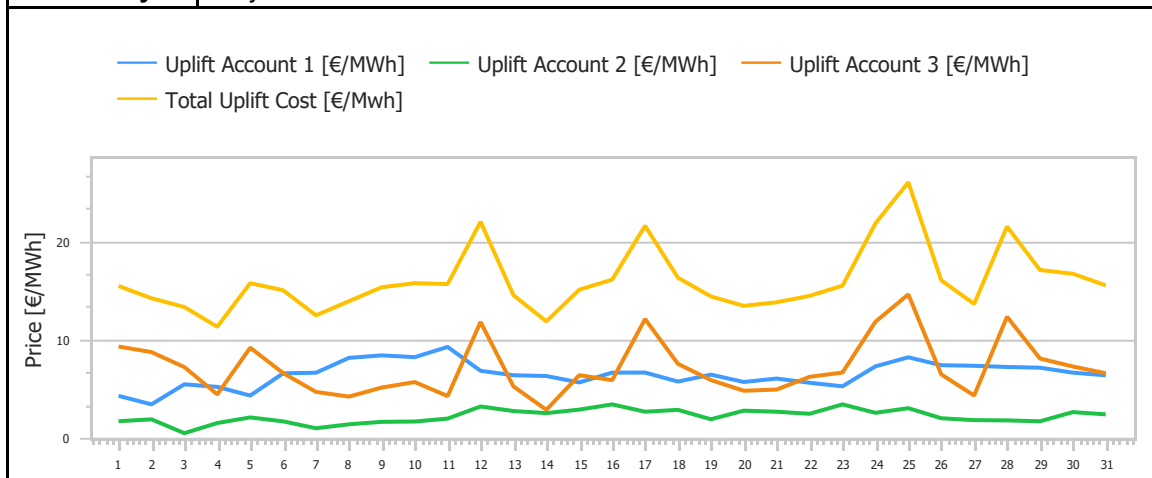
### 4. Imbalance Settlement Procedure



<b>Ref No</b>	Graph 4.3
<b>Title</b>	Uplift Accounts Cost
<b>Scope</b>	Imbalance Settlement Procedure
<b>Analysis</b>	Daily

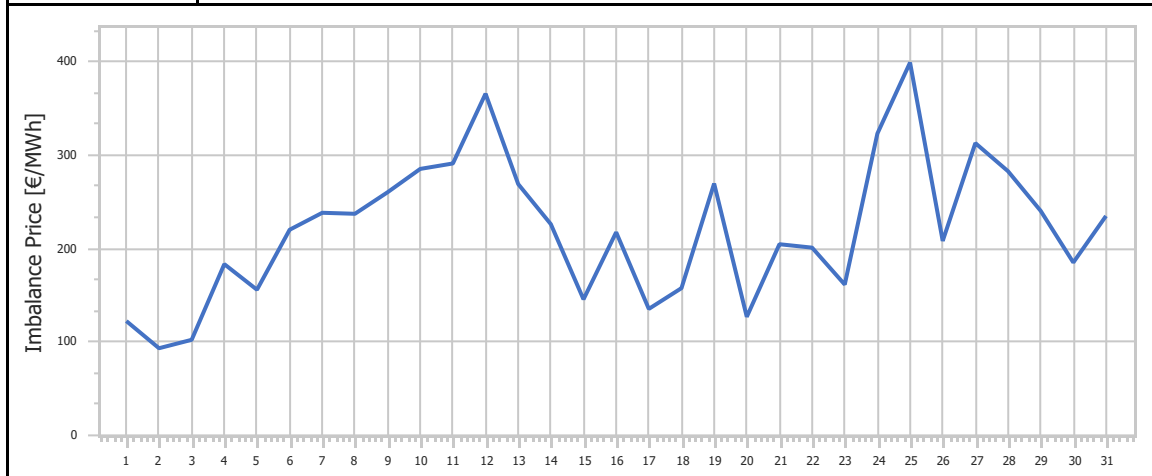


<b>Ref No</b>	Graph 4.4
<b>Title</b>	Uplift Accounts Cost
<b>Scope</b>	Imbalance Settlement Procedure
<b>Analysis</b>	Daily

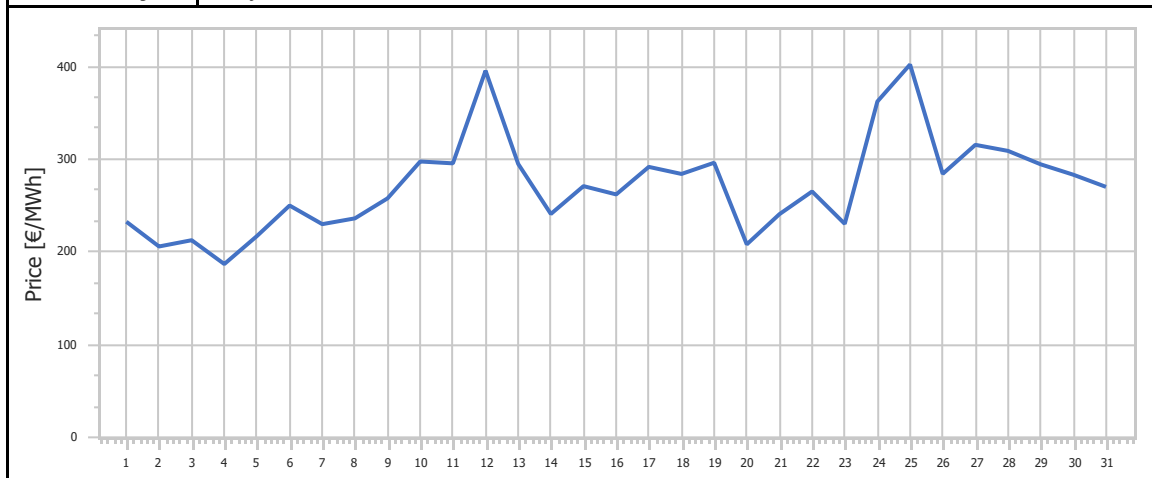




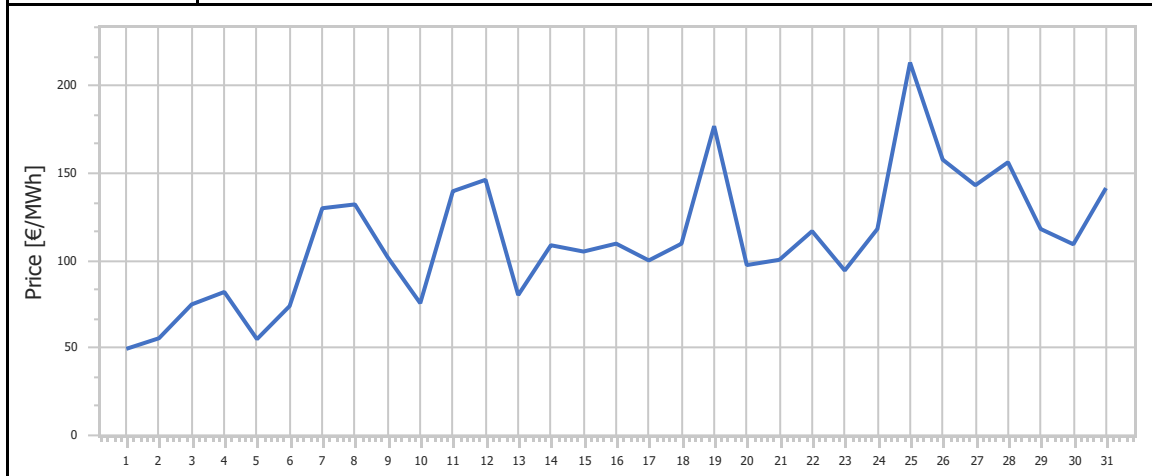
<b>Ref No</b>	Graph 4.5
<b>Title</b>	Imbalance Price
<b>Scope</b>	Imbalance Settlement Procedure
<b>Analysis</b>	Daily



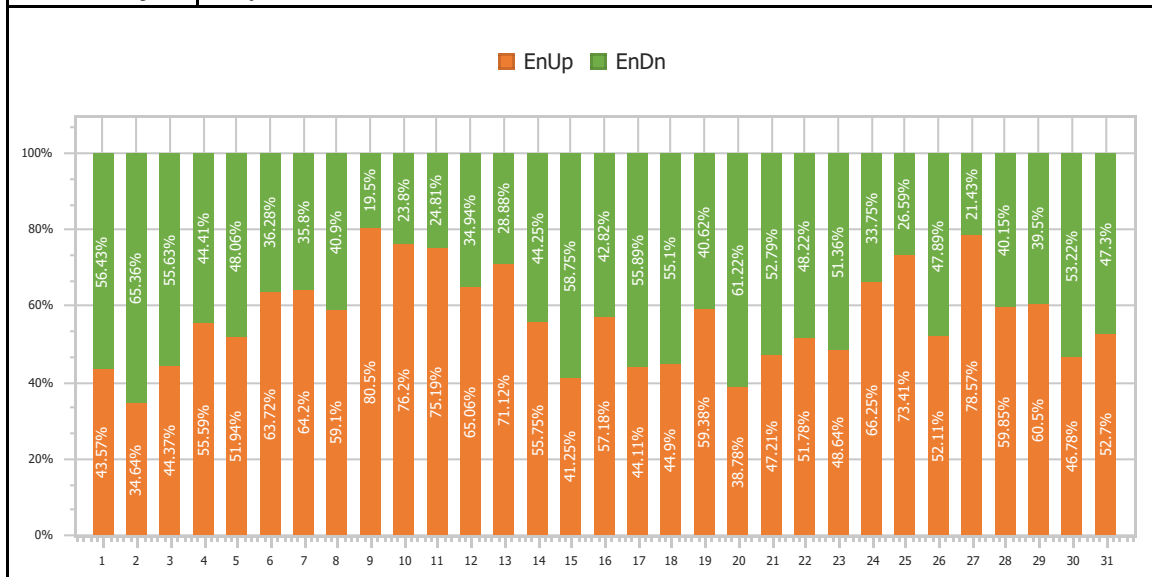
<b>Ref No</b>	Graph 4.6
<b>Title</b>	mFRR Up Price
<b>Scope</b>	Imbalance Settlement Procedure
<b>Analysis</b>	Daily



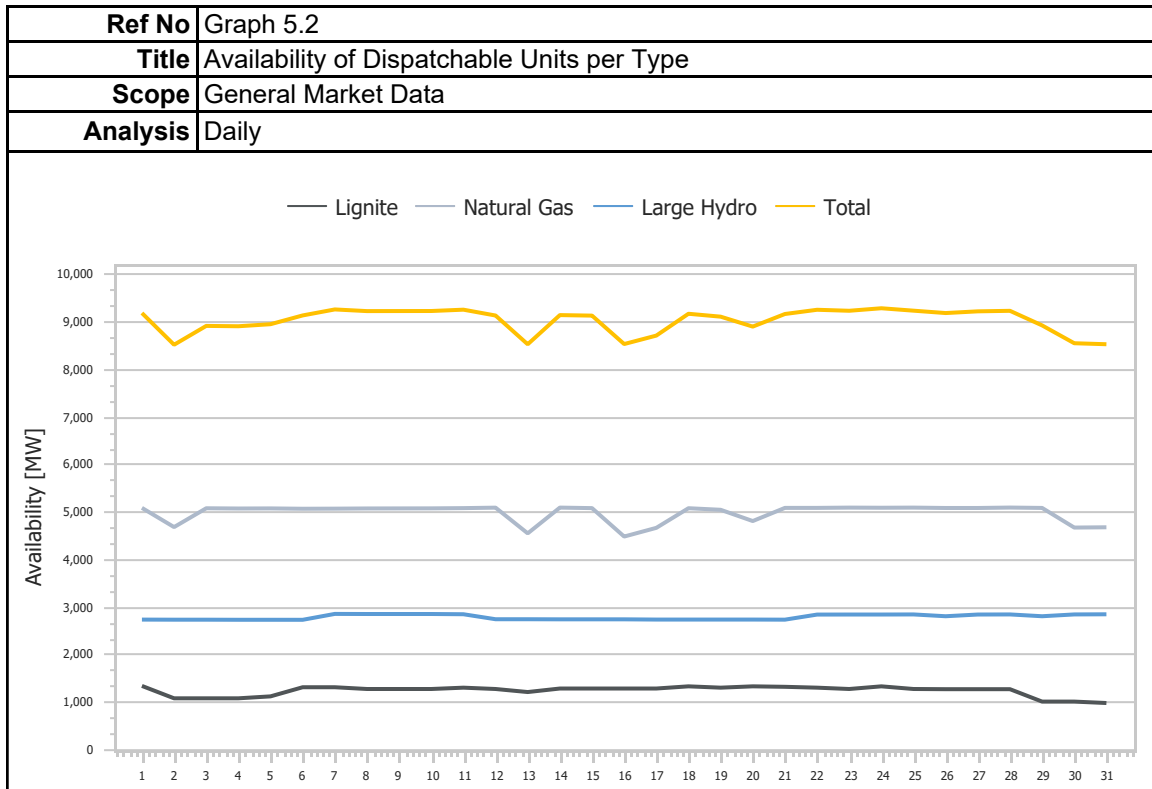
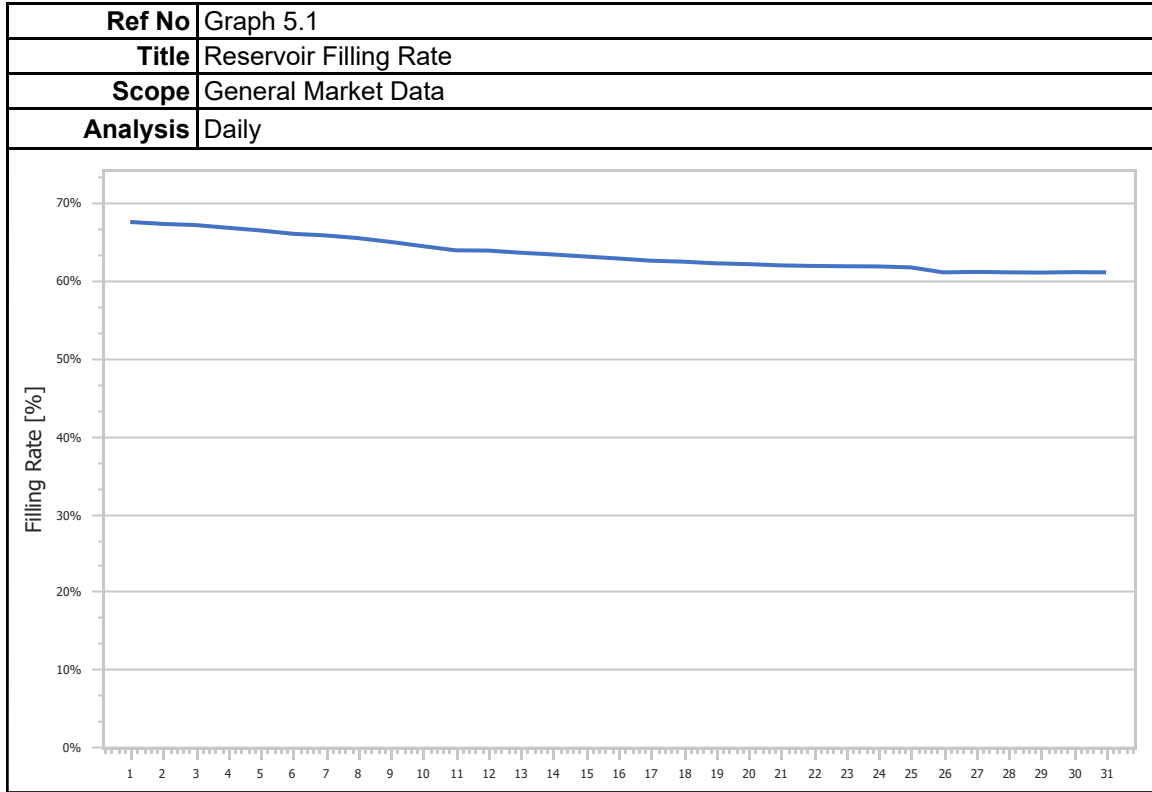
<b>Ref No</b>	Graph 4.7
<b>Title</b>	mFRR Down Price
<b>Scope</b>	Imbalance Settlement Procedure
<b>Analysis</b>	Daily



<b>Ref No</b>	Graph 4.8
<b>Title</b>	Balancing Energy Activation Direction
<b>Scope</b>	Imbalance Settlement Procedure
<b>Analysis</b>	Daily



### 5. General Market Data



## 1. Statistics

<b>Ref No</b>	Table 1.1
<b>Title</b>	Market Shares per Aggregated Classification - SELL
<b>Scope</b>	Day Ahead Market (DAM)
<b>Analysis</b>	Monthly

Classification	Quantity [MWh]	Share [%]	Value [EUR]	Share [%]
Lignite	550,951.738	10.17%	131,506,071.70€	10.39%
Crete Conventional	177,491.640	3.27%	41,007,601.34€	3.24%
Natural Gas	1,575,197.311	29.06%	387,288,389.82€	30.58%
Large Hydro	621,057.288	11.46%	143,350,524.54€	11.32%
RES	1,467,664.952	27.08%	328,601,193.00€	25.95%
Crete Renewables	55,119.960	1.02%	12,809,678.02€	1.01%
Imports	972,581.840	17.94%	221,709,298.36€	17.51%
<b>Total</b>	<b>5,420,064.730</b>	<b>100.00%</b>	<b>1,266,272,756.78€</b>	<b>100.00%</b>

<b>Ref No</b>	Table 1.2
<b>Title</b>	Statistics per Aggregated Classification - SELL
<b>Scope</b>	Day Ahead Market (DAM)
<b>Analysis</b>	Monthly

	MCP [€/MWh]	Total [MWh]	Lignite [MWh]	CR Conv [MWh]	Natural Gas [MWh]	Hydro [MWh]	RES [MWh]	CR RES [MWh]	Imports [MWh]
<b>Total</b>	-	5,420,064.73	550,951.74	177,491.64	1,575,197.31	621,057.29	1,467,664.95	55,119.96	972,581.84
<b>Average</b>	227.30	174,840.80	17,772.64	5,725.54	50,812.82	20,034.11	47,344.03	1,778.06	31,373.61
<b>Min</b>	119.67	133,110.53	4,428.00	4,463.50	21,670.00	6,878.40	21,360.56	969.50	17,170.06
<b>Min day</b>	2	1	4	2	1	31	9	7	25
<b>Max</b>	293.79	208,731.79	28,824.00	7,016.60	81,409.56	30,495.00	81,799.89	2,854.00	40,849.87
<b>Max day</b>	26	25	26	28	27	1	12	16	31
<b>Spread</b>	174.12	75,621.26	24,396.00	2,553.10	59,739.56	23,616.60	60,439.33	1,884.50	23,679.81
<b>Standard Deviation</b>	38.15	18,674.39	7,815.43	571.14	14,009.19	7,908.49	14,576.96	584.01	6,474.38

<b>Ref No</b>	Table 1.3
<b>Title</b>	Market Shares per Aggregated Classification - BUY
<b>Scope</b>	Day Ahead Market (DAM)
<b>Analysis</b>	Monthly

Classification	Quantity [MWh]	Share [%]	Value [EUR]	Share [%]
System Losses	116,973.500	2.16%	27,415,806.45€	2.17%
Crete Load	265,682.190	4.90%	62,349,467.66€	4.92%
HV Load	624,634.377	11.52%	141,315,887.87€	11.16%
MV Load	847,062.461	15.63%	197,980,507.47€	15.63%
LV Load	3,197,580.616	59.00%	753,049,649.24€	59.47%
PUMP	6,745.511	0.12%	1,194,904.16€	0.09%
Exports	361,386.050	6.67%	82,966,503.33€	6.55%
<b>Total</b>	<b>5,420,064.707</b>	<b>100.00%</b>	<b>1,266,272,726.17€</b>	<b>100.00%</b>

<b>Ref No</b>	Table 1.4
<b>Title</b>	Statistics per Aggregated Classification - BUY
<b>Scope</b>	Day Ahead Market (DAM)
<b>Analysis</b>	Monthly

	MCP [€/MWh]	Total [MWh]	Sys Losses [MWh]	CR Load [MWh]	HV [MWh]	MV [MWh]	LV [MWh]	PUMP [MWh]	Exports [MWh]
<b>Total</b>	-	5,420,064.71	116,973.50	265,682.19	624,634.38	847,062.46	3,197,580.62	6,745.51	361,386.05
<b>Average</b>	227.30	174,840.80	3,773.34	8,570.39	20,149.50	27,324.60	103,147.76	355.03	11,657.61
<b>Min</b>	119.67	133,110.55	2,729.50	6,395.70	19,093.96	16,276.55	76,410.28	47.07	5,199.09
<b>Min day</b>	2	1	2	9	28	1	1	28	31
<b>Max</b>	293.79	208,731.76	5,144.00	10,584.00	22,009.62	32,901.58	120,630.27	940.00	25,274.50
<b>Max day</b>	26	25	13	28	1	25	25	21	6
<b>Spread</b>	174.12	75,621.21	2,414.50	4,188.30	2,915.65	16,625.03	44,219.99	892.93	20,075.41
<b>Standard Deviation</b>	38.15	18,674.37	611.85	1,006.43	872.57	4,820.04	12,617.37	212.78	5,103.43

## 2. Market Shares

<b>Ref No</b>	Table 2.1.1			
<b>Title</b>	Market Shares - Upward Capacity Reserves Volumes per Type			
<b>Scope</b>	Balancing Market (BM)			
<b>Analysis</b>	Monthly			
Type	Quantity [MW]	Share [%]	Value [EUR]	Share [%]
aFRR	1,483,602.450	58.59%	3,948,615.06€	60.31%
FCR	125,540.700	4.96%	305,028.01€	4.66%
mFRR	923,153.680	36.46%	2,293,347.73€	35.03%
<b>Total</b>	<b>2,532,296.830</b>	<b>100.00%</b>	<b>6,546,990.80€</b>	<b>100.00%</b>

<b>Ref No</b>	Table 2.1.2			
<b>Title</b>	Market Shares - Downward Capacity Reserves per Type			
<b>Scope</b>	Balancing Market(BM)			
<b>Analysis</b>	Monthly			
Type	Quantity [MW]	Share [%]	Value [EUR]	Share [%]
aFRR	345,602.910	38.40%	1,846,523.78€	45.14%
FCR	132,064.250	14.67%	661,083.04€	16.16%
mFRR	422,323.990	46.93%	1,582,774.12€	38.70%
<b>Total</b>	<b>899,991.150</b>	<b>100.00%</b>	<b>4,090,380.94€</b>	<b>100.00%</b>

<b>Ref No</b>	Table 2.1.3				
<b>Title</b>	Market Shares - Upward Activated Balancing Energy per Type				
<b>Scope</b>	Balancing Market (BM)				
<b>Analysis</b>	Monthly				
Type	Quantity [MWh]	Share [%]	Value [EUR]	Share [%]	
aFRR	105,727.810	32.63%	33,466,948.79€	32.73%	
mFRR	218,314.040	67.37%	68,789,522.12€	67.27%	
<b>Total</b>	<b>324,041.860</b>	<b>100.00%</b>	<b>102,256,470.91€</b>	<b>100.00%</b>	

<b>Ref No</b>	Table 2.1.4				
<b>Title</b>	Market Shares - Downward Activated Balancing Energy per Type				
<b>Scope</b>	Balancing Market (BM)				
<b>Analysis</b>	Monthly				
Type	Quantity [MWh]	Share [%]	Value [EUR]	Share [%]	
aFRR	95,646.750	39.92%	8,193,081.47€	33.62%	
mFRR	143,938.500	60.08%	16,178,105.63€	66.38%	
<b>Total</b>	<b>239,585.250</b>	<b>100.00%</b>	<b>24,371,187.09€</b>	<b>100.00%</b>	

### 3. Market Overview

<b>Ref No</b>	Table 3.1
<b>Title</b>	Total Transactions Quantity per Market
<b>Scope</b>	DAM, IDM, Balancing Energy Market
<b>Analysis</b>	Monthly

Market	Quantity [MWh]	Share [%]
DAM	5,420,064.73	96.09%
IDMA1	65,509.99	1.16%
IDMA2	38,357.18	0.68%
IDMA3	32,187.14	0.57%
IDM (Total)	136,054.32	2.41%
Balancing Energy (Up)	324,041.86	5.74%
Balancing Energy (Dn)	239,585.25	4.25%
Balancing Energy (Total)	84,456.61	1.50%
<b>Total</b>	<b>5,640,575.66</b>	<b>100.00%</b>

<b>Ref No</b>	Table 3.2
<b>Title</b>	Total Transactions Value per Market
<b>Scope</b>	DAM, IDM, Balancing Energy Market
<b>Analysis</b>	Monthly

Market	Value [EUR]	Share [%]
DAM	1,266,272,756.78€	91.25%
IDMA1	15,837,954.47€	1.14%
IDMA2	8,986,214.75€	0.65%
IDMA3	8,105,656.09€	0.58%
IDM (Total)	32,929,825.31€	2.37%
Balancing Capacity (Up)	6,546,990.80€	0.47%
Balancing Capacity (Dn)	4,090,380.94€	0.29%
Balancing Capacity (Total)	10,637,371.74€	0.77%
Balancing Energy (Up)	102,256,470.91€	7.37%
Balancing Energy (Dn)	24,371,187.09€	1.76%
Balancing Energy (Total)	77,885,283.82€	5.61%
Balancing Market (Total)	88,522,655.56€	6.38%
<b>Total</b>	<b>1,387,725,237.65€</b>	<b>100.00%</b>