

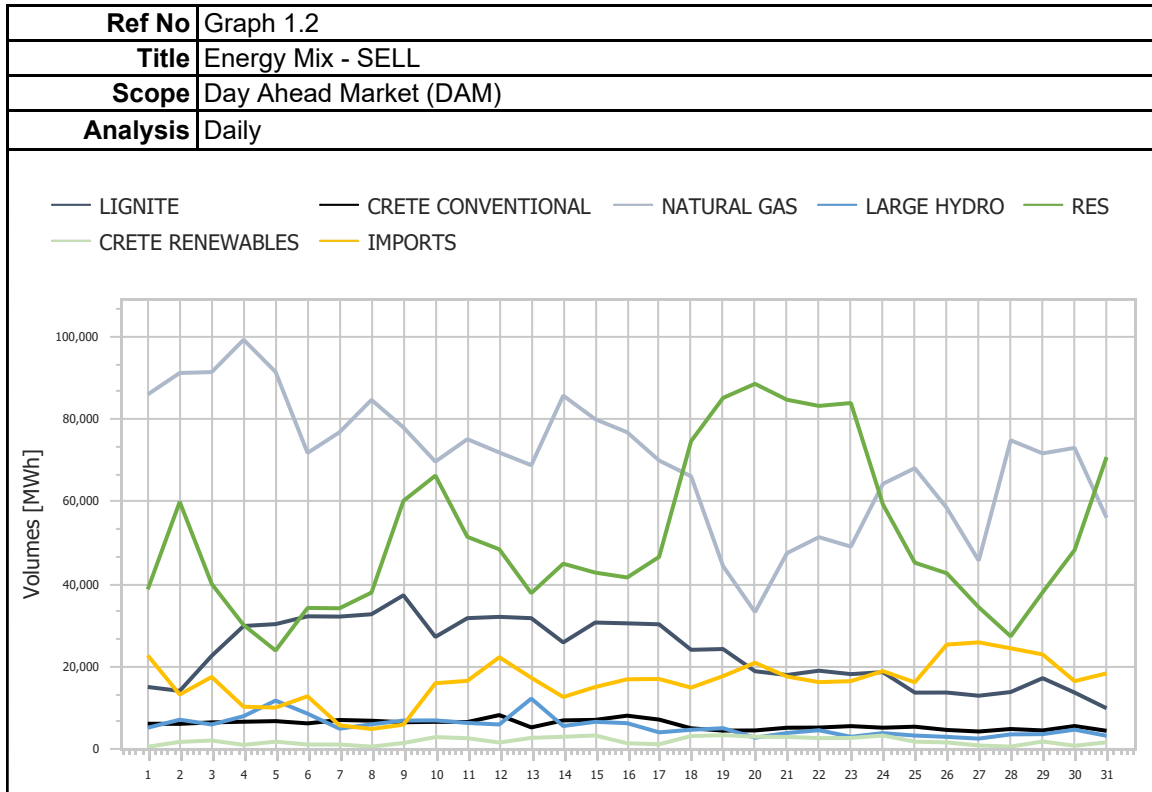
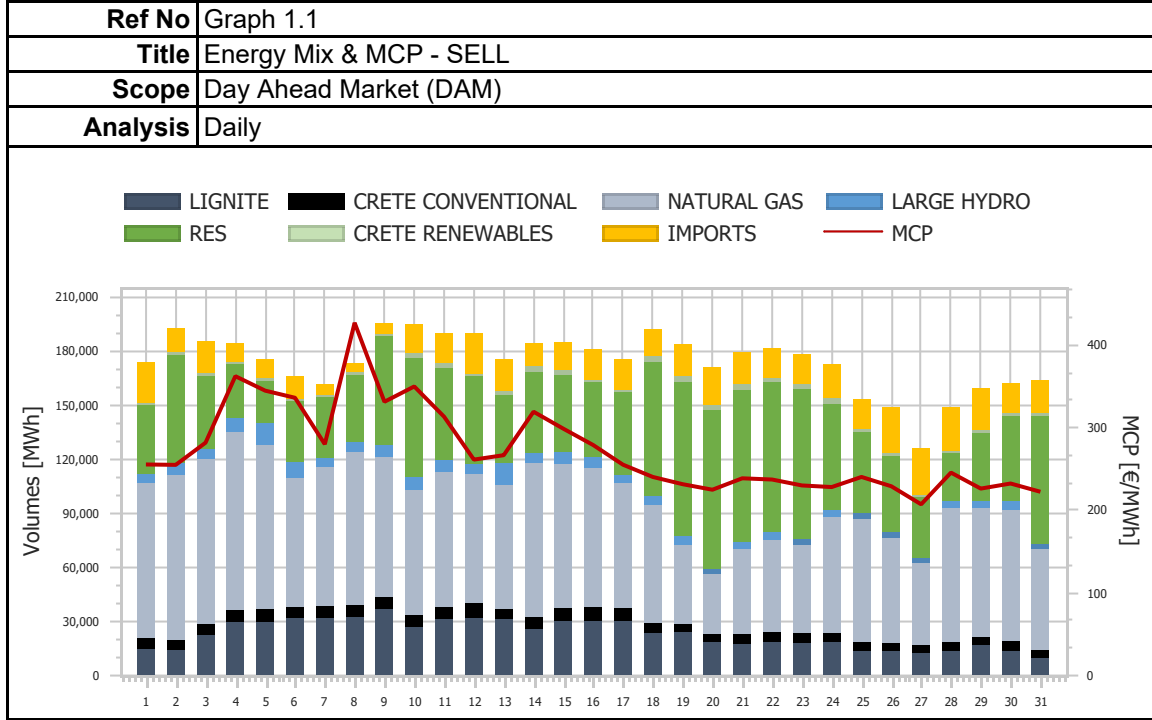
Market Monitoring Report

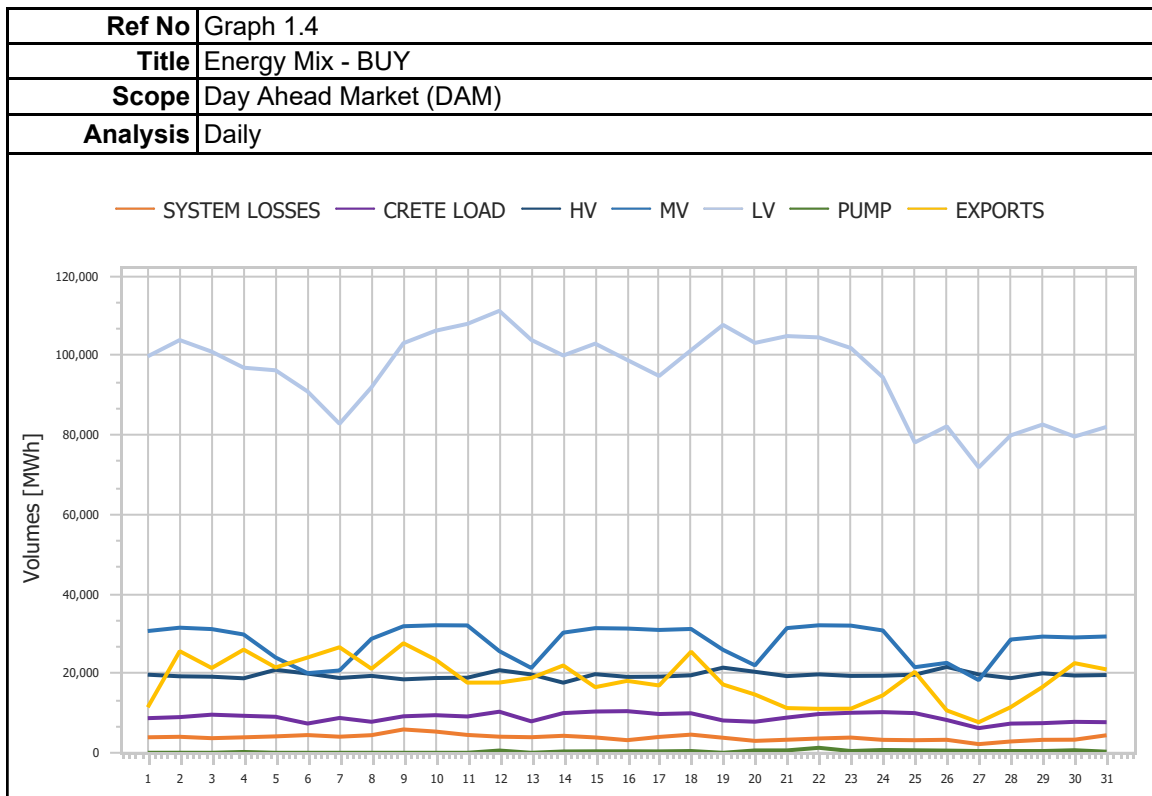
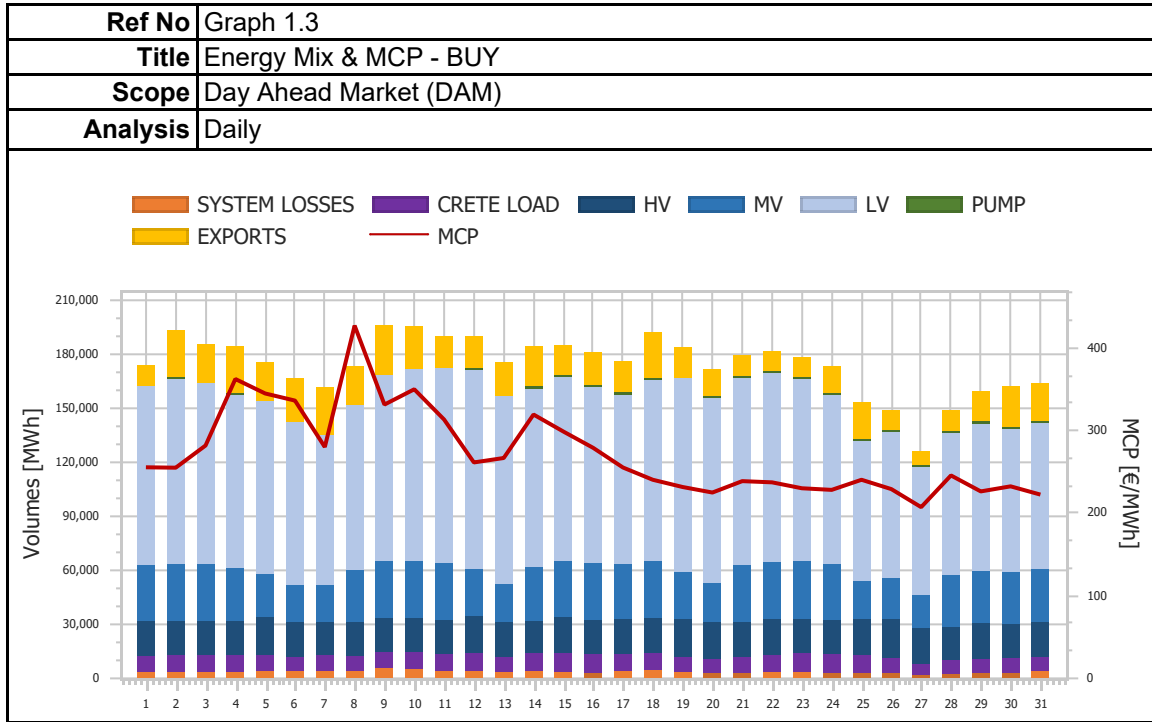
Monthly - Public - 2

03-2022

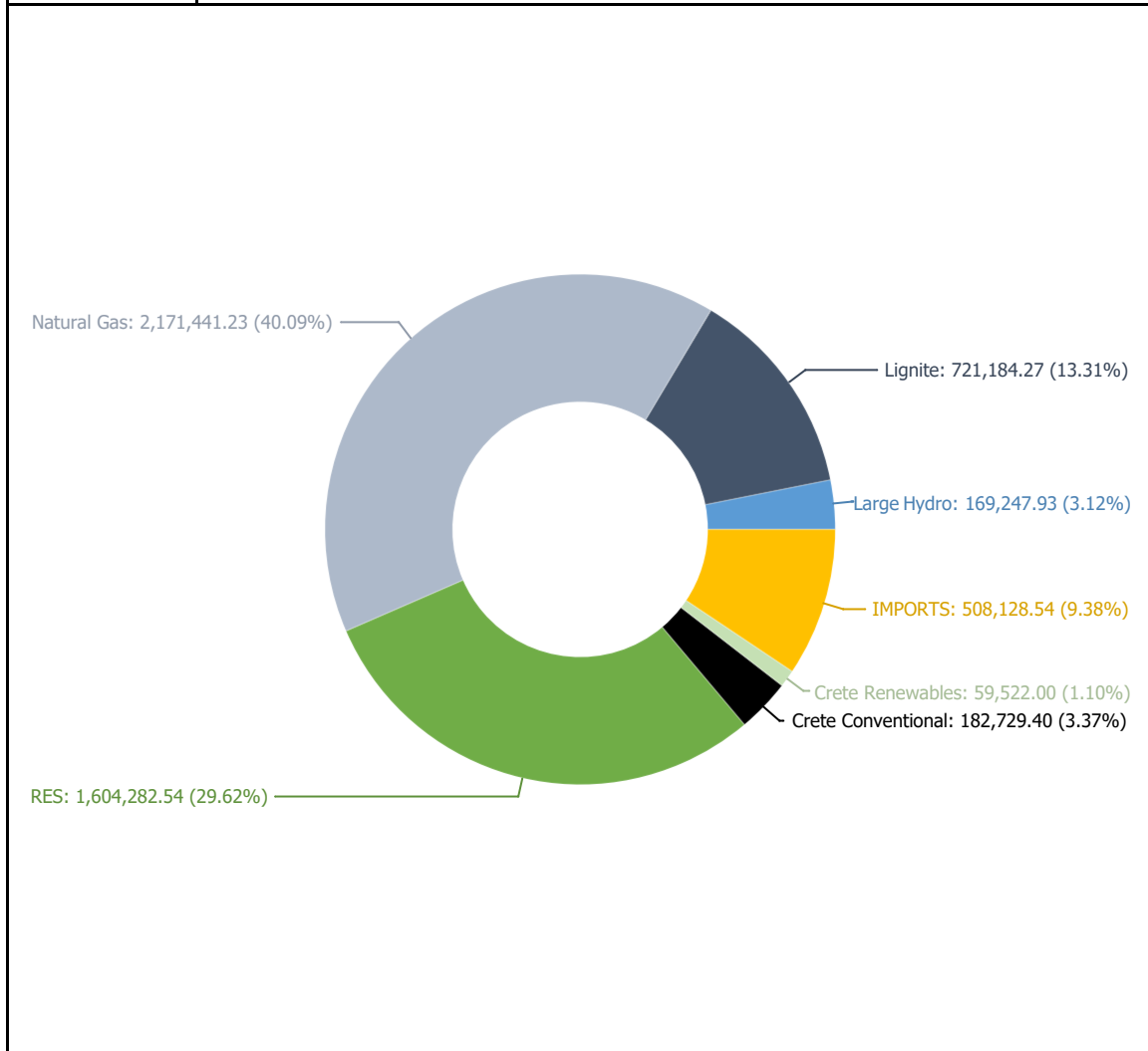


1. Day Ahead Market (DAM)

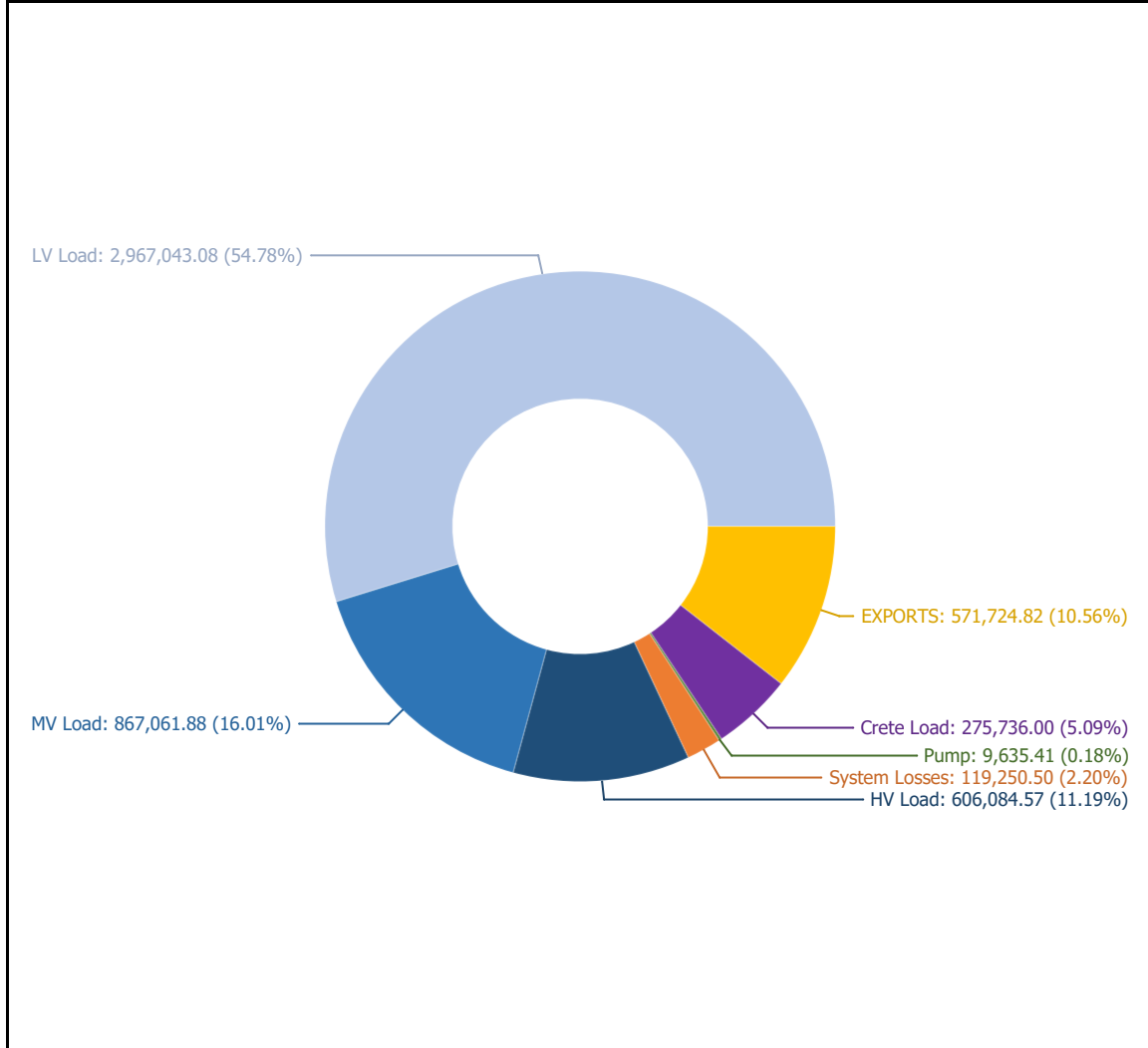


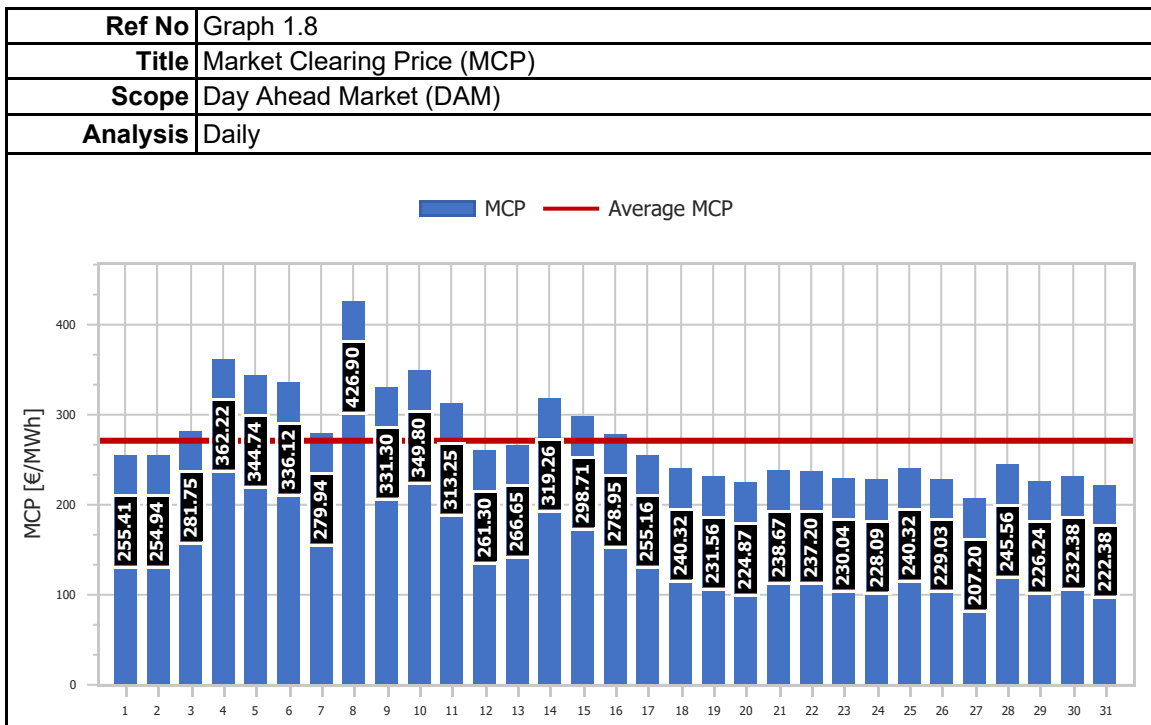
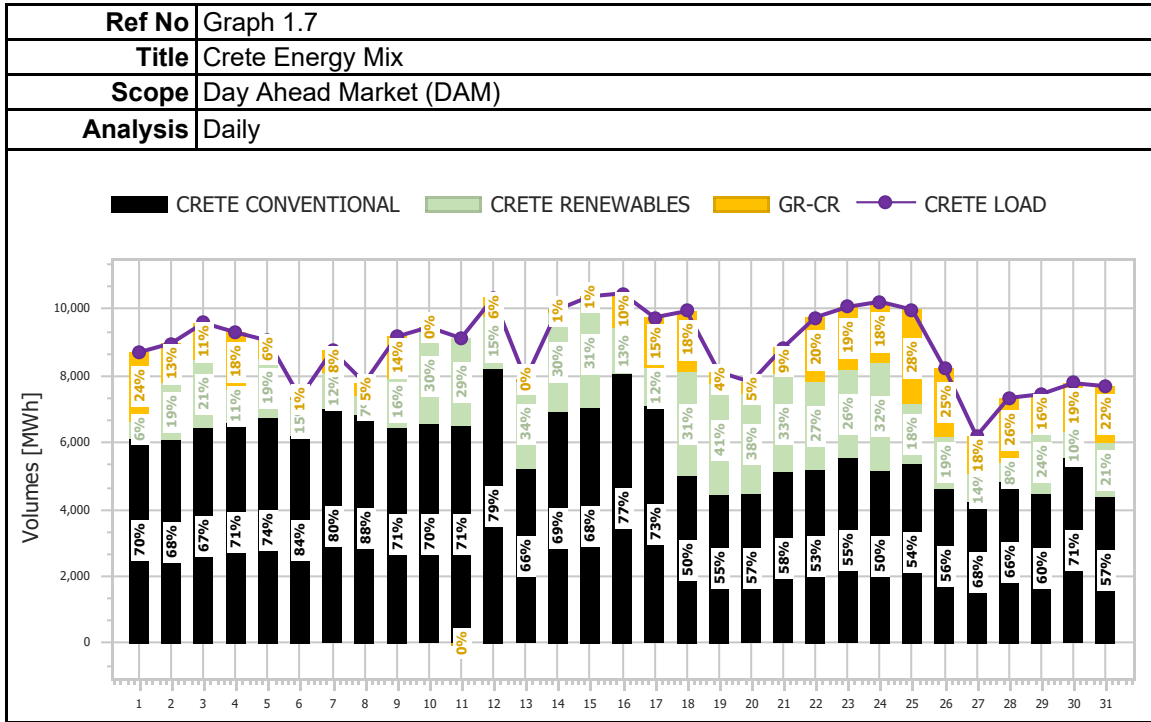


| | |
|-----------------|------------------------|
| Ref No | Graph 1.5 |
| Title | Energy Mix - SELL |
| Scope | Day Ahead Market (DAM) |
| Analysis | Daily |

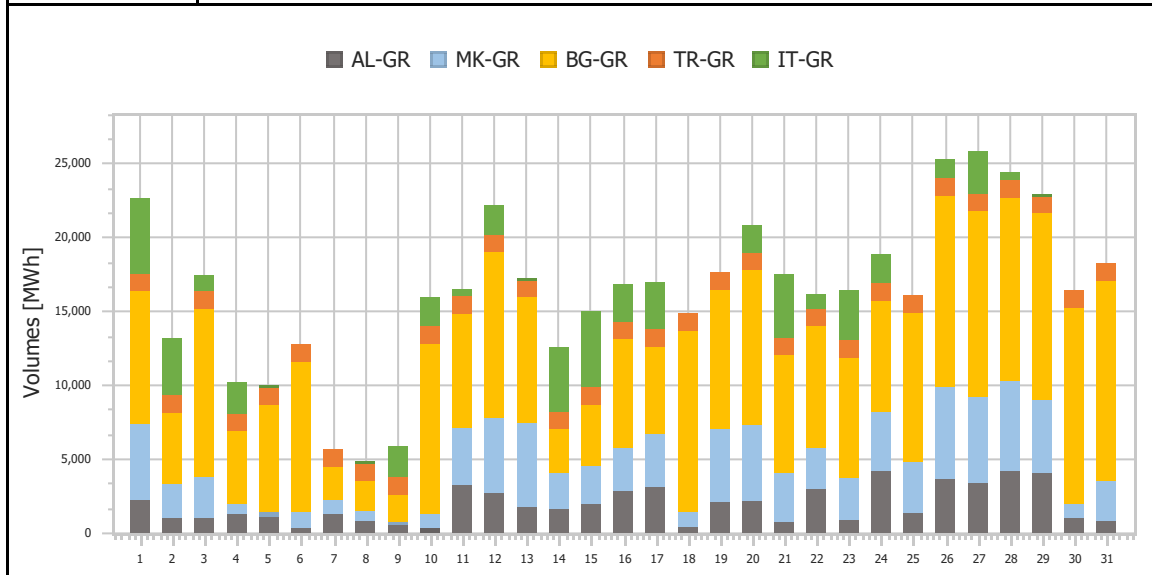


| | |
|-----------------|------------------------|
| Ref No | Graph 1.6 |
| Title | Energy Mix - BUY |
| Scope | Day Ahead Market (DAM) |
| Analysis | Daily |

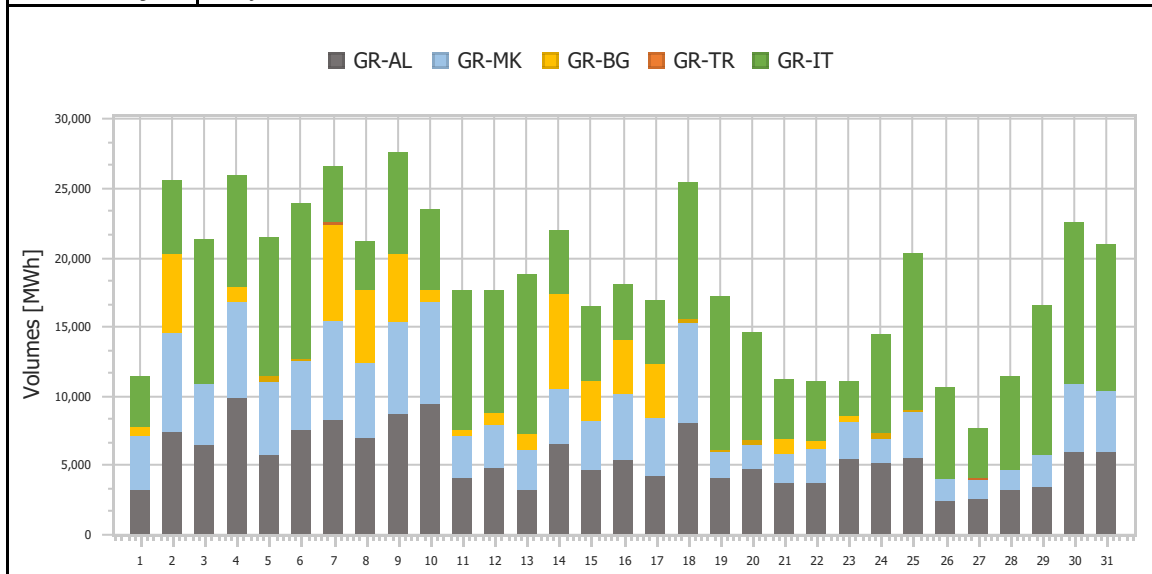




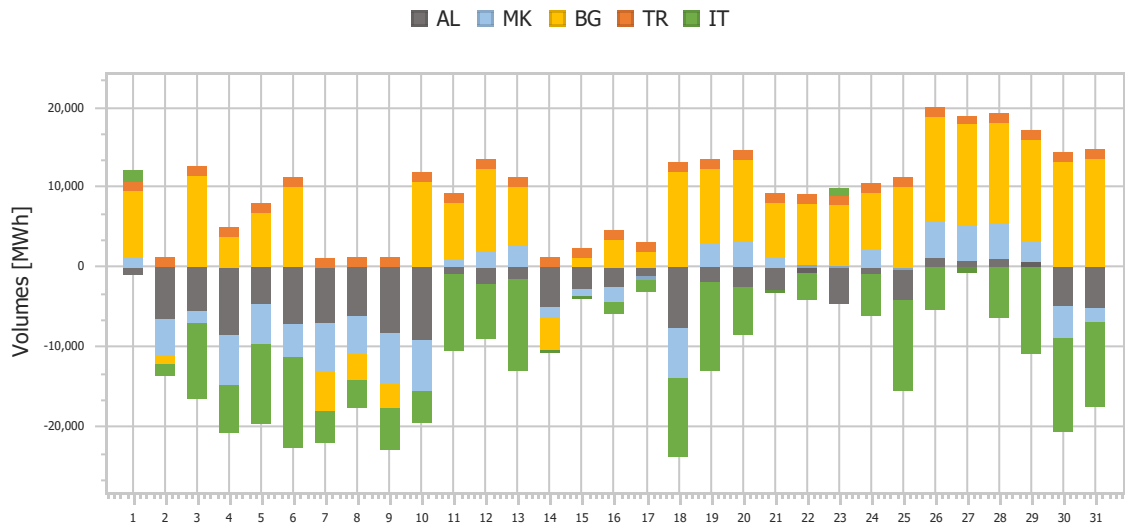
| | |
|-----------------|------------------------|
| Ref No | Graph 1.9 |
| Title | Imports per Border |
| Scope | Day Ahead Market (DAM) |
| Analysis | Daily |



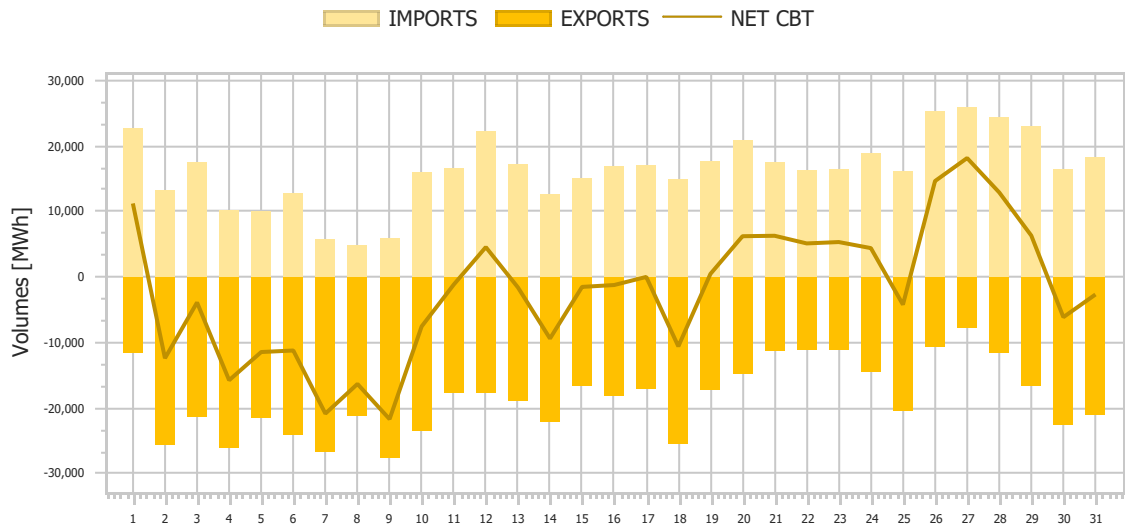
| | |
|-----------------|------------------------|
| Ref No | Graph 1.10 |
| Title | Exports per Border |
| Scope | Day Ahead Market (DAM) |
| Analysis | Daily |



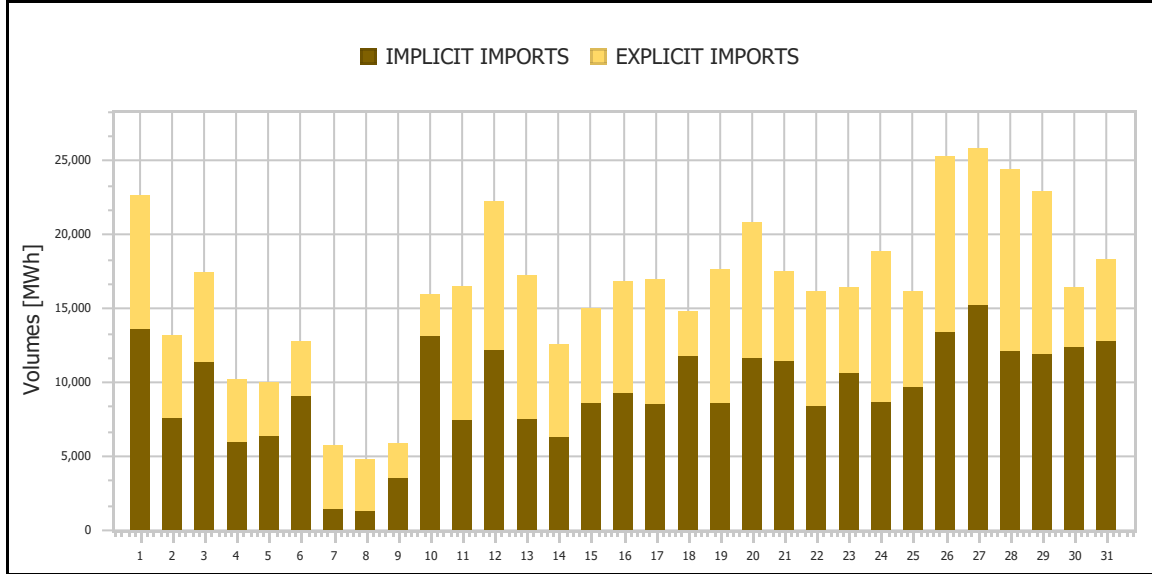
| | |
|-----------------|------------------------|
| Ref No | Graph 1.11 |
| Title | Net Imports per Border |
| Scope | Day Ahead Market (DAM) |
| Analysis | Daily |



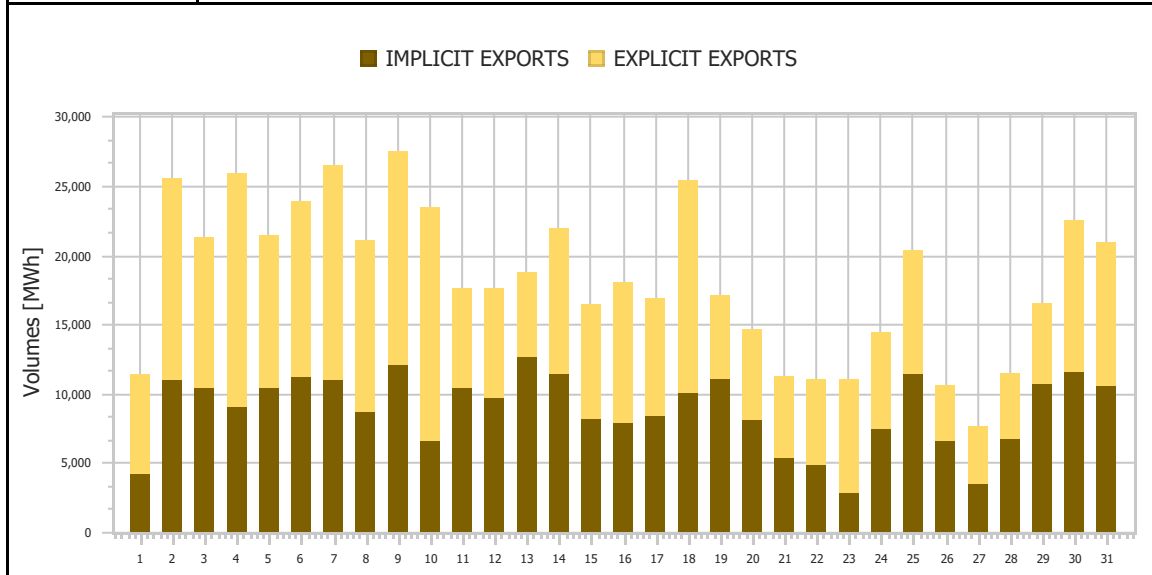
| | |
|-----------------|-------------------------|
| Ref No | Graph 1.12 |
| Title | Total Imports & Exports |
| Scope | Day Ahead Market (DAM) |
| Analysis | Daily |

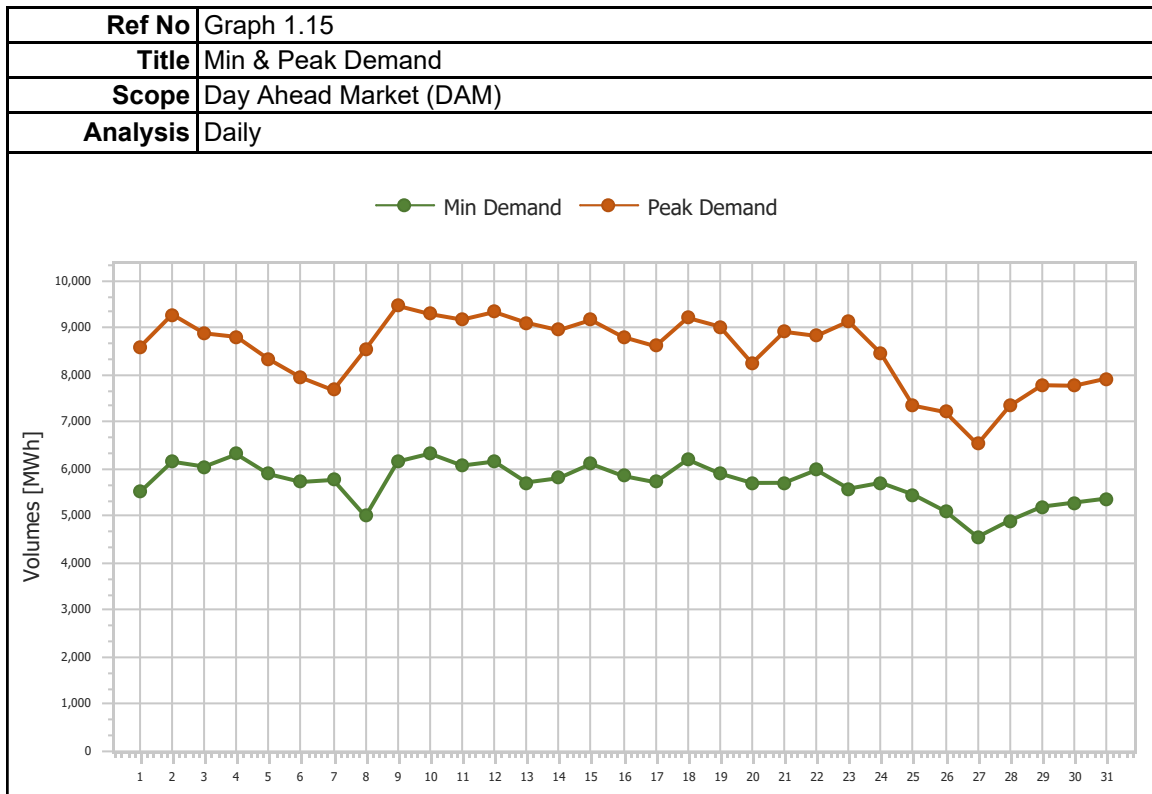


| | |
|-----------------|-----------------------------|
| Ref No | Graph 1.13 |
| Title | Imports (Implicit/Explicit) |
| Scope | Day Ahead Market (DAM) |
| Analysis | Daily |

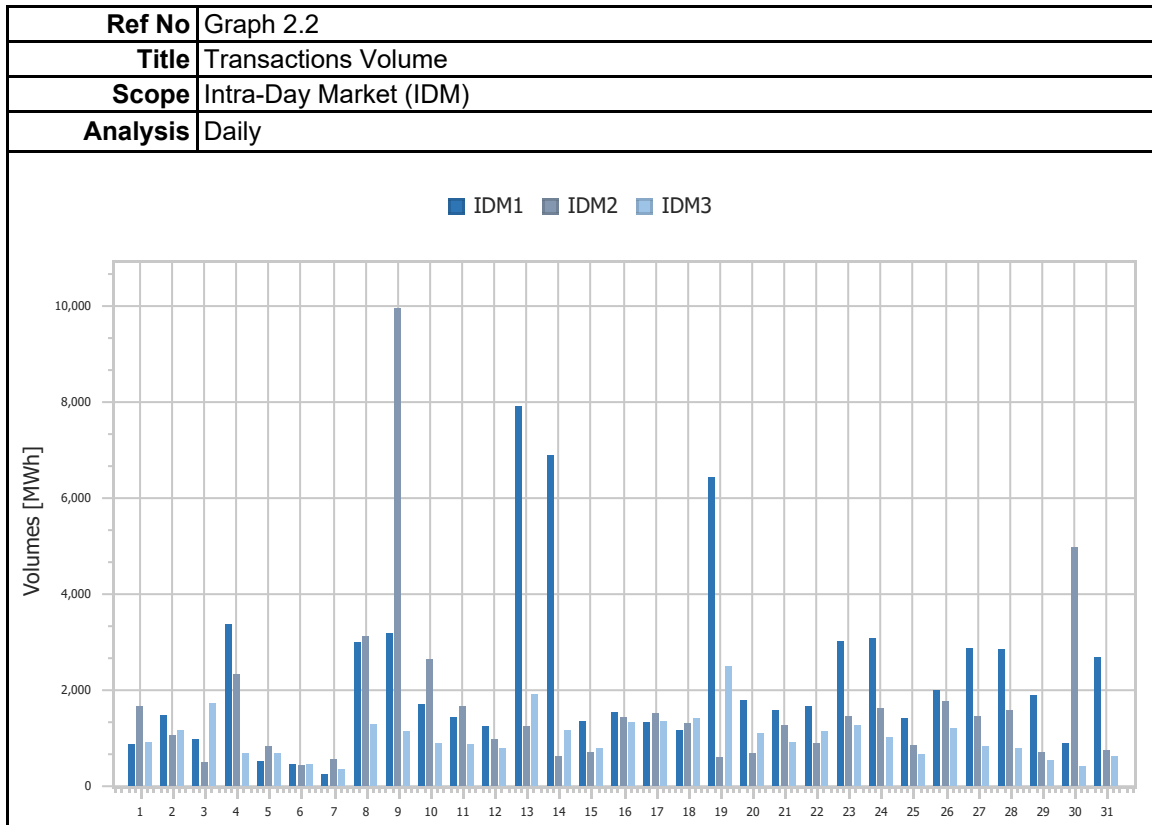
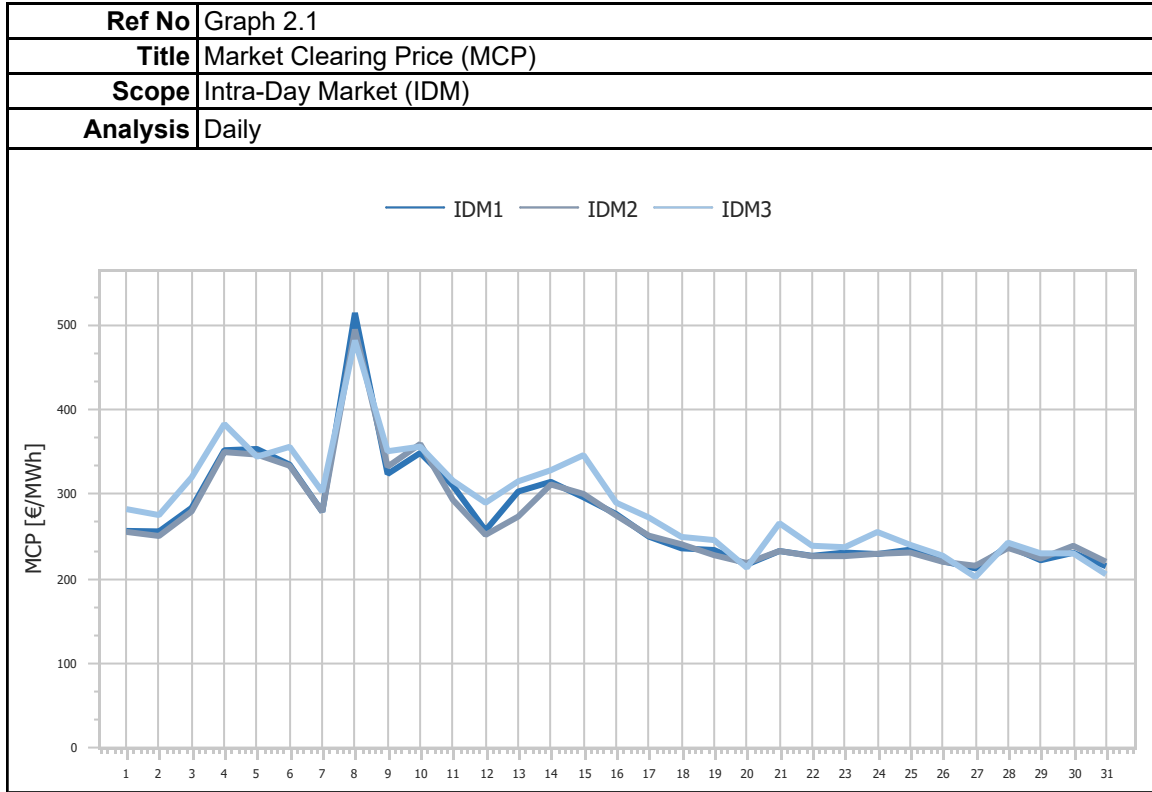


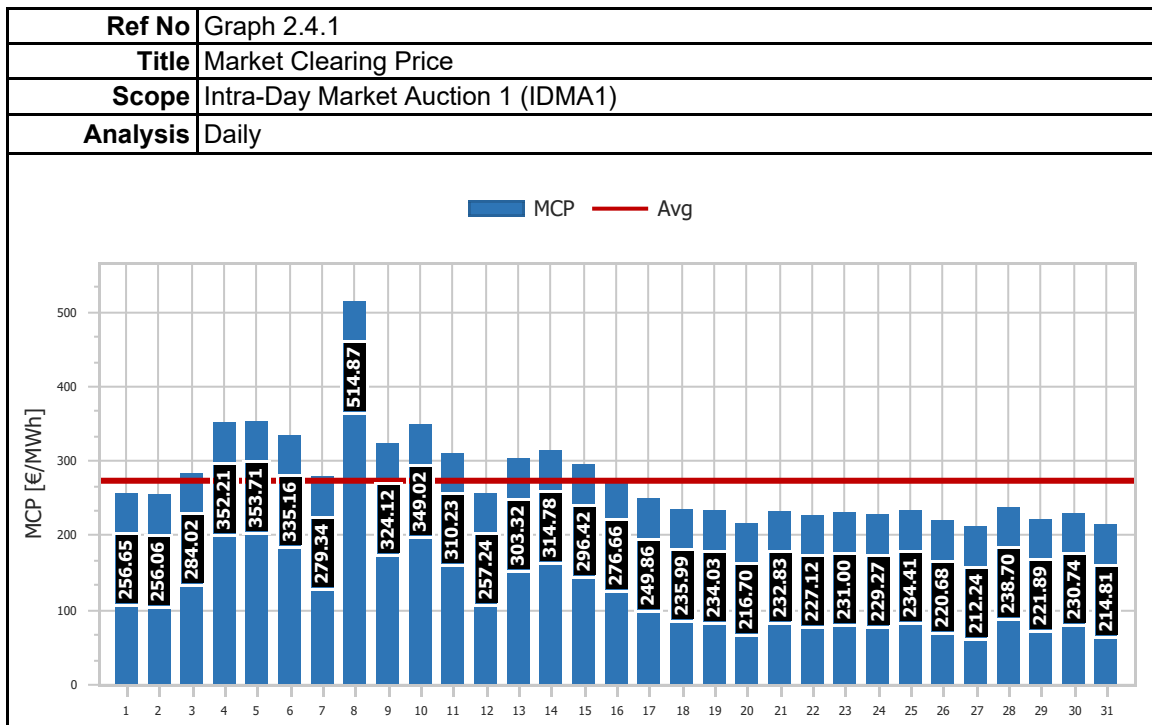
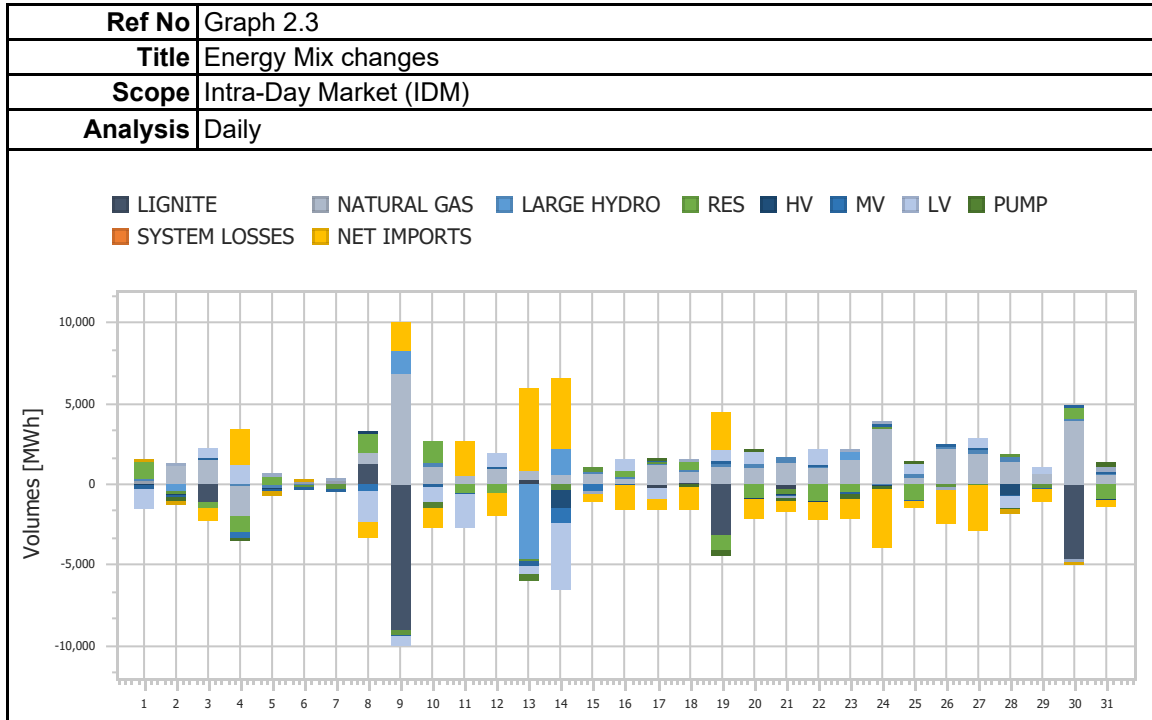
| | |
|-----------------|-----------------------------|
| Ref No | Graph 1.14 |
| Title | Exports (Implicit/Explicit) |
| Scope | Day Ahead Market (DAM) |
| Analysis | Monthly |



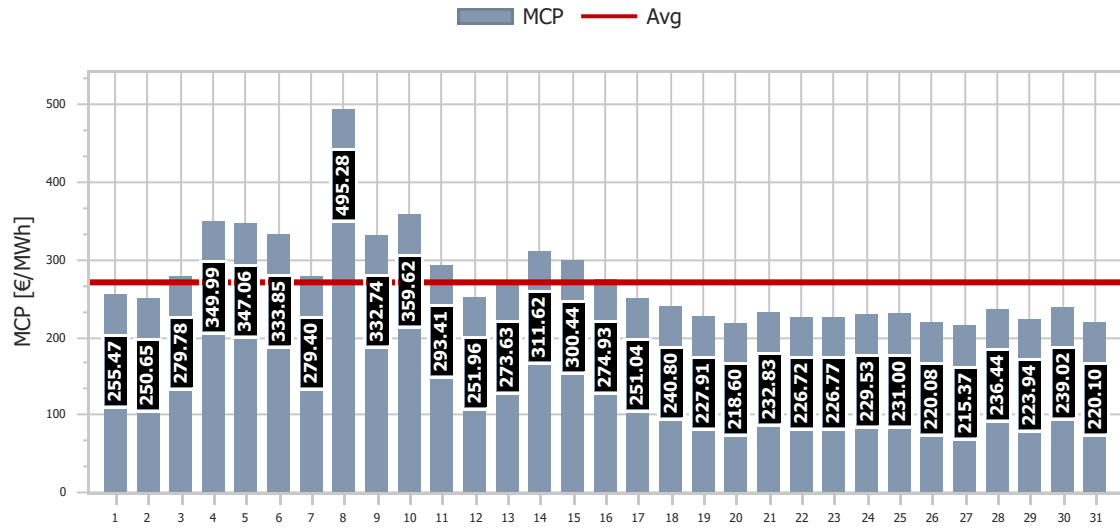


2. Intra-Day Market (IDM)

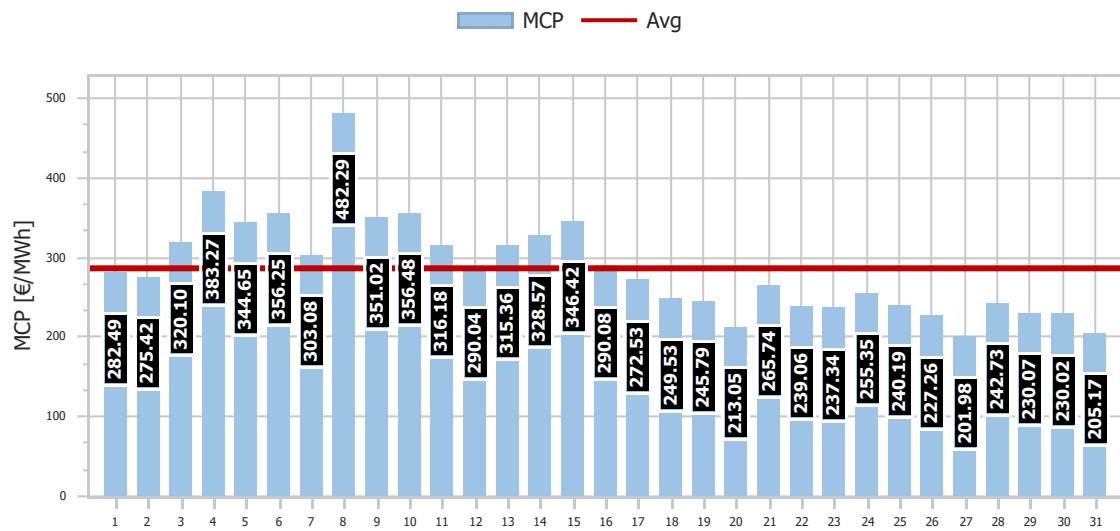




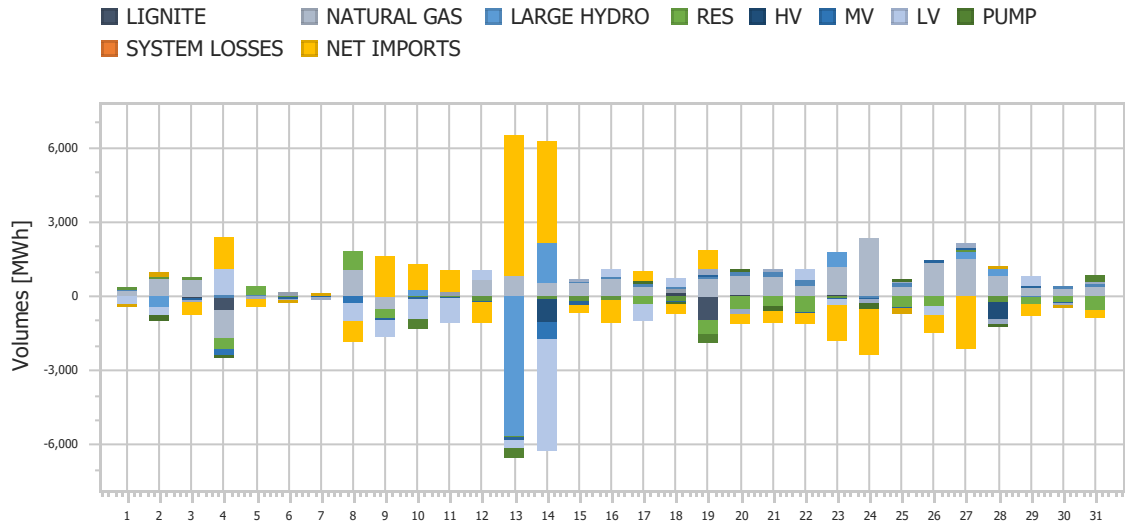
| | |
|-----------------|------------------------------------|
| Ref No | Graph 2.4.2 |
| Title | Market Clearing Price |
| Scope | Intra-Day Market Auction 2 (IDMA2) |
| Analysis | Daily |



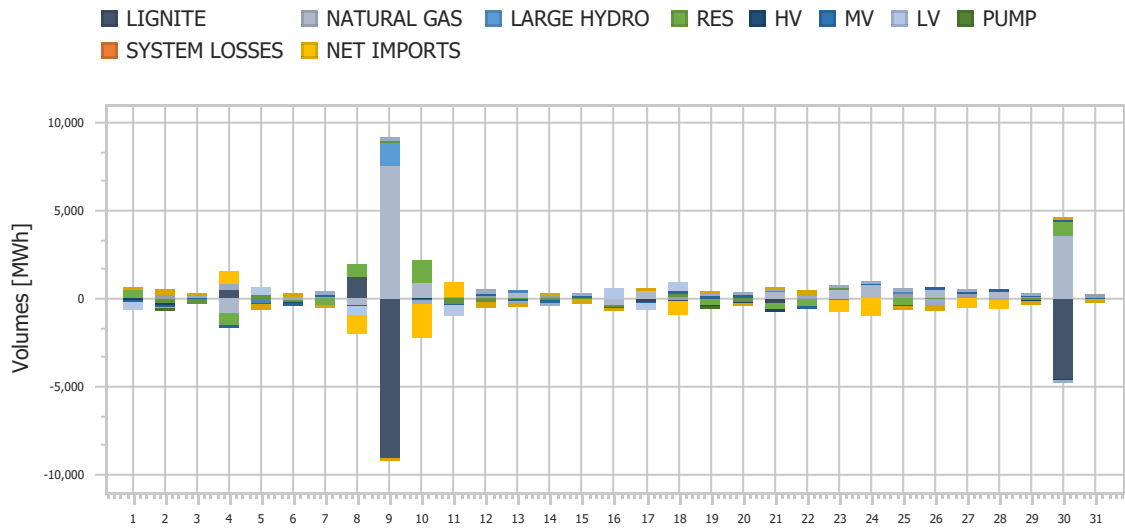
| | |
|-----------------|------------------------------------|
| Ref No | Graph 2.4.3 |
| Title | Market Clearing Price |
| Scope | Intra-Day Market Auction 3 (IDMA3) |
| Analysis | Daily |



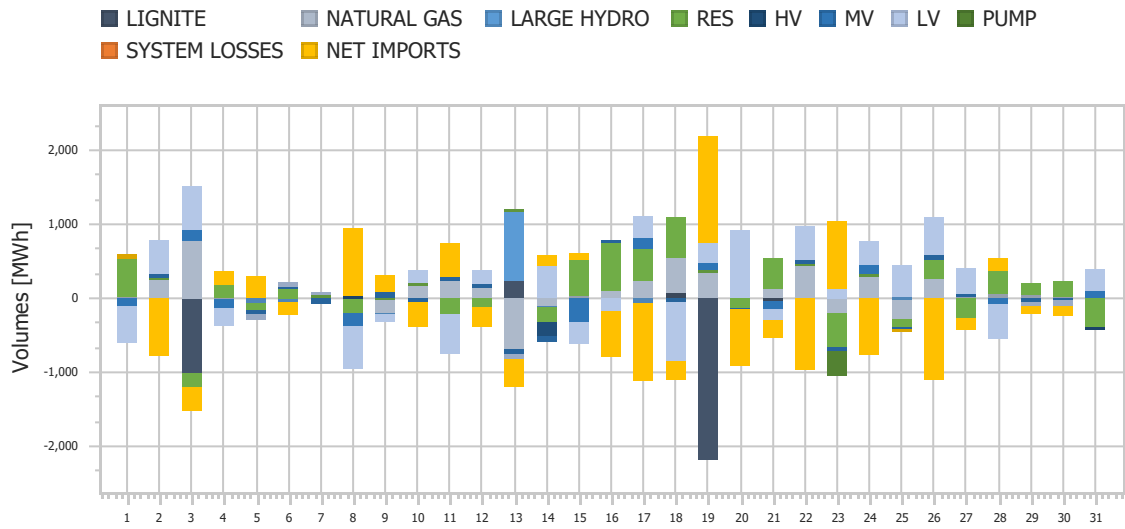
| | |
|-----------------|------------------------------------|
| Ref No | Graph 2.5.1 |
| Title | IDM Energy Mix Changes |
| Scope | Intra-Day Market Auction 1 (IDMA1) |
| Analysis | Daily |



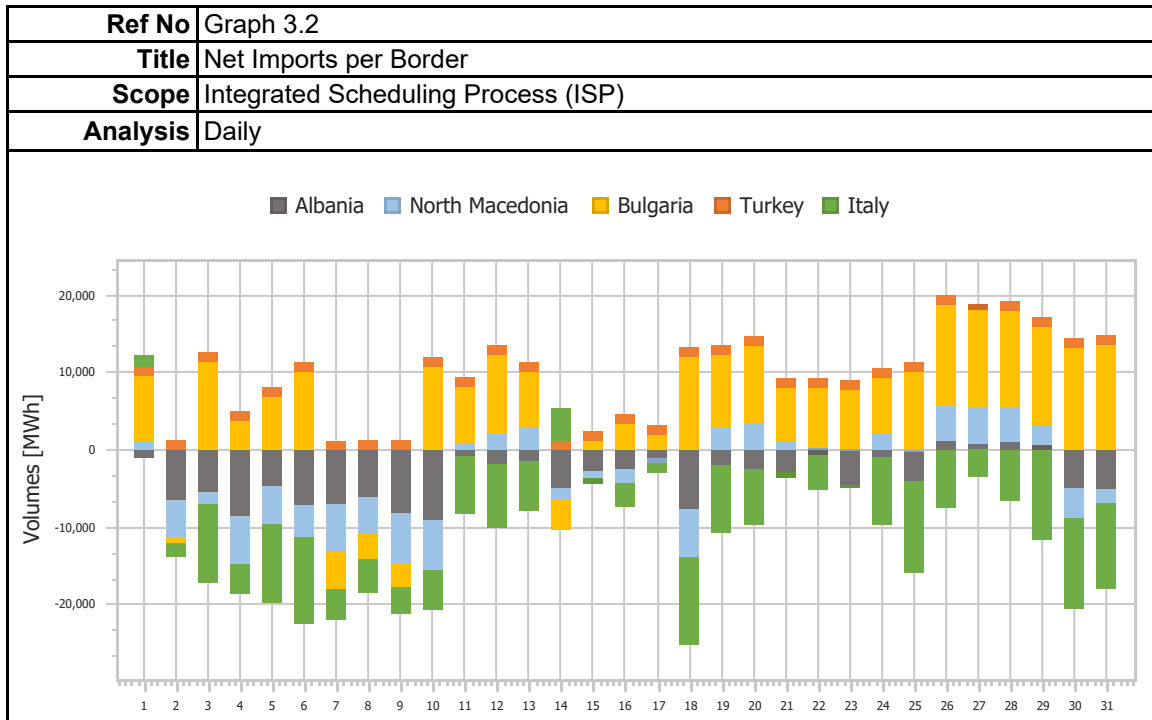
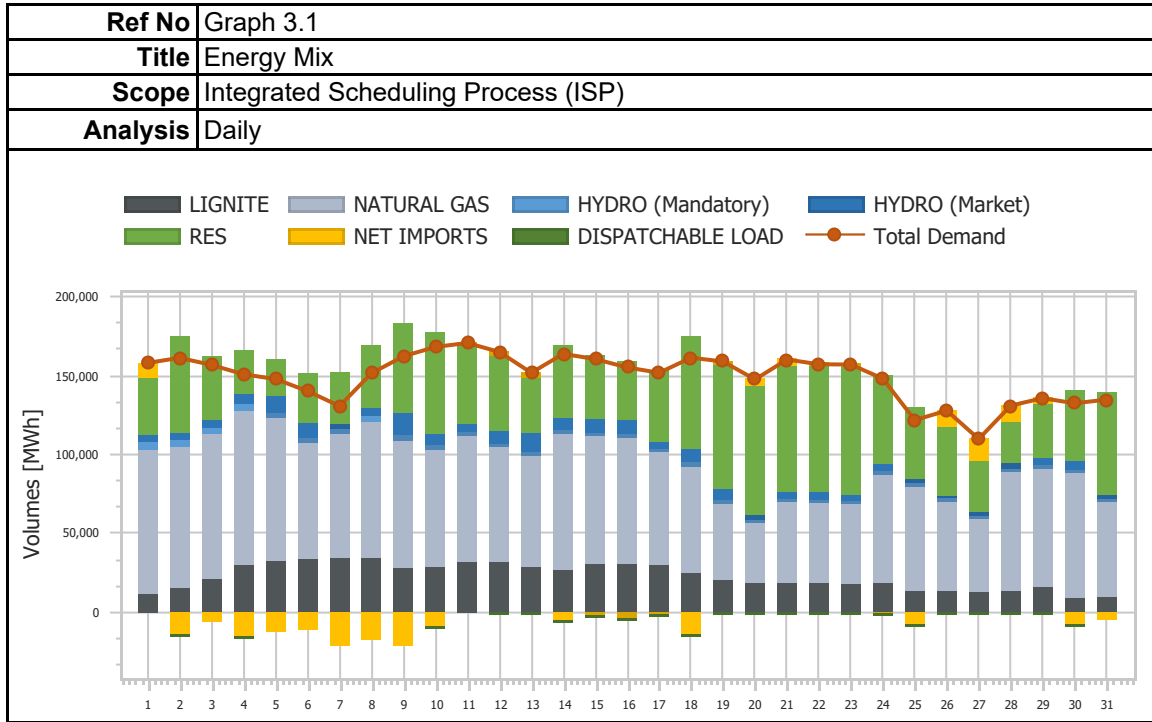
| | |
|-----------------|------------------------------------|
| Ref No | Graph 2.5.2 |
| Title | IDM Energy Mix Changes |
| Scope | Intra-Day Market Auction 2 (IDMA2) |
| Analysis | Daily |



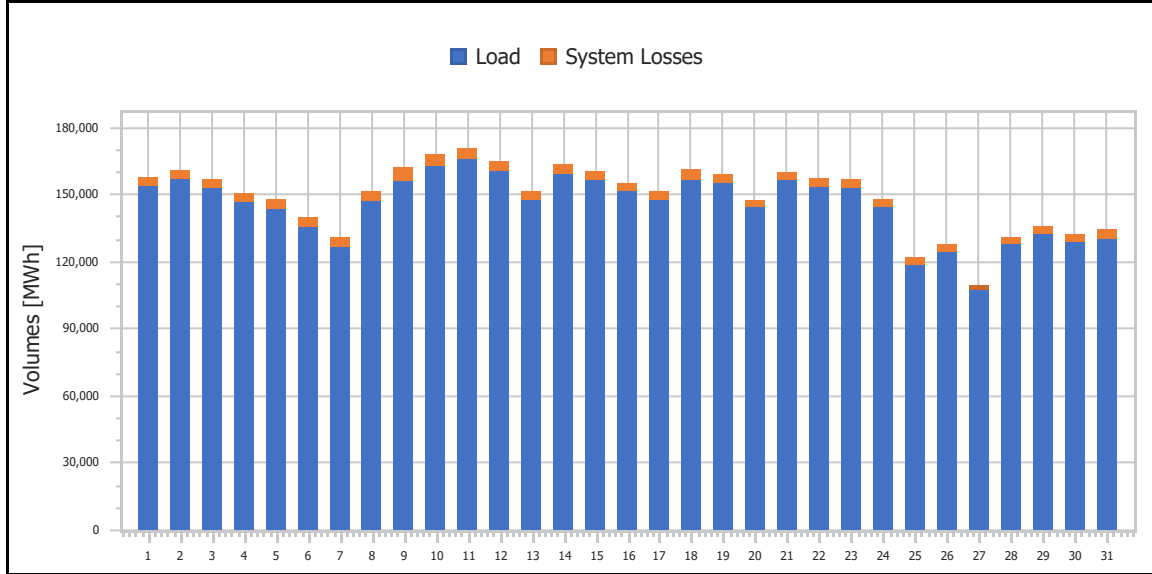
| | |
|-----------------|------------------------------------|
| Ref No | Graph 2.5.3 |
| Title | IDM Energy Mix Changes |
| Scope | Intra-Day Market Auction 3 (IDMA3) |
| Analysis | Daily |



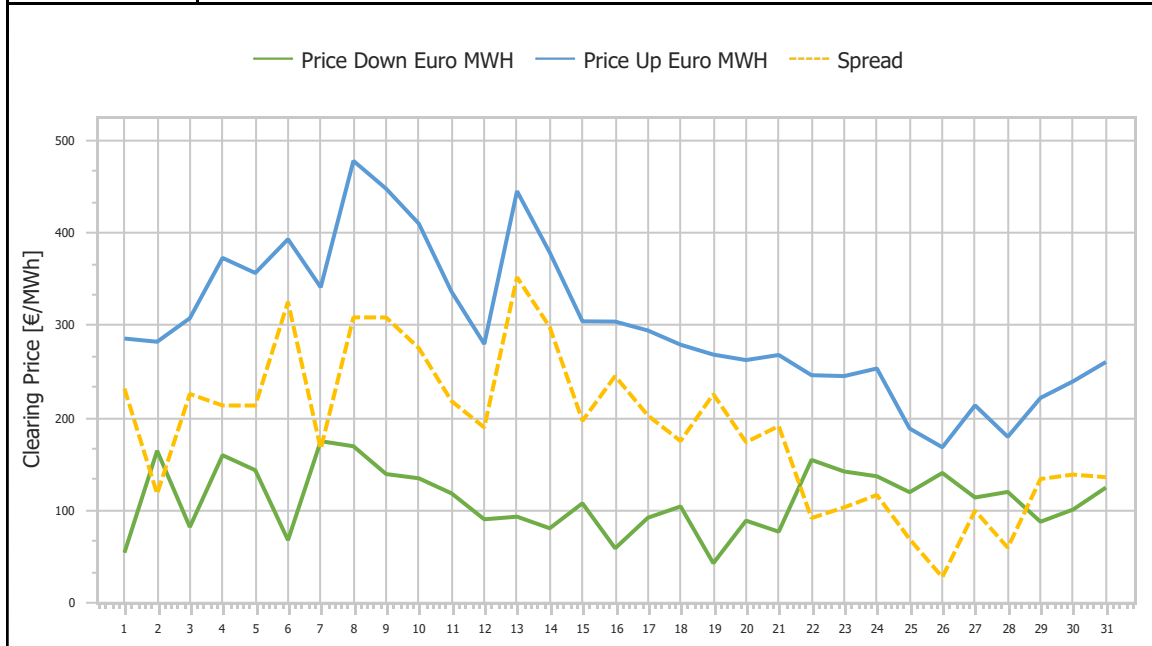
3. Integrated Scheduling Process (ISP)



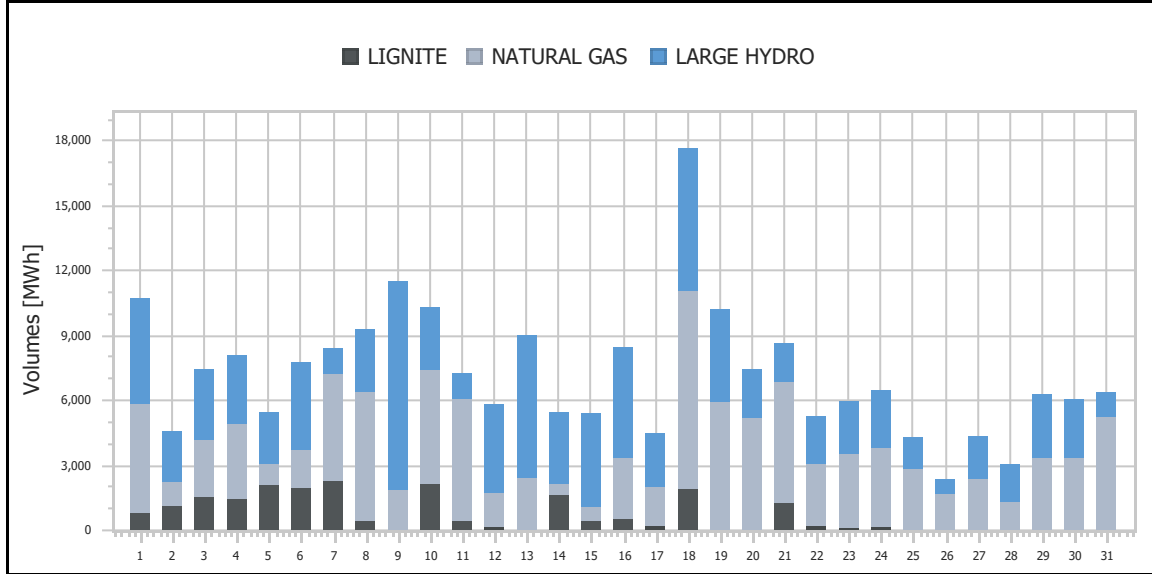
| | |
|-----------------|-------------------------------------|
| Ref No | Graph 3.3 |
| Title | Demand & System Losses |
| Scope | Integrated Scheduling Process (ISP) |
| Analysis | Daily |



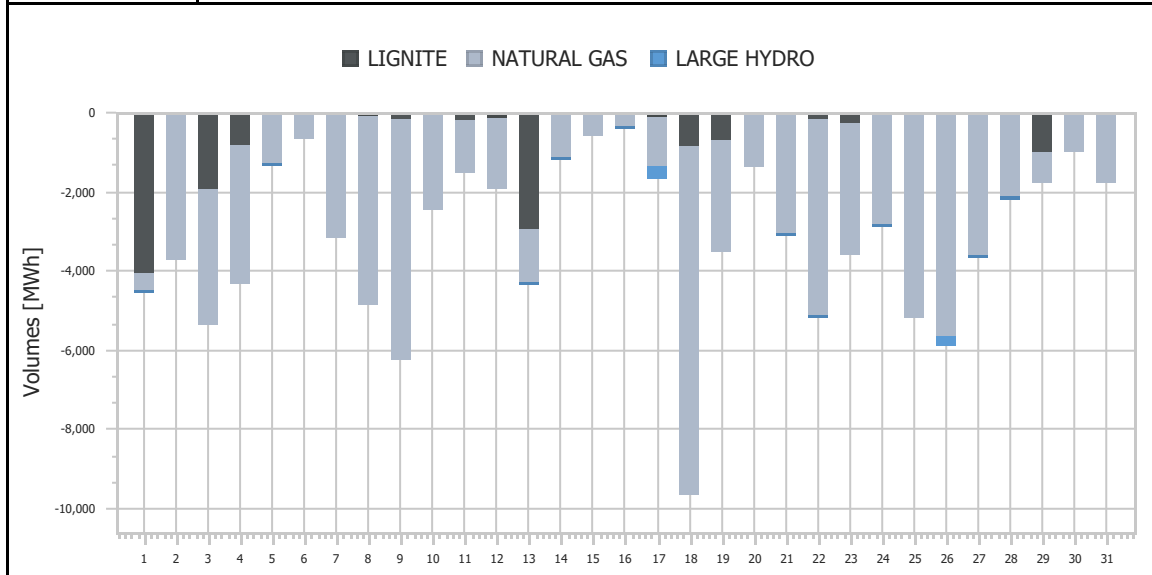
| | |
|-----------------|-------------------------------------|
| Ref No | Graph 3.4 |
| Title | Clearing Prices |
| Scope | Integrated Scheduling Process (ISP) |
| Analysis | Daily |



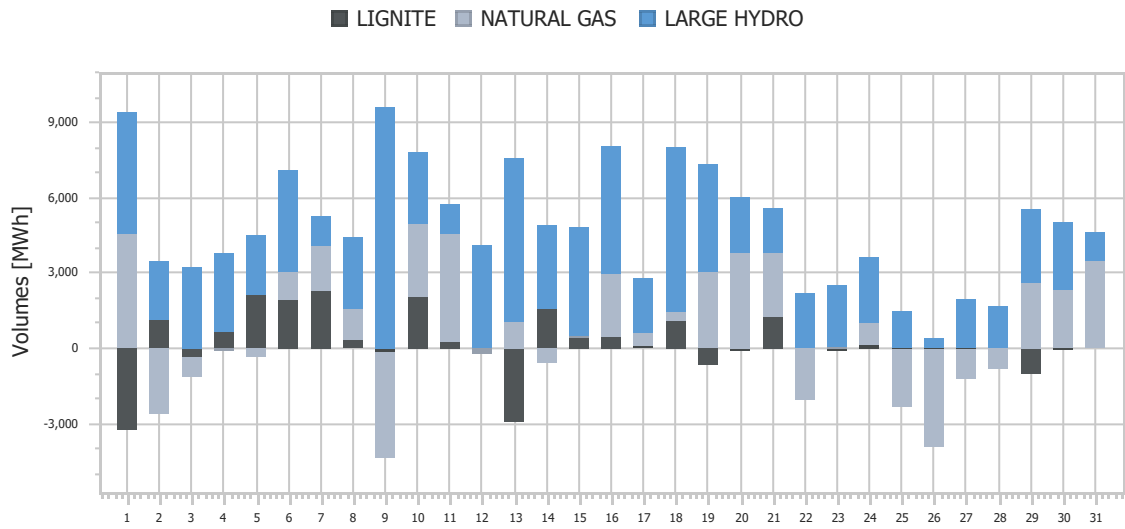
| | |
|-----------------|-------------------------------------|
| Ref No | Graph 3.5 |
| Title | Upward Activated Balancing energy |
| Scope | Integrated Scheduling Process (ISP) |
| Analysis | Daily |



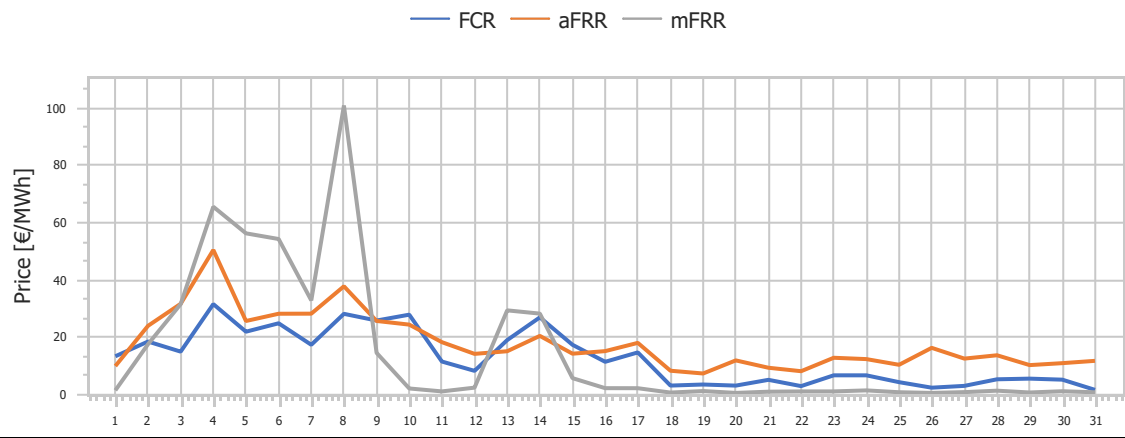
| | |
|-----------------|-------------------------------------|
| Ref No | Graph 3.6 |
| Title | Downward Activated Balancing energy |
| Scope | Integrated Scheduling Process (ISP) |
| Analysis | Daily |



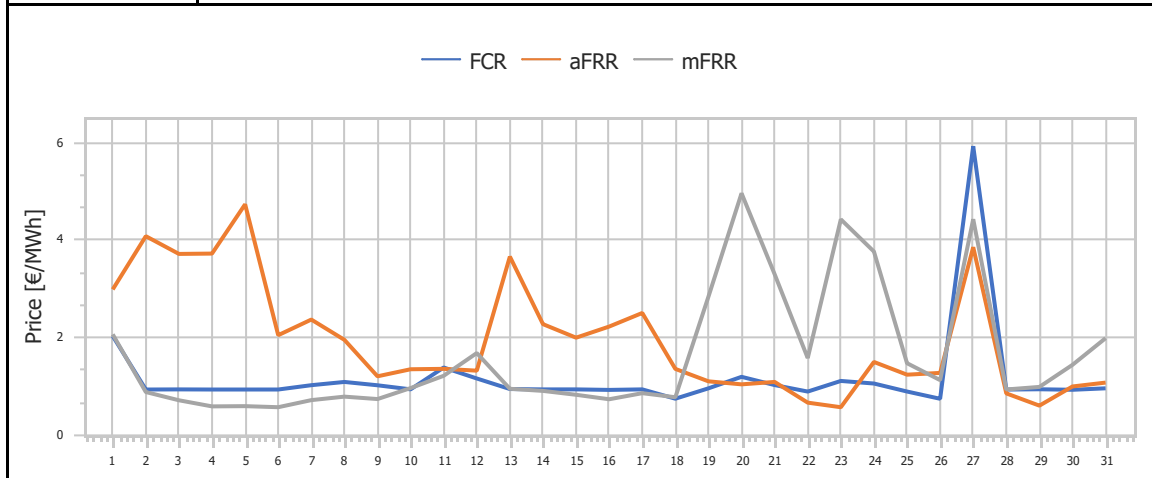
| | |
|-----------------|-------------------------------------|
| Ref No | Graph 3.7 |
| Title | Net Activated Balancing energy |
| Scope | Integrated Scheduling Process (ISP) |
| Analysis | Daily |



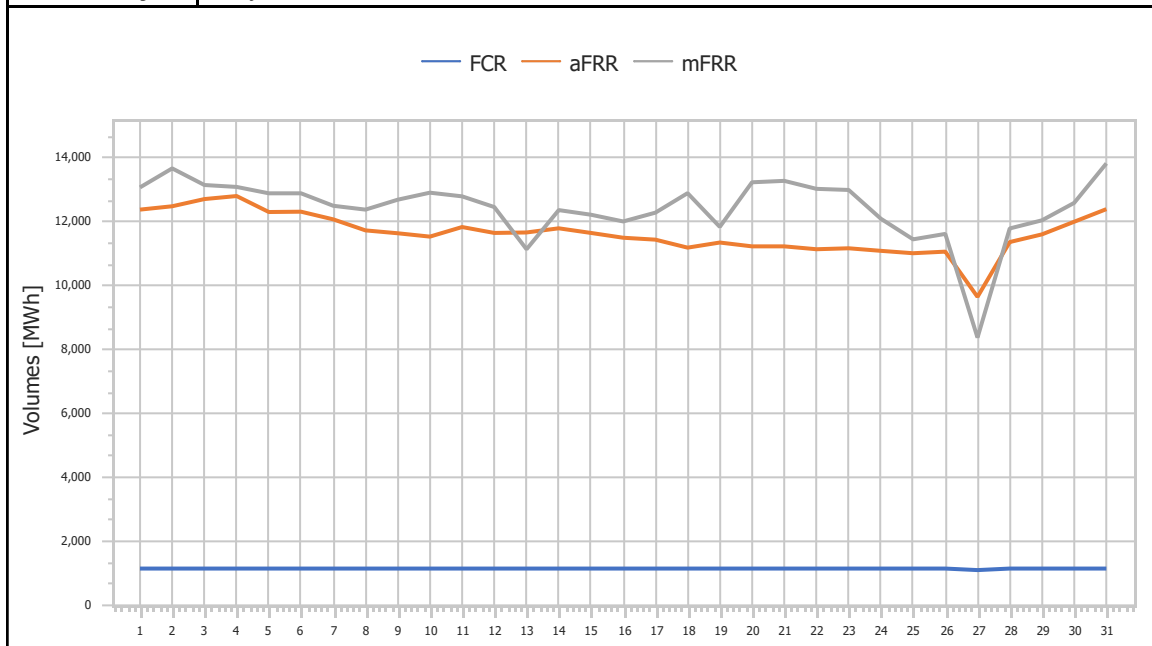
| | |
|-----------------|-------------------------------------|
| Ref No | Graph 3.8 |
| Title | Upward Capacity Reserves Prices |
| Scope | Integrated Scheduling Process (ISP) |
| Analysis | Daily |



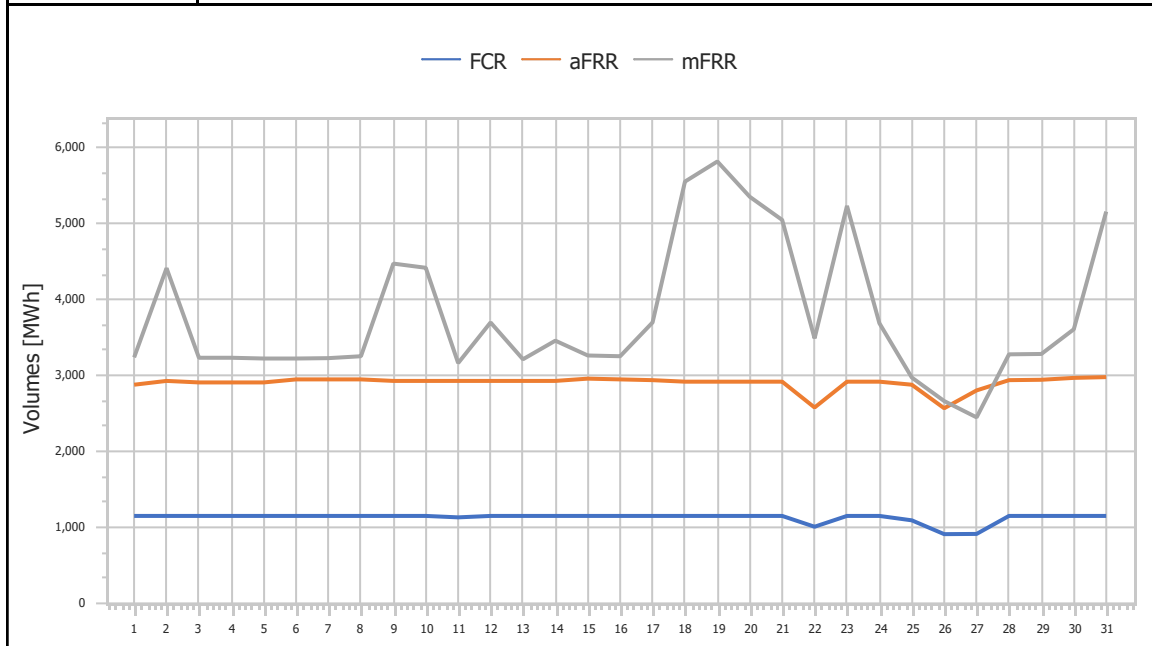
| | |
|-----------------|-------------------------------------|
| Ref No | Graph 3.9 |
| Title | Downward Capacity Reserves Prices |
| Scope | Integrated Scheduling Process (ISP) |
| Analysis | Daily |



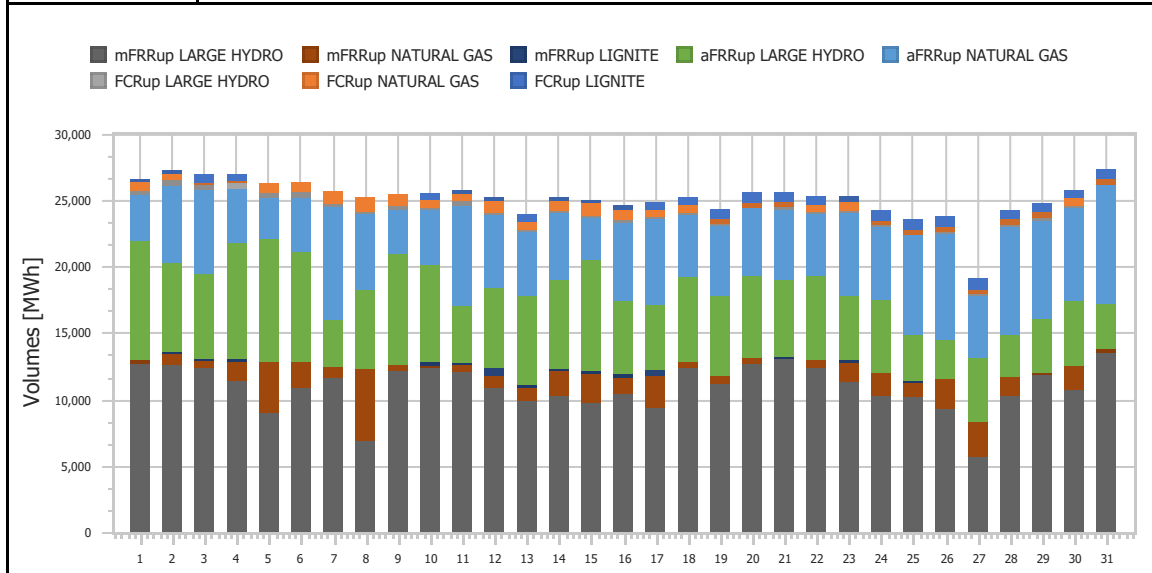
| | |
|-----------------|-------------------------------------|
| Ref No | Graph 3.10 |
| Title | Upward Capacity Reserves Volumes |
| Scope | Integrated Scheduling Process (ISP) |
| Analysis | Daily |

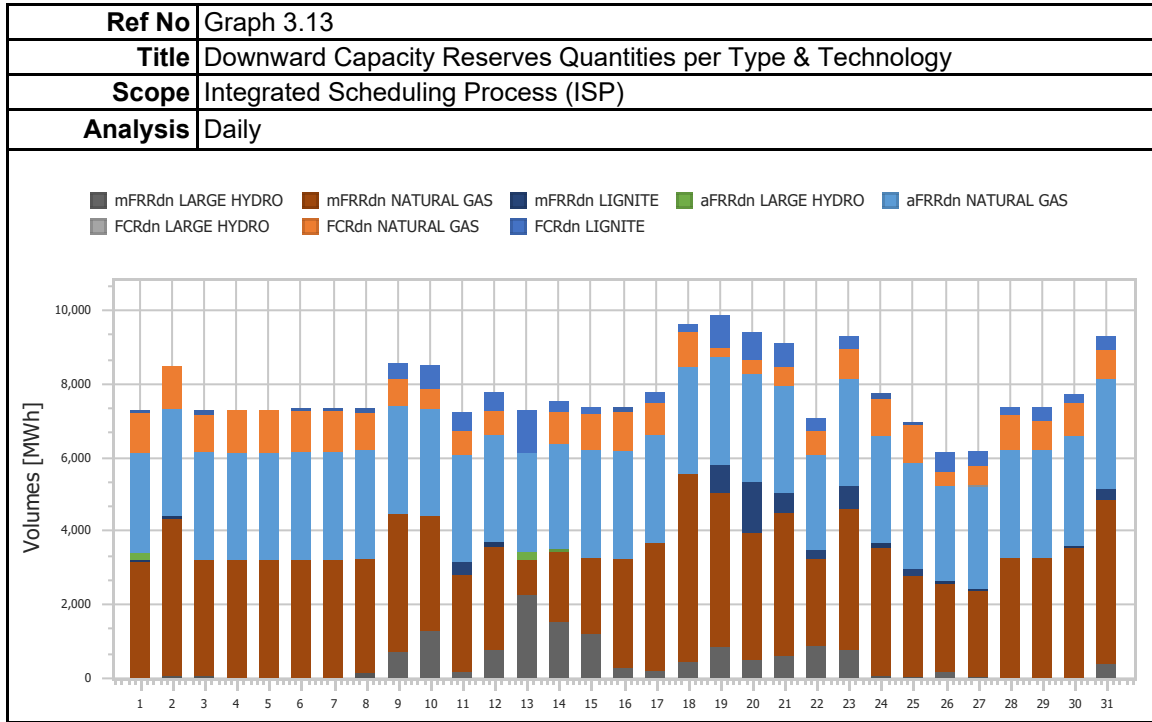


| | |
|-----------------|-------------------------------------|
| Ref No | Graph 3.11 |
| Title | Downward Capacity Reserves Volumes |
| Scope | Integrated Scheduling Process (ISP) |
| Analysis | Daily |

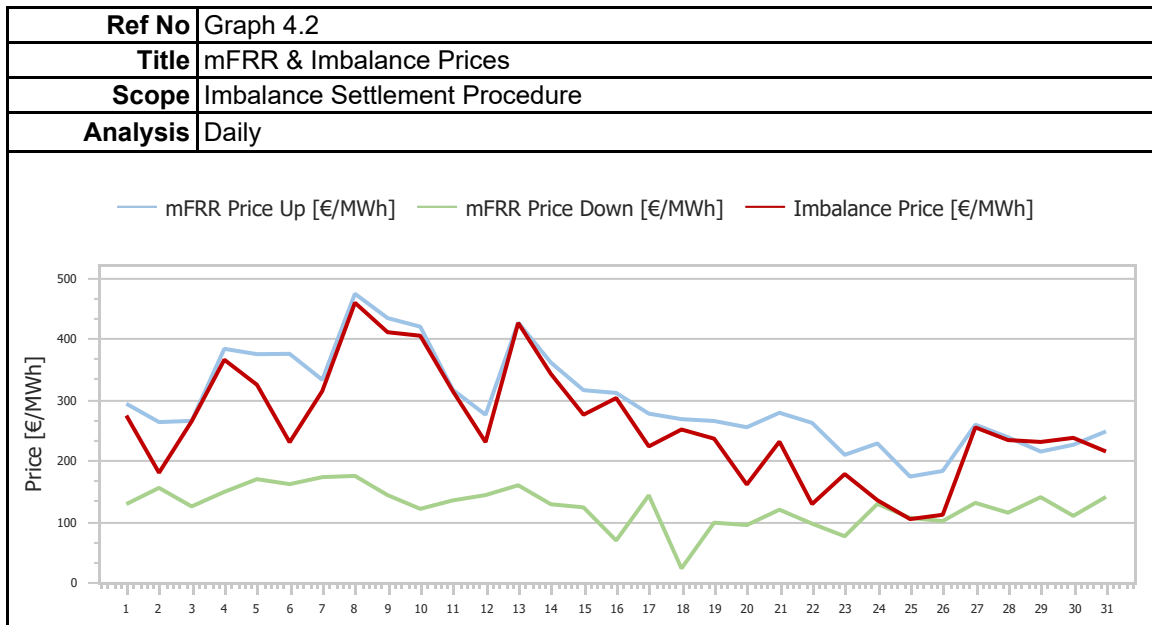
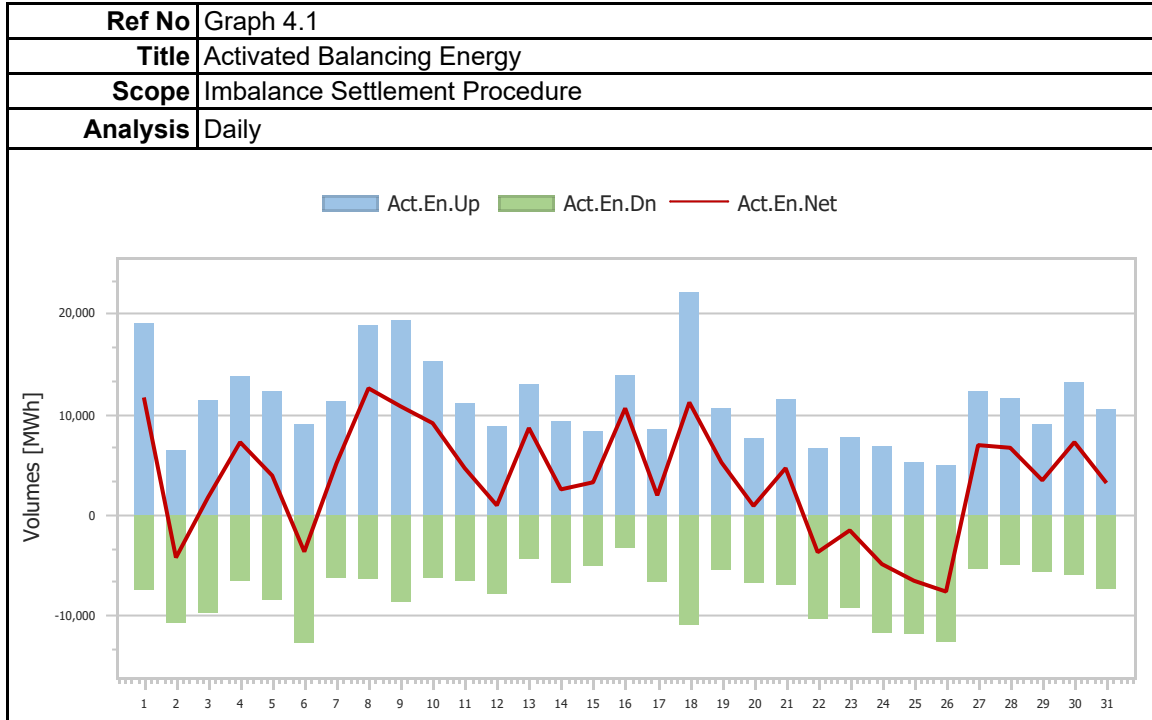


| | |
|-----------------|---|
| Ref No | Graph 3.12 |
| Title | Upward Capacity Reserves Volumes per Technology |
| Scope | Integrated Scheduling Process (ISP) |
| Analysis | Daily |

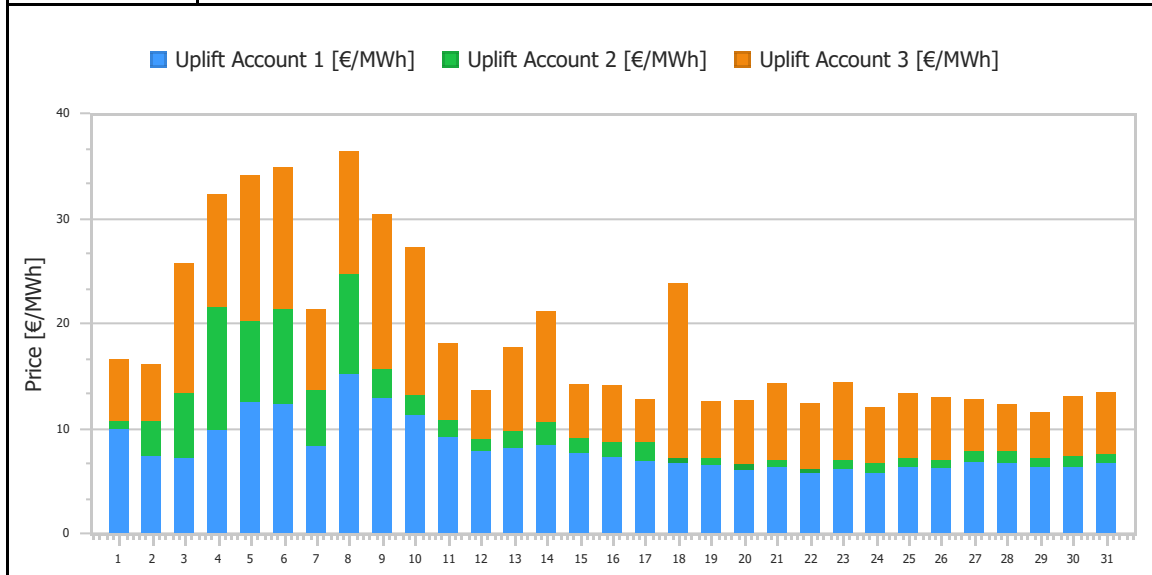




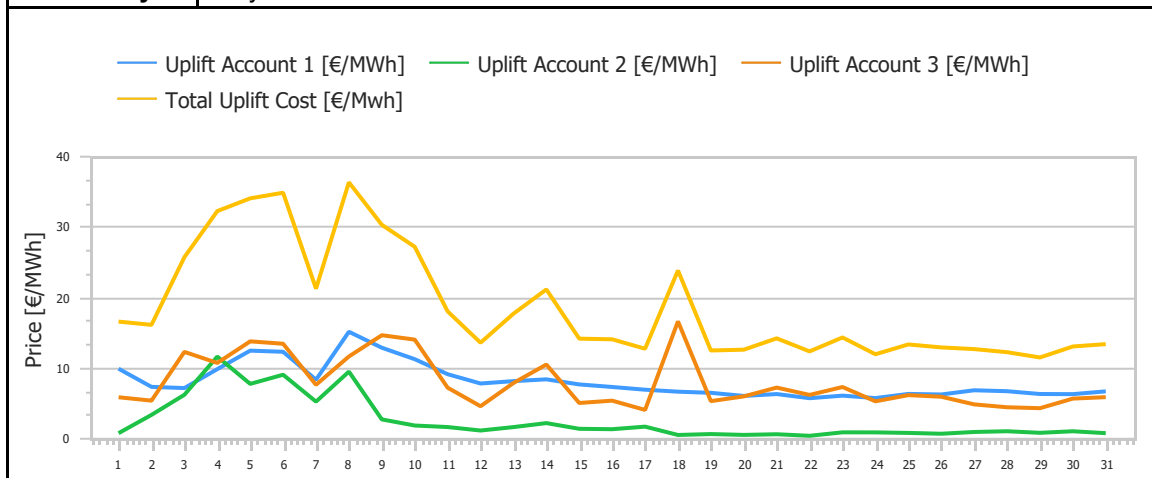
4. Imbalance Settlement Procedure



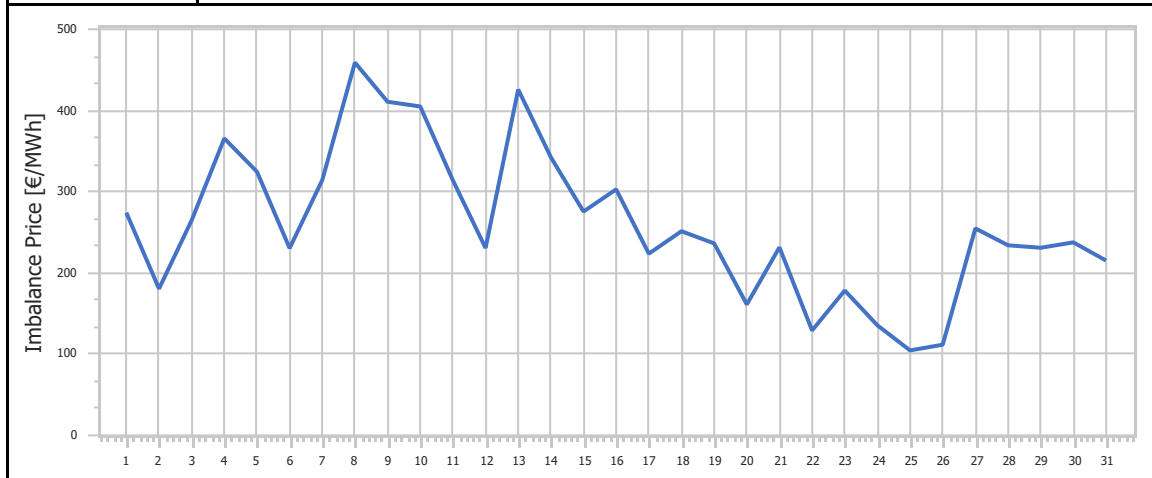
| | |
|-----------------|--------------------------------|
| Ref No | Graph 4.3 |
| Title | Uplift Accounts Cost |
| Scope | Imbalance Settlement Procedure |
| Analysis | Daily |



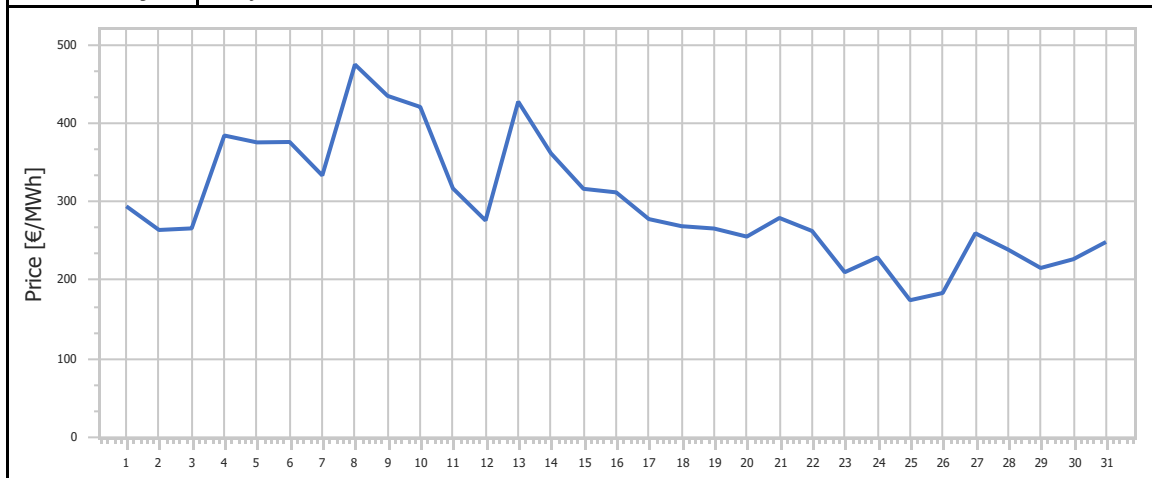
| | |
|-----------------|--------------------------------|
| Ref No | Graph 4.4 |
| Title | Uplift Accounts Cost |
| Scope | Imbalance Settlement Procedure |
| Analysis | Daily |



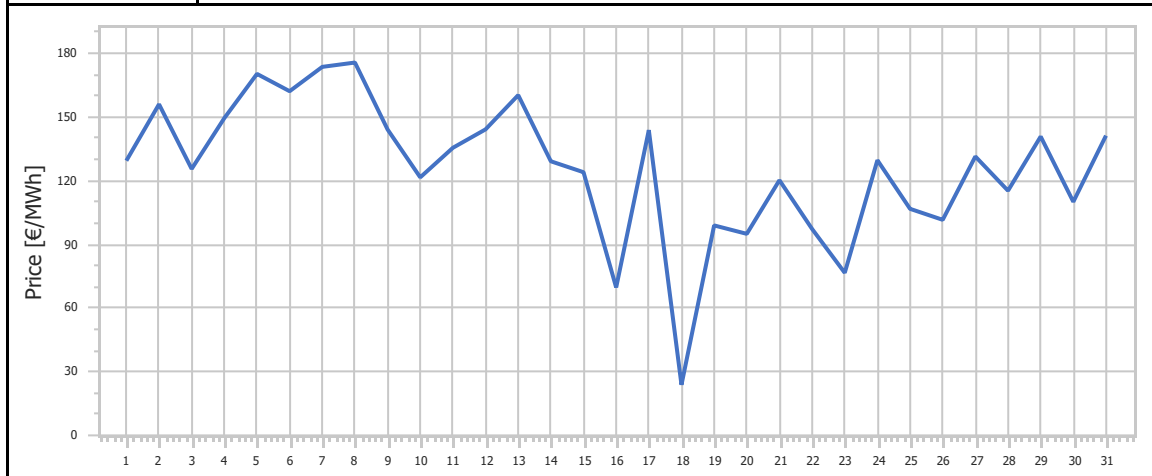
| | |
|-----------------|--------------------------------|
| Ref No | Graph 4.5 |
| Title | Imbalance Price |
| Scope | Imbalance Settlement Procedure |
| Analysis | Daily |



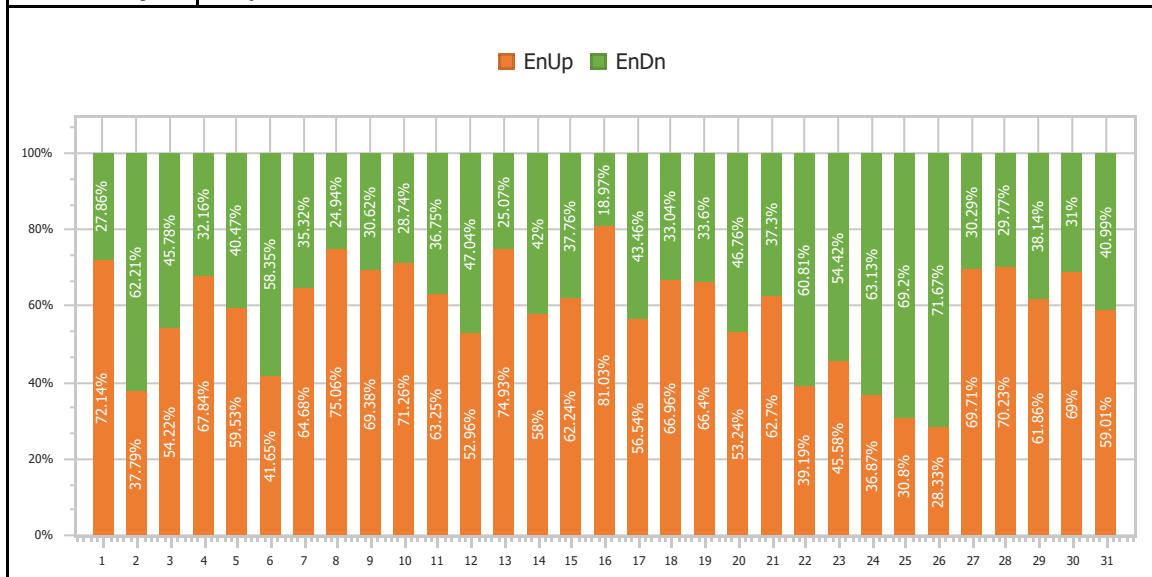
| | |
|-----------------|--------------------------------|
| Ref No | Graph 4.6 |
| Title | mFRR Up Price |
| Scope | Imbalance Settlement Procedure |
| Analysis | Daily |



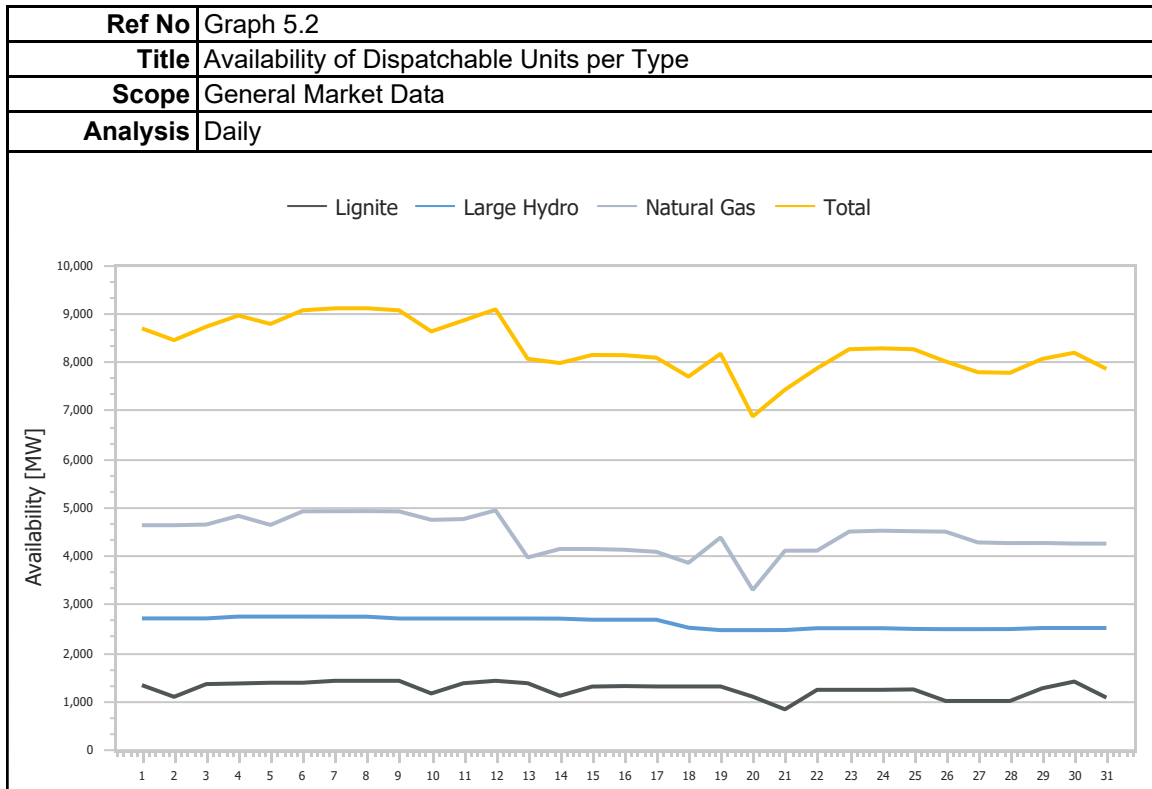
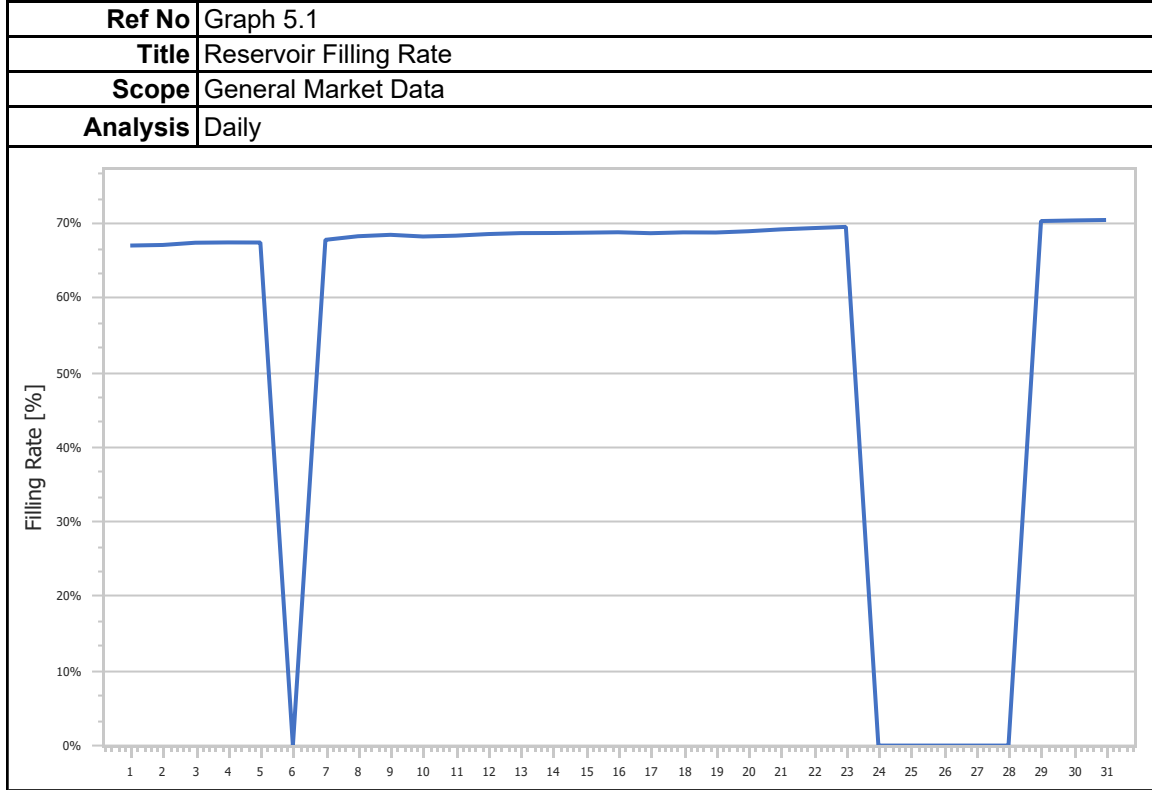
| | |
|-----------------|--------------------------------|
| Ref No | Graph 4.7 |
| Title | mFRR Down Price |
| Scope | Imbalance Settlement Procedure |
| Analysis | Daily |



| | |
|-----------------|---------------------------------------|
| Ref No | Graph 4.8 |
| Title | Balancing Energy Activation Direction |
| Scope | Imbalance Settlement Procedure |
| Analysis | Daily |



5. General Market Data



1. Statistics

| | | | | |
|-----------------------|--|------------------|--------------------------|------------------|
| Ref No | Table 1.1 | | | |
| Title | Market Shares per Aggregated Classification - SELL | | | |
| Scope | Day Ahead Market (DAM) | | | |
| Analysis | Monthly | | | |
| Classification | Quantity [MWh] | Share [%] | Value [EUR] | Share [%] |
| Lignite | 721,184.268 | 13.31% | 206,276,041.73€ | 13.71% |
| Crete Conventional | 182,729.400 | 3.37% | 52,069,866.83€ | 3.46% |
| Natural Gas | 2,171,441.234 | 40.09% | 627,879,116.97€ | 41.74% |
| Large Hydro | 169,247.931 | 3.12% | 56,212,603.83€ | 3.74% |
| RES | 1,604,282.543 | 29.62% | 414,749,982.04€ | 27.57% |
| Crete Renewables | 59,522.000 | 1.10% | 15,805,487.72€ | 1.05% |
| Imports | 508,128.540 | 9.38% | 131,181,357.70€ | 8.72% |
| Total | 5,416,535.917 | 100.00% | 1,504,174,456.81€ | 100.00% |

| | | | | | | | | | |
|---------------------------|---|------------------------|--------------------------|--------------------------|------------------------------|------------------------|----------------------|-------------------------|--------------------------|
| Ref No | Table 1.2 | | | | | | | | |
| Title | Statistics per Aggregated Classification - SELL | | | | | | | | |
| Scope | Day Ahead Market (DAM) | | | | | | | | |
| Analysis | Monthly | | | | | | | | |
| | MCP [€/MWh] | Total [MWh] | Lignite [MWh] | CR Conv [MWh] | Natural Gas [MWh] | Hydro [MWh] | RES [MWh] | CR RES [MWh] | Imports [MWh] |
| Total | - | 5,416,535.92 | 721,184.27 | 182,729.40 | 2,171,441.23 | 169,247.93 | 1,604,282.54 | 59,522.00 | 508,128.54 |
| Average | 272.59 | 174,726.97 | 23,264.01 | 5,894.50 | 70,046.49 | 5,459.61 | 51,751.05 | 1,920.06 | 16,391.24 |
| Min | 207.20 | 126,358.04 | 9,862.29 | 4,228.00 | 33,184.16 | 2,507.27 | 23,867.52 | 532.00 | 4,832.80 |
| Min day | 27 | 27 | 31 | 27 | 20 | 27 | 5 | 1 | 8 |
| Max | 426.90 | 196,057.75 | 37,260.00 | 8,210.40 | 99,206.78 | 12,203.08 | 88,521.10 | 3,335.00 | 25,846.10 |
| Max day | 8 | 9 | 9 | 12 | 4 | 13 | 20 | 19 | 27 |
| Spread | 219.70 | 69,699.71 | 27,397.71 | 3,982.40 | 66,022.62 | 9,695.81 | 64,653.59 | 2,803.00 | 21,013.30 |
| Standard Deviation | 51.33 | 15,563.63 | 7,802.74 | 1,080.42 | 15,588.32 | 2,319.19 | 18,767.14 | 901.38 | 5,275.53 |

| | |
|-----------------|---|
| Ref No | Table 1.3 |
| Title | Market Shares per Aggregated Classification - BUY |
| Scope | Day Ahead Market (DAM) |
| Analysis | Monthly |

| Classification | Quantity [MWh] | Share [%] | Value [EUR] | Share [%] |
|----------------|----------------------|----------------|--------------------------|----------------|
| System Losses | 119,250.500 | 2.20% | 33,476,193.80€ | 2.23% |
| Crete Load | 275,736.000 | 5.09% | 76,826,483.74€ | 5.11% |
| HV Load | 606,084.570 | 11.19% | 164,019,014.01€ | 10.90% |
| MV Load | 867,061.876 | 16.01% | 238,223,691.88€ | 15.84% |
| LV Load | 2,967,043.077 | 54.78% | 830,881,562.98€ | 55.24% |
| PUMP | 9,635.405 | 0.18% | 1,927,489.05€ | 0.13% |
| Exports | 571,724.820 | 10.56% | 158,820,091.26€ | 10.56% |
| Total | 5,416,536.250 | 100.00% | 1,504,174,526.72€ | 100.00% |

| | |
|-----------------|--|
| Ref No | Table 1.4 |
| Title | Statistics per Aggregated Classification - BUY |
| Scope | Day Ahead Market (DAM) |
| Analysis | Monthly |

| | MCP [€/MWh] | Total [MWh] | Sys Losses [MWh] | CR Load [MWh] | HV [MWh] | MV [MWh] | LV [MWh] | PUMP [MWh] | Exports [MWh] |
|---------------------------|----------------|----------------|---------------------|------------------|-------------|-------------|--------------|---------------|------------------|
| Total | - | 5,416,536.25 | 119,250.50 | 275,736.00 | 606,084.57 | 867,061.88 | 2,967,043.08 | 9,635.40 | 571,724.82 |
| Average | 272.59 | 174,726.98 | 3,846.79 | 8,894.71 | 19,551.12 | 27,969.74 | 95,711.07 | 481.77 | 18,442.74 |
| Min | 207.20 | 126,357.97 | 2,177.50 | 6,203.00 | 17,645.06 | 18,288.73 | 71,840.44 | 10.40 | 7,689.00 |
| Min day | 27 | 27 | 27 | 27 | 14 | 27 | 27 | 2 | 27 |
| Max | 426.90 | 196,057.83 | 5,872.50 | 10,477.00 | 21,606.02 | 32,097.89 | 111,235.49 | 1,255.00 | 27,571.70 |
| Max day | 8 | 9 | 9 | 16 | 26 | 10 | 12 | 22 | 9 |
| Spread | 219.70 | 69,699.86 | 3,695.00 | 4,274.00 | 3,960.96 | 13,809.16 | 39,395.05 | 1,244.60 | 19,882.70 |
| Standard Deviation | 51.33 | 15,563.62 | 716.20 | 1,095.66 | 814.36 | 4,289.93 | 10,449.93 | 239.48 | 5,395.73 |

2. Market Shares

| Ref No | Table 2.1.1 | | | | |
|-----------------|---|----------------|-----------------------|----------------|--|
| Title | Market Shares - Upward Capacity Reserves Volumes per Type | | | | |
| Scope | Balancing Market (BM) | | | | |
| Analysis | Monthly | | | | |
| Type | Quantity [MW] | Share [%] | Value [EUR] | Share [%] | |
| aFRR | 1,404,119.830 | 67.00% | 5,990,519.25€ | 51.12% | |
| FCR | 134,319.840 | 6.41% | 601,020.13€ | 5.13% | |
| mFRR | 557,346.960 | 26.59% | 5,126,198.31€ | 43.75% | |
| Total | 2,095,786.630 | 100.00% | 11,717,737.69€ | 100.00% | |

| Ref No | Table 2.1.2 | | | | |
|-----------------|---|----------------|--------------------|----------------|--|
| Title | Market Shares - Downward Capacity Reserves per Type | | | | |
| Scope | Balancing Market(BM) | | | | |
| Analysis | Monthly | | | | |
| Type | Quantity [MW] | Share [%] | Value [EUR] | Share [%] | |
| aFRR | 355,024.930 | 37.37% | 245,723.83€ | 42.49% | |
| FCR | 137,393.070 | 14.46% | 69,302.35€ | 11.98% | |
| mFRR | 457,732.140 | 48.17% | 263,299.89€ | 45.53% | |
| Total | 950,150.140 | 100.00% | 578,326.07€ | 100.00% | |

| Ref No | Table 2.1.3 | | | |
|-----------------|--|----------------|------------------------|----------------|
| Title | Market Shares - Upward Activated Balancing Energy per Type | | | |
| Scope | Balancing Market (BM) | | | |
| Analysis | Monthly | | | |
| Type | Quantity [MWh] | Share [%] | Value [EUR] | Share [%] |
| aFRR | 119,959.040 | 34.23% | 40,472,057.37€ | 34.18% |
| mFRR | 230,461.910 | 65.77% | 77,943,660.43€ | 65.82% |
| Total | 350,420.950 | 100.00% | 118,415,717.80€ | 100.00% |

| Ref No | Table 2.1.4 | | | |
|-----------------|--|----------------|-----------------------|----------------|
| Title | Market Shares - Downward Activated Balancing Energy per Type | | | |
| Scope | Balancing Market (BM) | | | |
| Analysis | Monthly | | | |
| Type | Quantity [MWh] | Share [%] | Value [EUR] | Share [%] |
| aFRR | 86,586.820 | 36.47% | 9,677,194.01€ | 33.74% |
| mFRR | 150,833.240 | 63.53% | 19,006,471.34€ | 66.26% |
| Total | 237,420.050 | 100.00% | 28,683,665.35€ | 100.00% |

3. Market Overview

| | |
|-----------------|--|
| Ref No | Table 3.1 |
| Title | Total Transactions Quantity per Market |
| Scope | DAM, IDM, Balancing Energy Market |
| Analysis | Monthly |

| Market | Quantity [MWh] | Share [%] |
|--------------------------|---------------------|----------------|
| DAM | 5,416,535.92 | 95.30% |
| IDMA1 | 70,891.07 | 1.25% |
| IDMA2 | 51,291.16 | 0.90% |
| IDMA3 | 31,964.44 | 0.56% |
| IDM (Total) | 154,146.66 | 2.71% |
| Balancing Energy (Up) | 350,420.95 | 6.17% |
| Balancing Energy (Dn) | 237,420.05 | 4.18% |
| Balancing Energy (Total) | 113,000.90 | 1.99% |
| Total | 5,683,683.48 | 100.00% |

| | |
|-----------------|-------------------------------------|
| Ref No | Table 3.2 |
| Title | Total Transactions Value per Market |
| Scope | DAM, IDM, Balancing Energy Market |
| Analysis | Monthly |

| Market | Value [EUR] | Share [%] |
|----------------------------|--------------------------|----------------|
| DAM | 1,504,174,456.81€ | 91.06% |
| IDMA1 | 21,353,918.34€ | 1.29% |
| IDMA2 | 15,053,265.32€ | 0.91% |
| IDMA3 | 9,218,543.84€ | 0.56% |
| IDM (Total) | 45,625,727.50€ | 2.76% |
| Balancing Capacity (Up) | 11,717,737.69€ | 0.71% |
| Balancing Capacity (Dn) | 578,326.07€ | 0.04% |
| Balancing Capacity (Total) | 12,296,063.76€ | 0.74% |
| Balancing Energy (Up) | 118,415,717.80€ | 7.17% |
| Balancing Energy (Dn) | 28,683,665.35€ | 1.74% |
| Balancing Energy (Total) | 89,732,052.45€ | 5.43% |
| Balancing Market (Total) | 102,028,116.21€ | 6.18% |
| Total | 1,651,828,300.52€ | 100.00% |