

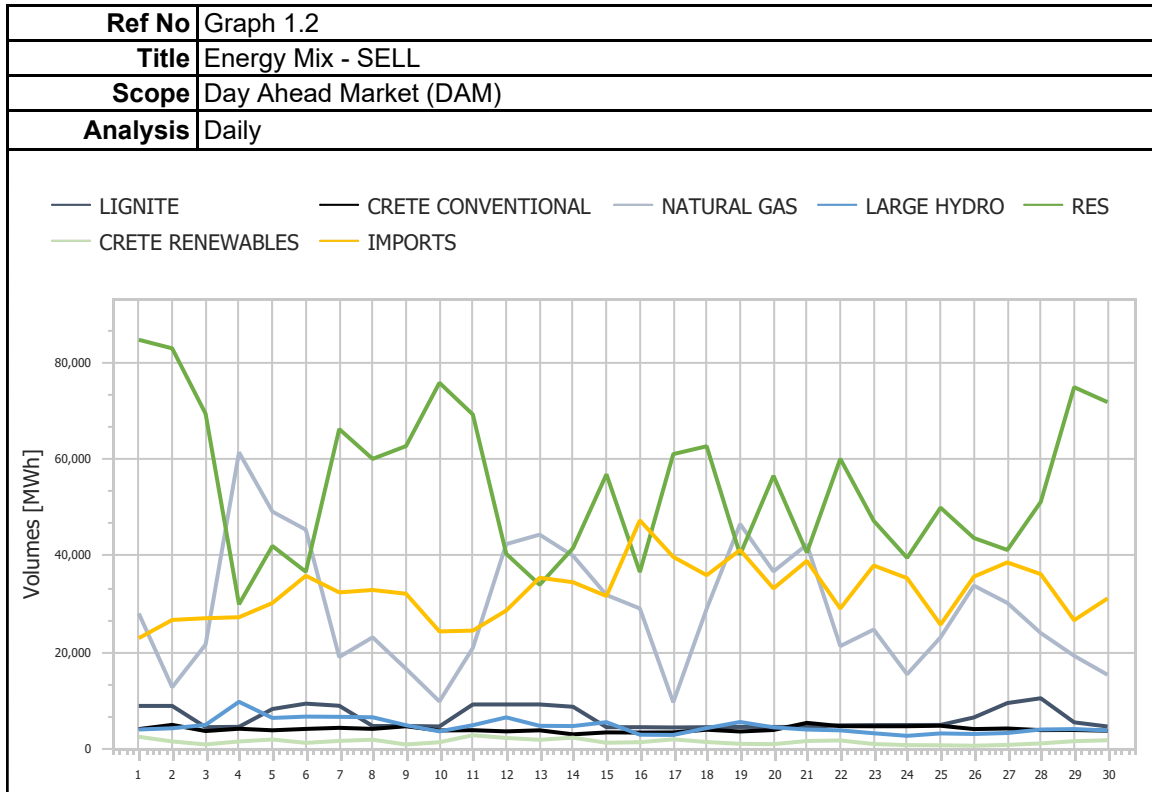
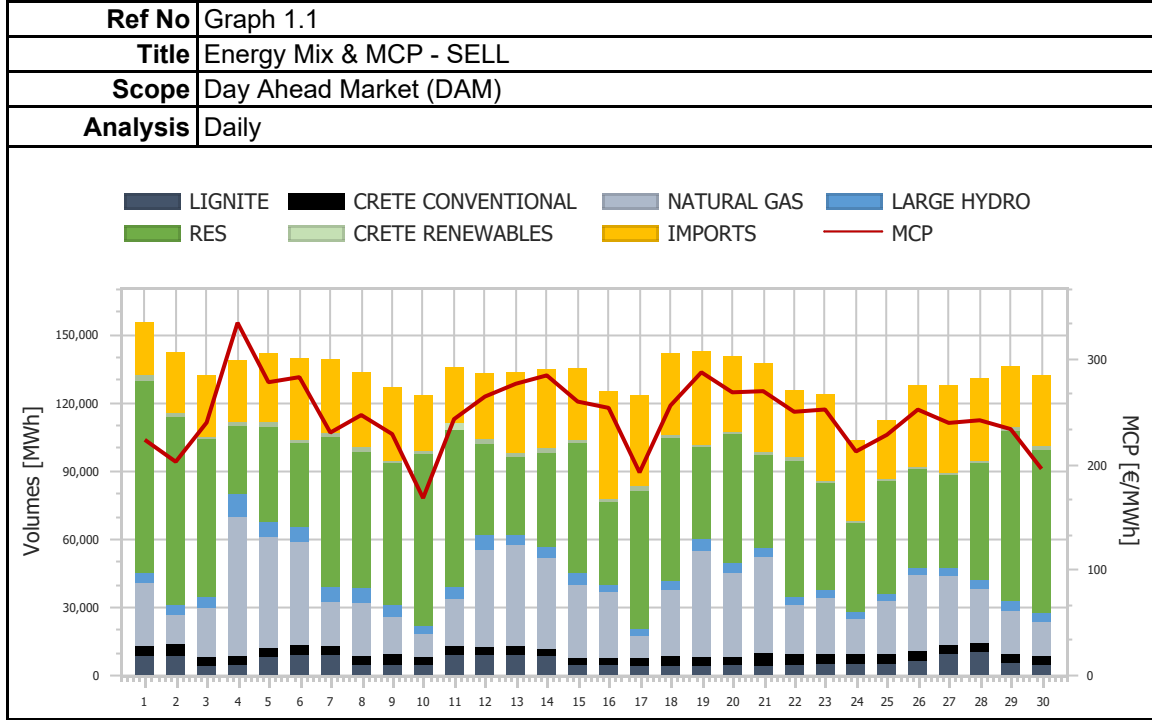
# Market Monitoring Report

Monthly - Public - 2

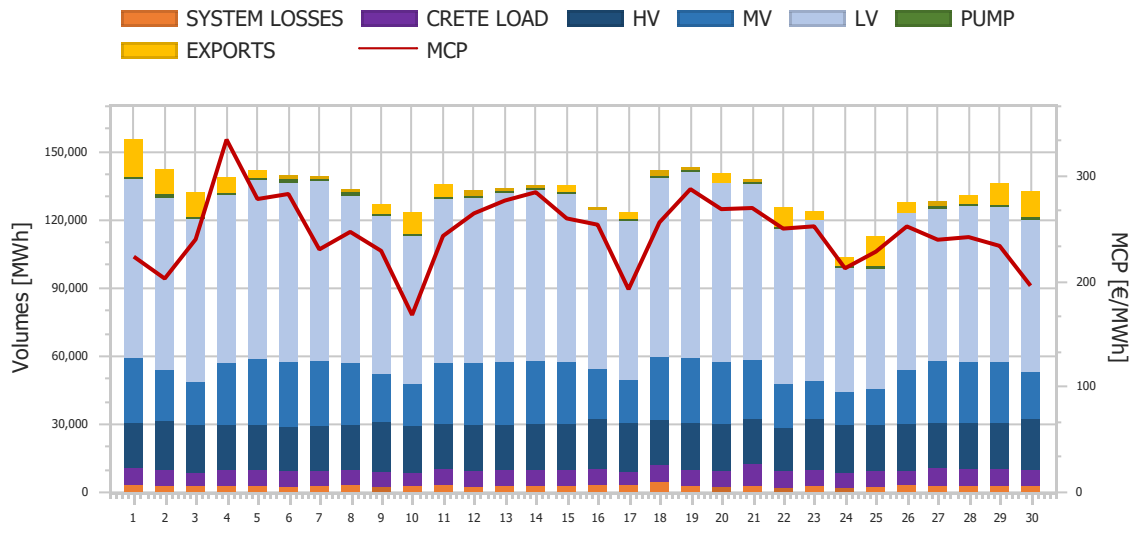
**04-2022**



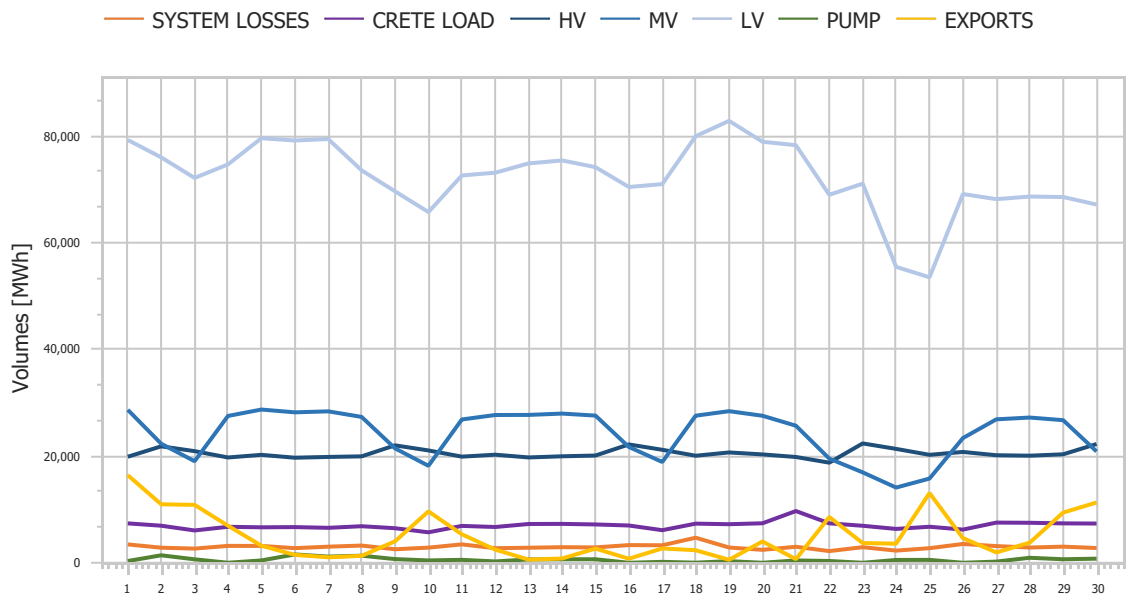
# 1. Day Ahead Market (DAM)



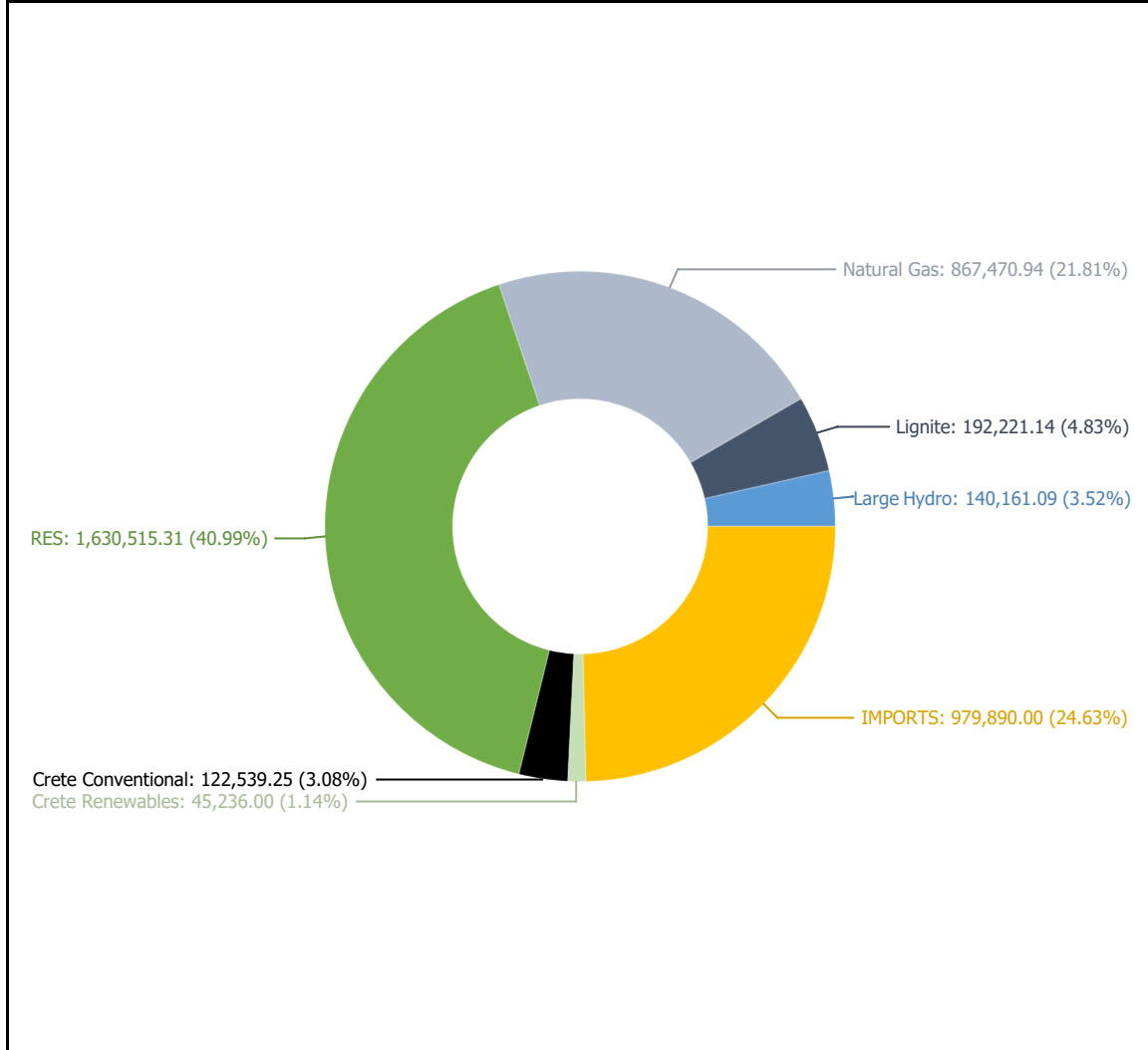
<b>Ref No</b>	Graph 1.3
<b>Title</b>	Energy Mix & MCP - BUY
<b>Scope</b>	Day Ahead Market (DAM)
<b>Analysis</b>	Daily



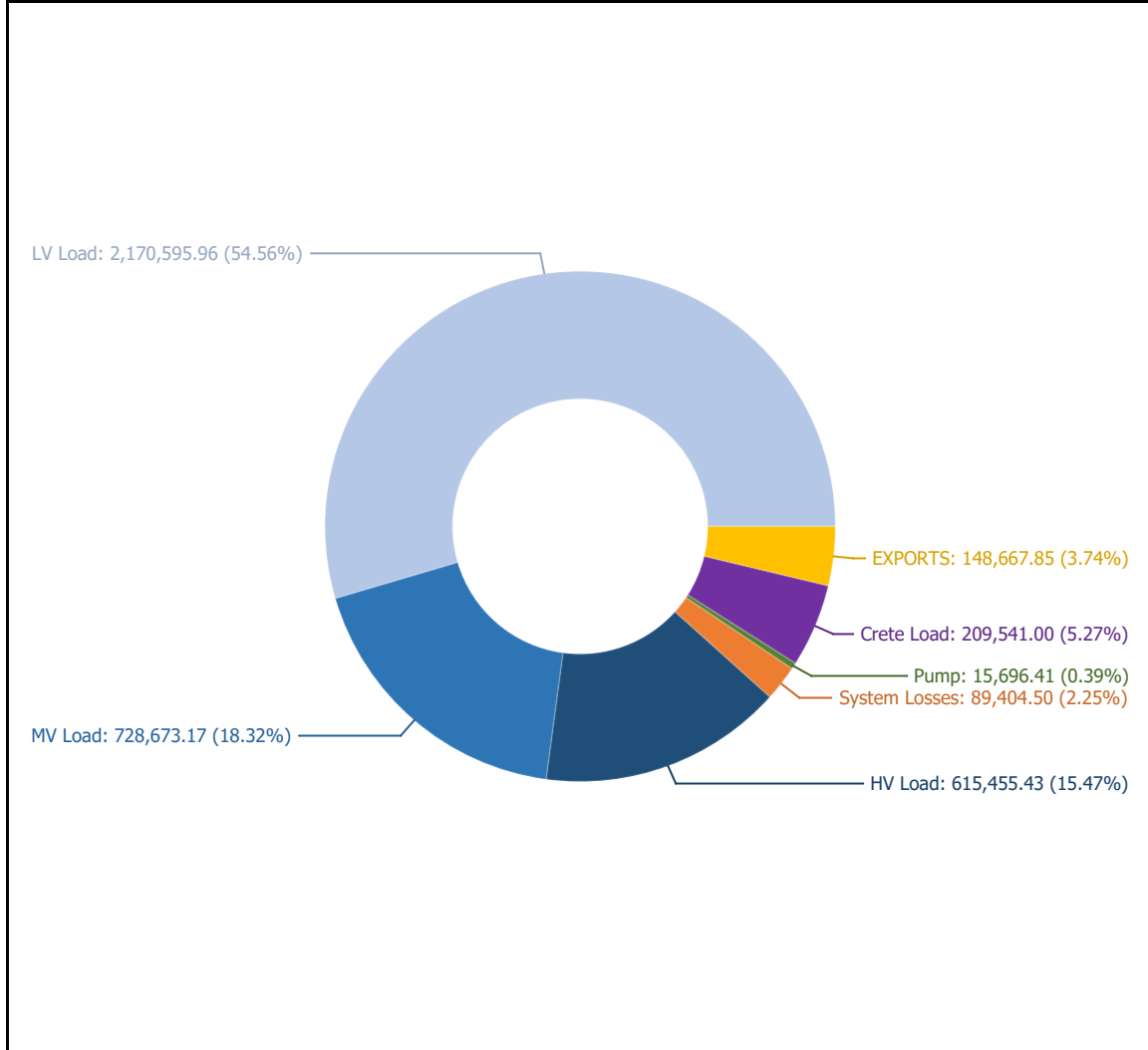
<b>Ref No</b>	Graph 1.4
<b>Title</b>	Energy Mix - BUY
<b>Scope</b>	Day Ahead Market (DAM)
<b>Analysis</b>	Daily

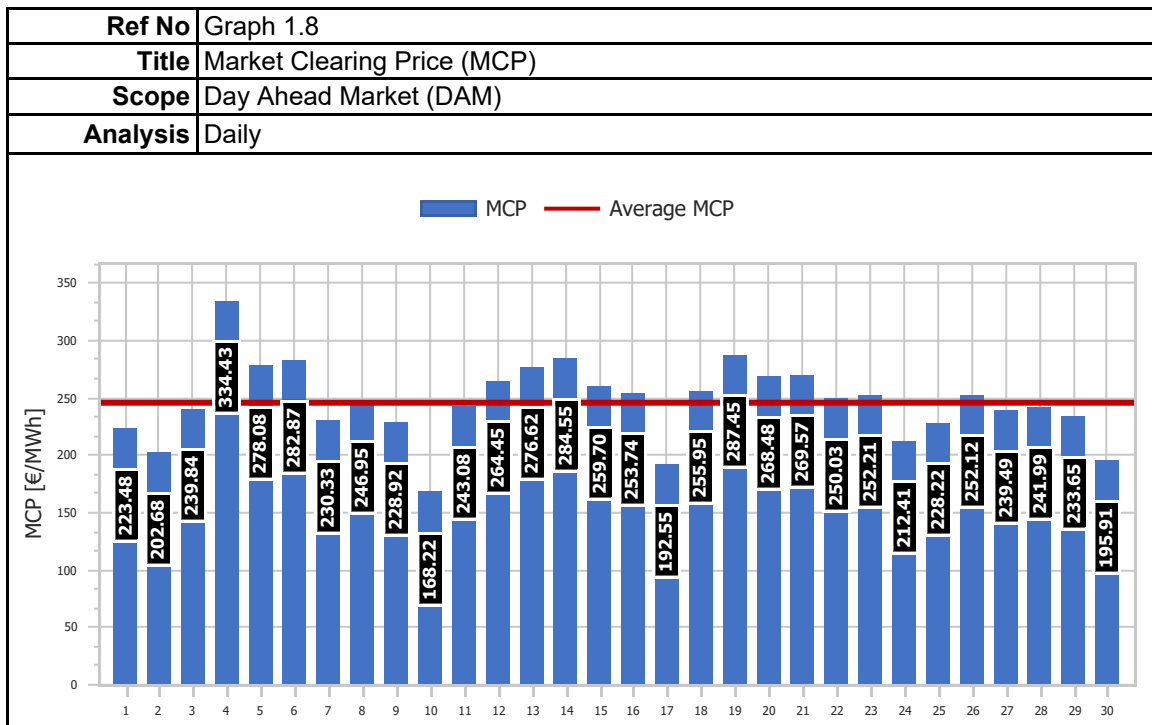
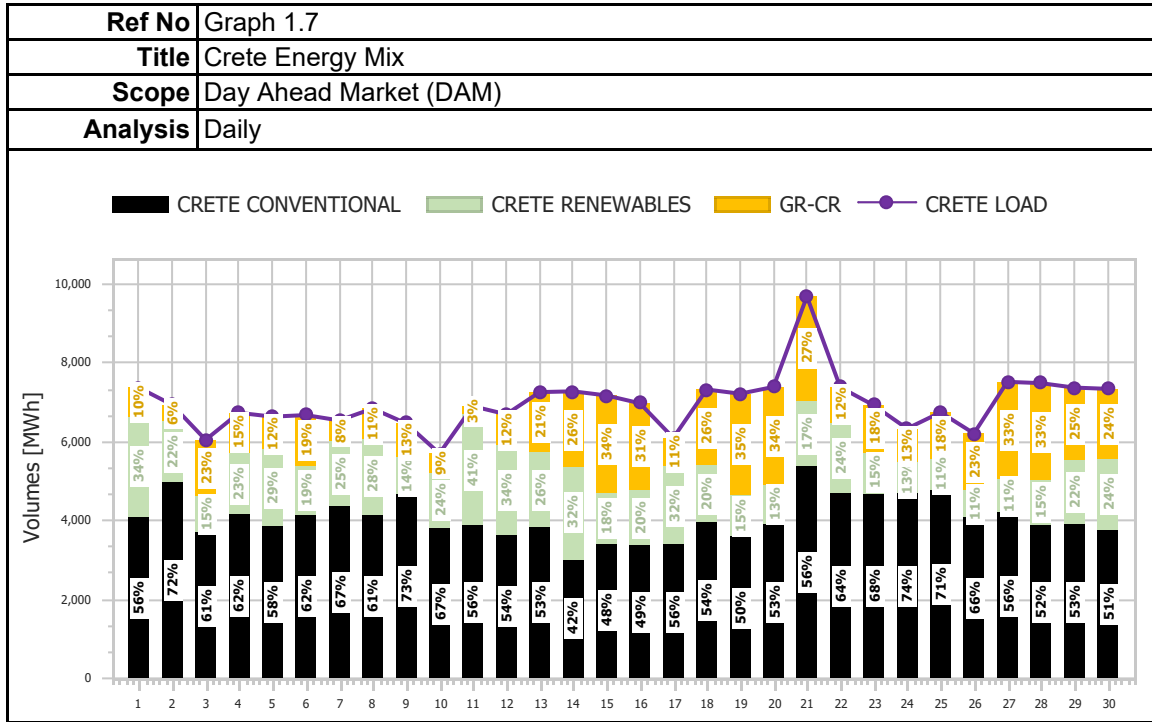


<b>Ref No</b>	Graph 1.5
<b>Title</b>	Energy Mix - SELL
<b>Scope</b>	Day Ahead Market (DAM)
<b>Analysis</b>	Daily

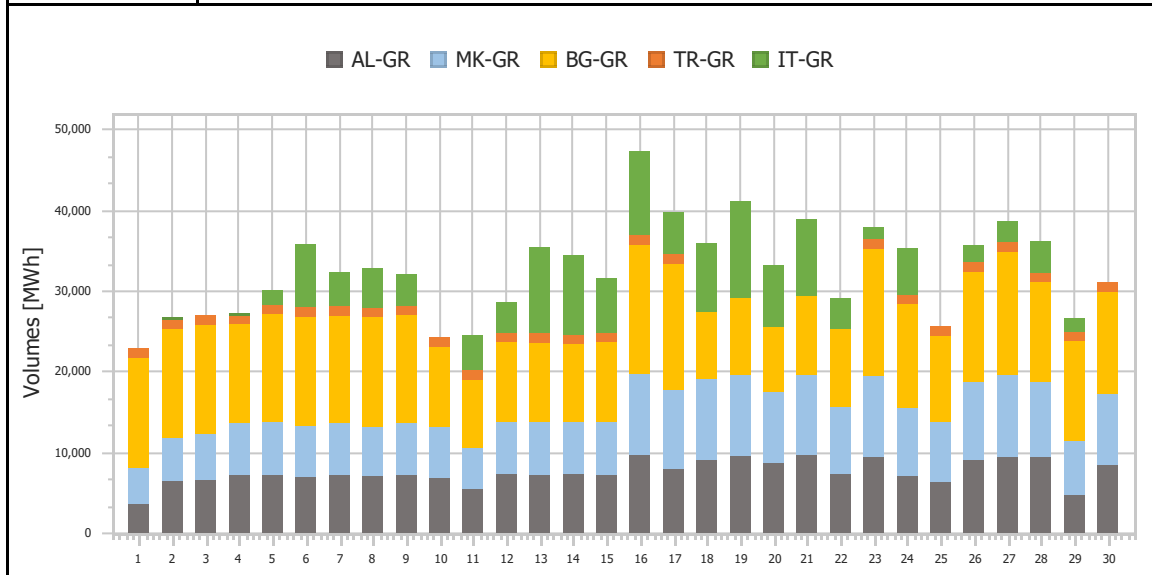


<b>Ref No</b>	Graph 1.6
<b>Title</b>	Energy Mix - BUY
<b>Scope</b>	Day Ahead Market (DAM)
<b>Analysis</b>	Daily

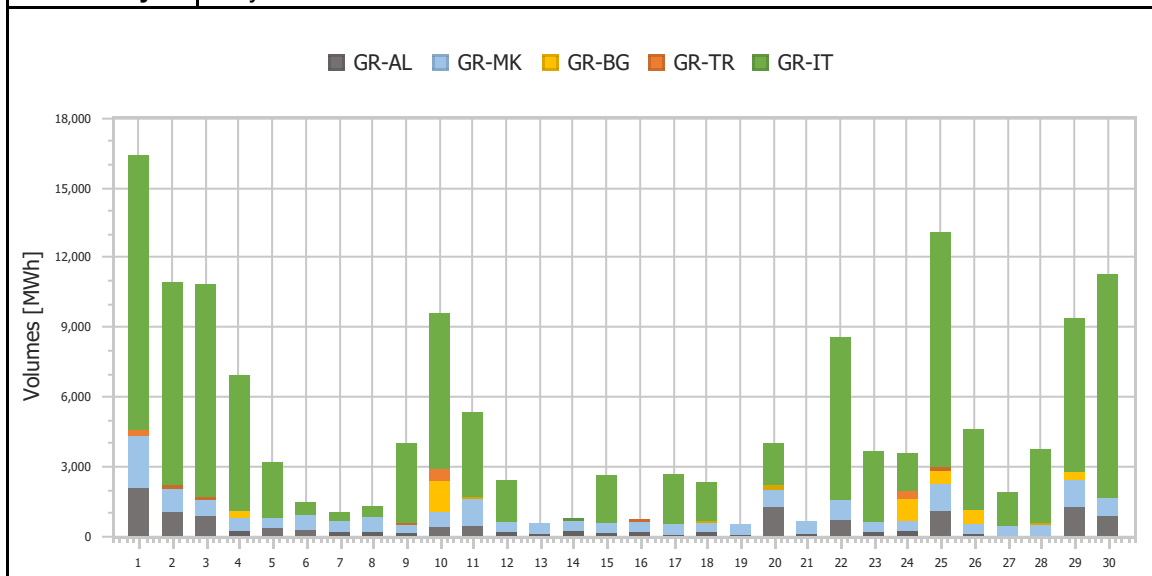




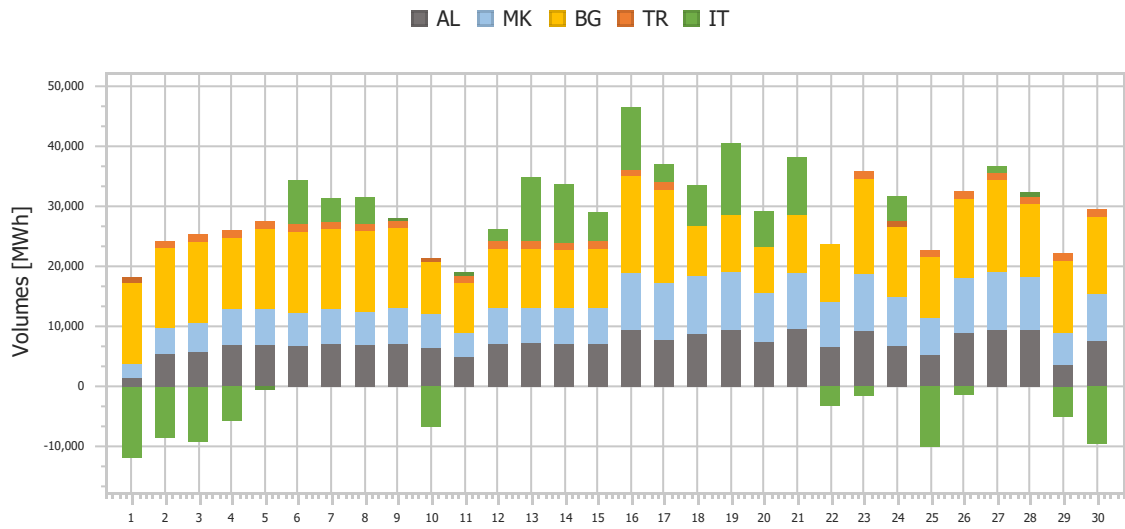
<b>Ref No</b>	Graph 1.9
<b>Title</b>	Imports per Border
<b>Scope</b>	Day Ahead Market (DAM)
<b>Analysis</b>	Daily



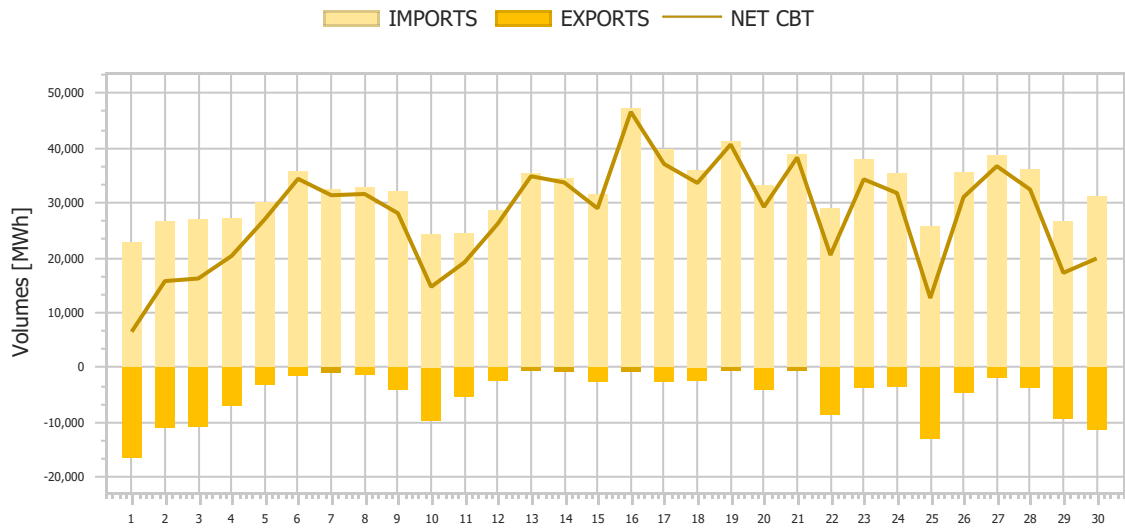
<b>Ref No</b>	Graph 1.10
<b>Title</b>	Exports per Border
<b>Scope</b>	Day Ahead Market (DAM)
<b>Analysis</b>	Daily



<b>Ref No</b>	Graph 1.11
<b>Title</b>	Net Imports per Border
<b>Scope</b>	Day Ahead Market (DAM)
<b>Analysis</b>	Daily

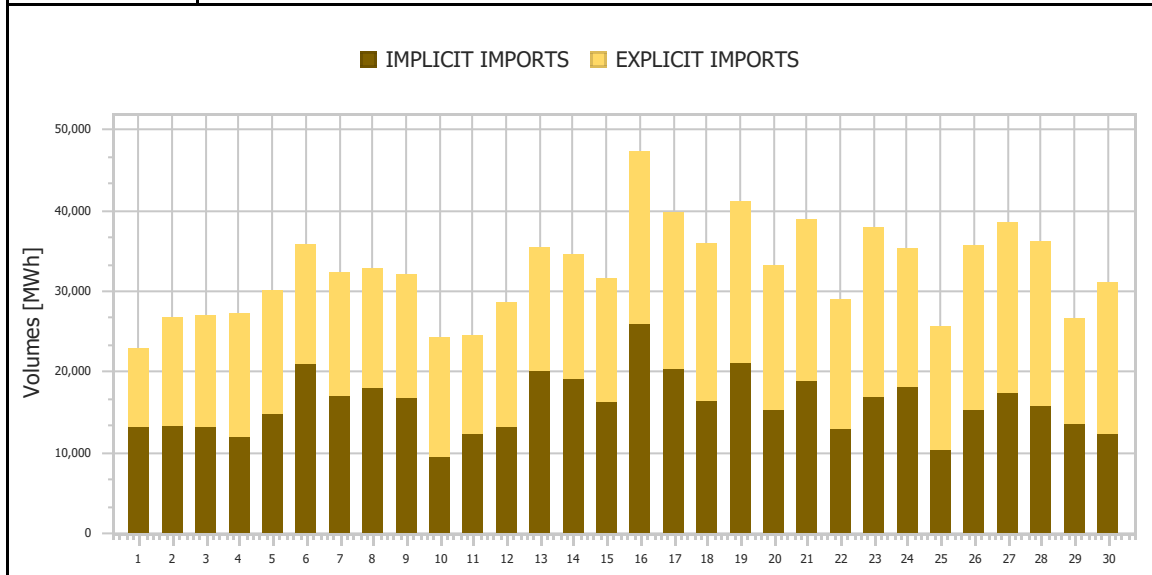


<b>Ref No</b>	Graph 1.12
<b>Title</b>	Total Imports & Exports
<b>Scope</b>	Day Ahead Market (DAM)
<b>Analysis</b>	Daily

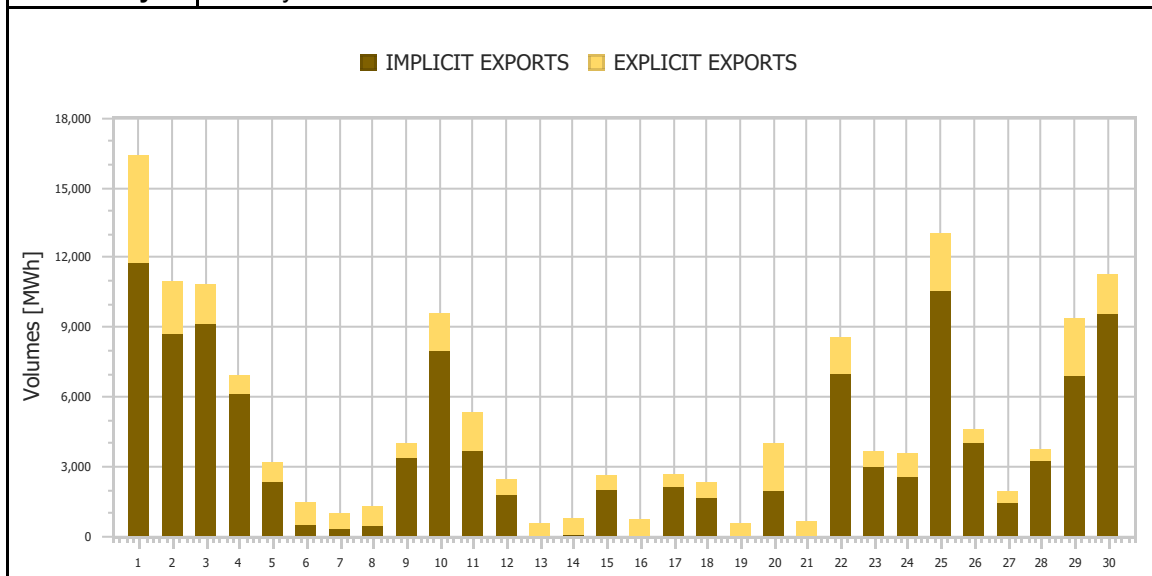




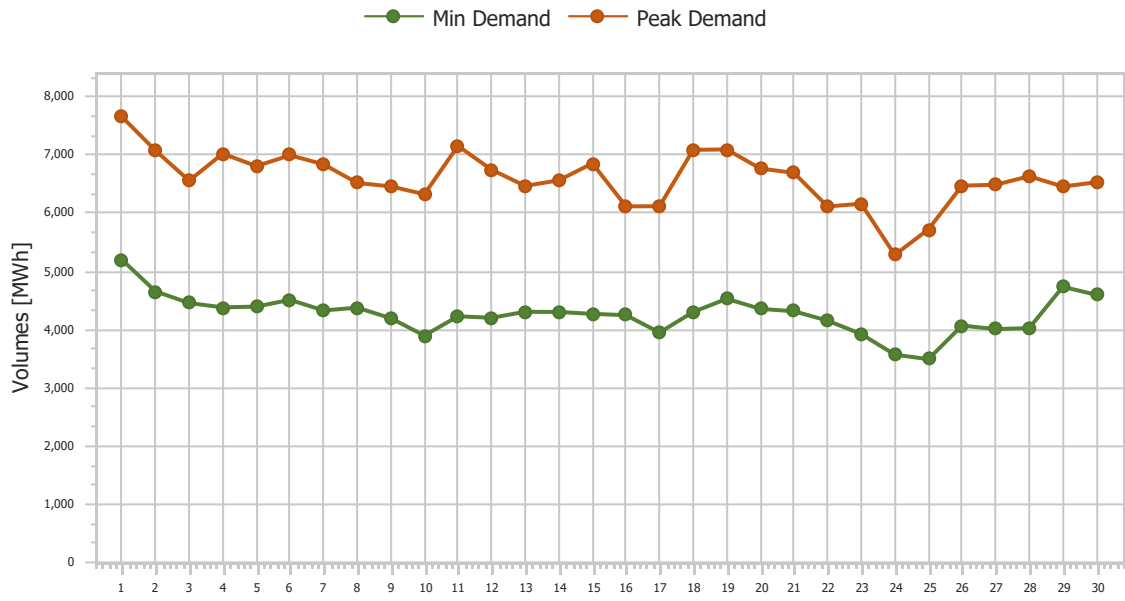
<b>Ref No</b>	Graph 1.13
<b>Title</b>	Imports (Implicit/Explicit)
<b>Scope</b>	Day Ahead Market (DAM)
<b>Analysis</b>	Daily



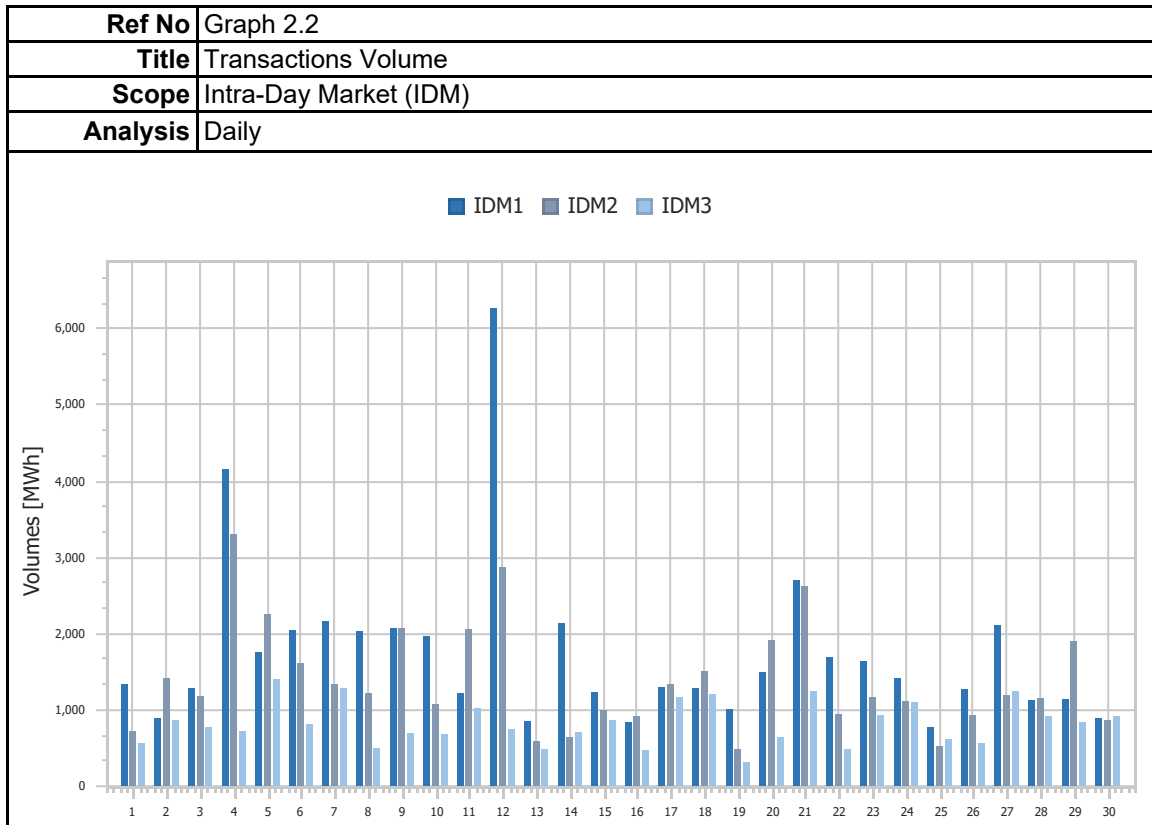
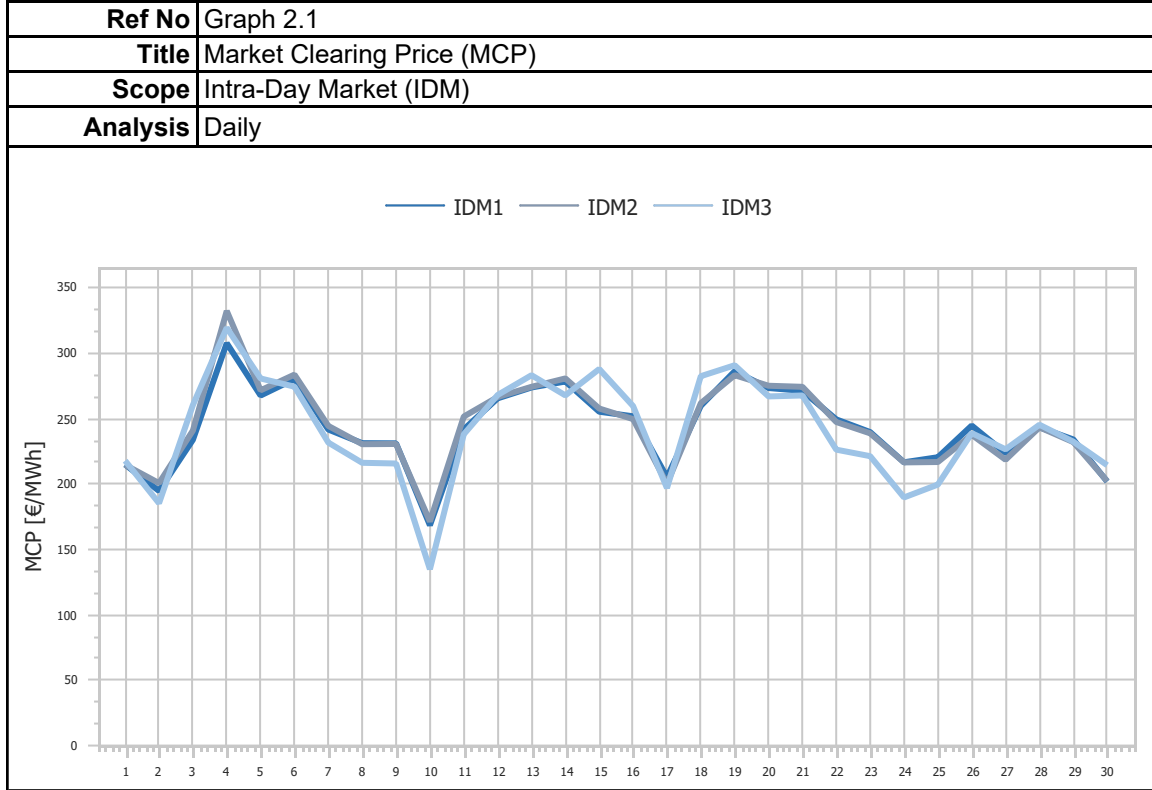
<b>Ref No</b>	Graph 1.14
<b>Title</b>	Exports (Implicit/Explicit)
<b>Scope</b>	Day Ahead Market (DAM)
<b>Analysis</b>	Monthly

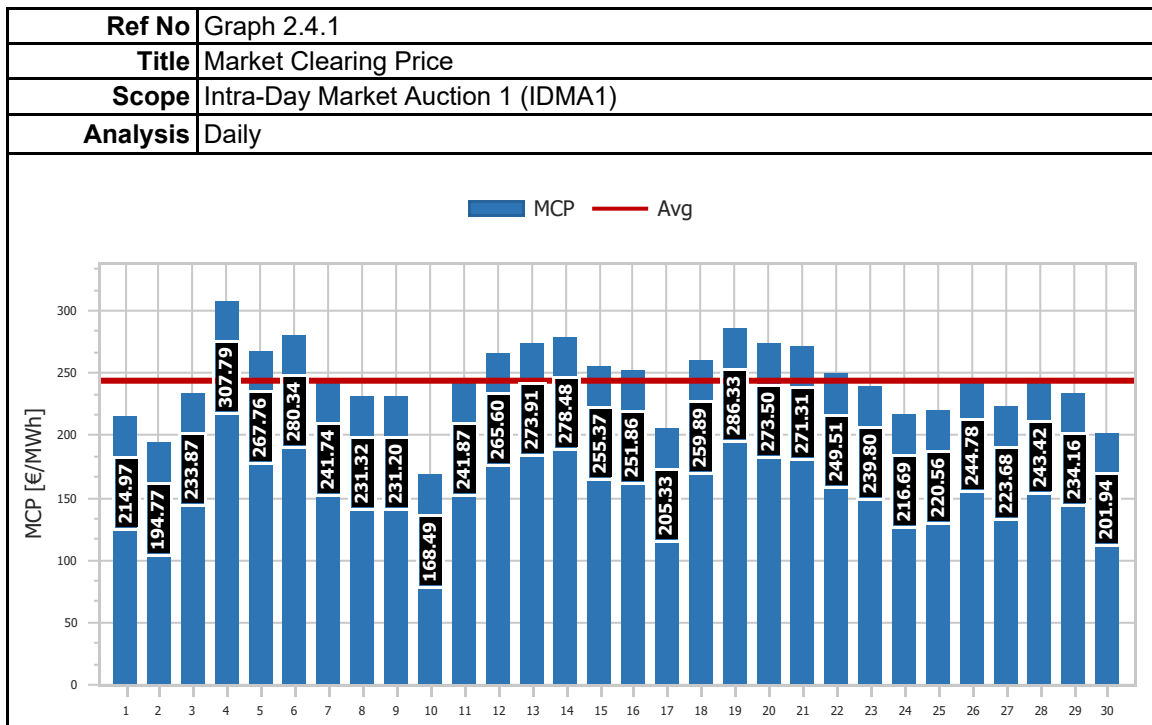
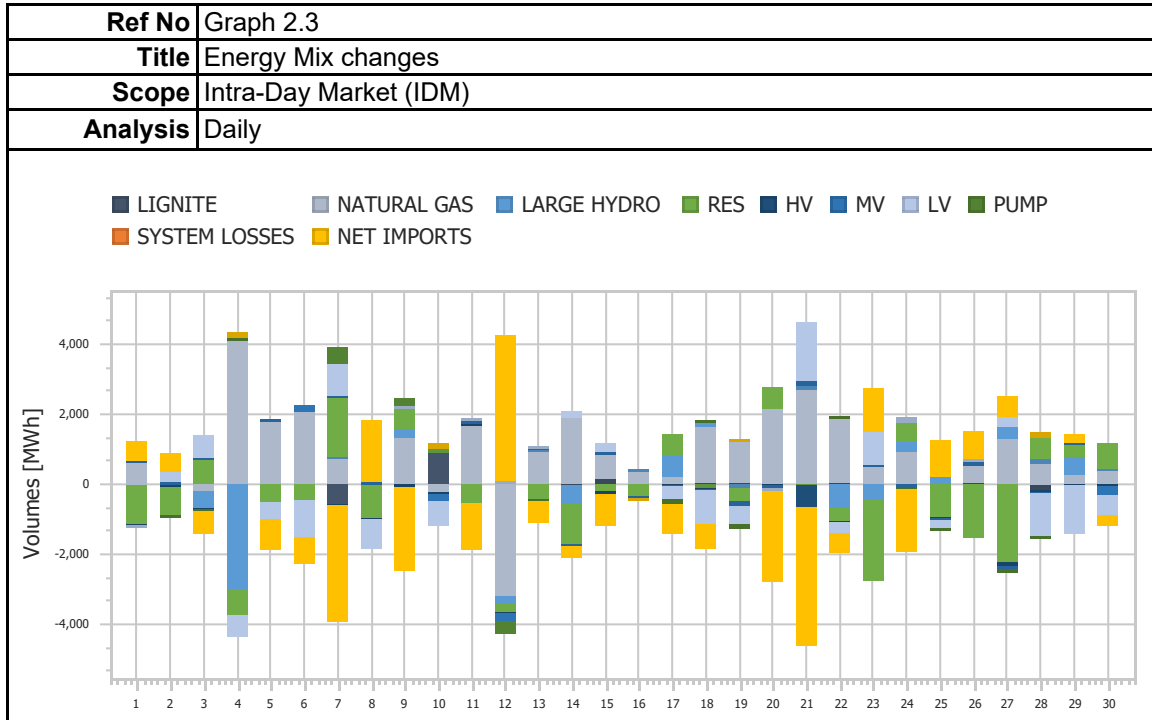


<b>Ref No</b>	Graph 1.15
<b>Title</b>	Min & Peak Demand
<b>Scope</b>	Day Ahead Market (DAM)
<b>Analysis</b>	Daily

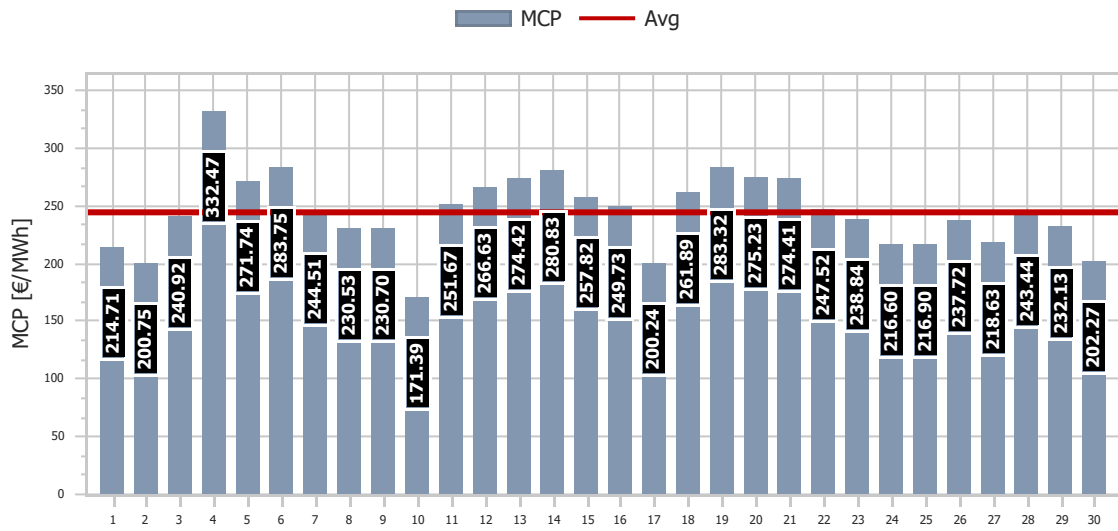


## 2. Intra-Day Market (IDM)

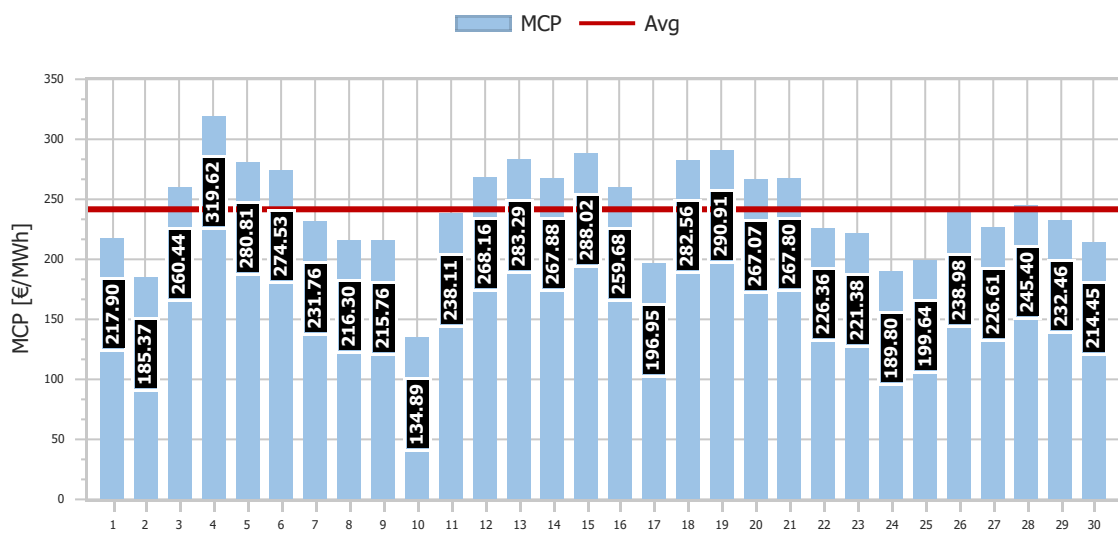


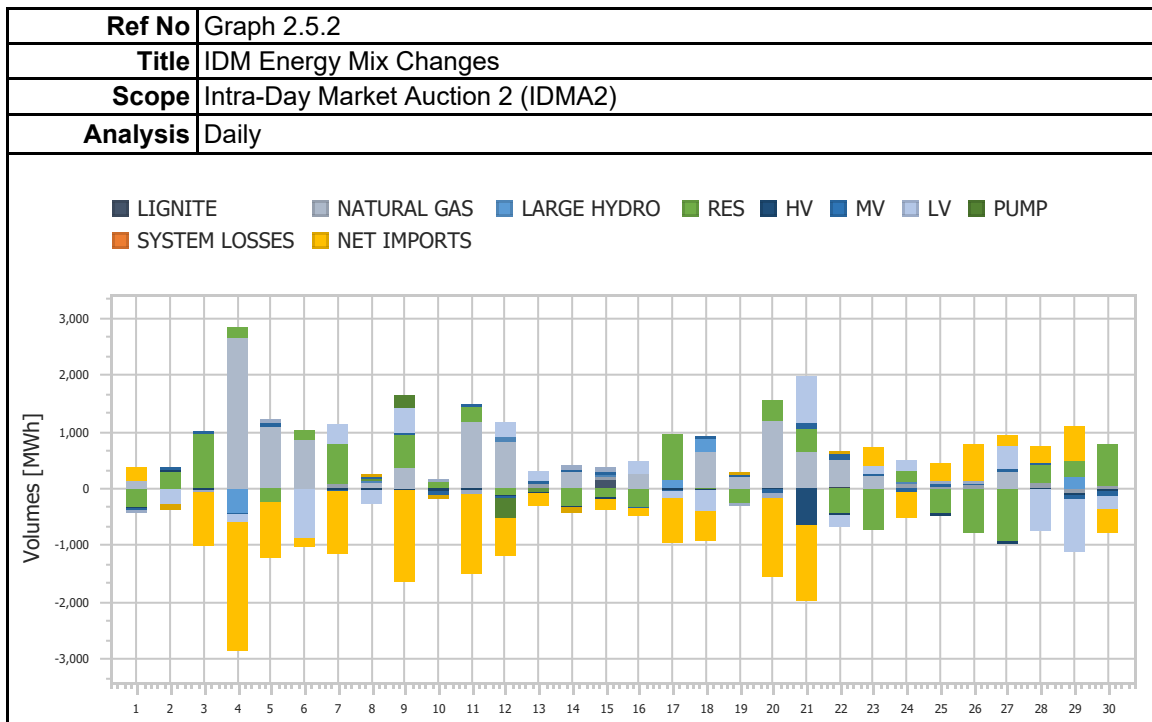
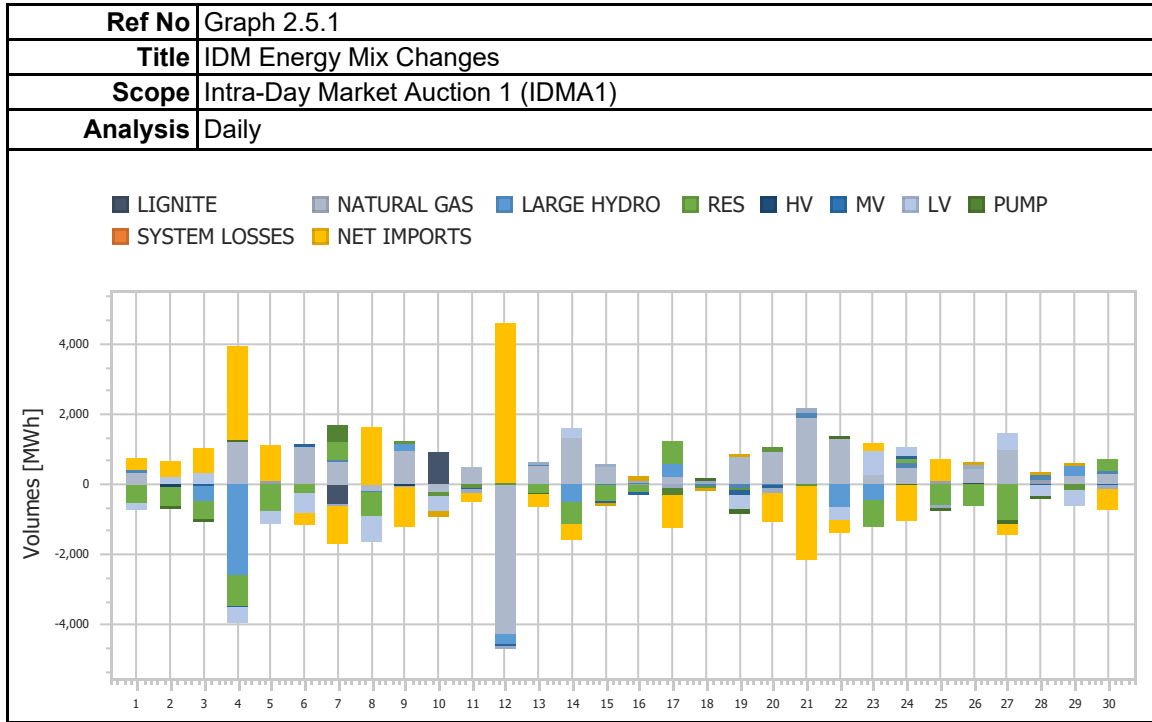


<b>Ref No</b>	Graph 2.4.2
<b>Title</b>	Market Clearing Price
<b>Scope</b>	Intra-Day Market Auction 2 (IDMA2)
<b>Analysis</b>	Daily

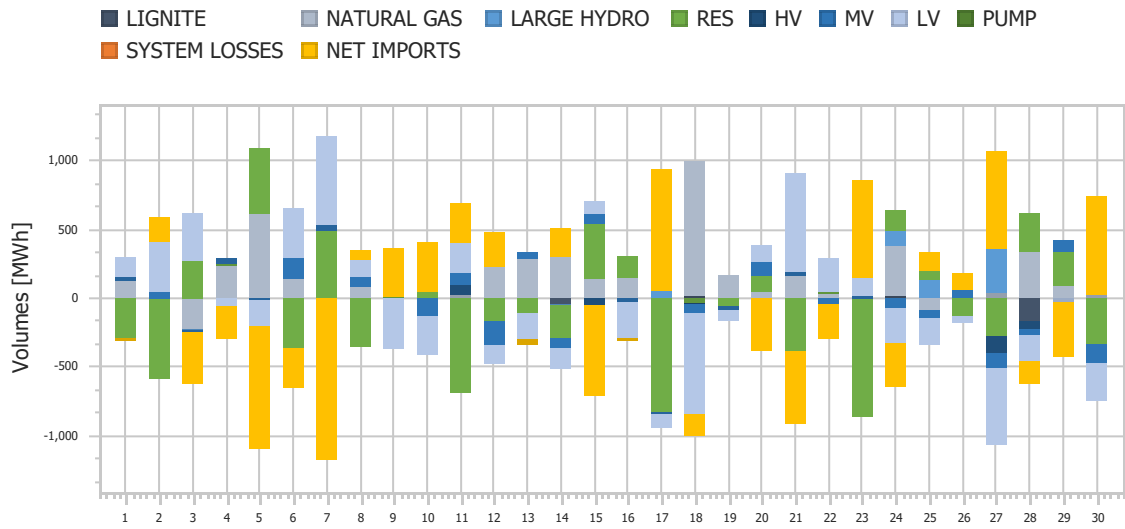


<b>Ref No</b>	Graph 2.4.3
<b>Title</b>	Market Clearing Price
<b>Scope</b>	Intra-Day Market Auction 3 (IDMA3)
<b>Analysis</b>	Daily

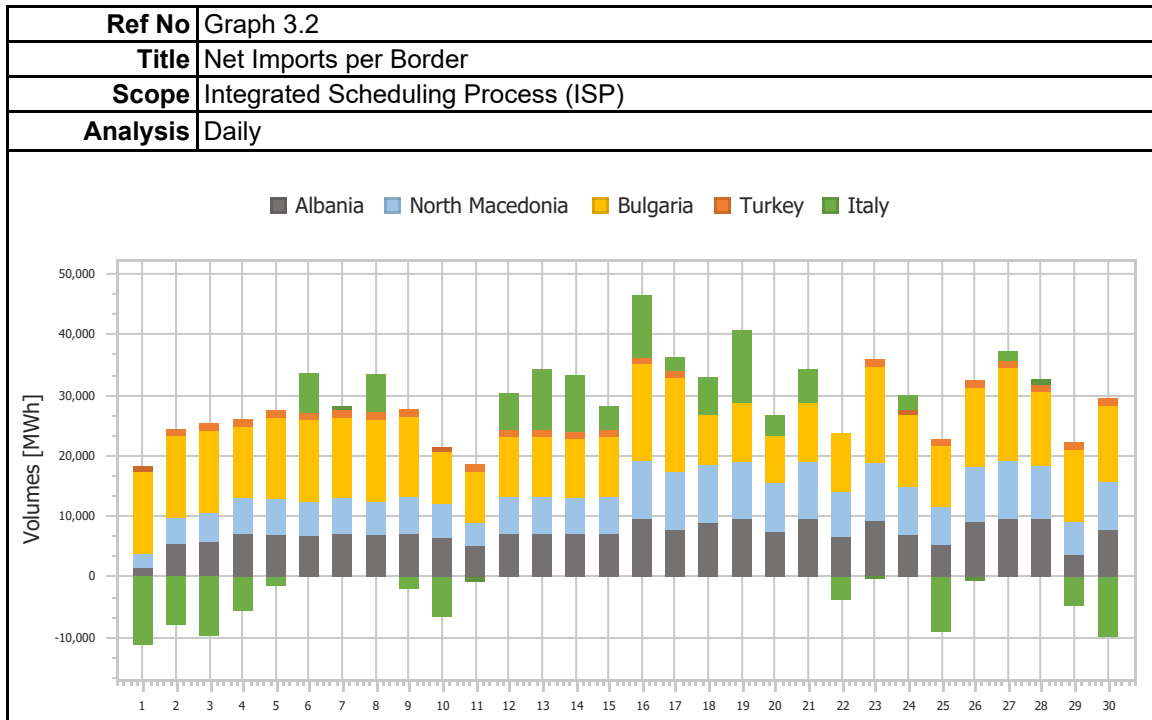
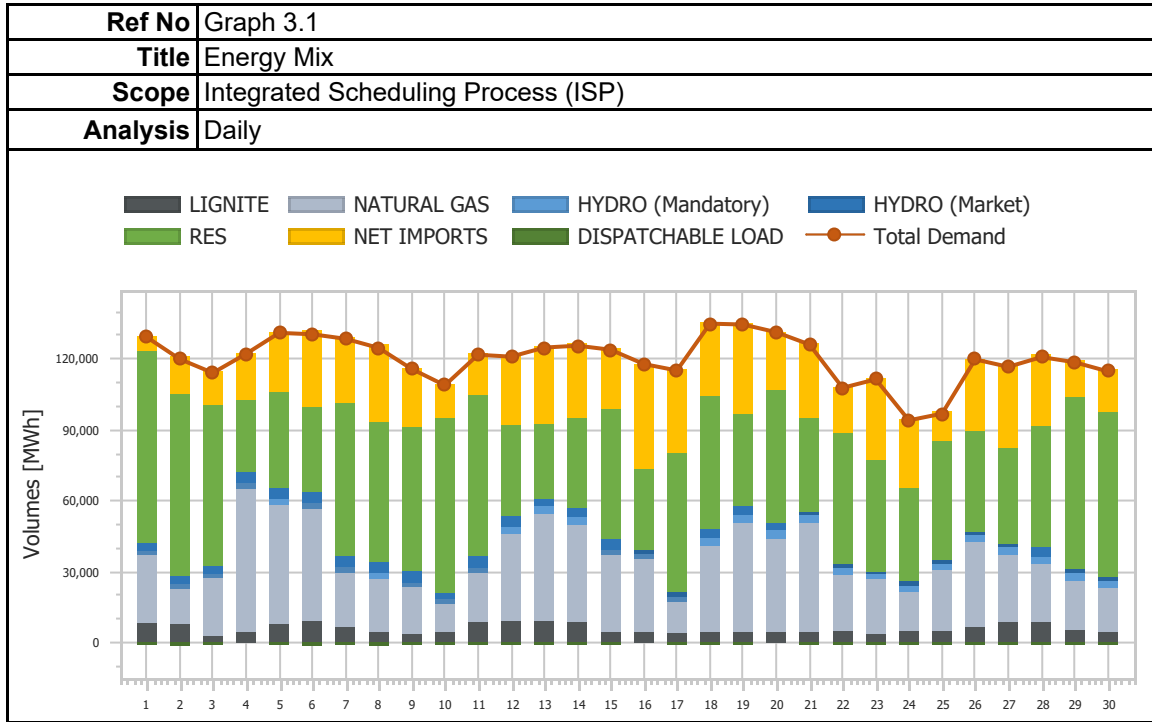




<b>Ref No</b>	Graph 2.5.3
<b>Title</b>	IDM Energy Mix Changes
<b>Scope</b>	Intra-Day Market Auction 3 (IDMA3)
<b>Analysis</b>	Daily

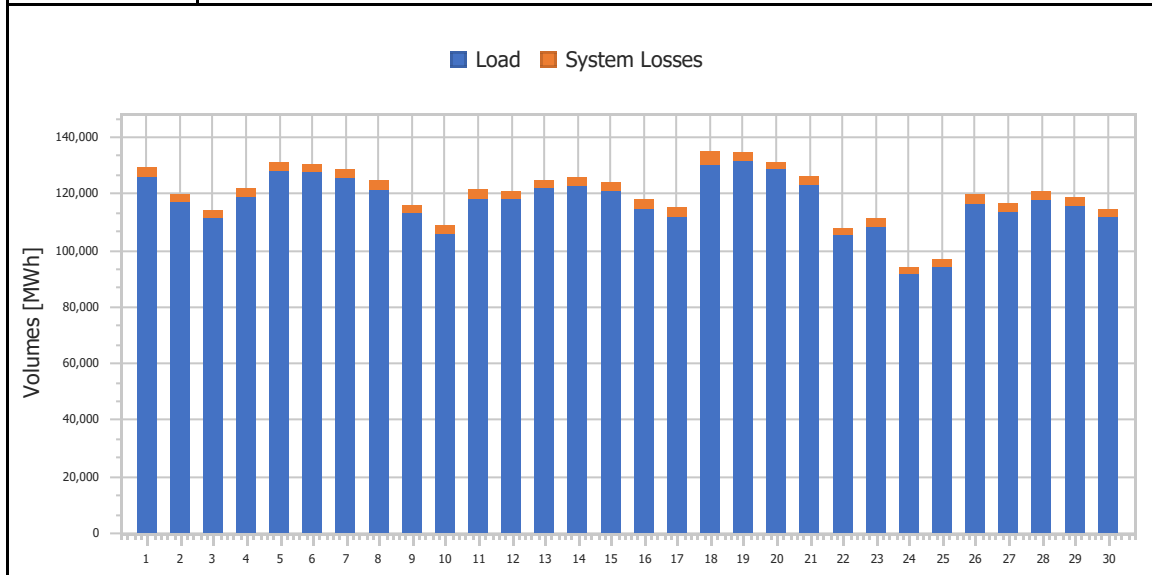


### 3. Integrated Scheduling Process (ISP)

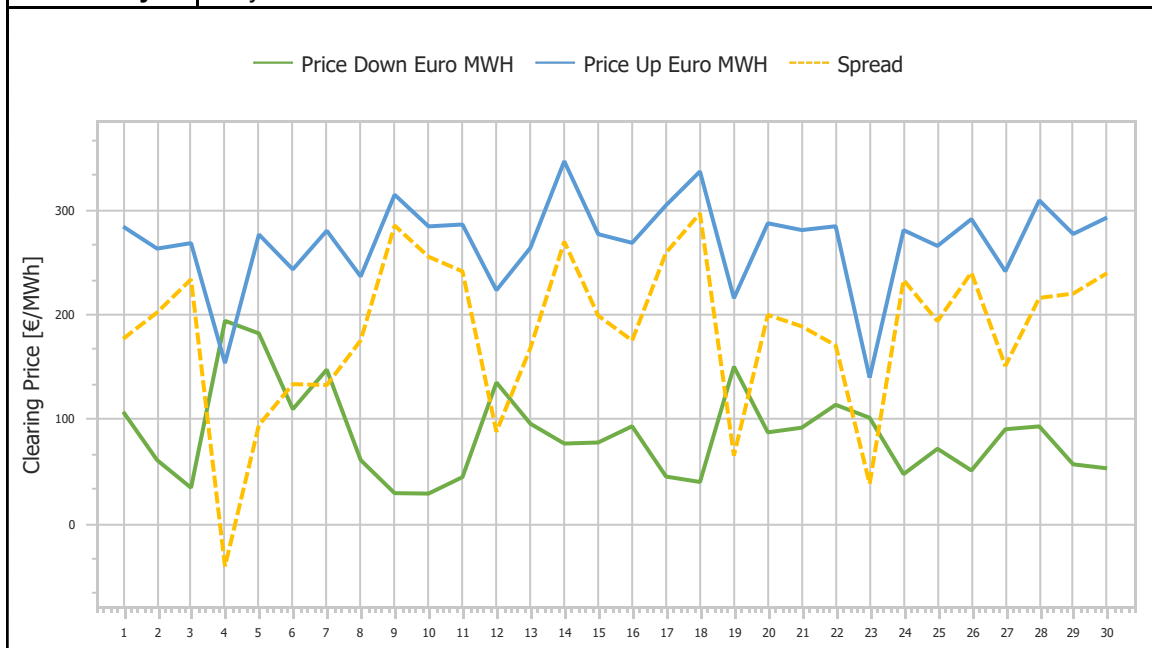




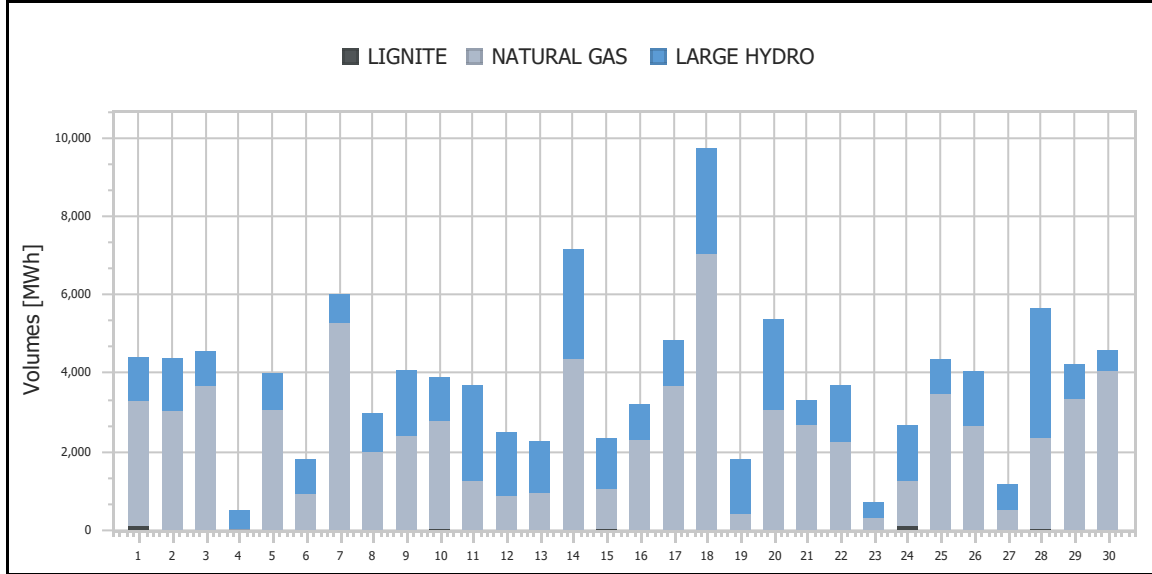
<b>Ref No</b>	Graph 3.3
<b>Title</b>	Demand & System Losses
<b>Scope</b>	Integrated Scheduling Process (ISP)
<b>Analysis</b>	Daily



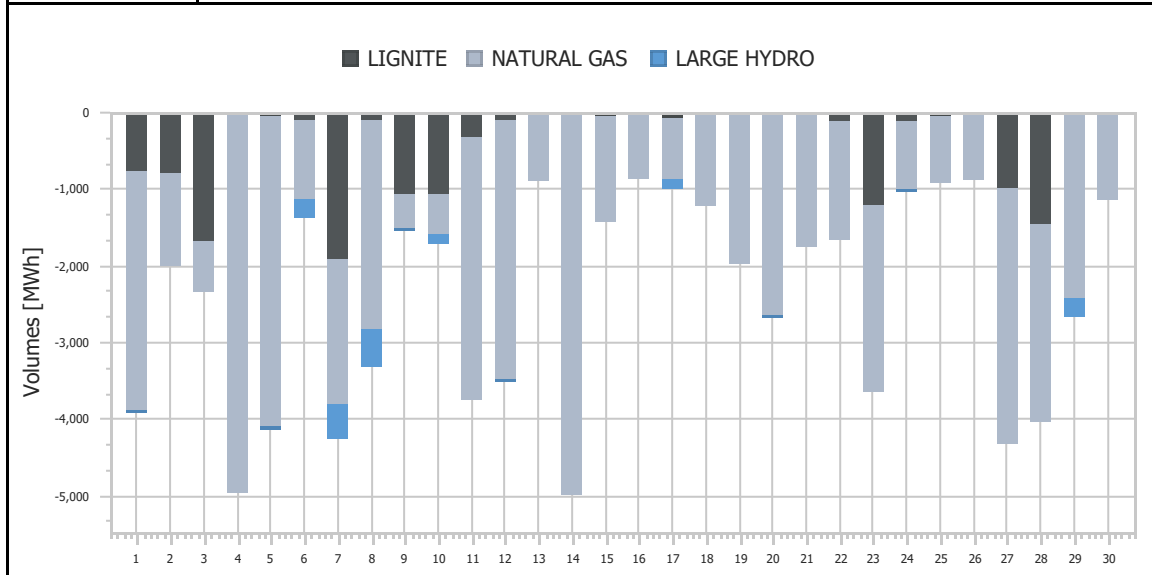
<b>Ref No</b>	Graph 3.4
<b>Title</b>	Clearing Prices
<b>Scope</b>	Integrated Scheduling Process (ISP)
<b>Analysis</b>	Daily



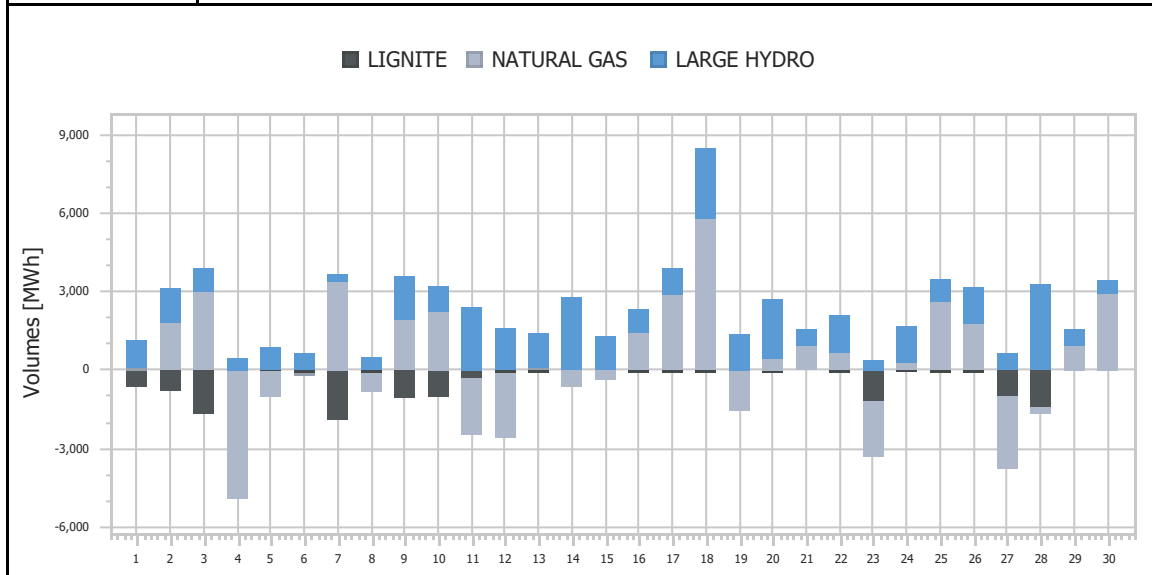
<b>Ref No</b>	Graph 3.5
<b>Title</b>	Upward Activated Balancing energy
<b>Scope</b>	Integrated Scheduling Process (ISP)
<b>Analysis</b>	Daily



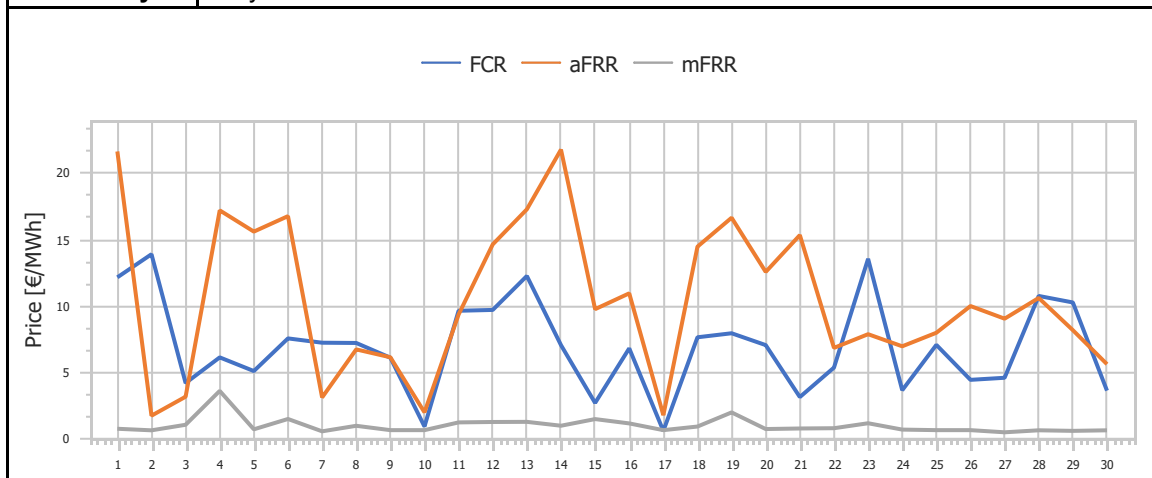
<b>Ref No</b>	Graph 3.6
<b>Title</b>	Downward Activated Balancing energy
<b>Scope</b>	Integrated Scheduling Process (ISP)
<b>Analysis</b>	Daily



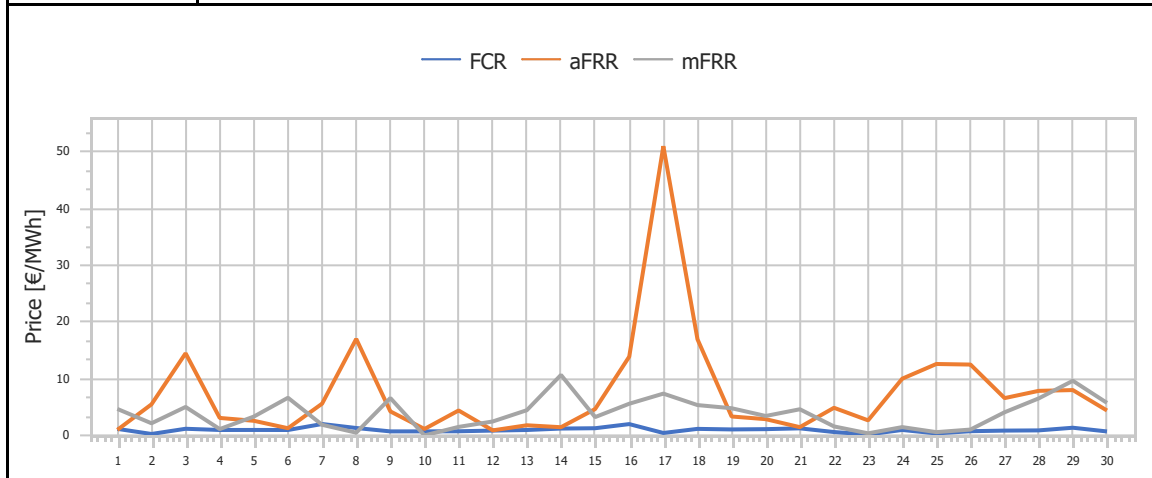
<b>Ref No</b>	Graph 3.7
<b>Title</b>	Net Activated Balancing energy
<b>Scope</b>	Integrated Scheduling Process (ISP)
<b>Analysis</b>	Daily



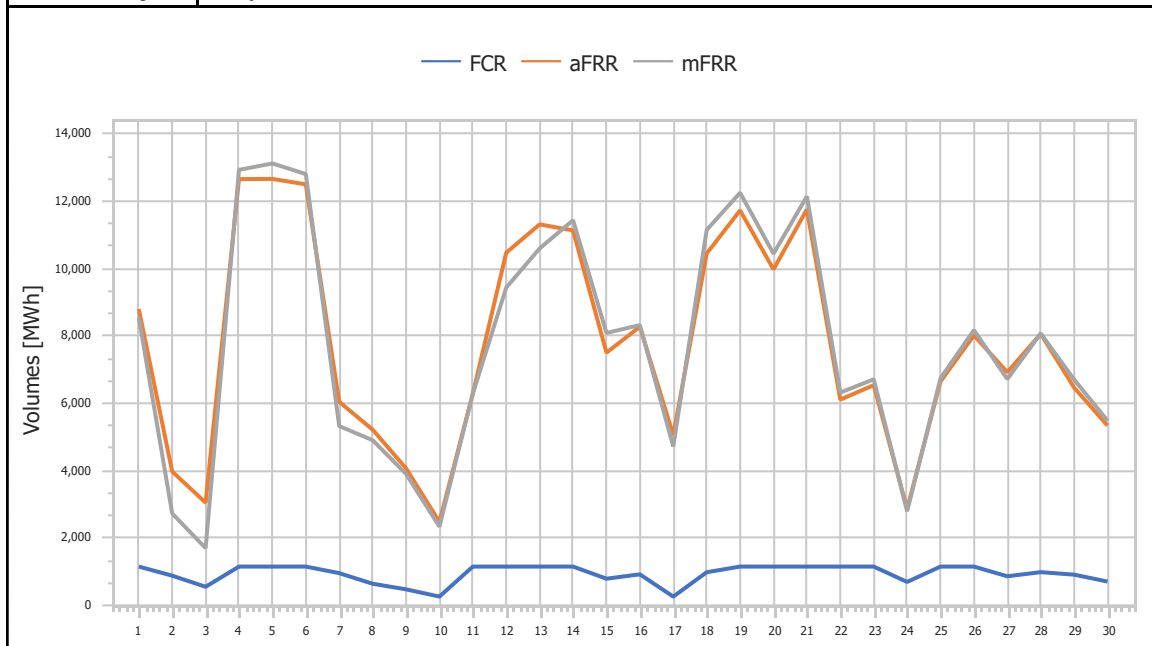
<b>Ref No</b>	Graph 3.8
<b>Title</b>	Upward Capacity Reserves Prices
<b>Scope</b>	Integrated Scheduling Process (ISP)
<b>Analysis</b>	Daily



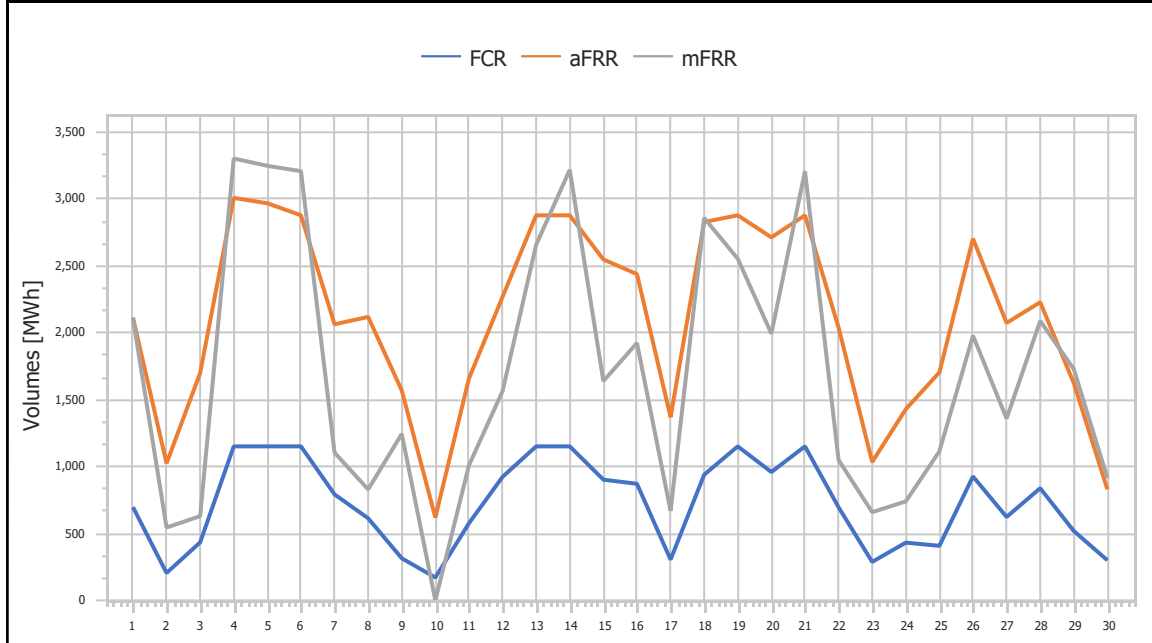
<b>Ref No</b>	Graph 3.9
<b>Title</b>	Downward Capacity Reserves Prices
<b>Scope</b>	Integrated Scheduling Process (ISP)
<b>Analysis</b>	Daily



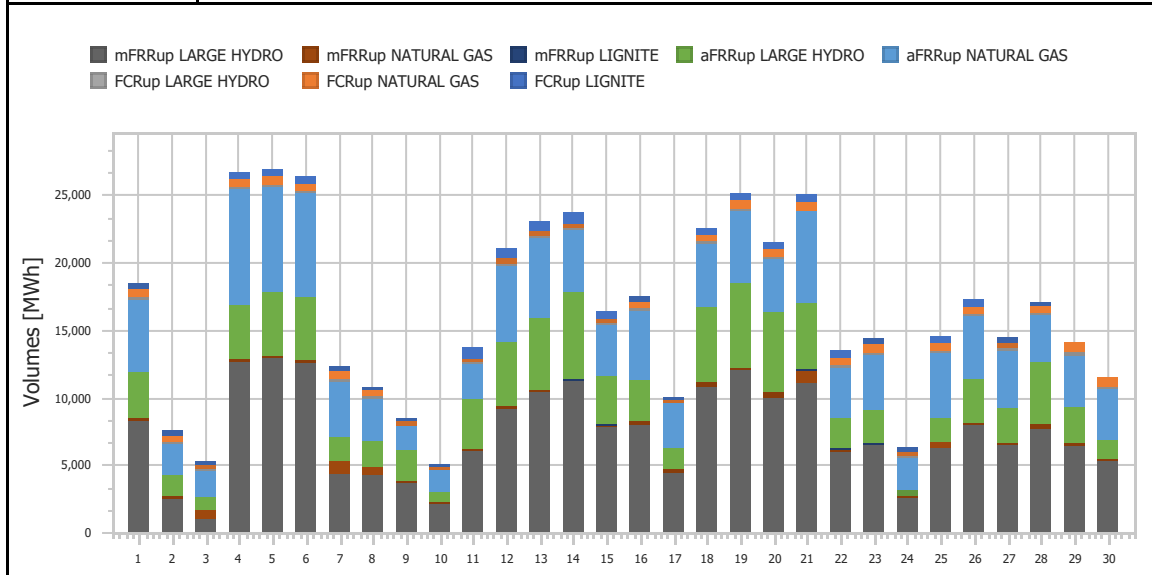
<b>Ref No</b>	Graph 3.10
<b>Title</b>	Upward Capacity Reserves Volumes
<b>Scope</b>	Integrated Scheduling Process (ISP)
<b>Analysis</b>	Daily



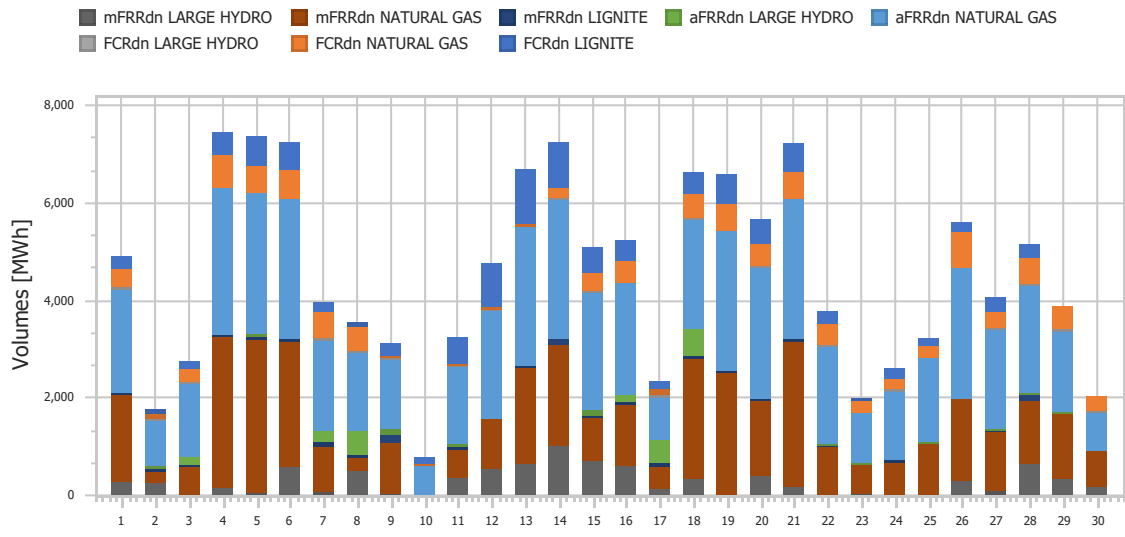
<b>Ref No</b>	Graph 3.11
<b>Title</b>	Downward Capacity Reserves Volumes
<b>Scope</b>	Integrated Scheduling Process (ISP)
<b>Analysis</b>	Daily



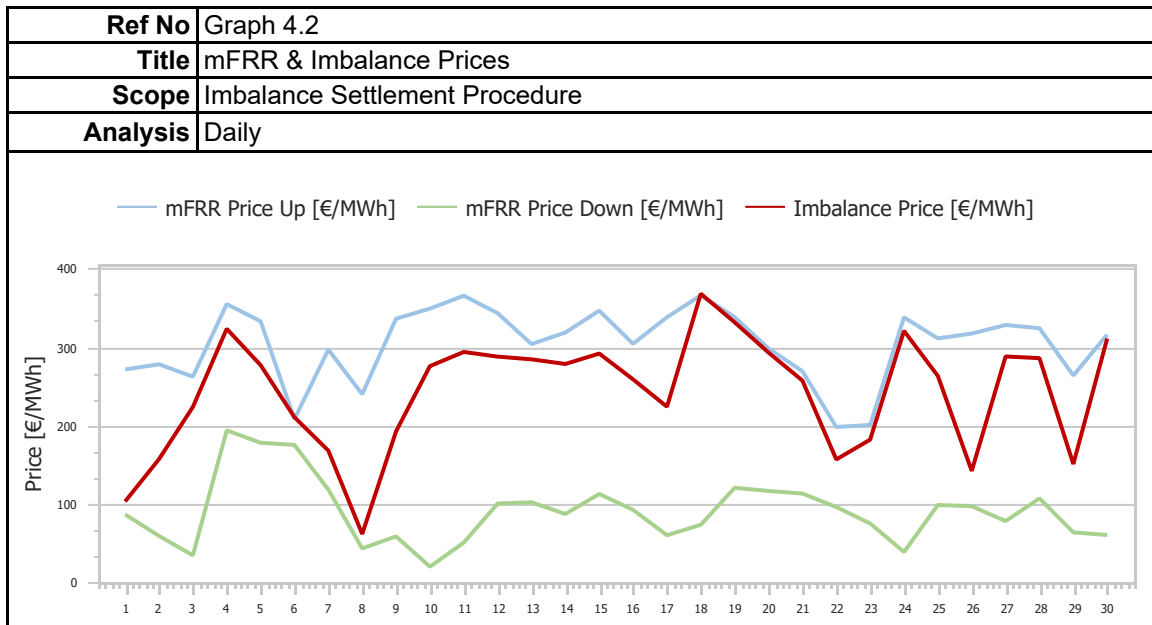
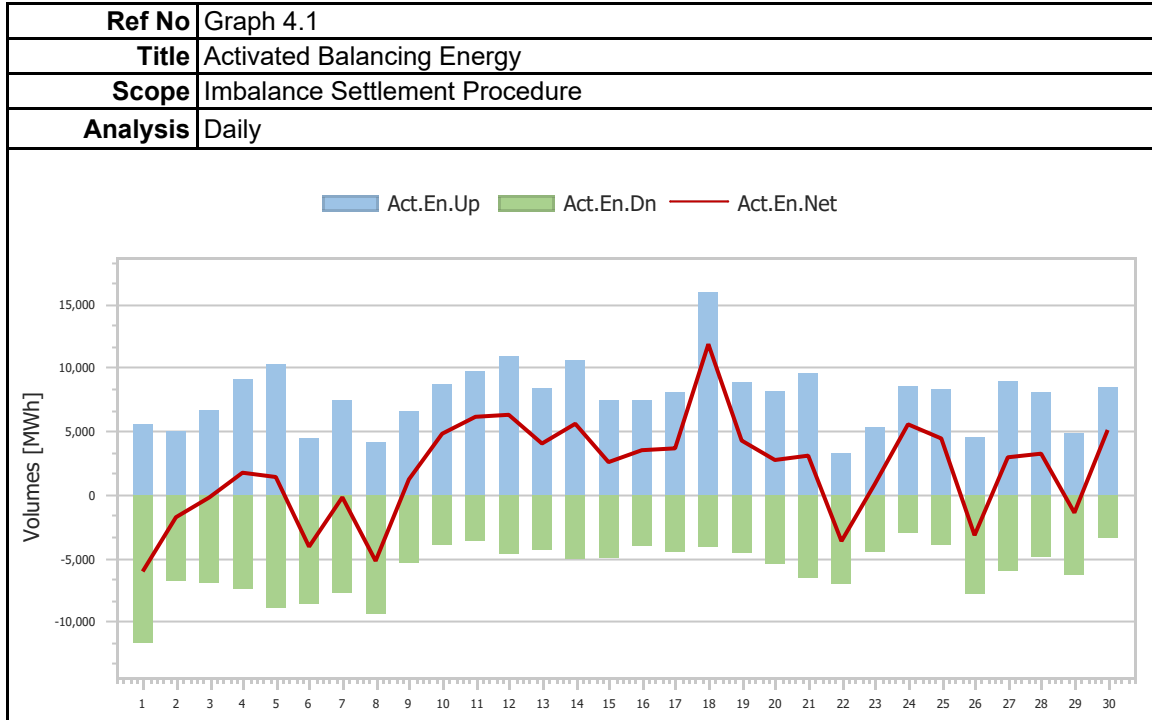
<b>Ref No</b>	Graph 3.12
<b>Title</b>	Upward Capacity Reserves Volumes per Technology
<b>Scope</b>	Integrated Scheduling Process (ISP)
<b>Analysis</b>	Daily



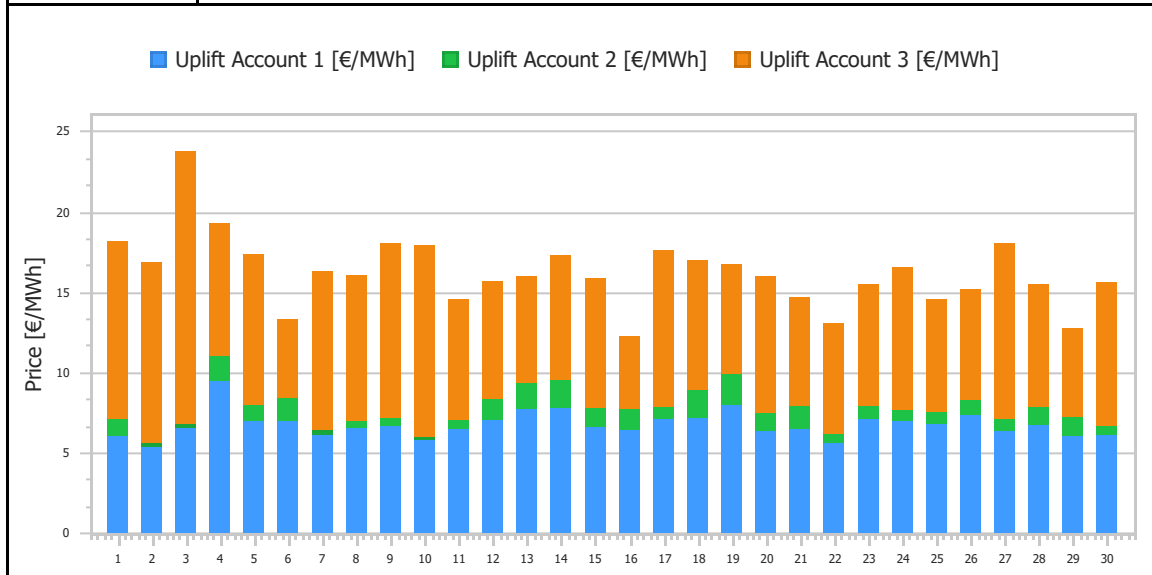
<b>Ref No</b>	Graph 3.13
<b>Title</b>	Downward Capacity Reserves Quantities per Type & Technology
<b>Scope</b>	Integrated Scheduling Process (ISP)
<b>Analysis</b>	Daily



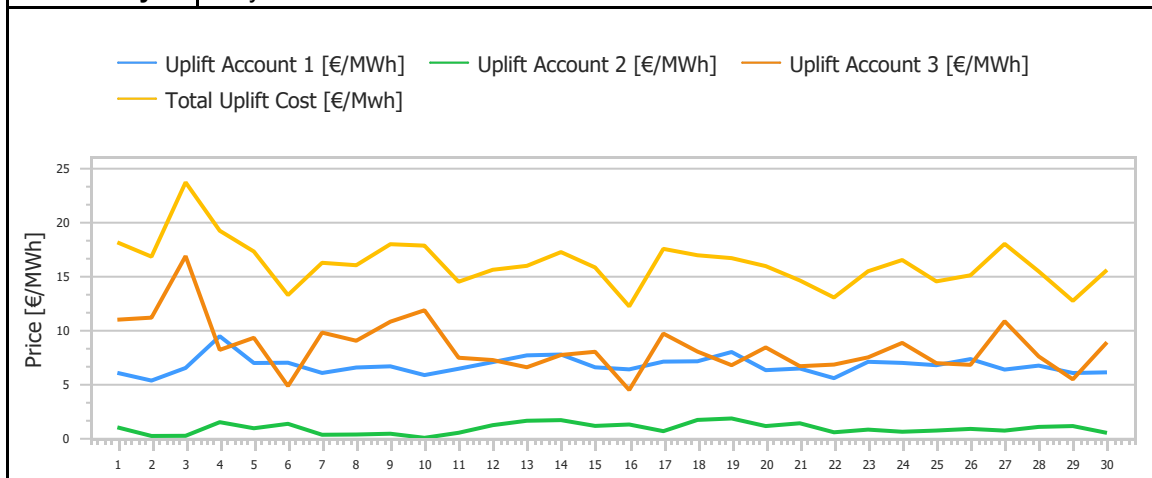
### 4. Imbalance Settlement Procedure



<b>Ref No</b>	Graph 4.3
<b>Title</b>	Uplift Accounts Cost
<b>Scope</b>	Imbalance Settlement Procedure
<b>Analysis</b>	Daily

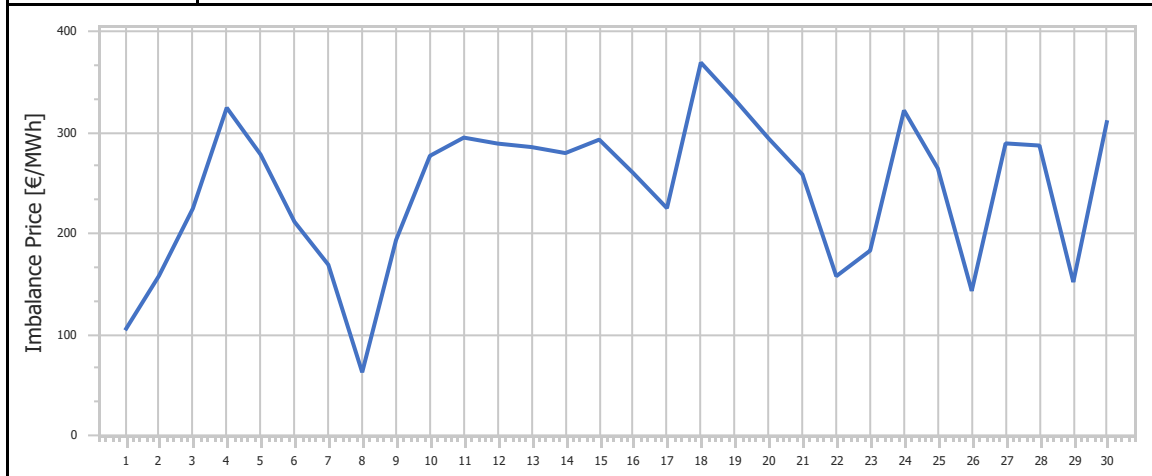


<b>Ref No</b>	Graph 4.4
<b>Title</b>	Uplift Accounts Cost
<b>Scope</b>	Imbalance Settlement Procedure
<b>Analysis</b>	Daily

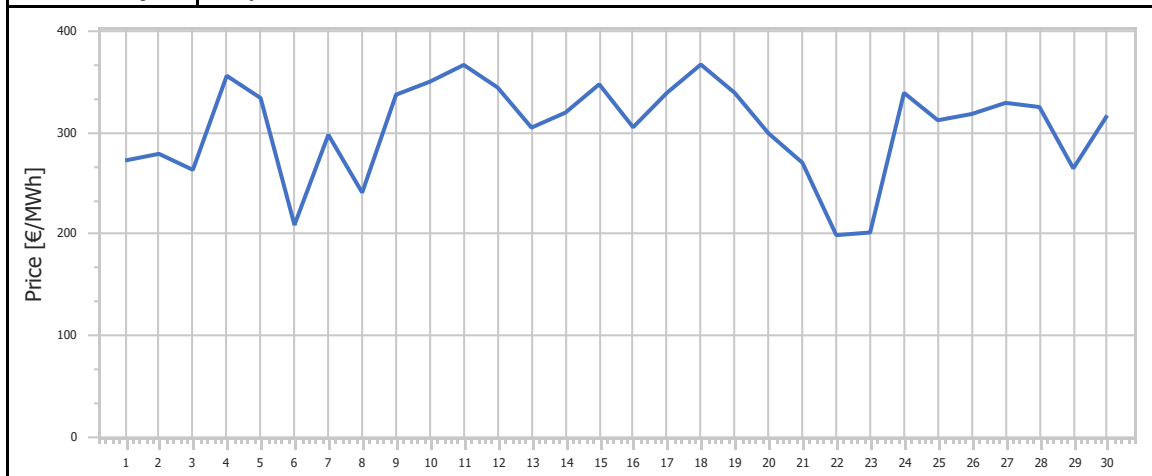




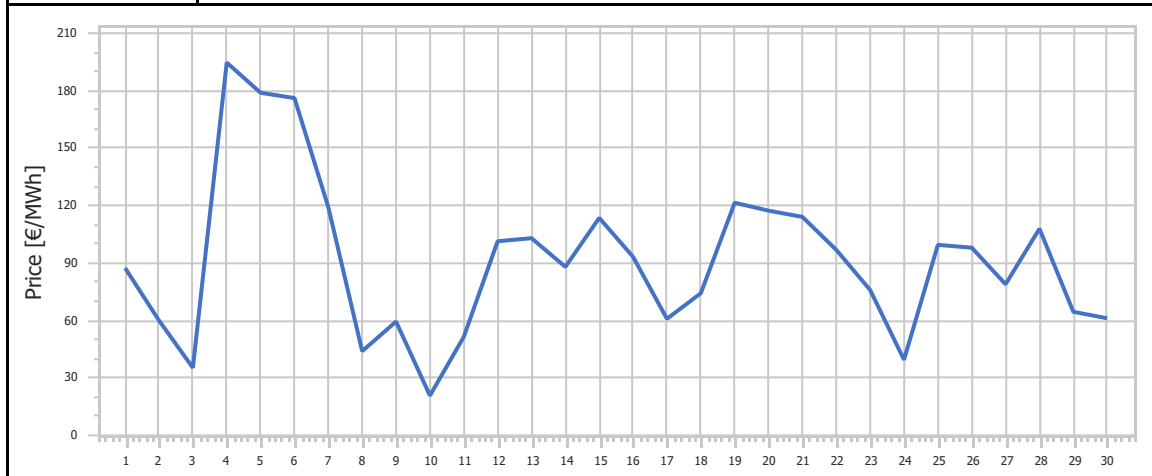
<b>Ref No</b>	Graph 4.5
<b>Title</b>	Imbalance Price
<b>Scope</b>	Imbalance Settlement Procedure
<b>Analysis</b>	Daily



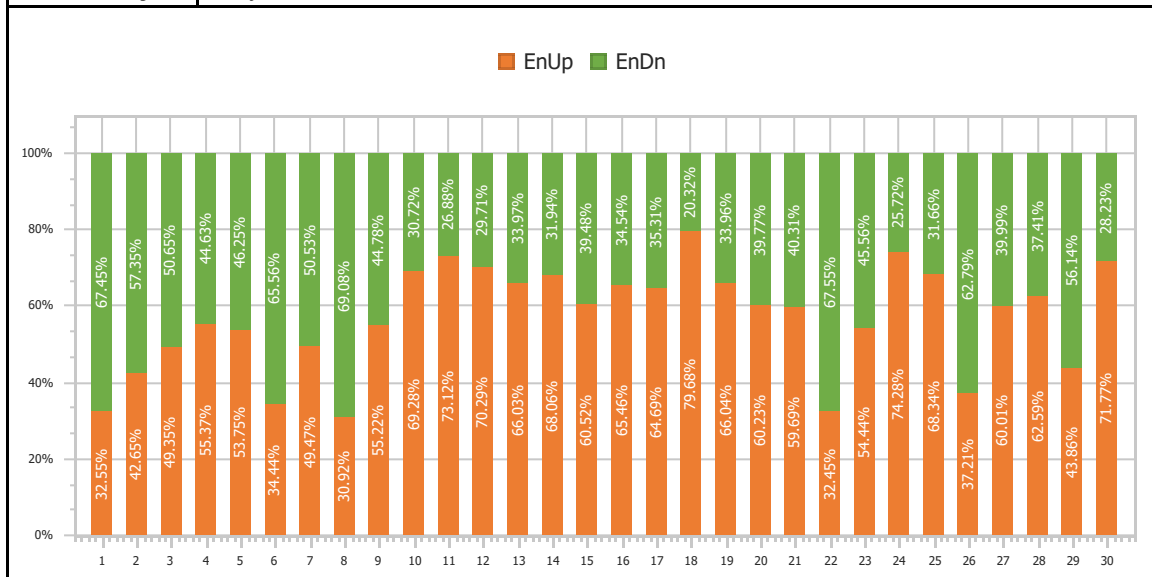
<b>Ref No</b>	Graph 4.6
<b>Title</b>	mFRR Up Price
<b>Scope</b>	Imbalance Settlement Procedure
<b>Analysis</b>	Daily



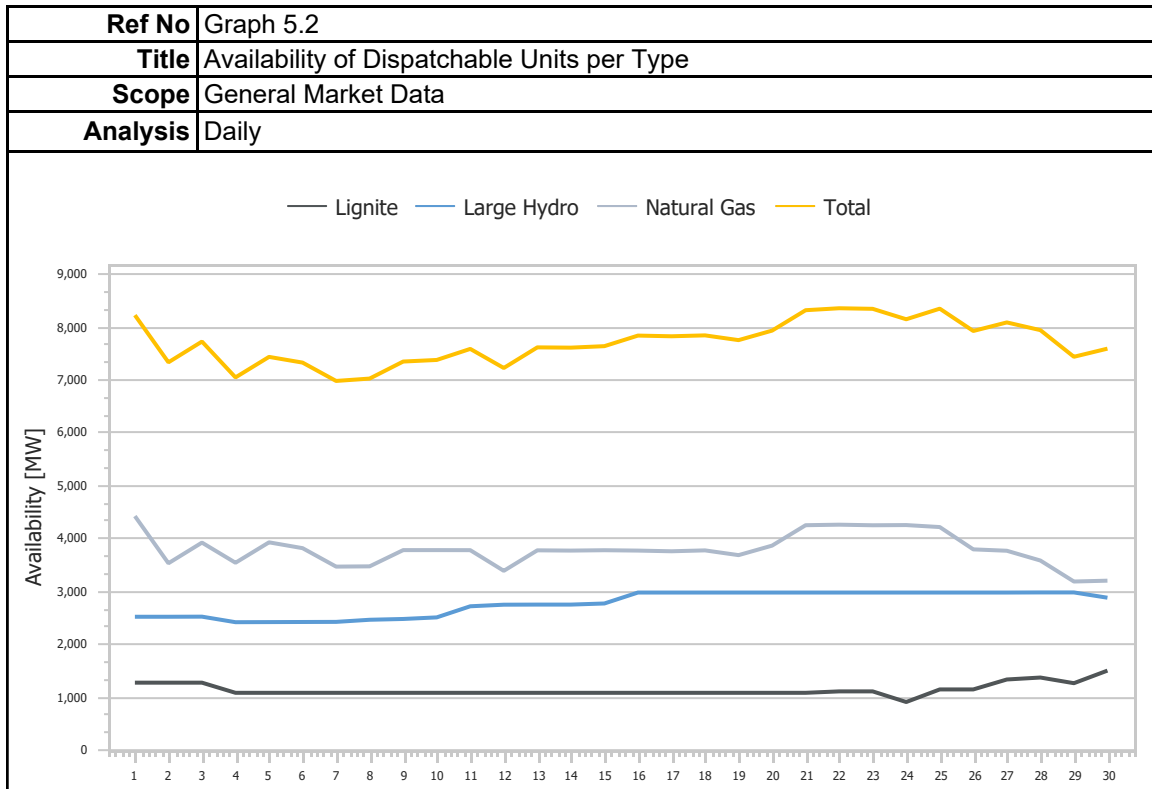
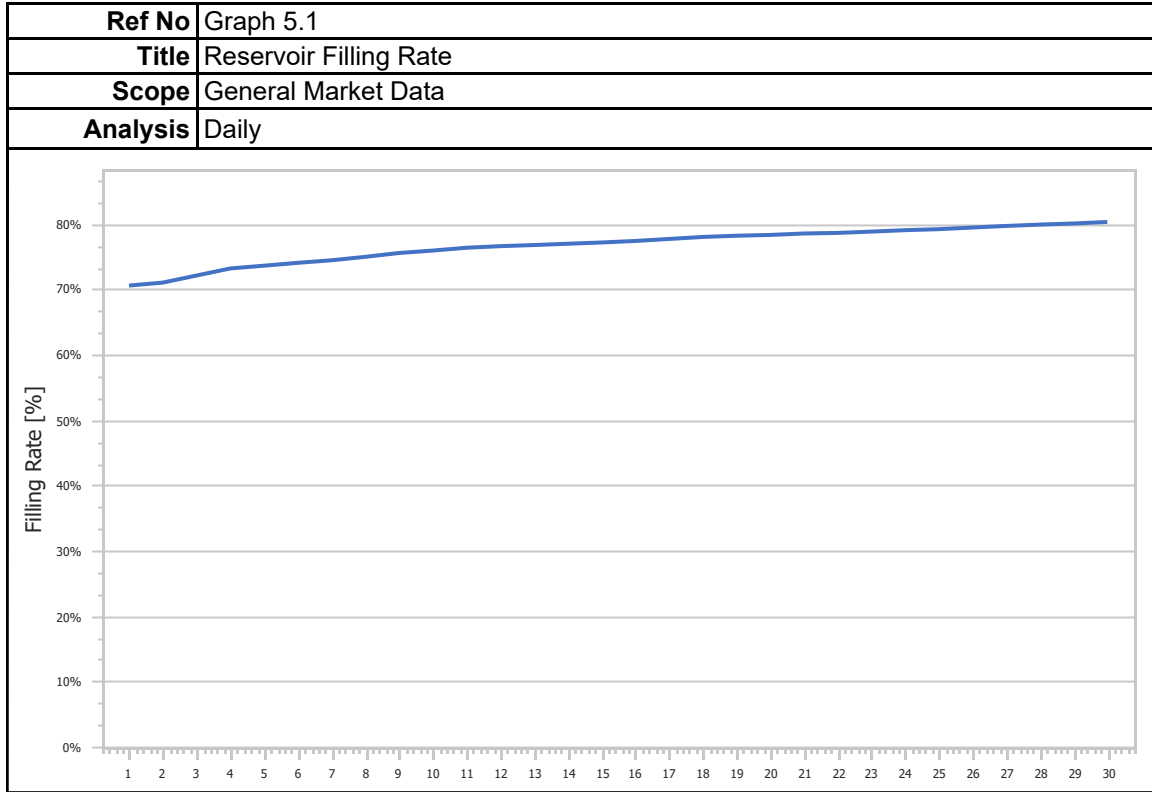
<b>Ref No</b>	Graph 4.7
<b>Title</b>	mFRR Down Price
<b>Scope</b>	Imbalance Settlement Procedure
<b>Analysis</b>	Daily



<b>Ref No</b>	Graph 4.8
<b>Title</b>	Balancing Energy Activation Direction
<b>Scope</b>	Imbalance Settlement Procedure
<b>Analysis</b>	Daily



### 5. General Market Data



## 1. Statistics

<b>Ref No</b>	Table 1.1			
<b>Title</b>	Market Shares per Aggregated Classification - SELL			
<b>Scope</b>	Day Ahead Market (DAM)			
<b>Analysis</b>	Monthly			
Classification	Quantity [MWh]	Share [%]	Value [EUR]	Share [%]
Lignite	192.221.138	4.83%	47,839,382.78€	4.85%
Crete Conventional	122,539.250	3.08%	30,765,625.33€	3.12%
Natural Gas	867,470.936	21.81%	237,861,662.40€	24.13%
Large Hydro	140,161.092	3.52%	41,056,492.35€	4.17%
RES	1,630,515.314	40.99%	370,876,760.79€	37.63%
Crete Renewables	45,236.000	1.14%	10,731,929.74€	1.09%
Imports	979,890.000	24.63%	246,552,138.48€	25.01%
<b>Total</b>	<b>3,978,033.730</b>	<b>100.00%</b>	<b>985,683,991.88€</b>	<b>100.00%</b>

<b>Ref No</b>	Table 1.2								
<b>Title</b>	Statistics per Aggregated Classification - SELL								
<b>Scope</b>	Day Ahead Market (DAM)								
<b>Analysis</b>	Monthly								
	MCP [€/MWh]	Total [MWh]	Lignite [MWh]	CR Conv [MWh]	Natural Gas [MWh]	Hydro [MWh]	RES [MWh]	CR RES [MWh]	Imports [MWh]
<b>Total</b>	-	3,978,033.73	192,221.14	122,539.25	867,470.94	140,161.09	1,630,515.31	45,236.00	979,890.00
<b>Average</b>	246.60	132,601.12	6,407.37	4,084.64	28,915.70	4,672.04	54,350.51	1,507.87	32,663.00
<b>Min</b>	168.22	103,611.66	4,448.91	3,026.00	9,662.79	2,715.94	29,962.52	668.00	22,946.67
<b>Min day</b>	10	24	17	14	17	24	4	26	1
<b>Max</b>	334.43	155,322.39	10,502.00	5,402.00	61,425.60	9,765.86	84,745.14	2,843.00	47,345.80
<b>Max day</b>	4	1	28	21	4	4	1	11	16
<b>Spread</b>	166.21	51,710.72	6,053.09	2,376.00	51,762.81	7,049.92	54,782.62	2,175.00	24,399.13
<b>Standard Deviation</b>	32.77	9,679.37	2,156.58	521.73	12,722.49	1,512.64	15,164.86	544.60	5,634.53

<b>Ref No</b>	Table 1.3
<b>Title</b>	Market Shares per Aggregated Classification - BUY
<b>Scope</b>	Day Ahead Market (DAM)
<b>Analysis</b>	Monthly

Classification	Quantity [MWh]	Share [%]	Value [EUR]	Share [%]
System Losses	89,404.500	2.25%	22,085,997.03€	2.24%
Crete Load	209,541.000	5.27%	52,112,415.83€	5.29%
HV Load	615,455.427	15.47%	151,477,496.61€	15.37%
MV Load	728,673.174	18.32%	182,446,989.76€	18.51%
LV Load	2,170,595.956	54.56%	542,474,086.52€	55.04%
PUMP	15,696.411	0.39%	2,715,559.45€	0.28%
Exports	148,667.850	3.74%	32,371,612.07€	3.28%
<b>Total</b>	<b>3,978,034.318</b>	<b>100.00%</b>	<b>985,684,157.27€</b>	<b>100.00%</b>

<b>Ref No</b>	Table 1.4
<b>Title</b>	Statistics per Aggregated Classification - BUY
<b>Scope</b>	Day Ahead Market (DAM)
<b>Analysis</b>	Monthly

	MCP [€/MWh]	Total [MWh]	Sys Losses [MWh]	CR Load [MWh]	HV [MWh]	MV [MWh]	LV [MWh]	PUMP [MWh]	Exports [MWh]
<b>Total</b>	-	3,978,034.32	89,404.50	209,541.00	615,455.43	728,673.17	2,170,595.96	15,696.41	148,667.85
<b>Average</b>	246.60	132,601.14	2,980.15	6,984.70	20,515.18	24,289.11	72,353.20	603.71	4,955.60
<b>Min</b>	168.22	103,611.59	2,191.00	5,711.00	18,760.63	14,093.77	53,494.28	6.53	565.00
<b>Min day</b>	10	24	22	10	22	24	25	4	19
<b>Max</b>	334.43	155,322.38	4,697.50	9,696.00	22,364.73	28,711.40	82,806.55	1,565.00	16,418.04
<b>Max day</b>	4	1	18	21	23	5	19	6	1
<b>Spread</b>	166.21	51,710.79	2,506.50	3,985.00	3,604.10	14,617.63	29,312.27	1,558.47	15,853.04
<b>Standard Deviation</b>	32.77	9,679.36	450.71	688.40	879.02	4,413.82	6,516.55	394.17	4,249.28

## 2. Market Shares

<b>Ref No</b>	Table 2.1.1			
<b>Title</b>	Market Shares - Upward Capacity Reserves Volumes per Type			
<b>Scope</b>	Balancing Market (BM)			
<b>Analysis</b>	Monthly			
Type	Quantity [MW]	Share [%]	Value [EUR]	Share [%]
aFRR	879.000.330	71.14%	2,330,587.93€	84.72%
FCR	105,649.350	8.55%	187,755.64€	6.83%
mFRR	250,924.990	20.31%	232,645.27€	8.46%
<b>Total</b>	<b>1,235,574.670</b>	<b>100.00%</b>	<b>2,750,988.84€</b>	<b>100.00%</b>

<b>Ref No</b>	Table 2.1.2			
<b>Title</b>	Market Shares - Downward Capacity Reserves per Type			
<b>Scope</b>	Balancing Market(BM)			
<b>Analysis</b>	Monthly			
Type	Quantity [MW]	Share [%]	Value [EUR]	Share [%]
aFRR	243,752.850	46.56%	442,468.09€	55.12%
FCR	83,953.990	16.04%	43,072.69€	5.37%
mFRR	195,855.110	37.41%	317,267.42€	39.52%
<b>Total</b>	<b>523,561.960</b>	<b>100.00%</b>	<b>802,808.19€</b>	<b>100.00%</b>

<b>Ref No</b>	Table 2.1.3
<b>Title</b>	Market Shares - Upward Activated Balancing Energy per Type
<b>Scope</b>	Balancing Market (BM)
<b>Analysis</b>	Monthly

Type	Quantity [MWh]	Share [%]	Value [EUR]	Share [%]
aFRR	90,415.290	38.31%	32,235,156.60€	38.59%
mFRR	145,603.010	61.69%	51,288,613.94€	61.41%
<b>Total</b>	<b>236,018.300</b>	<b>100.00%</b>	<b>83,523,770.53€</b>	<b>100.00%</b>

<b>Ref No</b>	Table 2.1.4
<b>Title</b>	Market Shares - Downward Activated Balancing Energy per Type
<b>Scope</b>	Balancing Market (BM)
<b>Analysis</b>	Monthly

Type	Quantity [MWh]	Share [%]	Value [EUR]	Share [%]
aFRR	58,840.570	33.17%	5,600,588.55€	33.50%
mFRR	118,544.000	66.83%	11,116,167.82€	66.50%
<b>Total</b>	<b>177,384.580</b>	<b>100.00%</b>	<b>16,716,756.37€</b>	<b>100.00%</b>

### 3. Market Overview

<b>Ref No</b>	Table 3.1
<b>Title</b>	Total Transactions Quantity per Market
<b>Scope</b>	DAM, IDM, Balancing Energy Market
<b>Analysis</b>	Monthly

Market	Quantity [MWh]	Share [%]
DAM	3,978,033.73	95.73%
IDMA1	52,097.68	1.25%
IDMA2	41,923.06	1.01%
IDMA3	24,778.89	0.60%
IDM (Total)	118,799.63	2.86%
Balancing Energy (Up)	236,018.30	5.68%
Balancing Energy (Dn)	177,384.58	4.27%
Balancing Energy (Total)	58,633.72	1.41%
<b>Total</b>	<b>4,155,467.08</b>	<b>100.00%</b>

<b>Ref No</b>	Table 3.2
<b>Title</b>	Total Transactions Value per Market
<b>Scope</b>	DAM, IDM, Balancing Energy Market
<b>Analysis</b>	Monthly

Market	Value [EUR]	Share [%]
DAM	985,683,991.88€	90.73%
IDMA1	13,606,190.82€	1.25%
IDMA2	10,675,184.58€	0.98%
IDMA3	6,041,673.32€	0.56%
IDM (Total)	30,323,048.72€	2.79%
Balancing Capacity (Up)	2,750,988.84€	0.25%
Balancing Capacity (Dn)	802,808.19€	0.07%
Balancing Capacity (Total)	3,553,797.03€	0.33%
Balancing Energy (Up)	83,523,770.53€	7.69%
Balancing Energy (Dn)	16,716,756.37€	1.54%
Balancing Energy (Total)	66,807,014.16€	6.15%
Balancing Market (Total)	70,360,811.19€	6.48%
<b>Total</b>	<b>1,086,367,851.79€</b>	<b>100.00%</b>