

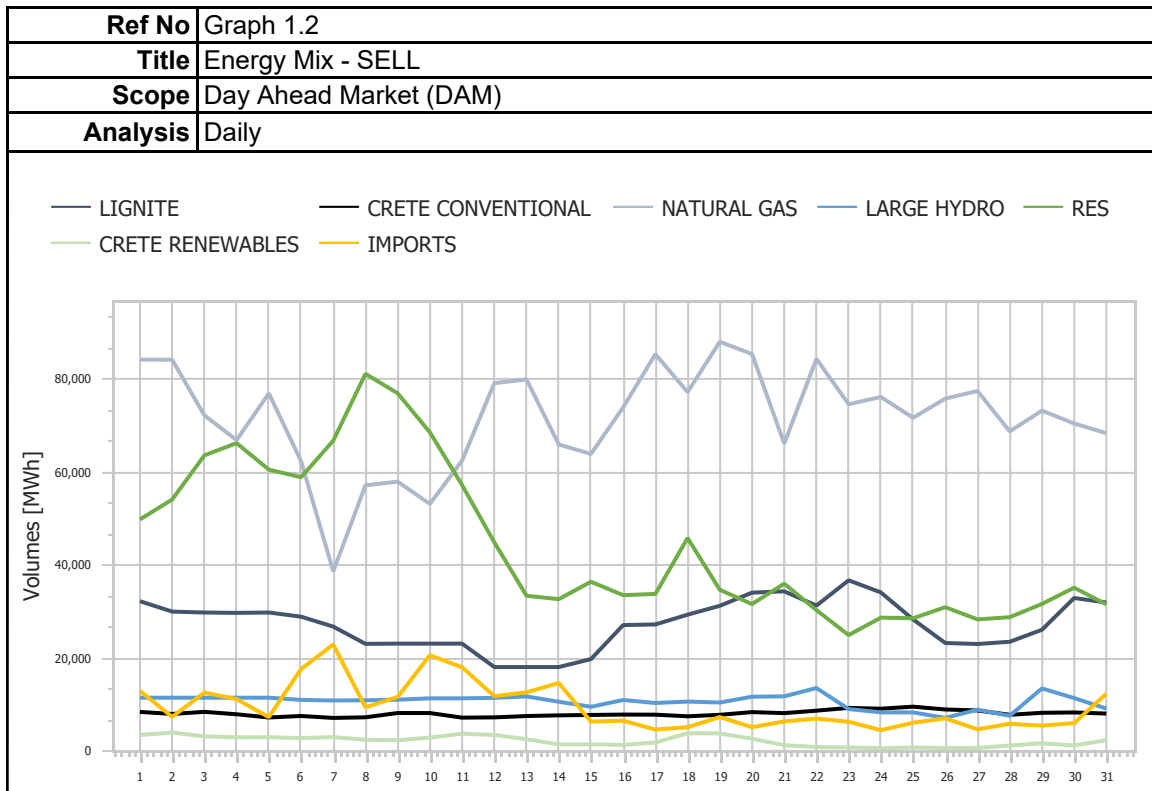
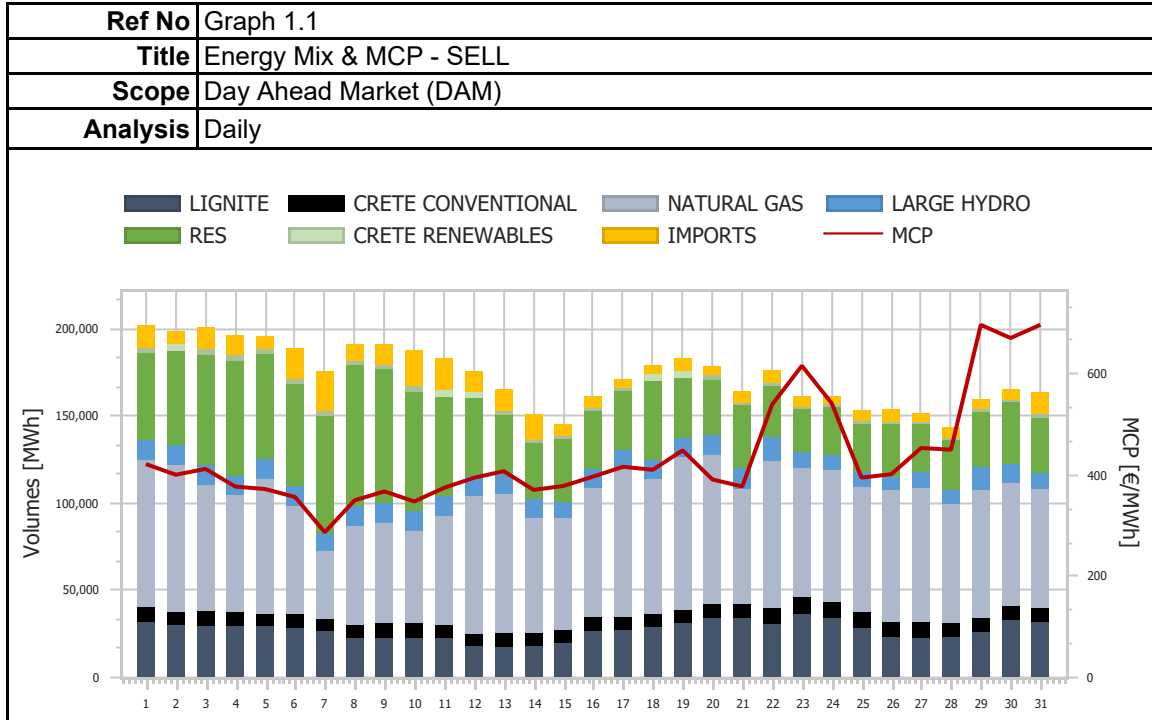
# Market Monitoring Report

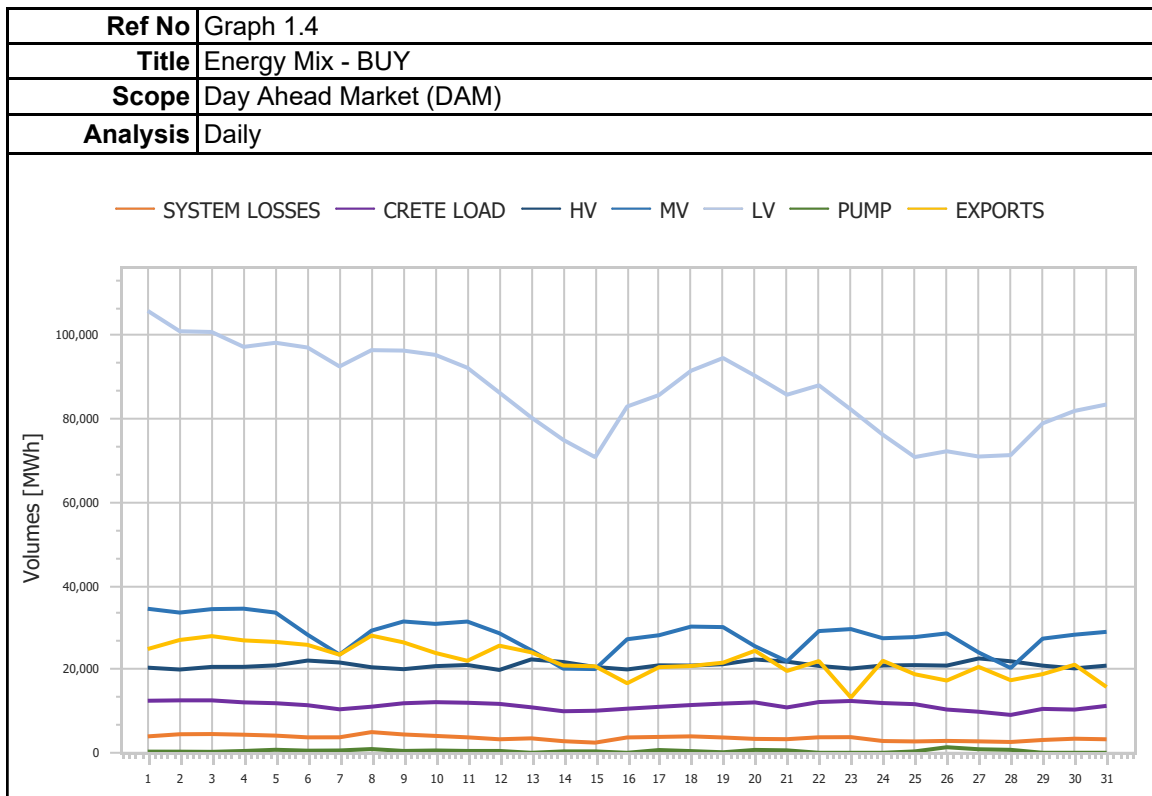
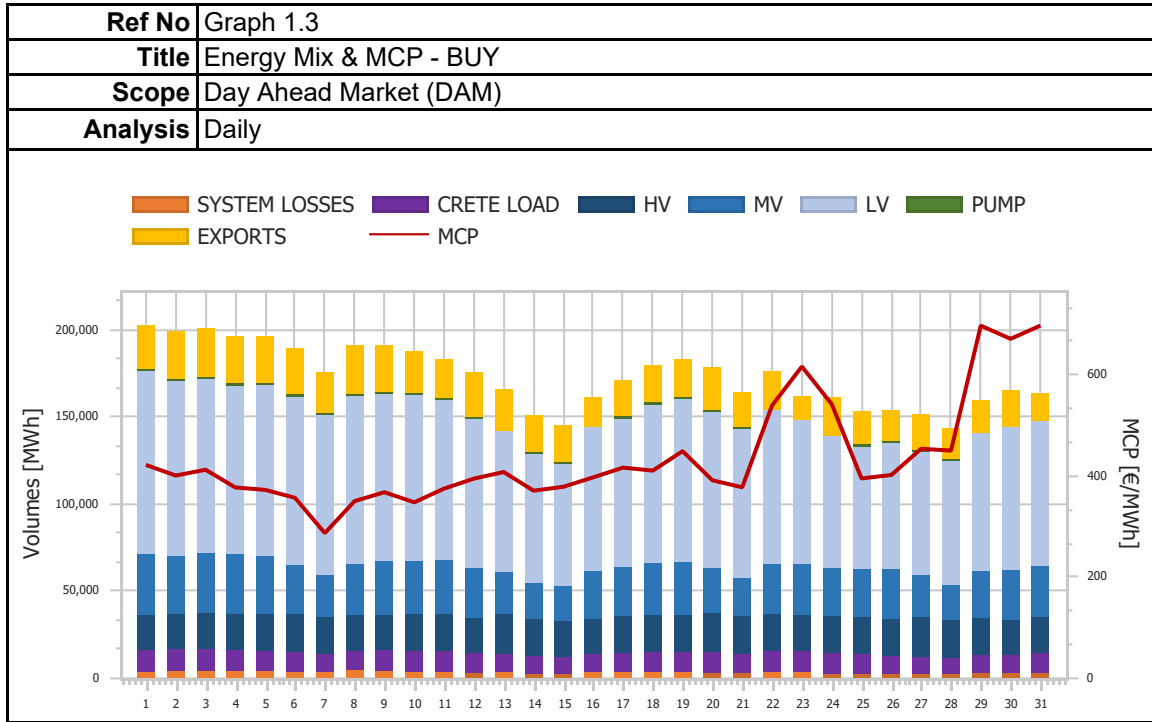
Monthly - Public - 2

**08-2022**

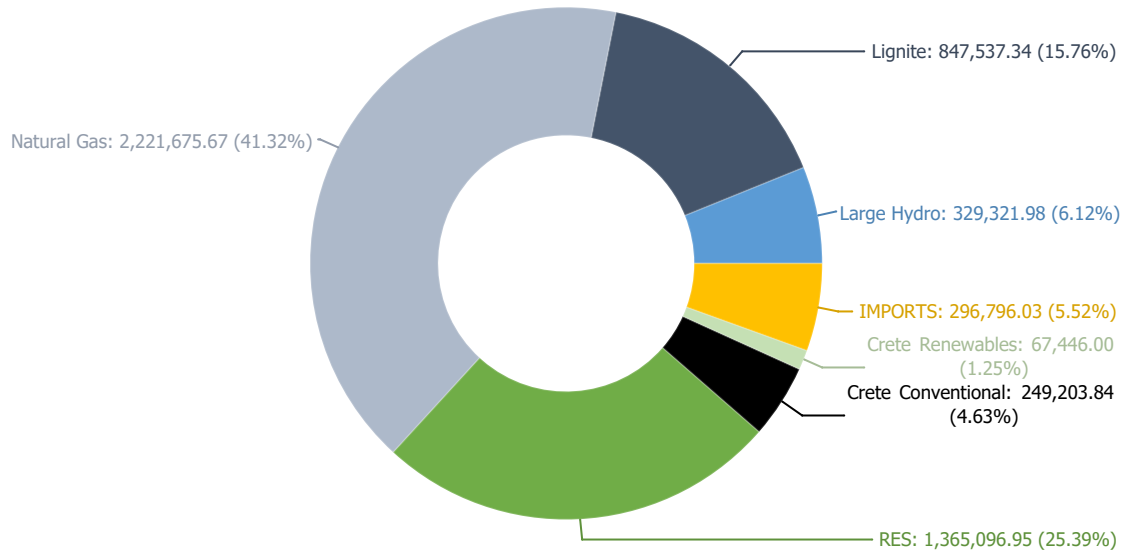


# 1. Day Ahead Market (DAM)

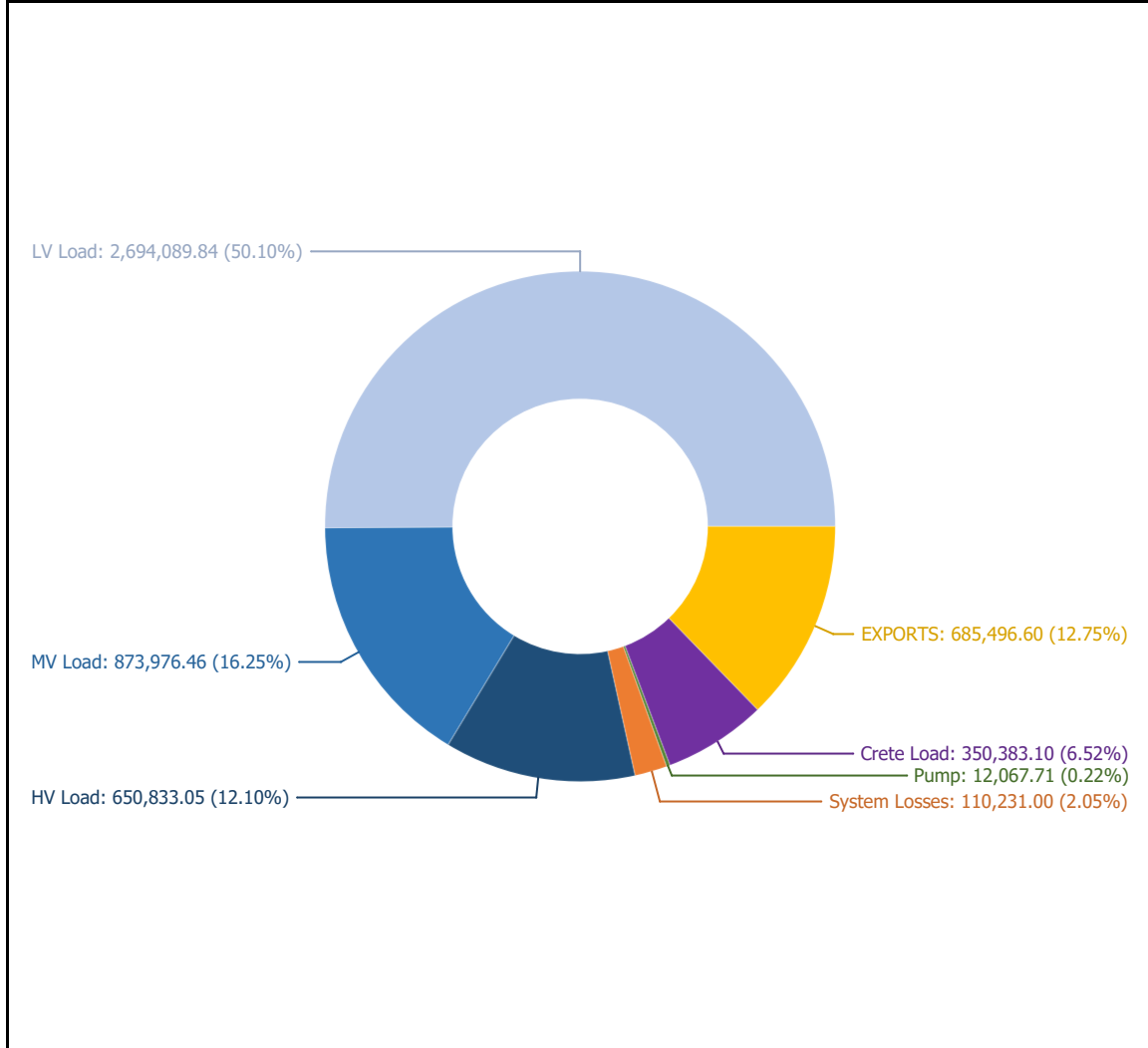


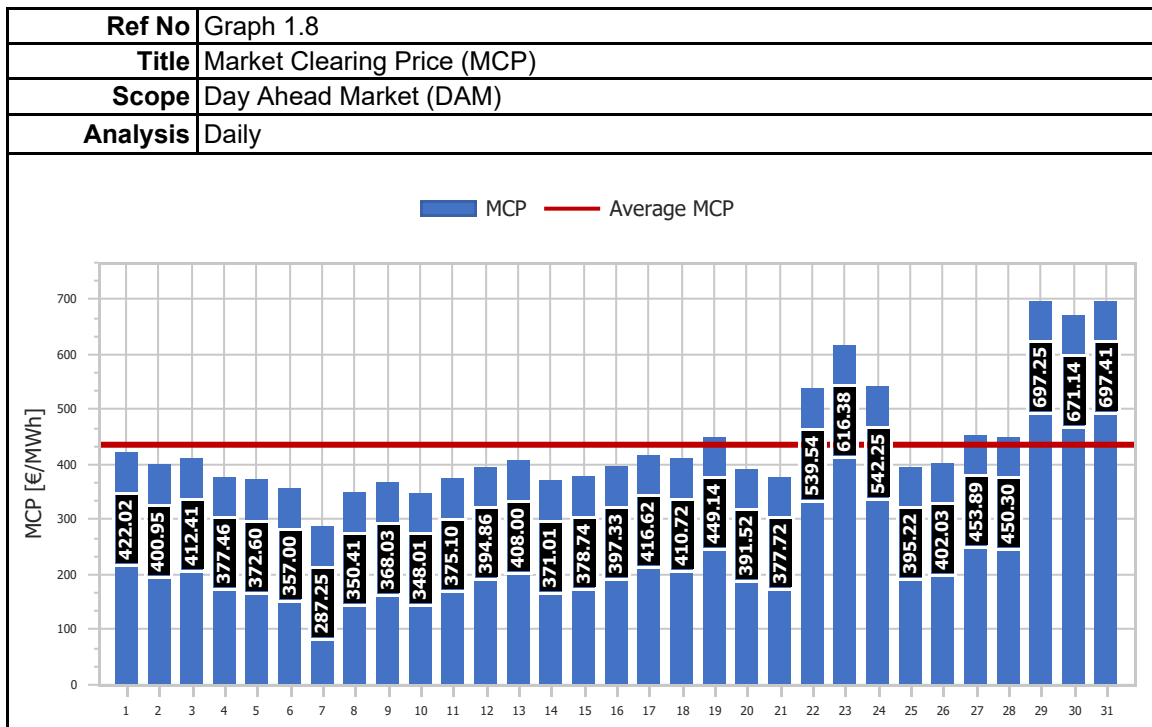
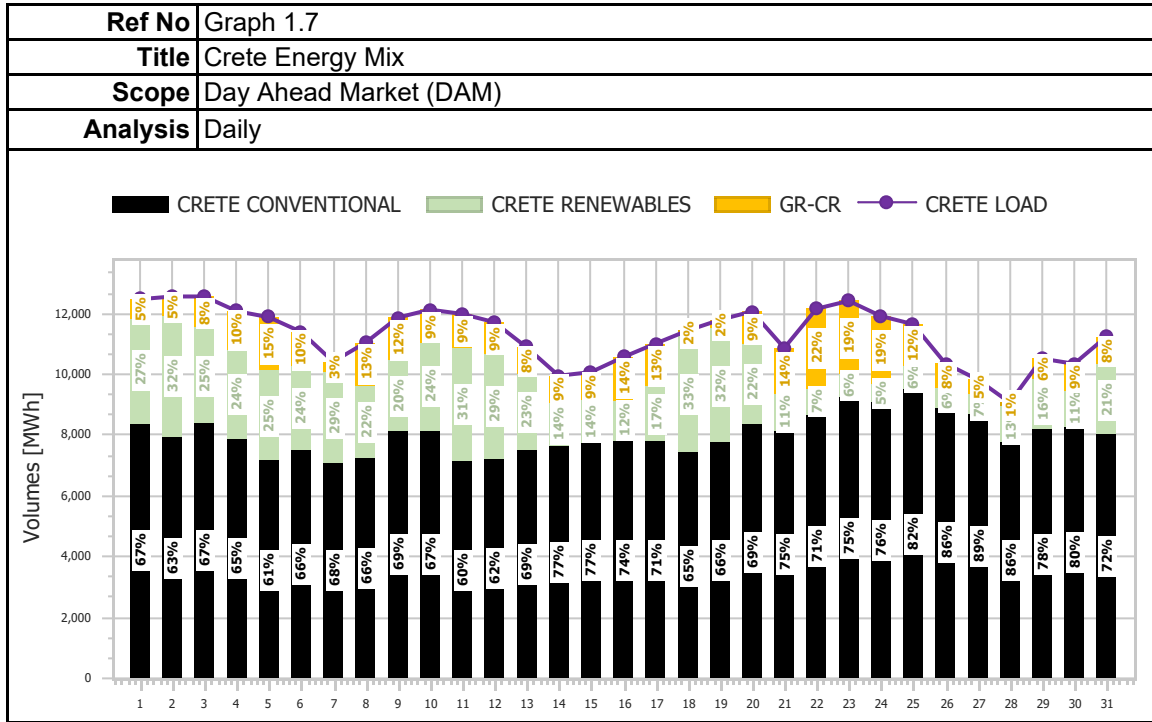


<b>Ref No</b>	Graph 1.5
<b>Title</b>	Energy Mix - SELL
<b>Scope</b>	Day Ahead Market (DAM)
<b>Analysis</b>	Daily

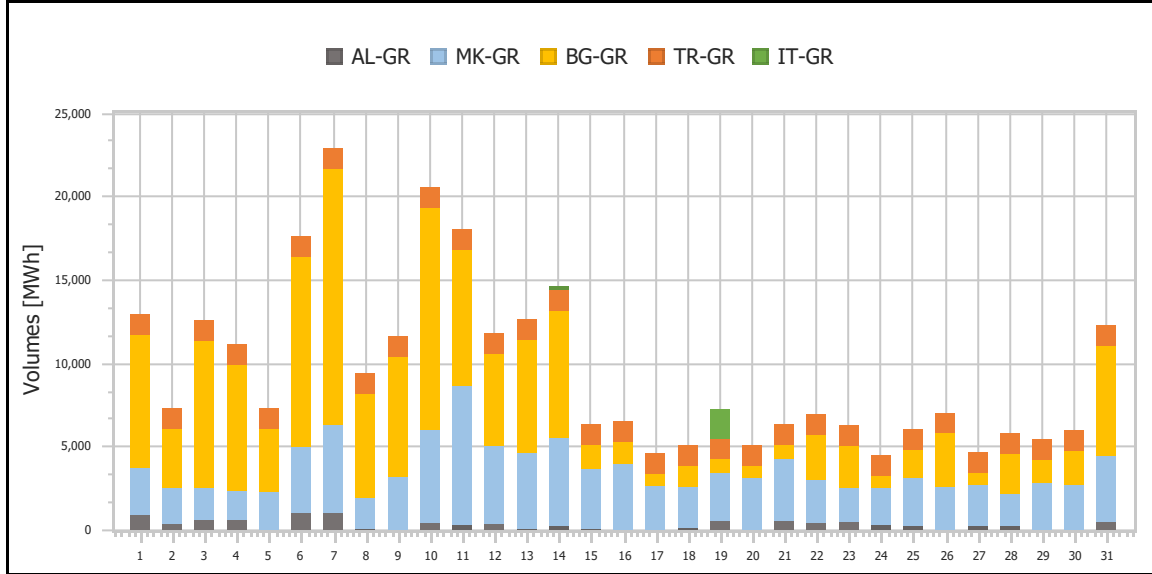


<b>Ref No</b>	Graph 1.6
<b>Title</b>	Energy Mix - BUY
<b>Scope</b>	Day Ahead Market (DAM)
<b>Analysis</b>	Daily

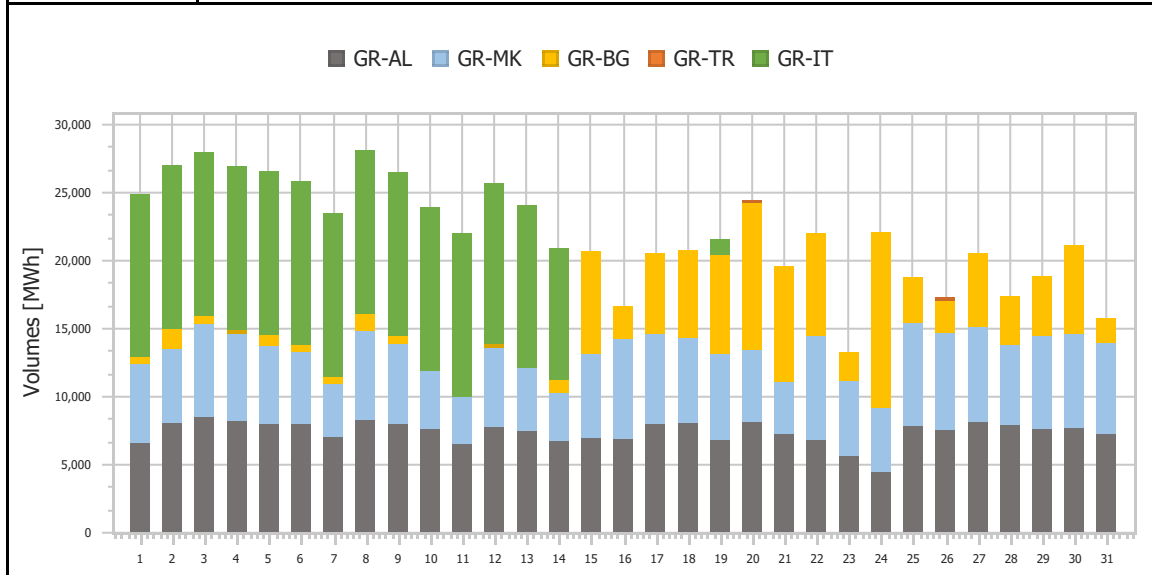




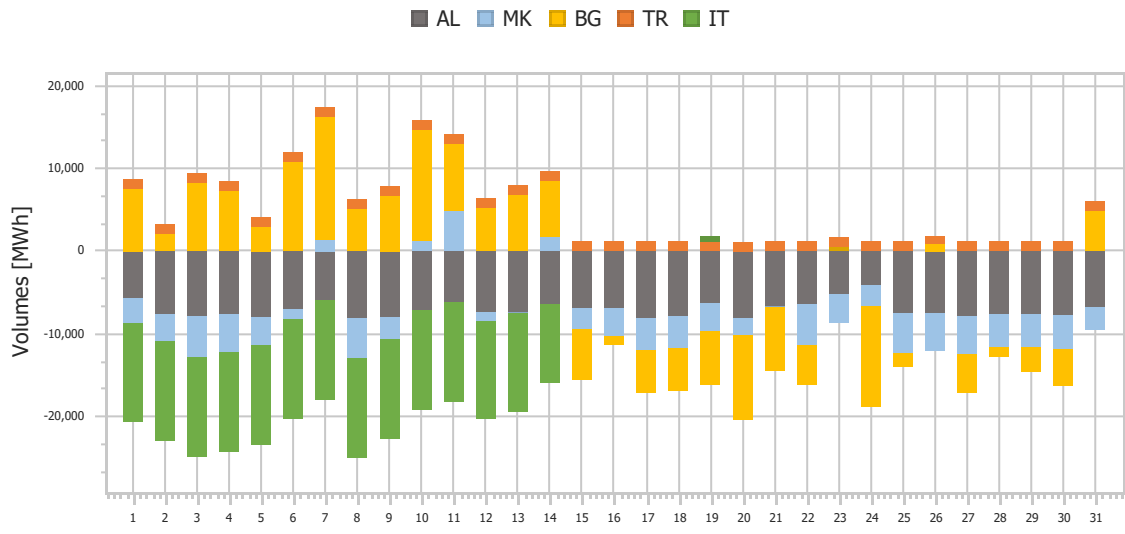
<b>Ref No</b>	Graph 1.9
<b>Title</b>	Imports per Border
<b>Scope</b>	Day Ahead Market (DAM)
<b>Analysis</b>	Daily



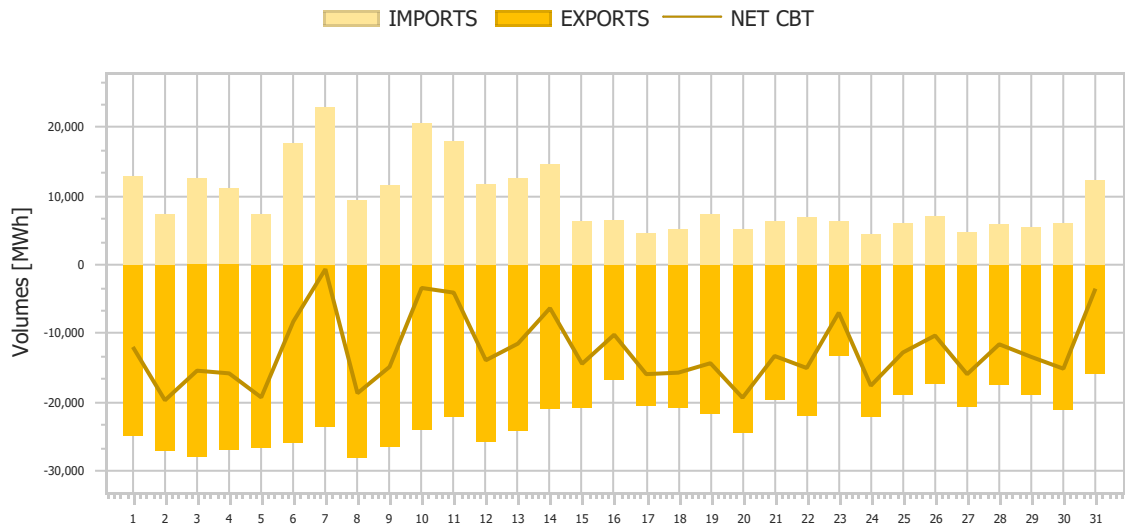
<b>Ref No</b>	Graph 1.10
<b>Title</b>	Exports per Border
<b>Scope</b>	Day Ahead Market (DAM)
<b>Analysis</b>	Daily



<b>Ref No</b>	Graph 1.11
<b>Title</b>	Net Imports per Border
<b>Scope</b>	Day Ahead Market (DAM)
<b>Analysis</b>	Daily

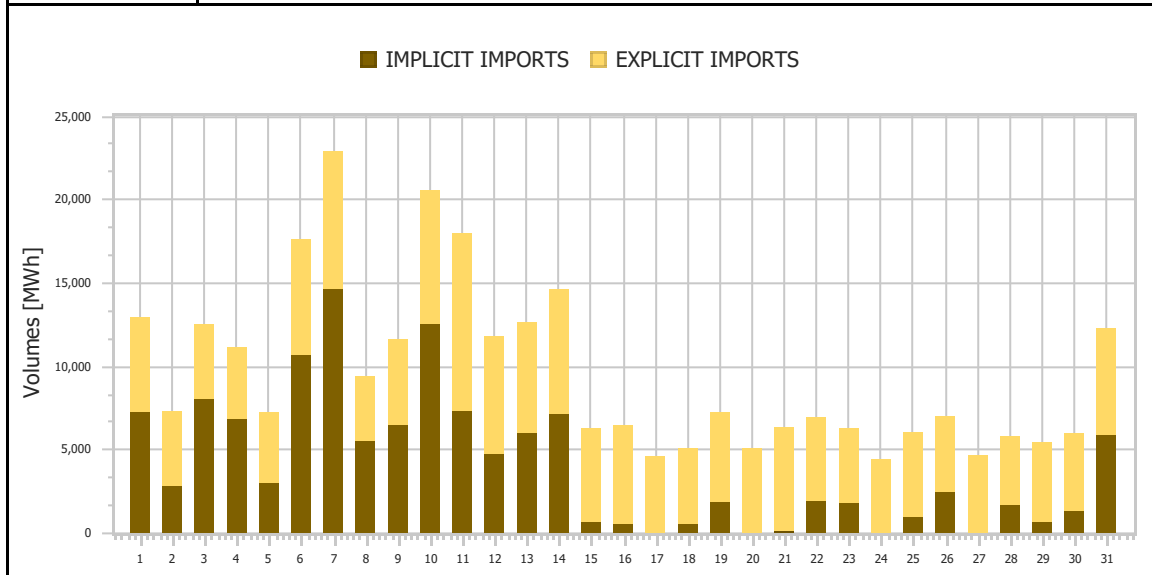


<b>Ref No</b>	Graph 1.12
<b>Title</b>	Total Imports & Exports
<b>Scope</b>	Day Ahead Market (DAM)
<b>Analysis</b>	Daily

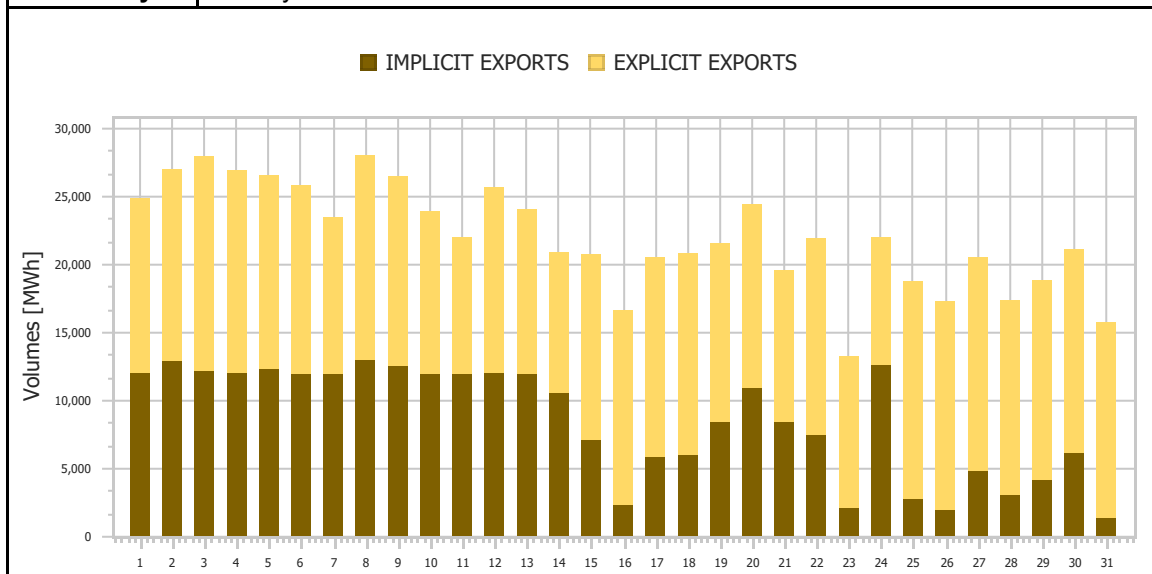


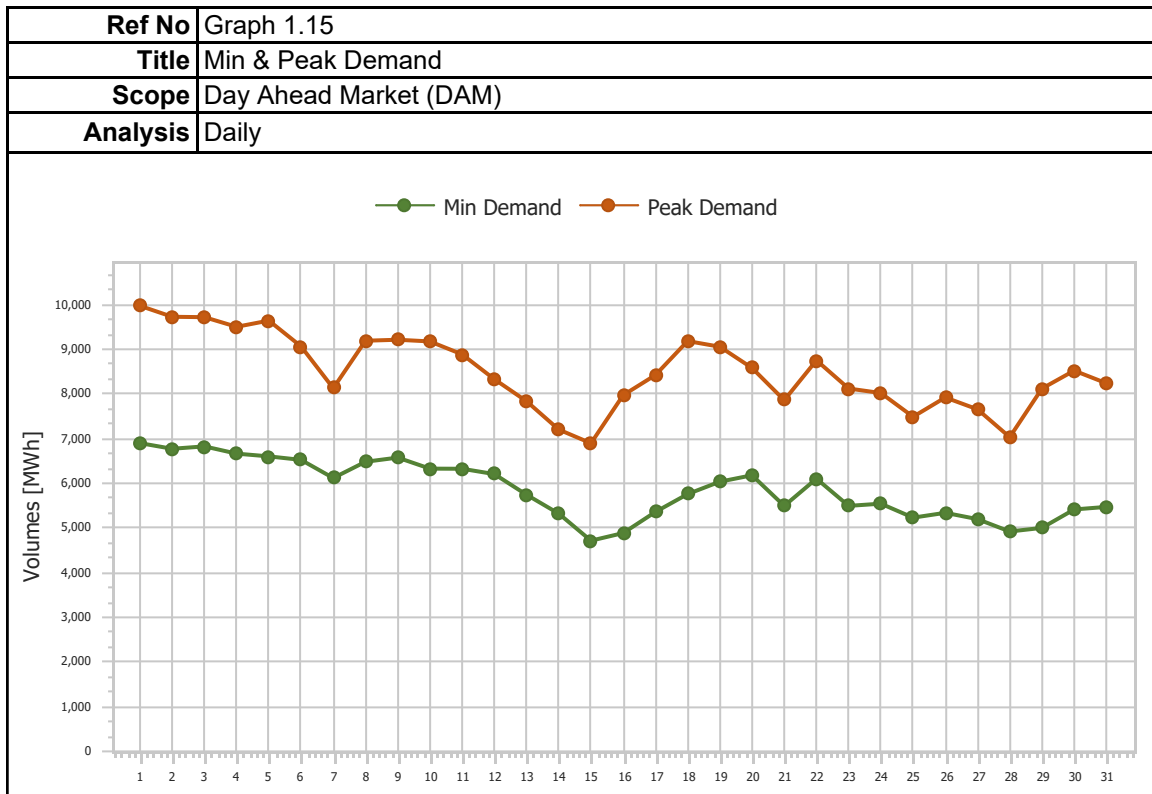


<b>Ref No</b>	Graph 1.13
<b>Title</b>	Imports (Implicit/Explicit)
<b>Scope</b>	Day Ahead Market (DAM)
<b>Analysis</b>	Daily

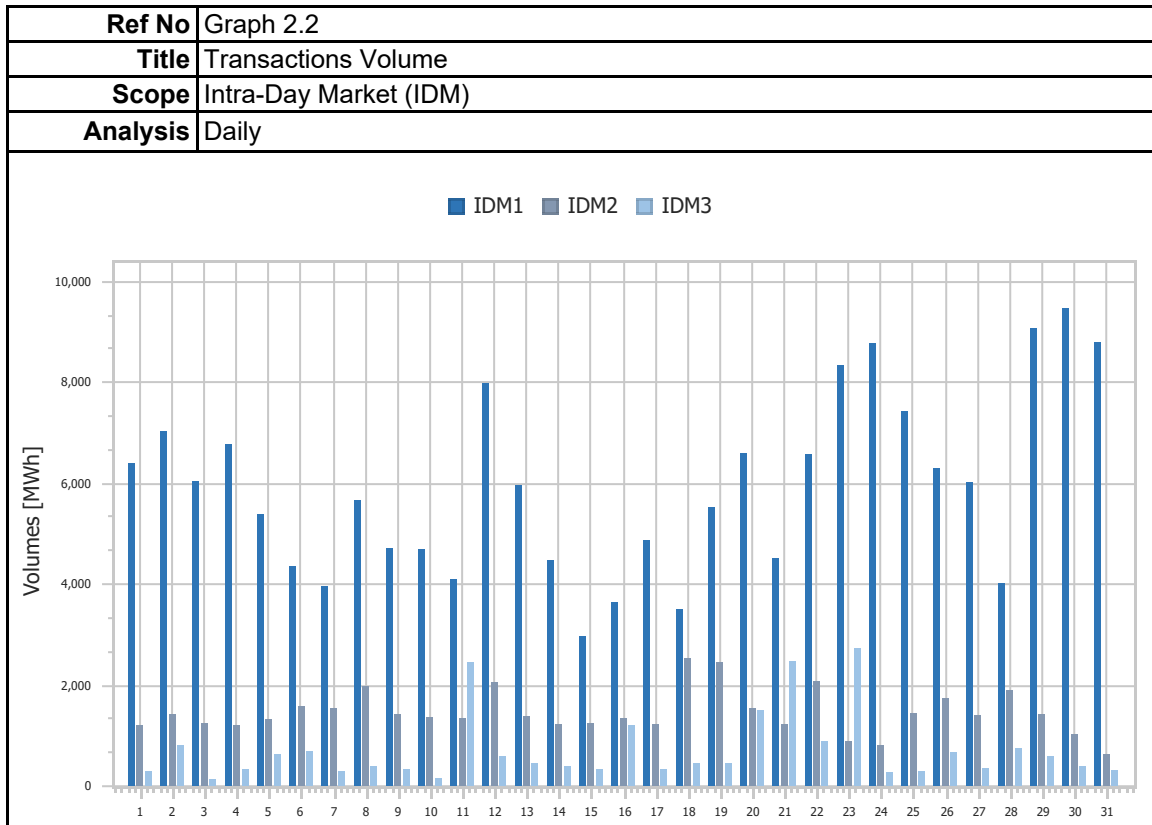
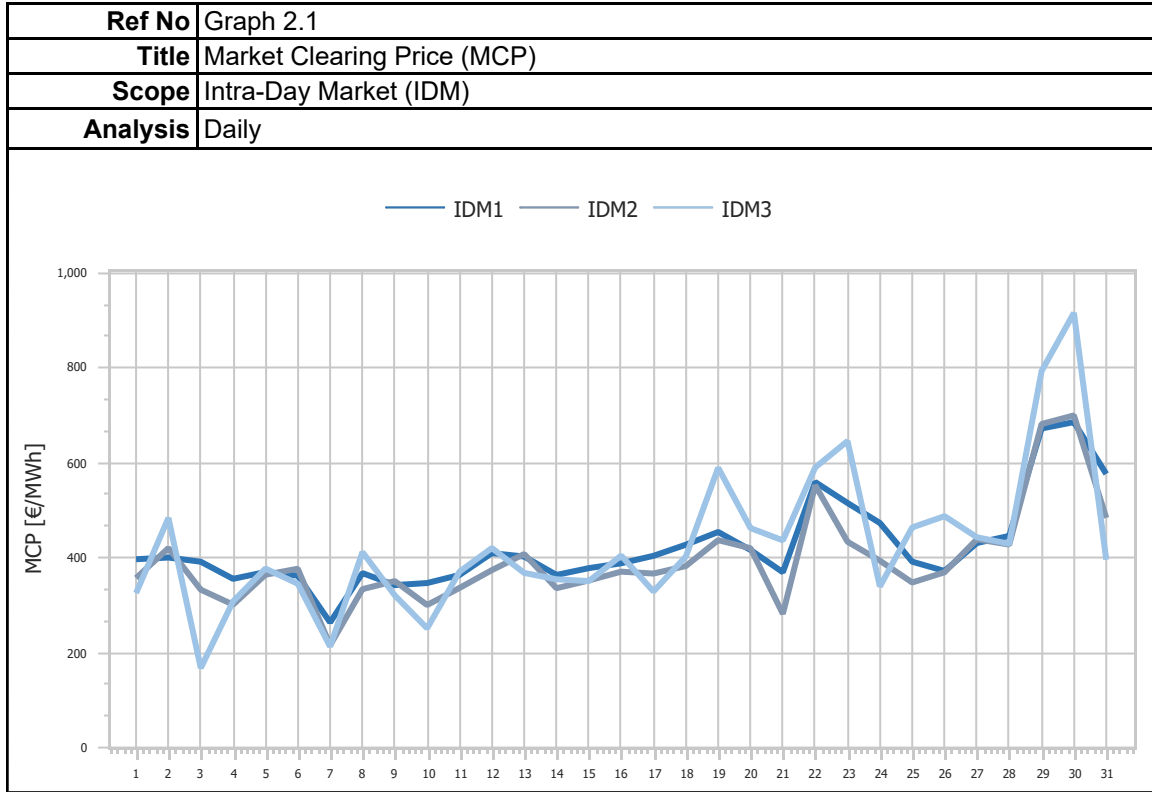


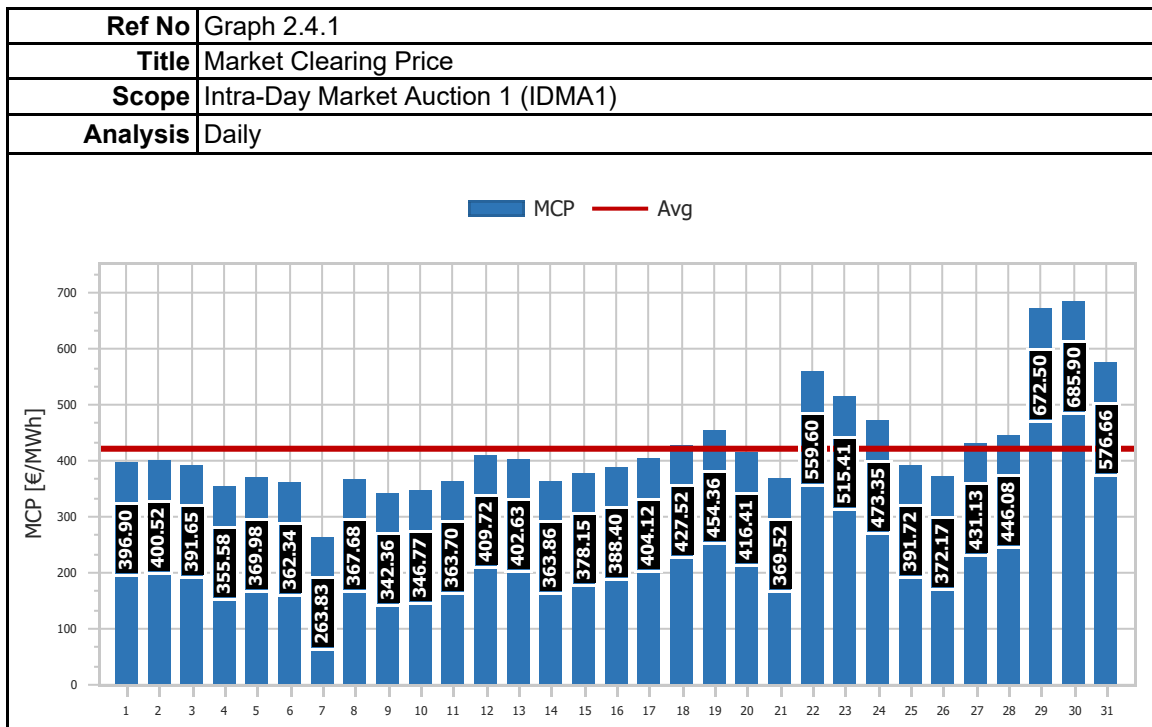
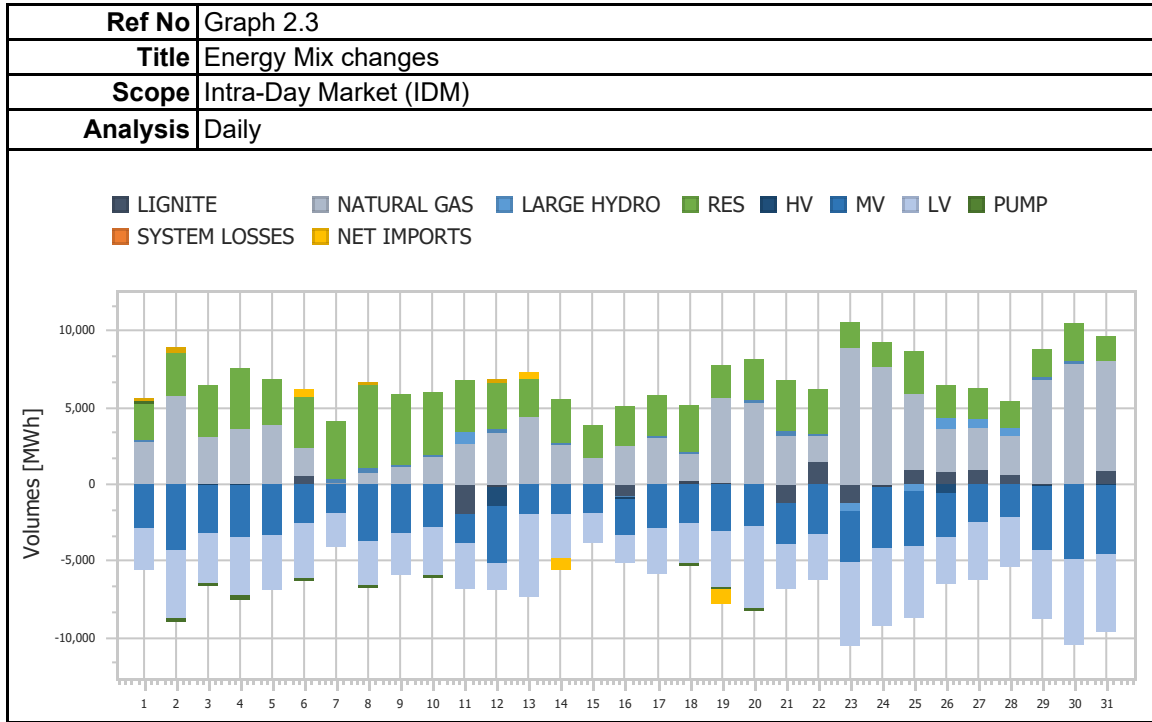
<b>Ref No</b>	Graph 1.14
<b>Title</b>	Exports (Implicit/Explicit)
<b>Scope</b>	Day Ahead Market (DAM)
<b>Analysis</b>	Monthly



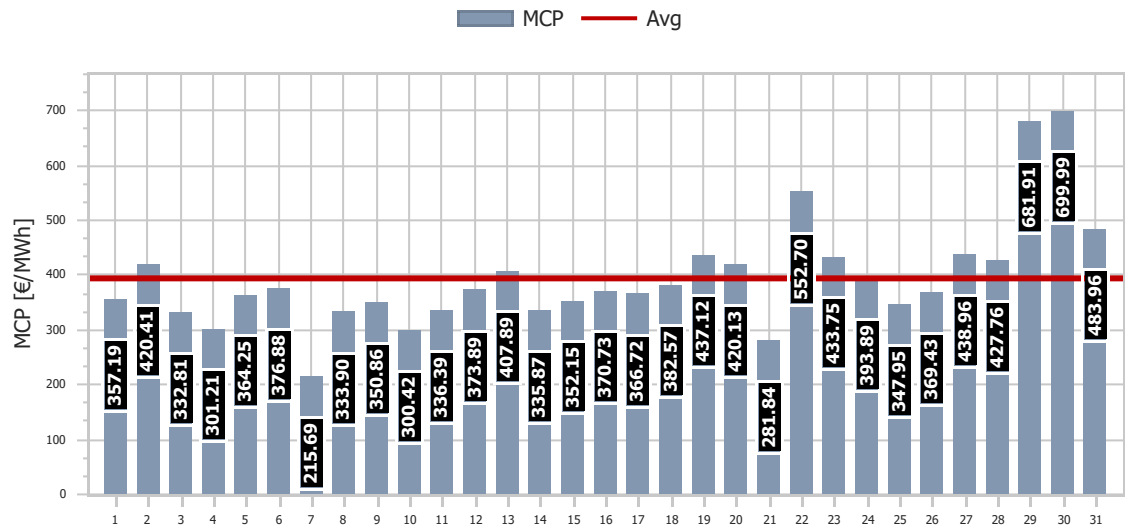


## 2. Intra-Day Market (IDM)

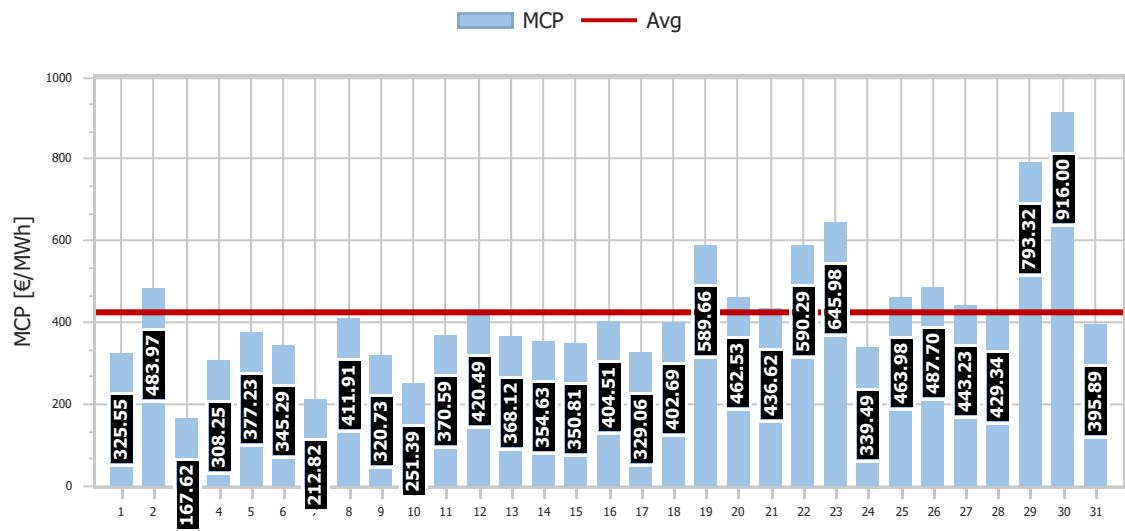




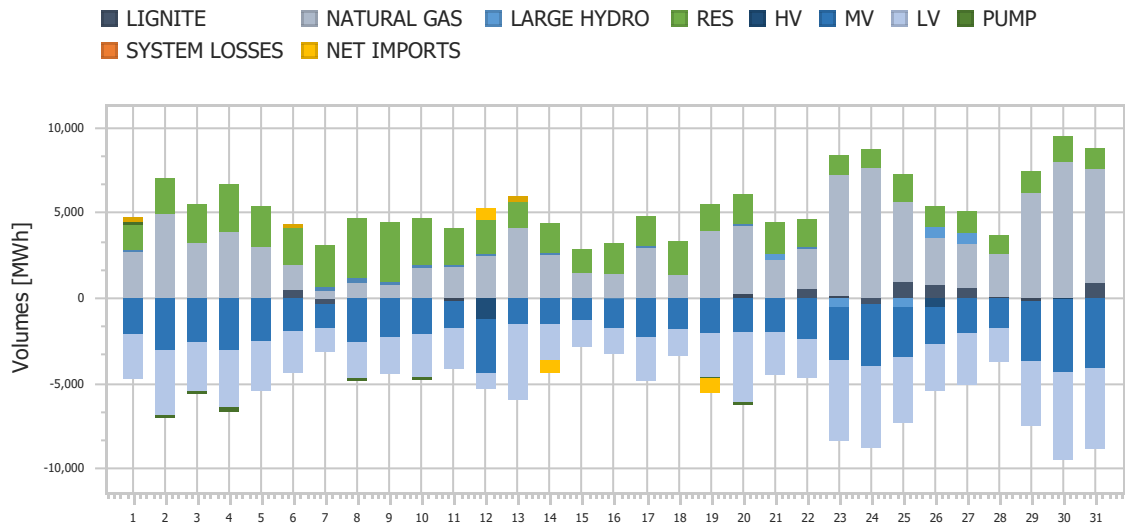
<b>Ref No</b>	Graph 2.4.2
<b>Title</b>	Market Clearing Price
<b>Scope</b>	Intra-Day Market Auction 2 (IDMA2)
<b>Analysis</b>	Daily



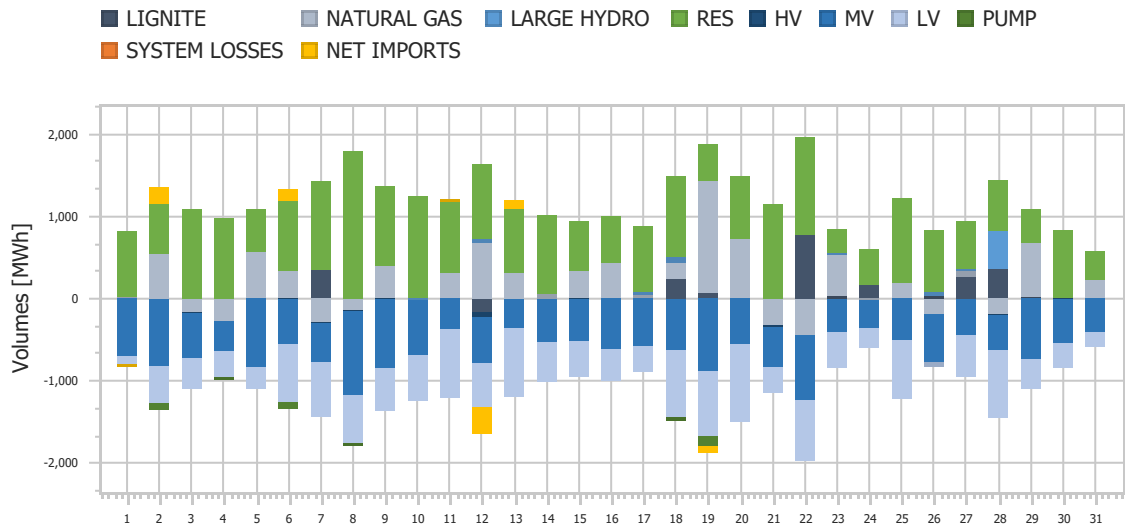
<b>Ref No</b>	Graph 2.4.3
<b>Title</b>	Market Clearing Price
<b>Scope</b>	Intra-Day Market Auction 3 (IDMA3)
<b>Analysis</b>	Daily



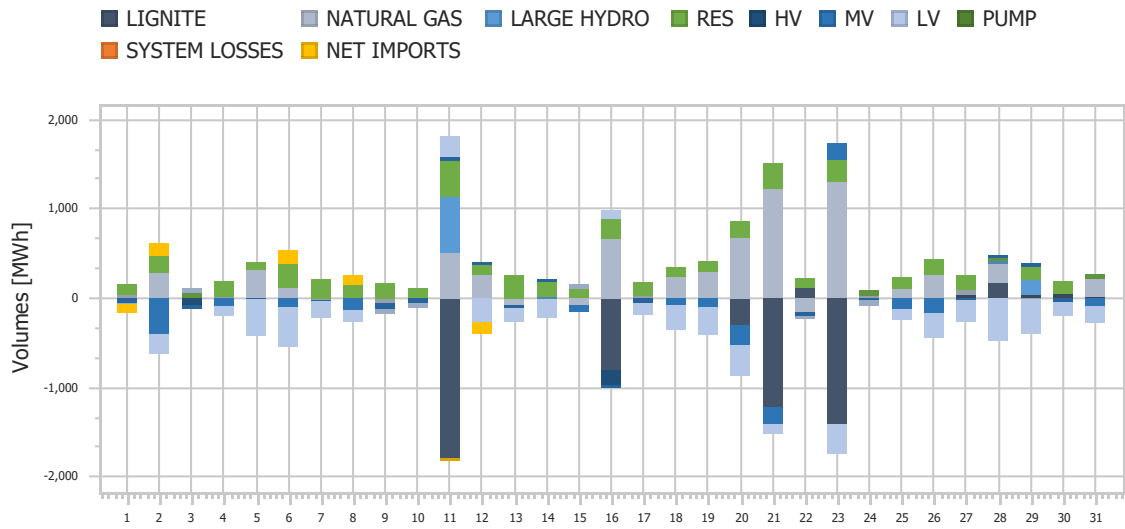
<b>Ref No</b>	Graph 2.5.1
<b>Title</b>	IDM Energy Mix Changes
<b>Scope</b>	Intra-Day Market Auction 1 (IDMA1)
<b>Analysis</b>	Daily



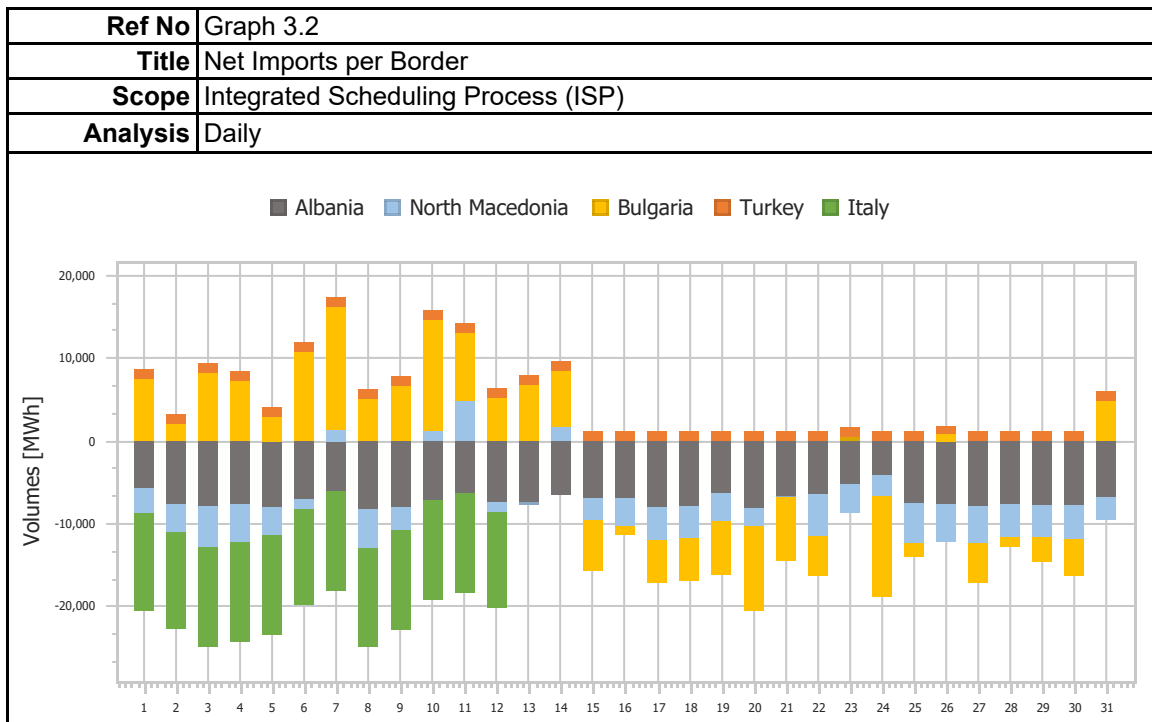
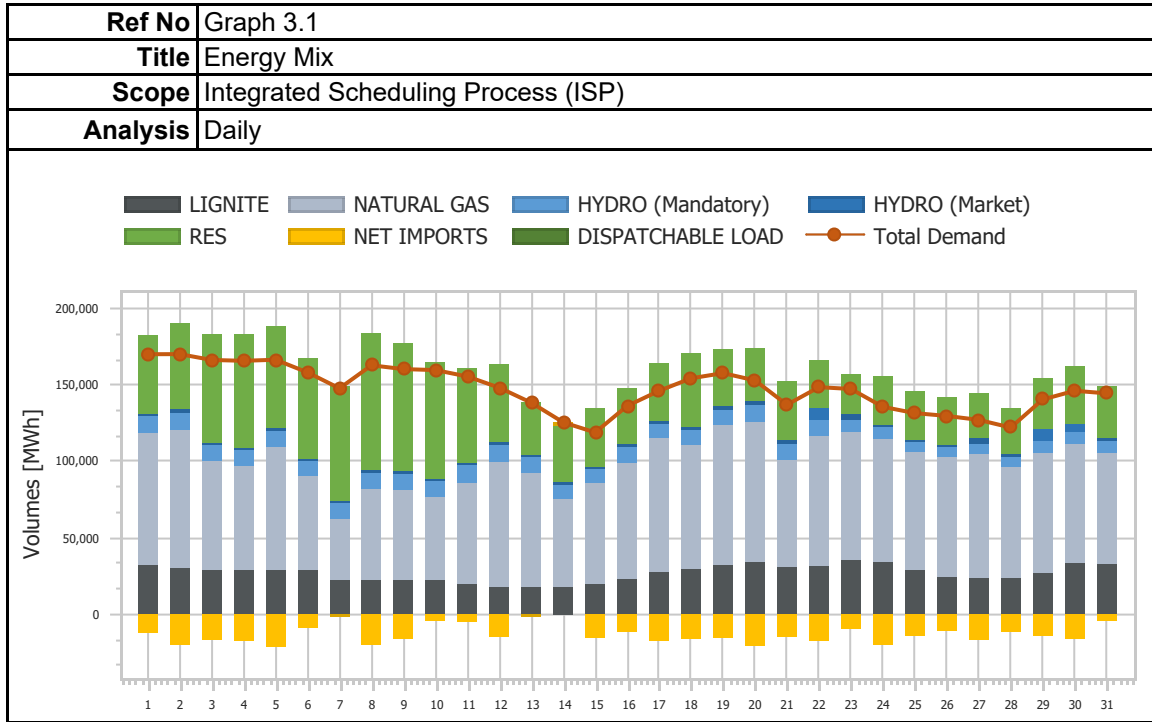
<b>Ref No</b>	Graph 2.5.2
<b>Title</b>	IDM Energy Mix Changes
<b>Scope</b>	Intra-Day Market Auction 2 (IDMA2)
<b>Analysis</b>	Daily



<b>Ref No</b>	Graph 2.5.3
<b>Title</b>	IDM Energy Mix Changes
<b>Scope</b>	Intra-Day Market Auction 3 (IDMA3)
<b>Analysis</b>	Daily

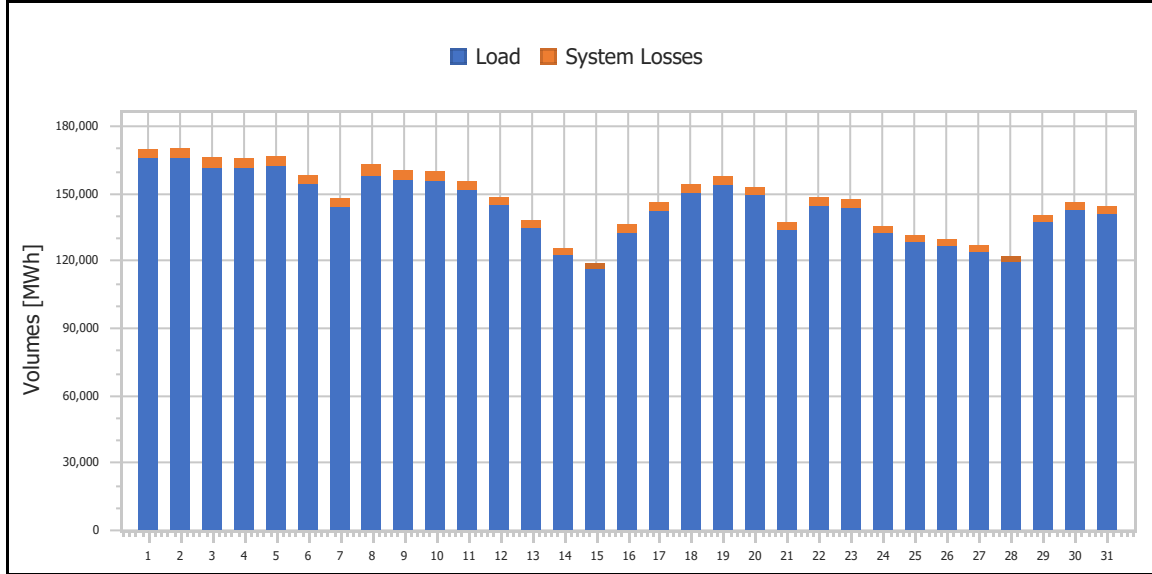


### 3. Integrated Scheduling Process (ISP)

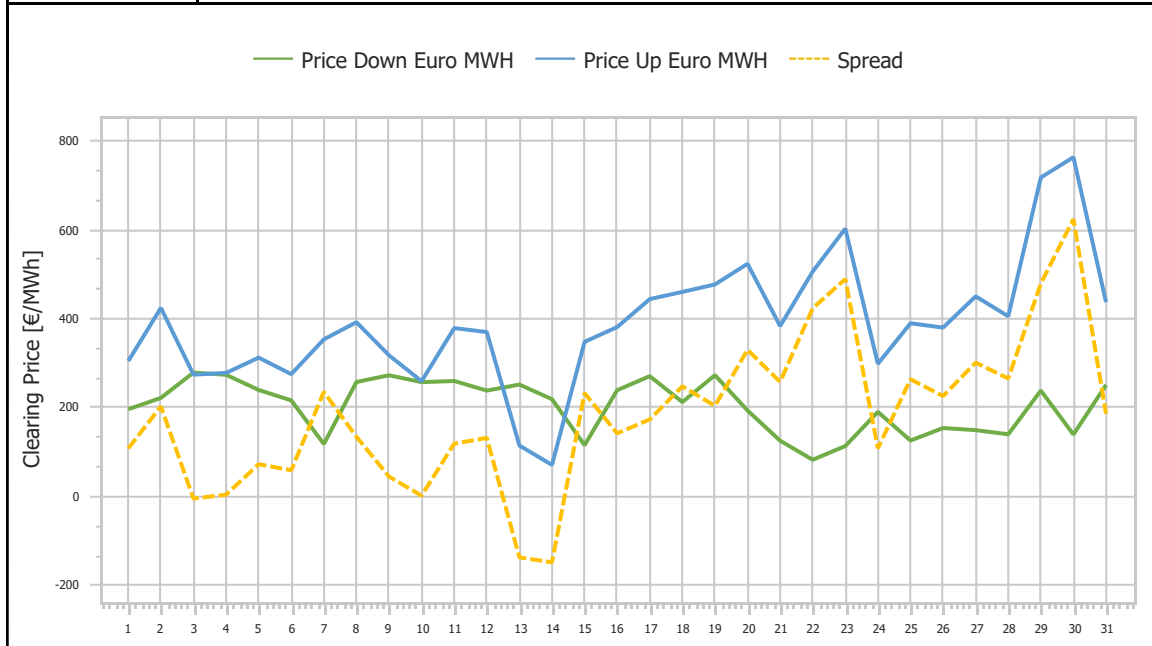




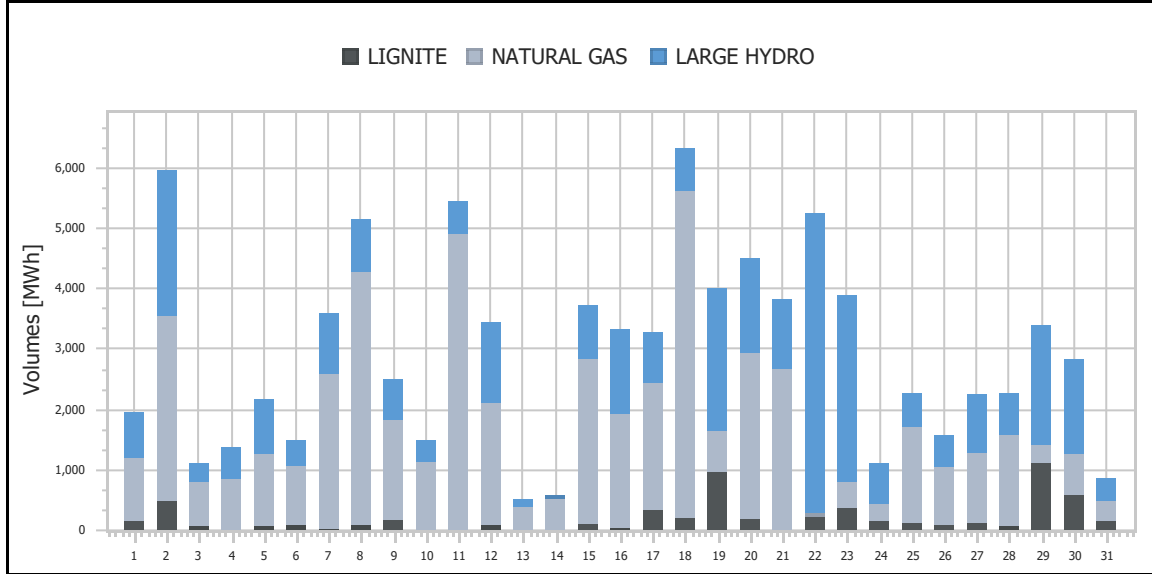
<b>Ref No</b>	Graph 3.3
<b>Title</b>	Demand & System Losses
<b>Scope</b>	Integrated Scheduling Process (ISP)
<b>Analysis</b>	Daily



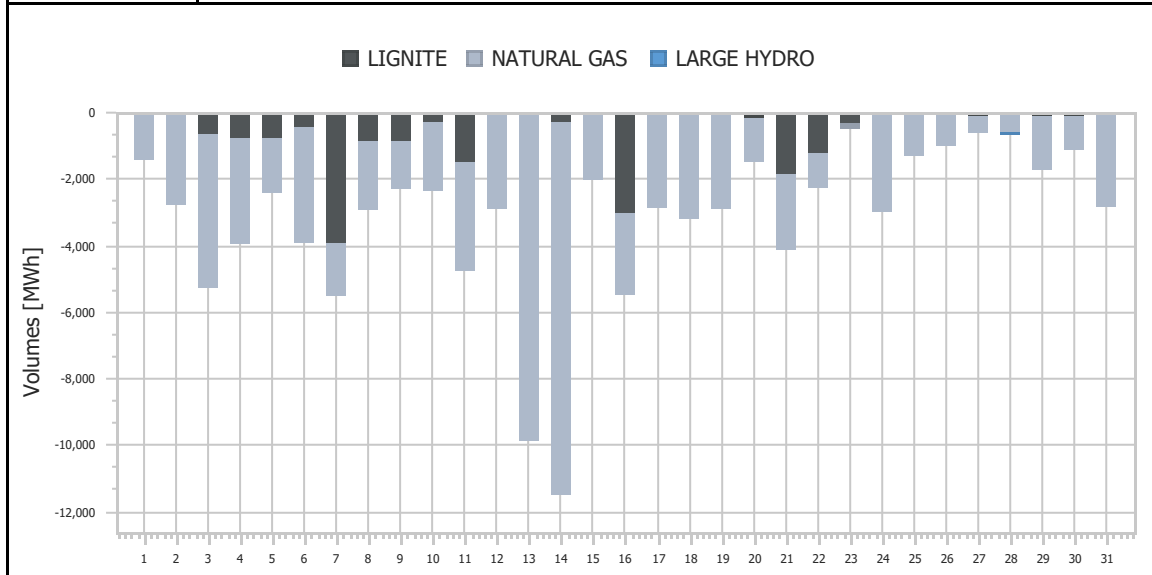
<b>Ref No</b>	Graph 3.4
<b>Title</b>	Clearing Prices
<b>Scope</b>	Integrated Scheduling Process (ISP)
<b>Analysis</b>	Daily



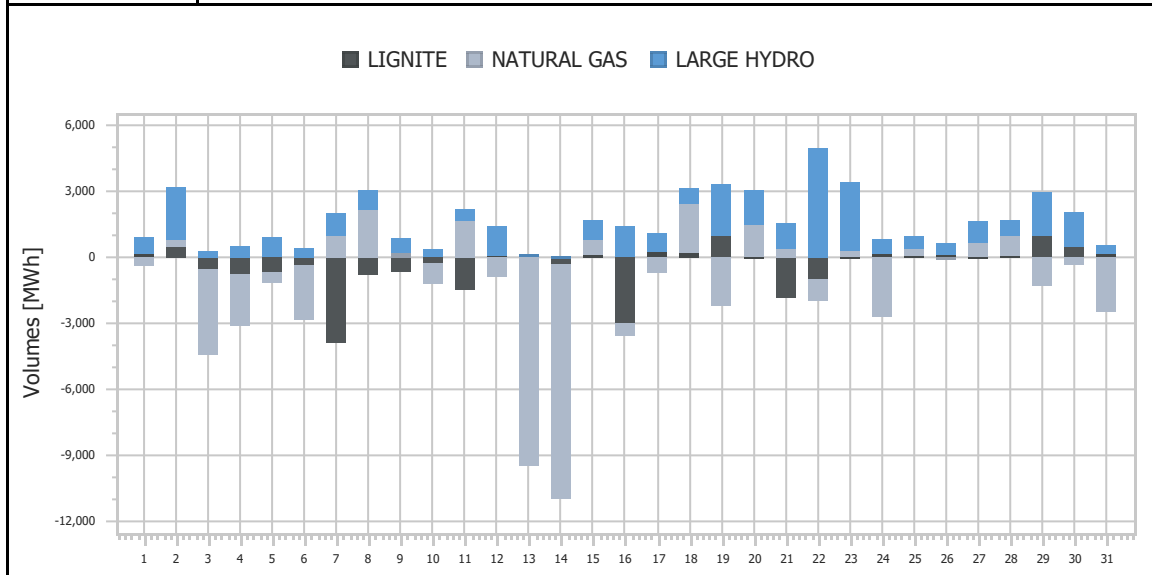
<b>Ref No</b>	Graph 3.5
<b>Title</b>	Upward Activated Balancing energy
<b>Scope</b>	Integrated Scheduling Process (ISP)
<b>Analysis</b>	Daily



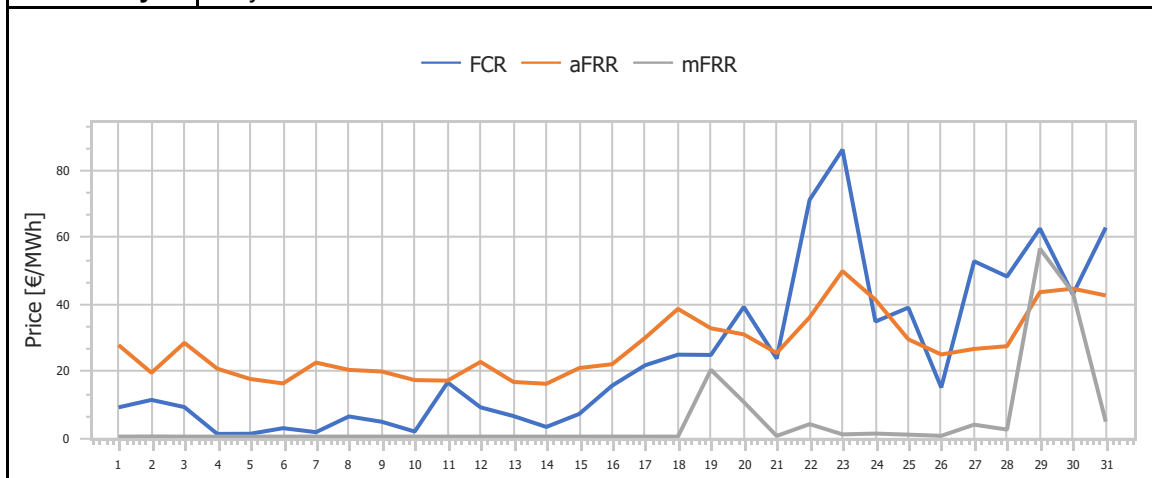
<b>Ref No</b>	Graph 3.6
<b>Title</b>	Downward Activated Balancing energy
<b>Scope</b>	Integrated Scheduling Process (ISP)
<b>Analysis</b>	Daily



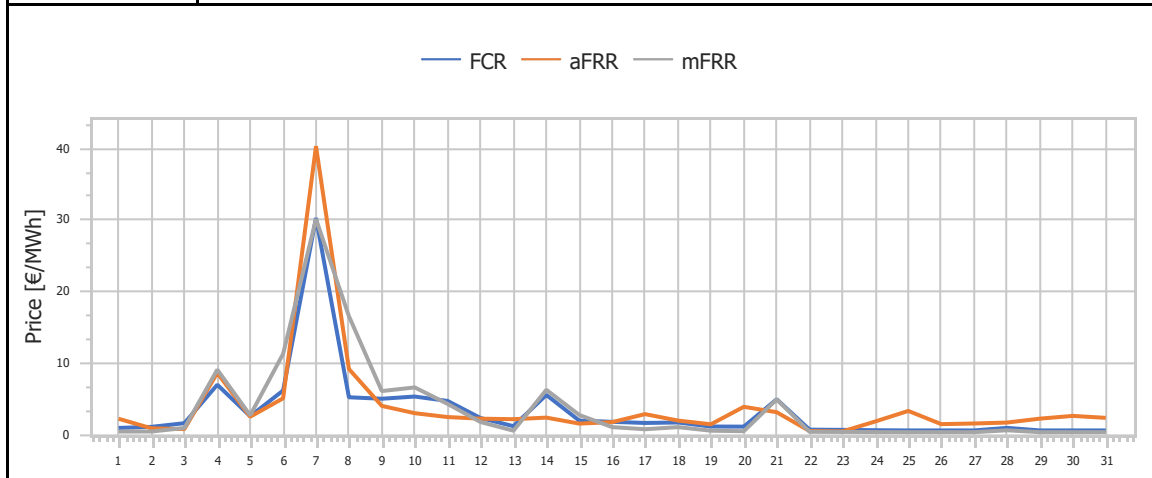
<b>Ref No</b>	Graph 3.7
<b>Title</b>	Net Activated Balancing energy
<b>Scope</b>	Integrated Scheduling Process (ISP)
<b>Analysis</b>	Daily



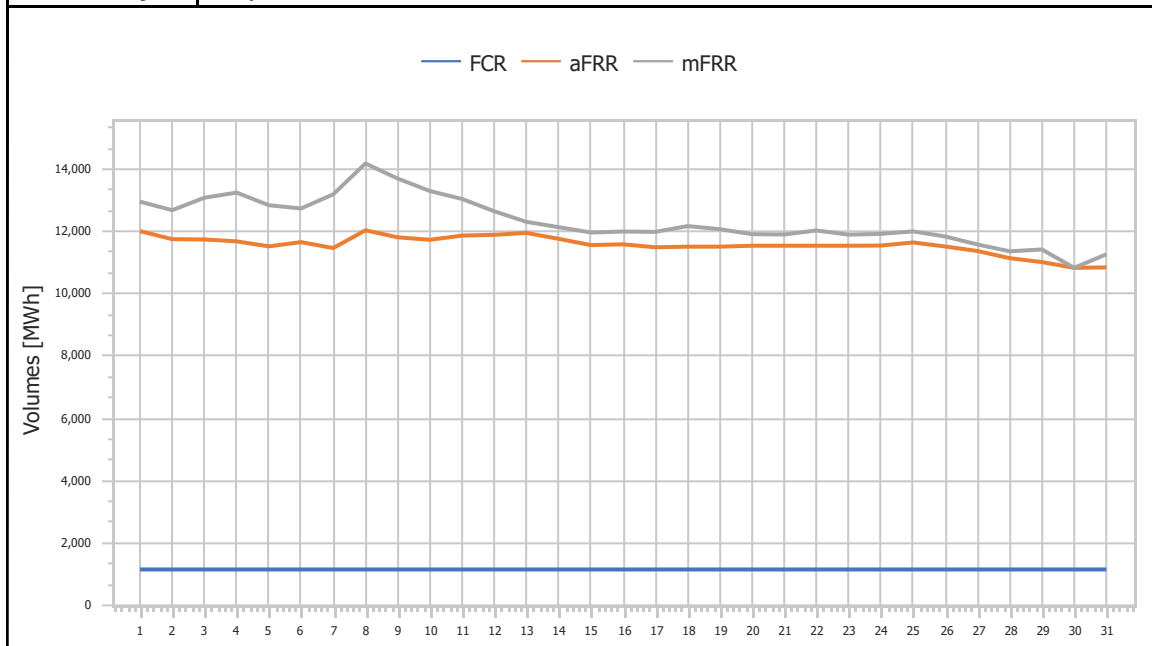
<b>Ref No</b>	Graph 3.8
<b>Title</b>	Upward Capacity Reserves Prices
<b>Scope</b>	Integrated Scheduling Process (ISP)
<b>Analysis</b>	Daily



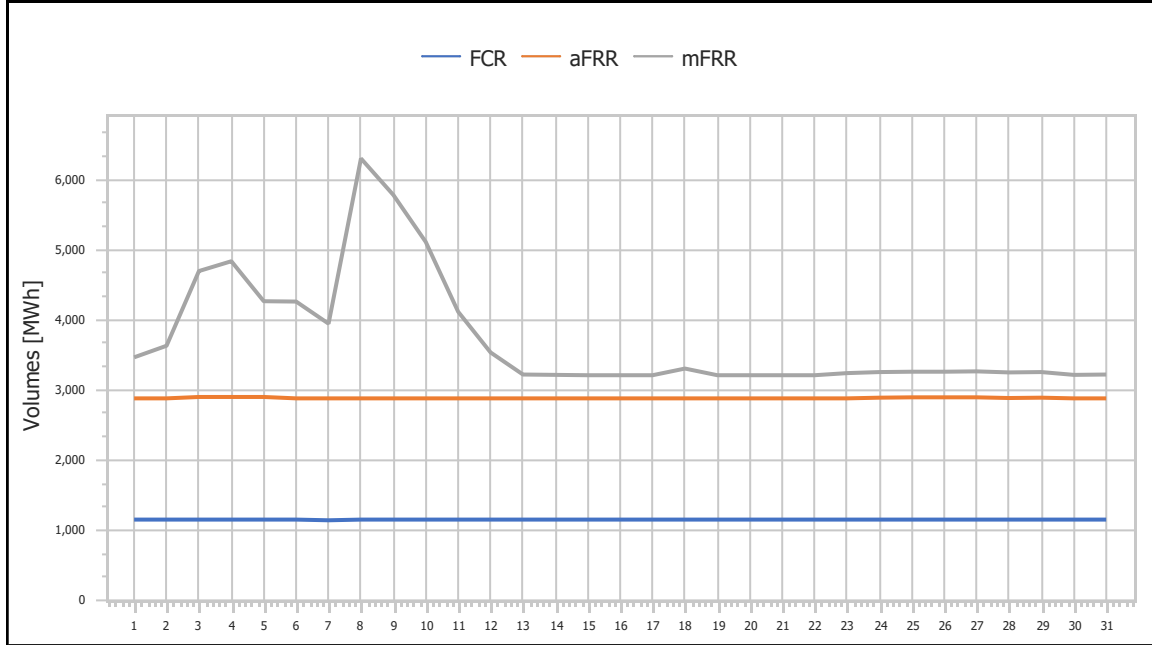
<b>Ref No</b>	Graph 3.9
<b>Title</b>	Downward Capacity Reserves Prices
<b>Scope</b>	Integrated Scheduling Process (ISP)
<b>Analysis</b>	Daily



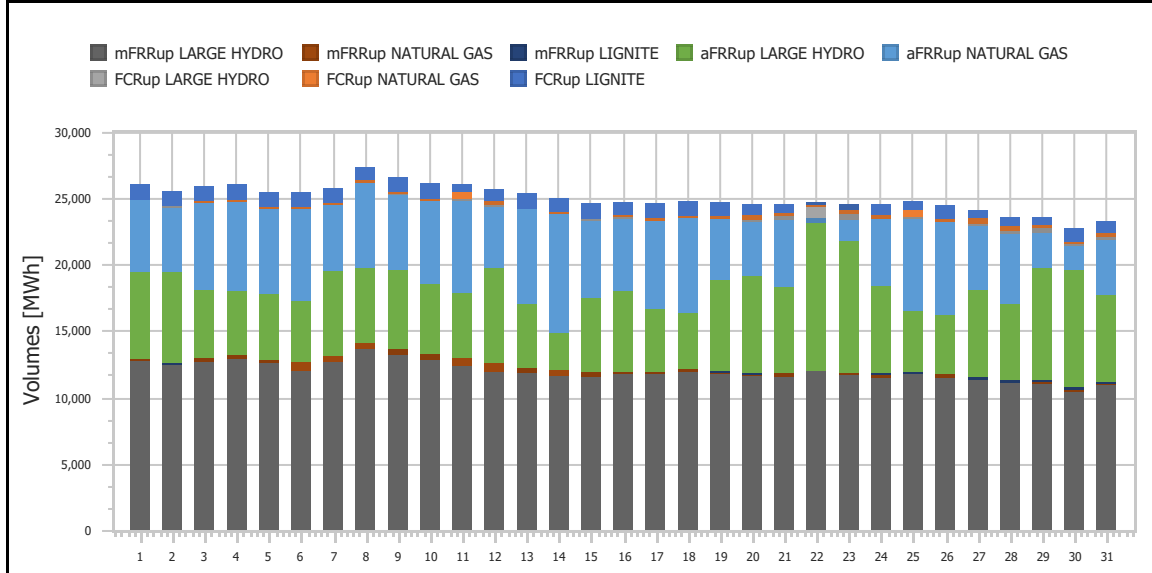
<b>Ref No</b>	Graph 3.10
<b>Title</b>	Upward Capacity Reserves Volumes
<b>Scope</b>	Integrated Scheduling Process (ISP)
<b>Analysis</b>	Daily

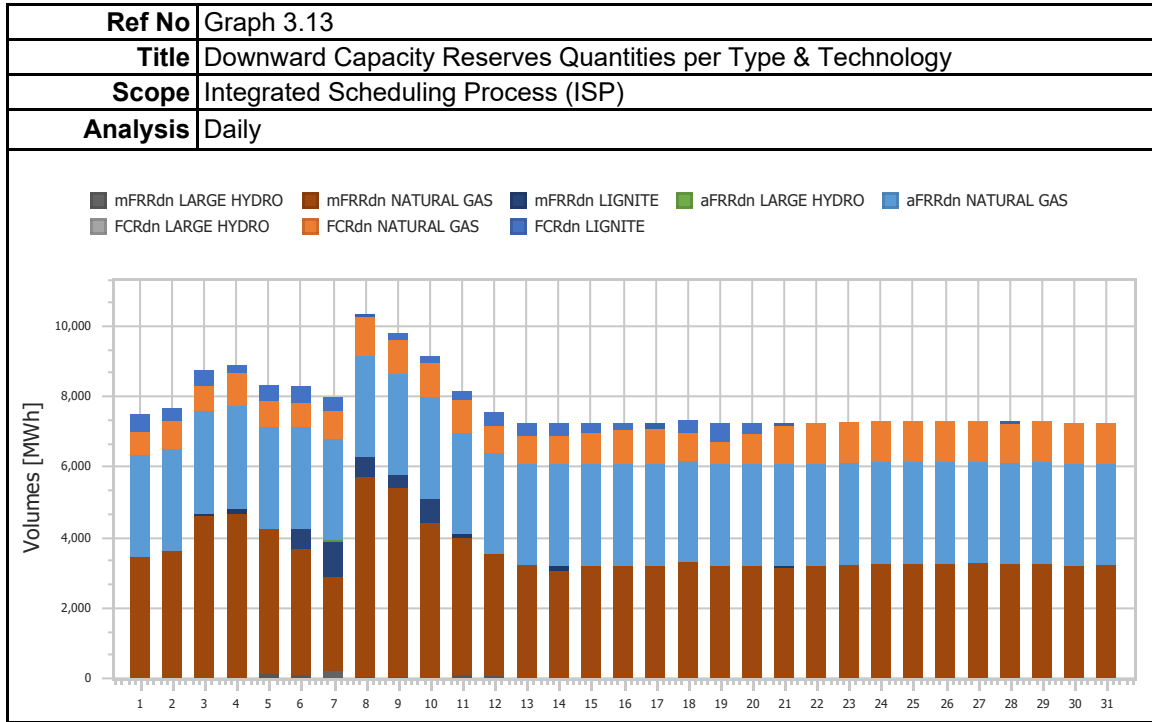


<b>Ref No</b>	Graph 3.11
<b>Title</b>	Downward Capacity Reserves Volumes
<b>Scope</b>	Integrated Scheduling Process (ISP)
<b>Analysis</b>	Daily

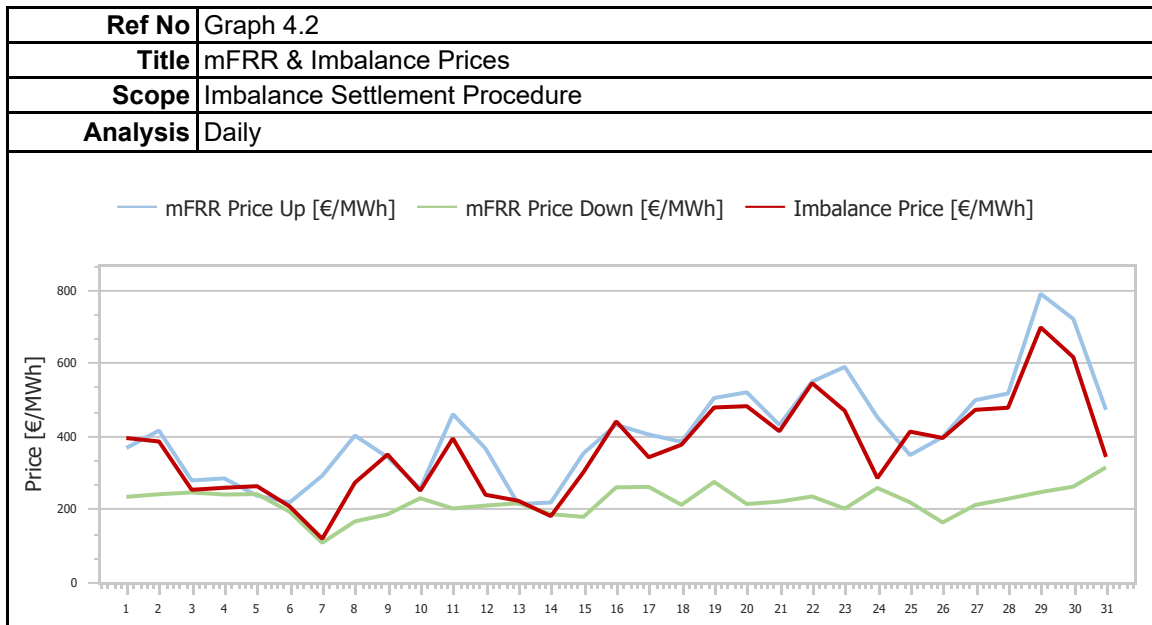
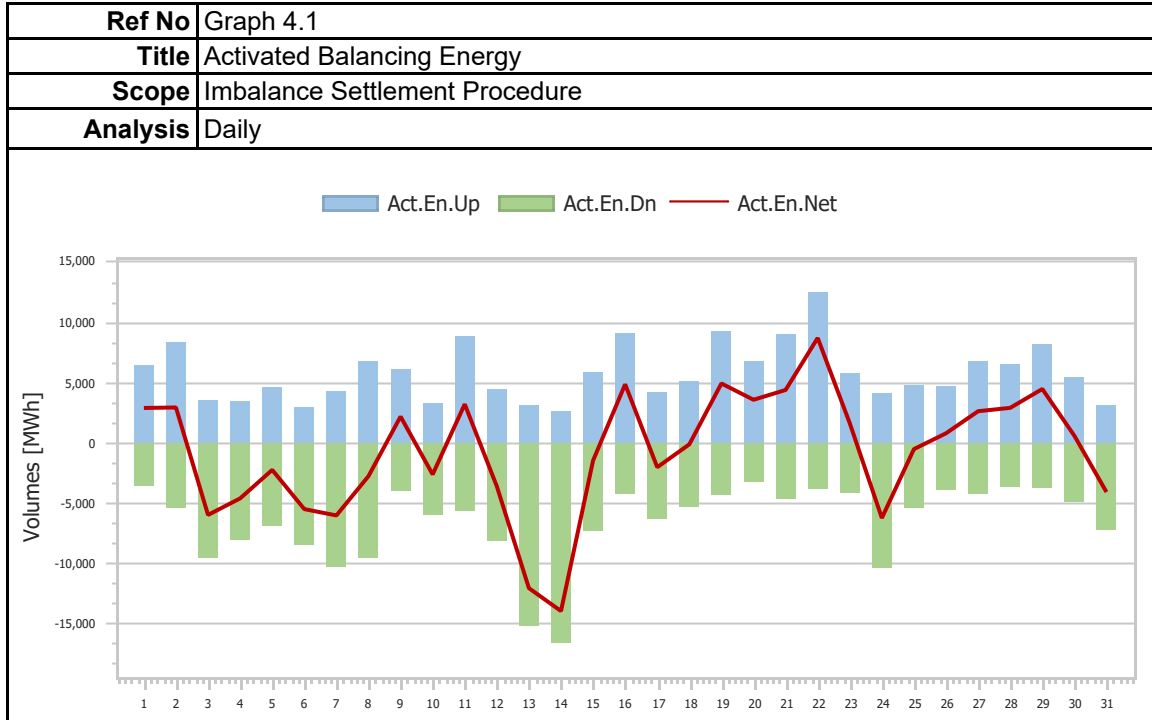


<b>Ref No</b>	Graph 3.12
<b>Title</b>	Upward Capacity Reserves Volumes per Technology
<b>Scope</b>	Integrated Scheduling Process (ISP)
<b>Analysis</b>	Daily

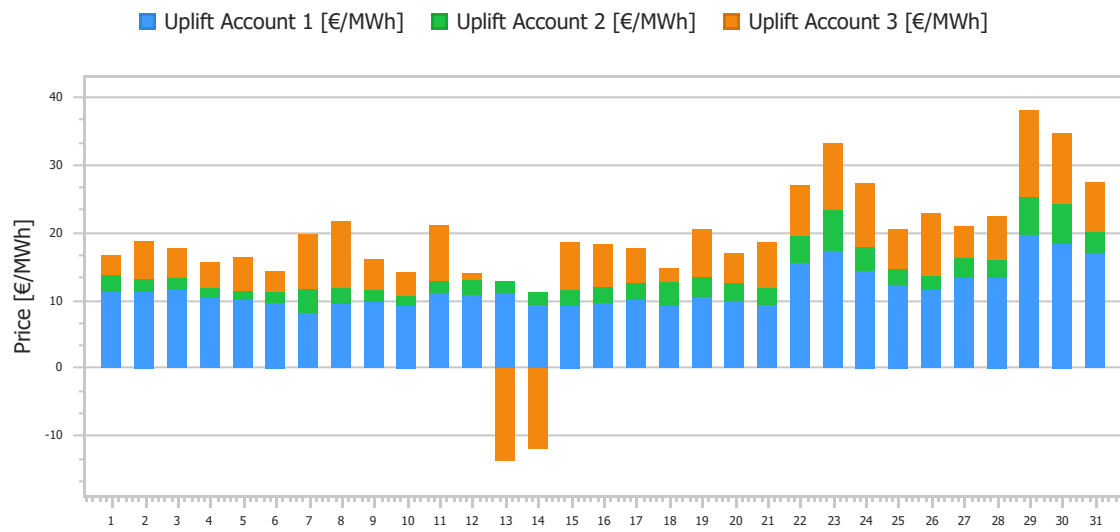




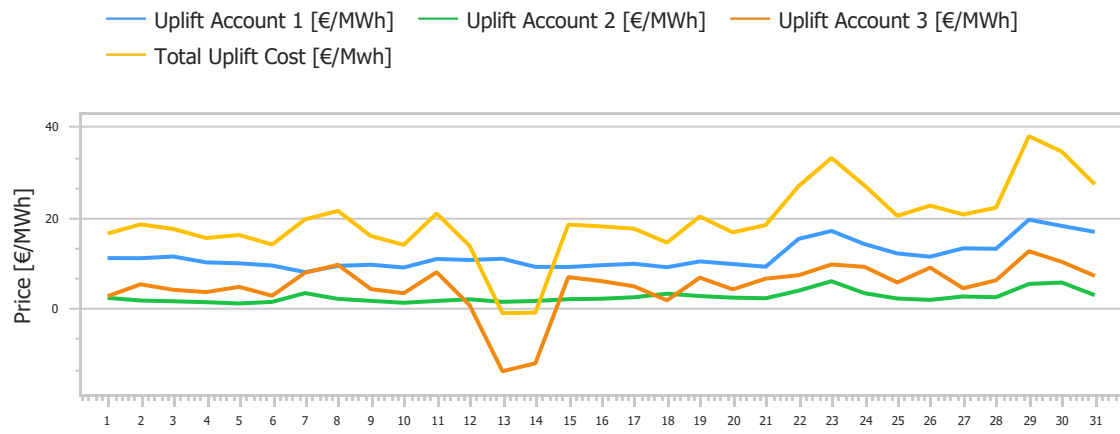
### 4. Imbalance Settlement Procedure



<b>Ref No</b>	Graph 4.3
<b>Title</b>	Uplift Accounts Cost
<b>Scope</b>	Imbalance Settlement Procedure
<b>Analysis</b>	Daily

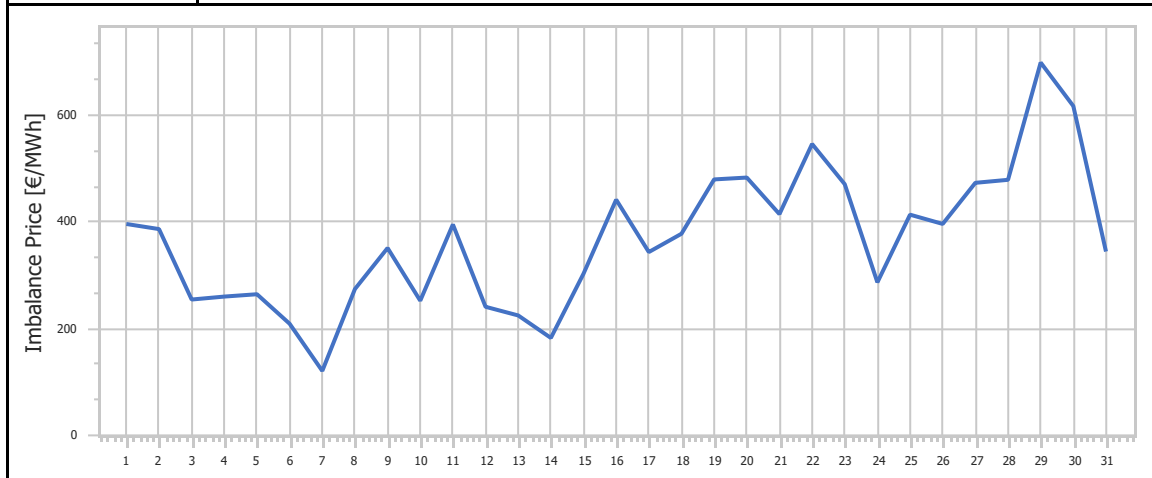


<b>Ref No</b>	Graph 4.4
<b>Title</b>	Uplift Accounts Cost
<b>Scope</b>	Imbalance Settlement Procedure
<b>Analysis</b>	Daily

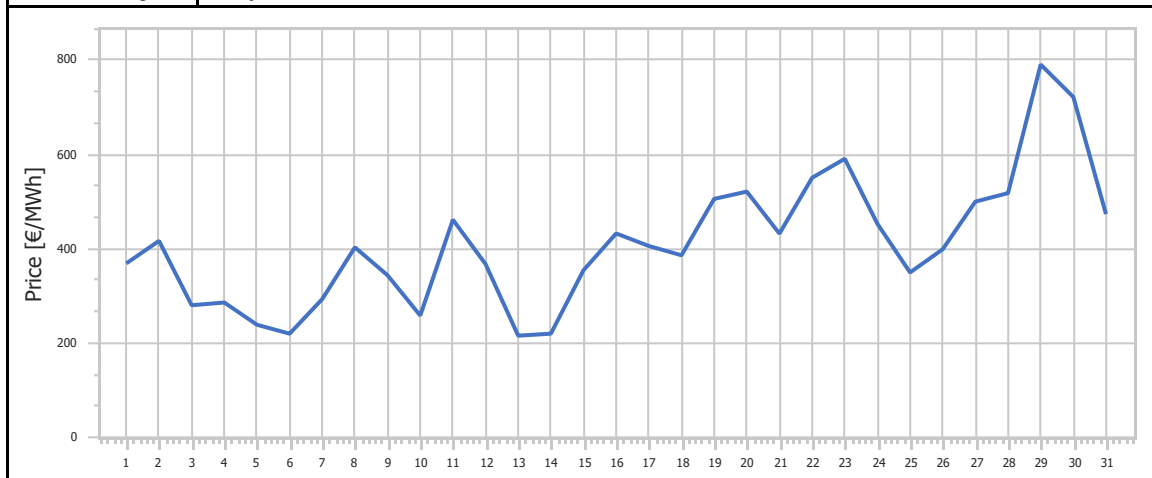




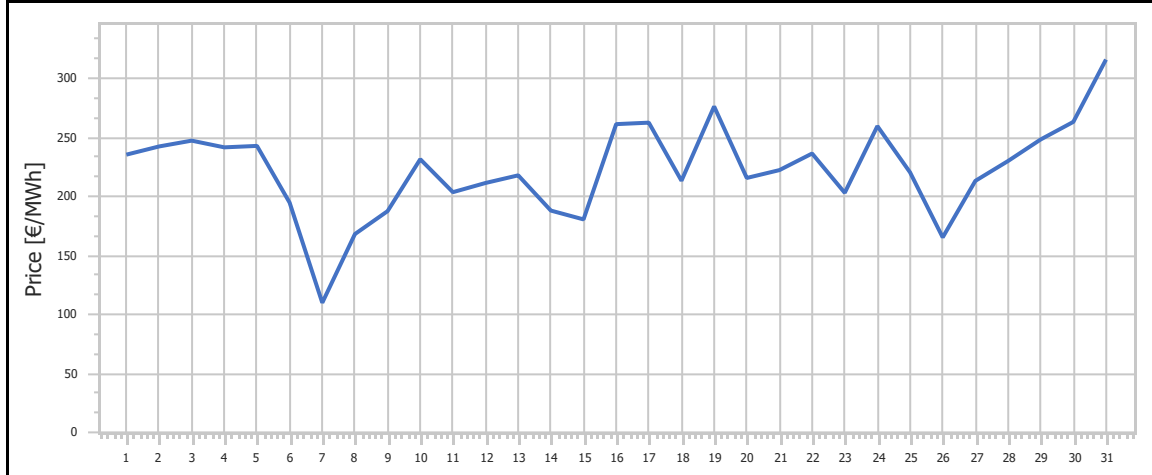
<b>Ref No</b>	Graph 4.5
<b>Title</b>	Imbalance Price
<b>Scope</b>	Imbalance Settlement Procedure
<b>Analysis</b>	Daily



<b>Ref No</b>	Graph 4.6
<b>Title</b>	mFRR Up Price
<b>Scope</b>	Imbalance Settlement Procedure
<b>Analysis</b>	Daily



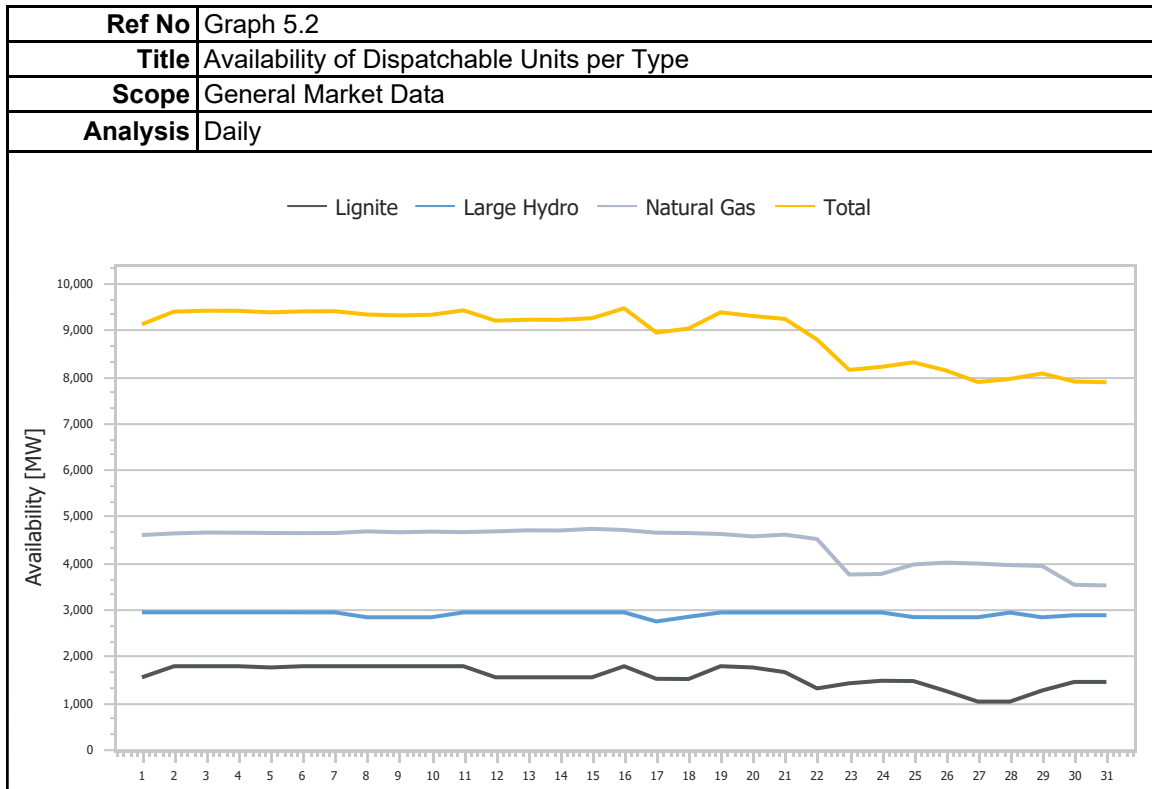
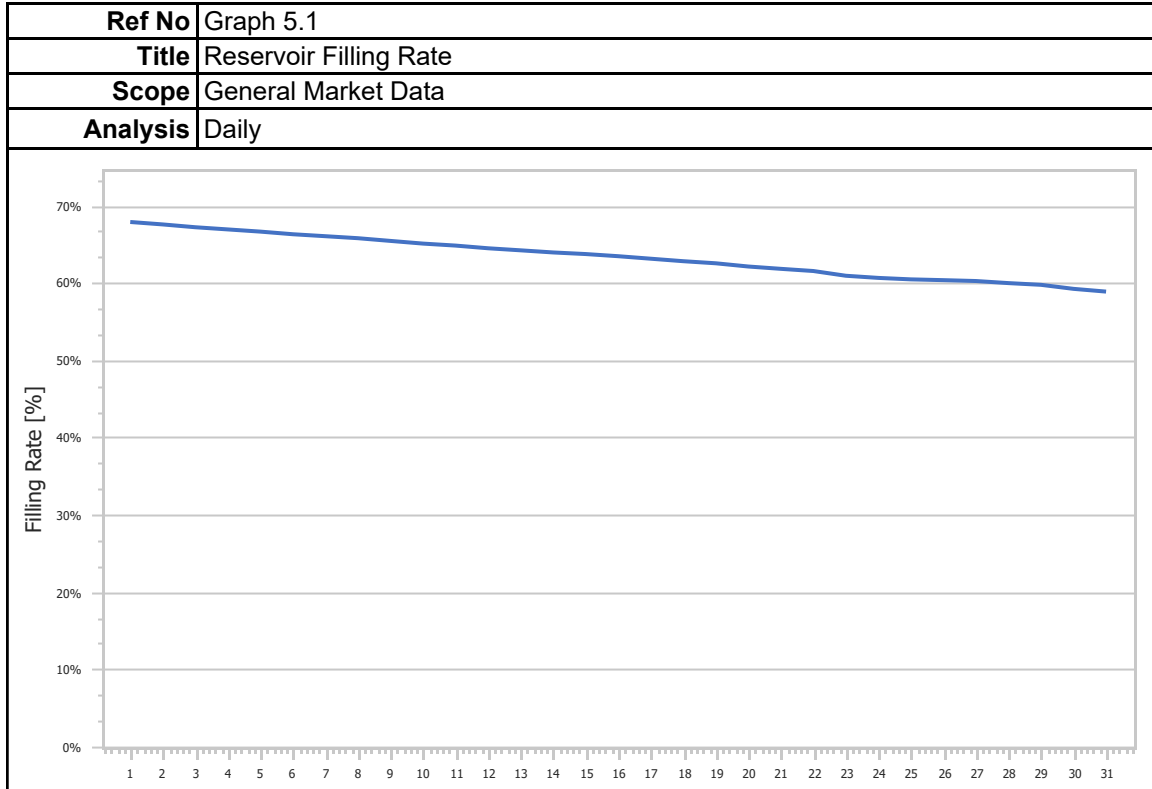
<b>Ref No</b>	Graph 4.7
<b>Title</b>	mFRR Down Price
<b>Scope</b>	Imbalance Settlement Procedure
<b>Analysis</b>	Daily



<b>Ref No</b>	Graph 4.8
<b>Title</b>	Balancing Energy Activation Direction
<b>Scope</b>	Imbalance Settlement Procedure
<b>Analysis</b>	Daily



### 5. General Market Data



## 1. Statistics

<b>Ref No</b>	Table 1.1			
<b>Title</b>	Market Shares per Aggregated Classification - SELL			
<b>Scope</b>	Day Ahead Market (DAM)			
<b>Analysis</b>	Monthly			
Classification	Quantity [MWh]	Share [%]	Value [EUR]	Share [%]
Lignite	847,537.343	15.76%	378,179,091.96€	16.19%
Crete Conventional	249,203.840	4.63%	112,458,940.24€	4.81%
Natural Gas	2,221,675.668	41.32%	995,163,435.76€	42.60%
Large Hydro	329,321.979	6.12%	164,883,982.60€	7.06%
RES	1,365,096.946	25.39%	535,238,729.65€	22.91%
Crete Renewables	67,446.000	1.25%	27,388,173.80€	1.17%
Imports	296,796.030	5.52%	123,003,862.96€	5.26%
<b>Total</b>	<b>5,377,077.802</b>	<b>100.00%</b>	<b>2,336,316,216.97€</b>	<b>100.00%</b>

<b>Ref No</b>	Table 1.2								
<b>Title</b>	Statistics per Aggregated Classification - SELL								
<b>Scope</b>	Day Ahead Market (DAM)								
<b>Analysis</b>	Monthly								
	MCP [€/MWh]	Total [MWh]	Lignite [MWh]	CR Conv [MWh]	Natural Gas [MWh]	Hydro [MWh]	RES [MWh]	CR RES [MWh]	Imports [MWh]
<b>Total</b>	-	5,377,077.80	847,537.34	249,203.84	2,221,675.67	329,321.98	1,365,096.95	67,446.00	296,796.03
<b>Average</b>	436.53	173,454.12	27,339.91	8,038.83	71,666.96	10,623.29	44,035.39	2,175.68	9,574.07
<b>Min</b>	287.25	143,383.31	18,048.00	7,105.30	38,639.39	7,118.00	24,926.73	603.00	4,477.64
<b>Min day</b>	7	28	12	7	7	26	23	24	24
<b>Max</b>	697.41	202,413.91	36,704.00	9,525.20	88,024.40	13,534.82	81,134.42	3,959.00	22,893.70
<b>Max day</b>	31	1	23	25	19	22	8	2	7
<b>Spread</b>	410.16	59,030.59	18,656.00	2,419.90	49,385.01	6,416.82	56,207.69	3,356.00	18,416.06
<b>Standard Deviation</b>	103.02	17,107.68	5,103.86	621.10	10,713.67	1,480.05	16,213.51	1,079.08	4,914.06

<b>Ref No</b>	Table 1.3
<b>Title</b>	Market Shares per Aggregated Classification - BUY
<b>Scope</b>	Day Ahead Market (DAM)
<b>Analysis</b>	Monthly

Classification	Quantity [MWh]	Share [%]	Value [EUR]	Share [%]
System Losses	110,231.000	2.05%	48,386,831.76€	2.07%
Crete Load	350,383.100	6.52%	154,164,369.69€	6.60%
HV Load	650,833.046	12.10%	281,566,122.45€	12.05%
MV Load	873,976.462	16.25%	379,555,101.72€	16.25%
LV Load	2,694,089.843	50.10%	1,177,414,028.11€	50.40%
PUMP	12,067.708	0.22%	3,352,614.47€	0.14%
Exports	685,496.600	12.75%	291,877,367.39€	12.49%
<b>Total</b>	<b>5,377,077.762</b>	<b>100.00%</b>	<b>2,336,316,435.59€</b>	<b>100.00%</b>

<b>Ref No</b>	Table 1.4
<b>Title</b>	Statistics per Aggregated Classification - BUY
<b>Scope</b>	Day Ahead Market (DAM)
<b>Analysis</b>	Monthly

	MCP [€/MWh]	Total [MWh]	Sys Losses [MWh]	CR Load [MWh]	HV [MWh]	MV [MWh]	LV [MWh]	PUMP [MWh]	Exports [MWh]
<b>Total</b>	-	5,377,077.76	110,231.00	350,383.10	650,833.05	873,976.46	2,694,089.84	12,067.71	685,496.60
<b>Average</b>	436.53	173,454.12	3,555.84	11,302.68	20,994.61	28,192.79	86,906.12	524.68	22,112.79
<b>Min</b>	287.25	143,383.34	2,432.50	9,077.00	19,855.94	20,066.03	70,851.73	125.00	13,249.00
<b>Min day</b>	7	28	15	28	12	15	15	19	23
<b>Max</b>	697.41	202,413.80	4,956.50	12,565.00	22,615.42	34,542.77	105,933.23	1,330.00	28,082.00
<b>Max day</b>	31	1	8	2	27	4	1	26	8
<b>Spread</b>	410.16	59,030.45	2,524.00	3,488.00	2,759.47	14,476.74	35,081.50	1,205.00	14,833.00
<b>Standard Deviation</b>	103.02	17,107.66	617.62	900.92	743.31	4,067.38	10,110.40	259.19	3,759.14

## 2. Market Shares

<b>Ref No</b>	Table 2.1.1			
<b>Title</b>	Market Shares - Upward Capacity Reserves Volumes per Type			
<b>Scope</b>	Balancing Market (BM)			
<b>Analysis</b>	Monthly			
Type	Quantity [MW]	Share [%]	Value [EUR]	Share [%]
aFRR	1,401,788.210	66.36%	8,839,071.00€	78.12%
FCR	136,998.750	6.49%	1,322,414.80€	11.69%
mFRR	573,609.190	27.15%	1,153,352.05€	10.19%
<b>Total</b>	<b>2,112,396.150</b>	<b>100.00%</b>	<b>11,314,837.85€</b>	<b>100.00%</b>

<b>Ref No</b>	Table 2.1.2			
<b>Title</b>	Market Shares - Downward Capacity Reserves per Type			
<b>Scope</b>	Balancing Market(BM)			
<b>Analysis</b>	Monthly			
Type	Quantity [MW]	Share [%]	Value [EUR]	Share [%]
aFRR	354,916.630	37.26%	487,866.23€	42.51%
FCR	141,665.640	14.87%	150,281.00€	13.09%
mFRR	455,924.900	47.87%	509,549.56€	44.40%
<b>Total</b>	<b>952,507.180</b>	<b>100.00%</b>	<b>1,147,696.78€</b>	<b>100.00%</b>

<b>Ref No</b>	Table 2.1.3				
<b>Title</b>	Market Shares - Upward Activated Balancing Energy per Type				
<b>Scope</b>	Balancing Market (BM)				
<b>Analysis</b>	Monthly				
<b>Type</b>	<b>Quantity [MWh]</b>	<b>Share [%]</b>	<b>Value [EUR]</b>	<b>Share [%]</b>	
aFRR	81,029.170	44.95%	42,748,681.95€	44.48%	
mFRR	99,250.260	55.05%	53,358,499.16€	55.52%	
<b>Total</b>	<b>180,279.430</b>	<b>100.00%</b>	<b>96,107,181.11€</b>	<b>100.00%</b>	

<b>Ref No</b>	Table 2.1.4				
<b>Title</b>	Market Shares - Downward Activated Balancing Energy per Type				
<b>Scope</b>	Balancing Market (BM)				
<b>Analysis</b>	Monthly				
<b>Type</b>	<b>Quantity [MWh]</b>	<b>Share [%]</b>	<b>Value [EUR]</b>	<b>Share [%]</b>	
aFRR	40,334.430	19.87%	7,073,528.87€	16.40%	
mFRR	162,666.460	80.13%	36,044,912.90€	83.60%	
<b>Total</b>	<b>203,000.890</b>	<b>100.00%</b>	<b>43,118,441.77€</b>	<b>100.00%</b>	

### 3. Market Overview

<b>Ref No</b>	Table 3.1
<b>Title</b>	Total Transactions Quantity per Market
<b>Scope</b>	DAM, IDM, Balancing Energy Market
<b>Analysis</b>	Monthly

Market	Quantity [MWh]	Share [%]
DAM	5,377,077.80	95.92%
IDMA1	183,959.07	3.28%
IDMA2	45,306.81	0.81%
IDMA3	22,083.07	0.39%
IDM (Total)	251,348.95	4.48%
Balancing Energy (Up)	180,279.43	3.22%
Balancing Energy (Dn)	203,000.89	3.62%
Balancing Energy (Total)	-22,721.46	-0.41%
<b>Total</b>	<b>5,605,705.29</b>	<b>100.00%</b>

<b>Ref No</b>	Table 3.2
<b>Title</b>	Total Transactions Value per Market
<b>Scope</b>	DAM, IDM, Balancing Energy Market
<b>Analysis</b>	Monthly

Market	Value [EUR]	Share [%]
DAM	2,336,316,216.97€	92.86%
IDMA1	86,046,210.53€	3.42%
IDMA2	17,815,326.37€	0.71%
IDMA3	10,218,945.98€	0.41%
IDM (Total)	114,080,482.88€	4.53%
Balancing Capacity (Up)	11,314,837.85€	0.45%
Balancing Capacity (Dn)	1,147,696.78€	0.05%
Balancing Capacity (Total)	12,462,534.63€	0.50%
Balancing Energy (Up)	96,107,181.11€	3.82%
Balancing Energy (Dn)	43,118,441.77€	1.71%
Balancing Energy (Total)	52,988,739.34€	2.11%
Balancing Market (Total)	65,451,273.97€	2.60%
<b>Total</b>	<b>2,515,847,973.82€</b>	<b>100.00%</b>