

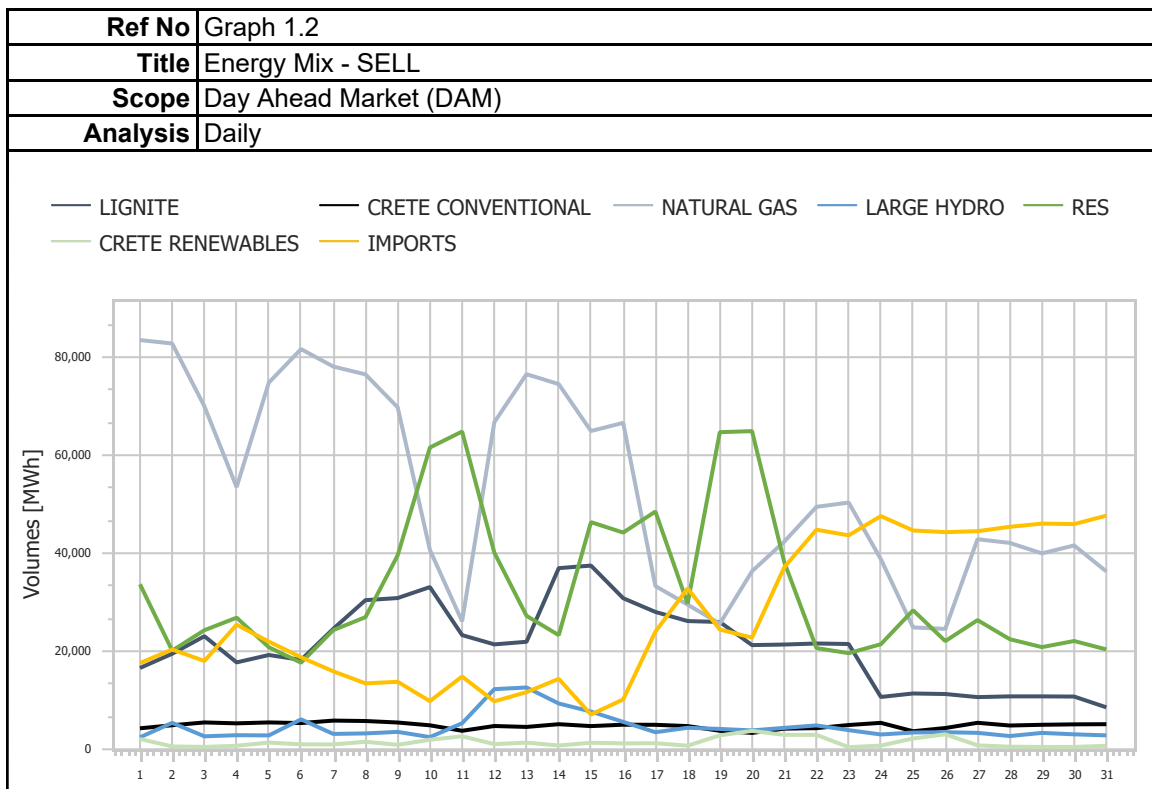
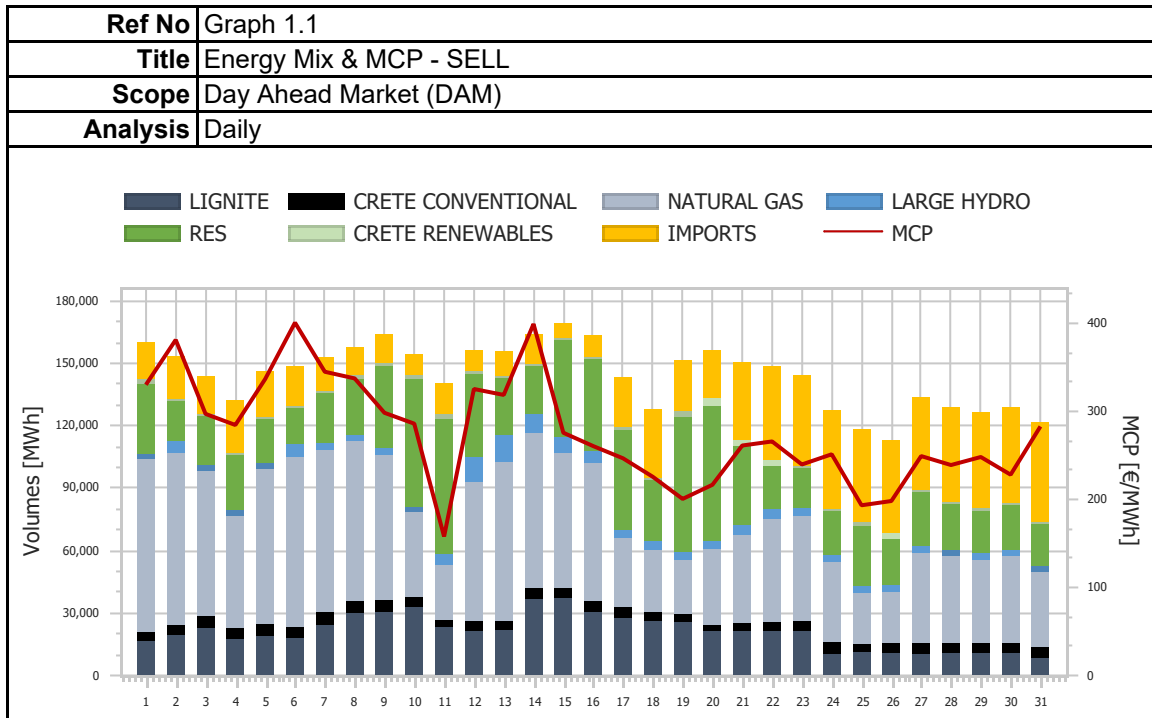
# Market Monitoring Report

Monthly - Public - 2

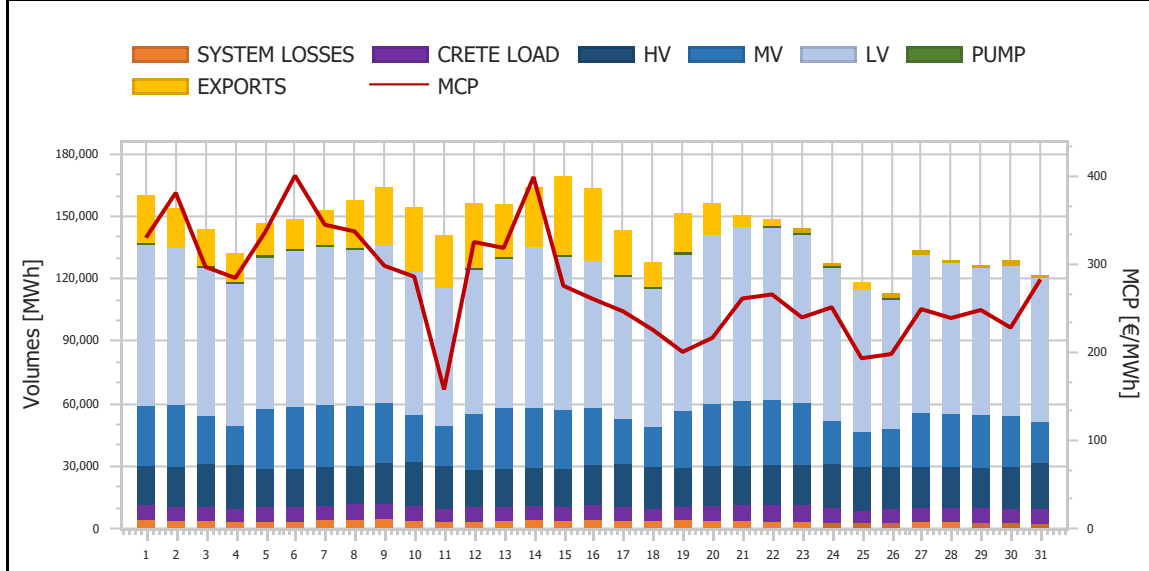
**12-2022**



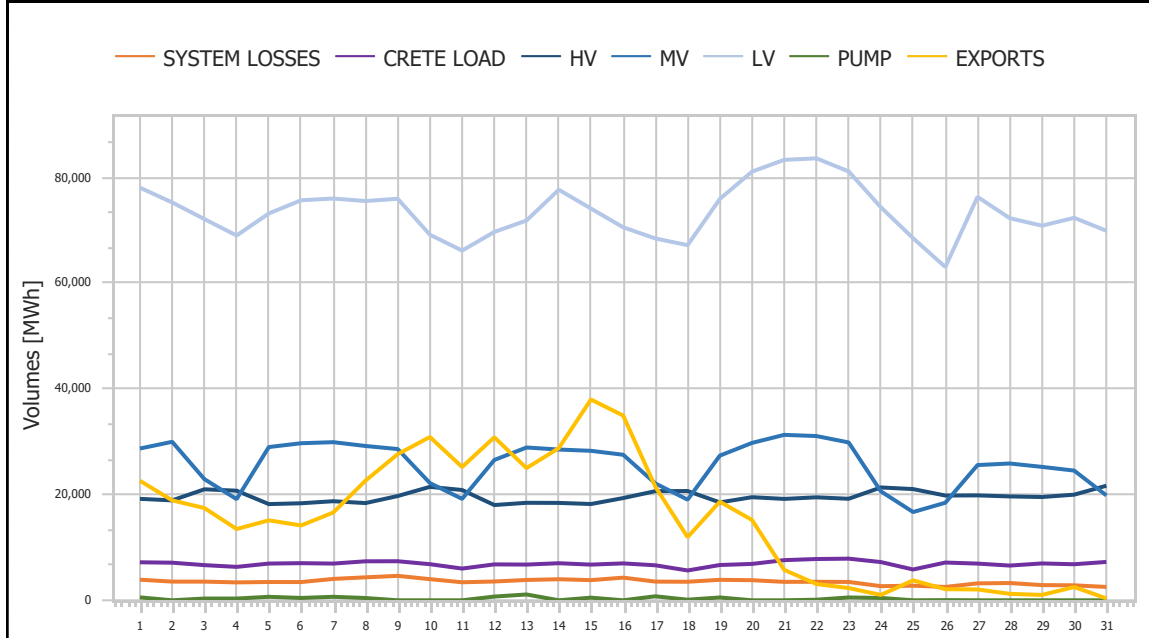
# 1. Day Ahead Market (DAM)



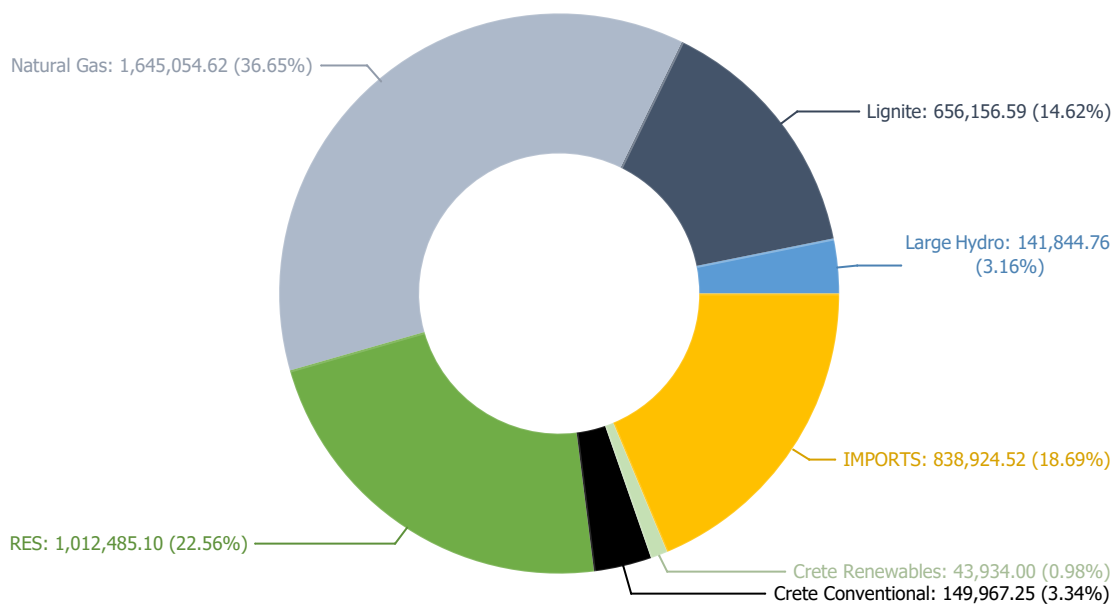
<b>Ref No</b>	Graph 1.3
<b>Title</b>	Energy Mix & MCP - BUY
<b>Scope</b>	Day Ahead Market (DAM)
<b>Analysis</b>	Daily



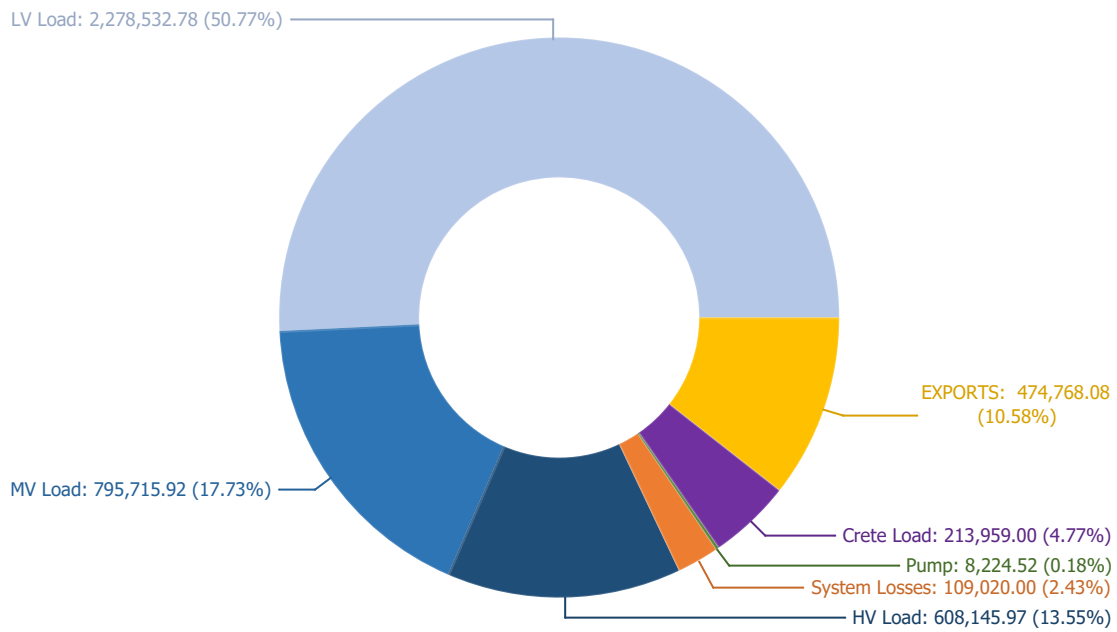
<b>Ref No</b>	Graph 1.4
<b>Title</b>	Energy Mix - BUY
<b>Scope</b>	Day Ahead Market (DAM)
<b>Analysis</b>	Daily



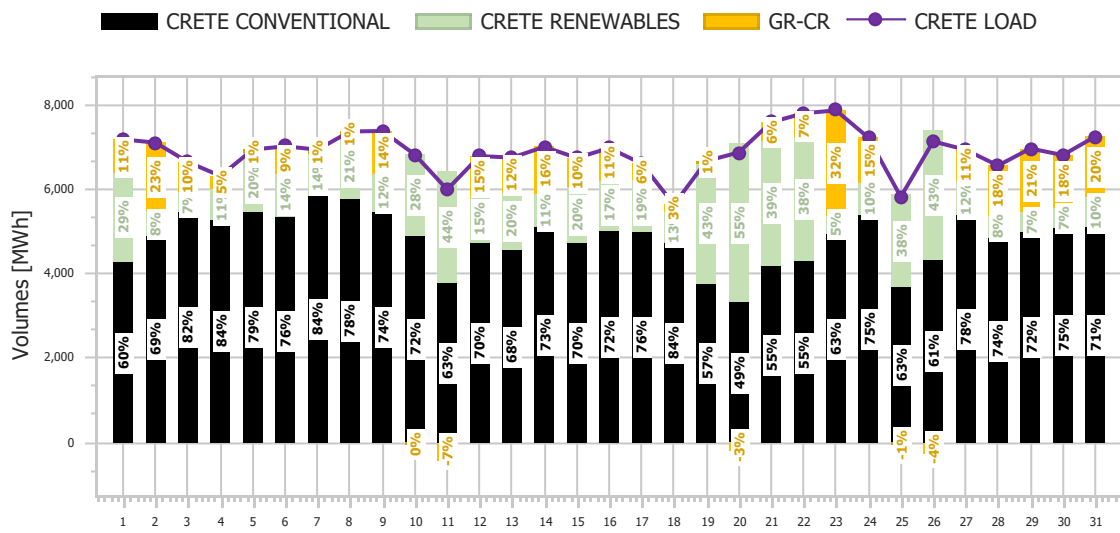
<b>Ref No</b>	Graph 1.5
<b>Title</b>	Energy Mix - SELL
<b>Scope</b>	Day Ahead Market (DAM)
<b>Analysis</b>	Daily



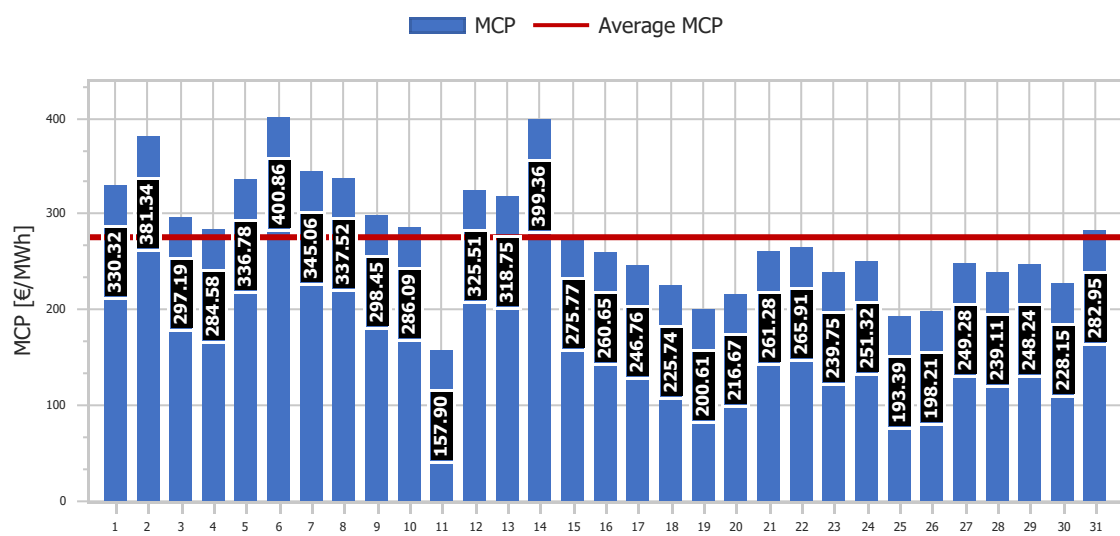
<b>Ref No</b>	Graph 1.6
<b>Title</b>	Energy Mix - BUY
<b>Scope</b>	Day Ahead Market (DAM)
<b>Analysis</b>	Daily



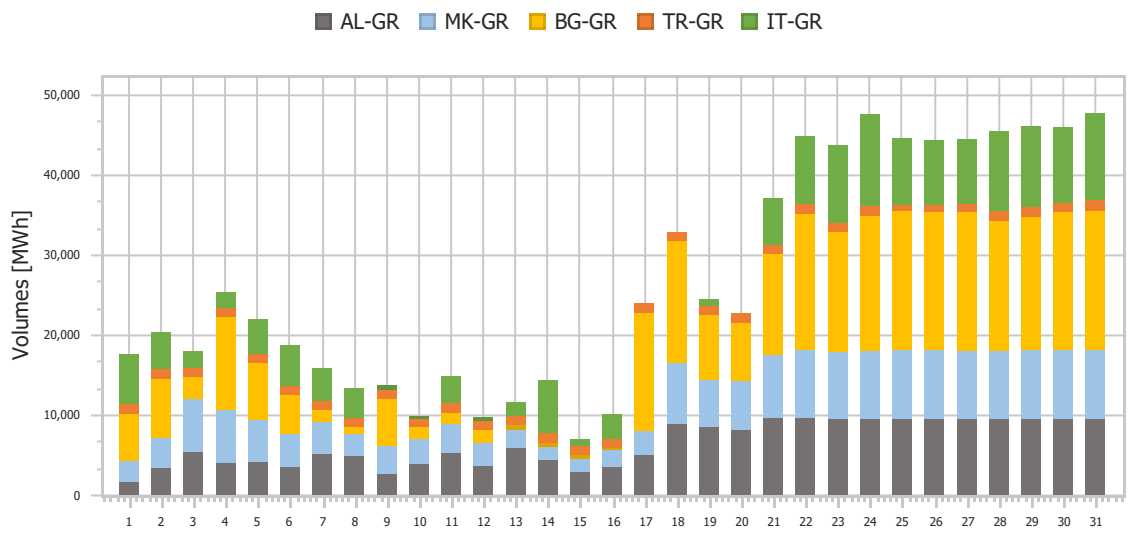
<b>Ref No</b>	Graph 1.7
<b>Title</b>	Crete Energy Mix
<b>Scope</b>	Day Ahead Market (DAM)
<b>Analysis</b>	Daily



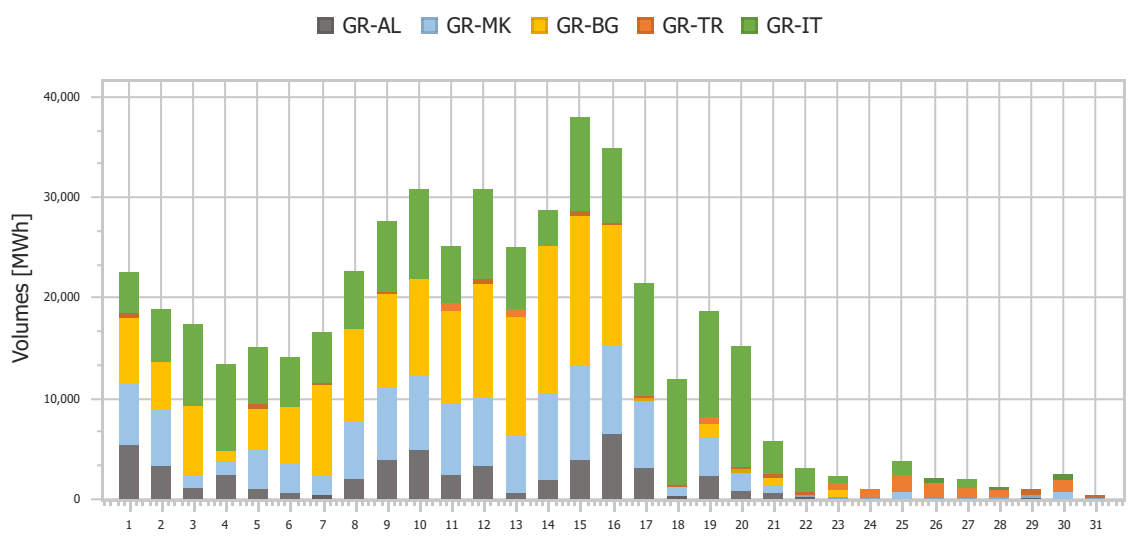
<b>Ref No</b>	Graph 1.8
<b>Title</b>	Market Clearing Price (MCP)
<b>Scope</b>	Day Ahead Market (DAM)
<b>Analysis</b>	Daily



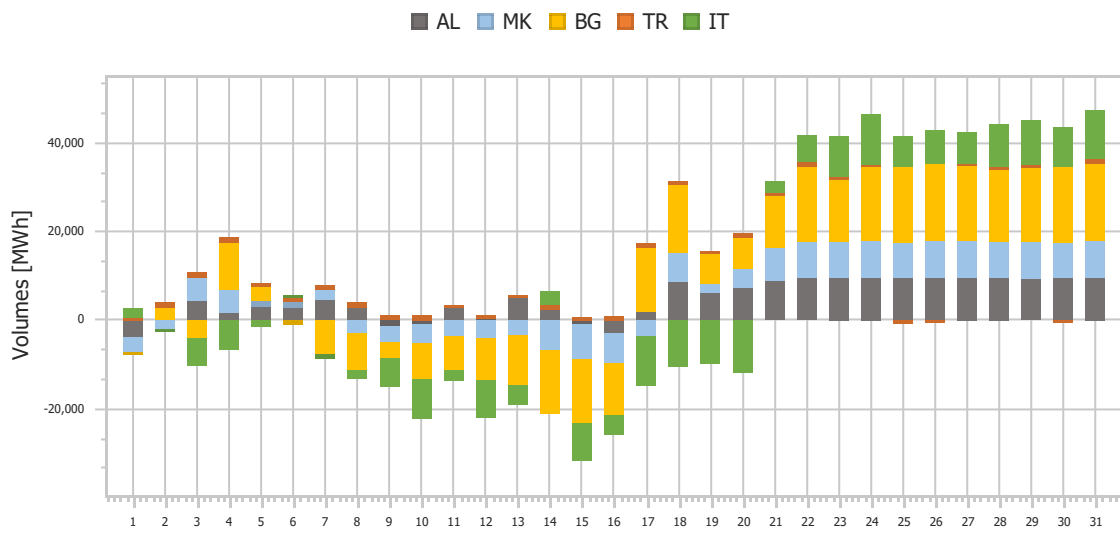
<b>Ref No</b>	Graph 1.9
<b>Title</b>	Imports per Border
<b>Scope</b>	Day Ahead Market (DAM)
<b>Analysis</b>	Daily



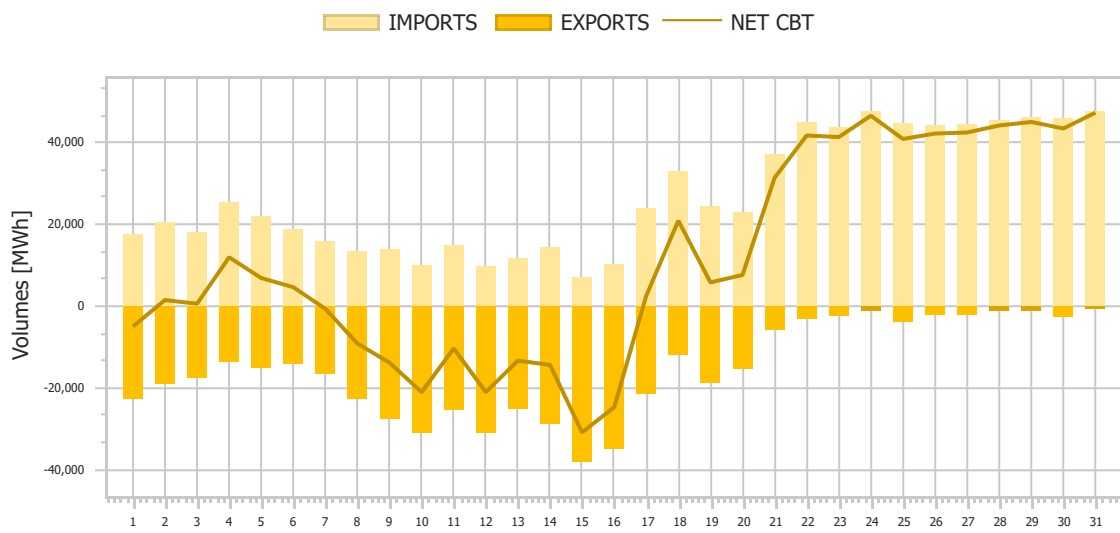
<b>Ref No</b>	Graph 1.10
<b>Title</b>	Exports per Border
<b>Scope</b>	Day Ahead Market (DAM)
<b>Analysis</b>	Daily



<b>Ref No</b>	Graph 1.11
<b>Title</b>	Net Imports per Border
<b>Scope</b>	Day Ahead Market (DAM)
<b>Analysis</b>	Daily

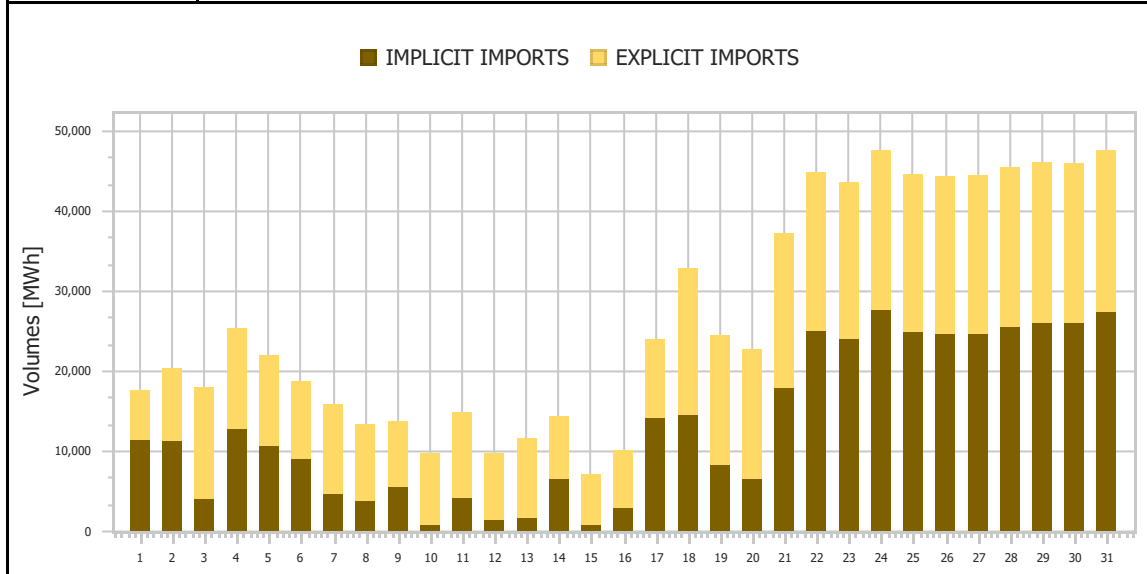


<b>Ref No</b>	Graph 1.12
<b>Title</b>	Total Imports & Exports
<b>Scope</b>	Day Ahead Market (DAM)
<b>Analysis</b>	Daily

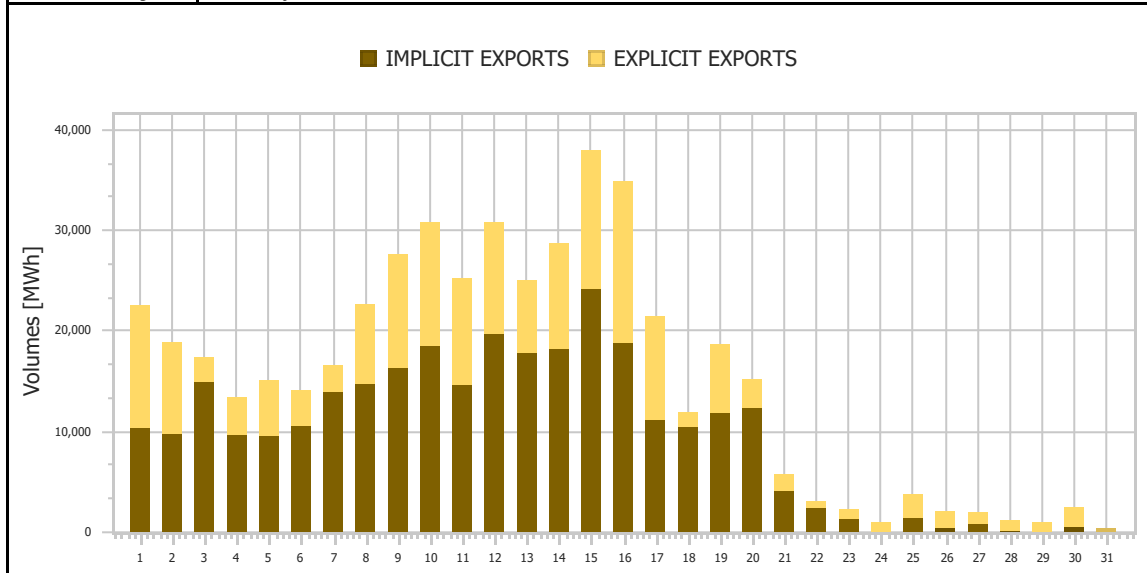




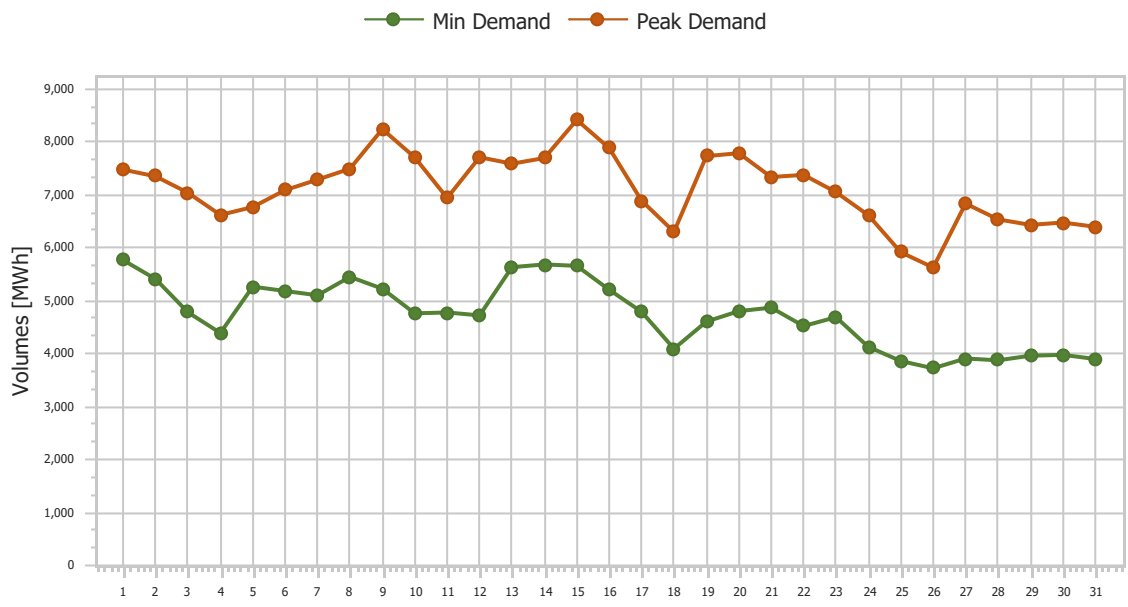
<b>Ref No</b>	Graph 1.13
<b>Title</b>	Imports (Implicit/Explicit)
<b>Scope</b>	Day Ahead Market (DAM)
<b>Analysis</b>	Daily



<b>Ref No</b>	Graph 1.14
<b>Title</b>	Exports (Implicit/Explicit)
<b>Scope</b>	Day Ahead Market (DAM)
<b>Analysis</b>	Monthly

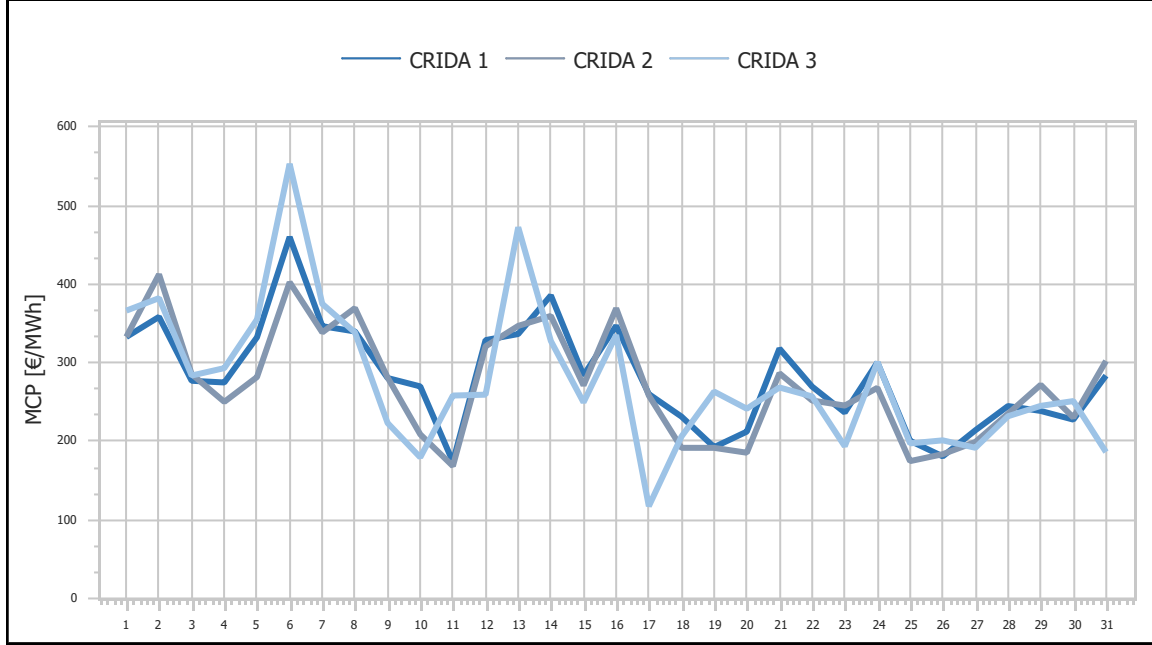


<b>Ref No</b>	Graph 1.15
<b>Title</b>	Min & Peak Demand
<b>Scope</b>	Day Ahead Market (DAM)
<b>Analysis</b>	Daily

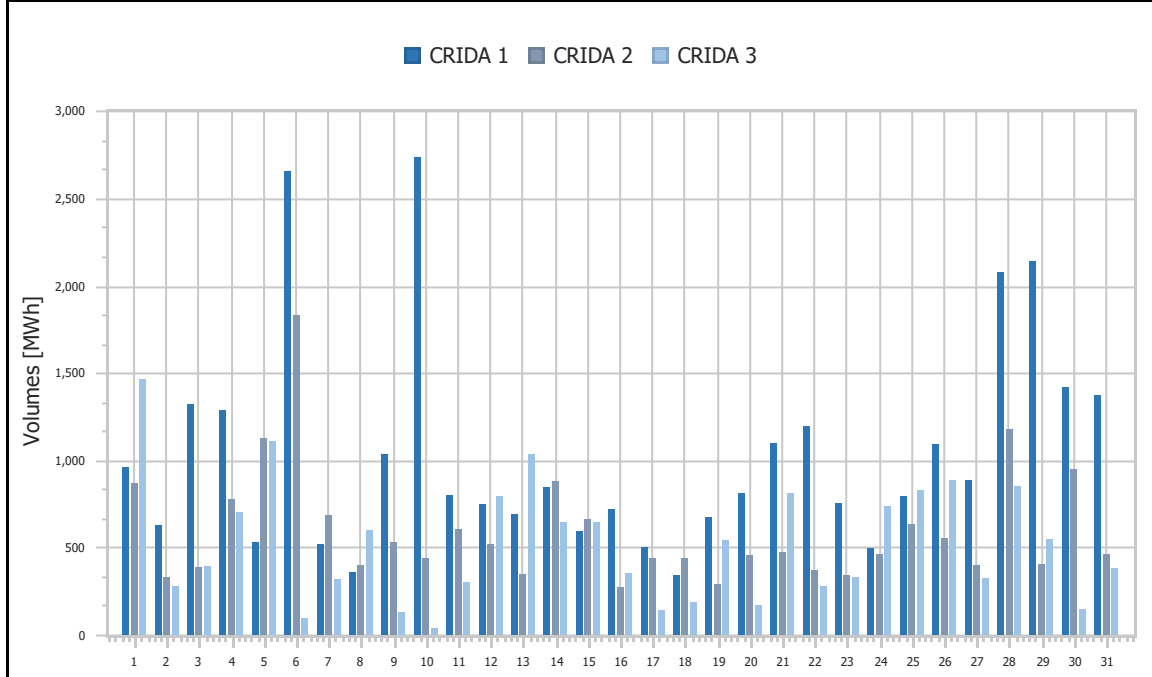


## 2. Intra-Day Market (IDM)

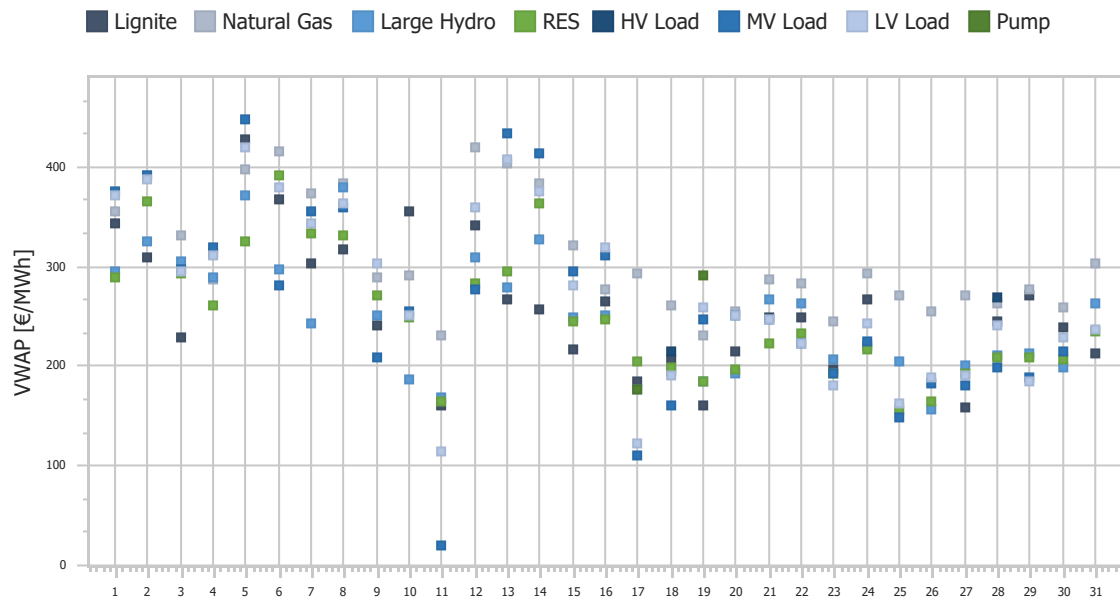
<b>Ref No</b>	Graph 2.1
<b>Title</b>	Market Clearing Price (MCP)
<b>Scope</b>	Complementary Regional Intraday Auctions
<b>Analysis</b>	Daily



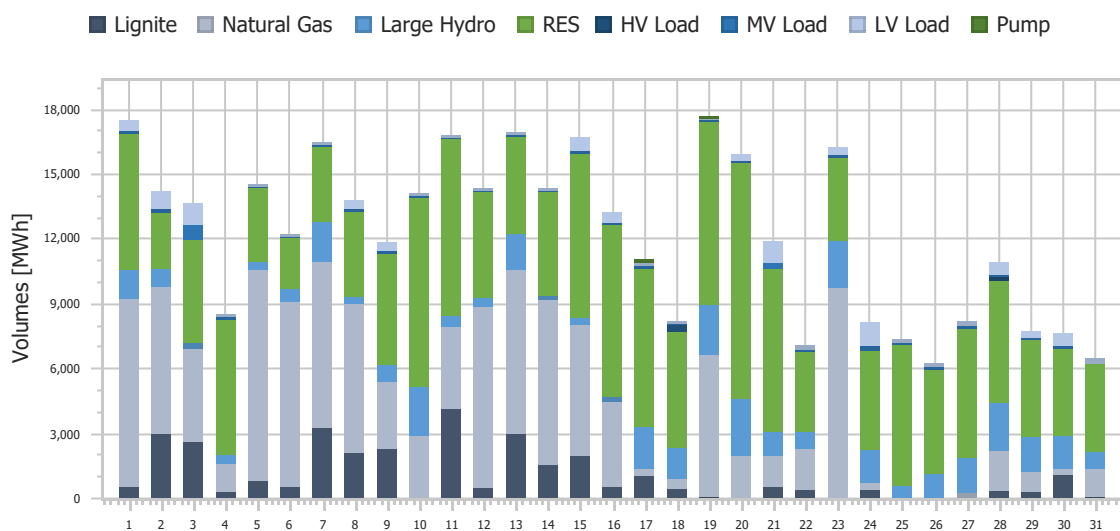
<b>Ref No</b>	Graph 2.2
<b>Title</b>	Transactions Volume
<b>Scope</b>	Complementary Regional Intraday Auctions
<b>Analysis</b>	Daily



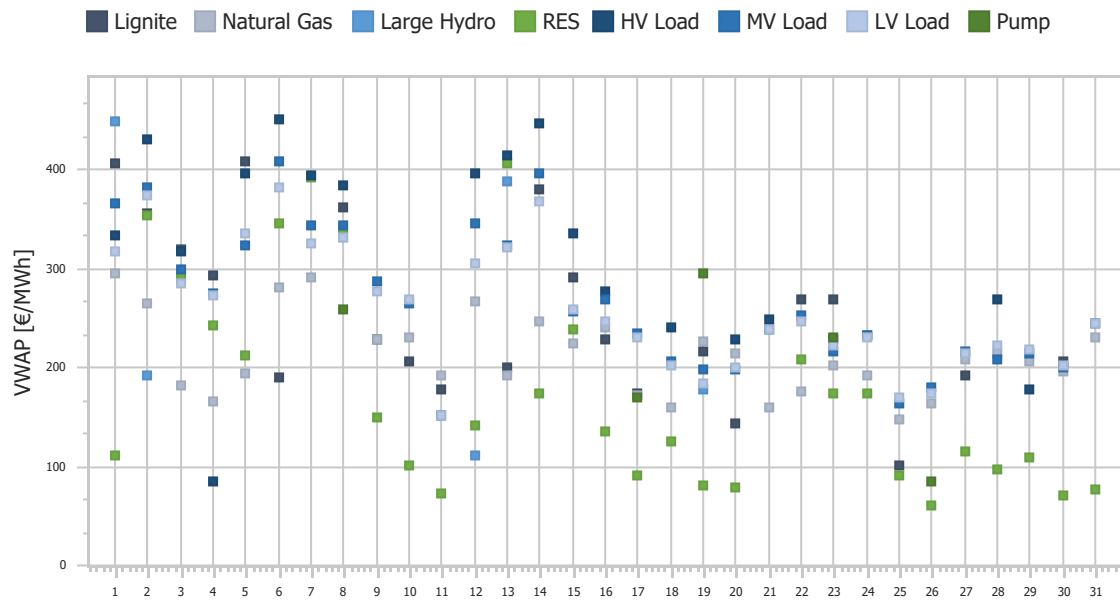
<b>Ref No</b>	Graph 2.3.1
<b>Title</b>	Volume-Weighted Average Price (VWAP) - SELL Side
<b>Scope</b>	Continuous Intra-Day Trading (XBID) - excl. CBT
<b>Analysis</b>	Daily



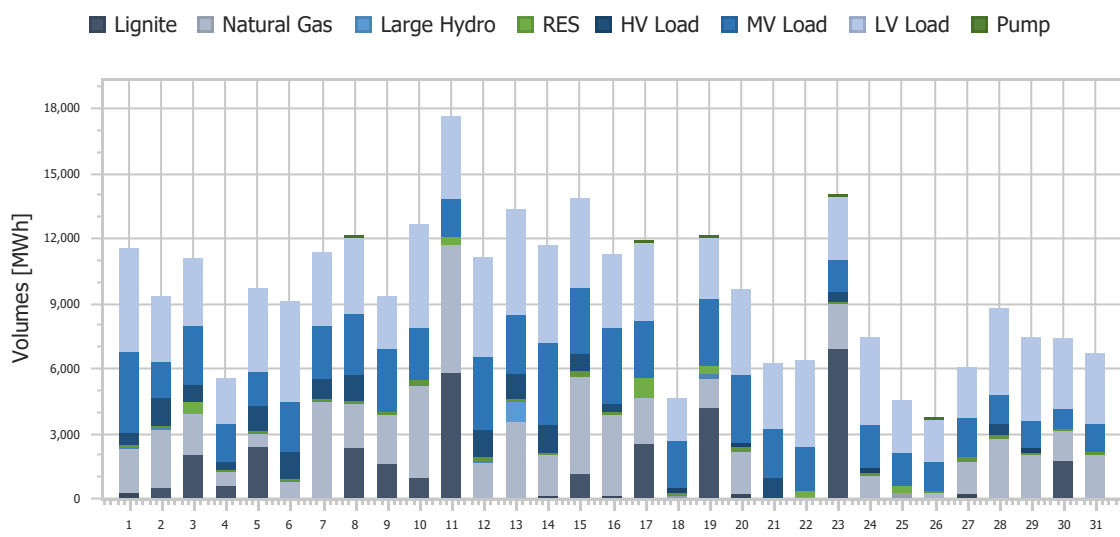
<b>Ref No</b>	Graph 2.3.2
<b>Title</b>	Transactions Volume - SELL Side
<b>Scope</b>	Continuous Intra-Day Trading (XBID) - excl. CBT
<b>Analysis</b>	Daily



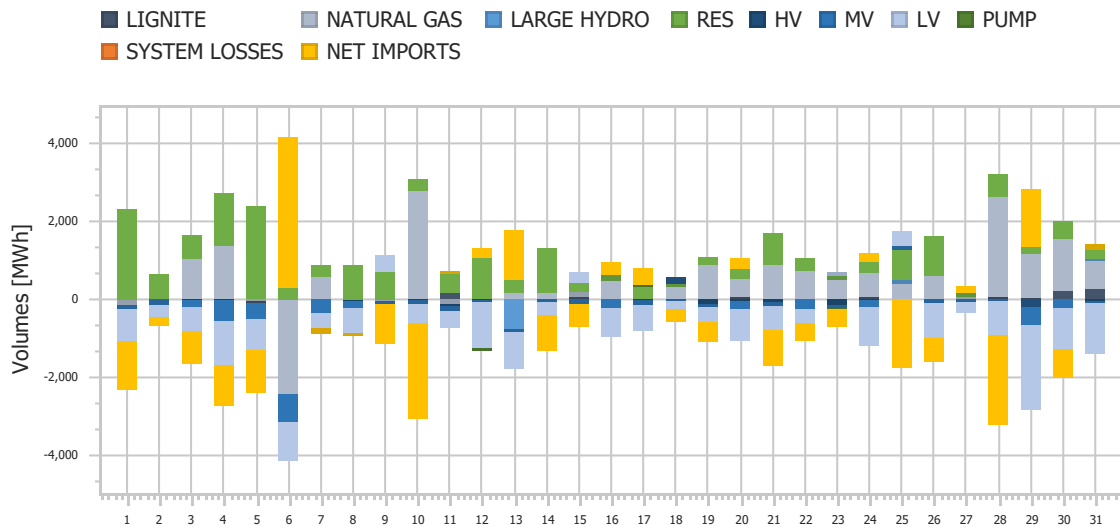
<b>Ref No</b>	Graph 2.3.3
<b>Title</b>	Volume-Weighted Average Price (VWAP) - BUY Side
<b>Scope</b>	Continuous Intra-Day Trading (XBID) - excl. CBT
<b>Analysis</b>	Daily



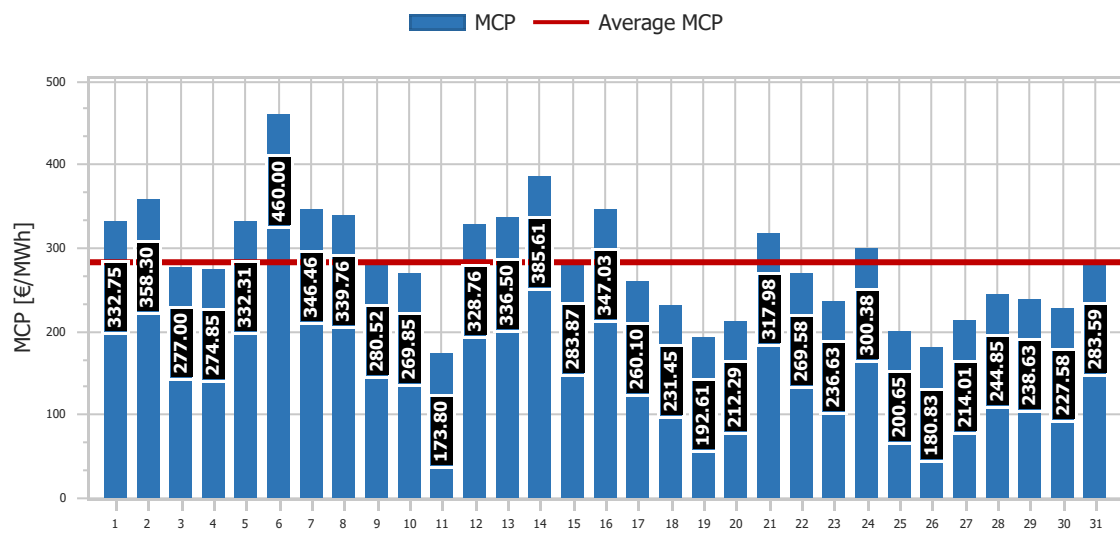
<b>Ref No</b>	Graph 2.3.4
<b>Title</b>	Transactions Volume - BUY Side
<b>Scope</b>	Continuous Intra-Day Trading (XBID) - excl. CBT
<b>Analysis</b>	Daily



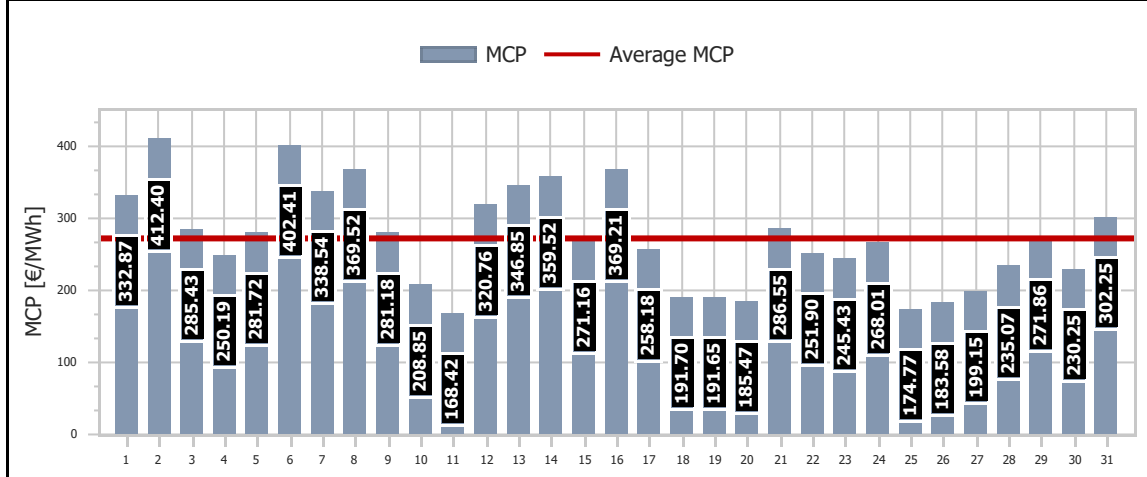
<b>Ref No</b>	Graph 2.4
<b>Title</b>	Energy Mix changes
<b>Scope</b>	Complementary Regional Intraday Auctions
<b>Analysis</b>	Daily



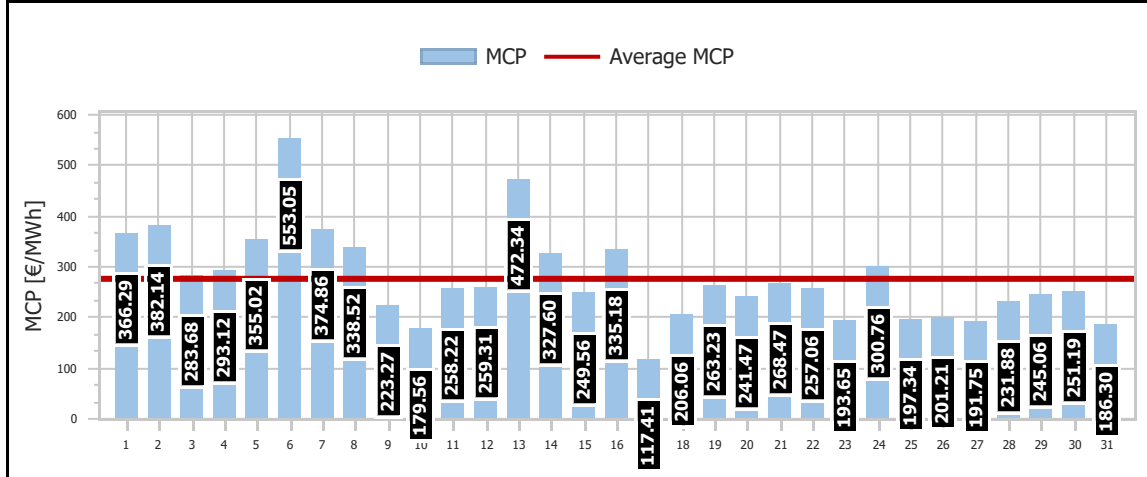
<b>Ref No</b>	Graph 2.5.1
<b>Title</b>	CRIDA1 - Market Clearing Price
<b>Scope</b>	Complementary Regional Intraday Auctions
<b>Analysis</b>	Daily



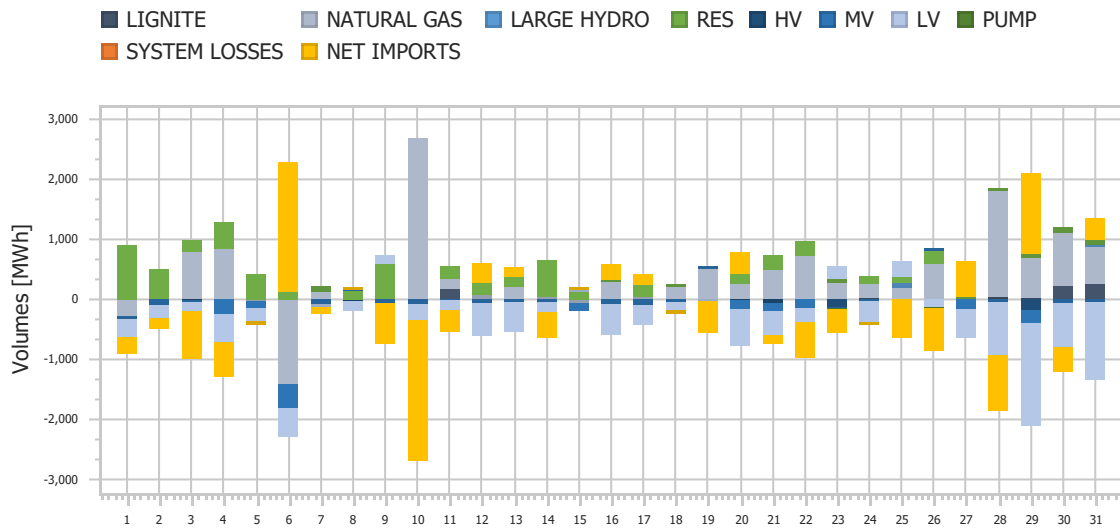
<b>Ref No</b>	Graph 2.5.2
<b>Title</b>	CRIDA2 - Market Clearing Price
<b>Scope</b>	Complementary Regional Intraday Auctions
<b>Analysis</b>	Daily



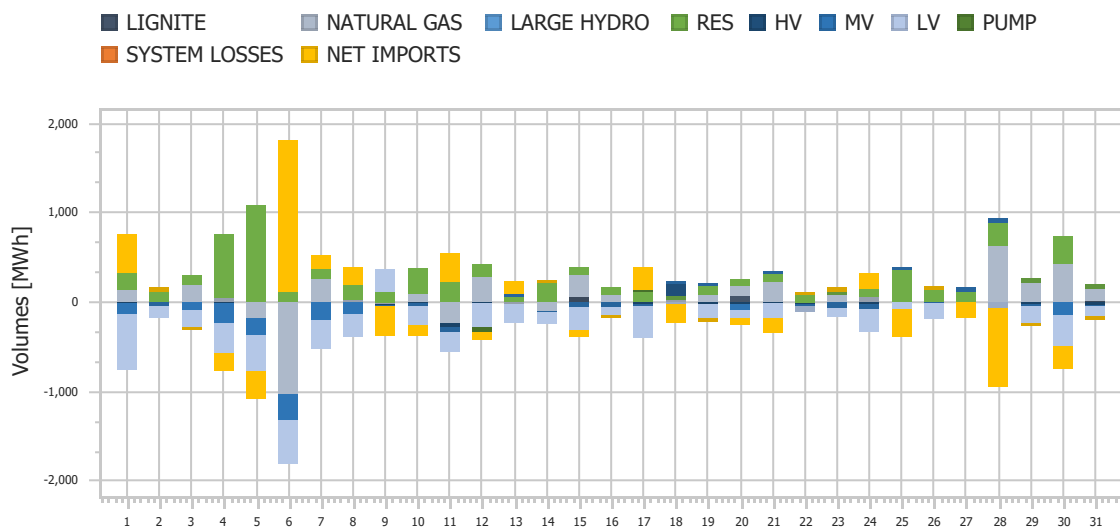
<b>Ref No</b>	Graph 2.5.3
<b>Title</b>	CRIDA3 - Market Clearing Price
<b>Scope</b>	Complementary Regional Intraday Auctions
<b>Analysis</b>	Daily



<b>Ref No</b>	Graph 2.6.1
<b>Title</b>	CRIDA1 - Energy Mix Changes
<b>Scope</b>	Complementary Regional Intraday Auctions
<b>Analysis</b>	Daily

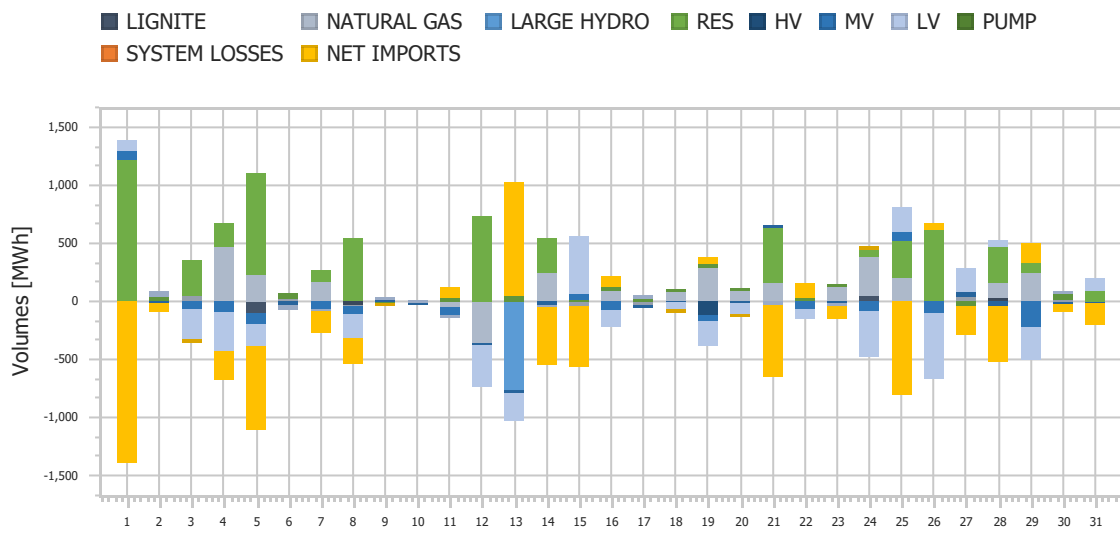


<b>Ref No</b>	Graph 2.6.2
<b>Title</b>	CRIDA2 - Energy Mix Changes
<b>Scope</b>	Complementary Regional Intraday Auctions
<b>Analysis</b>	Daily

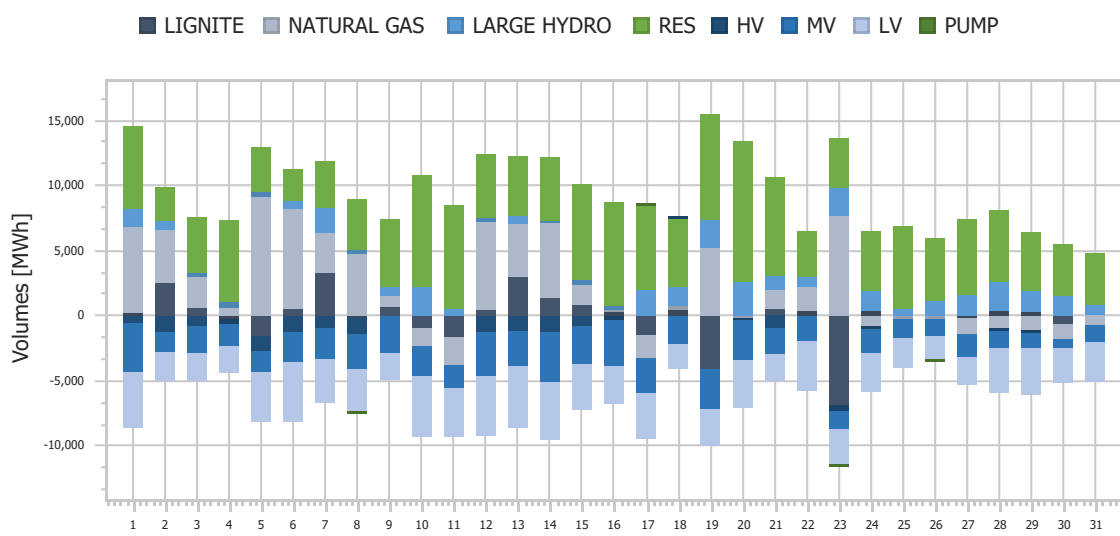




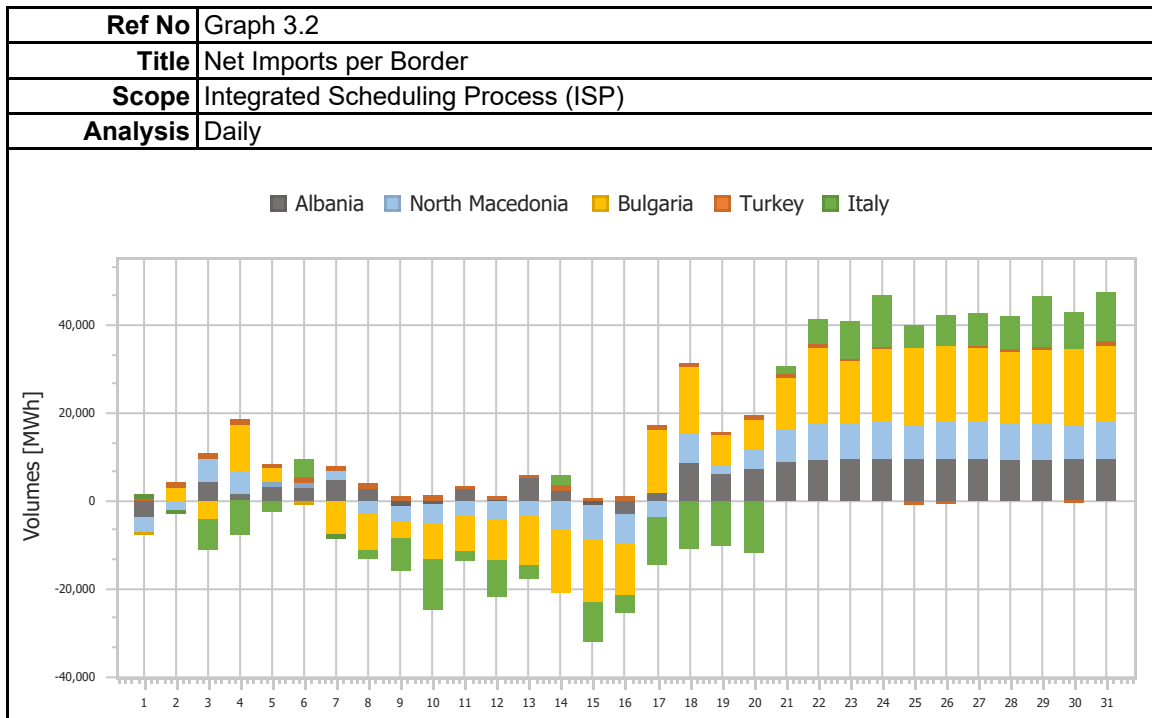
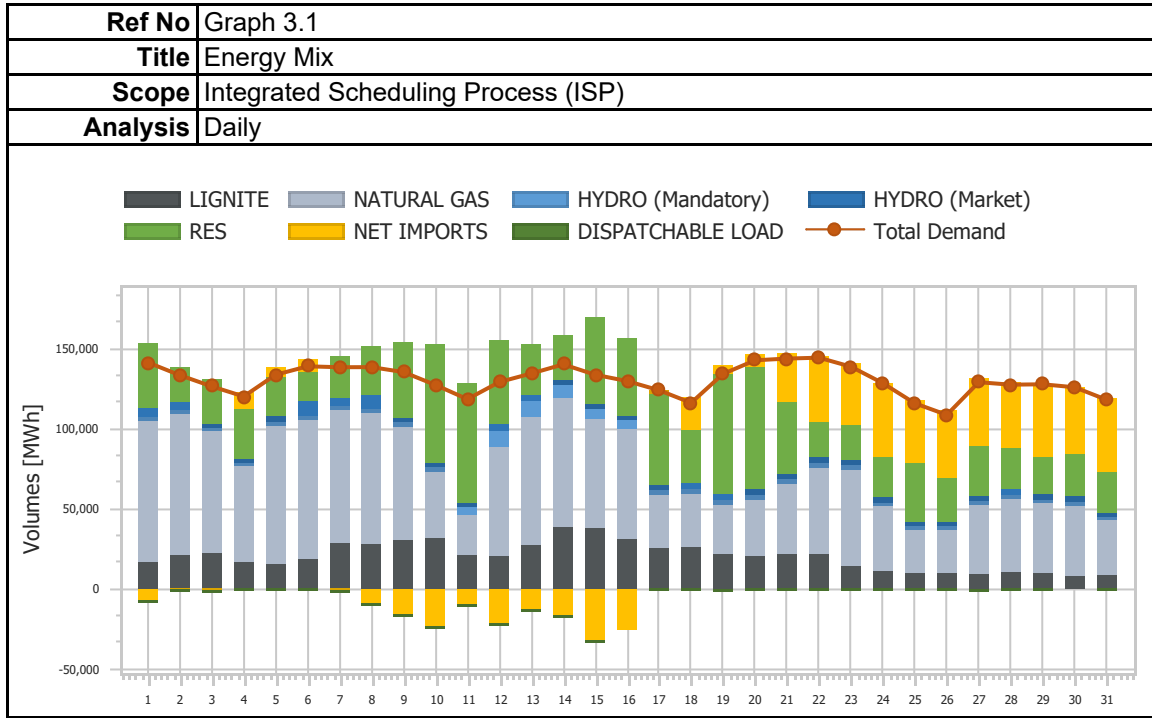
<b>Ref No</b>	Graph 2.6.3
<b>Title</b>	CRIDA3 - Energy Mix Changes
<b>Scope</b>	Complementary Regional Intraday Auctions
<b>Analysis</b>	Daily



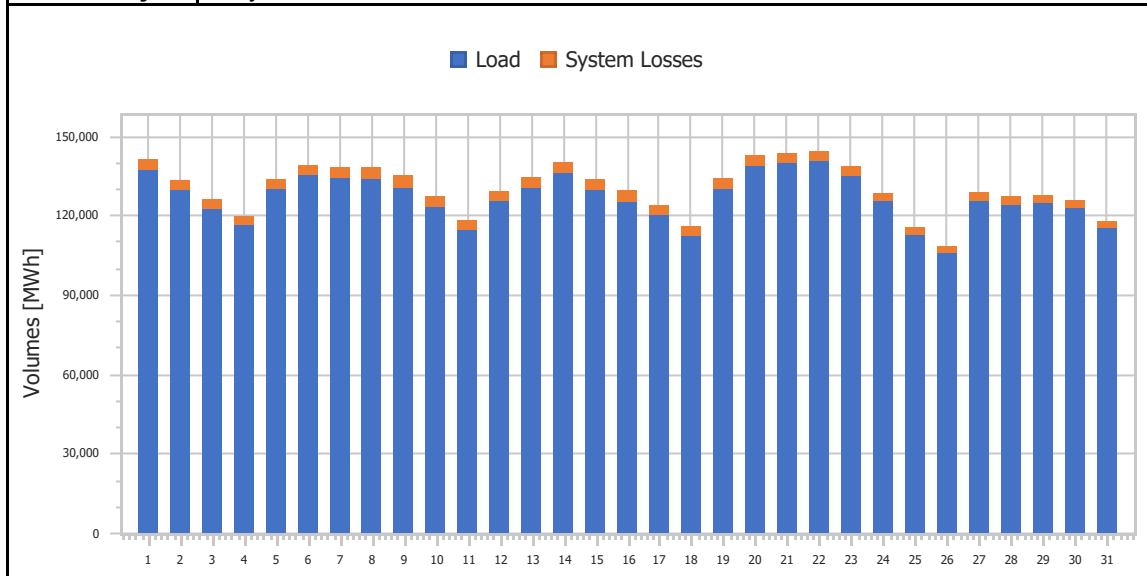
<b>Ref No</b>	Graph 2.7
<b>Title</b>	XBID - Energy Mix Changes
<b>Scope</b>	Continuous Intra-Day Trading (XBID) - excl. CBT
<b>Analysis</b>	Daily



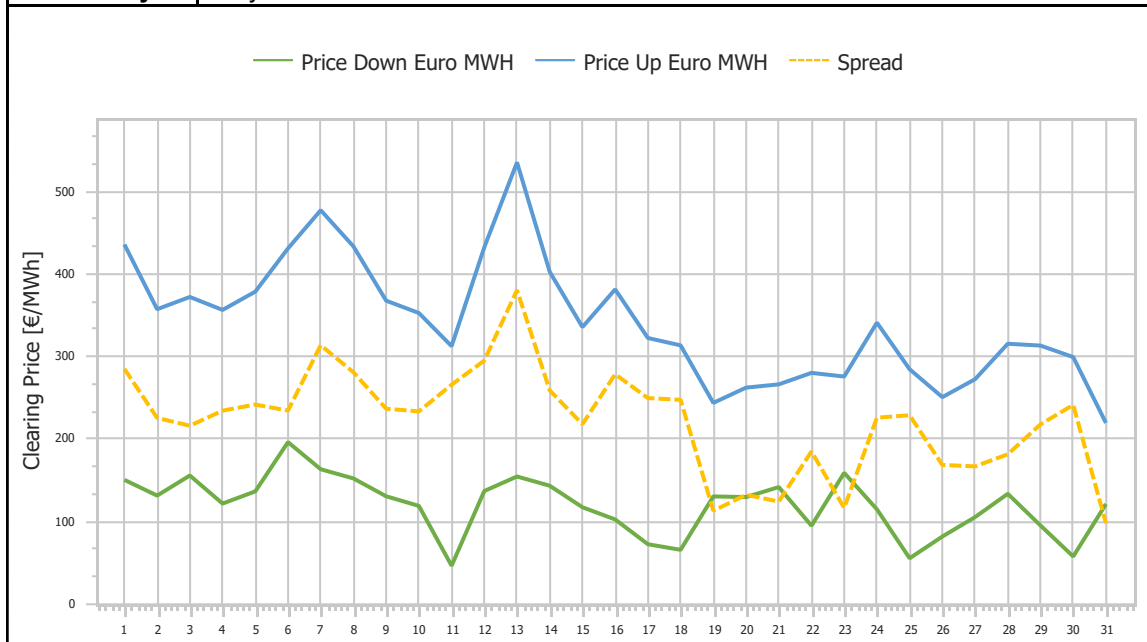
### 3. Integrated Scheduling Process (ISP)



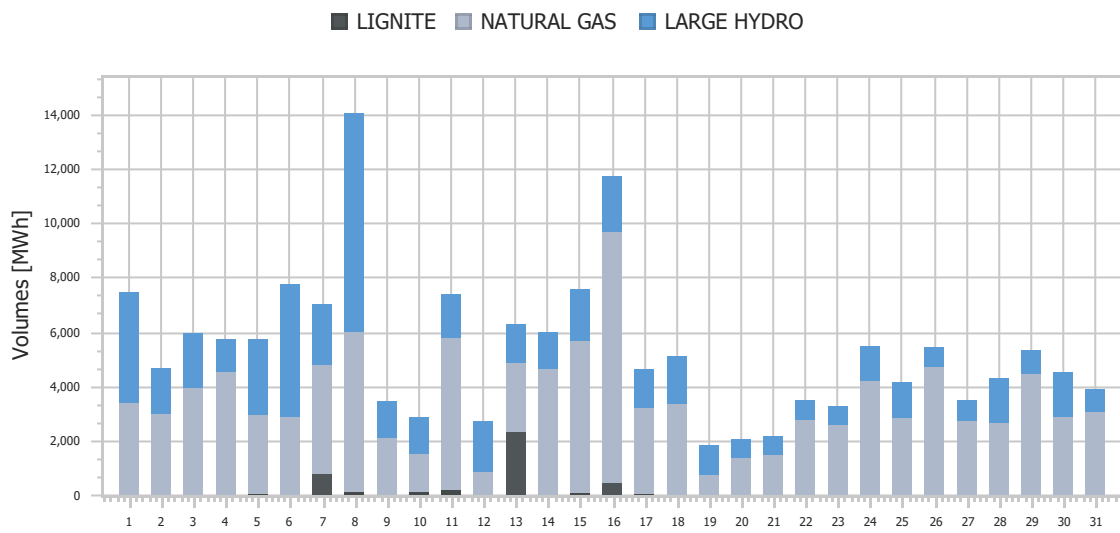
<b>Ref No</b>	Graph 3.3
<b>Title</b>	Demand & System Losses
<b>Scope</b>	Integrated Scheduling Process (ISP)
<b>Analysis</b>	Daily



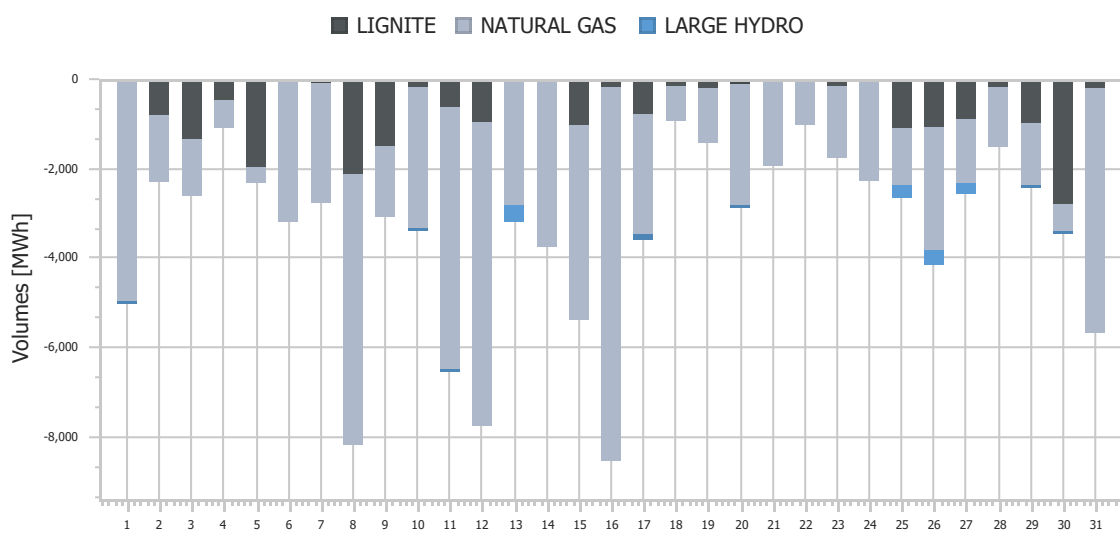
<b>Ref No</b>	Graph 3.4
<b>Title</b>	Clearing Prices
<b>Scope</b>	Integrated Scheduling Process (ISP)
<b>Analysis</b>	Daily



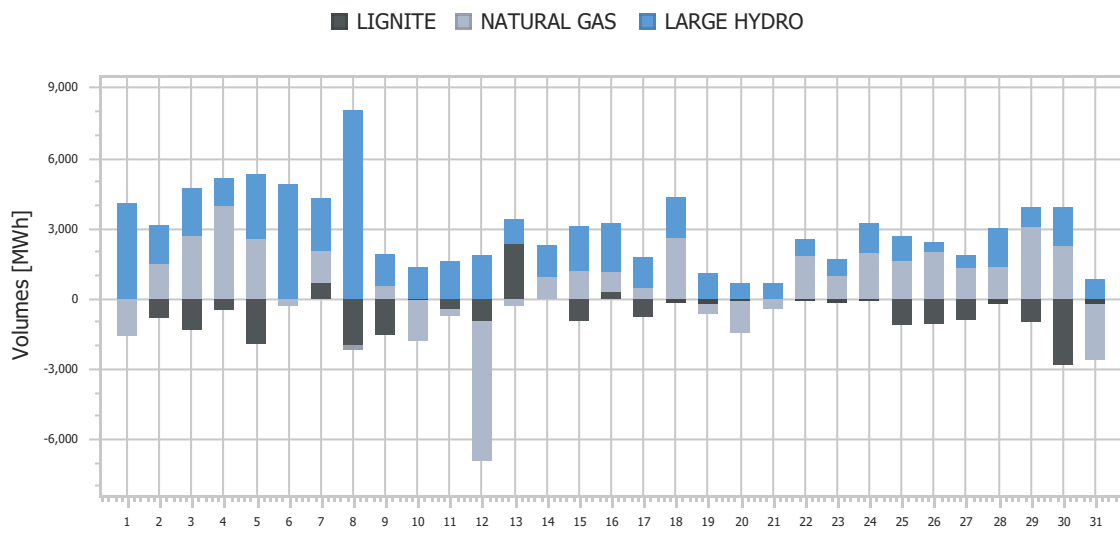
<b>Ref No</b>	Graph 3.5
<b>Title</b>	Upward Activated Balancing energy
<b>Scope</b>	Integrated Scheduling Process (ISP)
<b>Analysis</b>	Daily



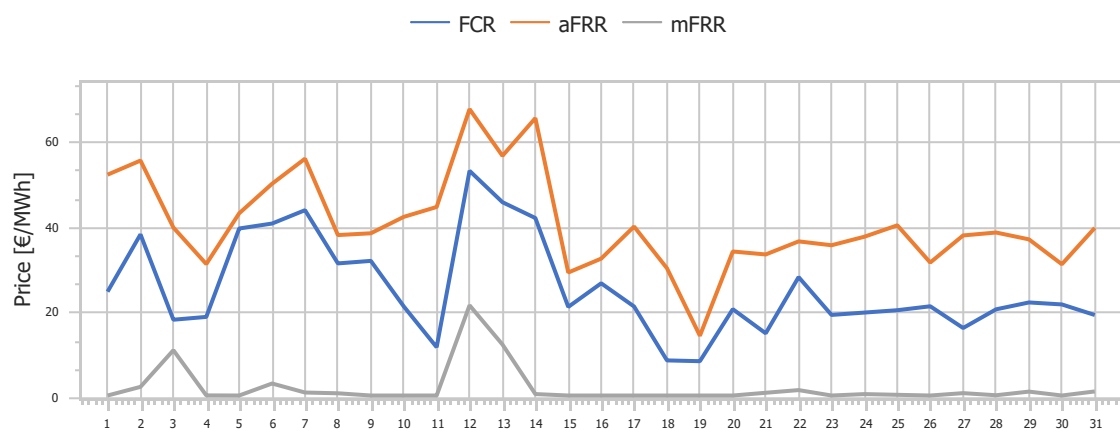
<b>Ref No</b>	Graph 3.6
<b>Title</b>	Downward Activated Balancing energy
<b>Scope</b>	Integrated Scheduling Process (ISP)
<b>Analysis</b>	Daily



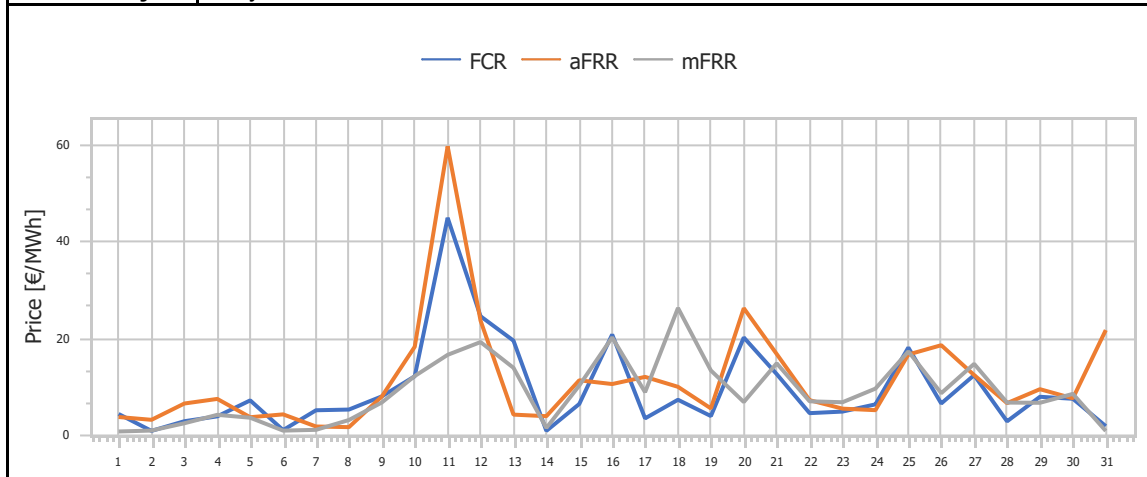
<b>Ref No</b>	Graph 3.7
<b>Title</b>	Net Activated Balancing energy
<b>Scope</b>	Integrated Scheduling Process (ISP)
<b>Analysis</b>	Daily



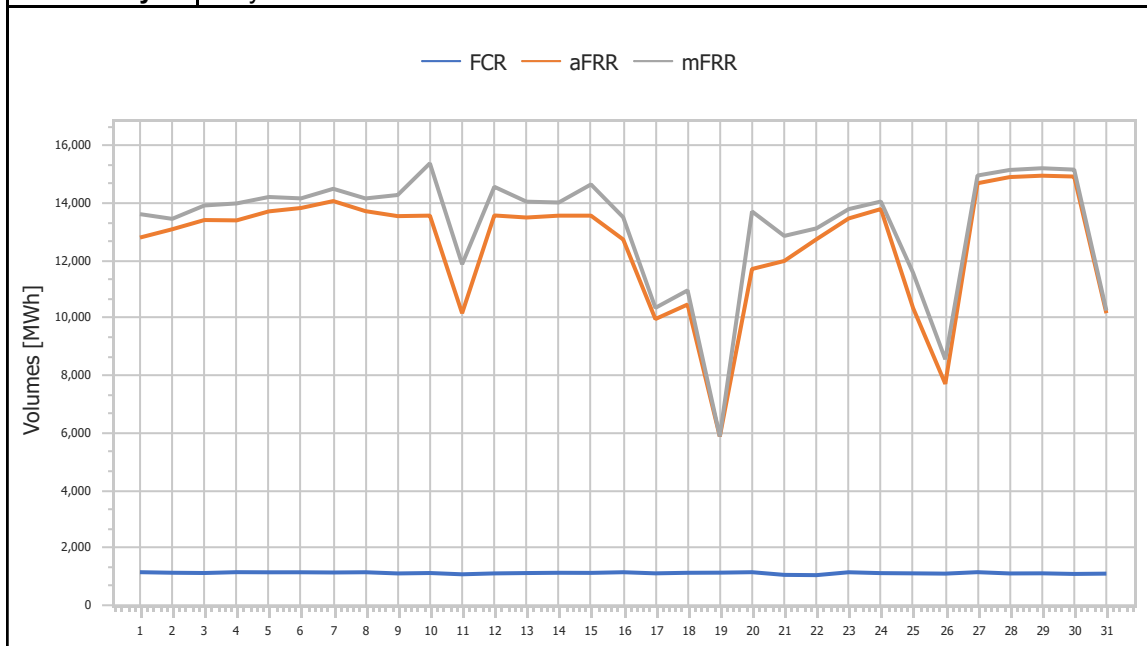
<b>Ref No</b>	Graph 3.8
<b>Title</b>	Upward Capacity Reserves Prices
<b>Scope</b>	Integrated Scheduling Process (ISP)
<b>Analysis</b>	Daily



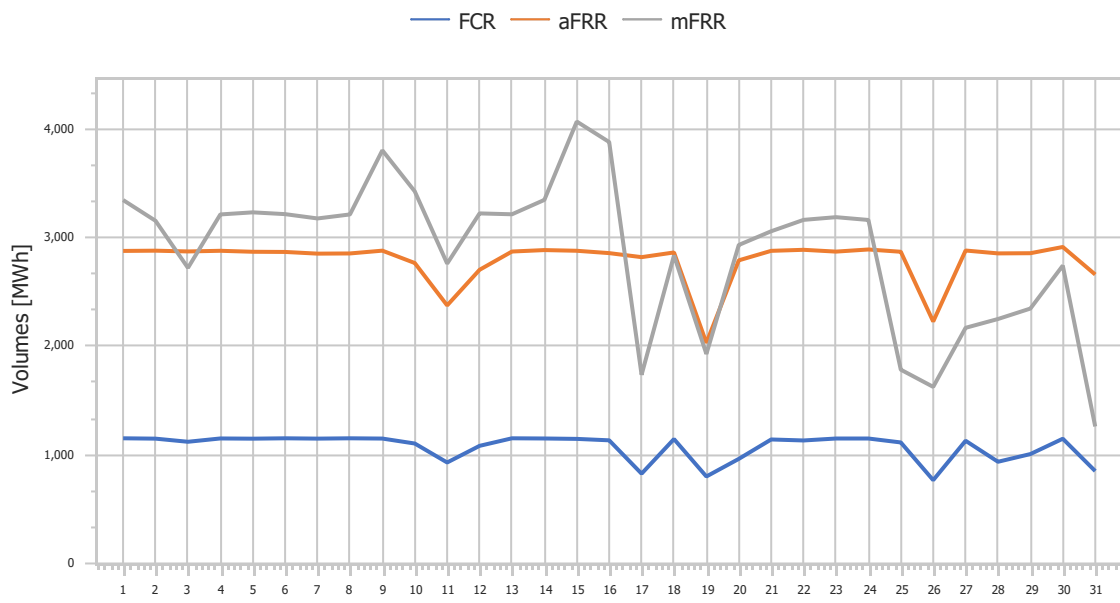
<b>Ref No</b>	Graph 3.9
<b>Title</b>	Downward Capacity Reserves Prices
<b>Scope</b>	Integrated Scheduling Process (ISP)
<b>Analysis</b>	Daily



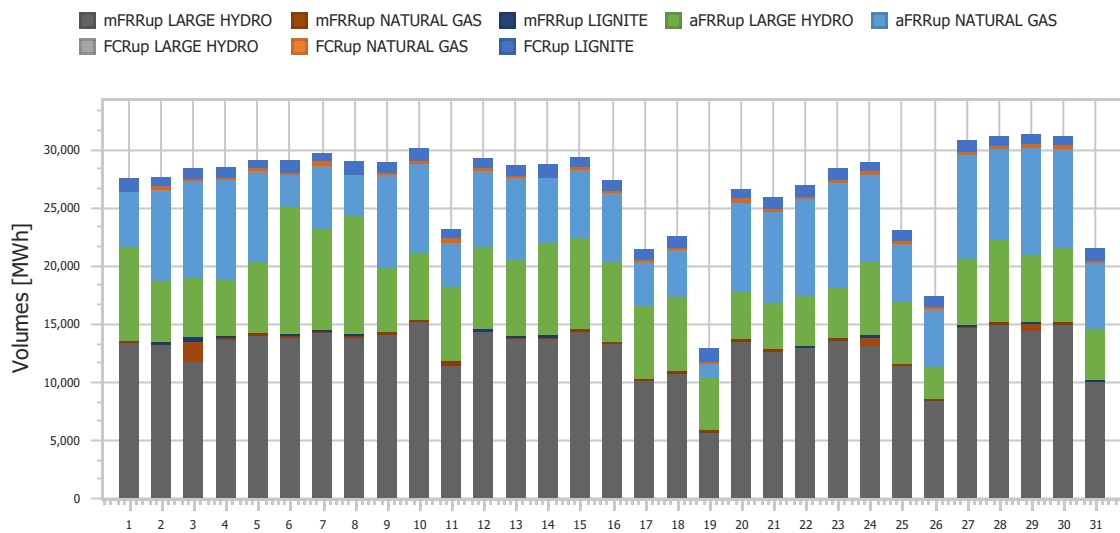
<b>Ref No</b>	Graph 3.10
<b>Title</b>	Upward Capacity Reserves Volumes
<b>Scope</b>	Integrated Scheduling Process (ISP)
<b>Analysis</b>	Daily

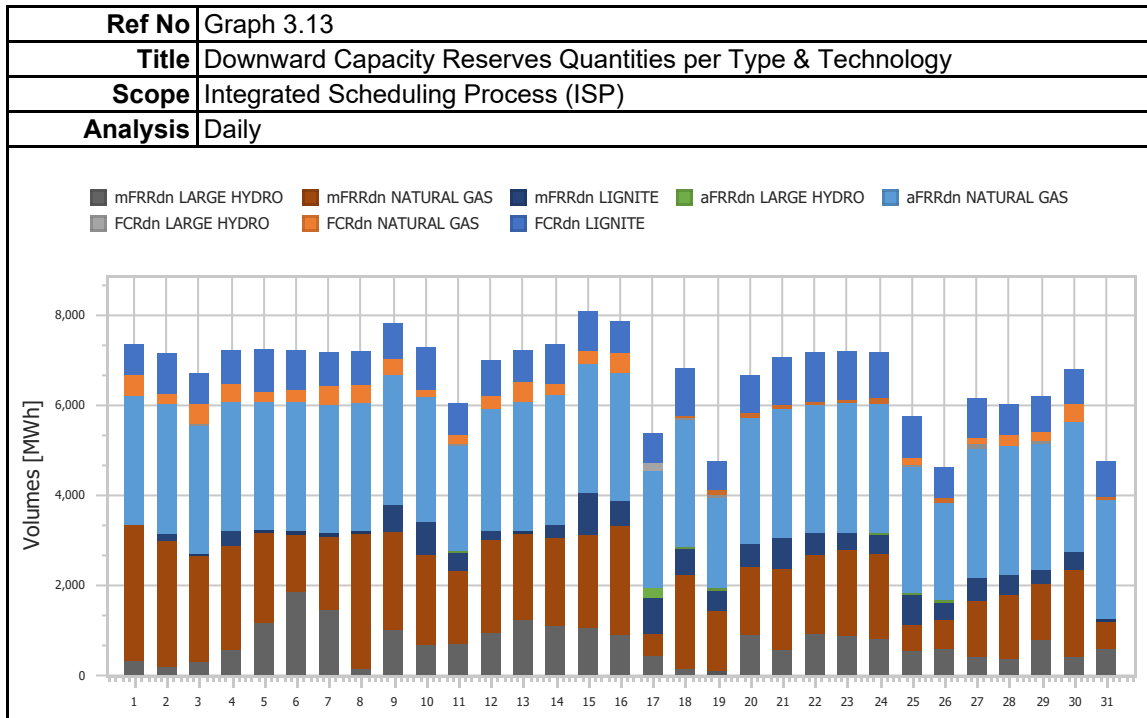


<b>Ref No</b>	Graph 3.11
<b>Title</b>	Downward Capacity Reserves Volumes
<b>Scope</b>	Integrated Scheduling Process (ISP)
<b>Analysis</b>	Daily



<b>Ref No</b>	Graph 3.12
<b>Title</b>	Upward Capacity Reserves Volumes per Technology
<b>Scope</b>	Integrated Scheduling Process (ISP)
<b>Analysis</b>	Daily

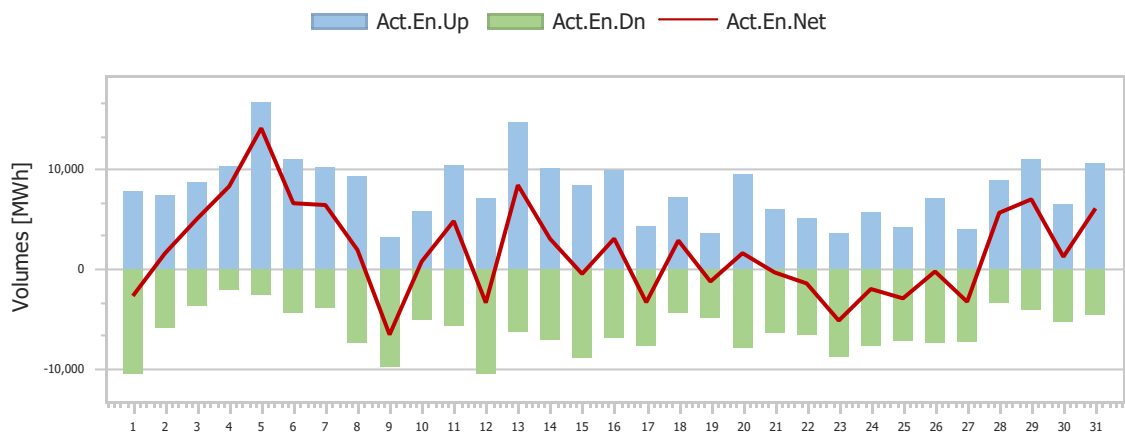




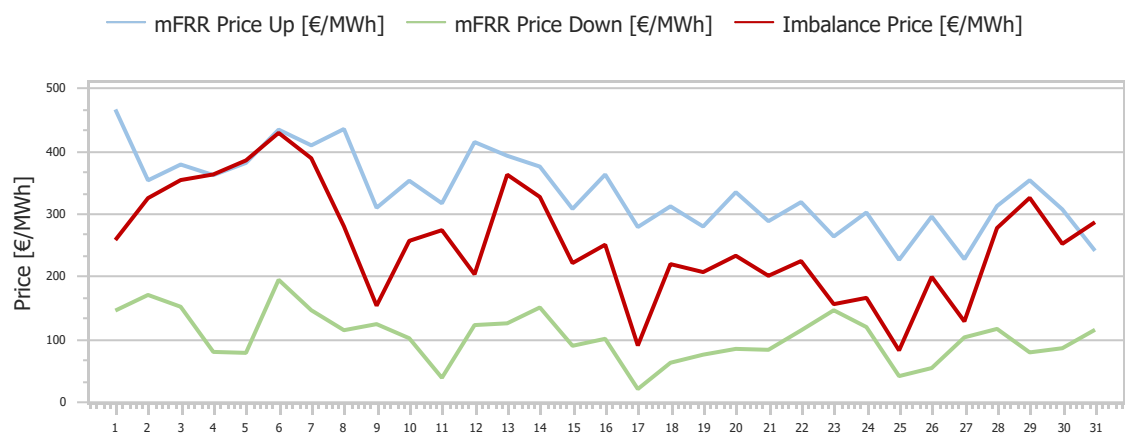


### 4. Imbalance Settlement Procedure

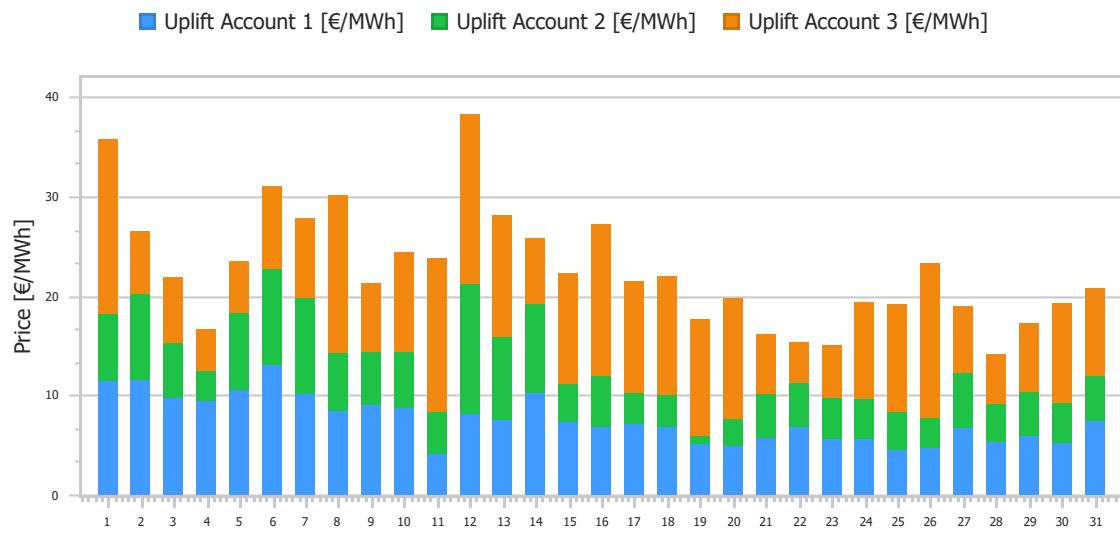
<b>Ref No</b>	Graph 4.1
<b>Title</b>	Activated Balancing Energy
<b>Scope</b>	Imbalance Settlement Procedure
<b>Analysis</b>	Daily



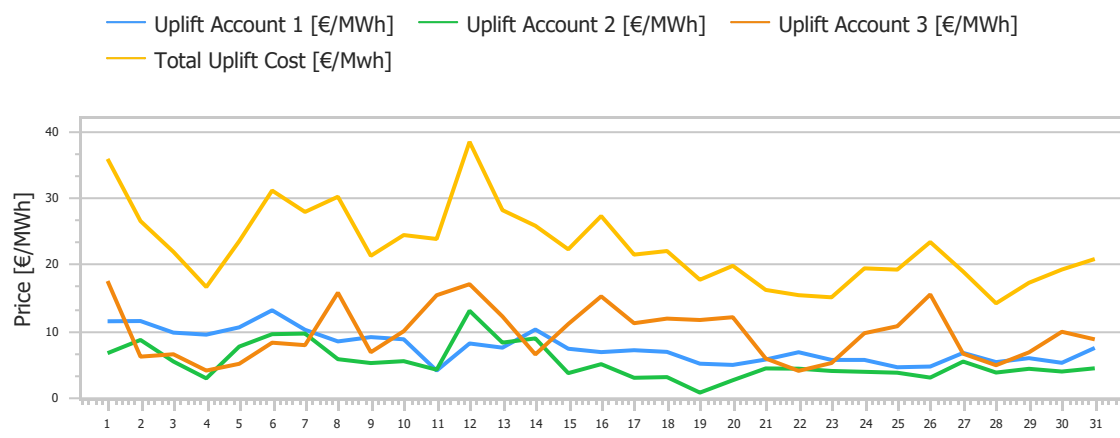
<b>Ref No</b>	Graph 4.2
<b>Title</b>	mFRR & Imbalance Prices
<b>Scope</b>	Imbalance Settlement Procedure
<b>Analysis</b>	Daily



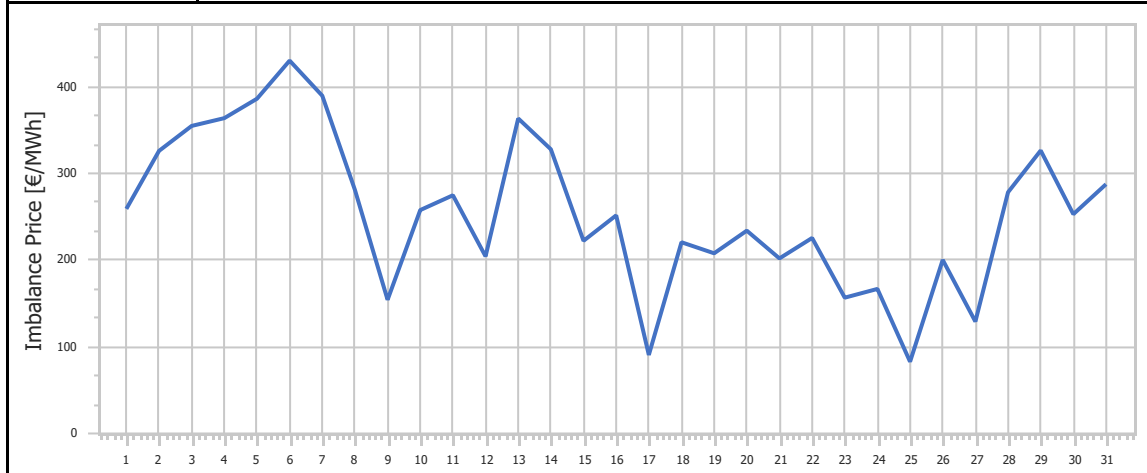
<b>Ref No</b>	Graph 4.3
<b>Title</b>	Uplift Accounts Cost
<b>Scope</b>	Imbalance Settlement Procedure
<b>Analysis</b>	Daily



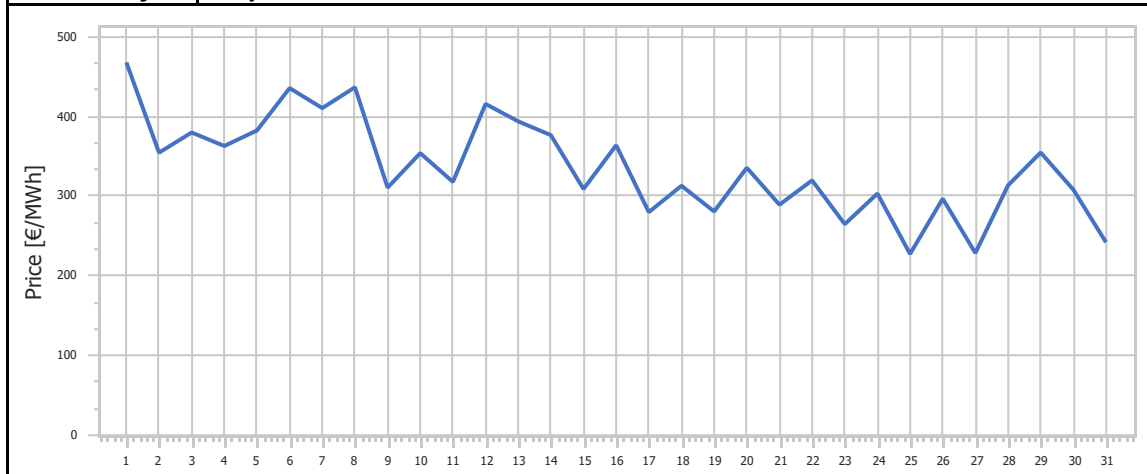
<b>Ref No</b>	Graph 4.4
<b>Title</b>	Uplift Accounts Cost
<b>Scope</b>	Imbalance Settlement Procedure
<b>Analysis</b>	Daily



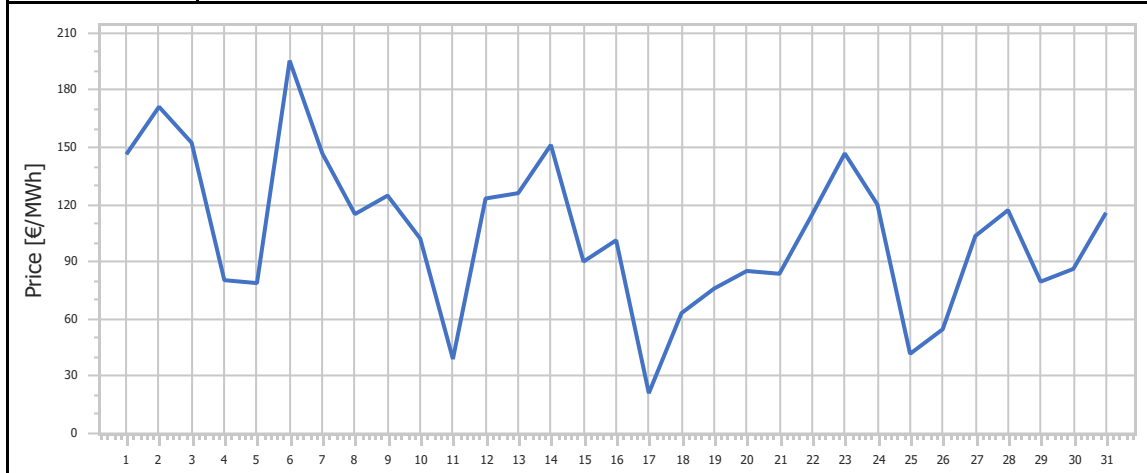
<b>Ref No</b>	Graph 4.5
<b>Title</b>	Imbalance Price
<b>Scope</b>	Imbalance Settlement Procedure
<b>Analysis</b>	Daily



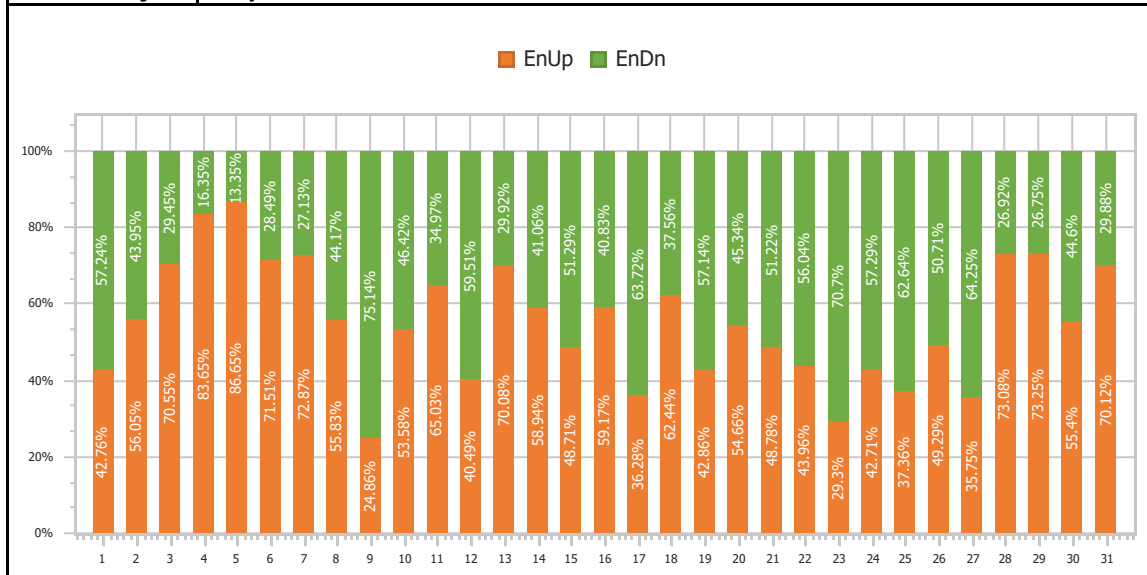
<b>Ref No</b>	Graph 4.6
<b>Title</b>	mFRR Up Price
<b>Scope</b>	Imbalance Settlement Procedure
<b>Analysis</b>	Daily



<b>Ref No</b>	Graph 4.7
<b>Title</b>	mFRR Down Price
<b>Scope</b>	Imbalance Settlement Procedure
<b>Analysis</b>	Daily

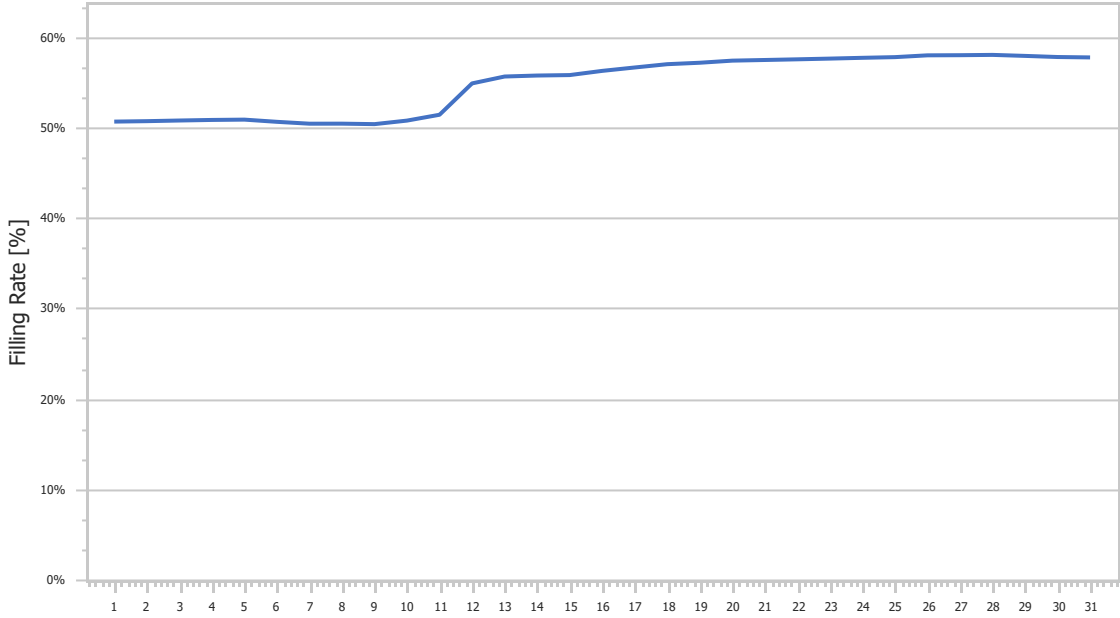


<b>Ref No</b>	Graph 4.8
<b>Title</b>	Balancing Energy Activation Direction
<b>Scope</b>	Imbalance Settlement Procedure
<b>Analysis</b>	Daily

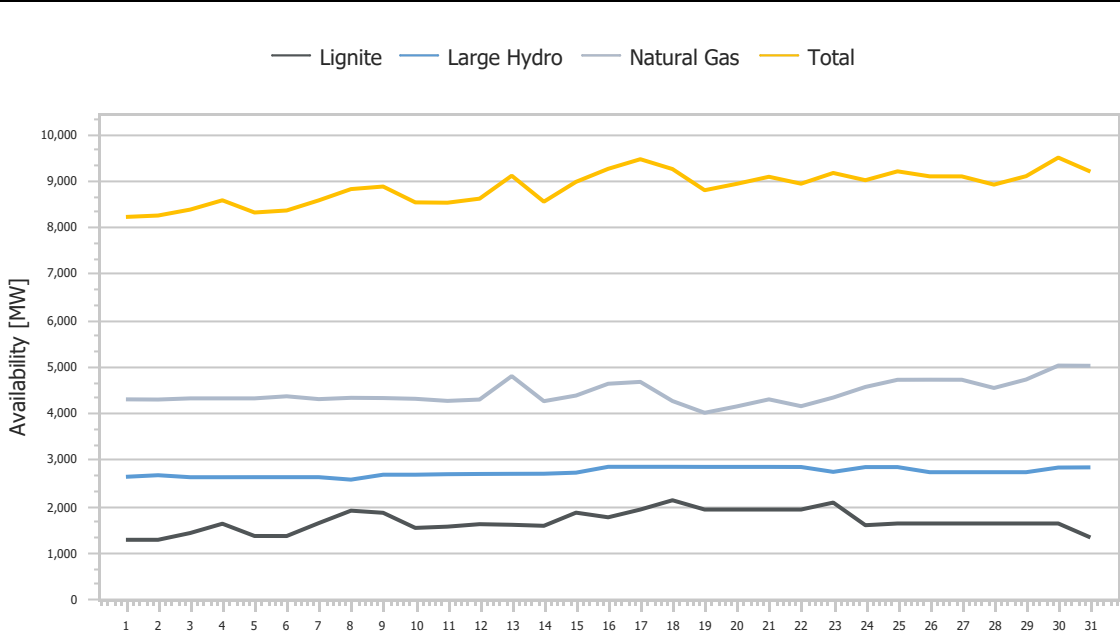


### 5. General Market Data

<b>Ref No</b>	Graph 5.1
<b>Title</b>	Reservoir Filling Rate
<b>Scope</b>	General Market Data
<b>Analysis</b>	Daily



<b>Ref No</b>	Graph 5.2
<b>Title</b>	Availability of Dispatchable Units per Type
<b>Scope</b>	General Market Data
<b>Analysis</b>	Daily



## 1. Statistics

<b>Ref No</b>	Table 1.1
<b>Title</b>	Market Shares per Aggregated Classification - SELL
<b>Scope</b>	Day Ahead Market (DAM)
<b>Analysis</b>	Monthly

Classification	Quantity [MWh]	Share [%]	Value [EUR]	Share [%]
Lignite	656,156.593	14.62%	188,329,437.88€	14.62%
Crete Conventional	149,967.250	3.34%	43,960,142.84€	3.41%
Natural Gas	1,645,054.621	36.65%	507,486,379.71€	39.40%
Large Hydro	141,844.759	3.16%	50,225,380.66€	3.90%
RES	1,012,485.096	22.56%	263,968,261.82€	20.49%
Crete Renewables	43,934.000	0.98%	11,501,853.47€	0.89%
Imports	838,924.521	18.69%	222,646,791.18€	17.28%
<b>Total</b>	<b>4,488,366.840</b>	<b>100.00%</b>	<b>1,288,118,247.57€</b>	<b>100.00%</b>

<b>Ref No</b>	Table 1.2
<b>Title</b>	Statistics per Aggregated Classification - SELL
<b>Scope</b>	Day Ahead Market (DAM)
<b>Analysis</b>	Monthly

	MCP [€/MWh]	Total [MWh]	Lignite [MWh]	CR Conv [MWh]	Natural Gas [MWh]	Hydro [MWh]	RES [MWh]	CR RES [MWh]	Imports [MWh]
<b>Total</b>	-	4,488,366.84	656,156.59	149,967.25	1,645,054.62	141,844.76	1,012,485.10	43,934.00	838,924.52
<b>Average</b>	276.89	144,786.03	21,166.34	4,837.65	53,066.28	4,575.64	32,660.81	1,417.23	27,062.08
<b>Min</b>	157.90	113,132.93	8,560.00	3,340.00	24,569.32	2,453.00	17,675.10	427.00	7,095.87
<b>Min day</b>	11/12/2022	26/12/2022	31/12/2022	20/12/2022	26/12/2022	01/12/2022	06/12/2022	23/12/2022	15/12/2022
<b>Max</b>	400.86	169,660.85	37,492.00	5,856.00	83,509.16	12,611.14	64,927.96	3,751.00	47,682.00
<b>Max day</b>	06/12/2022	15/12/2022	15/12/2022	07/12/2022	01/12/2022	13/12/2022	20/12/2022	20/12/2022	31/12/2022
<b>Spread</b>	242.96	56,527.93	28,932.00	2,516.00	58,939.83	10,158.14	47,252.86	3,324.00	40,586.13
<b>Standard Deviation</b>	59.45	14,807.77	8,016.45	614.94	19,659.74	2,562.47	14,612.36	922.24	14,141.65

<b>Ref No</b>	Table 1.3
<b>Title</b>	Market Shares per Aggregated Classification - BUY
<b>Scope</b>	Day Ahead Market (DAM)
<b>Analysis</b>	Monthly

Classification	Quantity [MWh]	Share [%]	Value [EUR]	Share [%]
System Losses	109,020.000	2.43%	31,005,364.52€	2.41%
Crete Load	213,959.000	4.77%	62,277,737.50€	4.83%
HV Load	608,145.966	13.55%	165,137,374.93€	12.82%
MV Load	795,715.918	17.73%	231,808,984.61€	18.00%
LV Load	2,278,532.780	50.77%	662,676,195.74€	51.45%
PUMP	8,224.520	0.18%	1,108,860.36€	0.09%
Exports	474,768.075	10.58%	134,103,643.04€	10.41%
<b>Total</b>	<b>4,488,366.259</b>	<b>100.00%</b>	<b>1,288,118,160.70€</b>	<b>100.00%</b>

<b>Ref No</b>	Table 1.4
<b>Title</b>	Statistics per Aggregated Classification - BUY
<b>Scope</b>	Day Ahead Market (DAM)
<b>Analysis</b>	Monthly

	MCP [€/MWh]	Total [MWh]	Sys Losses [MWh]	CR Load [MWh]	HV [MWh]	MV [MWh]	LV [MWh]	PUMP [MWh]	Exports [MWh]
<b>Total</b>	-	4,488,366.26	109,020.00	213,959.00	608,145.97	795,715.92	2,278,532.78	8,224.52	474,768.08
<b>Average</b>	276.89	144,786.01	3,516.77	6,901.90	19,617.61	25,668.26	73,501.06	483.80	15,315.10
<b>Min</b>	157.90	113,132.91	2,526.00	5,642.00	18,021.78	16,695.58	63,056.52	32.76	366.00
<b>Min day</b>	11/12/2022	26/12/2022	31/12/2022	18/12/2022	12/12/2022	25/12/2022	26/12/2022	26/12/2022	31/12/2022
<b>Max</b>	400.86	169,660.89	4,622.00	7,878.00	21,675.11	31,300.10	83,611.29	1,100.00	37,986.80
<b>Max day</b>	06/12/2022	15/12/2022	09/12/2022	23/12/2022	31/12/2022	21/12/2022	22/12/2022	13/12/2022	15/12/2022
<b>Spread</b>	242.96	56,527.98	2,096.00	2,236.00	3,653.33	14,604.52	20,554.76	1,067.24	37,620.80
<b>Standard Deviation</b>	59.45	14,807.79	511.12	490.00	1,067.19	4,314.70	4,869.19	255.78	11,343.03

## 2. Market Shares

<b>Ref No</b>	Table 2.1.1			
<b>Title</b>	Market Shares - Upward Capacity Reserves Volumes per Type			
<b>Scope</b>	Balancing Market (BM)			
<b>Analysis</b>	Monthly			
<b>Type</b>	<b>Quantity [MW]</b>	<b>Share [%]</b>	<b>Value [EUR]</b>	<b>Share [%]</b>
aFRR	1,493,009.780	71.67%	17,708,661.27€	89.75%
FCR	130,553.700	6.27%	1,414,709.16€	7.17%
mFRR	459,522.430	22.06%	607,684.07€	3.08%
<b>Total</b>	<b>2,083,085.910</b>	<b>100.00%</b>	<b>19,731,054.50€</b>	<b>100.00%</b>

<b>Ref No</b>	Table 2.1.2			
<b>Title</b>	Market Shares - Downward Capacity Reserves per Type			
<b>Scope</b>	Balancing Market(BM)			
<b>Analysis</b>	Monthly			
<b>Type</b>	<b>Quantity [MW]</b>	<b>Share [%]</b>	<b>Value [EUR]</b>	<b>Share [%]</b>
aFRR	341,266.950	41.90%	1,031,194.08€	39.50%
FCR	129,009.510	15.84%	464,402.90€	17.79%
mFRR	344,274.130	42.27%	1,114,869.92€	42.71%
<b>Total</b>	<b>814,550.590</b>	<b>100.00%</b>	<b>2,610,466.90€</b>	<b>100.00%</b>

<b>Ref No</b>	Table 2.1.3			
<b>Title</b>	Market Shares - Upward Activated Balancing Energy per Type			
<b>Scope</b>	Balancing Market (BM)			
<b>Analysis</b>	Monthly			
<b>Type</b>	<b>Quantity [MWh]</b>	<b>Share [%]</b>	<b>Value [EUR]</b>	<b>Share [%]</b>
aFRR	95,652.980	37.85%	38,645,561.80€	39.16%
mFRR	157,058.020	62.15%	60,050,991.24€	60.84%
<b>Total</b>	<b>252,711.000</b>	<b>100.00%</b>	<b>98,696,553.04€</b>	<b>100.00%</b>

<b>Ref No</b>	Table 2.1.4			
<b>Title</b>	Market Shares - Downward Activated Balancing Energy per Type			
<b>Scope</b>	Balancing Market (BM)			
<b>Analysis</b>	Monthly			
<b>Type</b>	<b>Quantity [MWh]</b>	<b>Share [%]</b>	<b>Value [EUR]</b>	<b>Share [%]</b>
aFRR	51,726.370	25.71%	4,054,961.23€	20.98%
mFRR	149,445.960	74.29%	15,277,260.78€	79.02%
<b>Total</b>	<b>201,172.320</b>	<b>100.00%</b>	<b>19,332,222.01€</b>	<b>100.00%</b>

### 3. Market Overview

<b>Ref No</b>	Table 3.1
<b>Title</b>	Total Transactions Quantity per Market
<b>Scope</b>	DAM, IDM, Balancing Energy Market - SELL Side
<b>Analysis</b>	Monthly

Market	Quantity [MWh]	Share [%]
DAM	4,488,366.84	89.99%
CRIDA1	32,235.99	0.65%
CRIDA2	18,676.62	0.37%
CRIDA3	16,215.75	0.33%
XBID*	380,496.60	7.63%
IDM (Total)	447,624.96	8.97%
Balancing Energy (Up)	252,711.00	5.07%
Balancing Energy (Dn)	201,172.32	4.03%
Balancing Energy (Total)	51,538.68	1.03%
<b>Total</b>	<b>4,987,530.48</b>	<b>100.00%</b>

\* Excluding CBT

<b>Ref No</b>	Table 3.2
<b>Title</b>	Total Transactions Value per Market
<b>Scope</b>	DAM, IDM, Balancing Energy Market - SELL Side
<b>Analysis</b>	Monthly

Market	Value [EUR]	Share [%]
DAM	1,288,118,247.57€	85.02%
CRIDA1	8,930,893.93€	0.59%
CRIDA2	5,118,434.19€	0.34%
CRIDA3	5,017,563.65€	0.33%
XBID*	106,109,484.93€	7.00%
IDM (Total)	125,176,376.70€	8.26%
Balancing Capacity (Up)	19,731,054.50€	1.30%
Balancing Capacity (Dn)	2,610,466.90€	0.17%
Balancing Capacity (Total)	22,341,521.40€	1.47%
Balancing Energy (Up)	98,696,553.04€	6.51%
Balancing Energy (Dn)	19,332,222.01€	1.28%
Balancing Energy (Total)	79,364,331.03€	5.24%
Balancing Market (Total)	101,705,852.43€	6.71%
<b>Total</b>	<b>1,515,000,476.70€</b>	<b>100.00%</b>

\* Excluding CBT